

Data File : VV013504.D
 Acq On : 06 Nov 2019 17:34
 Operator : SY/MD
 Sample : MDL07
 Misc : 5.0G/5mL/100uL/5.0mL/MSVOA_V/MEOH
 ALS Vial : 17 Sample Multiplier: 1

Instrument :
 MSVOA_V
 ClientSampleId :
 MDL07

Quant Time: Nov 07 02:48:50 2019
 Quant Method : Z:\VOASRV\HPCHEM1\MSVOA_V\METHOD\SOMVLM110619WMA.M
 Quant Title : VOC Analysis
 QLast Update : Thu Nov 07 01:53:11 2019
 Response via : Initial Calibration

Internal Standards	R.T.	QIon	Response	Conc	Units	Dev(Min)
1) 1,4-Difluorobenzene	5.66	114	860501	50.00	ug/L	0.00
28) Chlorobenzene-d5	8.89	117	829487	50.00	ug/L	0.00
60) 1,4-Dichlorobenzene-d4	11.29	152	385986	50.00	ug/L	0.00

System Monitoring Compounds

4) Vinyl Chloride-d3	1.32	65	242993	48.22	ug/L	0.00
Spiked Amount	50.000	Range	60 - 135	Recovery	=	96.44%
7) Chloroethane-d5	1.58	69	206183	50.27	ug/L	0.00
Spiked Amount	50.000	Range	70 - 130	Recovery	=	100.54%
11) 1,1-Dichloroethene-d2	2.13	63	337881	38.34	ug/L	0.00
Spiked Amount	50.000	Range	60 - 125	Recovery	=	76.68%
21) 2-Butanone-d5	3.92	46	428056	114.89	ug/L	0.00
Spiked Amount	100.000	Range	40 - 130	Recovery	=	114.89%
24) Chloroform-d	4.40	84	536770	49.07	ug/L	0.00
Spiked Amount	50.000	Range	70 - 125	Recovery	=	98.14%
26) 1,2-Dichloroethane-d4	5.08	65	367377	51.46	ug/L	0.00
Spiked Amount	50.000	Range	70 - 125	Recovery	=	102.92%
32) Benzene-d6	5.10	84	1126558	50.92	ug/L	0.00
Spiked Amount	50.000	Range	70 - 125	Recovery	=	101.84%
36) 1,2-Dichloropropane-d6	6.11	67	366698	51.10	ug/L	0.00
Spiked Amount	50.000	Range	70 - 120	Recovery	=	102.20%
41) Toluene-d8	7.36	98	1018953	50.06	ug/L	0.00
Spiked Amount	50.000	Range	80 - 120	Recovery	=	100.12%
43) trans-1,3-Dichloropropene-	7.66	79	161925	49.10	ug/L	0.00
Spiked Amount	50.000	Range	60 - 125	Recovery	=	98.20%
47) 2-Hexanone-d5	8.13	63	261388	100.40	ug/L	0.00
Spiked Amount	100.000	Range	45 - 130	Recovery	=	100.40%
57) 1,1,2,2-Tetrachloroethane-	10.26	84	442751	49.10	ug/L	0.00
Spiked Amount	50.000	Range	65 - 120	Recovery	=	98.20%
64) 1,2-Dichlorobenzene-d4	11.67	152	416121	54.08	ug/L	0.00
Spiked Amount	50.000	Range	80 - 120	Recovery	=	108.16%

Target Compounds

Target Compounds	R.T.	QIon	Response	Conc	Units	Qvalue
2) Dichlorodifluoromethane	1.14	85	16783	2.343	ug/L	98
3) Chloromethane	1.25	50	14499	2.131	ug/L	98
5) Vinyl chloride	1.32	62	15945	2.508	ug/L #	61
6) Bromomethane	1.53	94	7569	2.482	ug/L	97
8) Chloroethane	1.60	64	8954	2.514	ug/L	95
9) Trichlorofluoromethane	1.77	101	20393	2.417	ug/L	98
10) 1,1,2-Trichloro-1,2,2-trif	2.14	101	14559	3.064	ug/L #	84
13) Acetone	2.19	43	14695	4.226	ug/L	91
14) Carbon disulfide	2.32	76	38228	2.408	ug/L	98
15) Methyl Acetate	2.46	43	14287	2.252	ug/L	94
16) Methylene chloride	2.53	84	16095	2.622	ug/L	94
17) trans-1,2-Dichloroethene	2.80	96	13327	2.359	ug/L	91
18) Methyl tert-butyl Ether	2.80	73	38096	2.212	ug/L	97
19) 1,1-Dichloroethane	3.23	63	25285	2.348	ug/L	99
23) Bromochloromethane	4.30	128	4749	1.457	ug/L	87
25) Chloroform	4.42	83	49669	4.482	ug/L	93
27) 1,2-Dichloroethane	5.18	62	19246	2.266	ug/L	99

Data File : VV013504.D
 Acq On : 06 Nov 2019 17:34
 Operator : SY/MD
 Sample : MDL07
 Misc : 5.0G/5mL/100uL/5.0mL/MSVOA_V/MEOH
 ALS Vial : 17 Sample Multiplier: 1

Instrument :
 MSVOA_V
 ClientSampleId :
 MDL07

Quant Time: Nov 07 02:48:50 2019
 Quant Method : Z:\VOASRV\HPCHEM1\MSVOA_V\METHOD\SOMVLM110619WMA.M
 Quant Title : VOC Analysis
 QLast Update : Thu Nov 07 01:53:11 2019
 Response via : Initial Calibration

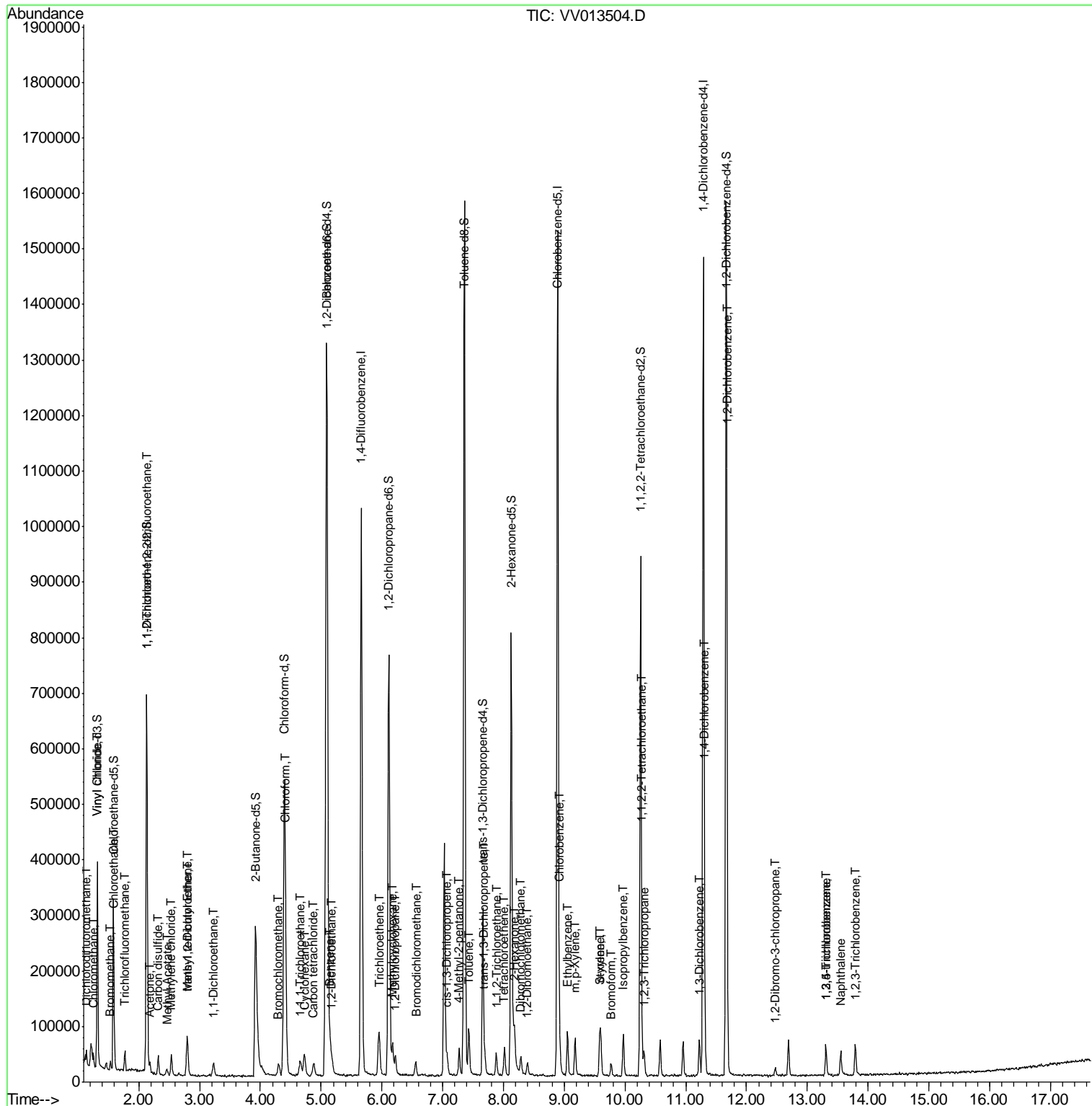
Internal Standards	R.T.	QIon	Response	Conc	Units	Dev(Min)
29) Cyclohexane	4.72	56	21514	2.258	ug/L	96
30) 1,1,1-Trichloroethane	4.66	97	21485	2.327	ug/L	99
31) Carbon tetrachloride	4.87	117	17962	2.182	ug/L	97
33) Benzene	5.15	78	55135	2.341	ug/L	100
34) Trichloroethene	5.96	95	15226	2.433	ug/L	96
35) Methylcyclohexane	6.18	83	20825	2.158	ug/L	98
37) 1,2-Dichloropropane	6.22	63	13355	2.154	ug/L #	90
38) Bromodichloromethane	6.56	83	18609	2.282	ug/L #	94
39) cis-1,3-Dichloropropene	7.07	75	20647	2.192	ug/L	96
40) 4-Methyl-2-pentanone	7.27	43	33939	4.247	ug/L	99
42) Toluene	7.43	91	57787	2.354	ug/L	99
44) trans-1,3-Dichloropropene	7.69	75	18881	2.304	ug/L	93
45) 1,1,2-Trichloroethane	7.88	97	12814	2.207	ug/L	92
46) Tetrachloroethene	8.02	164	13089	2.450	ug/L	92
48) 2-Hexanone	8.18	43	47503	7.527	ug/L	94
49) Dibromochloromethane	8.29	129	14999	2.247	ug/L	92
50) 1,2-Dibromoethane	8.40	107	13971	2.294	ug/L	97
51) Chlorobenzene	8.92	112	38518	2.361	ug/L	90
52) Ethylbenzene	9.05	91	56119	2.107	ug/L	99
53) m,p-Xylene	9.18	106	19507	1.930	ug/L	95
54) o-xylene	9.59	106	18072	1.864	ug/L	98
55) Styrene	9.60	104	30863	1.842	ug/L	91
56) Isopropylbenzene	9.97	105	46510	1.827	ug/L	98
58) 1,1,2,2-Tetrachloroethane	10.28	83	22475	2.564	ug/L #	94
59) 1,2,3-Trichloropropane	10.32	75	15997	2.192	ug/L	93
61) Bromoform	9.77	173	10426	2.304	ug/L #	92
62) 1,3-Dichlorobenzene	11.23	146	27720	2.370	ug/L	98
63) 1,4-Dichlorobenzene	11.32	146	29783	2.458	ug/L	95
65) 1,2-Dichlorobenzene	11.68	146	29219	2.494	ug/L	97
66) 1,2-Dibromo-3-chloropropan	12.47	75	3669	2.270	ug/L	91
67) 1,3,5-Trichlorobenzene	13.31	180	17771	1.944	ug/L	97
68) 1,2,4-trichlorobenzene	13.31	180	17771	2.219	ug/L	98
69) Naphthalene	13.55	128	38810	1.814	ug/L	97
70) 1,2,3-Trichlorobenzene	13.79	180	18320	2.154	ug/L	97

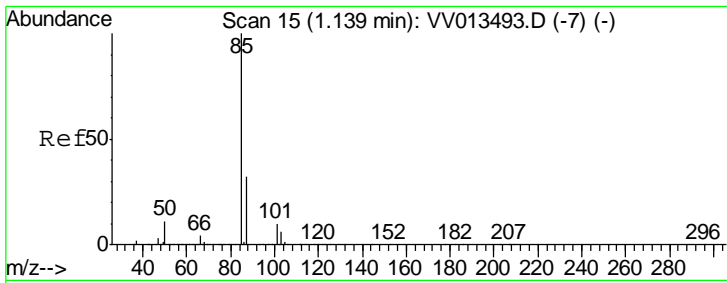
(#) = qualifier out of range (m) = manual integration (+) = signals summed

Data File : VV013504.D
Acq On : 06 Nov 2019 17:34
Operator : SY/MD
Sample : MDL07
Misc : 5.0G/5mL/100uL/5.0mL/MSVOA_V/MEOH
ALS Vial : 17 Sample Multiplier: 1

Instrument :
MSVOA_V
Client Sampled :
MDL07

Quant Time: Nov 07 02:48:50 2019
Quant Method : Z:\VOASRV\HPCHEM1\MSVOA_V\METHOD\SOMVLM110619WMA.M
Quant Title : VOC Analysis
QLast Update : Thu Nov 07 01:53:11 2019
Response via : Initial Calibration

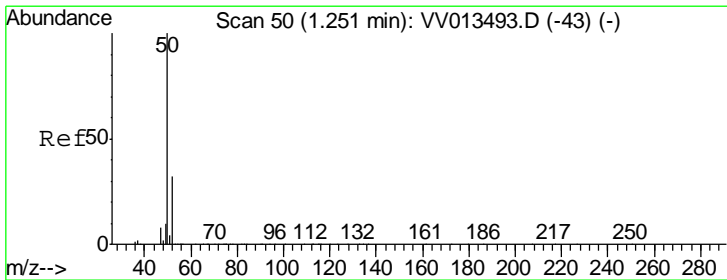
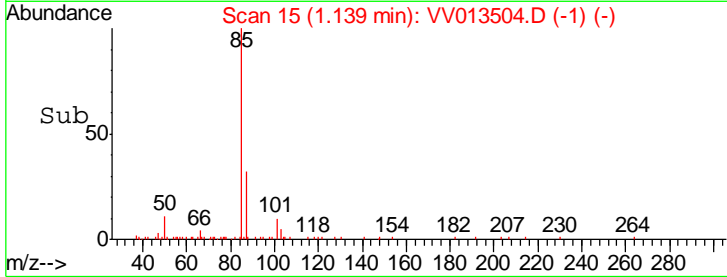
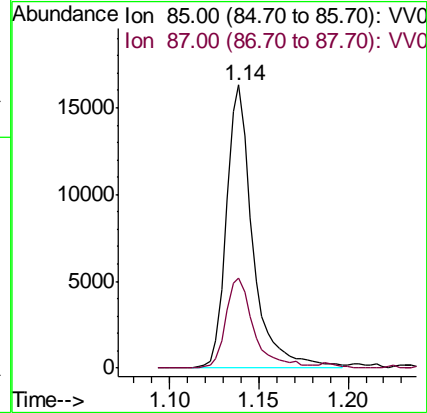
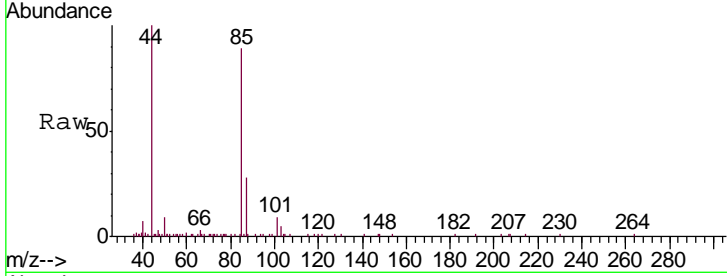




#2
 Dichlorodifluoromethane
 Concen: 2.343 ug/L
 RT: 1.14 min Scan# 15
 Delta R.T. 0.00 min
 Lab File: VV013504.D
 Acq: 06 Nov 2019 17:34

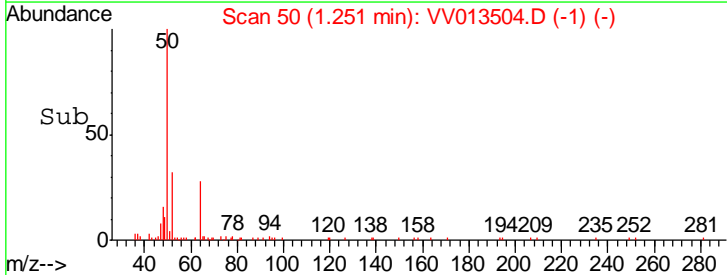
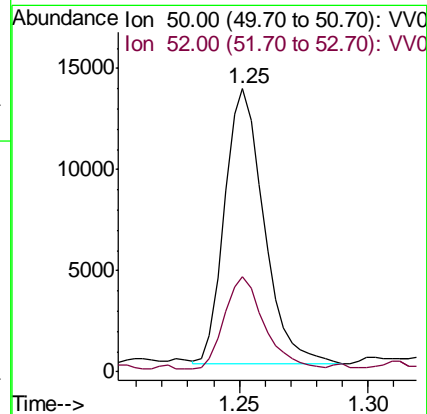
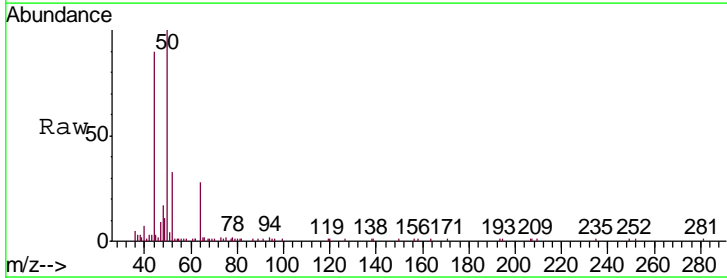
Instrument :
 MSVOA_V
 ClientSampled :
 MDL07

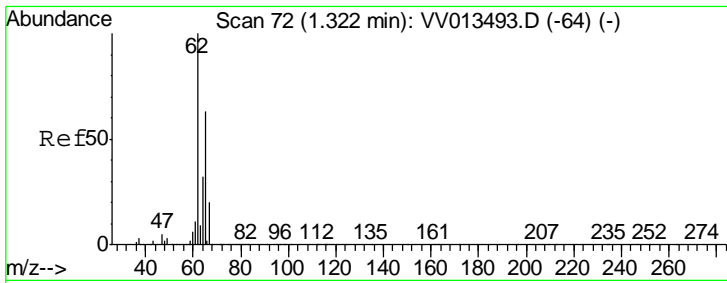
Tgt Ion: 85 Resp: 16783
 Ion Ratio Lower Upper
 85 100
 87 32.8 25.4 38.0



#3
 Chloromethane
 Concen: 2.131 ug/L
 RT: 1.25 min Scan# 50
 Delta R.T. 0.00 min
 Lab File: VV013504.D
 Acq: 06 Nov 2019 17:34

Tgt Ion: 50 Resp: 14499
 Ion Ratio Lower Upper
 50 100
 52 33.4 22.5 41.9

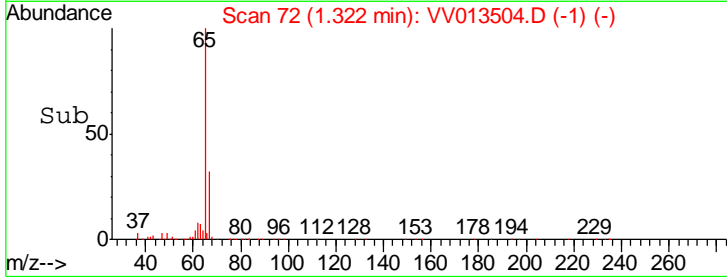
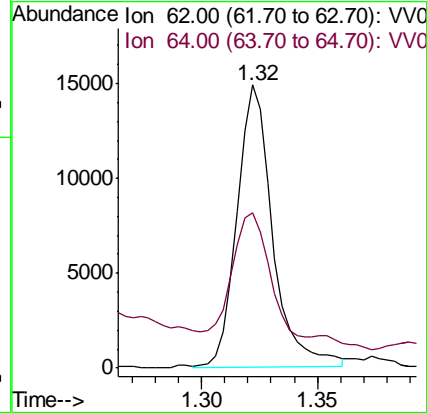
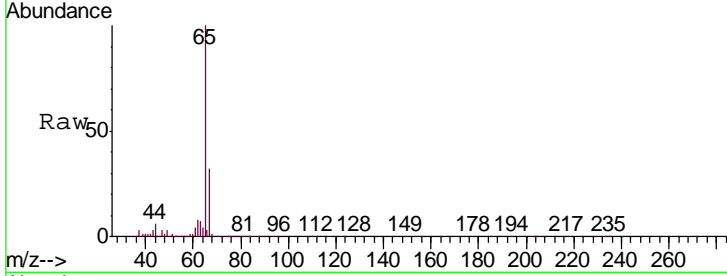




#5
 Vinyl chloride
 Concen: 2.508 ug/L
 RT: 1.32 min Scan# 72
 Delta R.T. 0.00 min
 Lab File: VV013504.D
 Acq: 06 Nov 2019 17:34

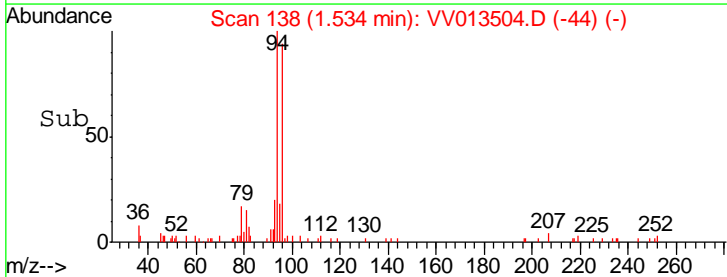
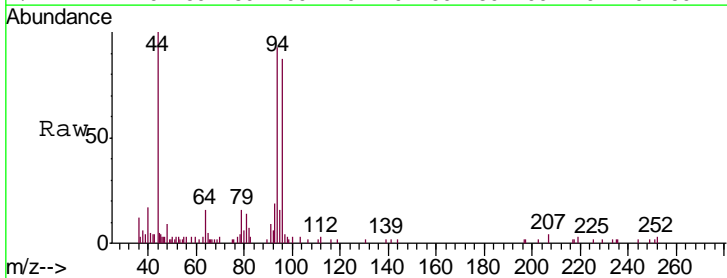
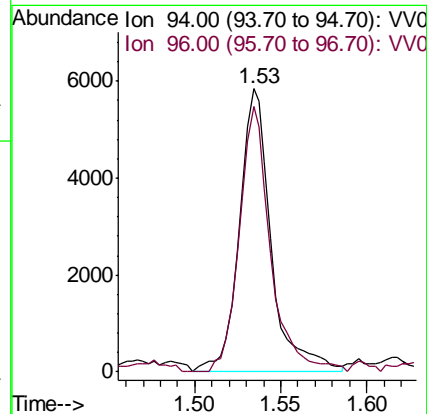
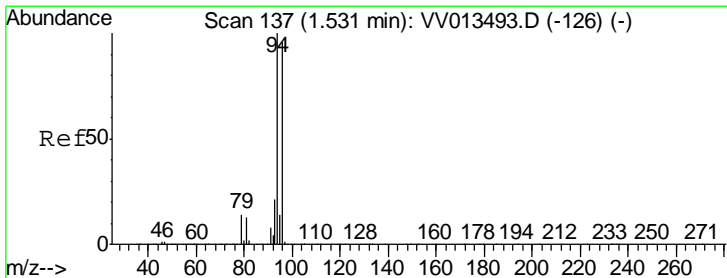
Instrument :
 MSVOA_V
 ClientSampled :
 MDL07

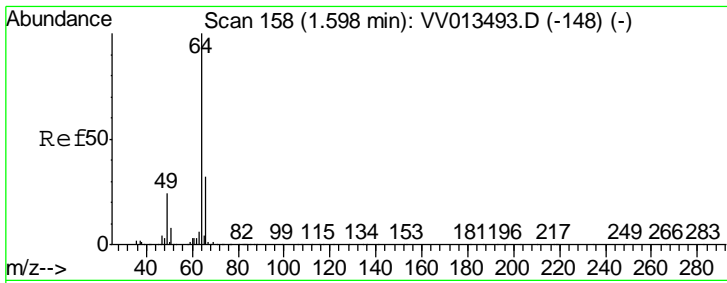
Tgt Ion: 62 Resp: 15945
 Ion Ratio Lower Upper
 62 100
 64 54.8 23.1 42.9#



#6
 Bromomethane
 Concen: 2.482 ug/L
 RT: 1.53 min Scan# 138
 Delta R.T. 0.00 min
 Lab File: VV013504.D
 Acq: 06 Nov 2019 17:34

Tgt Ion: 94 Resp: 7569
 Ion Ratio Lower Upper
 94 100
 96 93.7 67.4 125.2

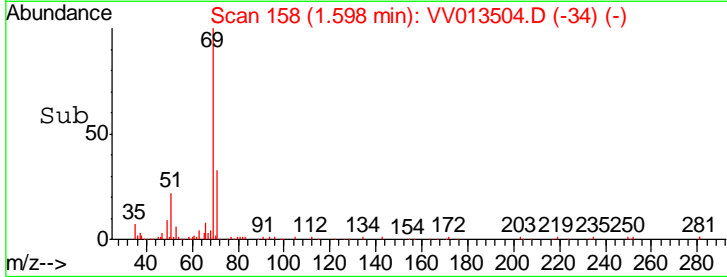
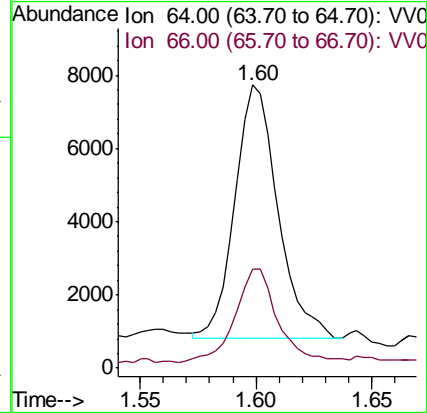
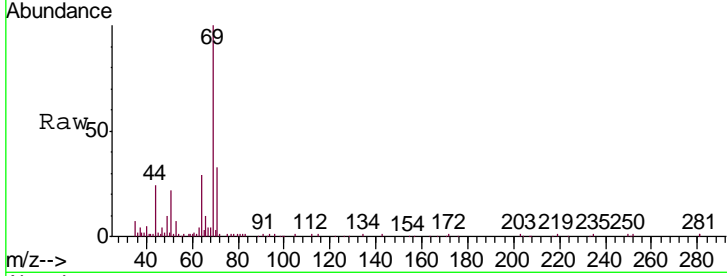




#8
 Chloroethane
 Concen: 2.514 ug/L
 RT: 1.60 min Scan# 158
 Delta R.T. 0.00 min
 Lab File: VV013504.D
 Acq: 06 Nov 2019 17:34

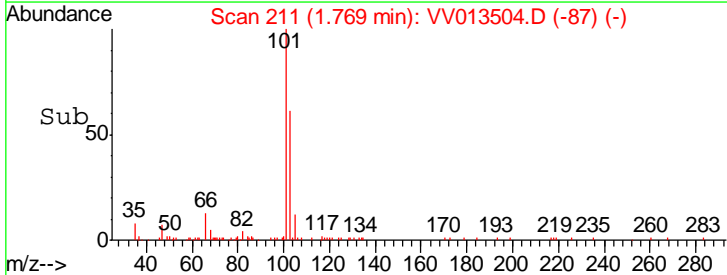
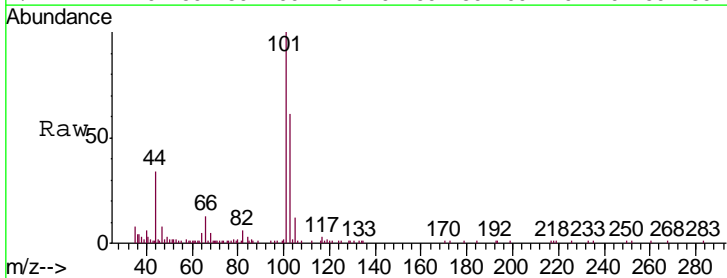
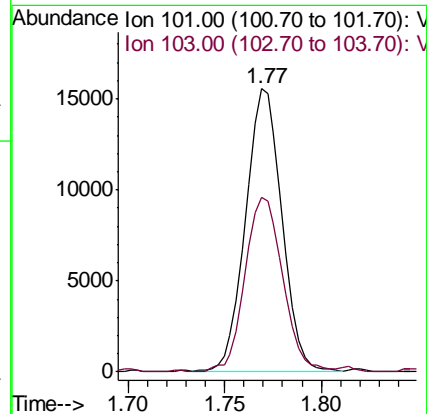
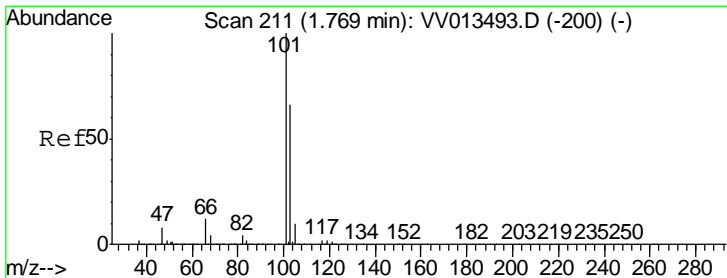
Instrument :
 MSVOA_V
 ClientSampled :
 MDL07

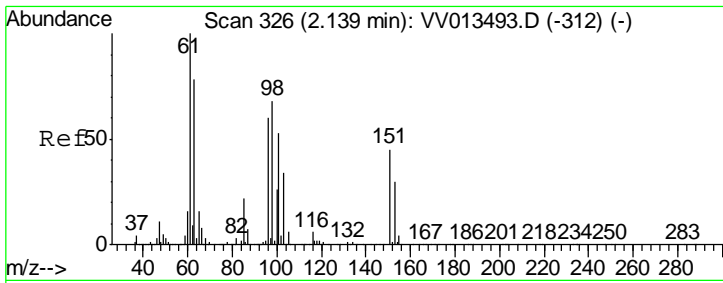
Tgt Ion: 64 Resp: 8954
 Ion Ratio Lower Upper
 64 100
 66 34.9 22.5 41.9



#9
 Trichlorofluoromethane
 Concen: 2.417 ug/L
 RT: 1.77 min Scan# 211
 Delta R.T. 0.00 min
 Lab File: VV013504.D
 Acq: 06 Nov 2019 17:34

Tgt Ion: 101 Resp: 20393
 Ion Ratio Lower Upper
 101 100
 103 63.9 52.5 78.7

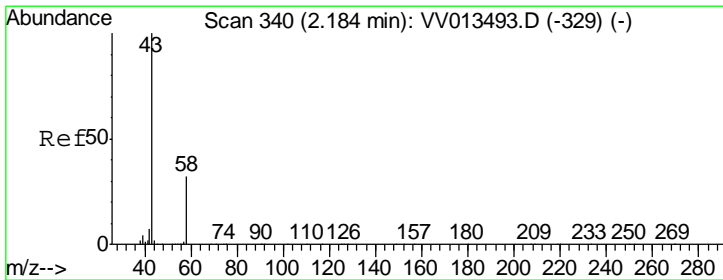
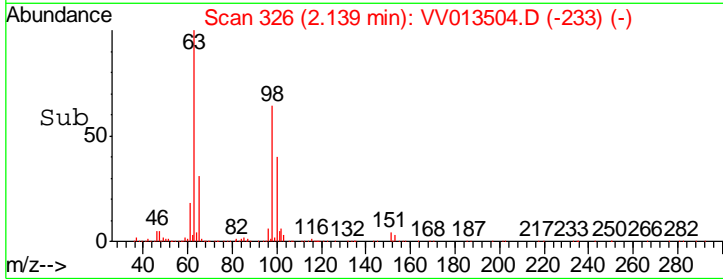
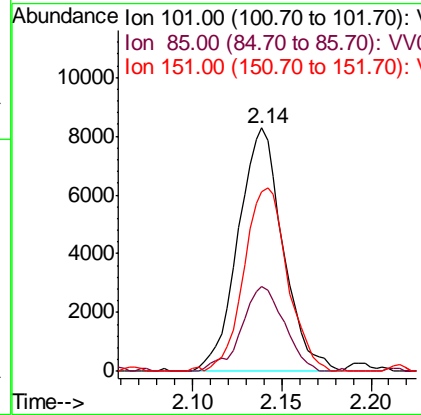
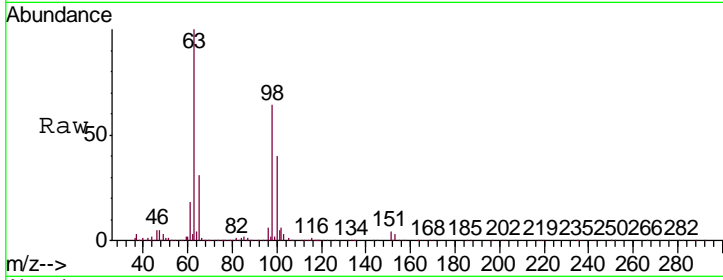




#10
 1,1,2-Trichloro-1,2,2-trifluoroethane
 Concen: 3.064 ug/L
 RT: 2.14 min Scan# 326
 Delta R.T. 0.00 min
 Lab File: VV013504.D
 Acq: 06 Nov 2019 17:34

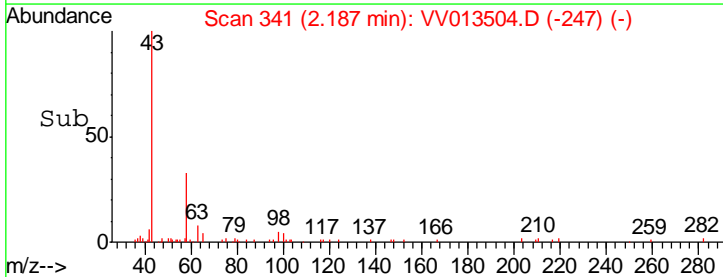
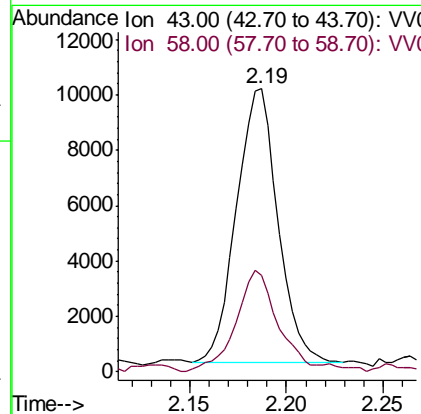
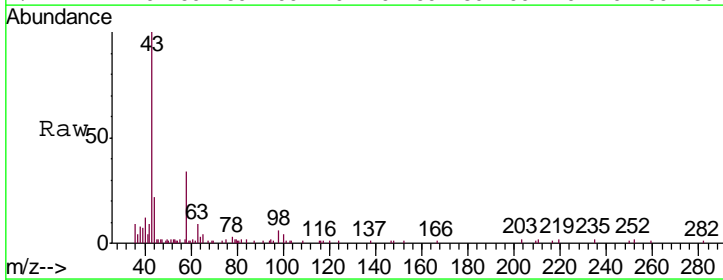
Instrument : MSVOA_V
 ClientSampled : MDL07

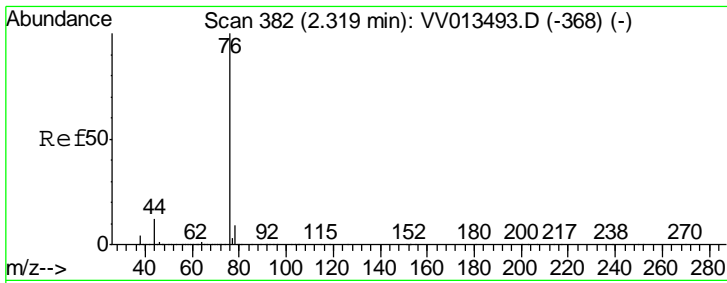
Tgt Ion	Resp	Lower	Upper
101	1459		
85	31.3	33.3	49.9#
151	73.0	69.5	104.3



#13
 Acetone
 Concen: 4.226 ug/L
 RT: 2.19 min Scan# 341
 Delta R.T. 0.00 min
 Lab File: VV013504.D
 Acq: 06 Nov 2019 17:34

Tgt Ion	Resp	Lower	Upper
43	14695		
58	37.6	0.0	65.2

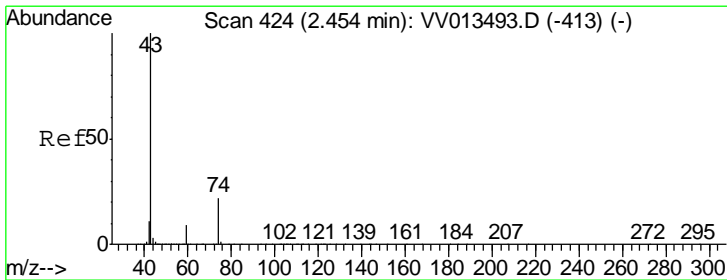
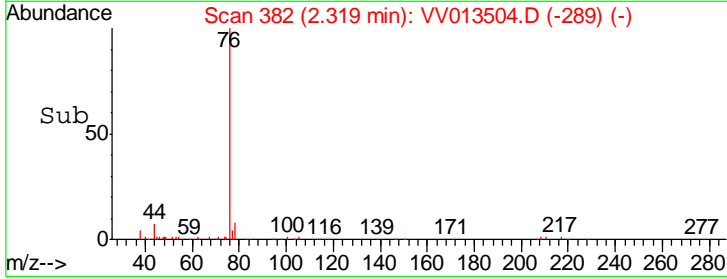
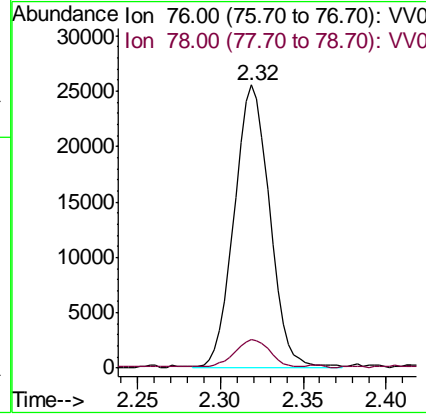
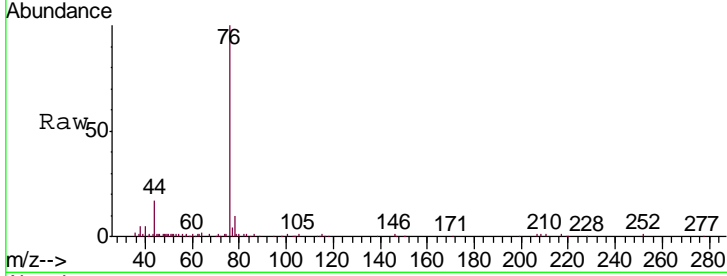




#14
 Carbon disulfide
 Concen: 2.408 ug/L
 RT: 2.32 min Scan# 382
 Delta R.T. 0.00 min
 Lab File: VV013504.D
 Acq: 06 Nov 2019 17:34

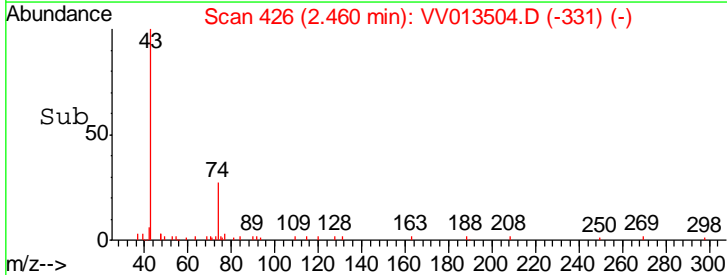
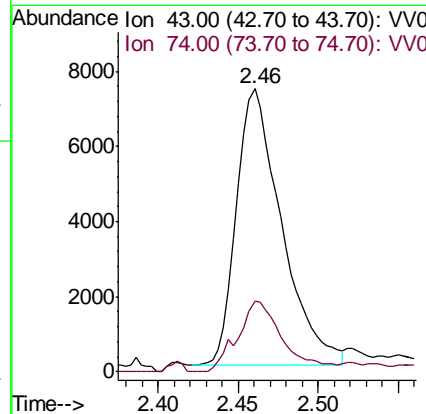
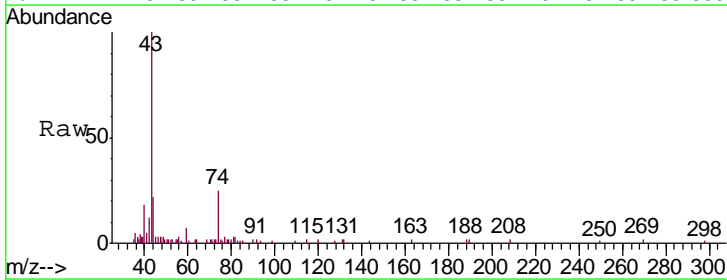
Instrument : MSVOA_V
 ClientSampled : VV013504.D
 MDL07

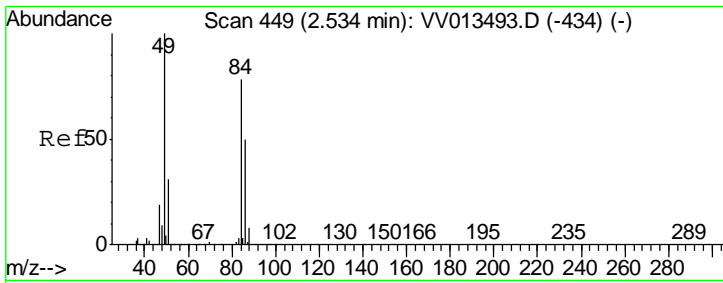
Tgt Ion	Resp	Lower	Upper
76	38228		
78	10.0	7.3	10.9



#15
 Methyl Acetate
 Concen: 2.252 ug/L
 RT: 2.46 min Scan# 426
 Delta R.T. 0.01 min
 Lab File: VV013504.D
 Acq: 06 Nov 2019 17:34

Tgt Ion	Resp	Lower	Upper
43	14287		
74	19.3	17.7	26.5

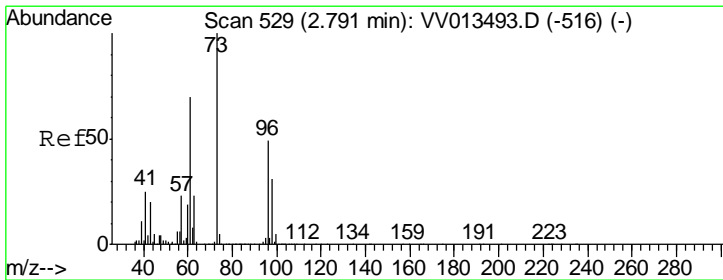
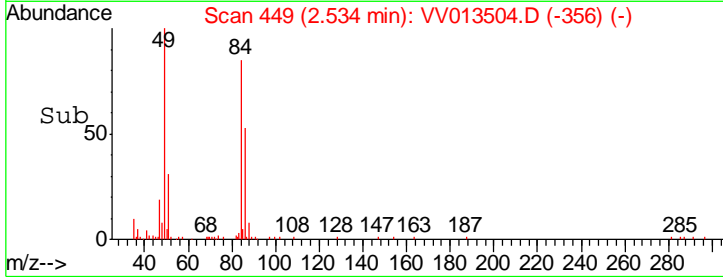
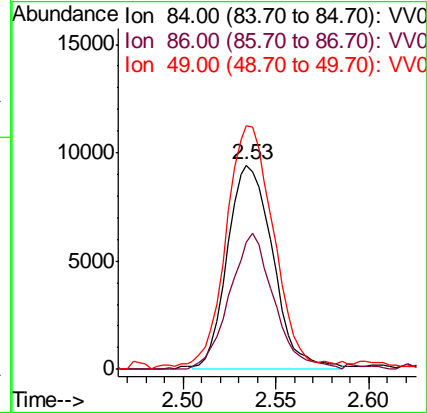
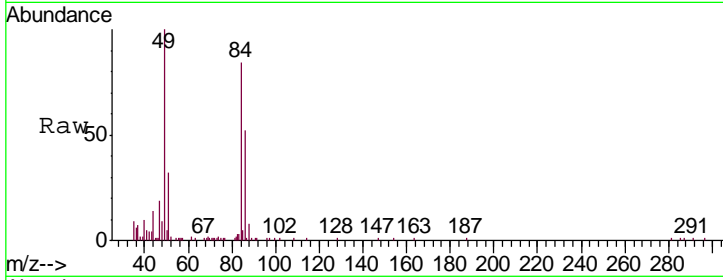




#16
 Methylene chloride
 Concen: 2.622 ug/L
 RT: 2.53 min Scan# 449
 Delta R.T. 0.00 min
 Lab File: VV013504.D
 Acq: 06 Nov 2019 17:34

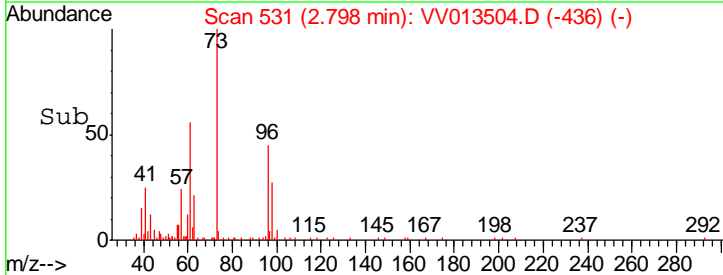
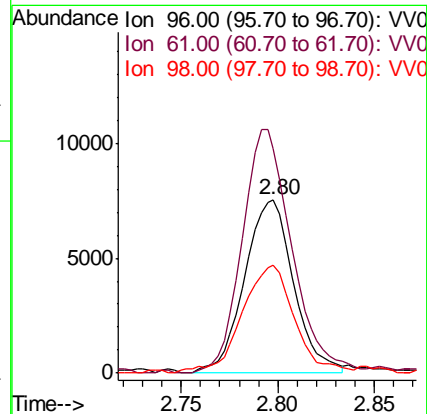
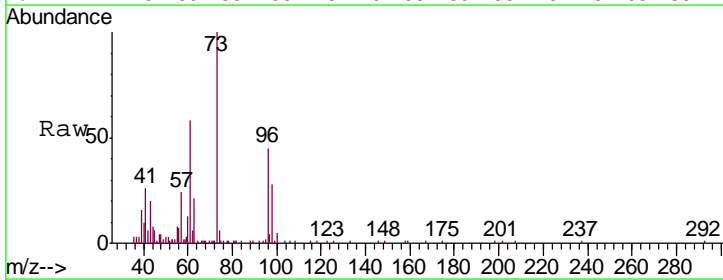
Instrument :
 MSVOA_V
 ClientSampled :
 MDL07

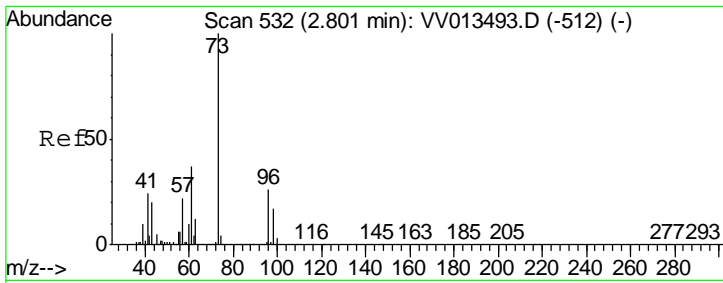
Tgt Ion	Resp	Lower	Upper
84	16095		
86	62.1	44.7	83.1
49	119.1	89.2	165.8



#17
 trans-1,2-Dichloroethene
 Concen: 2.359 ug/L
 RT: 2.80 min Scan# 531
 Delta R.T. 0.01 min
 Lab File: VV013504.D
 Acq: 06 Nov 2019 17:34

Tgt Ion	Resp	Lower	Upper
96	13327		
61	129.2	100.4	186.6
98	62.4	44.7	83.1

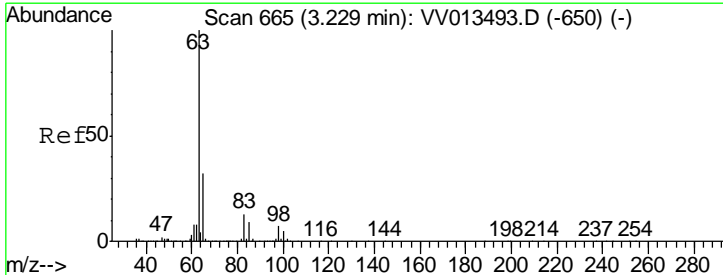
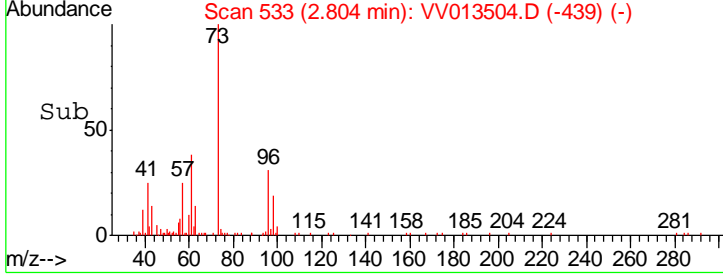
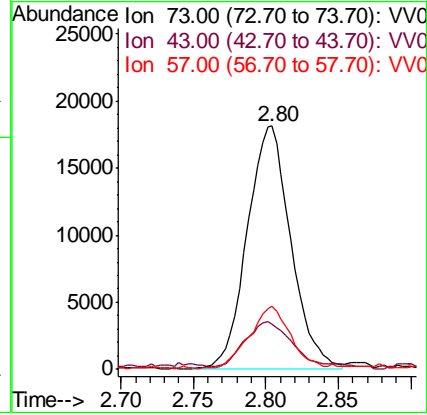
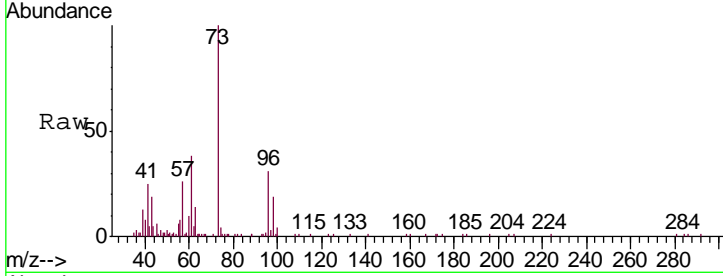




#18
 Methyl tert-butyl Ether
 Concen: 2.212 ug/L
 RT: 2.80 min Scan# 533
 Delta R.T. 0.00 min
 Lab File: VV013504.D
 Acq: 06 Nov 2019 17:34

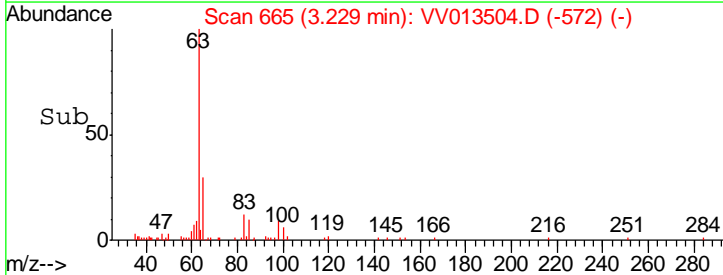
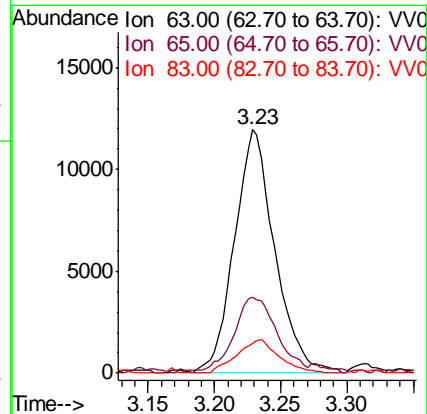
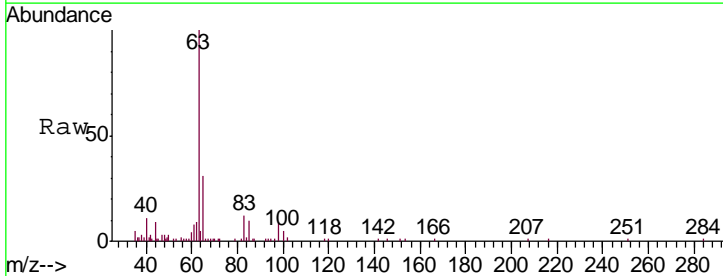
Instrument :
 MSVOA_V
 ClientSampled :
 MDL07

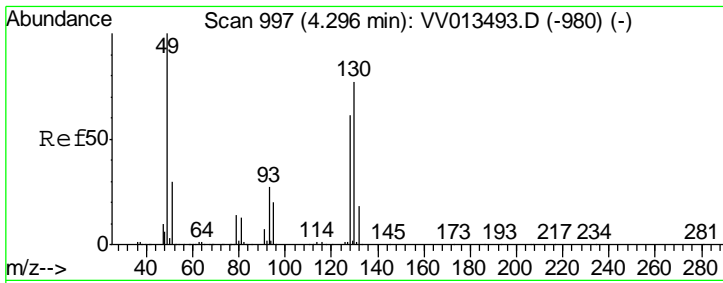
Tgt Ion	Resp	Lower	Upper
73	38096		
43	18.7	15.7	23.5
57	24.8	18.1	27.1



#19
 1,1-Dichloroethane
 Concen: 2.348 ug/L
 RT: 3.23 min Scan# 665
 Delta R.T. 0.00 min
 Lab File: VV013504.D
 Acq: 06 Nov 2019 17:34

Tgt Ion	Resp	Lower	Upper
63	25285		
65	31.0	22.2	41.2
83	12.1	8.9	16.5

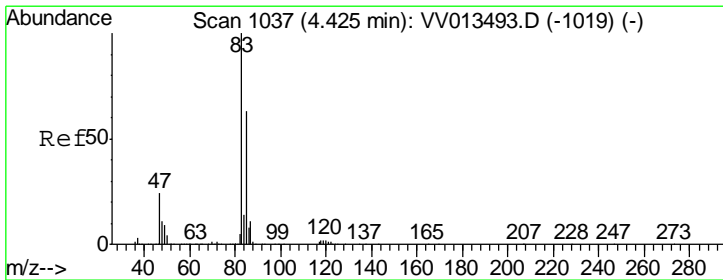
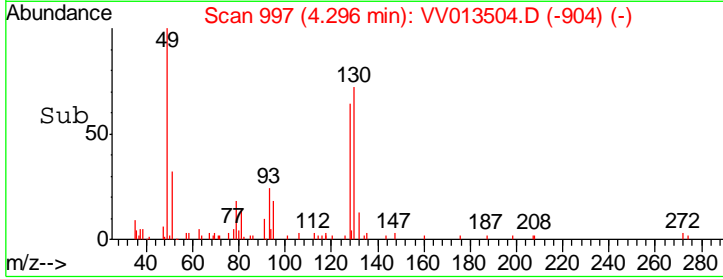
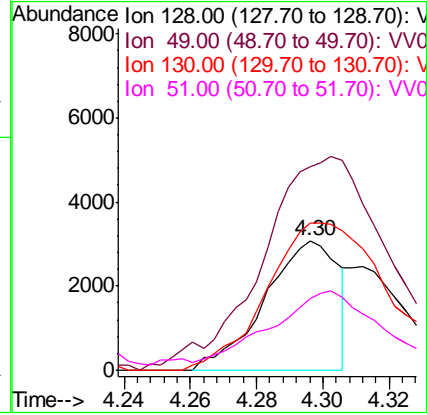
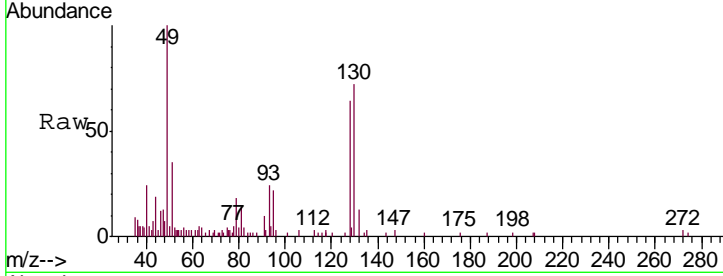




#23
 Bromochloromethane
 Concen: 1.457 ug/L
 RT: 4.30 min Scan# 997
 Delta R.T. 0.00 min
 Lab File: VV013504.D
 Acq: 06 Nov 2019 17:34

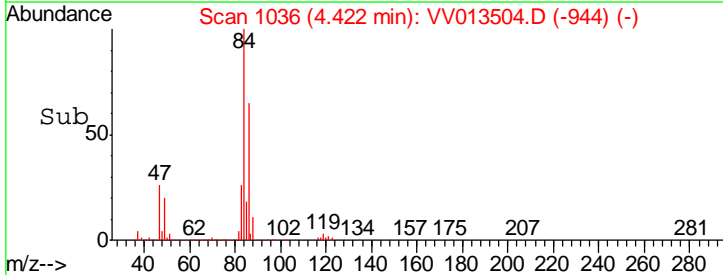
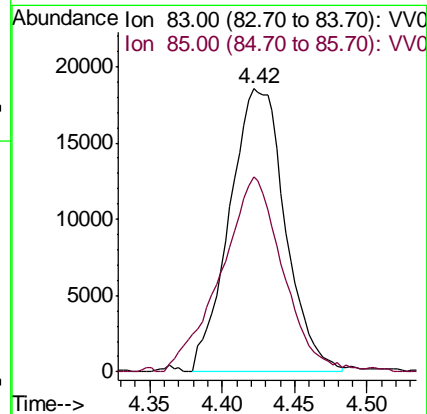
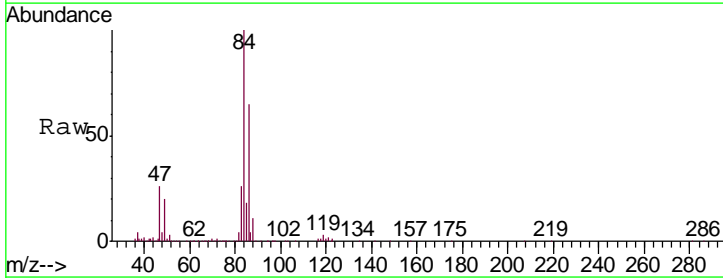
Instrument :
 MSVOA_V
 ClientSampled :
 MDL07

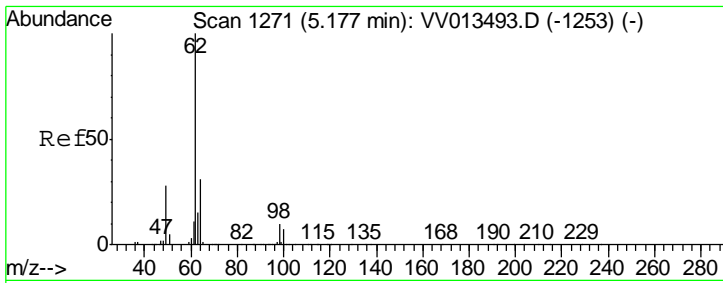
Tgt Ion	Resp	Lower	Upper
128	4749		
49	148.3	115.8	215.2
130	106.8	89.1	165.5
51	52.0	40.0	60.0



#25
 Chloroform
 Concen: 4.482 ug/L
 RT: 4.42 min Scan# 1036
 Delta R.T. -0.00 min
 Lab File: VV013504.D
 Acq: 06 Nov 2019 17:34

Tgt Ion	Resp	Lower	Upper
83	49669		
85	68.8	44.4	82.5

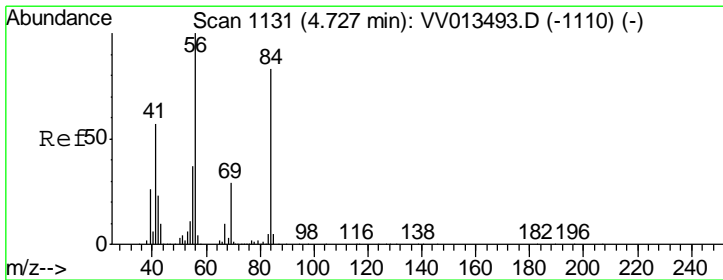
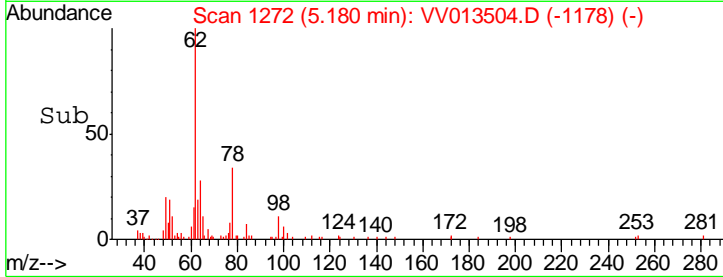
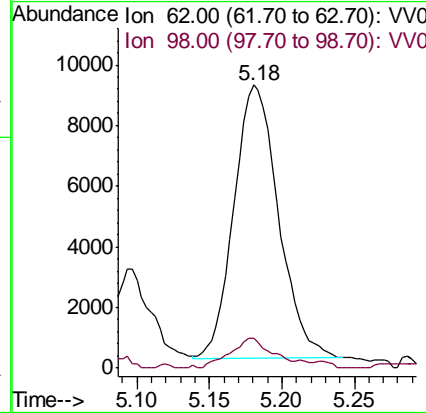
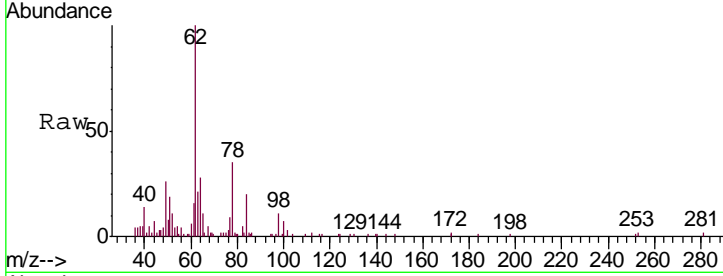




#27
 1,2-Dichloroethane
 Concen: 2.266 ug/L
 RT: 5.18 min Scan# 1272
 Delta R.T. 0.00 min
 Lab File: VV013504.D
 Acq: 06 Nov 2019 17:34

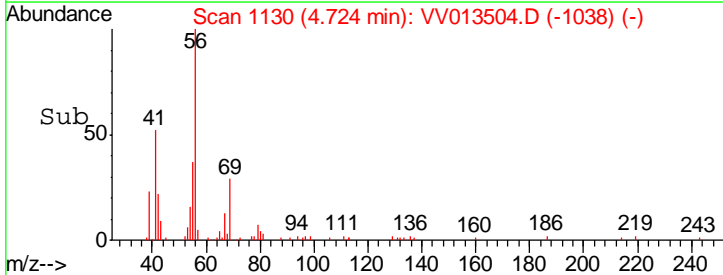
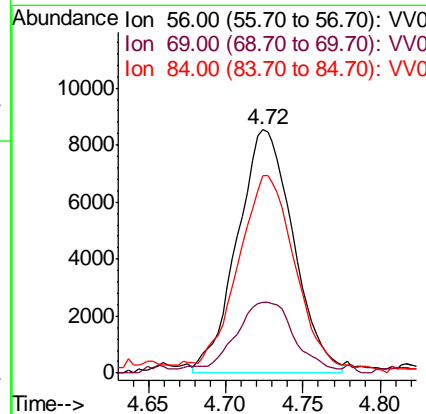
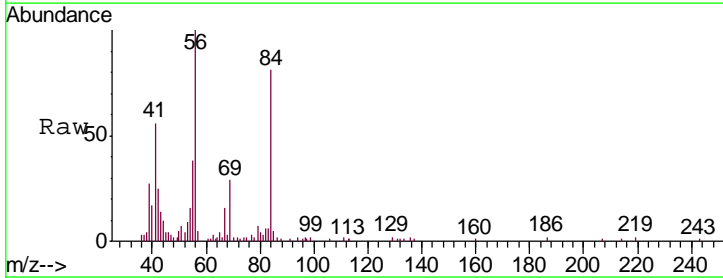
Instrument :
 MSVOA_V
 ClientSampled :
 MDL07

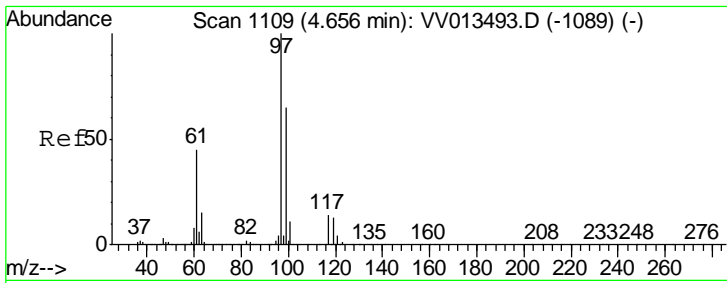
Tgt Ion	Resp	Lower	Upper
62	19246		
98	10.8	8.2	12.4



#29
 Cyclohexane
 Concen: 2.258 ug/L
 RT: 4.72 min Scan# 1130
 Delta R.T. -0.00 min
 Lab File: VV013504.D
 Acq: 06 Nov 2019 17:34

Tgt Ion	Resp	Lower	Upper
56	21514		
69	29.6	23.7	35.5
84	77.5	66.3	99.5

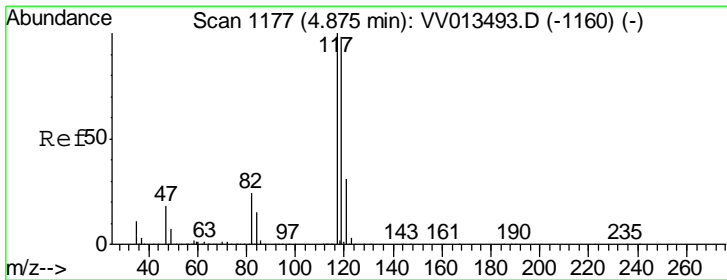
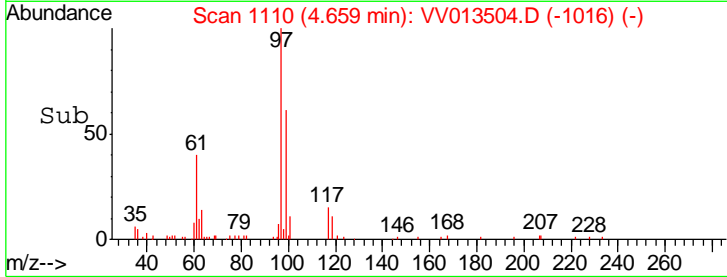
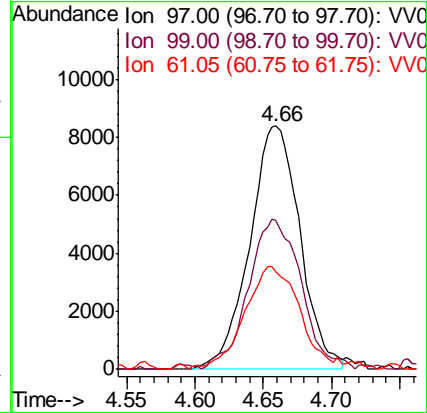
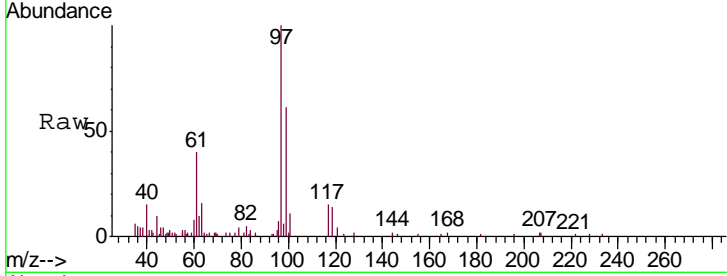




#30
 1,1,1-Trichloroethane
 Concen: 2.327 ug/L
 RT: 4.66 min Scan# 1110
 Delta R.T. 0.00 min
 Lab File: VV013504.D
 Acq: 06 Nov 2019 17:34

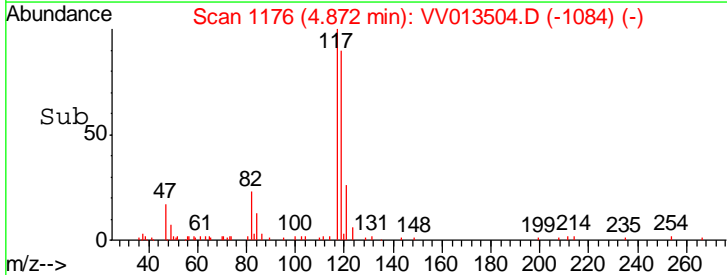
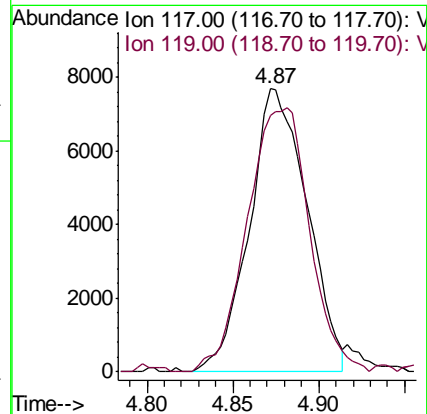
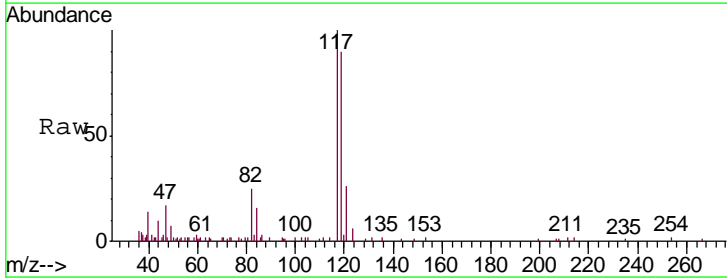
Instrument :
 MSVOA_V
 ClientSampled :
 MDL07

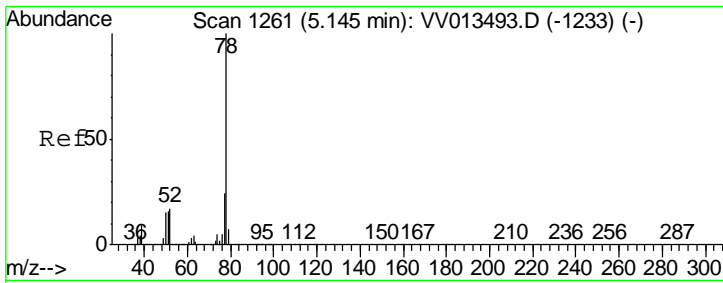
Tgt Ion	Resp	Lower	Upper
97	21485		
99	63.9	52.0	78.0
61	45.5	35.8	53.8



#31
 Carbon tetrachloride
 Concen: 2.182 ug/L
 RT: 4.87 min Scan# 1176
 Delta R.T. -0.00 min
 Lab File: VV013504.D
 Acq: 06 Nov 2019 17:34

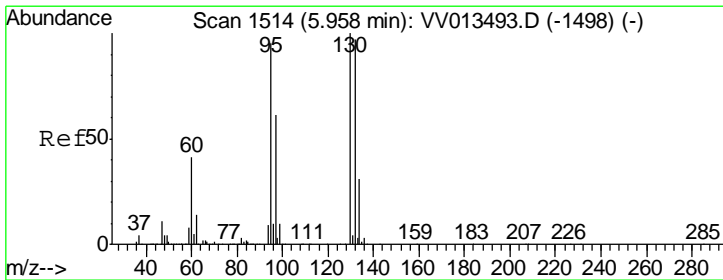
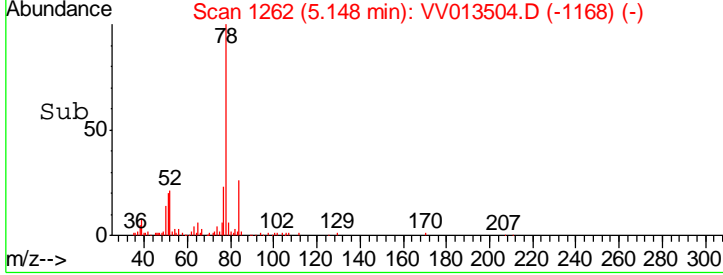
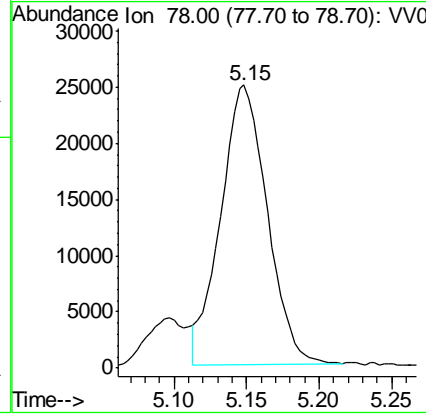
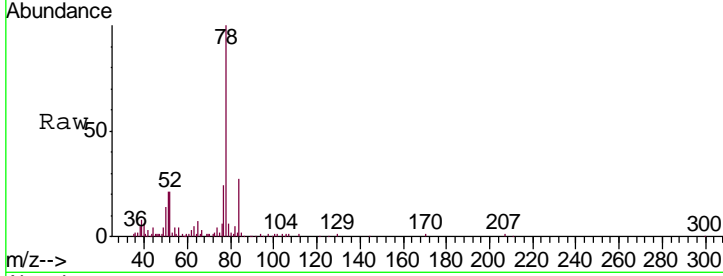
Tgt Ion	Resp	Lower	Upper
117	17962		
119	100.4	77.6	116.4





#33
 Benzene
 Concen: 2.341 ug/L
 RT: 5.15 min Scan# 1262
 Delta R.T. 0.00 min
 Lab File: VV013504.D
 Acq: 06 Nov 2019 17:34
 Tgt Ion: 78 Resp: 55135

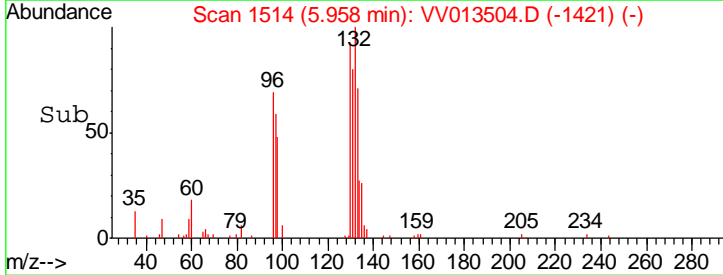
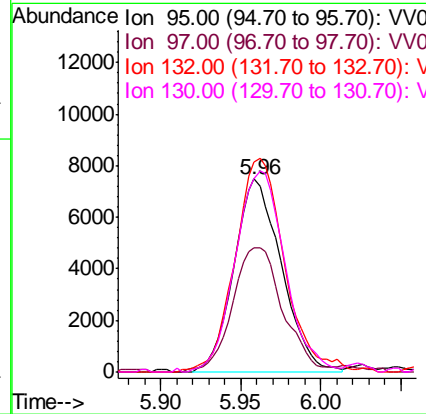
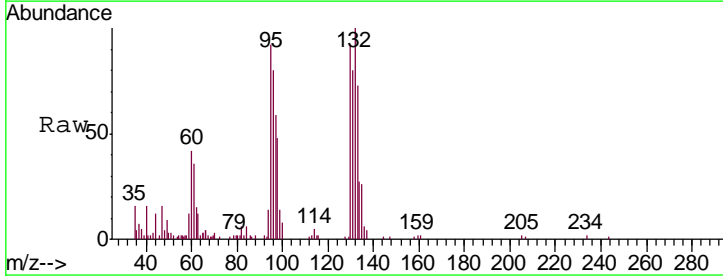
Instrument : MSVOA_V
 ClientSampled : VV013504.D
 MDL07

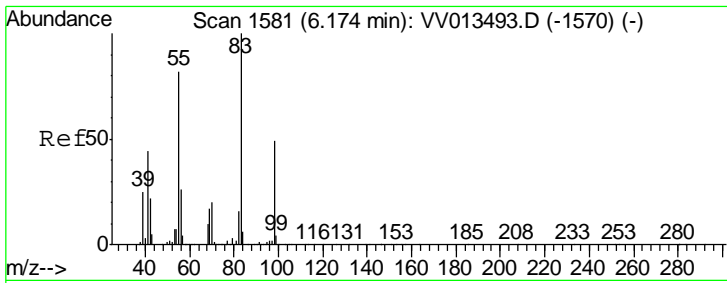


#34
 Trichloroethene
 Concen: 2.433 ug/L
 RT: 5.96 min Scan# 1514
 Delta R.T. 0.00 min
 Lab File: VV013504.D
 Acq: 06 Nov 2019 17:34

Tgt Ion: 95 Resp: 15226

Ion	Ratio	Lower	Upper
95	100		
97	64.4	45.1	83.7
132	108.9	71.7	133.1
130	100.5	73.8	137.2

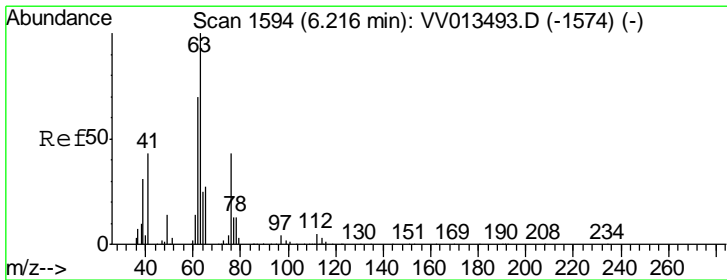
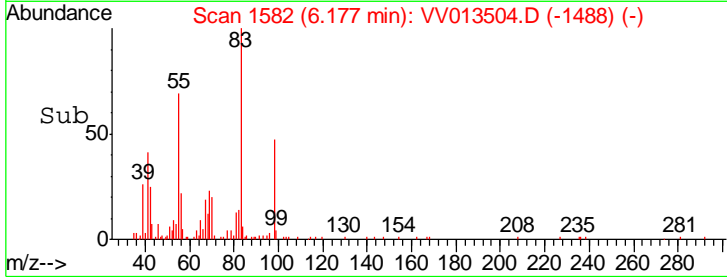
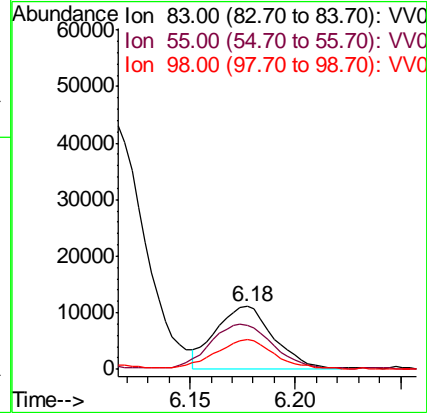
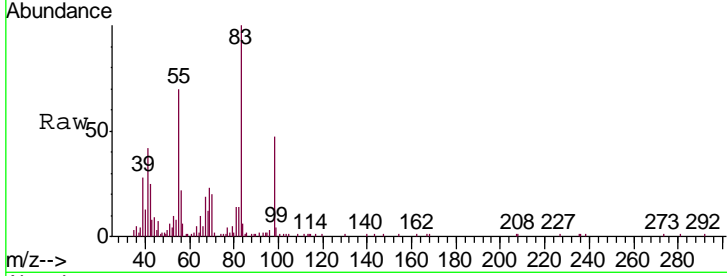




#35
 Methylcyclohexane
 Concen: 2.158 ug/L
 RT: 6.18 min Scan# 1582
 Delta R.T. 0.00 min
 Lab File: VV013504.D
 Acq: 06 Nov 2019 17:34

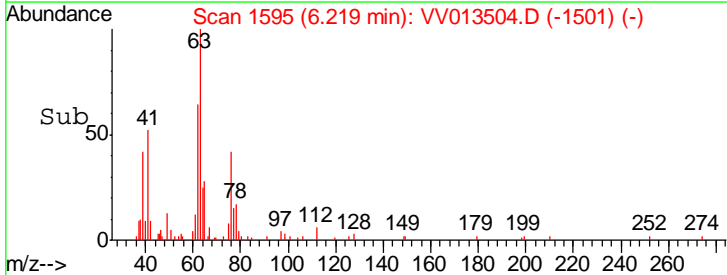
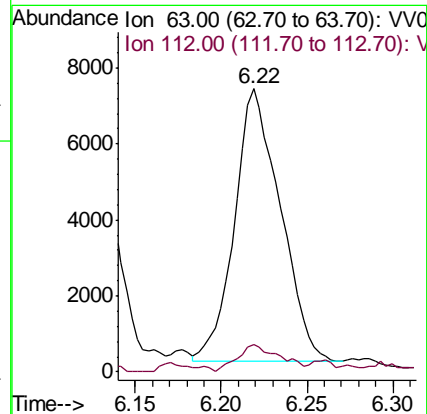
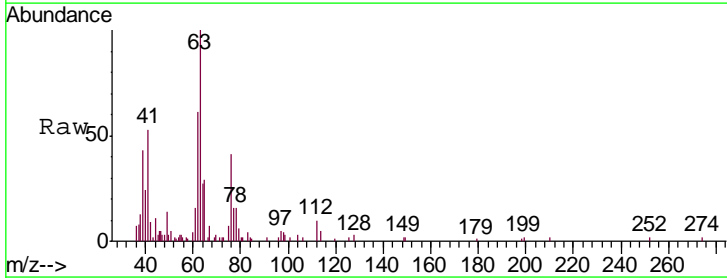
Instrument :
 MSVOA_V
 ClientSampled :
 MDL07

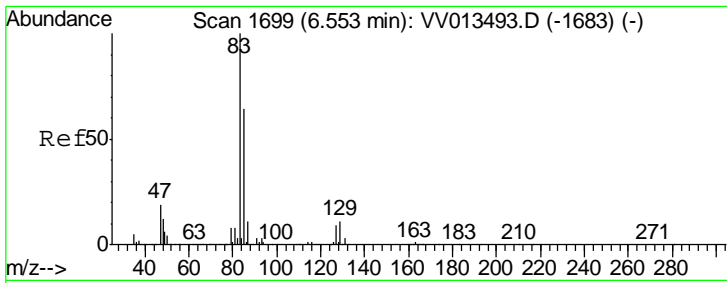
Tgt Ion	Resp	Lower	Upper
83	20825		
55	78.2	63.4	95.0
98	50.1	38.6	58.0



#37
 1,2-Dichloropropane
 Concen: 2.154 ug/L
 RT: 6.22 min Scan# 1595
 Delta R.T. 0.00 min
 Lab File: VV013504.D
 Acq: 06 Nov 2019 17:34

Tgt Ion	Resp	Lower	Upper
63	13355		
112	8.1	3.9	5.9#

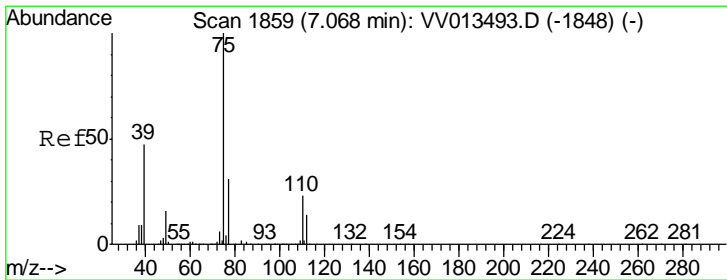
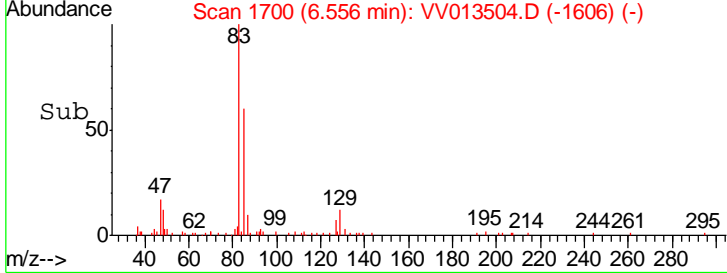
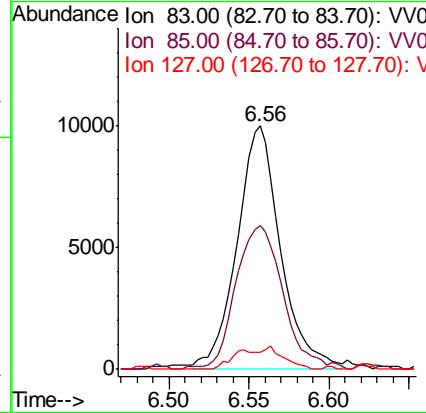
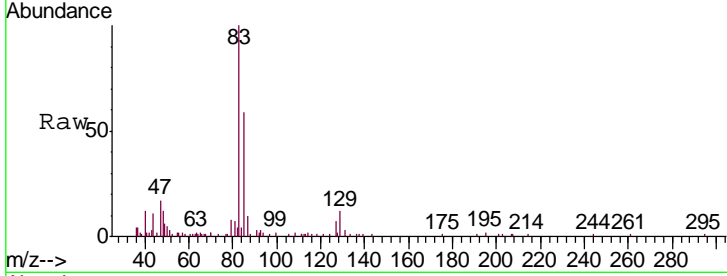




#38
 Bromodichloromethane
 Concen: 2.282 ug/L
 RT: 6.56 min Scan# 1700
 Delta R.T. 0.00 min
 Lab File: VV013504.D
 Acq: 06 Nov 2019 17:34

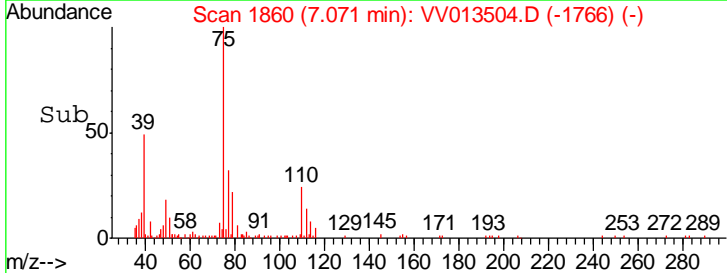
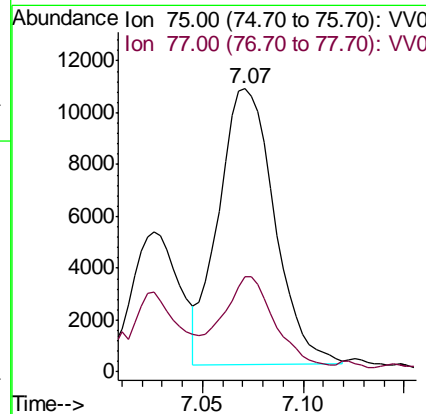
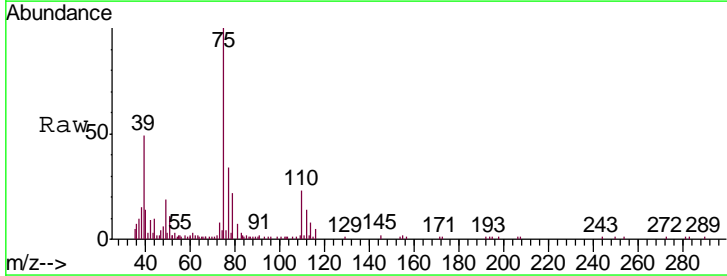
Instrument : MSVOA_V
 ClientSampleID : MDL07

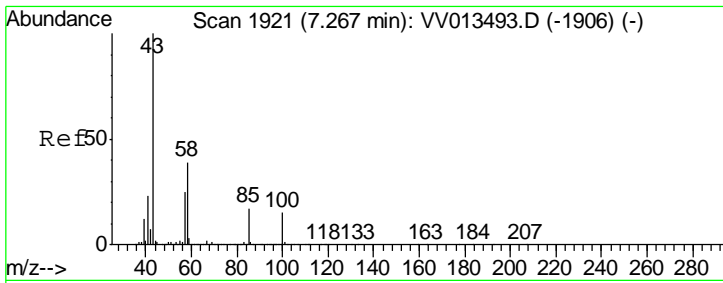
Tgt Ion	Resp	Lower	Upper
83	18609		
83	100		
85	58.8	44.8	83.2
127	7.1	7.1	10.7#



#39
 cis-1,3-Dichloropropene
 Concen: 2.192 ug/L
 RT: 7.07 min Scan# 1860
 Delta R.T. 0.00 min
 Lab File: VV013504.D
 Acq: 06 Nov 2019 17:34

Tgt Ion	Resp	Lower	Upper
75	20647		
75	100		
77	33.6	22.0	40.8

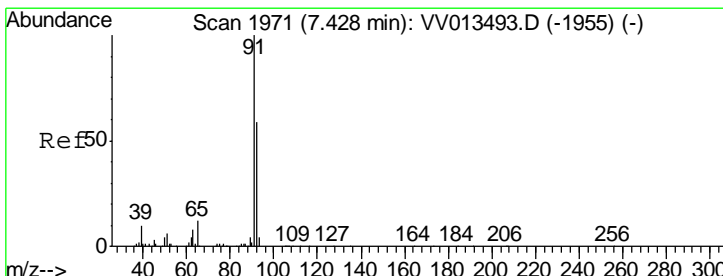
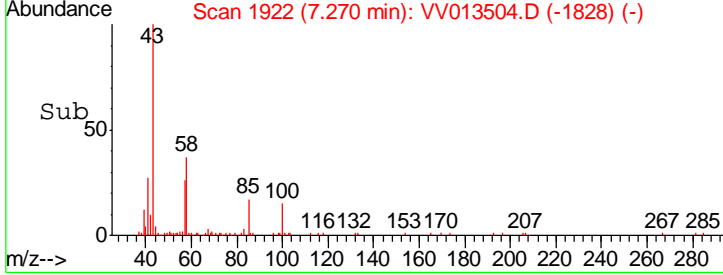
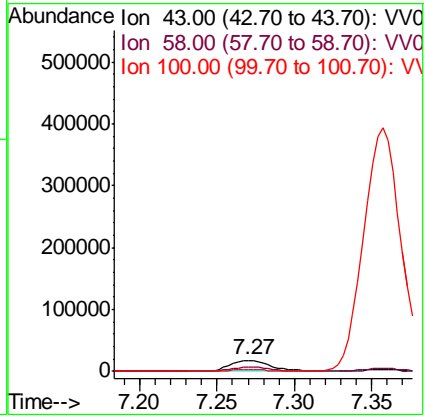
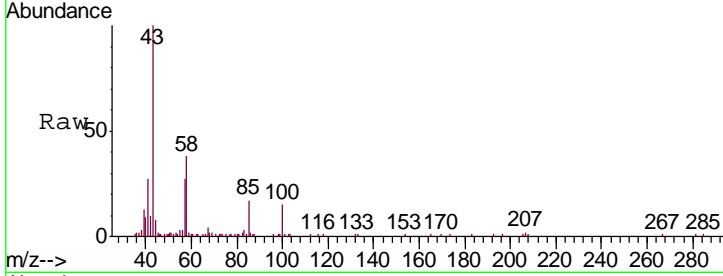




#40
 4-Methyl-2-pentanone
 Concen: 4.247 ug/L
 RT: 7.27 min Scan# 1922
 Delta R.T. 0.00 min
 Lab File: VV013504.D
 Acq: 06 Nov 2019 17:34

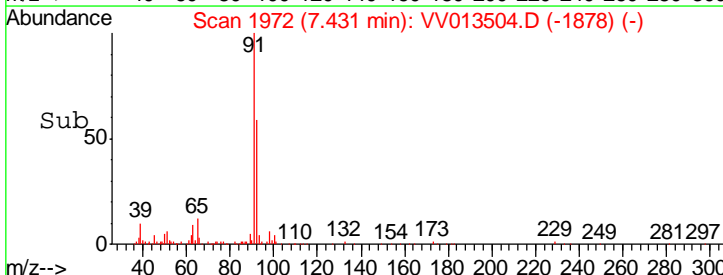
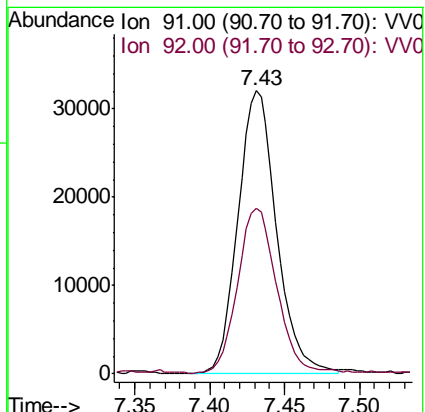
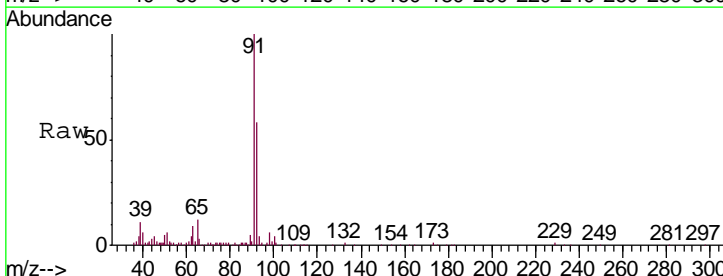
Instrument : MSVOA_V
 ClientSampled : MDL07

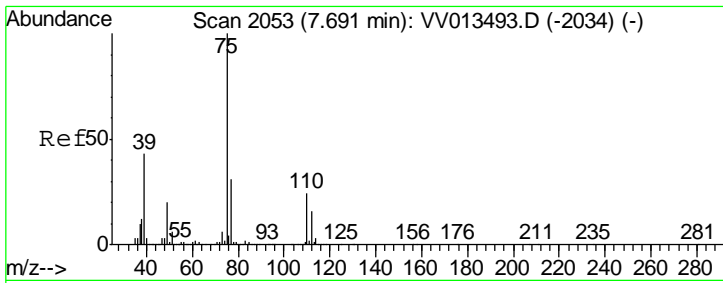
Tgt Ion	Resp	Lower	Upper
43	33939		
58	39.0	31.0	46.4
100	13.7	12.2	18.2



#42
 Toluene
 Concen: 2.354 ug/L
 RT: 7.43 min Scan# 1972
 Delta R.T. 0.00 min
 Lab File: VV013504.D
 Acq: 06 Nov 2019 17:34

Tgt Ion	Resp	Lower	Upper
91	57787		
92	58.4	41.3	76.7

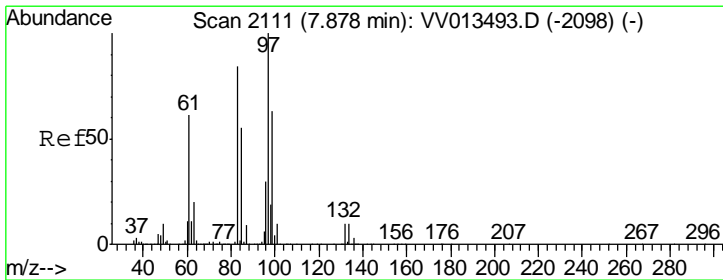
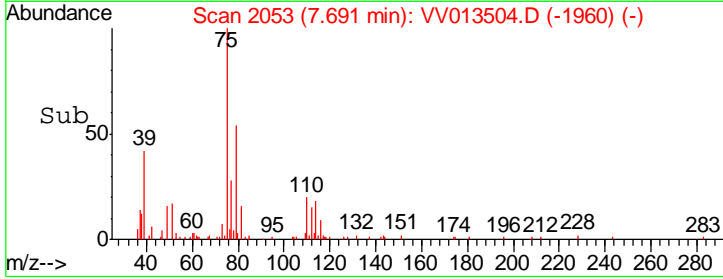
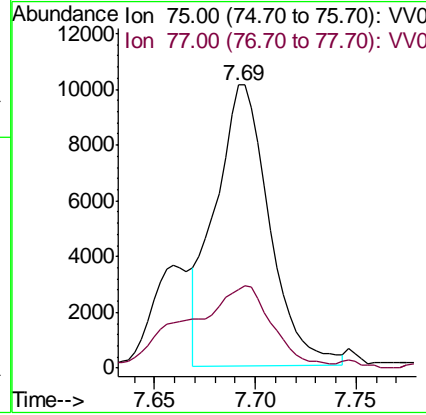
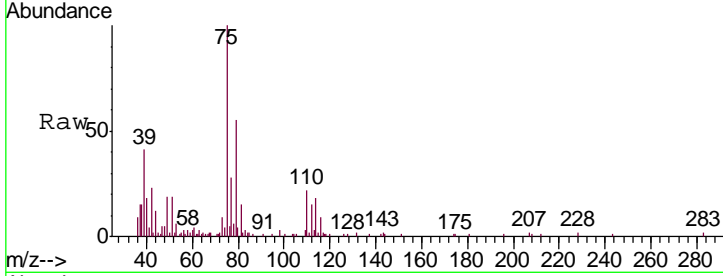




#44
 trans-1,3-Dichloropropene
 Concen: 2.304 ug/L
 RT: 7.69 min Scan# 2053
 Delta R.T. 0.00 min
 Lab File: VV013504.D
 Acq: 06 Nov 2019 17:34

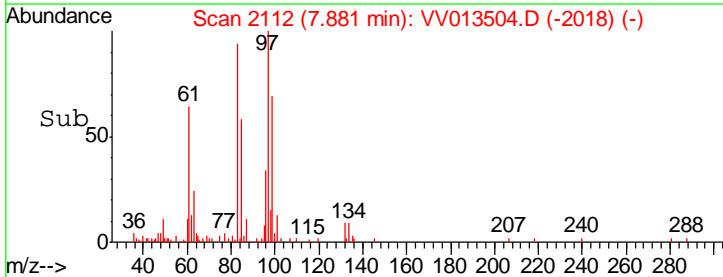
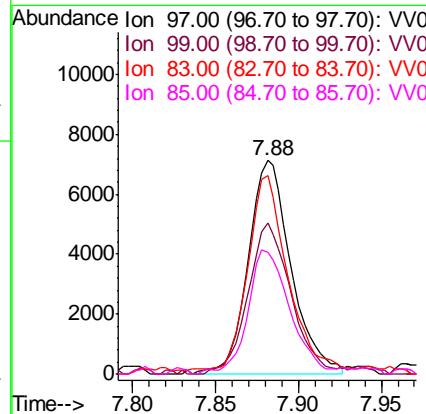
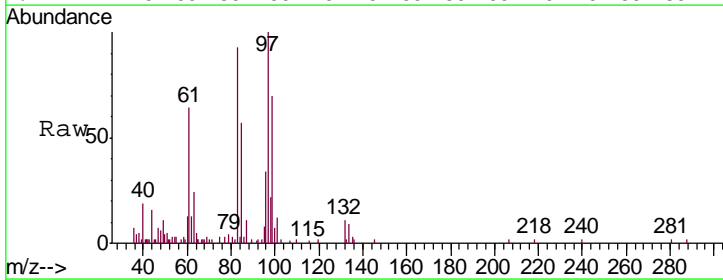
Instrument : MSVOA_V
 ClientSampled : MDL07

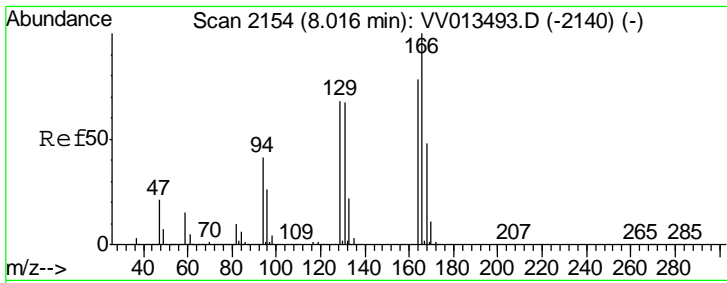
Tgt Ion: 75 Resp: 18881
 Ion Ratio Lower Upper
 75 100
 77 27.8 22.0 41.0



#45
 1,1,2-Trichloroethane
 Concen: 2.207 ug/L
 RT: 7.88 min Scan# 2112
 Delta R.T. 0.00 min
 Lab File: VV013504.D
 Acq: 06 Nov 2019 17:34

Tgt Ion: 97 Resp: 12814
 Ion Ratio Lower Upper
 97 100
 99 70.5 43.8 81.4
 83 92.6 59.1 109.9
 85 57.1 38.8 72.0



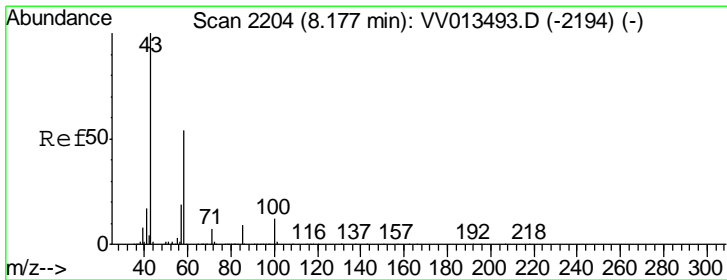
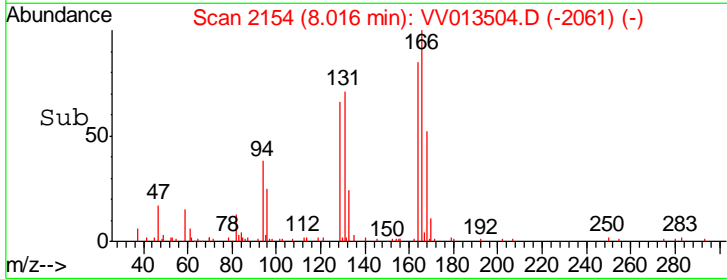
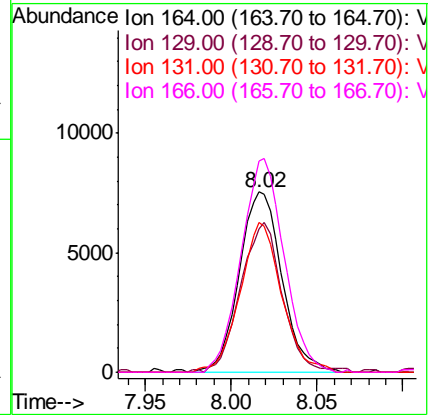
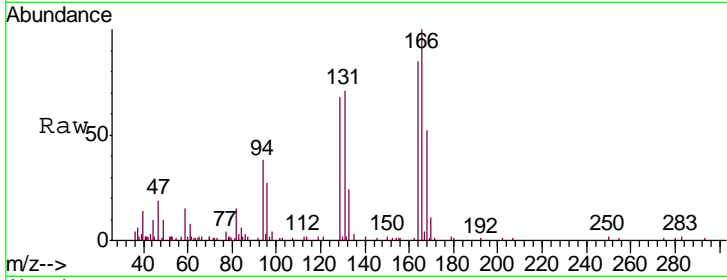


#46
 Tetrachloroethene
 Concen: 2.450 ug/L
 RT: 8.02 min Scan# 2154
 Delta R.T. 0.00 min
 Lab File: VV013504.D
 Acq: 06 Nov 2019 17:34

Instrument :
 MSVOA_V
 ClientSampled :
 MDL07

Tgt Ion: 164 Resp: 13089

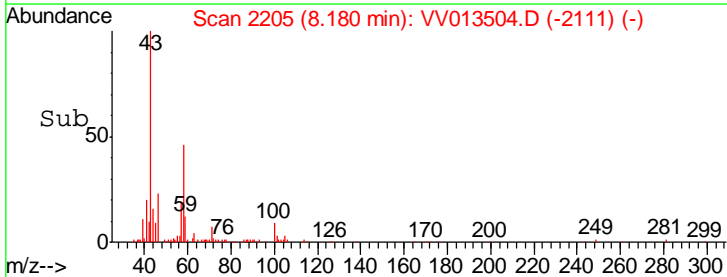
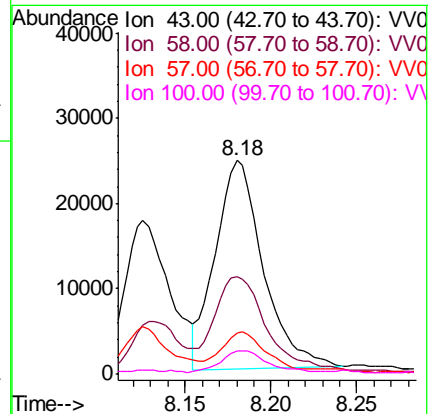
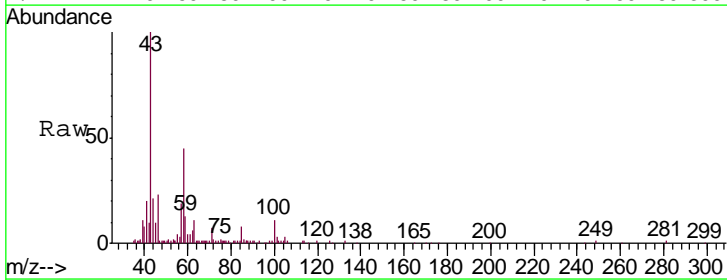
Ion	Ratio	Lower	Upper
164	100		
129	79.3	61.5	114.3
131	83.3	60.6	112.6
166	117.3	90.2	167.6

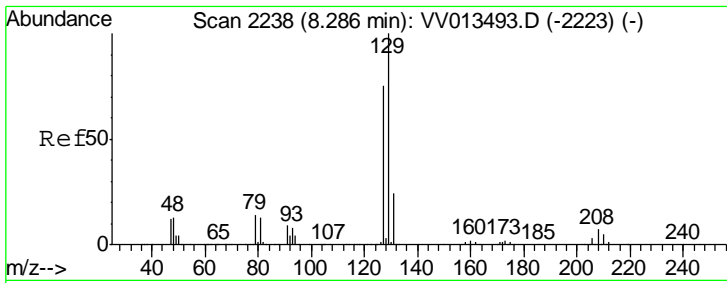


#48
 2-Hexanone
 Concen: 7.527 ug/L
 RT: 8.18 min Scan# 2205
 Delta R.T. 0.00 min
 Lab File: VV013504.D
 Acq: 06 Nov 2019 17:34

Tgt Ion: 43 Resp: 47503

Ion	Ratio	Lower	Upper
43	100		
58	49.3	43.4	65.0
57	16.2	15.2	22.8
100	11.6	9.9	14.9

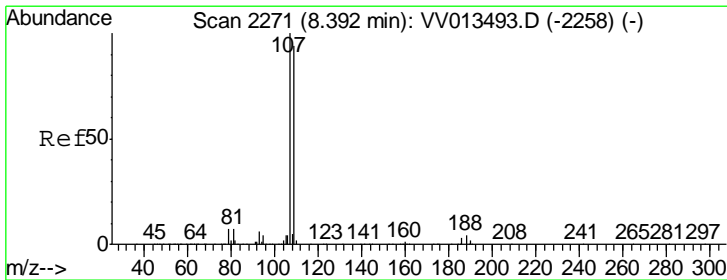
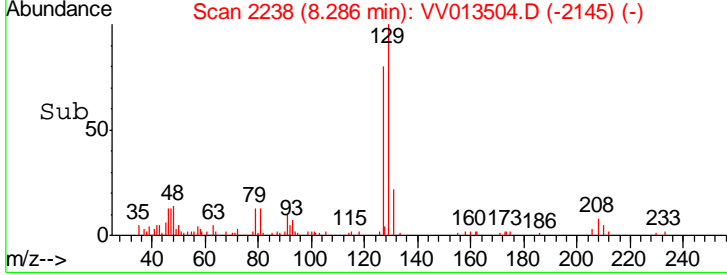
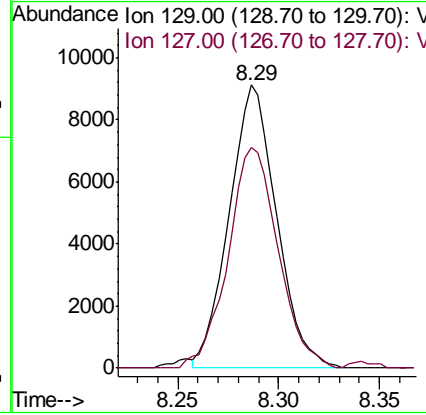
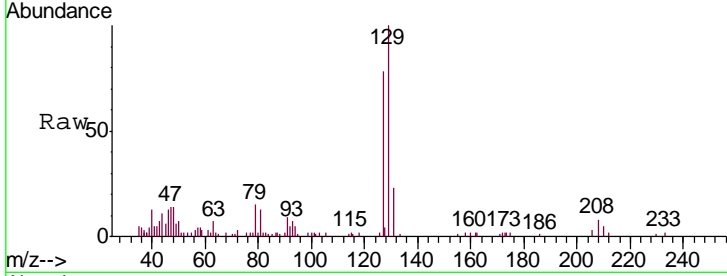




#49
 Dibromochloromethane
 Concen: 2.247 ug/L
 RT: 8.29 min Scan# 2238
 Delta R.T. 0.00 min
 Lab File: VV013504.D
 Acq: 06 Nov 2019 17:34

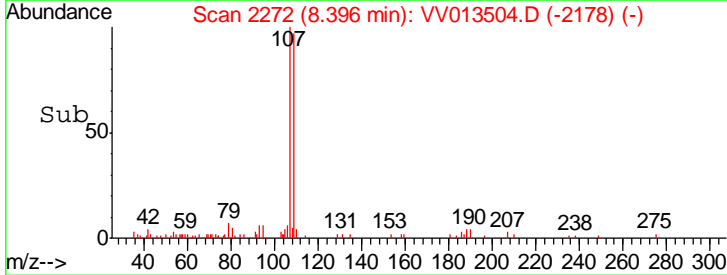
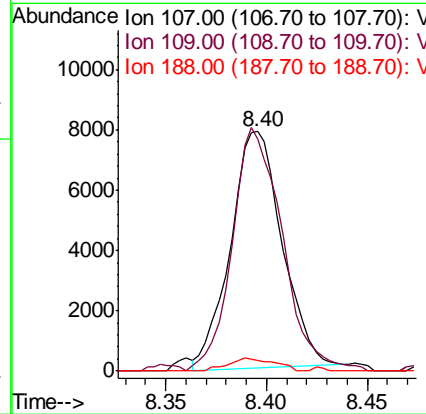
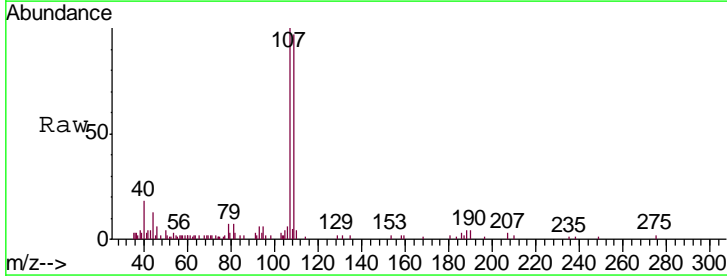
Instrument : MSVOA_V
 ClientSampled : VV013504.D
 MDL07

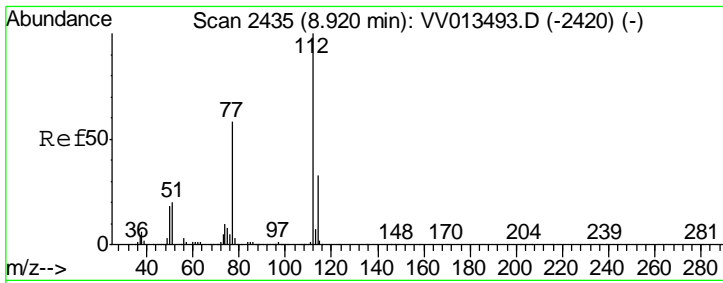
Tgt Ion	Resp	Lower	Upper
129	14999		
127	81.6	52.5	97.5



#50
 1,2-Dibromoethane
 Concen: 2.294 ug/L
 RT: 8.40 min Scan# 2272
 Delta R.T. 0.00 min
 Lab File: VV013504.D
 Acq: 06 Nov 2019 17:34

Tgt Ion	Resp	Lower	Upper
107	13971		
109	96.9	65.7	122.1
188	4.3	3.5	5.3

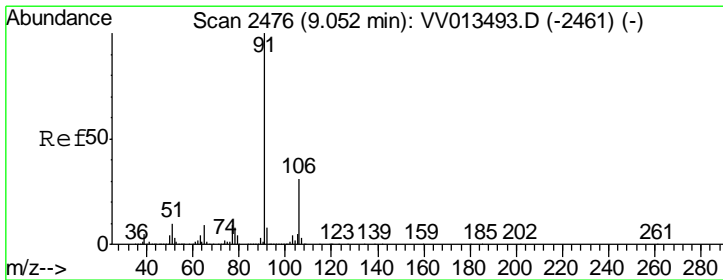
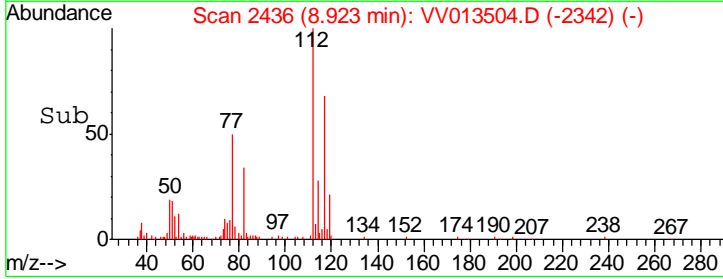
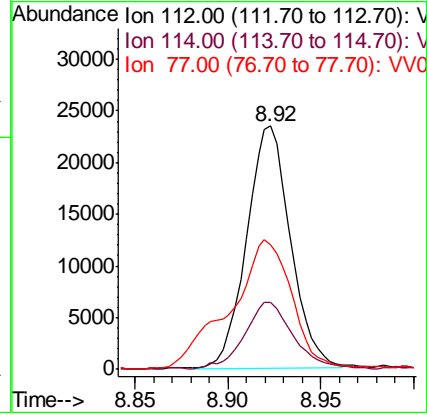
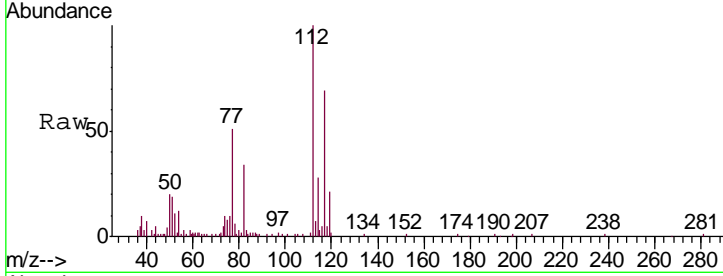




#51
 Chlorobenzene
 Concen: 2.361 ug/L
 RT: 8.92 min Scan# 2436
 Delta R.T. 0.00 min
 Lab File: VV013504.D
 Acq: 06 Nov 2019 17:34

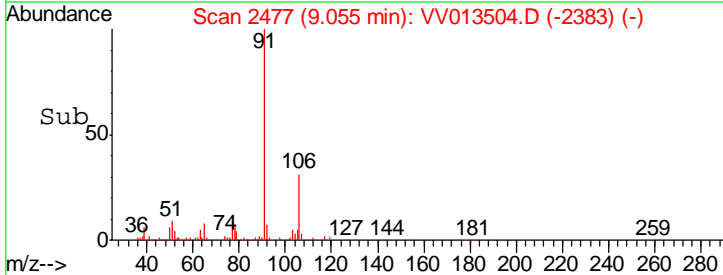
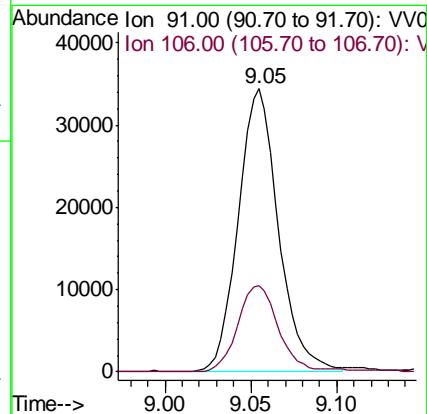
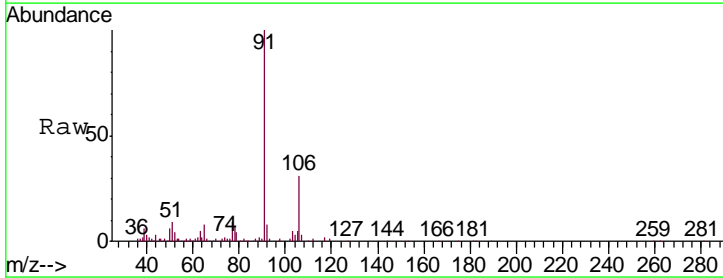
Instrument :
 MSVOA_V
 ClientSampled :
 MDL07

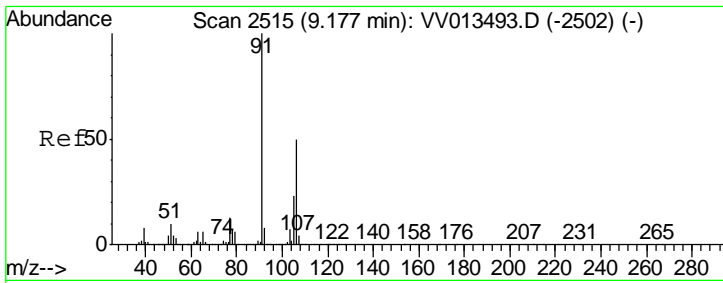
Tgt Ion	Resp	Lower	Upper
112	38518		
114	27.6	22.8	42.4
77	51.0	46.7	70.1



#52
 Ethylbenzene
 Concen: 2.107 ug/L
 RT: 9.05 min Scan# 2477
 Delta R.T. 0.00 min
 Lab File: VV013504.D
 Acq: 06 Nov 2019 17:34

Tgt Ion	Resp	Lower	Upper
91	56119		
106	30.6	22.0	40.8

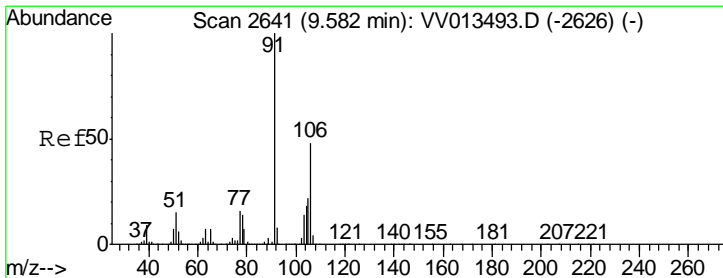
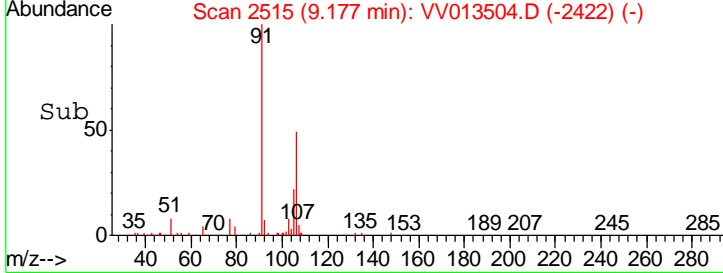
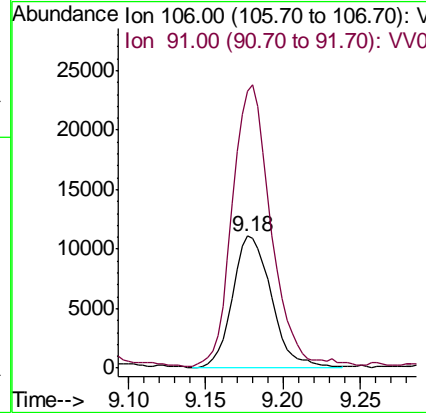
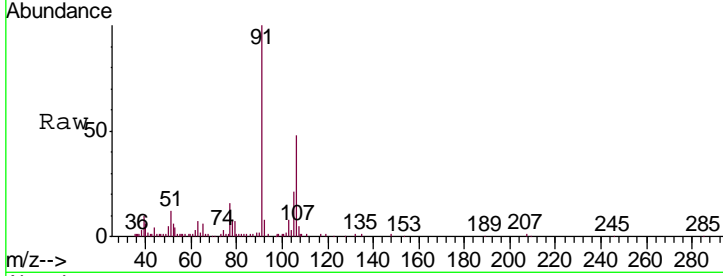




#53
 m,p-Xylene
 Concen: 1.930 ug/L
 RT: 9.18 min Scan# 2515
 Delta R.T. 0.00 min
 Lab File: VV013504.D
 Acq: 06 Nov 2019 17:34

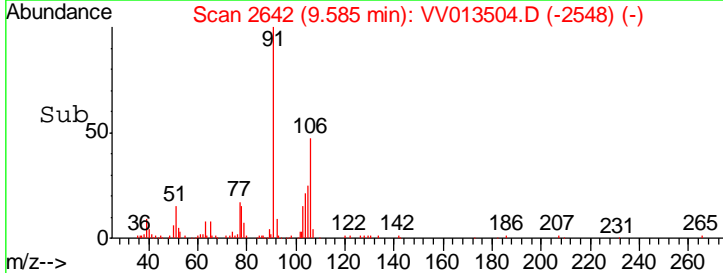
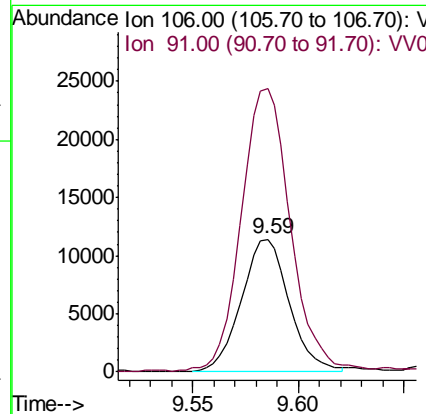
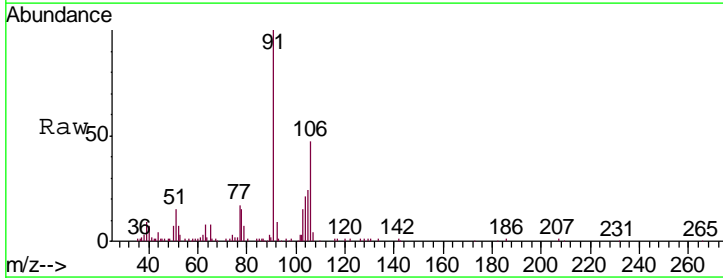
Instrument : MSVOA_V
 ClientSampled : MDL07

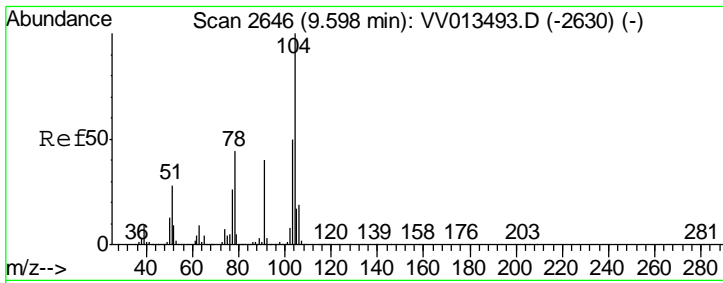
Tgt Ion:106 Resp: 19507
 Ion Ratio Lower Upper
 106 100
 91 209.7 141.6 263.0



#54
 o-xylene
 Concen: 1.864 ug/L
 RT: 9.59 min Scan# 2642
 Delta R.T. 0.00 min
 Lab File: VV013504.D
 Acq: 06 Nov 2019 17:34

Tgt Ion:106 Resp: 18072
 Ion Ratio Lower Upper
 106 100
 91 212.9 147.2 273.4

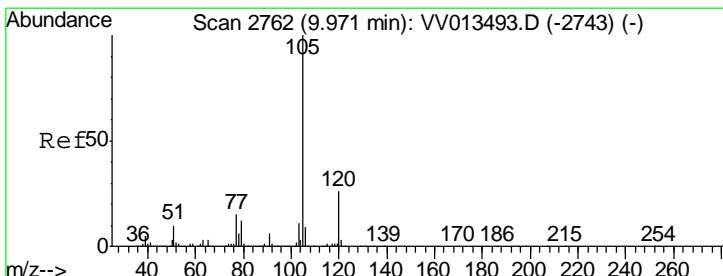
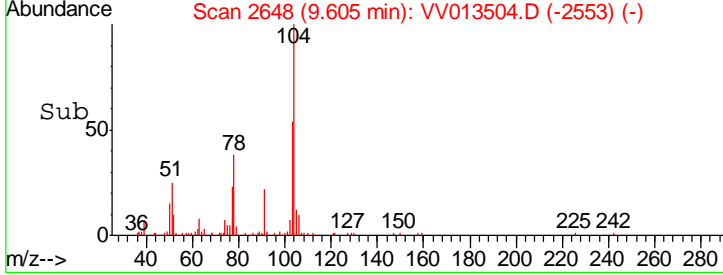
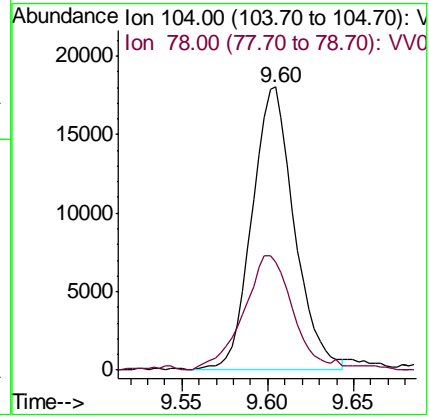
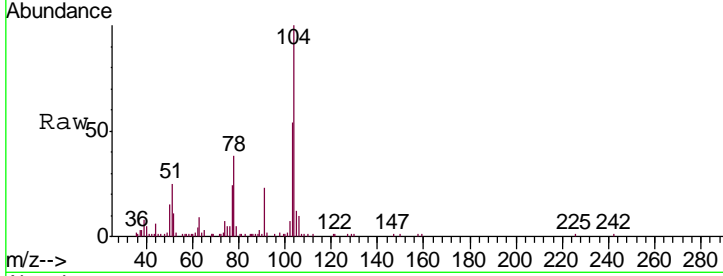




#55
 Styrene
 Concen: 1.842 ug/L
 RT: 9.60 min Scan# 2648
 Delta R.T. 0.01 min
 Lab File: VV013504.D
 Acq: 06 Nov 2019 17:34

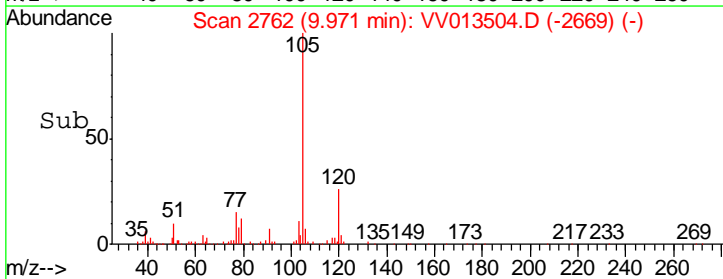
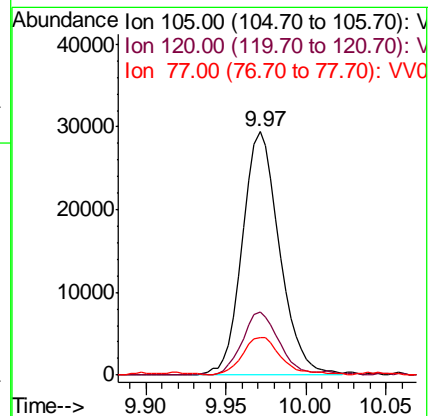
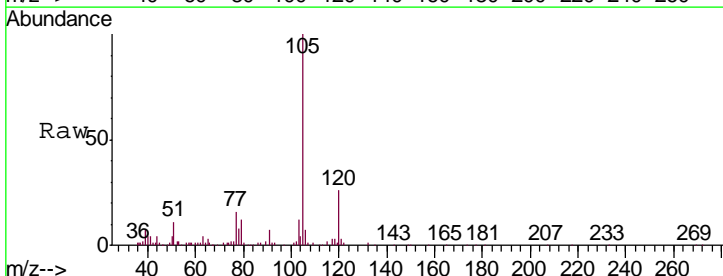
Instrument : MSVOA_V
 ClientSampled : MDL07

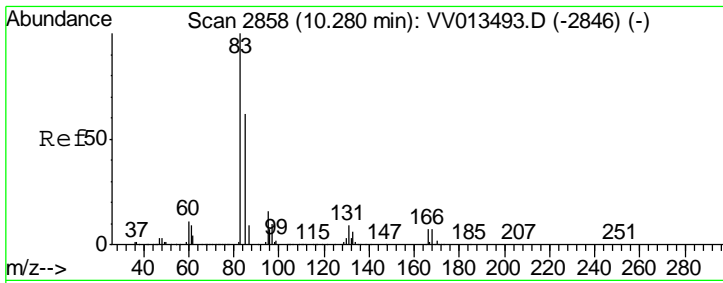
Tgt Ion	Resp	Lower	Upper
104	100		
78	38.3	30.9	57.3



#56
 Isopropylbenzene
 Concen: 1.827 ug/L
 RT: 9.97 min Scan# 2762
 Delta R.T. 0.00 min
 Lab File: VV013504.D
 Acq: 06 Nov 2019 17:34

Tgt Ion	Resp	Lower	Upper
105	100		
120	25.7	21.1	31.7
77	16.1	12.2	18.4

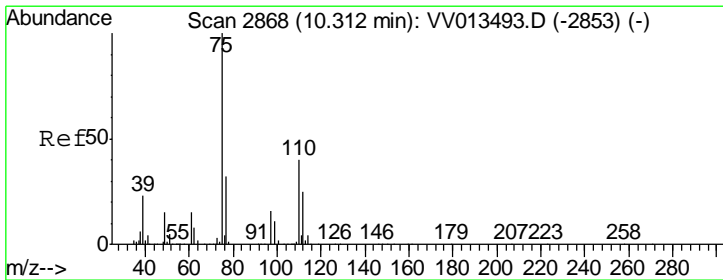
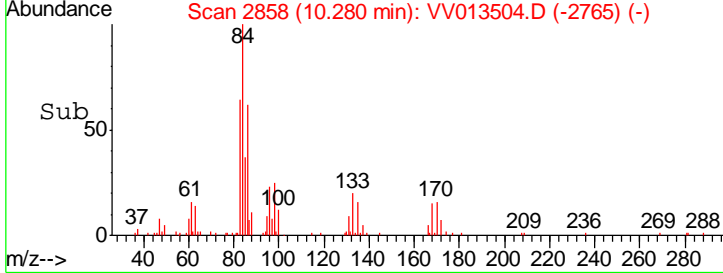
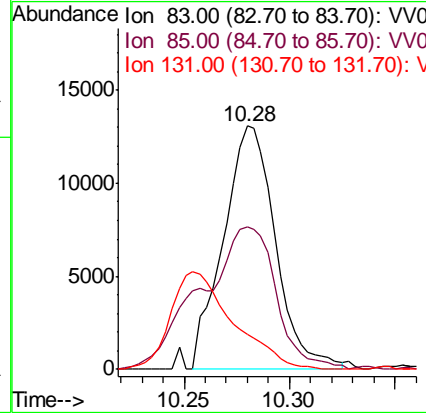
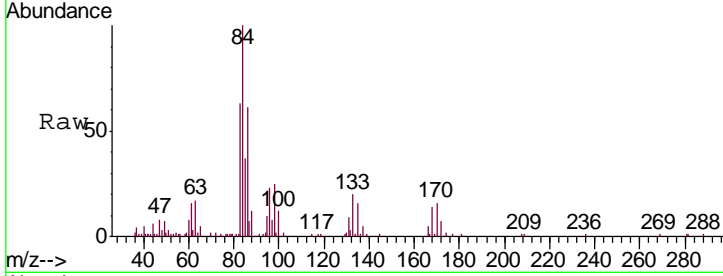




#58
 1,1,2,2-Tetrachloroethane
 Concen: 2.564 ug/L
 RT: 10.28 min Scan# 2858
 Delta R.T. 0.00 min
 Lab File: VV013504.D
 Acq: 06 Nov 2019 17:34

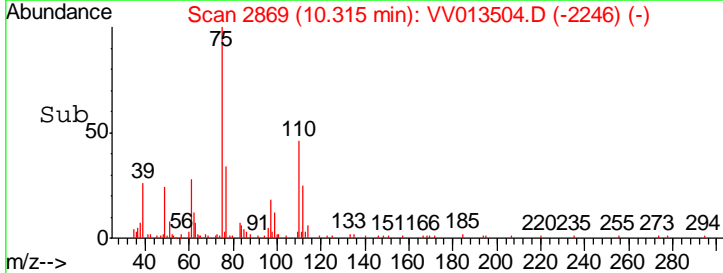
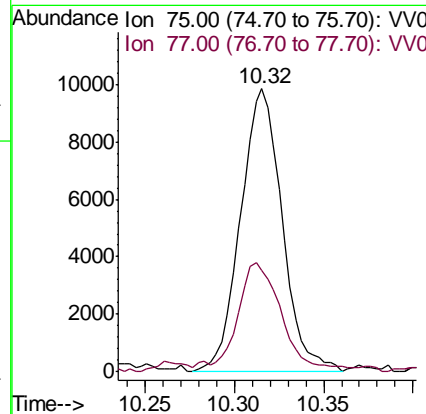
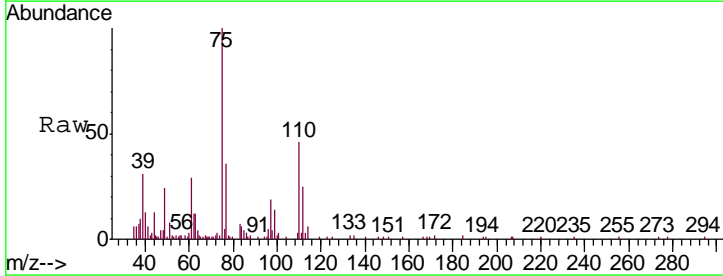
Instrument : MSVOA_V
 ClientSampled : MDL07

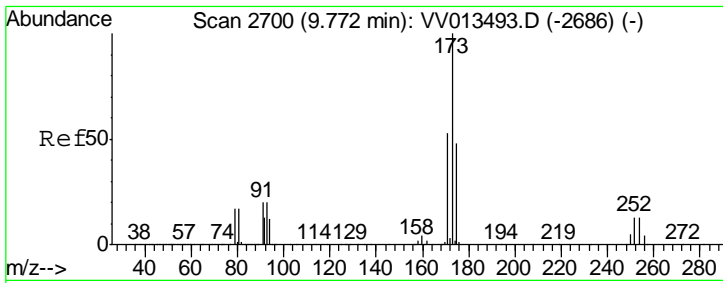
Tgt Ion	Resp	Lower	Upper
83	100		
85	58.7	44.0	81.6
131	14.2	7.7	11.5#



#59
 1,2,3-Trichloropropane
 Concen: 2.192 ug/L
 RT: 10.32 min Scan# 2869
 Delta R.T. 0.00 min
 Lab File: VV013504.D
 Acq: 06 Nov 2019 17:34

Tgt Ion	Resp	Lower	Upper
75	100		
77	35.5	25.4	38.2

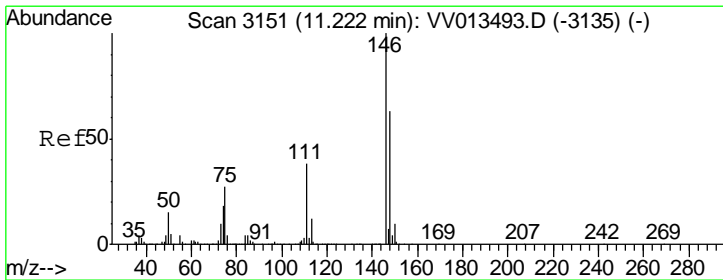
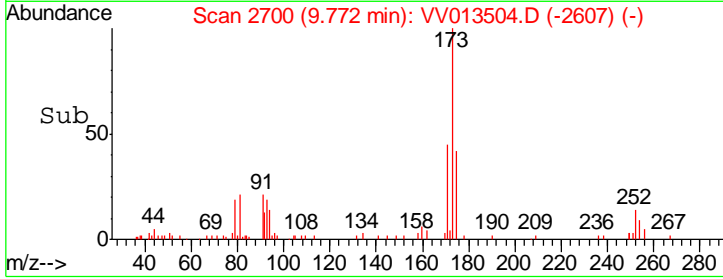
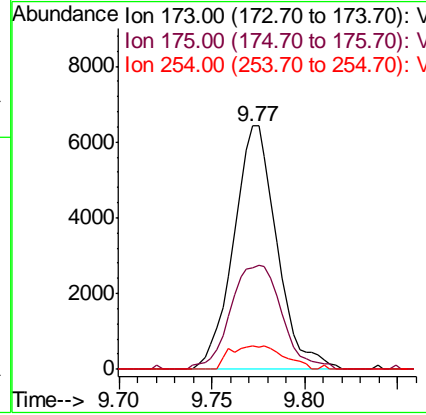
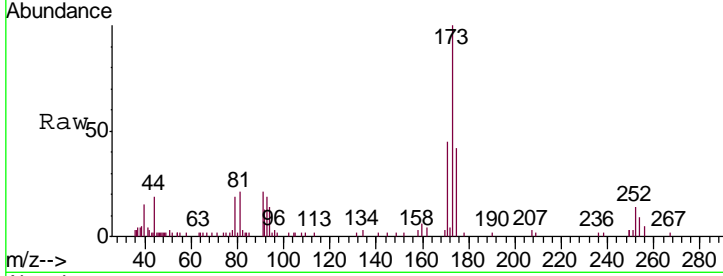




#61
 Bromoform
 Concen: 2.304 ug/L
 RT: 9.77 min Scan# 2700
 Delta R.T. 0.00 min
 Lab File: VV013504.D
 Acq: 06 Nov 2019 17:34

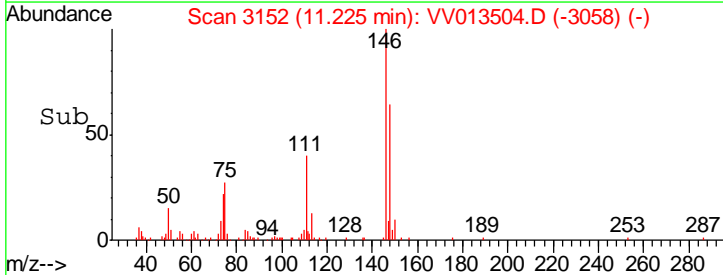
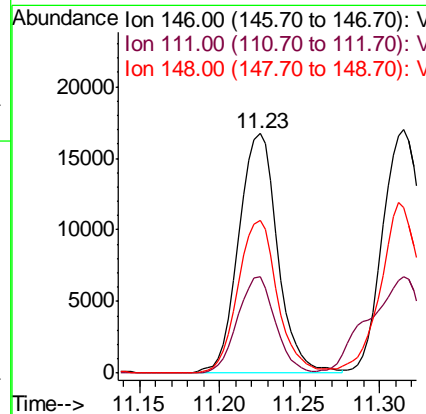
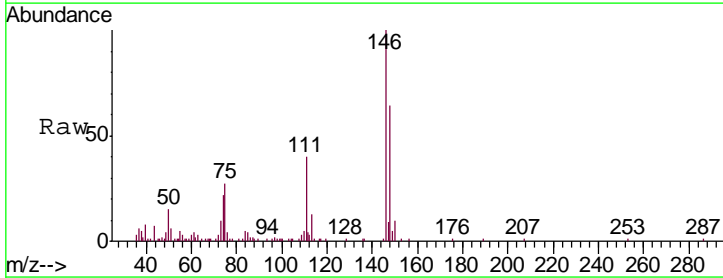
Instrument :
 MSVOA_V
 ClientSampled :
 MDL07

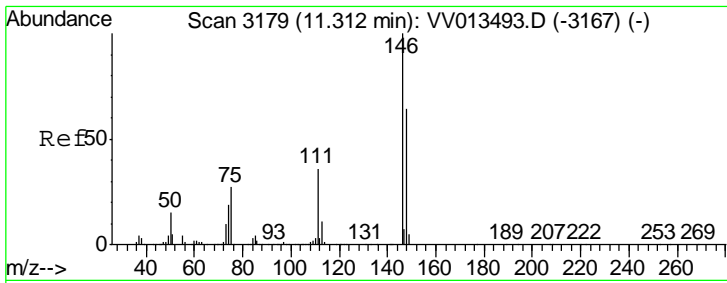
Tgt Ion	Resp	Lower	Upper
173	10426		
175	50.8	39.0	58.4
254	1.8	10.2	15.2#



#62
 1,3-Dichlorobenzene
 Concen: 2.370 ug/L
 RT: 11.23 min Scan# 3152
 Delta R.T. 0.00 min
 Lab File: VV013504.D
 Acq: 06 Nov 2019 17:34

Tgt Ion	Resp	Lower	Upper
146	27720		
111	40.5	26.4	49.0
148	63.7	44.4	82.4

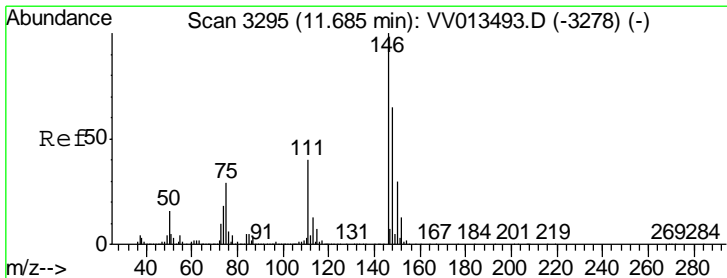
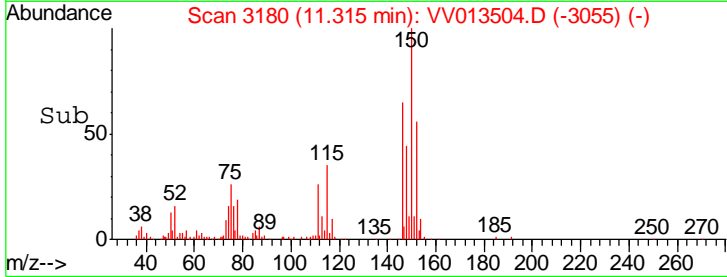
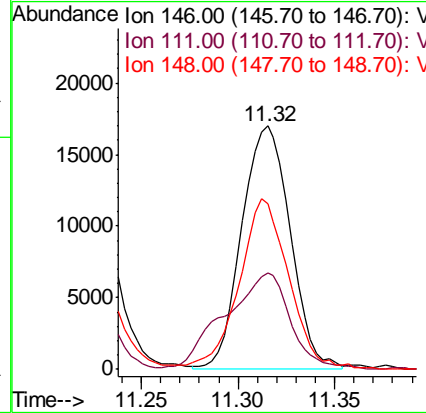
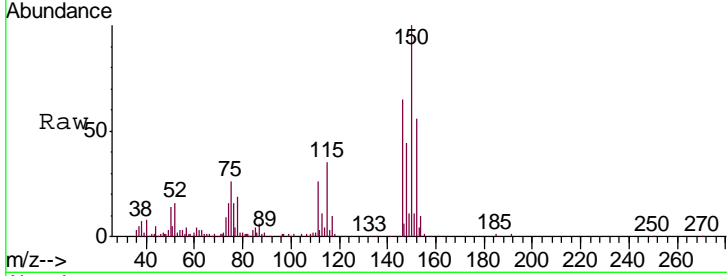




#63
 1,4-Dichlorobenzene
 Concen: 2.458 ug/L
 RT: 11.32 min Scan# 3180
 Delta R.T. 0.00 min
 Lab File: VV013504.D
 Acq: 06 Nov 2019 17:34

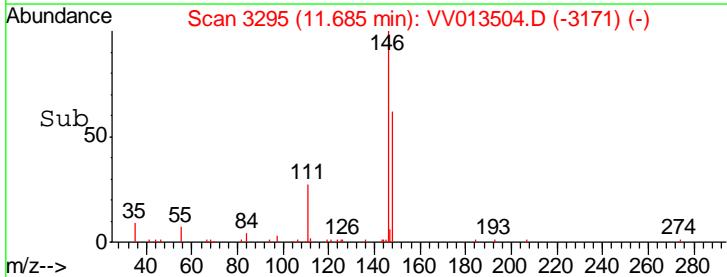
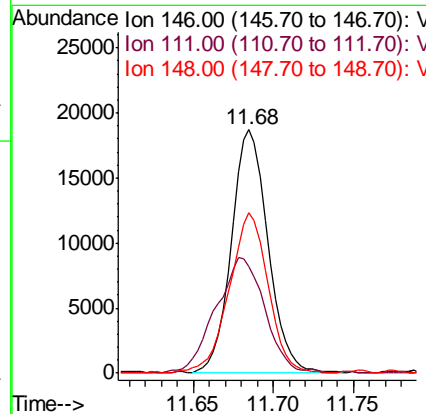
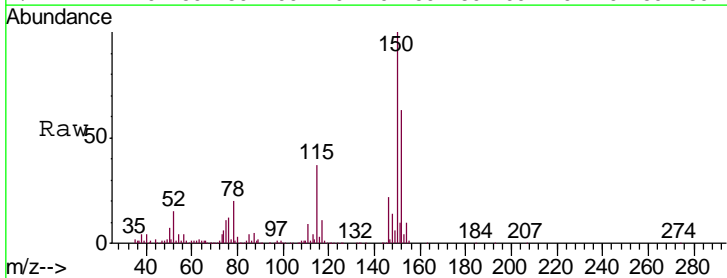
Instrument :
 MSVOA_V
 ClientSampled :
 MDL07

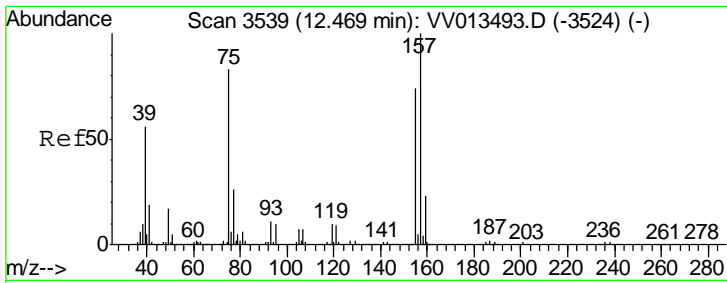
Tgt Ion	Resp	Lower	Upper
146	100		
111	39.5	25.5	47.3
148	67.9	44.9	83.5



#65
 1,2-Dichlorobenzene
 Concen: 2.494 ug/L
 RT: 11.68 min Scan# 3295
 Delta R.T. 0.00 min
 Lab File: VV013504.D
 Acq: 06 Nov 2019 17:34

Tgt Ion	Resp	Lower	Upper
146	100		
111	43.6	32.1	48.1
148	65.9	52.0	78.0

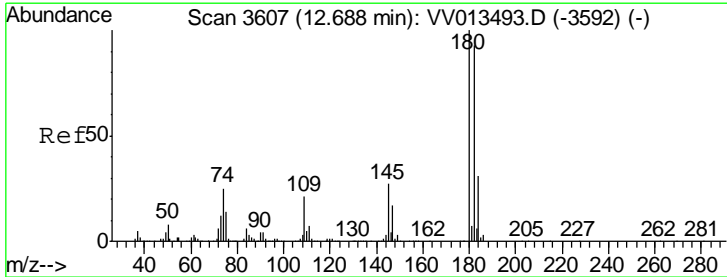
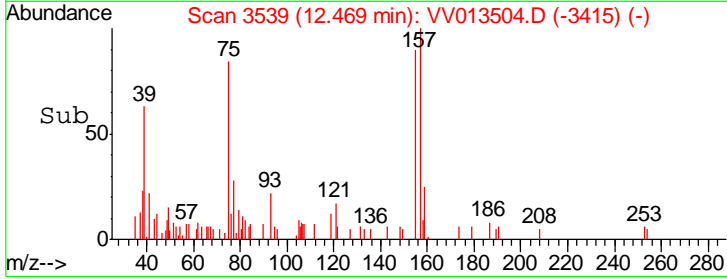
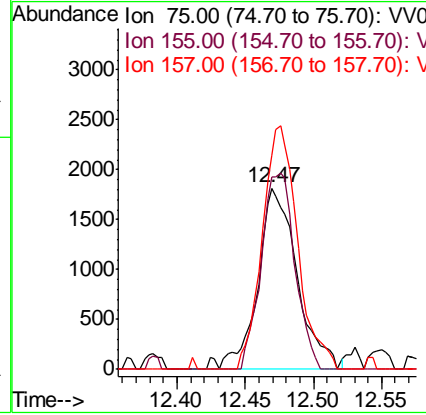
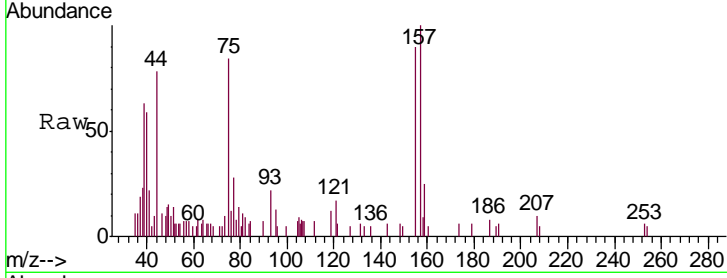




#66
 1,2-Dibromo-3-chloropropane
 Concen: 2.270 ug/L
 RT: 12.47 min Scan# 3539
 Delta R.T. 0.00 min
 Lab File: VV013504.D
 Acq: 06 Nov 2019 17:34

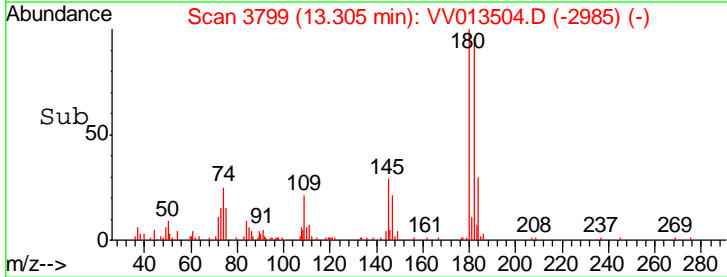
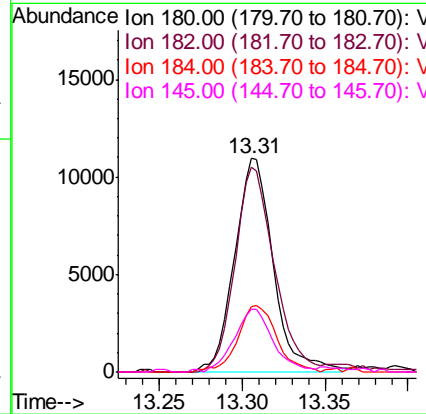
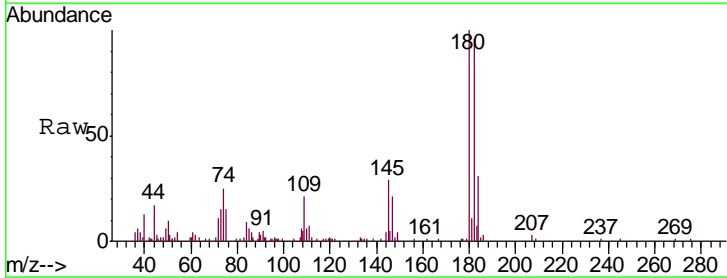
Instrument : MSVOA_V
 ClientSampled : MDL07

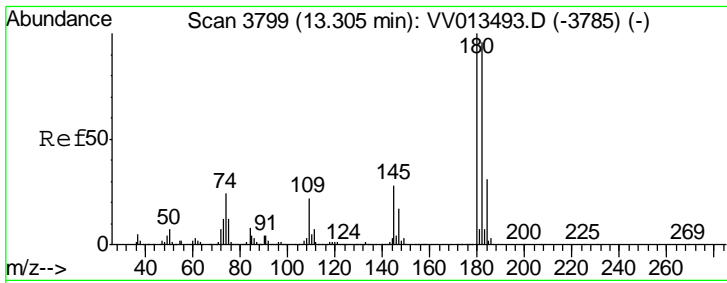
Tgt Ion	Resp	Lower	Upper
75	3669		
75	100		
155	106.6	71.9	107.9
157	118.4	96.6	145.0



#67
 1,3,5-Trichlorobenzene
 Concen: 1.944 ug/L
 RT: 13.31 min Scan# 3799
 Delta R.T. 0.62 min
 Lab File: VV013504.D
 Acq: 06 Nov 2019 17:34

Tgt Ion	Resp	Lower	Upper
180	17771		
180	100		
182	97.2	76.2	114.2
184	31.3	24.3	36.5
145	29.5	21.2	31.8

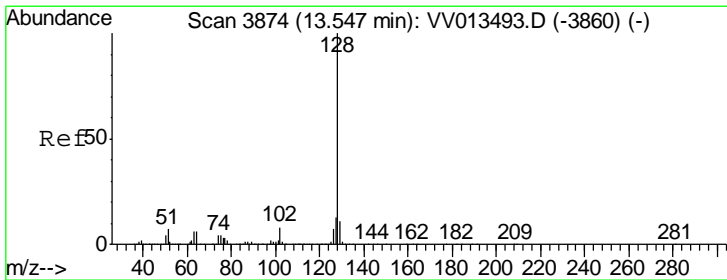
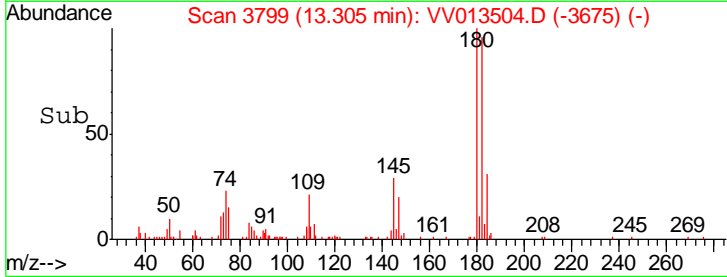
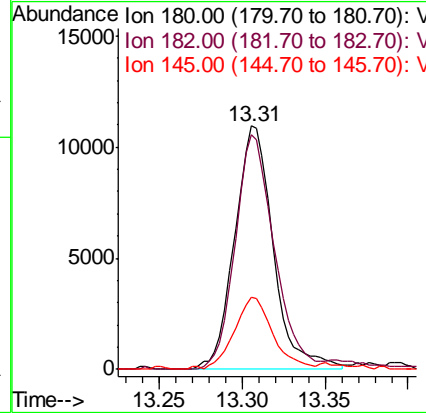
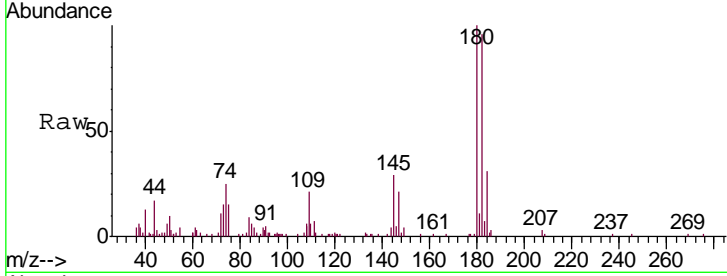




#68
 1,2,4-trichlorobenzene
 Concen: 2.219 ug/L
 RT: 13.31 min Scan# 3799
 Delta R.T. 0.00 min
 Lab File: VV013504.D
 Acq: 06 Nov 2019 17:34

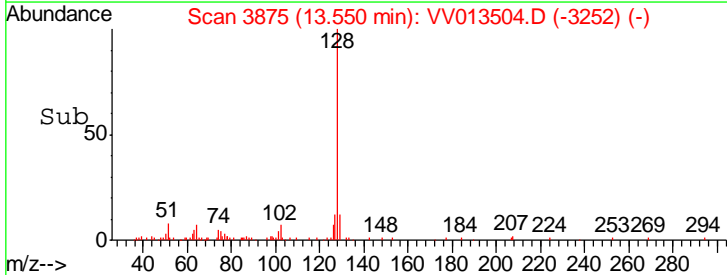
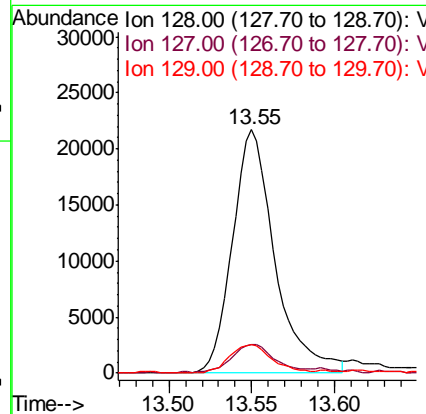
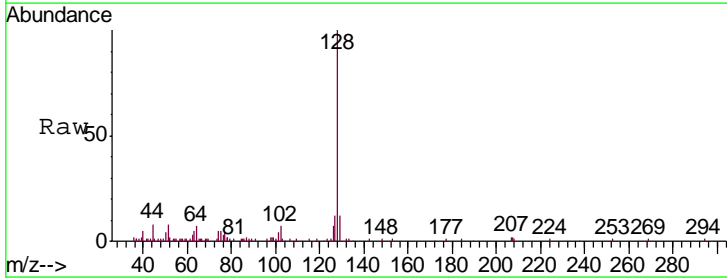
Instrument :
 MSVOA_V
 ClientSampled :
 MDL07

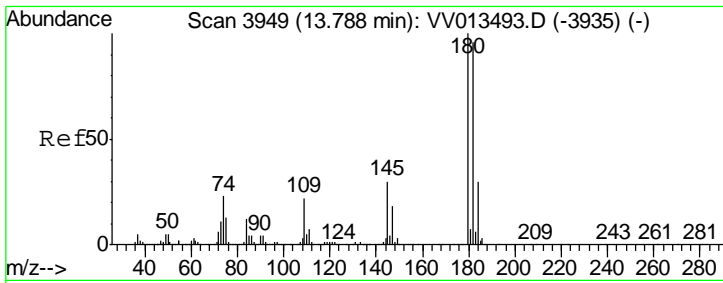
Tgt Ion	Resp	Lower	Upper
180	17771		
182	97.2	76.4	114.6
145	29.5	22.4	33.6



#69
 Naphthalene
 Concen: 1.814 ug/L
 RT: 13.55 min Scan# 3875
 Delta R.T. 0.00 min
 Lab File: VV013504.D
 Acq: 06 Nov 2019 17:34

Tgt Ion	Resp	Lower	Upper
128	38810		
127	11.9	10.6	15.8
129	11.8	8.6	13.0



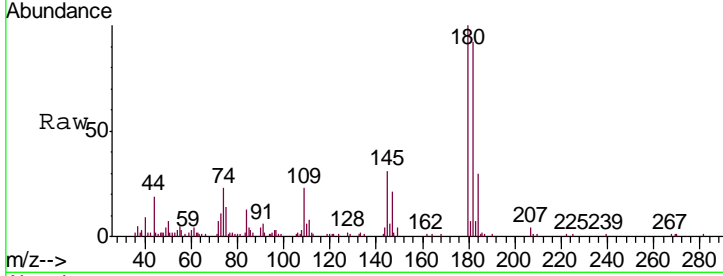


#70
 1,2,3-Trichlorobenzene
 Concen: 2.154 ug/L
 RT: 13.79 min Scan# 3950
 Delta R.T. 0.00 min
 Lab File: VV013504.D
 Acq: 06 Nov 2019 17:34

Instrument :
 MSVOA_V
 ClientSampled :
 MDL07

Tgt Ion:180 Resp: 18320

Ion	Ratio	Lower	Upper
180	100		
182	92.8	77.4	116.0
145	29.5	24.0	36.0



Abundance Ion 180.00 (179.70 to 180.70): V
 15000 Ion 182.00 (181.70 to 182.70): V
 Ion 145.00 (144.70 to 145.70): V

