

Data Path : Z:\voasrv\HPCHEM1\MSVOA\_V\DATA\VV110624\  
 Data File : VV037942.D  
 Acq On : 06 Nov 2024 20:47  
 Operator : SY/MD  
 Sample : VI BLK  
 Misc : 25mL/MSVOA\_V/WATER  
 ALS Vial : 25 Sample Multiplier: 1

Instrument :  
 MSVOA\_V  
 ClientSampleId :

Quant Time: Nov 06 22:49:34 2024  
 Quant Method : Z:\voasrv\HPCHEM1\MSVOA\_V\Method\SFAMVTR110624WMA.M  
 Quant Title : TRACE VOA SFAM1.0  
 QLast Update : Wed Nov 06 22:44:19 2024  
 Response via : Initial Calibration

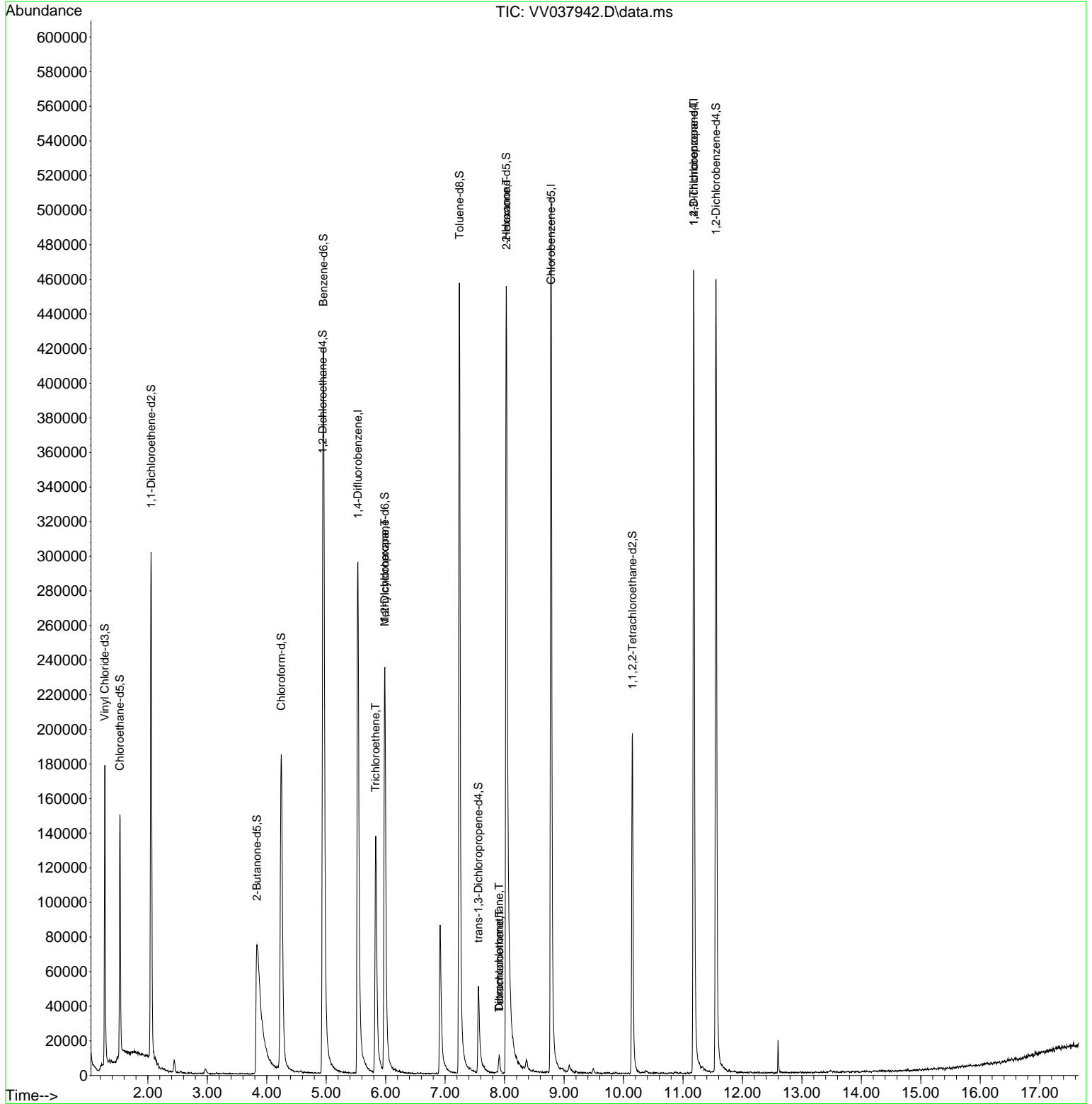
Compound	R.T.	QI on	Response	Conc	Units	Dev(Min)
<b>Internal Standards</b>						
1) 1,4-Difluorobenzene	5.532	114	290476	5.000	ug/L	0.00
28) Chlorobenzene-d5	8.780	117	301689	5.000	ug/L	0.00
58) 1,4-Dichlorobenzene-d4	11.181	152	133673	5.000	ug/L	0.00
<b>System Monitoring Compounds</b>						
4) Vinyl Chloride-d3	1.275	65	110245	4.958	ug/L	0.00
Spike Amount	5.000	Range	40 - 130	Recovery	=	99.200%
7) Chloroethane-d5	1.529	69	92312	5.094	ug/L	0.00
Spike Amount	5.000	Range	65 - 130	Recovery	=	101.800%
11) 1,1-Dichloroethene-d2	2.053	65	48397	5.016	ug/L	0.00
Spike Amount	5.000	Range	60 - 125	Recovery	=	100.400%
20) 2-Butanone-d5	3.834	46	230281	55.570	ug/L	0.03
Spike Amount	50.000	Range	40 - 130	Recovery	=	111.140%
24) Chloroform-d	4.243	84	211959	5.230	ug/L	0.00
Spike Amount	5.000	Range	70 - 125	Recovery	=	104.600%
26) 1,2-Dichloroethane-d4	4.941	65	103201	5.698	ug/L	0.00
Spike Amount	5.000	Range	70 - 130	Recovery	=	114.000%
32) Benzene-d6	4.953	84	401297	5.158	ug/L	0.00
Spike Amount	5.000	Range	70 - 125	Recovery	=	103.200%
36) 1,2-Dichloropropane-d6	5.986	67	123245	5.424	ug/L	0.00
Spike Amount	5.000	Range	60 - 140	Recovery	=	108.400%
41) Toluene-d8	7.239	98	335236	4.794	ug/L	0.00
Spike Amount	5.000	Range	70 - 130	Recovery	=	95.800%
43) trans-1,3-Dichloropropene	7.558	79	38284	4.358	ug/L	0.00
Spike Amount	5.000	Range	55 - 130	Recovery	=	87.200%
46) 2-Hexanone-d5	8.027	63	207531	60.788	ug/L	0.00
Spike Amount	50.000	Range	45 - 130	Recovery	=	121.580%
56) 1,1,2,2-Tetrachloroethene	10.149	84	105470	5.758	ug/L	0.00
Spike Amount	5.000	Range	65 - 120	Recovery	=	115.200%
66) 1,2-Dichlorobenzene-d4	11.554	152	131109	5.947	ug/L	0.00
Spike Amount	5.000	Range	80 - 120	Recovery	=	119.000%
<b>Target Compounds</b>						
34) Trichloroethene	5.831	95	56764	2.473	ug/L	99
35) Methylcyclohexane	5.982	83	30469	0.890	ug/L #	20
47) Tetrachloroethene	7.911	164	2729	0.153	ug/L	92
48) 2-Hexanone	8.030	43	21266	2.883	ug/L #	74
49) Dibromochloromethane	7.908	129	2402	0.134	ug/L #	12
61) 1,2,3-Trichloropropane	11.181	75	15843	1.516	ug/L #	59

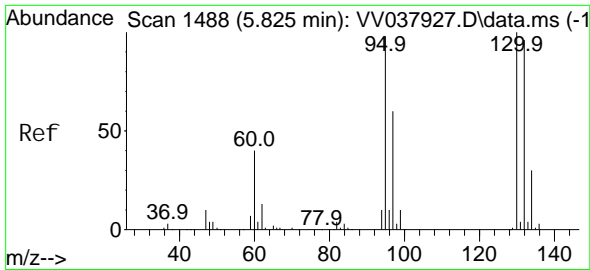
(#) = qualifier out of range (m) = manual integration (+) = signals summed

Data Path : Z:\voasrv\HPCHEM1\MSVOA\_V\DATA\VV110624\  
 Data File : VV037942.D  
 Acq On : 06 Nov 2024 20:47  
 Operator : SY/MD  
 Sample : VIBLK  
 Misc : 25mL/MSVOA\_V/WATER  
 ALS Vial : 25 Sample Multiplier: 1

Instrument :  
 MSVOA\_V  
 ClientSampleId :

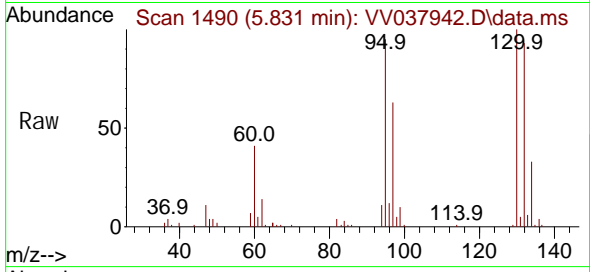
Quant Time: Nov 06 22:49:34 2024  
 Quant Method : Z:\voasrv\HPCHEM1\MSVOA\_V\Method\SFAMVTR110624WMA.M  
 Quant Title : TRACE VOA SFAM1.0  
 QLast Update : Wed Nov 06 22:44:19 2024  
 Response via : Initial Calibration



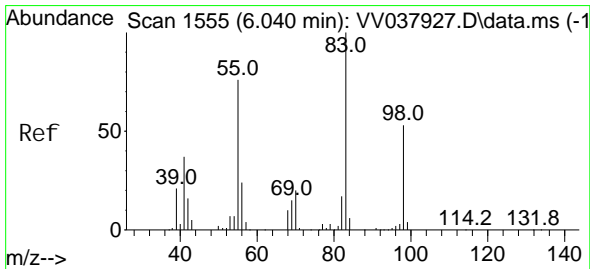
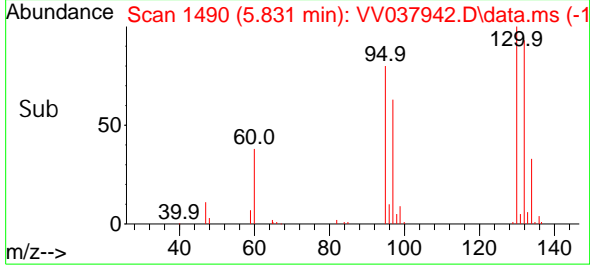
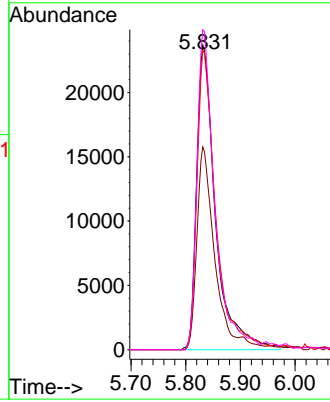


#34  
 Trichloroethene  
 Concen: 2.473 ug/L  
 RT: 5.831 min Scan# 1488  
 Delta R.T. 0.006 min  
 Lab File: VV037942.D  
 Acq: 06 Nov 2024 20:47

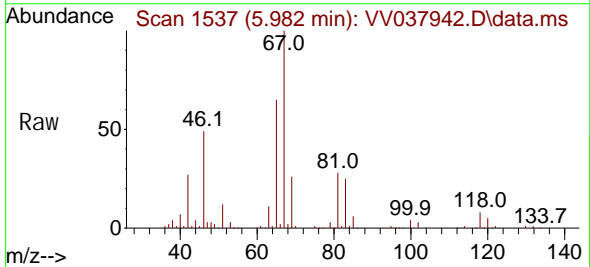
Instrument : MSVOA\_V  
 ClientSampleId :



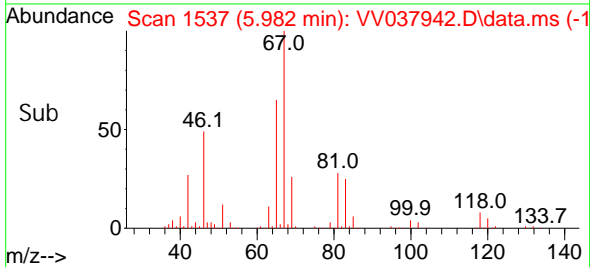
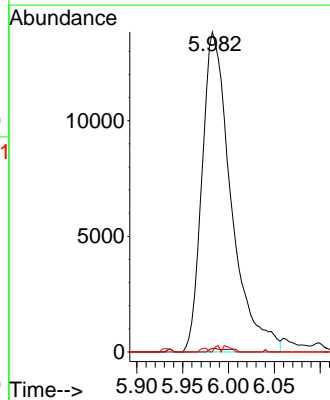
Tgt Ion: 95 Resp: 56764  
 Ion Ratio Lower Upper  
 95 100  
 97 66.6 46.9 87.1  
 132 98.2 70.5 130.9  
 130 105.1 72.9 135.3

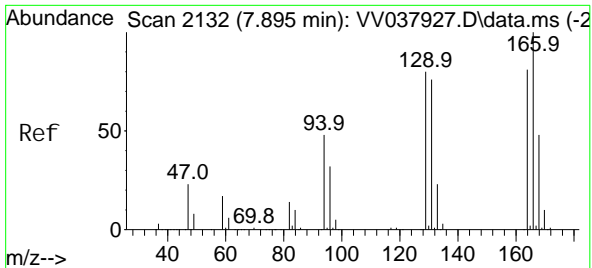


#35  
 Methyl cycl ohexane  
 Concen: 0.890 ug/L  
 RT: 5.982 min Scan# 1537  
 Delta R.T. -0.058 min  
 Lab File: VV037942.D  
 Acq: 06 Nov 2024 20:47



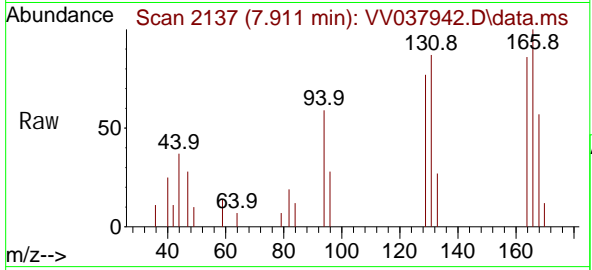
Tgt Ion: 83 Resp: 30469  
 Ion Ratio Lower Upper  
 83 100  
 55 0.5 59.3 88.9#  
 98 0.5 38.3 57.5#





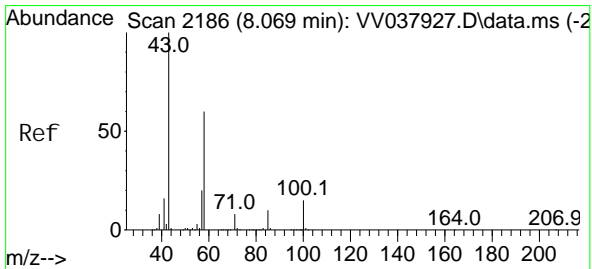
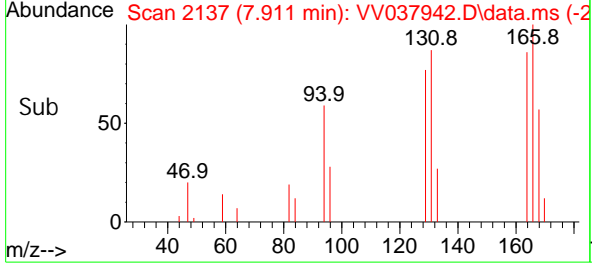
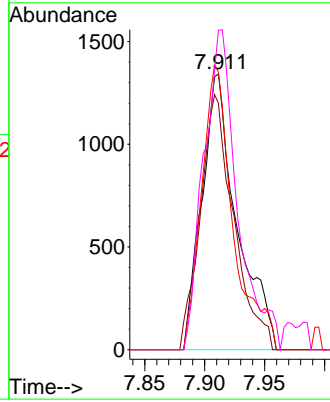
#47  
 Tetrachloroethene  
 Concen: 0.153 ug/L  
 RT: 7.911 min Scan# 2137  
 Delta R.T. 0.016 min  
 Lab File: VV037942.D  
 Acq: 06 Nov 2024 20: 47

Instrument :  
 MSVOA\_V  
 ClientSampleId :

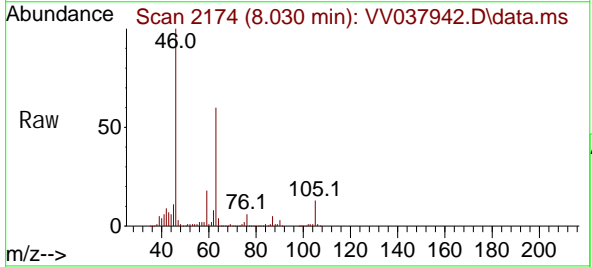


Tgt Ion: 164 Resp: 2729

Ion	Ratio	Lower	Upper
164	100		
129	89.3	66.8	124.2
131	100.7	65.2	121.2
166	115.9	89.2	165.8

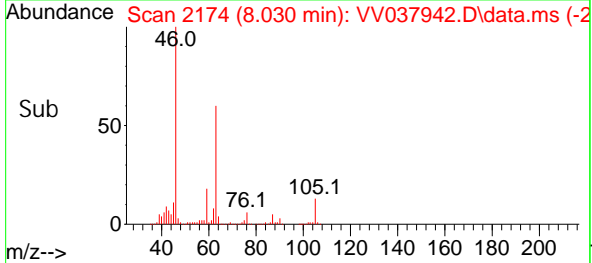
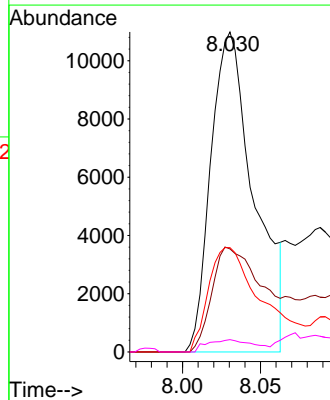


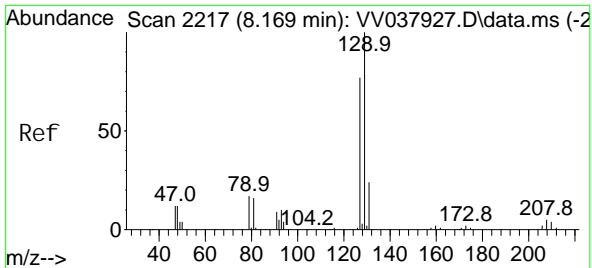
#48  
 2-Hexanone  
 Concen: 2.883 ug/L  
 RT: 8.030 min Scan# 2174  
 Delta R.T. -0.039 min  
 Lab File: VV037942.D  
 Acq: 06 Nov 2024 20: 47



Tgt Ion: 43 Resp: 21266

Ion	Ratio	Lower	Upper
43	100		
58	44.9	48.5	72.7#
57	41.0	16.3	24.5#
100	4.2	11.3	16.9#

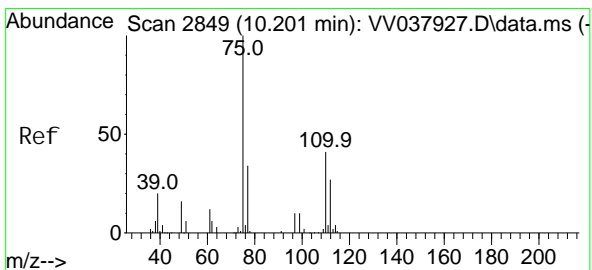
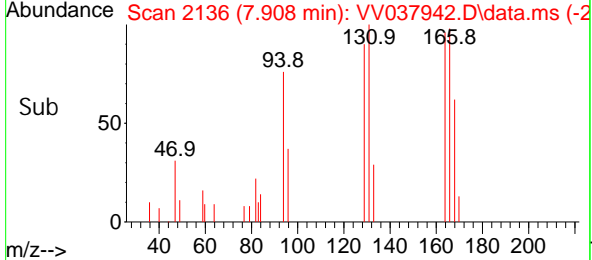
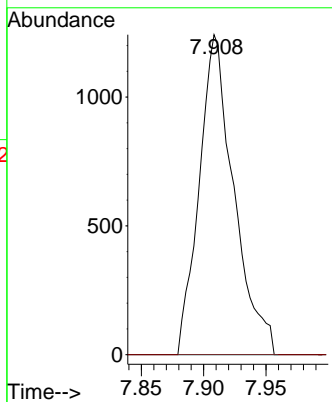
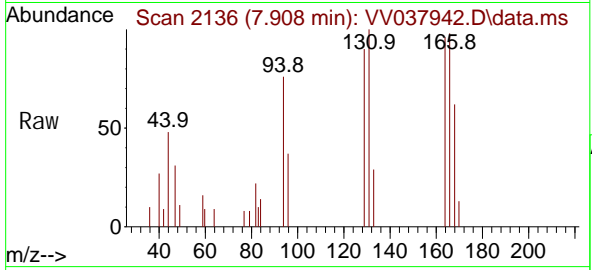




#49  
 Di bromochloromethane  
 Concen: 0.134 ug/L  
 RT: 7.908 min Scan# 2136  
 Delta R.T. -0.260 min  
 Lab File: VV037942.D  
 Acq: 06 Nov 2024 20:47

Instrument : MSVOA\_V  
 ClientSampleId :

Tgt Ion: 129 Resp: 2402  
 Ion Ratio Lower Upper  
 129 100  
 127 0.0 52.2 97.0#



#61  
 1,2,3-Tri chloropropane  
 Concen: 1.516 ug/L  
 RT: 11.181 min Scan# 3154  
 Delta R.T. 0.981 min  
 Lab File: VV037942.D  
 Acq: 06 Nov 2024 20:47

Tgt Ion: 75 Resp: 15843  
 Ion Ratio Lower Upper  
 75 100  
 77 37.3 24.9 37.3#  
 110 2.4 33.5 50.3#

