

Data Path : Z:\VOASRV\HPCHEM1\MSVOA V\DATA\VV110720\
 Data File : VV0192278.D
 Acq On : 05 Nov 2020 15:07
 Operator : SY/MD
 Sample : L4615-11ME
 Misc : 6.02µ/5.0mL/100uL/5.0mL/MSVOA_V/MEOH
 ALS Vial : 1 Sample Multiplier: 1

Instrument :
 MSVOA_V
 ClientSampleId :

Quant Time: Nov 05 22:40:44 2020
 Quant Method : Z:\VOASRV\HPCHEM1\MSVOA_V\METHOD\SOMVLM102920WMA.M
 Quant Title : VOC Analysis
 QLast Update : Thu Nov 05 22:32:19 2020
 Response via : Initial Calibration

Internal Standards	R.T.	QIon	Response	Conc	Units	Dev(Min)
1) 1,4-Difluorobenzene	5.64	114	256743	50.00	µg/L	0.00
28) Chlorobenzene-d5	8.87	117	258956	50.00	µg/L	0.00
60) 1,4-Dichlorobenzene-d4	11.28	152	127123	50.00	µg/L	0.00

System Monitoring Compounds

4) Vinyl Chloride-d3	1.32	65	92588	45.38	µg/L	0.00
Spiked Amount	50.000	Range	60 - 135	Recovery	=	90.76%
7) Chloroethane-d5	1.58	69	74148	46.78	µg/L	0.00
Spiked Amount	50.000	Range	70 - 130	Recovery	=	93.56%
11) 1,1-Dichloroethene-d2	2.10	63	144395	37.20	µg/L	-0.02
Spiked Amount	50.000	Range	60 - 125	Recovery	=	74.40%
21) 2-Butanone-d5	3.94	46	104374	83.52	µg/L	0.04
Spiked Amount	100.000	Range	40 - 130	Recovery	=	83.52%
24) Chloroform-d	4.37	84	177330	46.72	µg/L	0.00
Spiked Amount	50.000	Range	70 - 125	Recovery	=	93.44%
26) 1,2-Dichloroethane-d4	5.05	65	130603	49.38	µg/L	0.00
Spiked Amount	50.000	Range	70 - 125	Recovery	=	98.76%
32) Benzene-d6	5.07	84	342133	46.57	µg/L	0.00
Spiked Amount	50.000	Range	70 - 125	Recovery	=	93.14%
36) 1,2-Dichloropropane-d6	6.09	67	109078	49.80	µg/L	0.00
Spiked Amount	50.000	Range	70 - 120	Recovery	=	99.60%
41) Toluene-d8	7.33	98	318166	45.09	µg/L	0.00
Spiked Amount	50.000	Range	80 - 120	Recovery	=	90.18%
43) trans-1,3-Dichloropropene-	7.64	79	56731	44.76	µg/L	0.00
Spiked Amount	50.000	Range	60 - 125	Recovery	=	89.52%
47) 2-Hexanone-d5	8.14	63	85336	89.96	µg/L	0.04
Spiked Amount	100.000	Range	45 - 130	Recovery	=	89.96%
57) 1,1,2,2-Tetrachloroethane-	10.25	84	130439	44.17	µg/L	0.01
Spiked Amount	50.000	Range	65 - 120	Recovery	=	88.34%
64) 1,2-Dichlorobenzene-d4	11.65	152	132195	49.50	µg/L	0.00
Spiked Amount	50.000	Range	80 - 120	Recovery	=	99.00%

Target Compounds

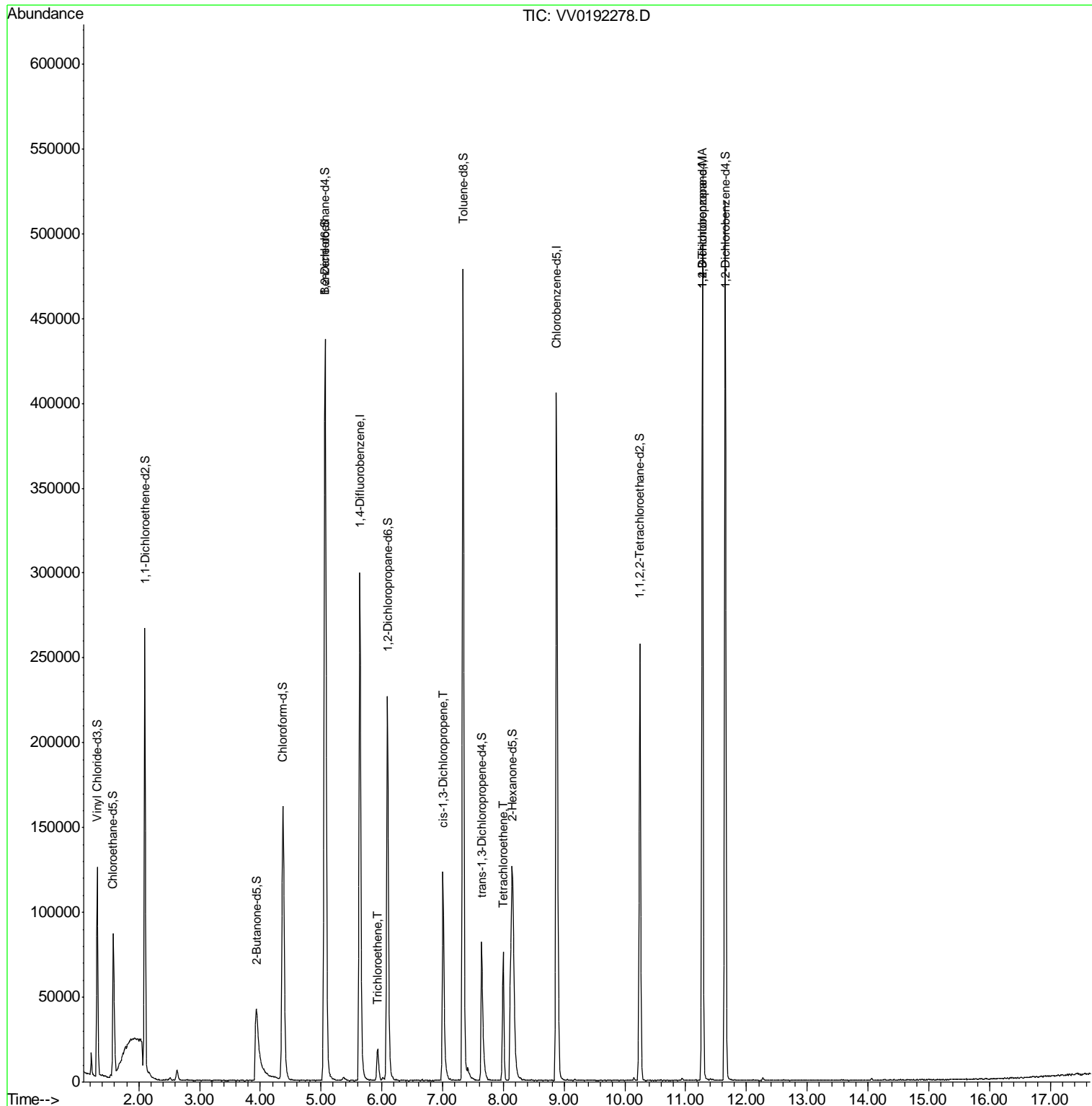
Target Compounds	R.T.	QIon	Response	Conc	Units	Ovalue
34) Trichloroethene	5.94	95	2417	1.182	µg/L	88
39) cis-1,3-Dichloropropene	7.01	75	3874	1.265	µg/L	90
46) Tetrachloroethene	8.00	164	17607	10.081	µg/L	98
59) 1,2,3-Trichloropropane	11.28	75	14105	5.819	µg/L #	86

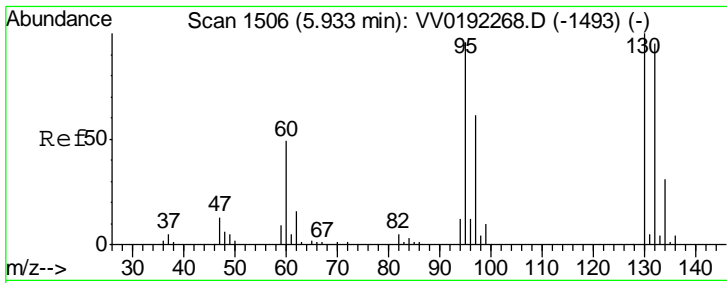
(#) = qualifier out of range (m) = manual integration (+) = signals summed

Data Path : Z:\VOASRV\HPCHEM1\MSVOA V\DATA\VV110720\
 Data File : VV0192278.D
 Acq On : 05 Nov 2020 15:07
 Operator : SY/MD
 Sample : L4615-11ME
 Misc : 6.02µ/5.0mL/100uL/5.0mL/MSVOA_V/MEOH
 ALS Vial : 1 Sample Multiplier: 1

Instrument :
 MSVOA_V
 ClientSampled :

Quant Time: Nov 05 22:40:44 2020
 Quant Method : Z:\VOASRV\HPCHEM1\MSVOA_V\METHOD\SOMVLM102920WMA.M
 Quant Title : VOC Analysis
 QLast Update : Thu Nov 05 22:32:19 2020
 Response via : Initial Calibration

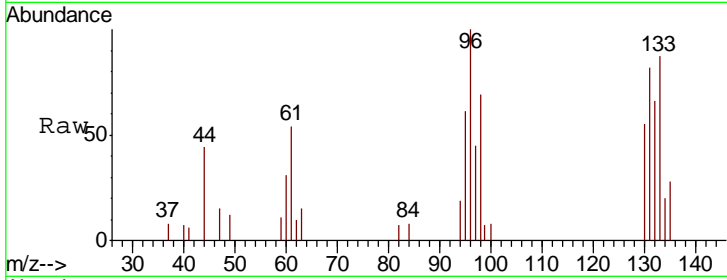




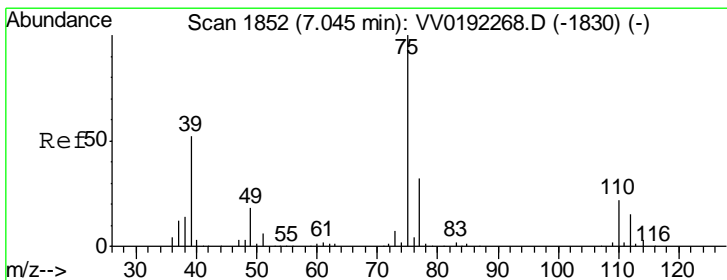
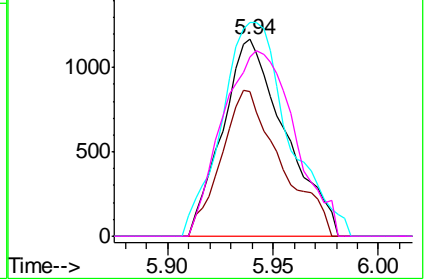
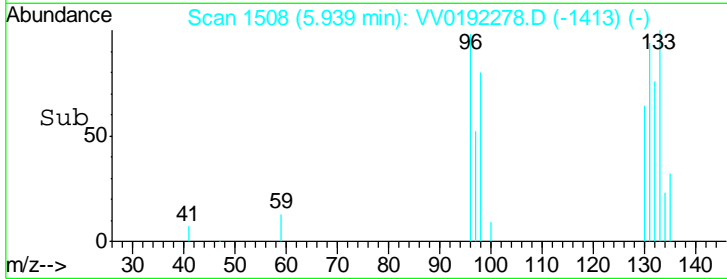
#34
 Trichloroethene
 Concen: 1.182 ug/L
 RT: 5.94 min Scan# 1508
 Delta R.T. 0.01 min
 Lab File: VV0192278.D
 Acq: 05 Nov 2020 15:07

Instrument : MSVOA_V
 ClientSampled :

Tgt Ion	Resp	Lower	Upper
95	2417		
97	73.8	43.4	80.6
132	108.4	69.7	129.4
130	91.3	72.4	134.5

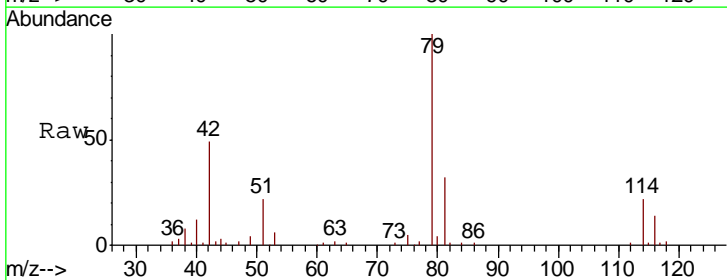


Abundance Ion 95.00 (94.70 to 95.70): VV0
 Ion 97.00 (96.70 to 97.70): VV0
 Ion 132.00 (131.70 to 132.70): VV0
 Ion 130.00 (129.70 to 130.70): VV0

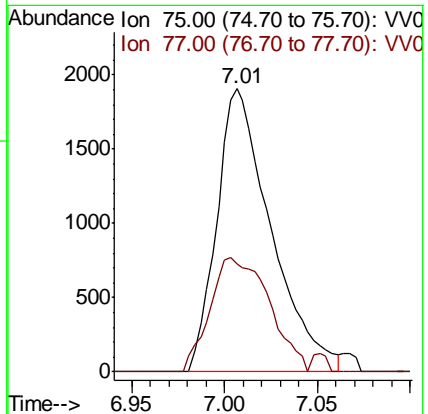
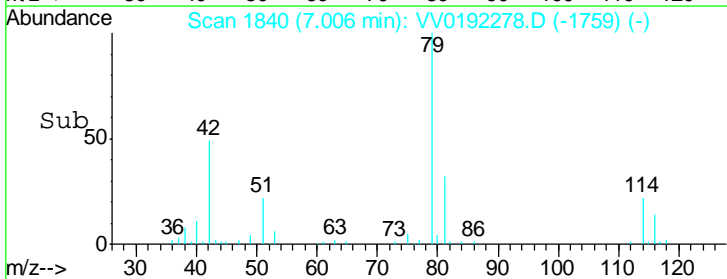


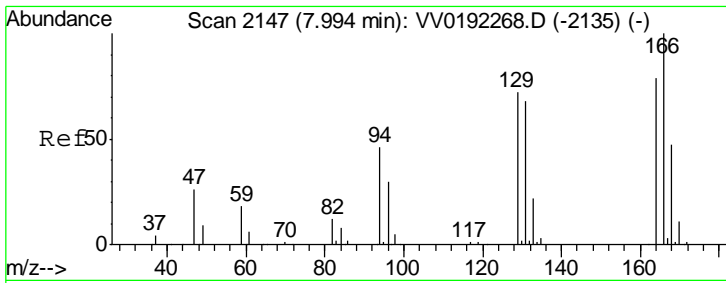
#39
 cis-1,3-Dichloropropene
 Concen: 1.265 ug/L
 RT: 7.01 min Scan# 1840
 Delta R.T. -0.04 min
 Lab File: VV0192278.D
 Acq: 05 Nov 2020 15:07

Tgt Ion	Resp	Lower	Upper
75	3874		
77	38.2	22.7	42.1



Abundance Ion 75.00 (74.70 to 75.70): VV0
 Ion 77.00 (76.70 to 77.70): VV0

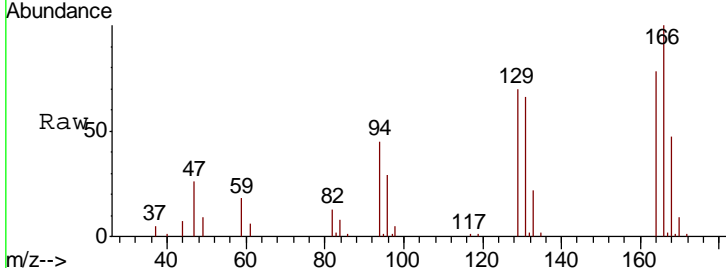




#46

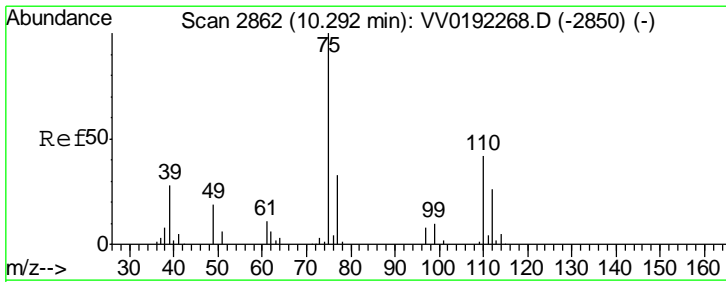
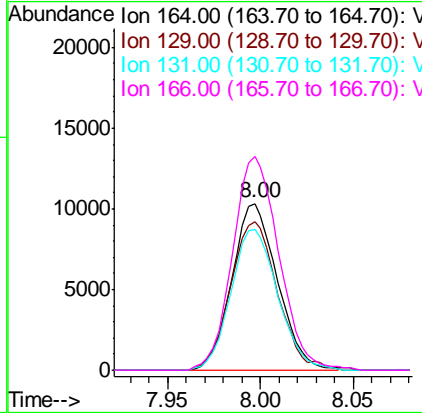
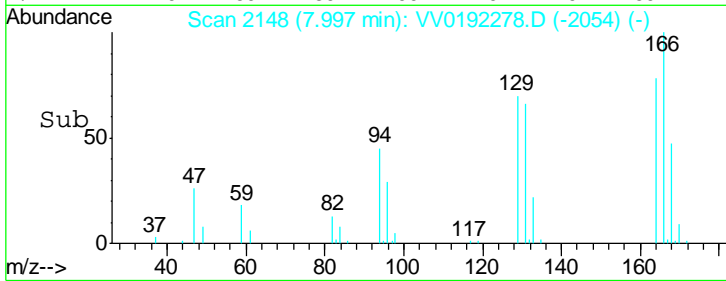
Tetrachloroethene
 Concen: 10.081 ug/L
 RT: 8.00 min Scan# 2148
 Delta R.T. 0.00 min
 Lab File: VV0192278.D
 Acq: 05 Nov 2020 15:07

Instrument :
 MSVOA_V
 ClientSampled :



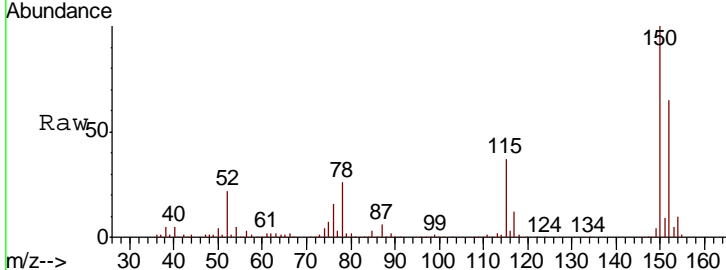
Tgt Ion: 164 Resp: 17607

Ion	Ratio	Lower	Upper
164	100		
129	89.2	63.2	117.4
131	84.6	60.3	112.1
166	128.2	88.3	163.9



#59

1,2,3-Trichloropropane
 Concen: 5.819 ug/L
 RT: 11.28 min Scan# 3168
 Delta R.T. 0.98 min
 Lab File: VV0192278.D
 Acq: 05 Nov 2020 15:07



Tgt Ion: 75 Resp: 14105

Ion	Ratio	Lower	Upper
75	100		
77	40.8	26.2	39.4

