

Data Path : Z:\voasrv\HPCHEM1\MSVOA\_V\Data\VW110821\  
 Data File : VV023277.D  
 Acq On : 08 Nov 2021 14:30  
 Operator : SY/MD  
 Sample : M4492-01  
 Misc : 25.0mL/MSVOA\_V/WATER  
 ALS Vial : 6 Sample Multiplier: 1

Instrument :  
 MSVOA\_V  
 ClientSampleId :

Quant Time: Nov 09 05:15:36 2021  
 Quant Method : Z:\voasrv\HPCHEM1\MSVOA\_V\Method\SFAMVTR110421WMA.M  
 Quant Title : TRACE VOA SFAM1.0  
 QLast Update : Tue Nov 09 05:13:22 2021  
 Response via : Initial Calibration

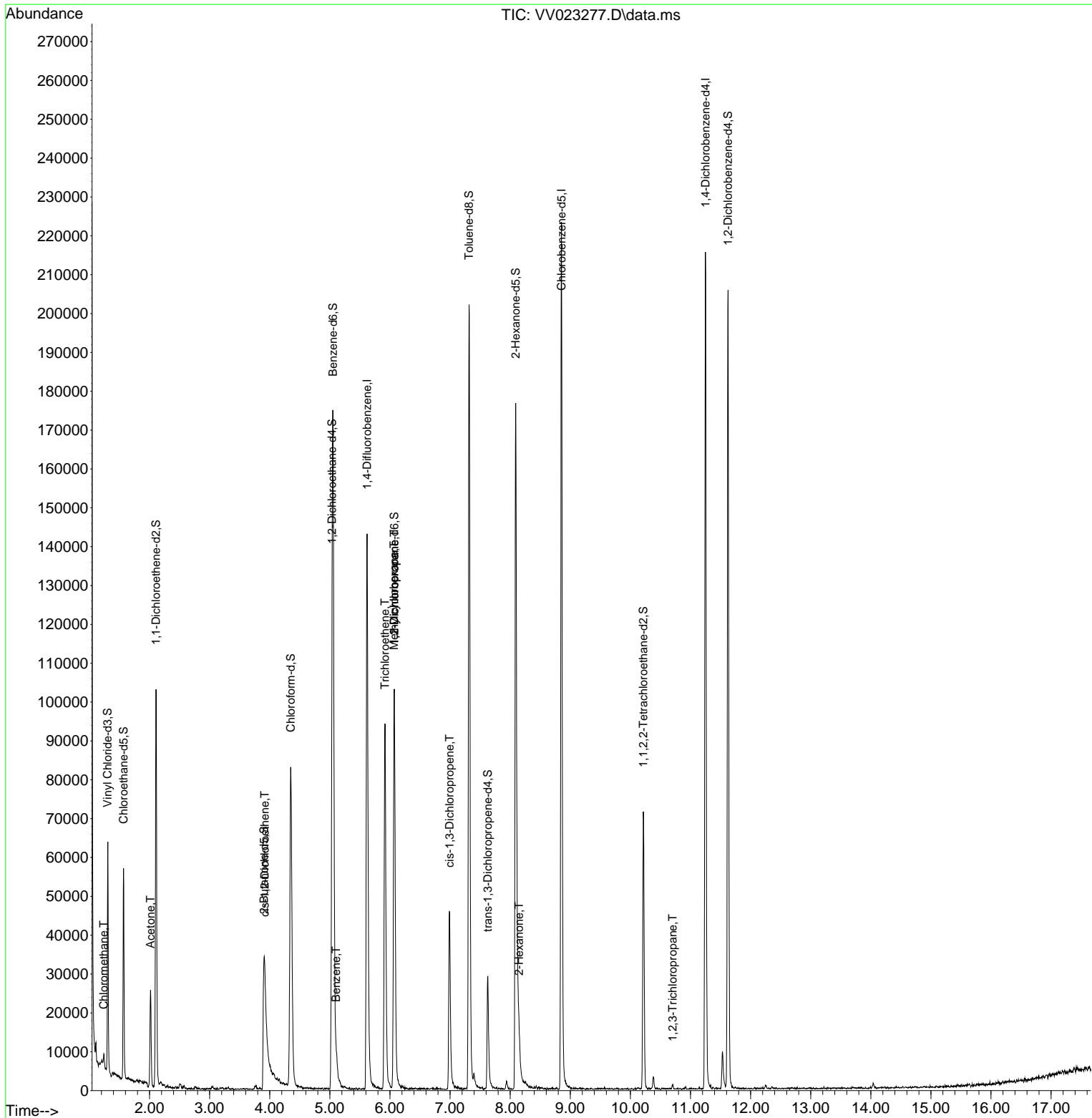
Compound	R.T.	QIon	Response	Conc	Units	Dev(Min)
-----						
Internal Standards						
1) 1,4-Difluorobenzene	5.619	114	125360	5.000	ug/L	0.00
28) Chlorobenzene-d5	8.854	117	125952	5.000	ug/L	0.00
58) 1,4-Dichlorobenzene-d4	11.249	152	59212	5.000	ug/L	0.00
System Monitoring Compounds						
4) Vinyl Chloride-d3	1.304	65	34689	4.417	ug/L	0.00
Spiked Amount	5.000	Range 40 - 130	Recovery	=	88.400%	
7) Chloroethane-d5	1.568	69	32405	5.063	ug/L	0.00
Spiked Amount	5.000	Range 65 - 130	Recovery	=	101.200%	
11) 1,1-Dichloroethene-d2	2.108	63	53235	3.621	ug/L	0.00
Spiked Amount	5.000	Range 60 - 125	Recovery	=	72.400%	
20) 2-Butanone-d5	3.905	46	73546	54.358	ug/L	0.00
Spiked Amount	50.000	Range 40 - 130	Recovery	=	108.720%	
24) Chloroform-d	4.352	84	84268	5.035	ug/L	0.00
Spiked Amount	5.000	Range 70 - 125	Recovery	=	100.600%	
26) 1,2-Dichloroethane-d4	5.037	65	40259	5.349	ug/L	0.00
Spiked Amount	5.000	Range 70 - 130	Recovery	=	107.000%	
32) Benzene-d6	5.053	84	159194	4.926	ug/L	0.00
Spiked Amount	5.000	Range 70 - 125	Recovery	=	98.600%	
36) 1,2-Dichloropropane-d6	6.072	67	49995	5.255	ug/L	0.00
Spiked Amount	5.000	Range 60 - 140	Recovery	=	105.200%	
41) Toluene-d8	7.317	98	135323	4.468	ug/L	0.00
Spiked Amount	5.000	Range 70 - 130	Recovery	=	89.400%	
43) trans-1,3-Dichloroprop...	7.629	79	17875	4.955	ug/L	0.00
Spiked Amount	5.000	Range 55 - 130	Recovery	=	99.200%	
46) 2-Hexanone-d5	8.092	63	67246	50.668	ug/L	0.00
Spiked Amount	50.000	Range 45 - 130	Recovery	=	101.340%	
56) 1,1,2,2-Tetrachloroeth...	10.217	84	35134	5.136	ug/L	0.00
Spiked Amount	5.000	Range 65 - 120	Recovery	=	102.800%	
66) 1,2-Dichlorobenzene-d4	11.625	152	54149	5.492	ug/L	0.00
Spiked Amount	5.000	Range 80 - 120	Recovery	=	109.800%	
-----						
Target Compounds						Qvalue
3) Chloromethane	1.240	50	1929	0.186	ug/L	97
13) Acetone	2.015	43	13525	16.360	ug/L	59
22) cis-1,2-Dichloroethene	3.915	96	2672	0.302	ug/L #	75
33) Benzene	5.105	78	5664	0.161	ug/L	100
34) Trichloroethene	5.915	95	32689	3.492	ug/L	99
35) Methylcyclohexane	6.069	83	12297	0.832	ug/L #	18
37) 1,2-Dichloropropane	6.072	63	5654	0.688	ug/L #	83
39) cis-1,3-Dichloropropene	6.992	75	1307	0.111	ug/L #	48
48) 2-Hexanone	8.146	43	2340	0.876	ug/L #	86
61) 1,2,3-Trichloropropane	10.702	75	260	0.066	ug/L #	56
-----						

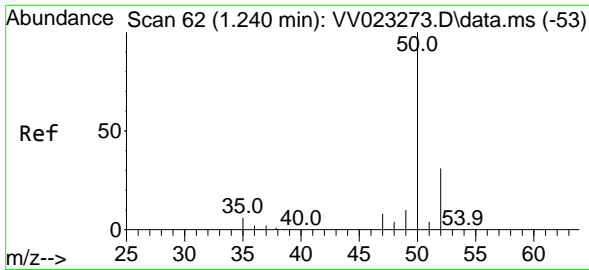
(#) = qualifier out of range (m) = manual integration (+) = signals summed

Data Path : Z:\voasrv\HPCHEM1\MSVOA\_V\Data\VV110821\  
 Data File : VV023277.D  
 Acq On : 08 Nov 2021 14:30  
 Operator : SY/MD  
 Sample : M4492-01  
 Misc : 25.0mL/MSVOA\_V/WATER  
 ALS Vial : 6 Sample Multiplier: 1

Instrument :  
 MSVOA\_V  
 ClientSampleId :

Quant Time: Nov 09 05:15:36 2021  
 Quant Method : Z:\voasrv\HPCHEM1\MSVOA\_V\Method\SFAMVTR110421WMA.M  
 Quant Title : TRACE VOA SFAM1.0  
 QLast Update : Tue Nov 09 05:13:22 2021  
 Response via : Initial Calibration

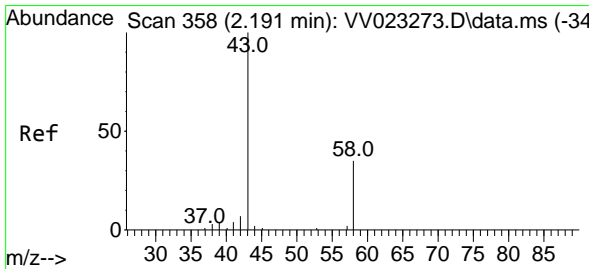
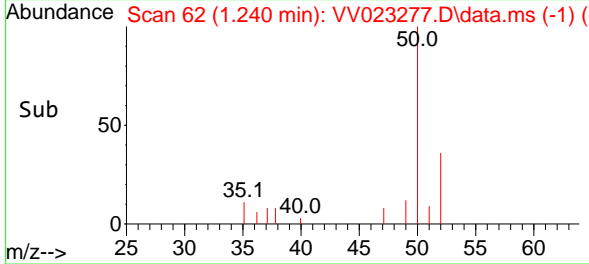
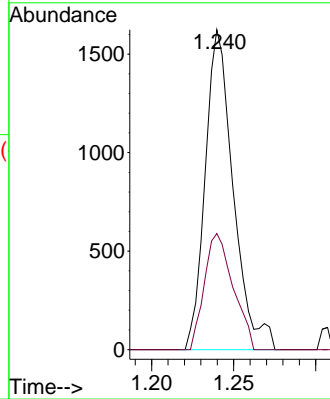
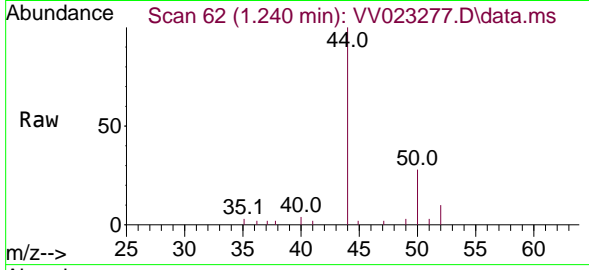




#3  
 Chloromethane  
 Concen: 0.186 ug/L  
 RT: 1.240 min Scan# 61  
 Delta R.T. -0.000 min  
 Lab File: VV023277.D  
 Acq: 08 Nov 2021 14:30

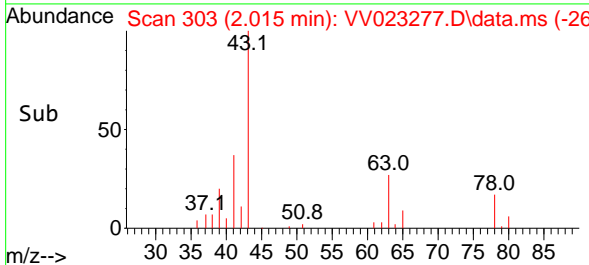
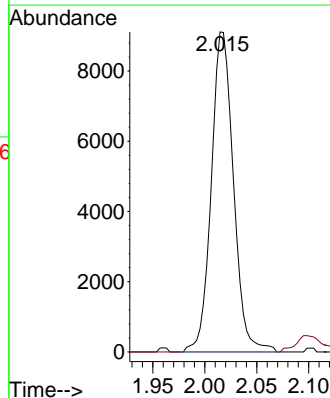
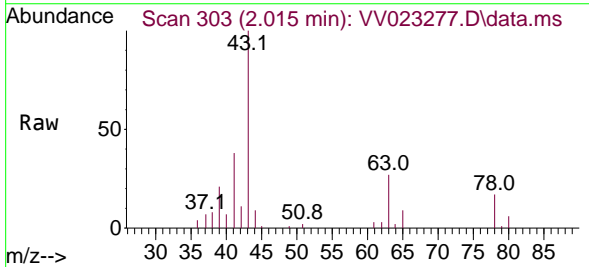
Instrument :  
 MSVOA\_V  
 ClientSampleId :

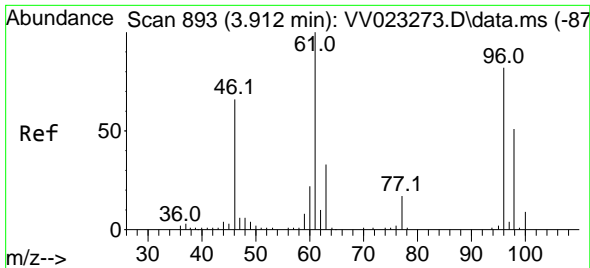
Tgt Ion: 50 Resp: 1929  
 Ion Ratio Lower Upper  
 50 100  
 52 36.3 24.3 45.1



#13  
 Acetone  
 Concen: 16.360 ug/L  
 RT: 2.015 min Scan# 303  
 Delta R.T. -0.177 min  
 Lab File: VV023277.D  
 Acq: 08 Nov 2021 14:30

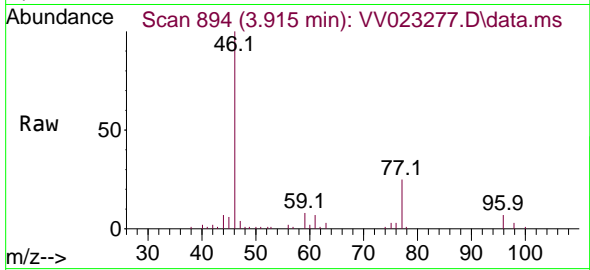
Tgt Ion: 43 Resp: 13525  
 Ion Ratio Lower Upper  
 43 100  
 58 6.4 0.0 55.4



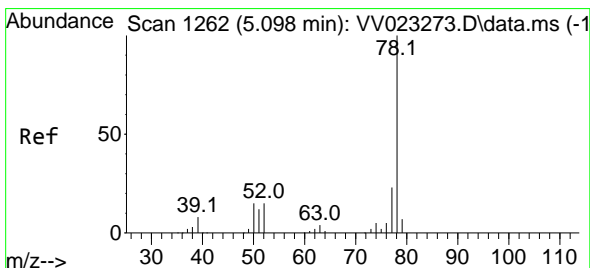
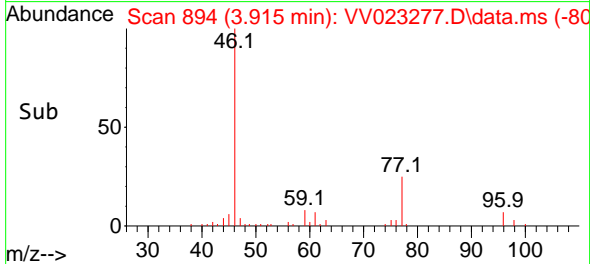
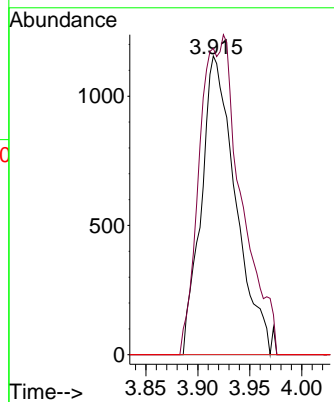


#22  
 cis-1,2-Dichloroethene  
 Concen: 0.302 ug/L  
 RT: 3.915 min Scan# 894  
 Delta R.T. 0.003 min  
 Lab File: VV023277.D  
 Acq: 08 Nov 2021 14:30

Instrument : MSVOA\_V  
 ClientSampleId :

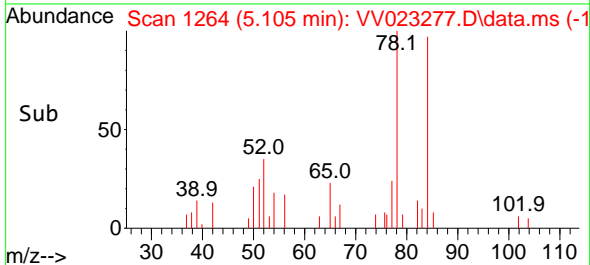
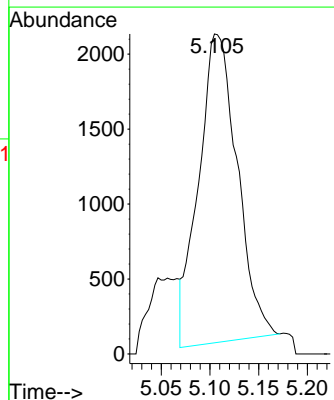
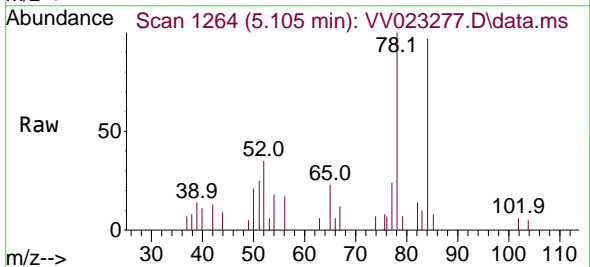


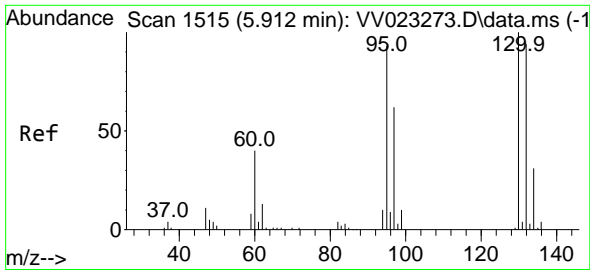
Tgt Ion: 96 Resp: 2672  
 Ion Ratio Lower Upper  
 96 100  
 61 102.5 92.3 171.3  
 68 0.0 0.4 0.8#



#33  
 Benzene  
 Concen: 0.161 ug/L  
 RT: 5.105 min Scan# 1264  
 Delta R.T. 0.006 min  
 Lab File: VV023277.D  
 Acq: 08 Nov 2021 14:30

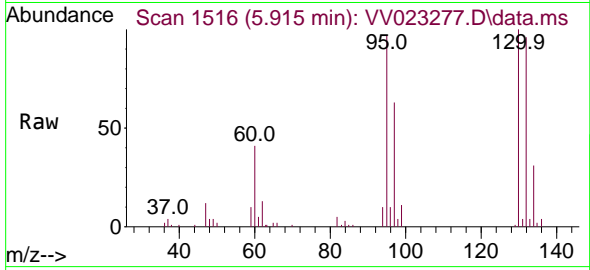
Tgt Ion: 78 Resp: 5664



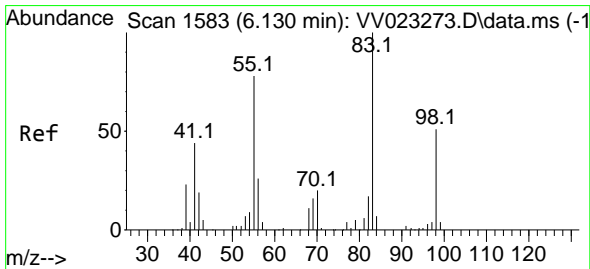
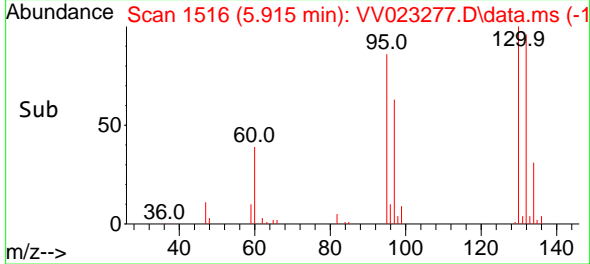
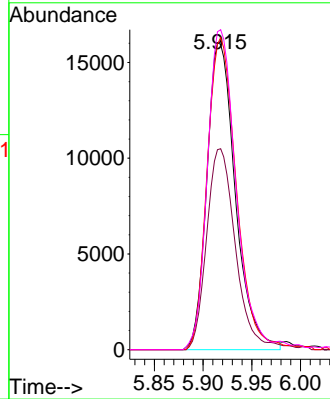


#34  
 Trichloroethene  
 Concen: 3.492 ug/L  
 RT: 5.915 min Scan# 1515  
 Delta R.T. 0.003 min  
 Lab File: VV023277.D  
 Acq: 08 Nov 2021 14:30

Instrument : MSVOA\_V  
 ClientSampleId :

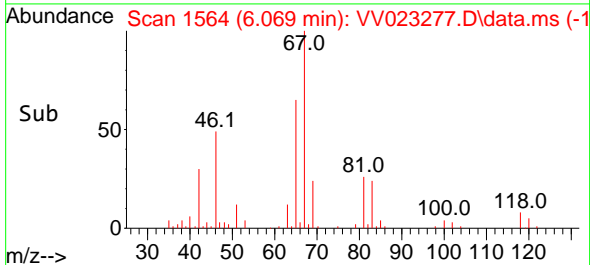
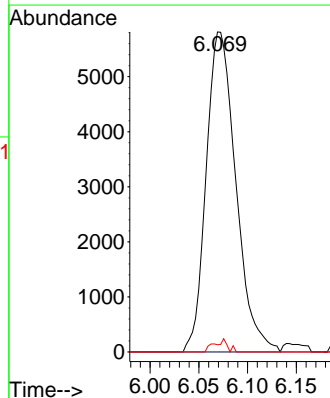
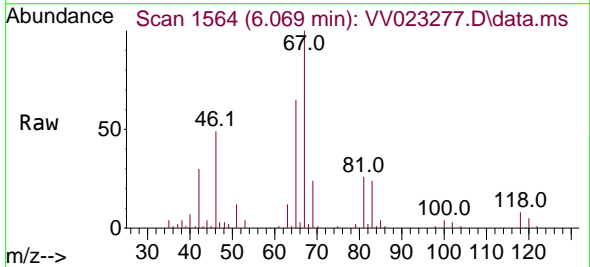


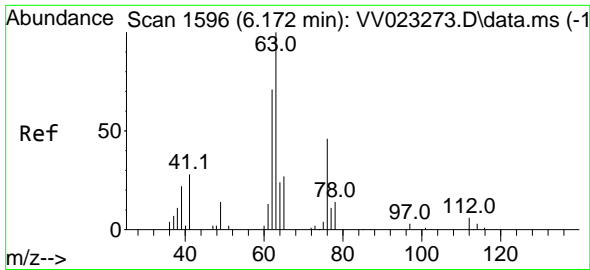
Tgt Ion: 95 Resp: 32689  
 Ion Ratio Lower Upper  
 95 100  
 97 65.2 45.0 83.6  
 132 99.5 69.7 129.4  
 130 103.6 73.7 136.9



#35  
 Methylcyclohexane  
 Concen: 0.832 ug/L  
 RT: 6.069 min Scan# 1564  
 Delta R.T. -0.061 min  
 Lab File: VV023277.D  
 Acq: 08 Nov 2021 14:30

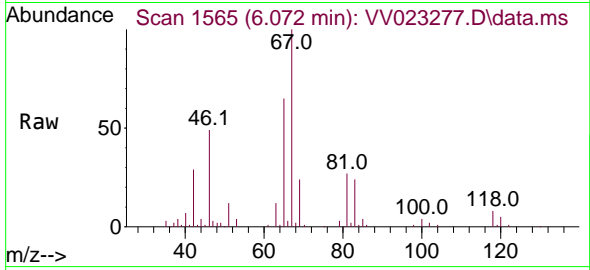
Tgt Ion: 83 Resp: 12297  
 Ion Ratio Lower Upper  
 83 100  
 55 0.0 62.8 94.2#  
 98 1.8 37.9 56.9#



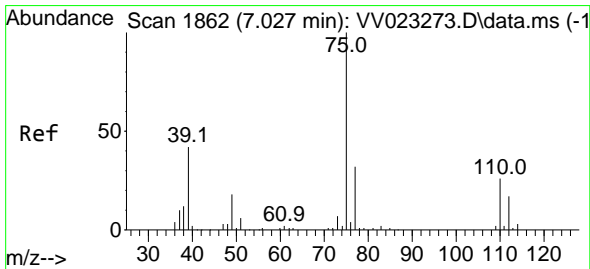
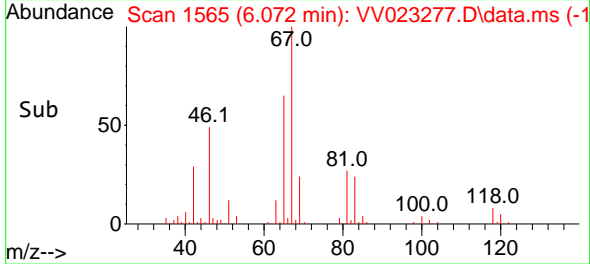
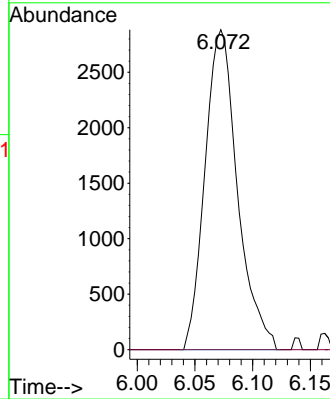


#37  
 1,2-Dichloropropane  
 Concen: 0.688 ug/L  
 RT: 6.072 min Scan# 1111  
 Delta R.T. -0.100 min  
 Lab File: VV023277.D  
 Acq: 08 Nov 2021 14:30

Instrument : MSVOA\_V  
 ClientSampleId :

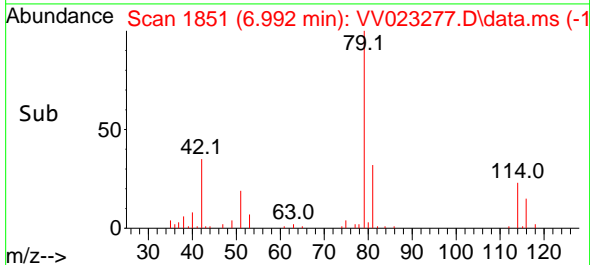
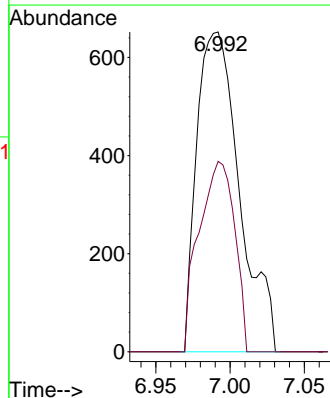
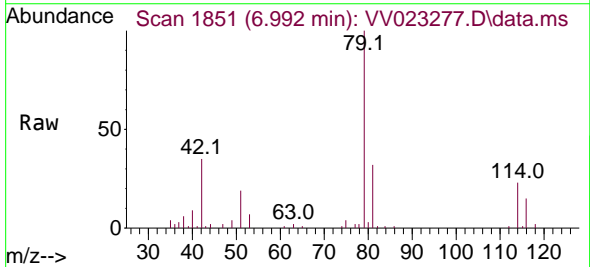


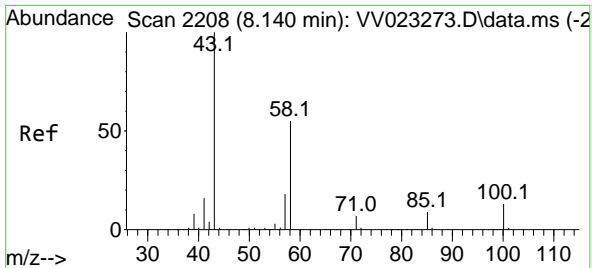
Tgt Ion: 63 Resp: 5654  
 Ion Ratio Lower Upper  
 63 100  
 112 0.0 4.6 6.8#



#39  
 cis-1,3-Dichloropropene  
 Concen: 0.111 ug/L  
 RT: 6.992 min Scan# 1851  
 Delta R.T. -0.035 min  
 Lab File: VV023277.D  
 Acq: 08 Nov 2021 14:30

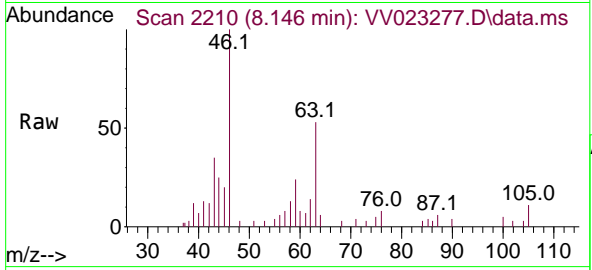
Tgt Ion: 75 Resp: 1307  
 Ion Ratio Lower Upper  
 75 100  
 77 59.5 21.6 40.2#





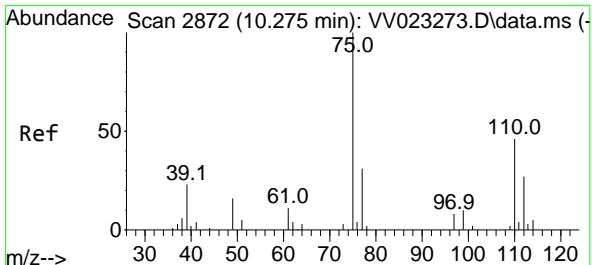
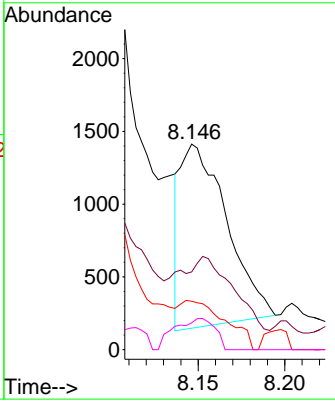
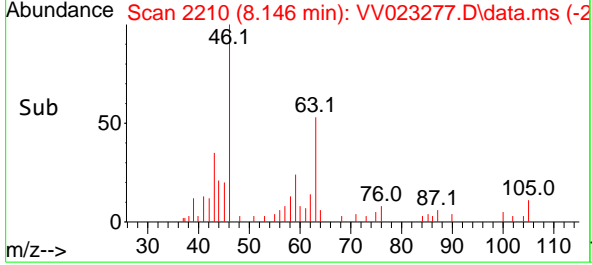
#48  
 2-Hexanone  
 Concen: 0.876 ug/L  
 RT: 8.146 min Scan# 21  
 Delta R.T. 0.006 min  
 Lab File: VV023277.D  
 Acq: 08 Nov 2021 14:30

Instrument :  
 MSVOA\_V  
 ClientSampleId :

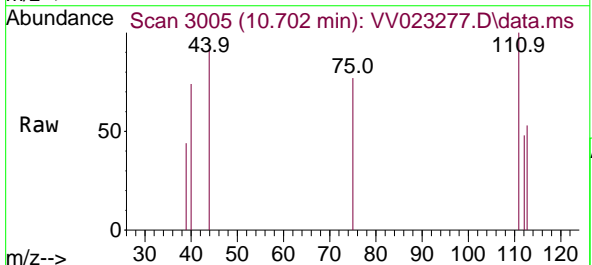


Tgt Ion: 43 Resp: 2340

Ion	Ratio	Lower	Upper
43	100		
58	64.4	43.7	65.5
57	26.2	14.1	21.1#
100	14.9	10.2	15.2



#61  
 1,2,3-Trichloropropane  
 Concen: 0.066 ug/L  
 RT: 10.702 min Scan# 3005  
 Delta R.T. 0.428 min  
 Lab File: VV023277.D  
 Acq: 08 Nov 2021 14:30



Tgt Ion: 75 Resp: 260

Ion	Ratio	Lower	Upper
75	100		
77	0.0	26.6	39.8#
110	20.4	31.8	47.6#

