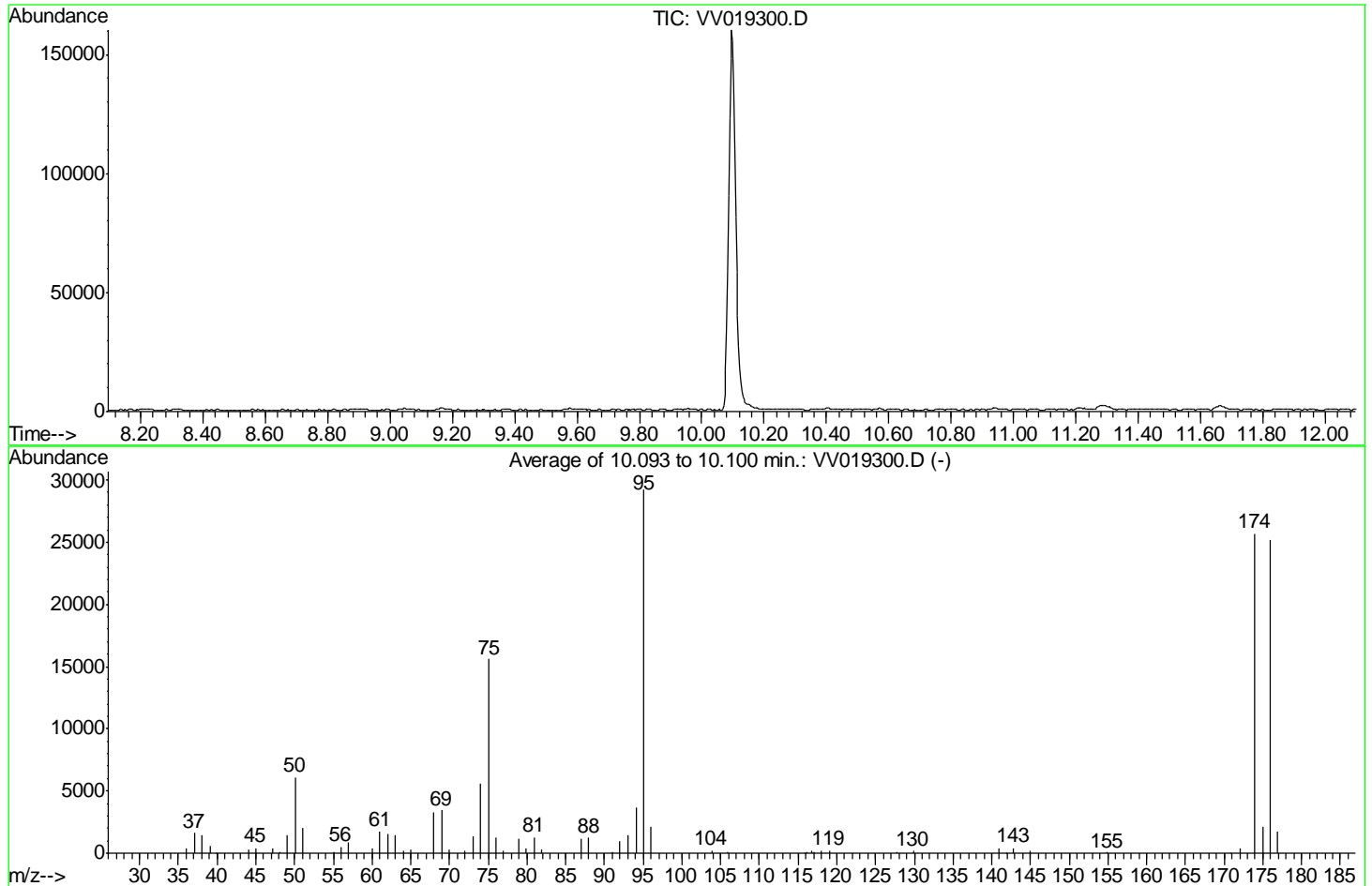


Data Path : Z:\voasrv\HPCHEM1\MSVOA V\Data\VV110920\
 Data File : VV019300.D
 Acq On : 09 Nov 2020 12:49
 Operator : SY/MD
 Sample : BFB62
 Misc : 5.0mL/MSVOA V/WATER
 ALS Vial : 1 Sample Multiplier: 1

Instrument :
 MSVOA_V
 ClientSampleId :
 BFB306

Integration File: LSCINT.P

Method : Z:\VOASRV\HPCHEM1\MSVOA_V\METHOD\SFAMVLM110320WMA.M
 Title : VOC Analysis
 Last Update : Tue Nov 10 06:58:38 2020



AutoFind: Scans 2800, 2801, 2802; Background Corrected with Scan 2790

Target Mass	Rel. to Mass	Lower Limit%	Upper Limit%	Rel. Abn%	Raw Abn	Result Pass/Fail
50	95	15	40	20.9	6120	PASS
75	95	30	80	53.5	15630	PASS
95	95	100	100	100.0	29224	PASS
96	95	5	9	7.1	2082	PASS
173	174	0.00	2	0.0	0	PASS
174	95	50	120	87.9	25690	PASS
175	174	5	9	8.1	2086	PASS
176	174	95	101	98.2	25216	PASS
177	176	5	9	7.0	1765	PASS

m/z	Abundance
35.90	386.0
37.10	1577.0
38.00	1430.0
39.10	518.0
39.90	164.0
44.00	854.0
45.00	380.0
47.10	430.0
48.00	140.0
49.00	1411.0
50.00	5974.0
51.00	1920.0
55.00	130.0
56.00	445.0
57.00	822.0
60.10	288.0
61.00	1728.0
62.00	1598.0
63.00	1360.0
64.00	165.0
65.00	319.0
68.00	3157.0
69.00	3385.0
70.00	284.0
72.00	224.0
73.10	1299.0
74.00	5532.0
75.10	15015.0
76.00	1240.0
77.00	220.0
78.90	1155.0
79.90	371.0
80.90	1268.0
81.90	293.0
87.00	1074.0
88.00	1099.0
91.00	129.0
92.00	929.0
93.00	1402.0
94.10	3467.0
95.10	28080.0
96.00	2113.0
103.80	199.0
105.90	106.0
115.80	105.0
116.80	250.0
118.00	177.0
119.00	194.0
127.80	151.0
129.90	168.0
140.90	388.0
142.80	486.0
144.90	217.0
172.00	375.0
174.00	24448.0
175.00	1923.0
176.00	23696.0
176.90	1534.0

Instrument :
MSVOA_V
ClientSampleId :
BFB306

m/z	Abundance
35.90	369.0
37.10	1685.0
38.00	1445.0
39.10	593.0
39.90	169.0
44.00	870.0
45.00	418.0
47.20	406.0
48.10	137.0
49.00	1534.0
50.00	6358.0
51.00	2069.0
55.00	145.0
56.00	526.0
57.00	905.0
60.10	375.0
61.00	1834.0
62.00	1617.0
63.00	1570.0
64.00	168.0
65.00	347.0
68.00	3440.0
69.00	3583.0
70.00	283.0
72.00	242.0
73.10	1437.0
74.00	5760.0
75.10	16162.0
76.10	1282.0
77.00	203.0
79.00	1232.0
79.90	369.0
80.90	1338.0
81.90	337.0
87.00	1170.0
88.00	1292.0
91.00	114.0
92.00	992.0
93.00	1501.0
94.10	3886.0
95.10	30184.0
96.10	2166.0
103.90	223.0
105.90	137.0
116.10	119.0
116.80	242.0
118.00	191.0
119.00	206.0
127.80	157.0
129.90	167.0
140.90	438.0
141.90	100.0
142.80	425.0
144.90	206.0
154.90	108.0
172.00	412.0
174.00	26632.0
175.00	2137.0
176.00	26112.0
177.00	1802.0

Instrument :
MSVOA_V
ClientSampleId :
BFB306

m/z	Abundance
36.00	328.0
37.10	1528.0
38.10	1354.0
39.10	639.0
40.00	173.0
44.00	885.0
45.00	404.0
47.20	327.0
48.10	154.0
49.00	1530.0
50.10	6029.0
51.00	1962.0
55.00	125.0
56.00	536.0
57.00	920.0
60.00	406.0
61.00	1669.0
62.00	1502.0
63.00	1537.0
64.00	159.0
65.10	316.0
68.00	3312.0
69.00	3378.0
70.00	217.0
72.00	199.0
73.00	1402.0
74.00	5501.0
75.10	15714.0
76.10	1274.0
77.00	198.0
78.90	1143.0
79.90	330.0
80.90	1240.0
81.90	351.0
87.00	1127.0
88.00	1314.0
91.00	109.0
92.00	977.0
93.00	1499.0
94.10	3772.0
95.10	29408.0
96.10	1967.0
103.90	172.0
105.90	137.0
116.10	119.0
117.00	241.0
117.90	173.0
119.00	186.0
127.80	134.0
129.90	125.0
140.90	426.0
142.80	400.0
144.90	162.0
154.90	108.0
170.90	101.0
172.00	437.0
174.00	25992.0
174.90	2198.0
176.00	25840.0
177.00	1961.0

Instrument :
MSVOA_V
ClientSampleId :
BFB306

m/z	Abundance
39.90	153.0
44.00	561.0

Instrument :
MSVOA_V
ClientSampleId :
BFB306