

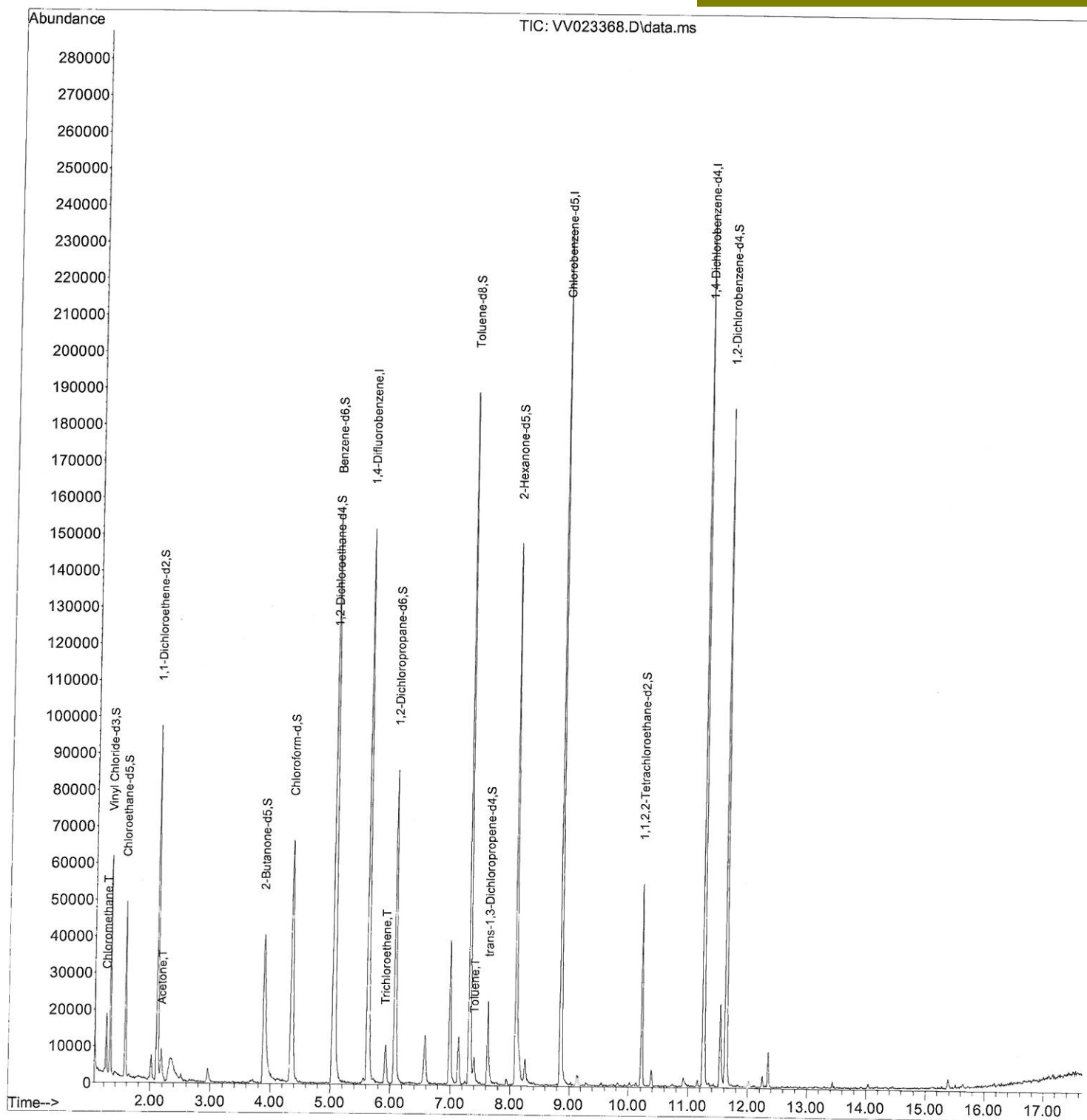
Data Path : Z:\voasrv\HPCHEM1\MSVOA_V\Data\VV111021\
Data File : VV023368.D
Acq On : 11 Nov 2021 06:04
Operator : SY/MD
Sample : M4542-11
Misc : 25.0mL/MSVOA_V/WATER
ALS Vial : 53 Sample Multiplier: 1

Instrument :
MSVOA_V
Client Sampled :
BGGF7

Quant Time: Nov 11 06:22:49 2021
Quant Method : Z:\voasrv\HPCHEM1\MSVOA_V\Method\SFAMVTR110421WMA.M
Quant Title : TRACE VOA SFAM1.0
QLast Update : Thu Nov 11 03:34:54 2021
Response via : Initial Calibration

Manual Integrations APPROVED

Reviewed By : John Carlone 11/15/2021
Supervised By : Mahesh Dadoda 11/15/2021



Quantitation Report (Qedit)

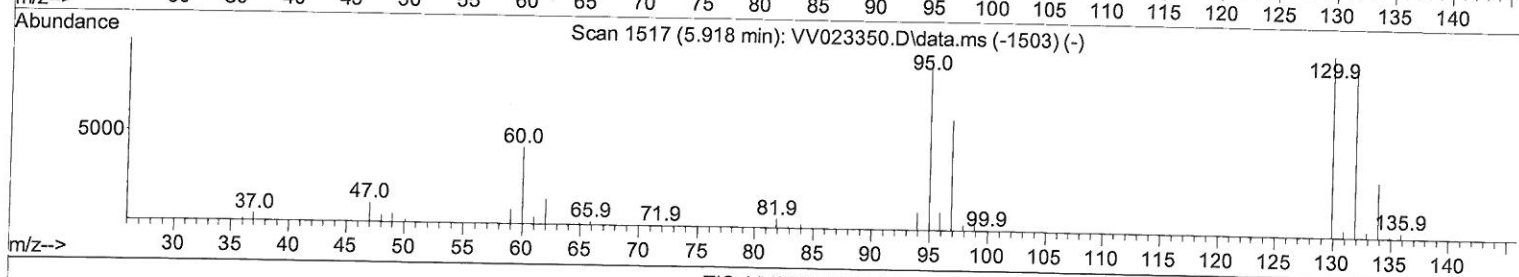
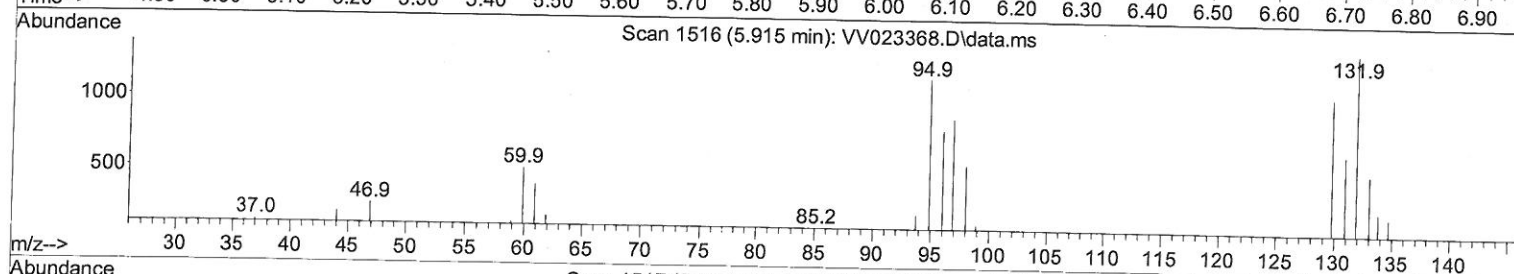
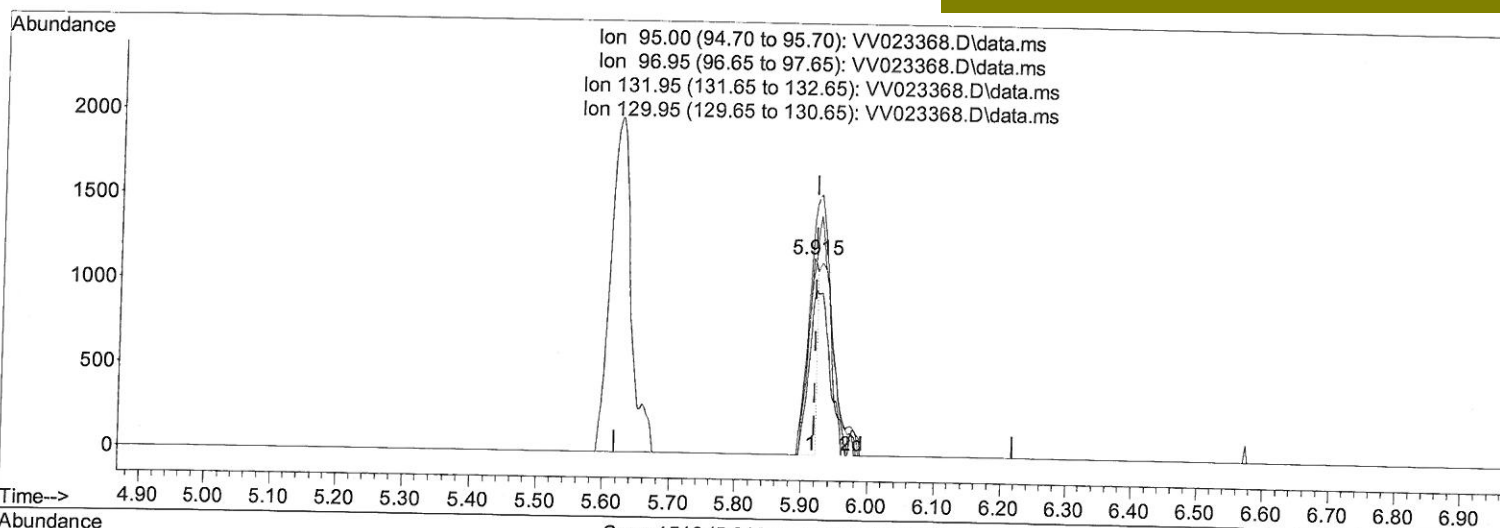
Data Path : Z:\voasrv\HPCHEM1\MSVOA_V\Data\VV111021\
 Data File : VV023368.D
 Acq On : 11 Nov 2021 06:04
 Operator : SY/MD
 Sample : M4542-11
 Misc : 25.0mL/MSVOA_V/WATER
 ALS Vial : 53 Sample Multiplier: 1

Instrument :
 MSVOA_V
 Client Sampled :
 BGGF7

Quant Time: Nov 11 06:22:49 2021
 Quant Method : Z:\voasrv\HPCHEM1\MSVOA_V\Method\SFAMVTR110421WMA.M
 Quant Title : TRACE VOA SFAM1.0
 QLast Update : Thu Nov 11 03:34:54 2021
 Response via : Initial Calibration

Manual Integrations APPROVED

Reviewed By : John Carlone 11/15/2021
 Supervised By : Mahesh Dadoda 11/15/2021



TIC: VV023368.D\data.ms

(34) Trichloroethene (T)

5.915min (-0.003) 0.12 ug/L

response 1190

Ion	Exp%	Act%
95.00	100.00	100.00
96.95	64.30	76.01
131.95	99.50	118.57
129.95	105.30	91.40

Quantitation Report (Qedit)

Data Path : Z:\voasrv\HPCHEM1\MSVOA_V\Data\VV111021\
 Data File : VV023368.D
 Acq On : 11 Nov 2021 06:04
 Operator : SY/MD
 Sample : M4542-11
 Misc : 25.0mL/MSVOA_V/WATER
 ALS Vial : 53 Sample Multiplier: 1

Instrument :
 MSVOA_V
 Client Sampled :
 BGGF7

Quant Time: Nov 11 06:22:49 2021

Quant Method : Z:\voasrv\HPCHEM1\MSVOA_V\Method\SFAMVTR110421WMA.M

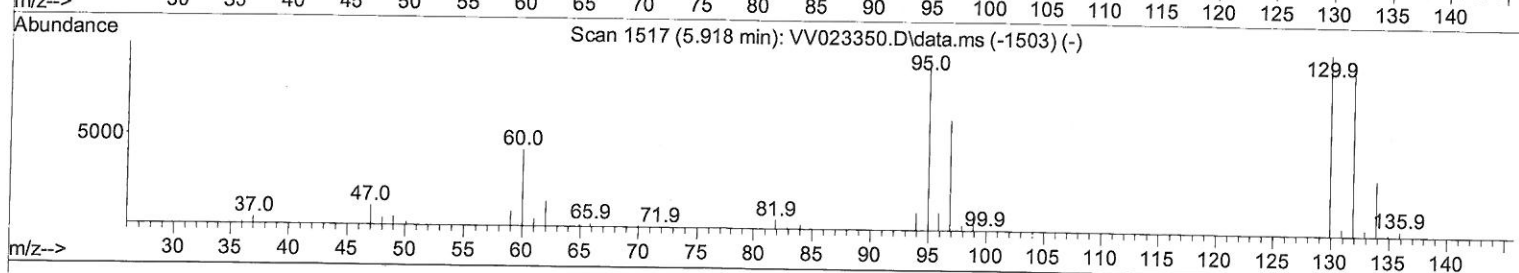
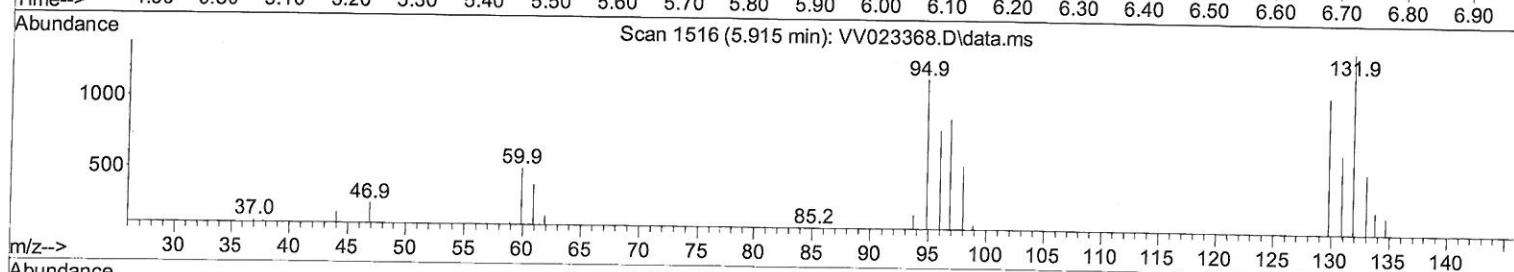
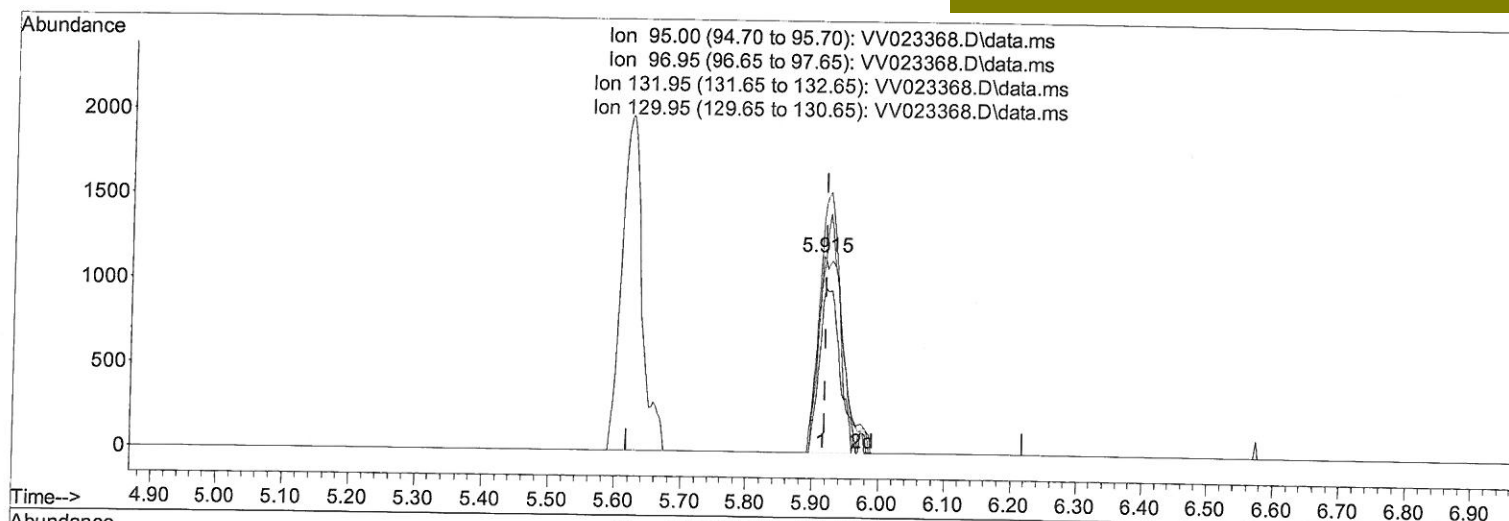
Quant Title : TRACE VOA SFAM1.0

QLast Update : Thu Nov 11 03:34:54 2021

Response via : Initial Calibration

Manual Integrations APPROVED

Reviewed By : John Carlone 11/15/2021
 Supervised By : Mahesh Dadoda 11/15/2021



TIC: VV023368.D\data.ms

(34) Trichloroethene (T)

5.915min (-0.003) 0.28 ug/L m

response 2734

Ion	Exp%	Act%
95.00	100.00	100.00
96.95	64.30	76.01
131.95	99.50	118.57
129.95	105.30	91.40

SY MD
 11/19/21

Quantitation Report (QT/LSC Reviewed)

Data Path : Z:\voasrv\HPCHEM1\MSVOA_V\Data\VW111021\
 Data File : VW023368.D
 Acq On : 11 Nov 2021 06:04
 Operator : SY/MD
 Sample : M4542-11
 Misc : 25.0mL/MSVOA_V/WATER
 ALS Vial : 53 Sample Multiplier: 1

Instrument :
 MSVOA_V
 Client Sampled :
 BGGF7

Quant Time: Nov 11 06:22:49 2021
 Quant Method : Z:\voasrv\HPCHEM1\MSVOA_V\Method\SFAMVTR110421WMA.M
 Quant Title : TRACE VOA SFAM1.0
 QLast Update : Thu Nov 11 03:34:54 2021
 Response via : Initial Calibration

Manual Integrations APPROVED

Reviewed By : John Carlone 11/15/2021
 Supervised By : Mahesh Dadoda 11/15/2021

Compound	R.T.	QIon	Response	Conc	Units	Dev(Min)
Internal Standards						
1) 1,4-Difluorobenzene	5.619	114	135099	5.000	ug/L	0.00
28) Chlorobenzene-d5	8.854	117	129888	5.000	ug/L	0.00
58) 1,4-Dichlorobenzene-d4	11.249	152	64537	5.000	ug/L	0.00
System Monitoring Compounds						
4) Vinyl Chloride-d3	1.307	65	36224	4.280	ug/L	0.00
Spiked Amount 5.000	Range 40 - 130		Recovery =	85.600%		
7) Chloroethane-d5	1.568	69	29839	4.326	ug/L	0.00
Spiked Amount 5.000	Range 65 - 130		Recovery =	86.600%		
11) 1,1-Dichloroethene-d2	2.111	63	50867	3.210	ug/L	0.00
Spiked Amount 5.000	Range 60 - 125		Recovery =	64.200%		
20) 2-Butanone-d5	3.886	46	68061	46.678	ug/L	0.00
Spiked Amount 50.000	Range 40 - 130		Recovery =	93.360%		
24) Chloroform-d	4.352	84	69517	3.854	ug/L	0.00
Spiked Amount 5.000	Range 70 - 125		Recovery =	77.000%		
26) 1,2-Dichloroethane-d4	5.037	65	33792	4.166	ug/L	0.00
Spiked Amount 5.000	Range 70 - 130		Recovery =	83.400%		
32) Benzene-d6	5.053	84	143240	4.298	ug/L	0.00
Spiked Amount 5.000	Range 70 - 125		Recovery =	86.000%		
36) 1,2-Dichloropropane-d6	6.072	67	40801	4.159	ug/L	0.00
Spiked Amount 5.000	Range 60 - 140		Recovery =	83.200%		
41) Toluene-d8	7.317	98	127240	4.074	ug/L	0.00
Spiked Amount 5.000	Range 70 - 130		Recovery =	81.400%		
43) trans-1,3-Dichloroprop...	7.628	79	13620	3.661	ug/L	0.00
Spiked Amount 5.000	Range 55 - 130		Recovery =	73.200%		
46) 2-Hexanone-d5	8.088	63	50168	36.654	ug/L	0.00
Spiked Amount 50.000	Range 45 - 130		Recovery =	73.300%		
56) 1,1,2,2-Tetrachloroeth...	10.217	84	25868	3.667	ug/L	0.00
Spiked Amount 5.000	Range 65 - 120		Recovery =	73.400%		
66) 1,2-Dichlorobenzene-d4	11.625	152	48065	4.473	ug/L	0.00
Spiked Amount 5.000	Range 80 - 120		Recovery =	89.400%		
Target Compounds						
3) Chloromethane	1.240	50	10197	0.910	ug/L	93
13) Acetone	2.179	43	11714	13.148	ug/L	90
34) Trichloroethene	5.915	95	2734m	0.283	ug/L	
42) Toluene	7.397	91	5272	0.136	ug/L	85

(#) = qualifier out of range (m) = manual integration (+) = signals summed

7 MD
11/19/21