

Data Path : Z:\voasrv\HPCHEM1\MSVOA_V\Data\VV111021\
 Data File : VV023351.D
 Acq On : 10 Nov 2021 23:26
 Operator : SY/MD
 Sample : VV1110WBL01
 Misc : 25.0mL/MSVOA_V/WATER
 ALS Vial : 36 Sample Multiplier: 1

Instrument :
 MSVOA_V
 ClientSampleId :
 VBLK247

Integration Parameters: rteint.p
 Integrator: RTE
 Smoothing : ON Filtering: 5
 Sampling : 1 Min Area: 3 % of largest Peak
 Start Thrs: 0.1 Max Peaks: 100
 Stop Thrs : 0 Peak Location: TOP

If leading or trailing edge < 100 prefer < Baseline drop else tangent >
 Peak separation: 5

Method : Z:\voasrv\HPCHEM1\MSVOA_V\Method\SFAMVTR110421WMA.M
 Title : TRACE VOA SFAM1.0

Signal : TIC: VV023351.D\data.ms

peak #	R.T. min	first scan	max scan	last scan	PK TY	peak height	corr. area	corr. % max.	% of total
1	1.307	76	83	96	rVB	61615	62886	15.57%	1.871%
2	1.568	157	164	178	rVB	51783	58751	14.54%	1.748%
3	2.111	321	333	349	rBV	100711	147498	36.51%	4.388%
4	2.510	448	457	471	rVB2	8083	13633	3.37%	0.406%
5	3.899	880	889	913	rBV	34362	110457	27.34%	3.286%
6	4.355	1014	1031	1060	rBV	69760	177015	43.81%	5.266%
7	5.053	1232	1248	1273	rBV4	163242	404014	100.00%	12.018%
8	5.622	1413	1425	1448	rBV	141376	288086	71.31%	8.570%
9	6.072	1553	1565	1586	rBV	90798	188025	46.54%	5.593%
10	6.992	1839	1851	1876	rBV	42561	81670	20.21%	2.429%
11	7.320	1942	1953	1971	rBV	193414	341590	84.55%	10.161%
12	7.628	2039	2049	2068	rBV2	25345	46677	11.55%	1.389%
13	8.091	2183	2193	2228	rBV	167408	331533	82.06%	9.862%
14	8.853	2418	2430	2455	rBV	220832	368145	91.12%	10.951%
15	10.217	2838	2854	2872	rBV2	61370	99932	24.73%	2.973%
16	11.249	3164	3175	3195	rBV	221053	346699	85.81%	10.313%
17	11.625	3279	3292	3311	rBV	187293	295014	73.02%	8.776%

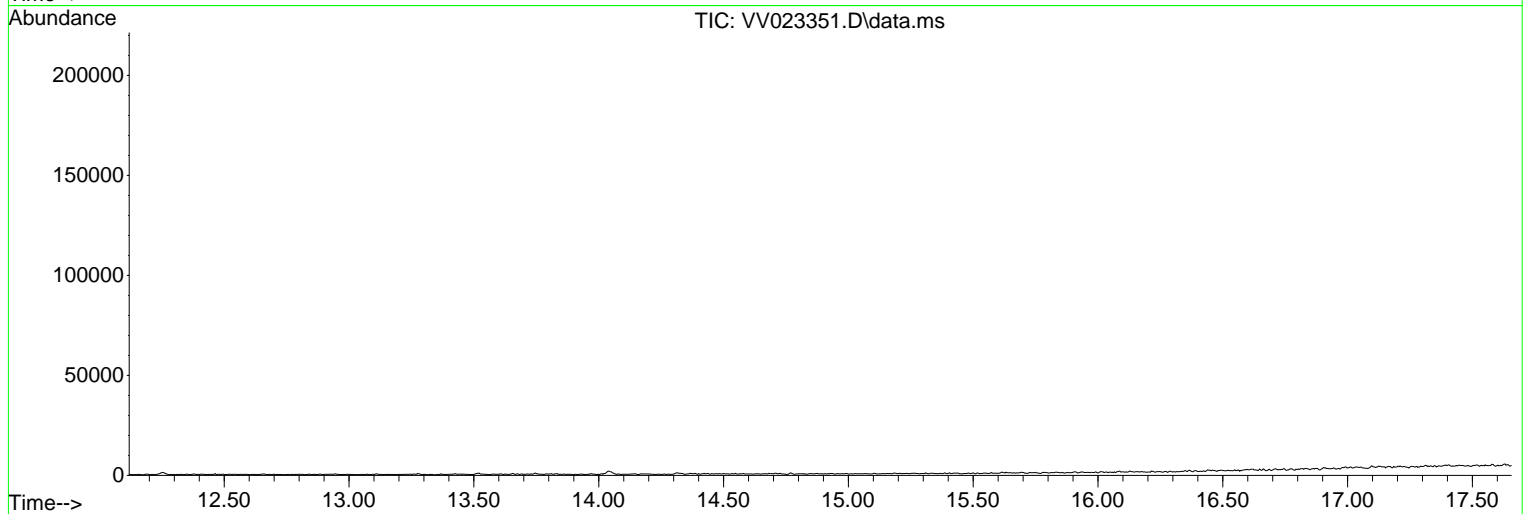
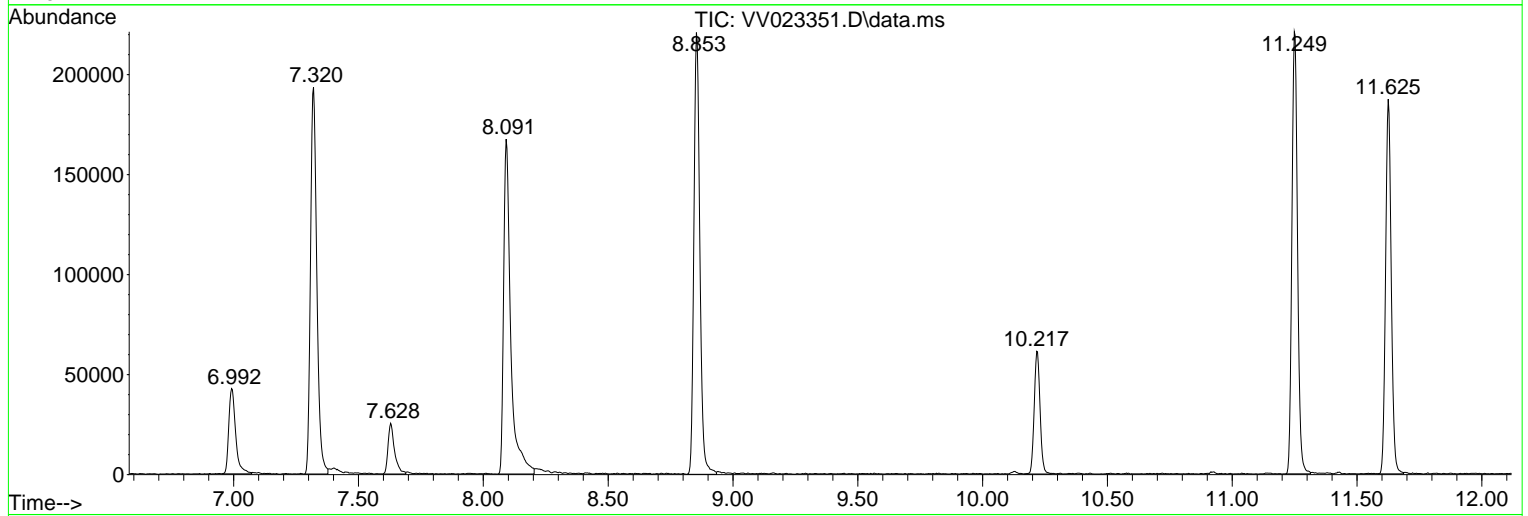
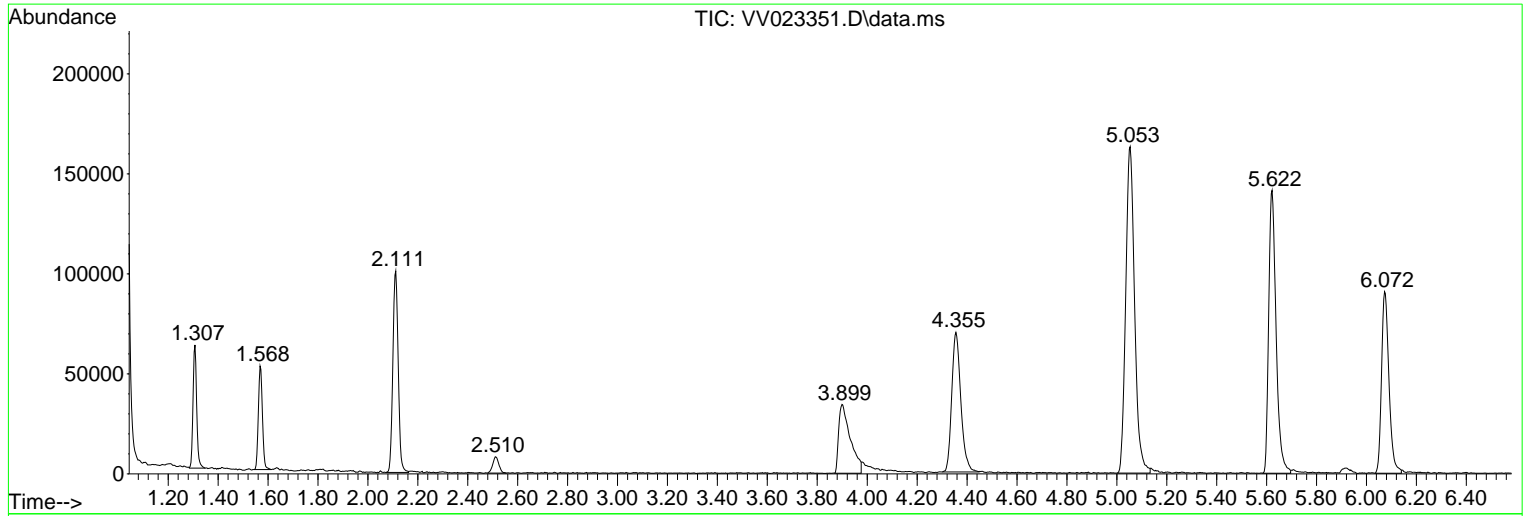
Sum of corrected areas: 3361625

Data Path : Z:\voasrv\HPCHEM1\MSVOA_V\Data\VV111021\
 Data File : VV023351.D
 Acq On : 10 Nov 2021 23:26
 Operator : SY/MD
 Sample : VV1110WBL01
 Misc : 25.0mL/MSVOA_V/WATER
 ALS Vial : 36 Sample Multiplier: 1

Instrument :
 MSVOA_V
 ClientSampleId :
 VBLK247

Quant Method : Z:\voasrv\HPCHEM1\MSVOA_V\Method\SFAMVTR110421WMA.M
 Quant Title : TRACE VOA SFAM1.0

TIC Library : C:\Database\NIST20.L
 TIC Integration Parameters: LSCINT.P



Library Search Compound Report

Data Path : Z:\voasrv\HPCHEM1\MSVOA_V\Data\VV111021\
Data File : VV023351.D
Acq On : 10 Nov 2021 23:26
Operator : SY/MD
Sample : VV1110WBL01
Misc : 25.0mL/MSVOA_V/WATER
ALS Vial : 36 Sample Multiplier: 1

Instrument :
MSVOA_V
ClientSampleId :
VBLK247

Quant Method : Z:\voasrv\HPCHEM1\MSVOA_V\Method\SFAMVTR110421WMA.M
Quant Title : TRACE VOA SFAM1.0

TIC Library : C:\Database\NIST20.L
TIC Integration Parameters: LSCINT.P

No Library Search Compounds Detected

Data Path : Z:\voasrv\HPCHEM1\MSVOA_V\Data\VV111021\
Data File : VV023351.D
Acq On : 10 Nov 2021 23:26
Operator : SY/MD
Sample : VV1110WBL01
Misc : 25.0mL/MSVOA_V/WATER
ALS Vial : 36 Sample Multiplier: 1

Instrument :
MSVOA_V
ClientSampleId :
VBLK247

Quant Method : Z:\voasrv\HPCHEM1\MSVOA_V\Method\SFAMVTR110421WMA.M
Quant Title : TRACE VOA SFAM1.0

TIC Library : C:\Database\NIST0.L
TIC Integration Parameters: LSCINT.P

TIC Top Hit name	RT	EstConc	Units	Response	--Internal Standard--		
					#	RT	Resp Conc
