

Data Path : Z:\voasrv\HPCHEM1\MSVOA\_V\Data\VW111021\  
 Data File : VW023399.D  
 Acq On : 11 Nov 2021 19:47  
 Operator : SY/MD  
 Sample : M4542-04  
 Misc : 25.0mL/MSVOA\_V/WATER  
 ALS Vial : 7 Sample Multiplier: 1

Instrument :  
 MSVOA\_V  
 ClientSampleId :  
 BGGF5

Integration Parameters: rteint.p  
 Integrator: RTE  
 Smoothing : ON  
 Sampling : 1  
 Start Thrs : 0.1  
 Stop Thrs : 0  
 Filtering: 5  
 Min Area: 3 % of largest Peak  
 Max Peaks: 100  
 Peak Location: TOP

If leading or trailing edge < 100 prefer < Baseline drop else tangent >  
 Peak separation: 5

Method : Z:\voasrv\HPCHEM1\MSVOA\_V\Method\SFAMVTR110421WMA.M  
 Title : TRACE VOA SFAM1.0

Signal : TIC: VW023399.D\data.ms

| peak # | R.T. min | first scan | max scan | last scan | PK TY | peak height | corr. area | corr. % max. | % of total |
|--------|----------|------------|----------|-----------|-------|-------------|------------|--------------|------------|
| 1      | 1.243    | 57         | 63       | 71        | rVB3  | 4630        | 6141       | 1.68%        | 0.188%     |
| 2      | 1.307    | 75         | 83       | 93        | rVB   | 50149       | 51042      | 13.96%       | 1.560%     |
| 3      | 1.568    | 156        | 164      | 174       | rBV   | 42731       | 48199      | 13.18%       | 1.473%     |
| 4      | 2.108    | 319        | 332      | 345       | rBV   | 87229       | 126747     | 34.65%       | 3.874%     |
| 5      | 2.179    | 345        | 354      | 372       | rVB   | 8996        | 21416      | 5.86%        | 0.655%     |
| 6      | 2.960    | 586        | 597      | 607       | rBV7  | 2931        | 6692       | 1.83%        | 0.205%     |
| 7      | 3.690    | 807        | 824      | 839       | rBV7  | 3374        | 9224       | 2.52%        | 0.282%     |
| 8      | 3.889    | 877        | 886      | 923       | rBV2  | 41399       | 135242     | 36.98%       | 4.133%     |
| 9      | 4.352    | 1011       | 1030     | 1056      | rBV   | 66558       | 164184     | 44.89%       | 5.018%     |
| 10     | 5.047    | 1230       | 1246     | 1276      | rBV2  | 145151      | 365746     | 100.00%      | 11.178%    |
| 11     | 5.619    | 1412       | 1424     | 1445      | rBV   | 134973      | 275369     | 75.29%       | 8.416%     |
| 12     | 5.915    | 1506       | 1516     | 1527      | rVB10 | 4155        | 8891       | 2.43%        | 0.272%     |
| 13     | 6.072    | 1552       | 1565     | 1584      | rBV2  | 80934       | 172192     | 47.08%       | 5.262%     |
| 14     | 6.577    | 1707       | 1722     | 1738      | rVB6  | 6339        | 16807      | 4.60%        | 0.514%     |
| 15     | 6.989    | 1837       | 1850     | 1870      | rBV   | 39858       | 75745      | 20.71%       | 2.315%     |
| 16     | 7.137    | 1884       | 1896     | 1911      | rBV3  | 10503       | 21201      | 5.80%        | 0.648%     |
| 17     | 7.317    | 1941       | 1952     | 1971      | rBV   | 172107      | 305308     | 83.48%       | 9.331%     |
| 18     | 7.400    | 1971       | 1978     | 1990      | rVB3  | 4686        | 8666       | 2.37%        | 0.265%     |
| 19     | 7.625    | 2037       | 2048     | 2072      | rBV2  | 23348       | 44019      | 12.04%       | 1.345%     |
| 20     | 7.940    | 2134       | 2146     | 2155      | rBV2  | 3440        | 6106       | 1.67%        | 0.187%     |
| 21     | 8.092    | 2182       | 2193     | 2230      | rBV   | 163485      | 314408     | 85.96%       | 9.609%     |
| 22     | 8.252    | 2234       | 2243     | 2255      | rVV7  | 3903        | 7378       | 2.02%        | 0.225%     |
| 23     | 8.854    | 2418       | 2430     | 2452      | rBV   | 208517      | 344367     | 94.15%       | 10.524%    |
| 24     | 10.217   | 2844       | 2854     | 2869      | rBV2  | 56201       | 89241      | 24.40%       | 2.727%     |
| 25     | 10.381   | 2897       | 2905     | 2915      | rVB2  | 6007        | 9417       | 2.57%        | 0.288%     |
| 26     | 11.249   | 3165       | 3175     | 3192      | rBV   | 197223      | 311481     | 85.16%       | 9.519%     |
| 27     | 11.532   | 3254       | 3263     | 3277      | rBV3  | 14995       | 27360      | 7.48%        | 0.836%     |
| 28     | 11.625   | 3281       | 3292     | 3311      | rVB   | 170549      | 268819     | 73.50%       | 8.215%     |
| 29     | 12.252   | 3477       | 3487     | 3497      | rVB4  | 2532        | 3943       | 1.08%        | 0.121%     |
| 30     | 12.345   | 3507       | 3516     | 3528      | rBV3  | 13776       | 20717      | 5.66%        | 0.633%     |
| 31     | 15.114   | 4369       | 4377     | 4384      | rBV7  | 4388        | 6042       | 1.65%        | 0.185%     |

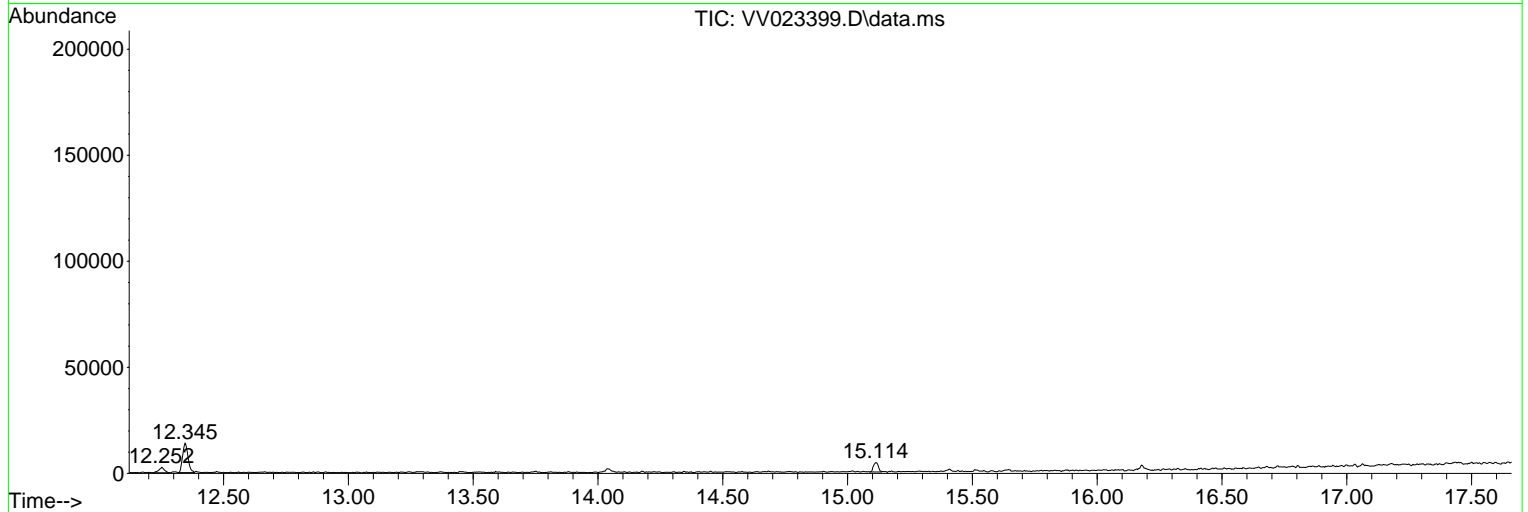
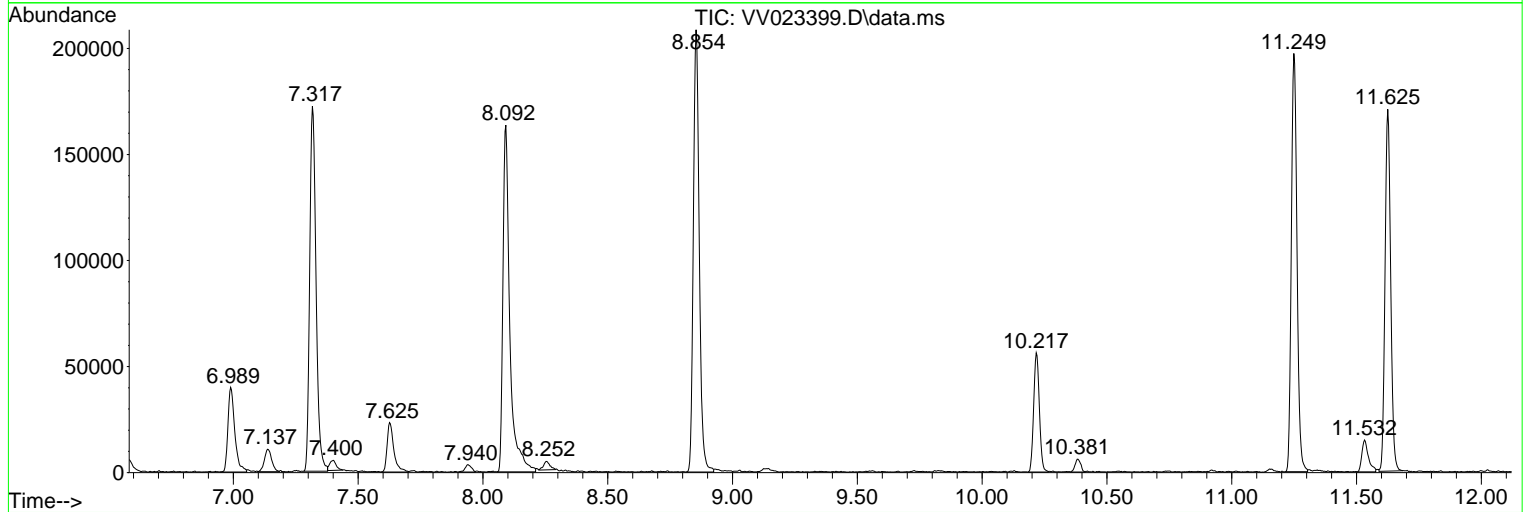
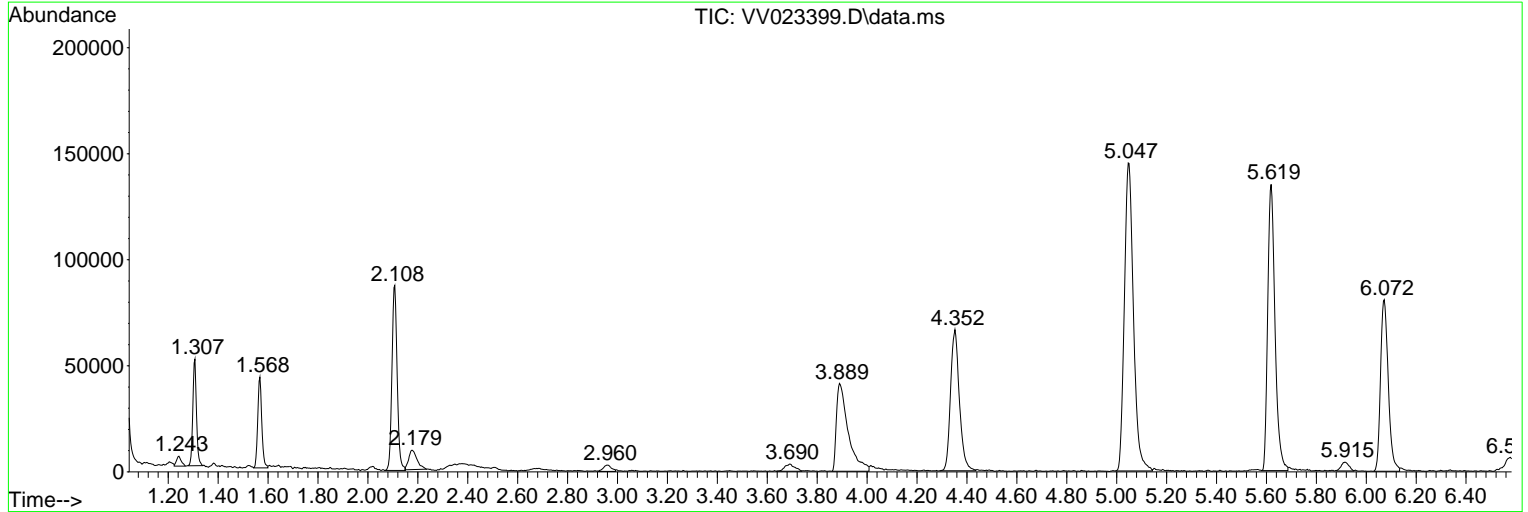
Sum of corrected areas: 3272110

Data Path : Z:\voasrv\HPCHEM1\MSVOA\_V\Data\VV111021\  
 Data File : VV023399.D  
 Acq On : 11 Nov 2021 19:47  
 Operator : SY/MD  
 Sample : M4542-04  
 Misc : 25.0mL/MSVOA\_V/WATER  
 ALS Vial : 7 Sample Multiplier: 1

Instrument :  
 MSVOA\_V  
 ClientSampleId :  
 BGGF5

Quant Method : Z:\voasrv\HPCHEM1\MSVOA\_V\Method\SFAMVTR110421WMA.M  
 Quant Title : TRACE VOA SFAM1.0

TIC Library : C:\Database\NIST20.L  
 TIC Integration Parameters: LSCINT.P



Library Search Compound Report

Data Path : Z:\voasrv\HPCHEM1\MSVOA\_V\Data\VV111021\  
Data File : VV023399.D  
Acq On : 11 Nov 2021 19:47  
Operator : SY/MD  
Sample : M4542-04  
Misc : 25.0mL/MSVOA\_V/WATER  
ALS Vial : 7 Sample Multiplier: 1

Instrument :  
MSVOA\_V  
ClientSampleId :  
BGGF5

Quant Method : Z:\voasrv\HPCHEM1\MSVOA\_V\Method\SFAMVTR110421WMA.M  
Quant Title : TRACE VOA SFAM1.0

TIC Library : C:\Database\NIST20.L  
TIC Integration Parameters: LSCINT.P

No Library Search Compounds Detected

\*\*\*\*\*

Data Path : Z:\voasrv\HPCHEM1\MSVOA\_V\Data\VW111021\  
Data File : VV023399.D  
Acq On : 11 Nov 2021 19:47  
Operator : SY/MD  
Sample : M4542-04  
Misc : 25.0mL/MSVOA\_V/WATER  
ALS Vial : 7 Sample Multiplier: 1

Instrument :  
MSVOA\_V  
ClientSampleId :  
BGGF5

Quant Method : Z:\voasrv\HPCHEM1\MSVOA\_V\Method\SFAMVTR110421WMA.M  
Quant Title : TRACE VOA SFAM1.0

TIC Library : C:\Database\NIST0.L  
TIC Integration Parameters: LSCINT.P

| TIC Top Hit name | RT | EstConc | Units | Response | --Internal Standard-- |    |           |
|------------------|----|---------|-------|----------|-----------------------|----|-----------|
|                  |    |         |       |          | #                     | RT | Resp Conc |

---