

Data Path : Z:\voasrv\HPCHEM1\MSVOA_V\Data\VW111221\
 Data File : VV023467.D
 Acq On : 13 Nov 2021 01:37
 Operator : SY/MD
 Sample : M4581-11
 Misc : 25.0mL/MSVOA_V/WATER
 ALS Vial : 26 Sample Multiplier: 1

Instrument :
 MSVOA_V
 ClientSampleId :

Quant Time: Nov 13 02:00:58 2021
 Quant Method : Z:\voasrv\HPCHEM1\MSVOA_V\Method\SFAMVTR110421WMA.M
 Quant Title : TRACE VOA SFAM1.0
 QLast Update : Sat Nov 13 01:39:11 2021
 Response via : Initial Calibration

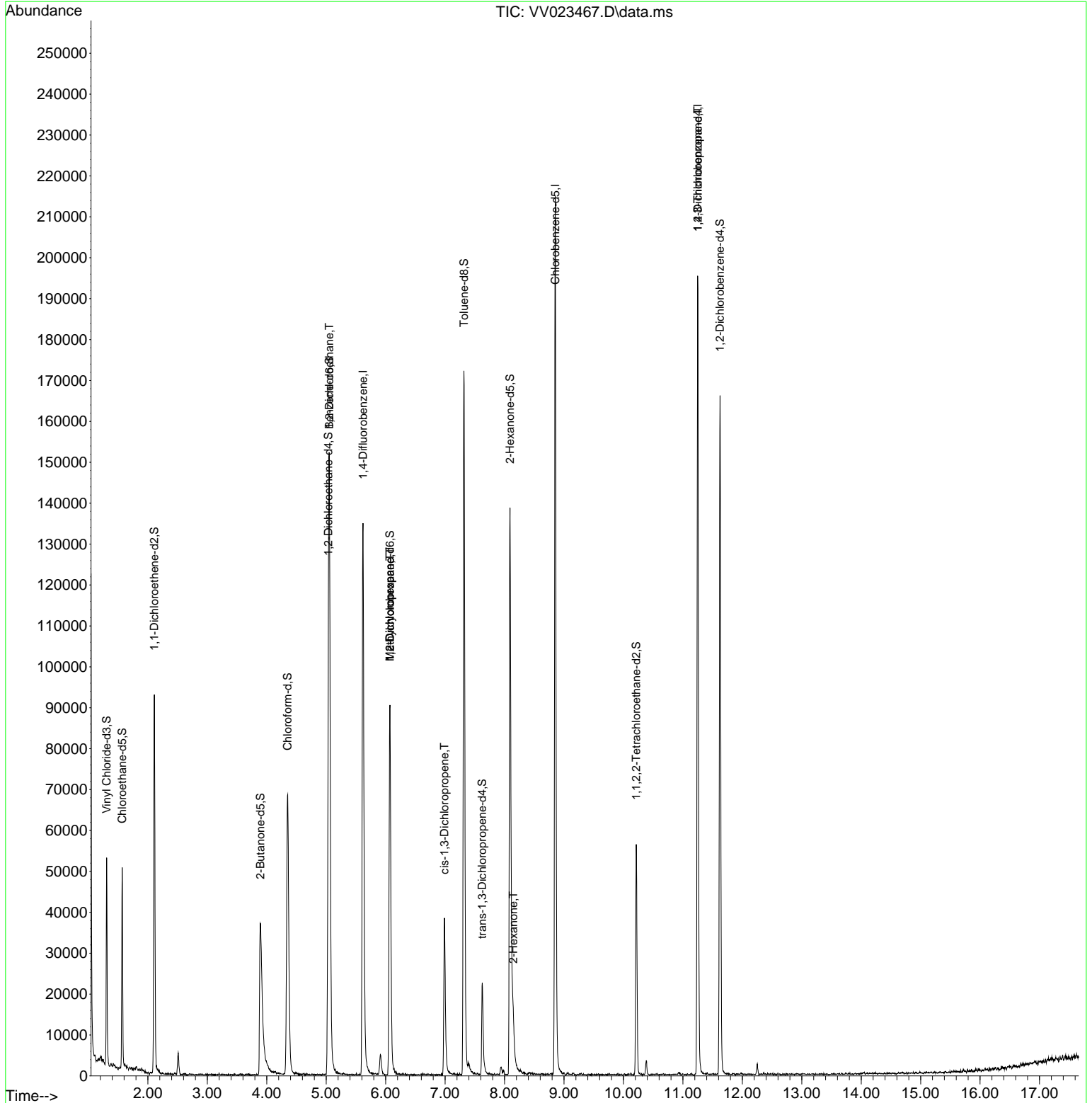
Compound	R.T.	QIon	Response	Conc	Units	Dev(Min)
Internal Standards						
1) 1,4-Difluorobenzene	5.619	114	120358	5.000	ug/L	-0.02
28) Chlorobenzene-d5	8.854	117	119996	5.000	ug/L	0.00
58) 1,4-Dichlorobenzene-d4	11.249	152	52465	5.000	ug/L	0.00
System Monitoring Compounds						
4) Vinyl Chloride-d3	1.307	65	31625	4.194	ug/L	0.00
Spiked Amount	5.000	Range 40 - 130	Recovery	=	83.800%	
7) Chloroethane-d5	1.568	69	28302	4.606	ug/L	0.00
Spiked Amount	5.000	Range 65 - 130	Recovery	=	92.200%	
11) 1,1-Dichloroethene-d2	2.108	63	47422	3.360	ug/L	-0.01
Spiked Amount	5.000	Range 60 - 125	Recovery	=	67.200%	
20) 2-Butanone-d5	3.892	46	66315	51.051	ug/L	-0.10
Spiked Amount	50.000	Range 40 - 130	Recovery	=	102.100%	
24) Chloroform-d	4.352	84	72678	4.523	ug/L	0.00
Spiked Amount	5.000	Range 70 - 125	Recovery	=	90.400%	
26) 1,2-Dichloroethane-d4	5.037	65	35156	4.865	ug/L	-0.02
Spiked Amount	5.000	Range 70 - 130	Recovery	=	97.400%	
32) Benzene-d6	5.053	84	137555	4.468	ug/L	0.00
Spiked Amount	5.000	Range 70 - 125	Recovery	=	89.400%	
36) 1,2-Dichloropropane-d6	6.072	67	42581	4.698	ug/L	-0.02
Spiked Amount	5.000	Range 60 - 140	Recovery	=	94.000%	
41) Toluene-d8	7.317	98	116010	4.021	ug/L	0.00
Spiked Amount	5.000	Range 70 - 130	Recovery	=	80.400%	
43) trans-1,3-Dichloroprop...	7.625	79	13434	3.909	ug/L	0.00
Spiked Amount	5.000	Range 55 - 130	Recovery	=	78.200%	
46) 2-Hexanone-d5	8.092	63	44068	34.852	ug/L	-0.02
Spiked Amount	50.000	Range 45 - 130	Recovery	=	69.700%	
56) 1,1,2,2-Tetrachloroeth...	10.217	84	25771	3.954	ug/L	0.00
Spiked Amount	5.000	Range 65 - 120	Recovery	=	79.000%	
66) 1,2-Dichlorobenzene-d4	11.625	152	44283	5.069	ug/L	0.00
Spiked Amount	5.000	Range 80 - 120	Recovery	=	101.400%	
Target Compounds						
27) 1,2-Dichloroethane	5.053	62	874	0.103	ug/L #	72
35) Methylcyclohexane	6.072	83	10749	0.764	ug/L #	18
37) 1,2-Dichloropropane	6.072	63	5052	0.645	ug/L #	83
39) cis-1,3-Dichloropropene	6.989	75	1194	0.106	ug/L #	73
48) 2-Hexanone	8.146	43	8408	3.304	ug/L	95
61) 1,2,3-Trichloropropane	11.249	75	5654	1.622	ug/L #	66

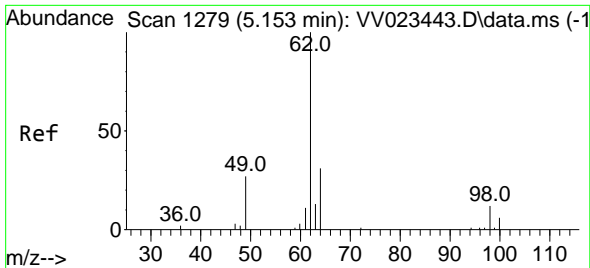
(#) = qualifier out of range (m) = manual integration (+) = signals summed

Data Path : Z:\voasrv\HPCHEM1\MSVOA_V\Data\VV111221\
 Data File : VV023467.D
 Acq On : 13 Nov 2021 01:37
 Operator : SY/MD
 Sample : M4581-11
 Misc : 25.0mL/MSVOA_V/WATER
 ALS Vial : 26 Sample Multiplier: 1

Instrument :
 MSVOA_V
 ClientSampleId :

Quant Time: Nov 13 02:00:58 2021
 Quant Method : Z:\voasrv\HPCHEM1\MSVOA_V\Method\SFAMVTR110421WMA.M
 Quant Title : TRACE VOA SFAM1.0
 QLast Update : Sat Nov 13 01:39:11 2021
 Response via : Initial Calibration

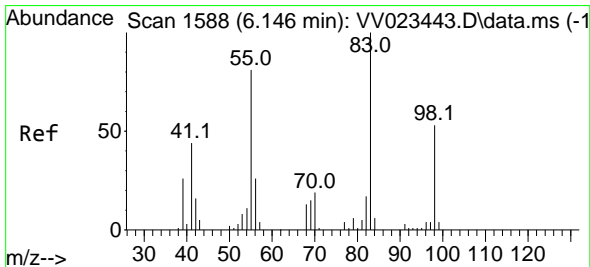
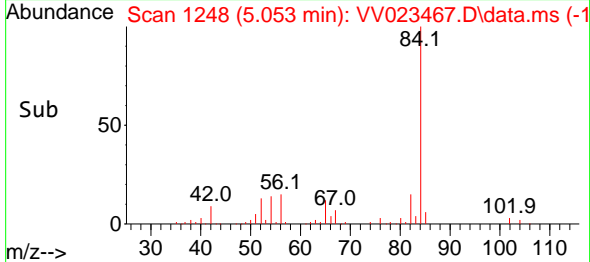
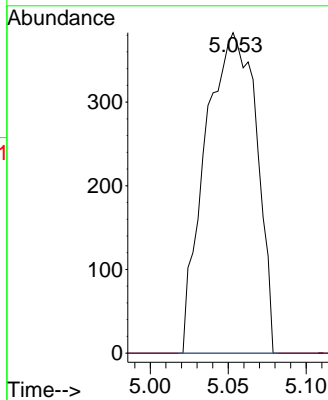
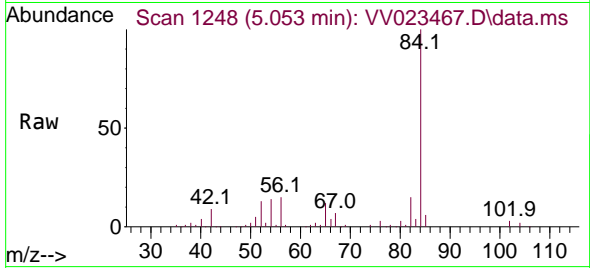




#27
 1,2-Dichloroethane
 Concen: 0.103 ug/L
 RT: 5.053 min Scan# 11
 Delta R.T. -0.100 min
 Lab File: VV023467.D
 Acq: 13 Nov 2021 01:37

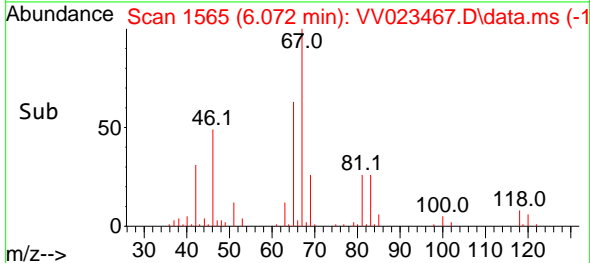
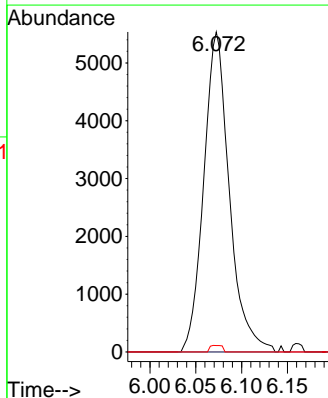
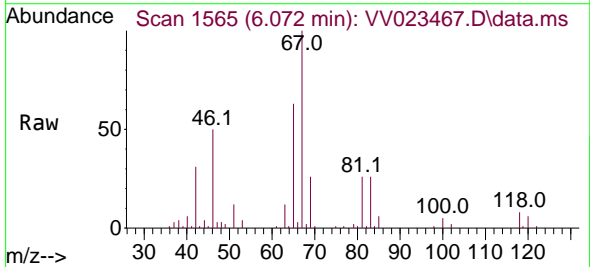
Instrument :
 MSVOA_V
 ClientSampleId :

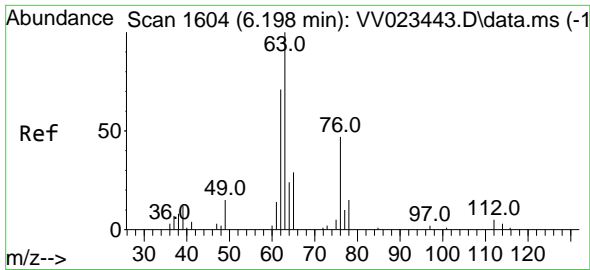
Tgt Ion: 62 Resp: 874
 Ion Ratio Lower Upper
 62 100
 98 0.0 8.2 12.4#



#35
 Methylcyclohexane
 Concen: 0.764 ug/L
 RT: 6.072 min Scan# 1565
 Delta R.T. -0.074 min
 Lab File: VV023467.D
 Acq: 13 Nov 2021 01:37

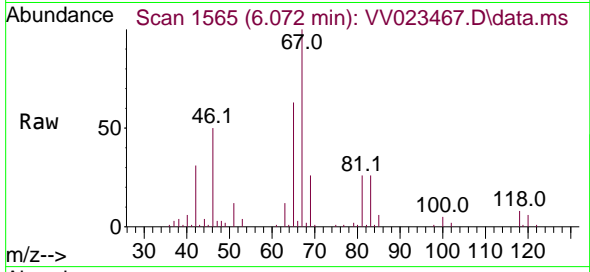
Tgt Ion: 83 Resp: 10749
 Ion Ratio Lower Upper
 83 100
 55 0.0 62.8 94.2#
 98 1.0 37.9 56.9#



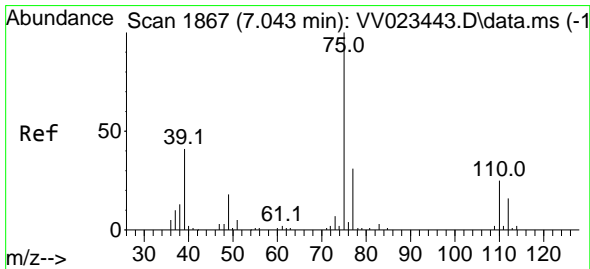
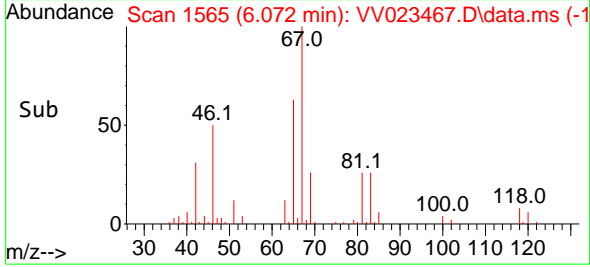
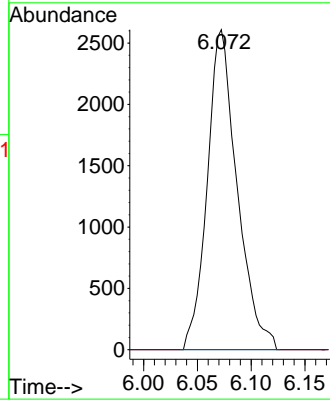


#37
 1,2-Dichloropropane
 Concen: 0.645 ug/L
 RT: 6.072 min Scan# 11
 Delta R.T. -0.125 min
 Lab File: VV023467.D
 Acq: 13 Nov 2021 01:37

Instrument :
 MSVOA_V
 ClientSampleId :

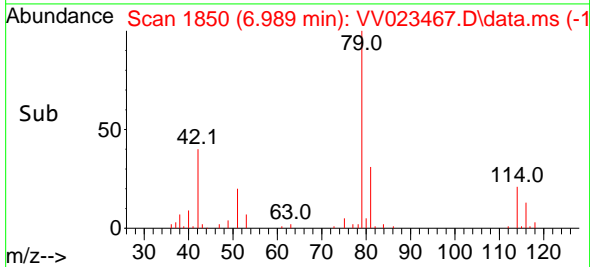
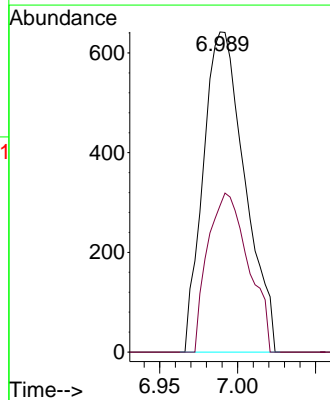
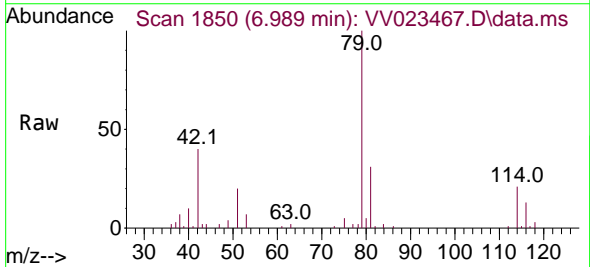


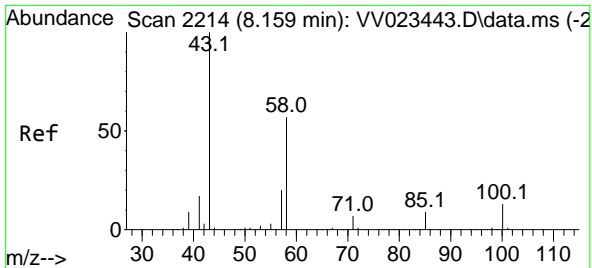
Tgt Ion: 63 Resp: 5052
 Ion Ratio Lower Upper
 63 100
 112 0.0 4.6 6.8#



#39
 cis-1,3-Dichloropropene
 Concen: 0.106 ug/L
 RT: 6.989 min Scan# 1850
 Delta R.T. -0.055 min
 Lab File: VV023467.D
 Acq: 13 Nov 2021 01:37

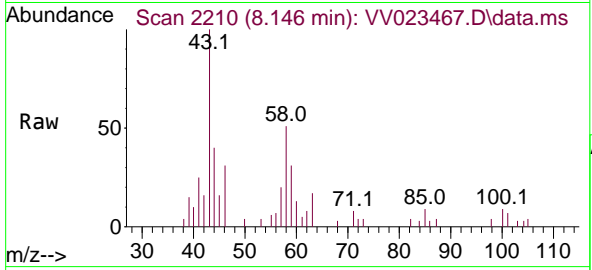
Tgt Ion: 75 Resp: 1194
 Ion Ratio Lower Upper
 75 100
 77 45.8 21.6 40.2#





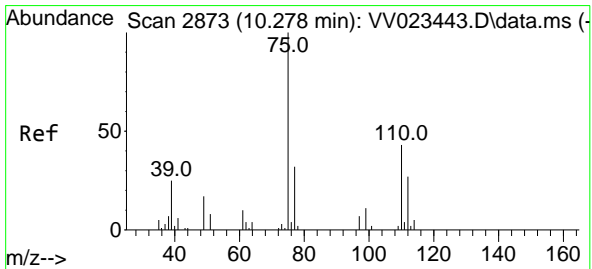
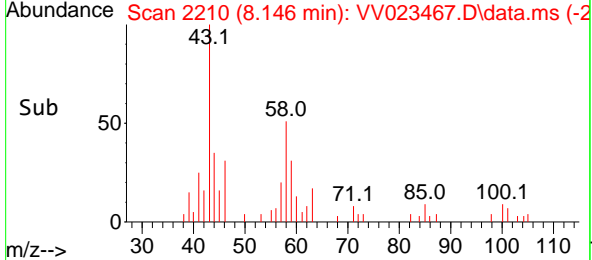
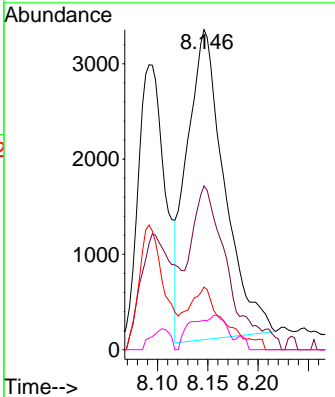
#48
 2-Hexanone
 Concen: 3.304 ug/L
 RT: 8.146 min Scan# 211
 Delta R.T. -0.013 min
 Lab File: VV023467.D
 Acq: 13 Nov 2021 01:37

Instrument : MSVOA_V
 ClientSampleId :

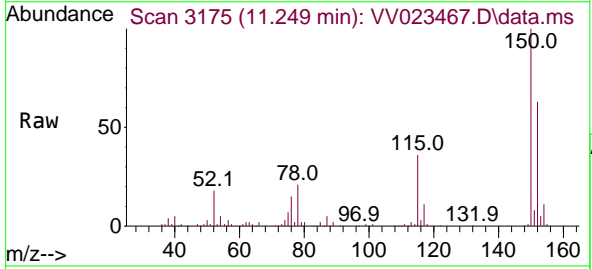


Tgt Ion: 43 Resp: 8408

Ion	Ratio	Lower	Upper
43	100		
58	50.6	43.7	65.5
57	18.6	14.1	21.1
100	10.5	10.2	15.2



#61
 1,2,3-Trichloropropane
 Concen: 1.622 ug/L
 RT: 11.249 min Scan# 3175
 Delta R.T. 0.971 min
 Lab File: VV023467.D
 Acq: 13 Nov 2021 01:37



Tgt Ion: 75 Resp: 5654

Ion	Ratio	Lower	Upper
75	100		
77	33.5	26.6	39.8
110	2.0	31.8	47.6

