

Quantitation Report (Qedit)

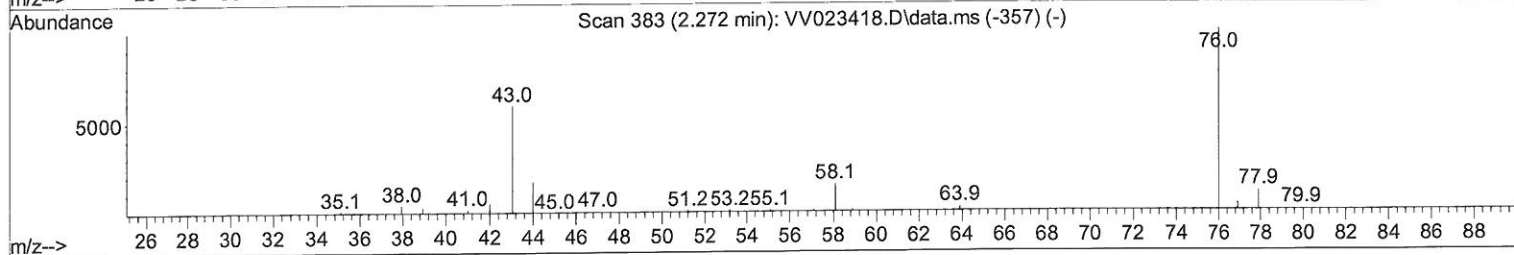
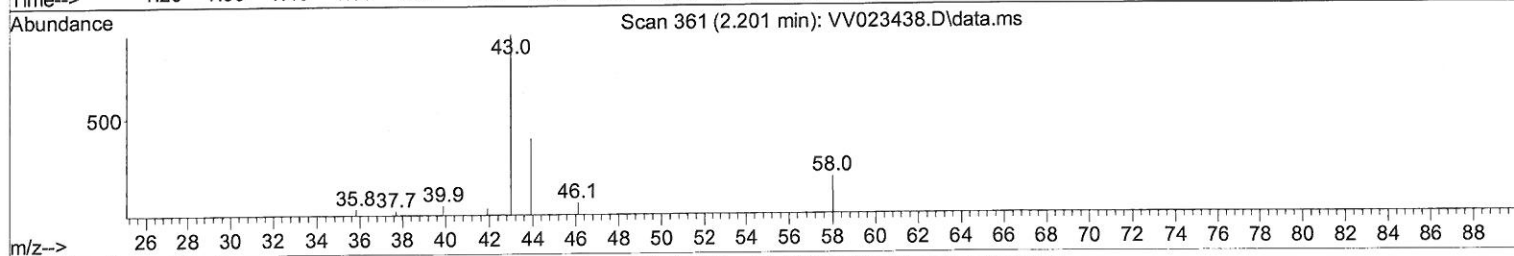
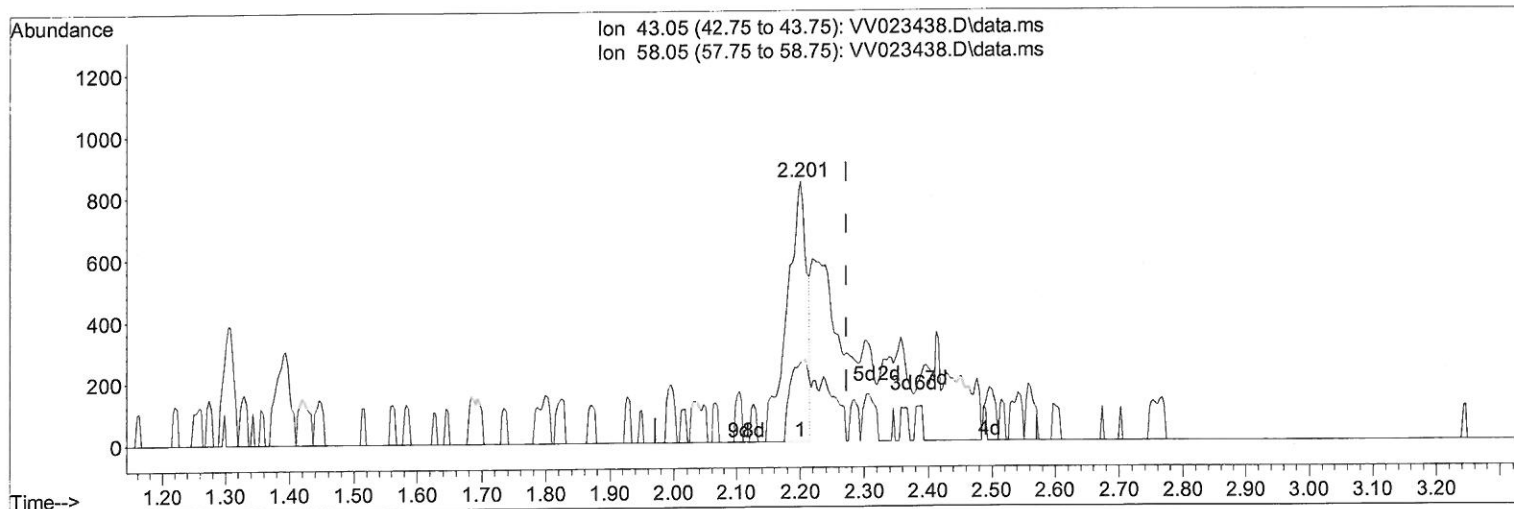
Data Path : Z:\voasrv\HPCHEM1\MSVOA_V\Data\VV111221\
 Data File : VV023438.D
 Acq On : 12 Nov 2021 12:42
 Operator : SY/MD
 Sample : M4580-13
 Misc : 25.0mL/MSVOA_V/WATER
 ALS Vial : 49 Sample Multiplier: 1

Instrument :
 MSVOA_V
 Client Sampled :
 GB8H1

Quant Time: Nov 13 00:12:16 2021
 Quant Method : Z:\voasrv\HPCHEM1\MSVOA_V\Method\SFAMVTR110421WMA.M
 Quant Title : TRACE VOA SFAM1.0
 QLast Update : Fri Nov 12 04:43:24 2021
 Response via : Initial Calibration

Manual Integrations APPROVED

Reviewed By : John Carlone 11/15/2021
 Supervised By : Mahesh Dadoda 11/15/2021



TIC: VV023438.D\data.ms

(13) Acetone (T)

2.201min (-0.071) 2.33 ug/L

response 1776

Ion	Exp%	Act%
43.05	100.00	100.00
58.05	27.70	30.57
0.00	0.00	0.00
0.00	0.00	0.00

Quantitation Report (Qedit)

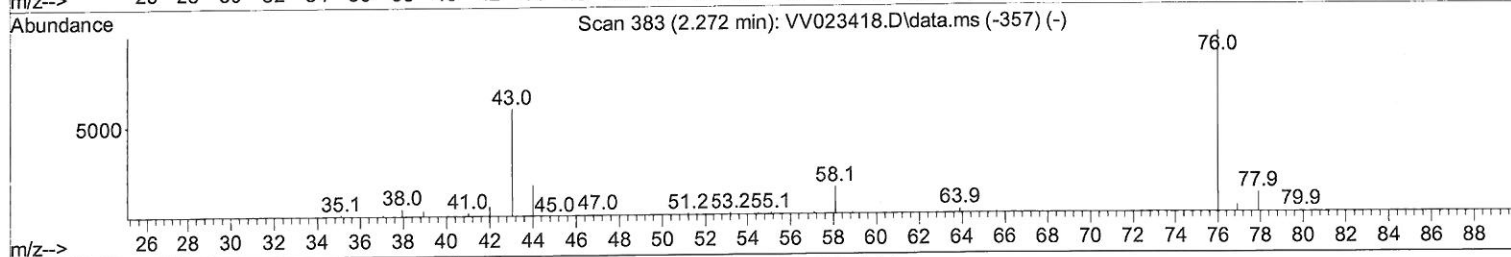
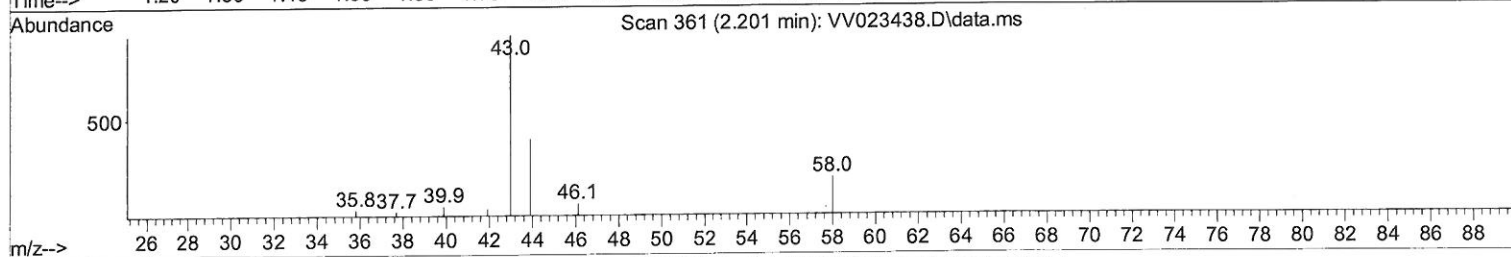
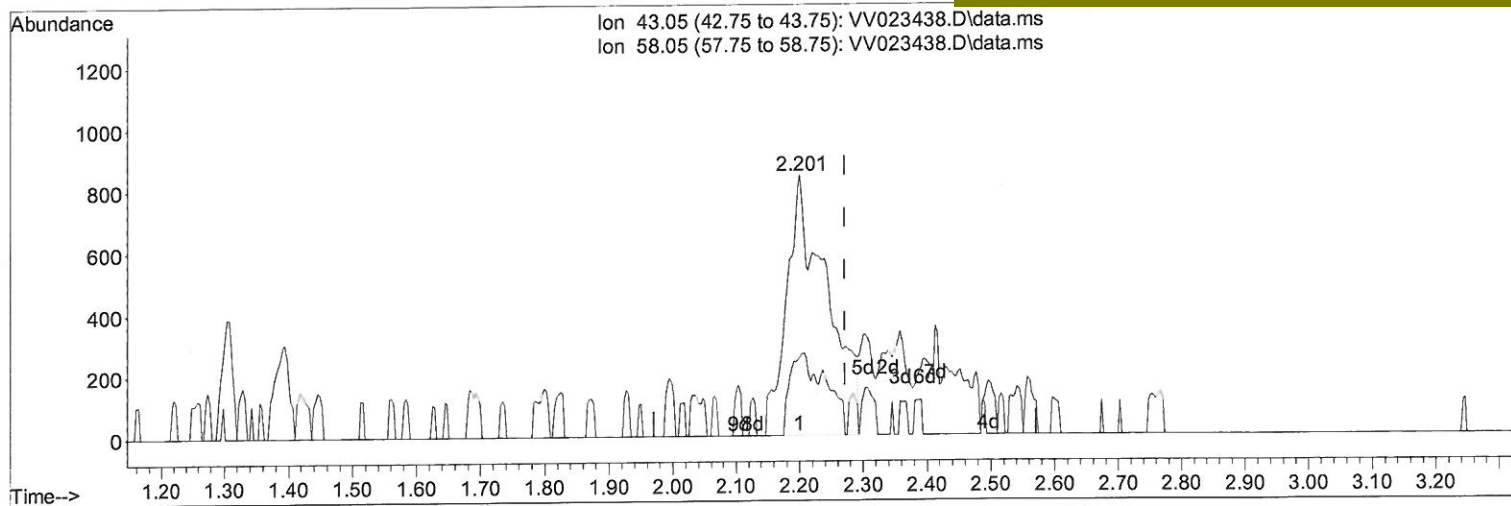
Data Path : Z:\voasrv\HPCHEM1\MSVOA_V\Data\VV111221\
Data File : VV023438.D
Acq On : 12 Nov 2021 12:42
Operator : SY/MD
Sample : M4580-13
Misc : 25.0mL/MSVOA_V/WATER
ALS Vial : 49 Sample Multiplier: 1

Instrument :
MSVOA_V
Client Sampled :
GB8H1

Quant Time: Nov 13 00:12:16 2021
Quant Method : Z:\voasrv\HPCHEM1\MSVOA_V\Method\SFAMVTR110421WMA.M
Quant Title : TRACE VOA SFAM1.0
QLast Update : Fri Nov 12 04:43:24 2021
Response via : Initial Calibration

Manual IntegrationsAPPROVED

Reviewed By :John Carlone 11/15/2021
Supervised By :Mahesh Dadoda 11/15/2021



TIC: VV023438.D\data.ms

(13) Acetone (T)

2.201min (-0.071) 4.84 ug/L m

response 3683

Ion	Exp%	Act%
43.05	100.00	100.00
58.05	27.70	14.74
0.00	0.00	0.00
0.00	0.00	0.00

2/10/2021 SY

Quantitation Report (QT Reviewed)

Data Path : Z:\voasrv\HPCHEM1\MSVOA_V\Data\VW111221\
 Data File : VW023438.D
 Acq On : 12 Nov 2021 12:42
 Operator : SY/MD
 Sample : M4580-13
 Misc : 25.0mL/MSVOA_V/WATER
 ALS Vial : 49 Sample Multiplier: 1

Instrument :
 MSVOA_V
 Client Sampled :
 GB8H1

Quant Time: Nov 13 00:12:16 2021
 Quant Method : Z:\voasrv\HPCHEM1\MSVOA_V\Method\SFAMVTR110421WMA.M
 Quant Title : TRACE VOA SFAM1.0
 QLast Update : Fri Nov 12 04:43:24 2021
 Response via : Initial Calibration

Manual Integrations APPROVED

Reviewed By : John Carlone 11/15/2021
 Supervised By : Mahesh Dadoda 11/15/2021

Compound	R.T.	QIon	Response	Conc	Units	Dev(Min)
Internal Standards						
1) 1,4-Difluorobenzene	5.619	114	115498	5.000	ug/L	0.00
28) Chlorobenzene-d5	8.853	117	117006	5.000	ug/L	0.00
58) 1,4-Dichlorobenzene-d4	11.249	152	49523	5.000	ug/L	0.00
System Monitoring Compounds						
4) Vinyl Chloride-d3	1.304	65	28626	3.956	ug/L	0.00
Spiked Amount 5.000	Range 40 - 130		Recovery =	79.200%		
7) Chloroethane-d5	1.568	69	26522	4.497	ug/L	0.00
Spiked Amount 5.000	Range 65 - 130		Recovery =	90.000%		
11) 1,1-Dichloroethene-d2	2.108	63	43298	3.197	ug/L	0.00
Spiked Amount 5.000	Range 60 - 125		Recovery =	64.000%		
20) 2-Butanone-d5	3.912	46	45352	36.382	ug/L	-0.06
Spiked Amount 50.000	Range 40 - 130		Recovery =	72.760%		
24) Chloroform-d	4.349	84	64881	4.208	ug/L	0.00
Spiked Amount 5.000	Range 70 - 125		Recovery =	84.200%		
26) 1,2-Dichloroethane-d4	5.034	65	32474	4.683	ug/L	0.00
Spiked Amount 5.000	Range 70 - 130		Recovery =	93.600%		
32) Benzene-d6	5.050	84	128192	4.270	ug/L	0.00
Spiked Amount 5.000	Range 70 - 125		Recovery =	85.400%		
36) 1,2-Dichloropropane-d6	6.072	67	39488	4.468	ug/L	0.00
Spiked Amount 5.000	Range 60 - 140		Recovery =	89.400%		
41) Toluene-d8	7.317	98	105304	3.743	ug/L	0.00
Spiked Amount 5.000	Range 70 - 130		Recovery =	74.800%		
43) trans-1,3-Dichloroprop...	7.628	79	13129	3.918	ug/L	0.00
Spiked Amount 5.000	Range 55 - 130		Recovery =	78.400%		
46) 2-Hexanone-d5	8.091	63	41153	33.378	ug/L	-0.02
Spiked Amount 50.000	Range 45 - 130		Recovery =	66.760%		
56) 1,1,2,2-Tetrachloroeth...	10.217	84	25907	4.076	ug/L	0.00
Spiked Amount 5.000	Range 65 - 120		Recovery =	81.600%		
66) 1,2-Dichlorobenzene-d4	11.625	152	40504	4.912	ug/L	0.00
Spiked Amount 5.000	Range 80 - 120		Recovery =	98.200%		
Target Compounds						
13) Acetone	2.201	43	3683m	4.835	ug/L	93
25) Chloroform	4.375	83	11614	0.762	ug/L	88
38) Bromodichloromethane	6.516	83	2440	0.238	ug/L	97
47) Tetrachloroethene	7.976	164	11429	1.516	ug/L	

(#) = qualifier out of range (m) = manual integration (+) = signals summed

Data Path : Z:\voasrv\HPCHEM1\MSVOA_V\Data\VV111221\
Data File : VV023438.D
Acq On : 12 Nov 2021 12:42
Operator : SY/MD
Sample : M4580-13
Misc : 25.0mL/MSVOA_V/WATER
ALS Vial : 49 Sample Multiplier: 1

Instrument :
MSVOA_V
Client Sampled :
GB8H1

Quant Time: Nov 13 00:12:16 2021
Quant Method : Z:\voasrv\HPCHEM1\MSVOA_V\Method\SFAMVTR110421WMA.M
Quant Title : TRACE VOA SFAM1.0
QLast Update : Fri Nov 12 04:43:24 2021
Response via : Initial Calibration

Manual Integrations APPROVED

Reviewed By : John Carlone 11/15/2021
Supervised By : Mahesh Dadoda 11/15/2021

