

Data Path : Z:\voasrv\HPCHEM1\MSVOA_V\Data\VW111221\
 Data File : VV023434.D
 Acq On : 12 Nov 2021 11:07
 Operator : SY/MD
 Sample : M4542-09DL 5X
 Misc : 25.0mL/MSVOA_V/WATER
 ALS Vial : 45 Sample Multiplier: 1

Instrument :
 MSVOA_V
 ClientSampleId :
 BGGF3DL

Quant Time: Nov 13 00:11:26 2021
 Quant Method : Z:\voasrv\HPCHEM1\MSVOA_V\Method\SFAMVTR110421WMA.M
 Quant Title : TRACE VOA SFAM1.0
 QLast Update : Fri Nov 12 04:43:24 2021
 Response via : Initial Calibration

Compound	R.T.	QIon	Response	Conc	Units	Dev(Min)
Internal Standards						
1) 1,4-Difluorobenzene	5.609	114	116045	5.000	ug/L	0.00
28) Chlorobenzene-d5	8.850	117	109921	5.000	ug/L	0.00
58) 1,4-Dichlorobenzene-d4	11.249	152	53015	5.000	ug/L	0.00
System Monitoring Compounds						
4) Vinyl Chloride-d3	1.298	65	26670	3.669	ug/L	0.00
Spiked Amount	5.000	Range 40 - 130	Recovery	=	73.400%	
7) Chloroethane-d5	1.558	69	23287	3.930	ug/L	0.00
Spiked Amount	5.000	Range 65 - 130	Recovery	=	78.600%	
11) 1,1-Dichloroethene-d2	2.098	63	41542	3.052	ug/L	0.00
Spiked Amount	5.000	Range 60 - 125	Recovery	=	61.000%	
20) 2-Butanone-d5	3.963	46	68268	54.507	ug/L	-0.01
Spiked Amount	50.000	Range 40 - 130	Recovery	=	109.020%	
24) Chloroform-d	4.342	84	59791	3.859	ug/L	0.00
Spiked Amount	5.000	Range 70 - 125	Recovery	=	77.200%	
26) 1,2-Dichloroethane-d4	5.031	65	33213	4.767	ug/L	0.00
Spiked Amount	5.000	Range 70 - 130	Recovery	=	95.400%	
32) Benzene-d6	5.037	84	115468	4.094	ug/L	0.00
Spiked Amount	5.000	Range 70 - 125	Recovery	=	81.800%	
36) 1,2-Dichloropropane-d6	6.066	67	38365	4.621	ug/L	-0.01
Spiked Amount	5.000	Range 60 - 140	Recovery	=	92.400%	
41) Toluene-d8	7.310	98	105682	3.999	ug/L	-0.01
Spiked Amount	5.000	Range 70 - 130	Recovery	=	80.000%	
43) trans-1,3-Dichloroprop...	7.622	79	13639	4.332	ug/L	0.00
Spiked Amount	5.000	Range 55 - 130	Recovery	=	86.600%	
46) 2-Hexanone-d5	8.108	63	44709	38.600	ug/L	0.00
Spiked Amount	50.000	Range 45 - 130	Recovery	=	77.200%	
56) 1,1,2,2-Tetrachloroeth...	10.220	84	26859	4.499	ug/L	0.00
Spiked Amount	5.000	Range 65 - 120	Recovery	=	90.000%	
66) 1,2-Dichlorobenzene-d4	11.625	152	42613	4.827	ug/L	0.00
Spiked Amount	5.000	Range 80 - 120	Recovery	=	96.600%	
Target Compounds						
3) Chloromethane	1.230	50	965	0.100	ug/L	96
5) Vinyl chloride	1.301	62	3750	0.390	ug/L	88
8) Chloroethane	1.577	64	953	0.172	ug/L	93
12) 1,1-Dichloroethene	2.105	96	975	0.141	ug/L #	1
19) 1,1-Dichloroethane	3.182	63	17481	1.217	ug/L	97
22) cis-1,2-Dichloroethene	3.902	96	15000	1.832	ug/L #	100
25) Chloroform	4.371	83	5165	0.337	ug/L	87
29) 1,1,1-Trichloroethane	4.596	97	30479	2.283	ug/L	94
34) Trichloroethene	5.902	95	50246	6.150	ug/L	100
42) Toluene	7.387	91	5269	0.160	ug/L	94
47) Tetrachloroethene	7.973	164	2736	0.386	ug/L	92
51) Chlorobenzene	8.882	112	35919	1.644	ug/L	98
54) o-xylene	9.551	106	1123	0.088	ug/L	62
60) Isopropylbenzene	9.931	105	4673	0.154	ug/L	98
63) 1,2,4-Trimethylbenzene	10.915	105	33626	1.339	ug/L	100
65) 1,4-Dichlorobenzene	11.271	146	3862	0.243	ug/L	97
67) 1,2-Dichlorobenzene	11.641	146	5533	0.398	ug/L	95

Data Path : Z:\voasrv\HPCHEM1\MSVOA_V\Data\VV111221\
Data File : VV023434.D
Acq On : 12 Nov 2021 11:07
Operator : SY/MD
Sample : M4542-09DL 5X
Misc : 25.0mL/MSVOA_V/WATER
ALS Vial : 45 Sample Multiplier: 1

Instrument :
MSVOA_V
ClientSampleId :
BGGF3DL

Quant Time: Nov 13 00:11:26 2021
Quant Method : Z:\voasrv\HPCHEM1\MSVOA_V\Method\SFAMVTR110421WMA.M
Quant Title : TRACE VOA SFAM1.0
QLast Update : Fri Nov 12 04:43:24 2021
Response via : Initial Calibration

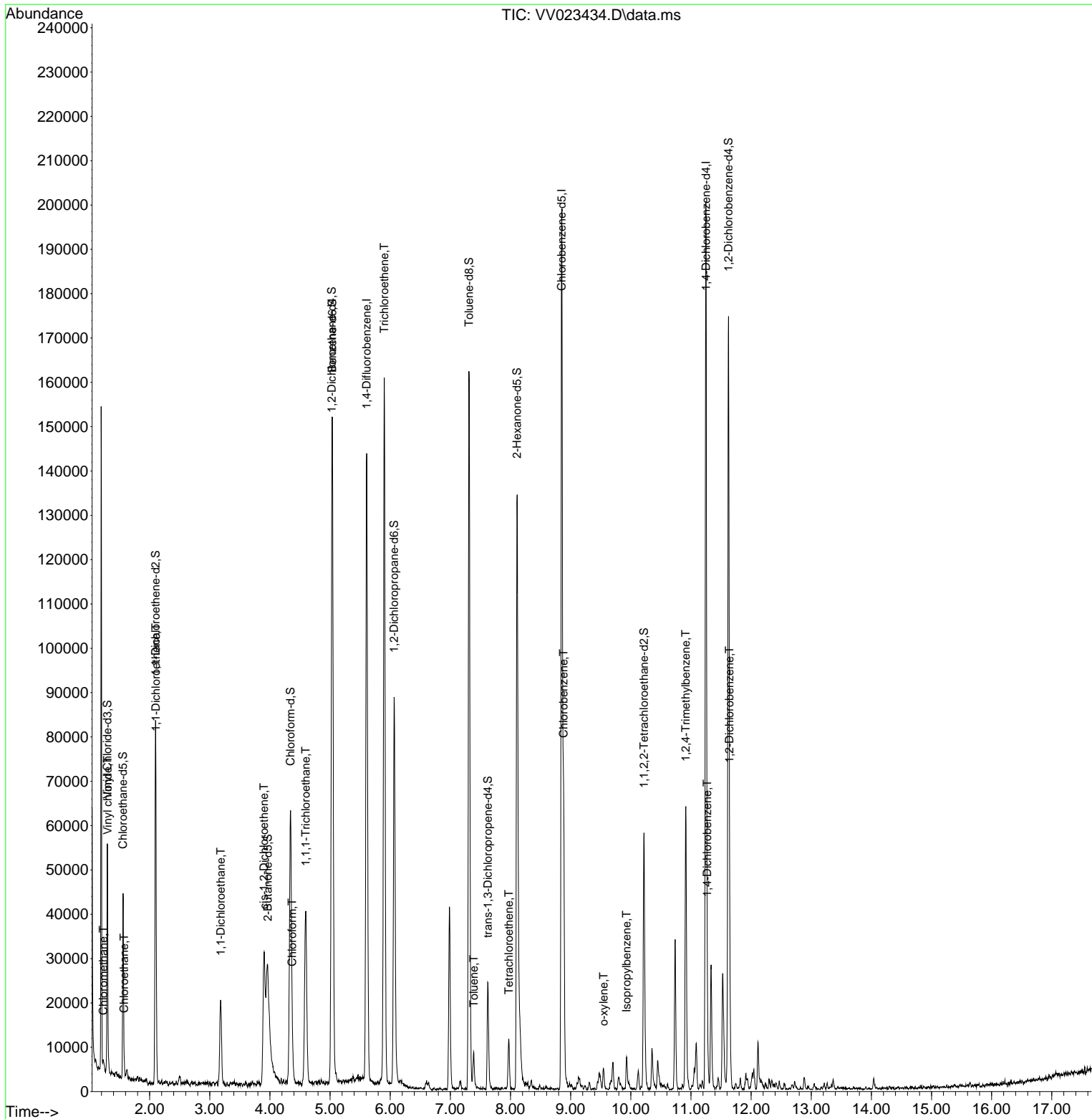
Compound	R.T.	QIon	Response	Conc	Units	Dev(Min)

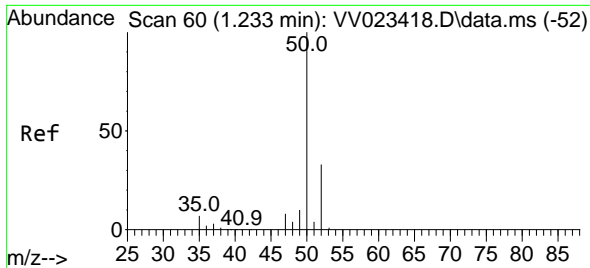
(#) = qualifier out of range (m) = manual integration (+) = signals summed						

Data Path : Z:\voasrv\HPCHEM1\MSVOA_V\Data\VV111221\
 Data File : VV023434.D
 Acq On : 12 Nov 2021 11:07
 Operator : SY/MD
 Sample : M4542-09DL 5X
 Misc : 25.0mL/MSVOA_V/WATER
 ALS Vial : 45 Sample Multiplier: 1

Instrument :
 MSVOA_V
 ClientSampleId :
 BGGF3DL

Quant Time: Nov 13 00:11:26 2021
 Quant Method : Z:\voasrv\HPCHEM1\MSVOA_V\Method\SFAMVTR110421WMA.M
 Quant Title : TRACE VOA SFAM1.0
 QLast Update : Fri Nov 12 04:43:24 2021
 Response via : Initial Calibration

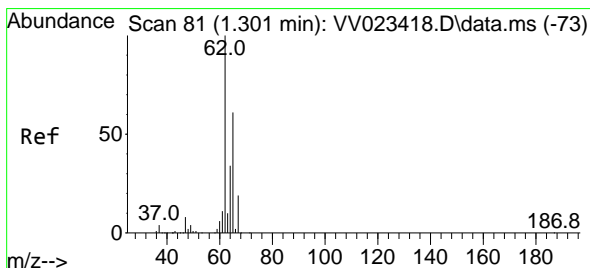
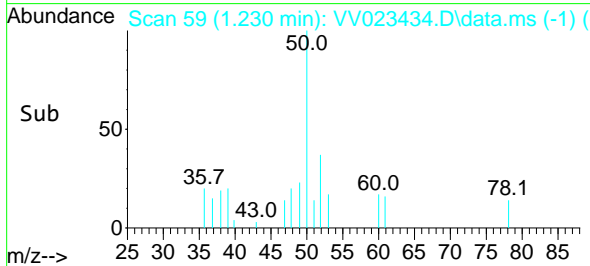
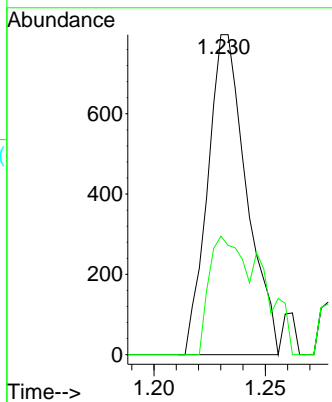
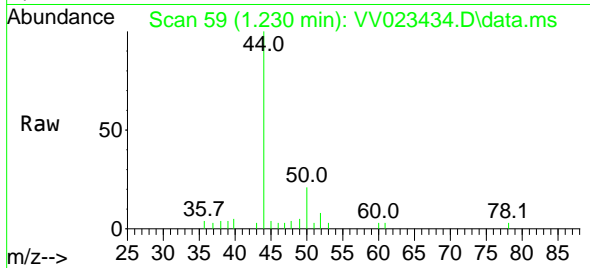




#3
 Chloromethane
 Concen: 0.100 ug/L
 RT: 1.230 min Scan# 51
 Delta R.T. -0.003 min
 Lab File: VV023434.D
 Acq: 12 Nov 2021 11:07

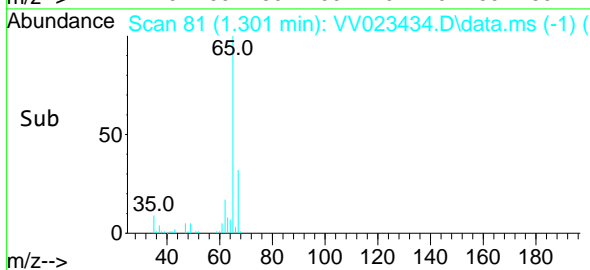
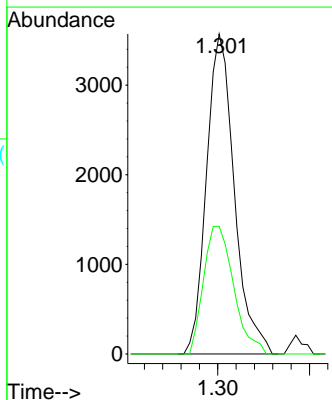
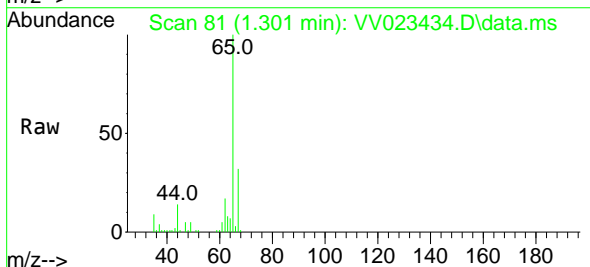
Instrument : MSVOA_V
 ClientSampleId : BGGF3DL

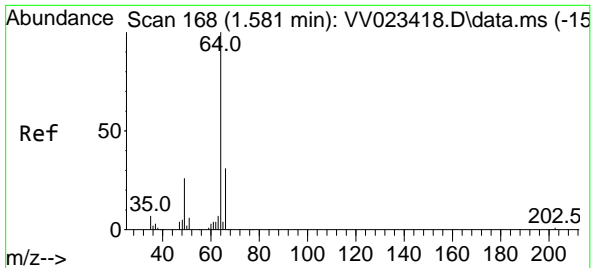
Tgt Ion: 50 Resp: 965
 Ion Ratio Lower Upper
 50 100
 52 37.0 24.3 45.1



#5
 Vinyl chloride
 Concen: 0.390 ug/L
 RT: 1.301 min Scan# 81
 Delta R.T. -0.000 min
 Lab File: VV023434.D
 Acq: 12 Nov 2021 11:07

Tgt Ion: 62 Resp: 3750
 Ion Ratio Lower Upper
 62 100
 64 39.9 23.1 42.9

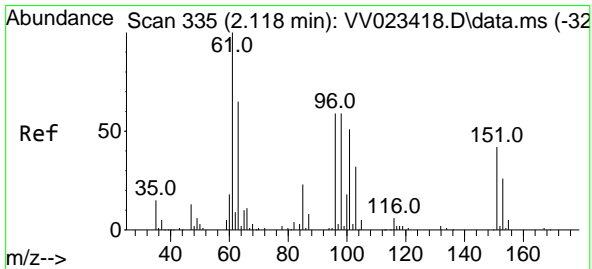
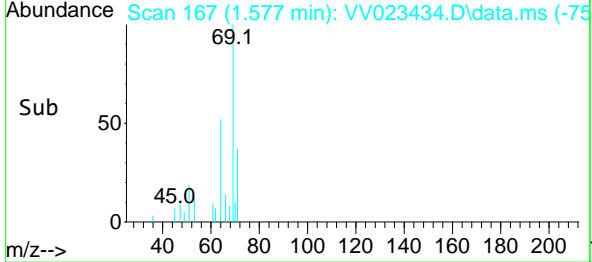
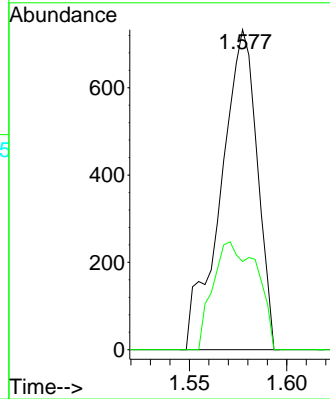
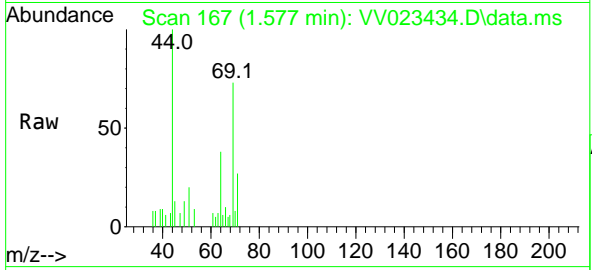




#8
 Chloroethane
 Concen: 0.172 ug/L
 RT: 1.577 min Scan# 10
 Delta R.T. -0.003 min
 Lab File: VV023434.D
 Acq: 12 Nov 2021 11:07

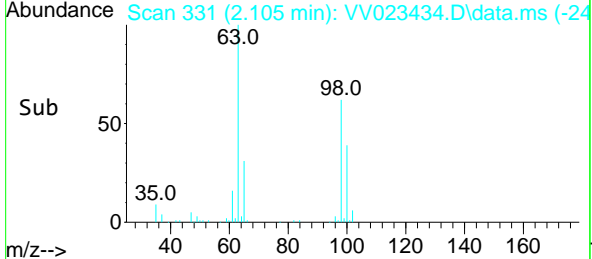
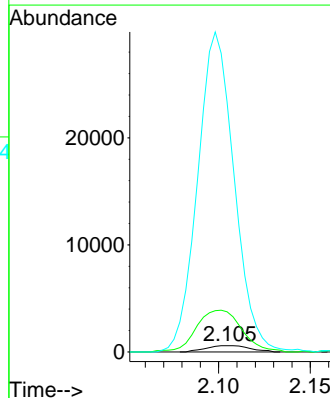
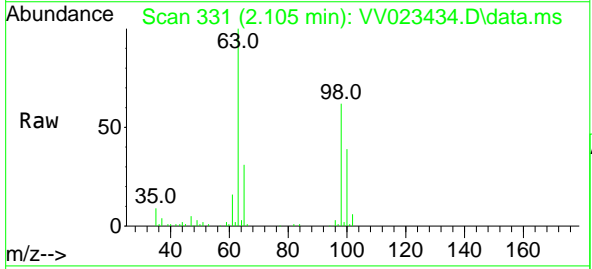
Instrument : MSVOA_V
 ClientSampleId : BGGF3DL

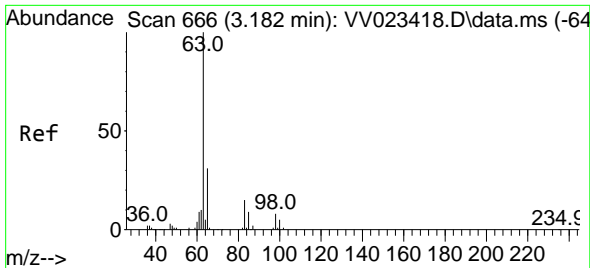
Tgt Ion: 64 Resp: 953
 Ion Ratio Lower Upper
 64 100
 66 27.6 22.1 41.1



#12
 1,1-Dichloroethene
 Concen: 0.141 ug/L
 RT: 2.105 min Scan# 331
 Delta R.T. -0.013 min
 Lab File: VV023434.D
 Acq: 12 Nov 2021 11:07

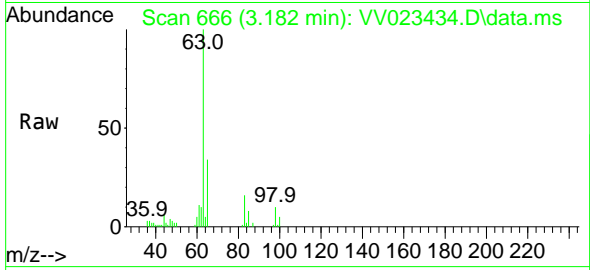
Tgt Ion: 96 Resp: 975
 Ion Ratio Lower Upper
 96 100
 61 642.4 121.5 225.7#
 63 3989.1 99.6 185.0#





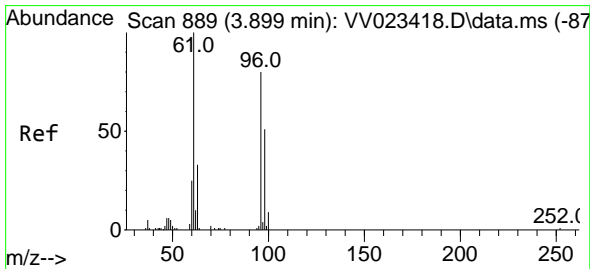
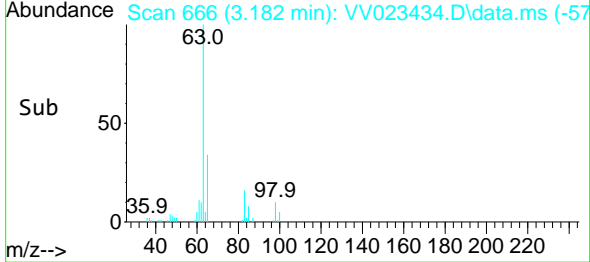
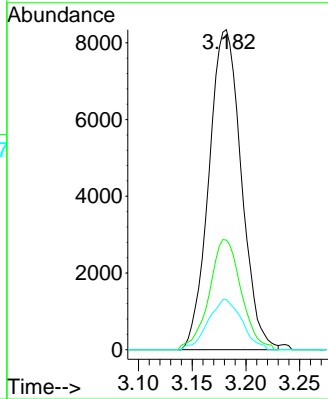
#19
 1,1-Dichloroethane
 Concen: 1.217 ug/L
 RT: 3.182 min Scan# 60
 Delta R.T. -0.000 min
 Lab File: VV023434.D
 Acq: 12 Nov 2021 11:07

Instrument : MSVOA_V
 ClientSampleId : BGGF3DL



Tgt Ion: 63 Resp: 17481

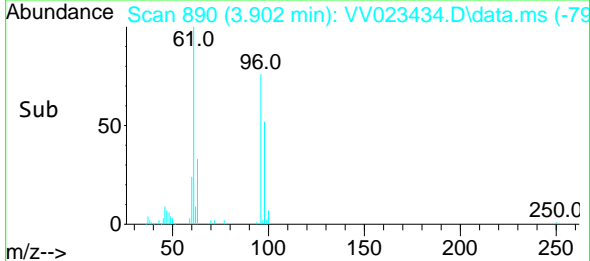
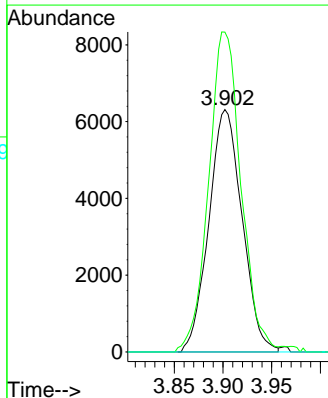
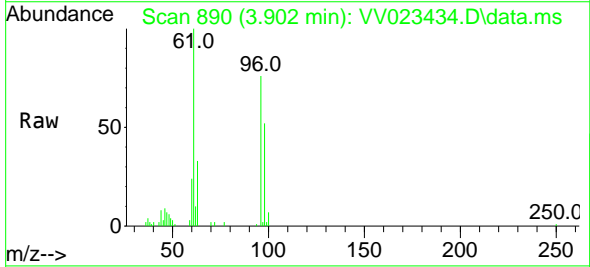
Ion	Ratio	Lower	Upper
63	100		
65	34.2	22.6	42.0
83	15.7	11.1	20.7

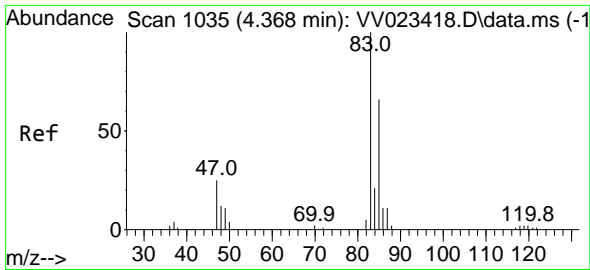


#22
 cis-1,2-Dichloroethene
 Concen: 1.832 ug/L
 RT: 3.902 min Scan# 890
 Delta R.T. 0.003 min
 Lab File: VV023434.D
 Acq: 12 Nov 2021 11:07

Tgt Ion: 96 Resp: 15000

Ion	Ratio	Lower	Upper
96	100		
61	131.9	92.3	171.3
68	0.0	0.4	0.8

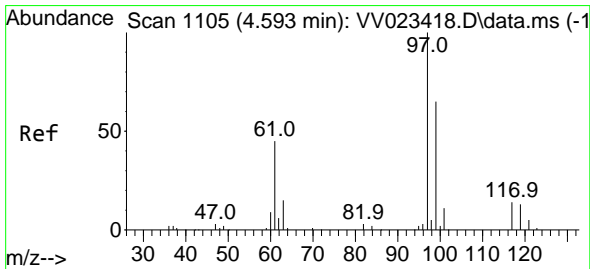
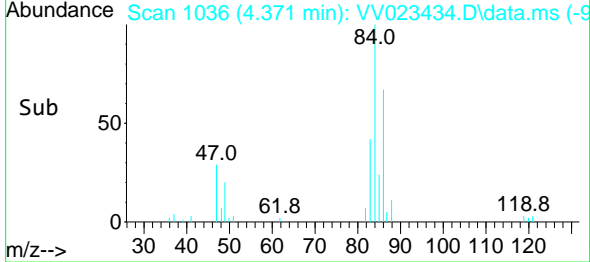
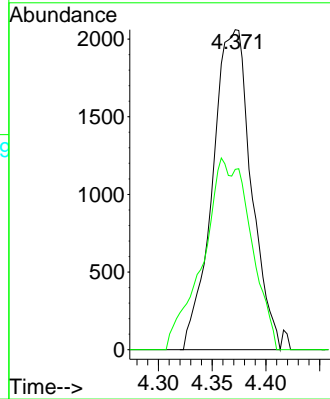
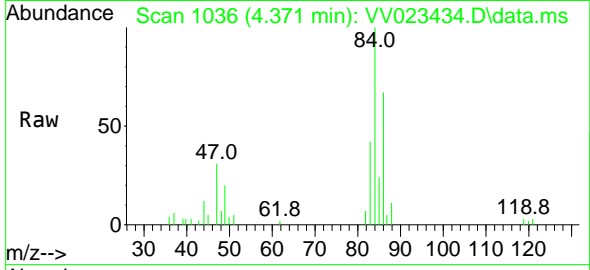




#25
 Chloroform
 Concen: 0.337 ug/L
 RT: 4.371 min Scan# 1036
 Delta R.T. 0.003 min
 Lab File: VV023434.D
 Acq: 12 Nov 2021 11:07

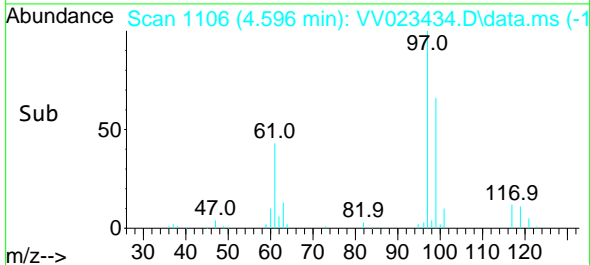
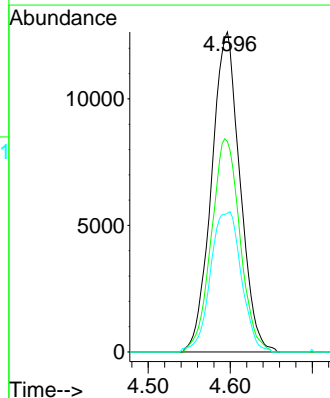
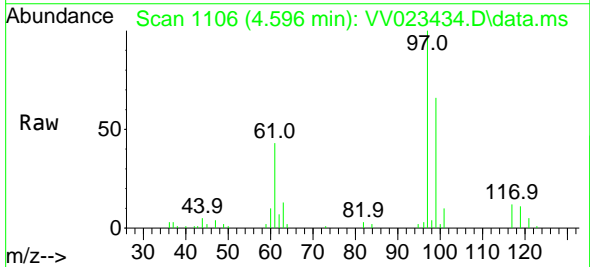
Instrument :
 MSVOA_V
 ClientSampleId :
 BGGF3DL

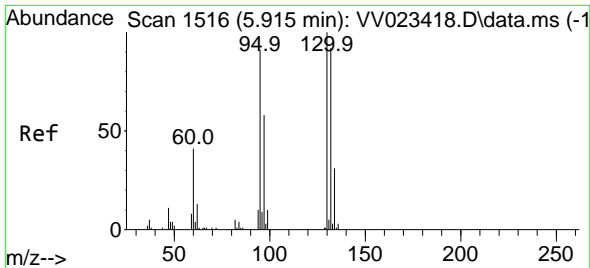
Tgt Ion: 83 Resp: 5165
 Ion Ratio Lower Upper
 83 100
 85 56.3 46.8 86.8



#29
 1,1,1-Trichloroethane
 Concen: 2.283 ug/L
 RT: 4.596 min Scan# 1106
 Delta R.T. 0.003 min
 Lab File: VV023434.D
 Acq: 12 Nov 2021 11:07

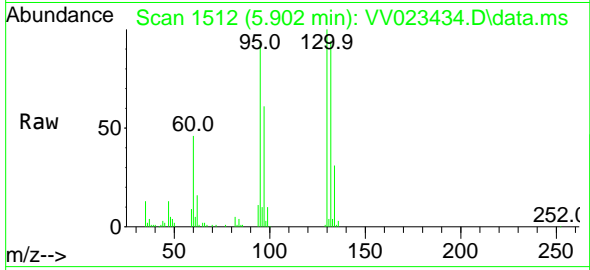
Tgt Ion: 97 Resp: 30479
 Ion Ratio Lower Upper
 97 100
 99 67.0 51.0 76.4
 61 47.4 34.1 51.1



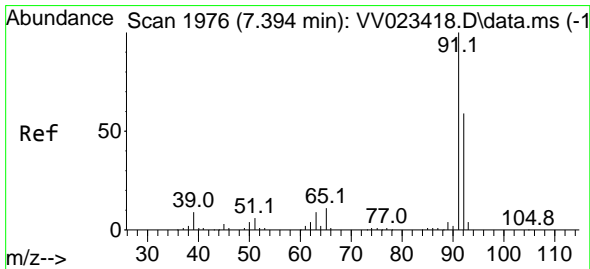
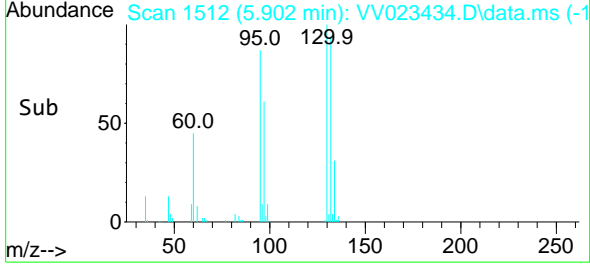
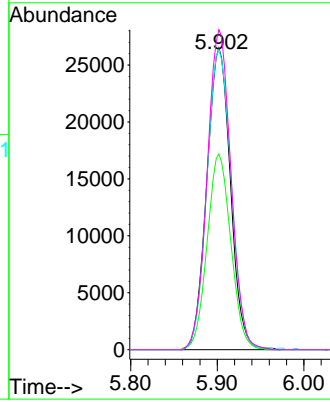


#34
 Trichloroethene
 Concen: 6.150 ug/L
 RT: 5.902 min Scan# 11
 Delta R.T. -0.013 min
 Lab File: VV023434.D
 Acq: 12 Nov 2021 11:07

Instrument : MSVOA_V
 Client Sample Id : BGGF3DL

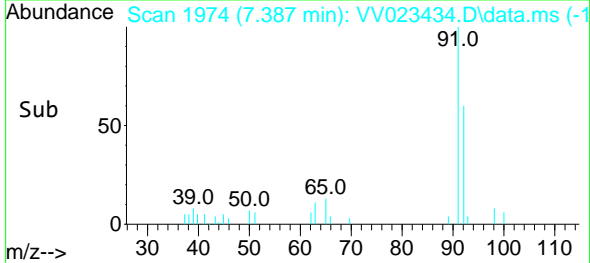
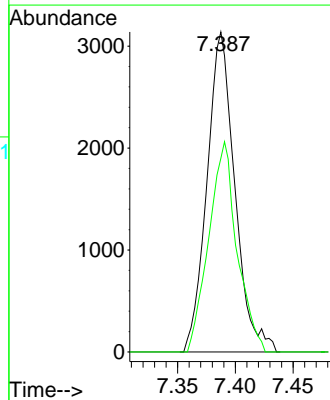
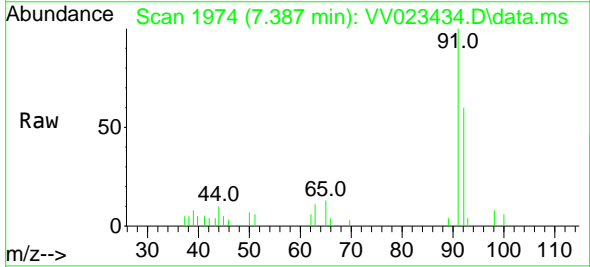


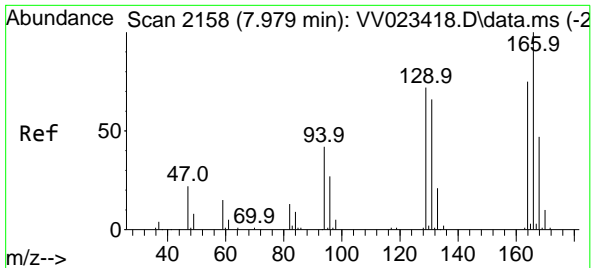
Tgt Ion: 95 Resp: 50246
 Ion Ratio Lower Upper
 95 100
 97 64.9 45.0 83.6
 132 99.5 69.7 129.4
 130 106.1 73.7 136.9



#42
 Toluene
 Concen: 0.160 ug/L
 RT: 7.387 min Scan# 1974
 Delta R.T. -0.006 min
 Lab File: VV023434.D
 Acq: 12 Nov 2021 11:07

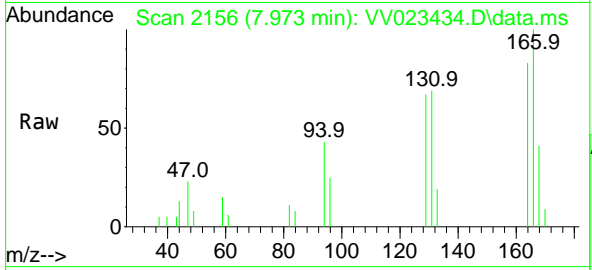
Tgt Ion: 91 Resp: 5269
 Ion Ratio Lower Upper
 91 100
 92 60.5 39.3 72.9



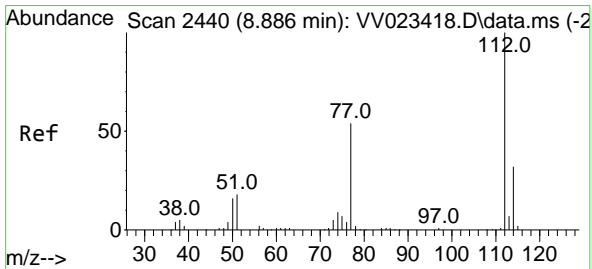
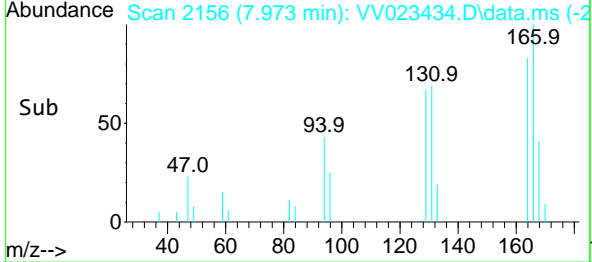
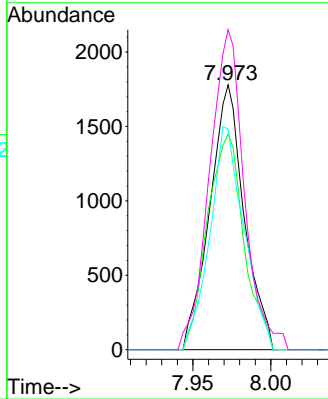


#47
 Tetrachloroethene
 Concen: 0.386 ug/L
 RT: 7.973 min Scan# 2158
 Delta R.T. -0.006 min
 Lab File: VV023434.D
 Acq: 12 Nov 2021 11:07

Instrument : MSVOA_V
 ClientSampleId : BGGF3DL

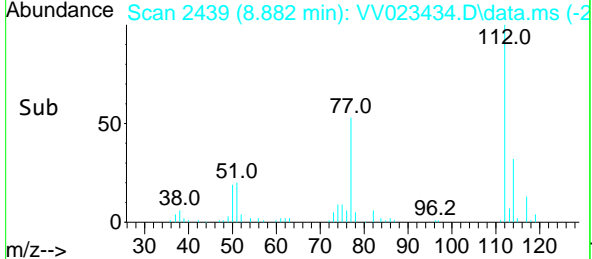
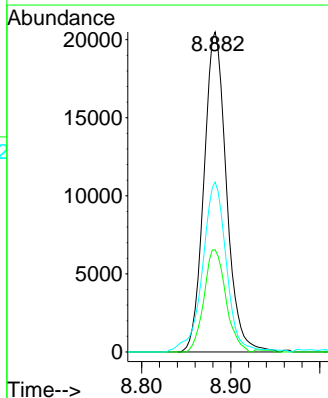
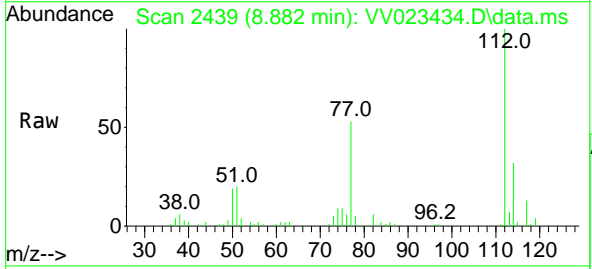


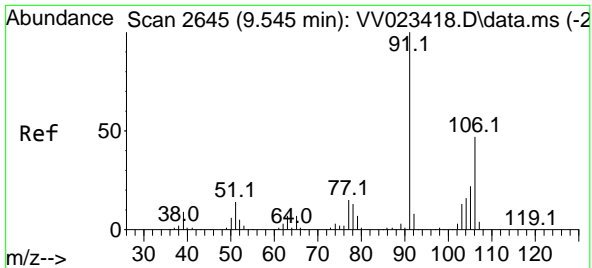
Tgt Ion:164 Resp: 2736
 Ion Ratio Lower Upper
 164 100
 129 81.5 64.0 119.0
 131 83.2 63.4 117.8
 166 120.9 89.3 165.9



#51
 Chlorobenzene
 Concen: 1.644 ug/L
 RT: 8.882 min Scan# 2439
 Delta R.T. -0.003 min
 Lab File: VV023434.D
 Acq: 12 Nov 2021 11:07

Tgt Ion:112 Resp: 35919
 Ion Ratio Lower Upper
 112 100
 114 31.9 22.0 40.8
 77 53.1 44.4 66.6

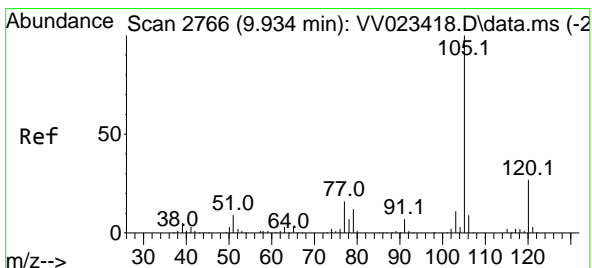
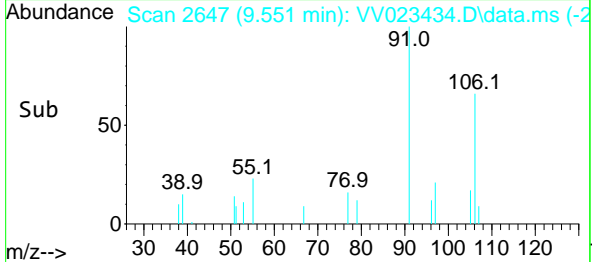
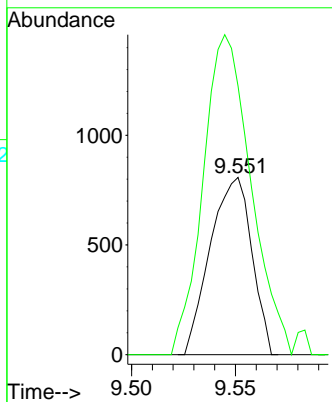
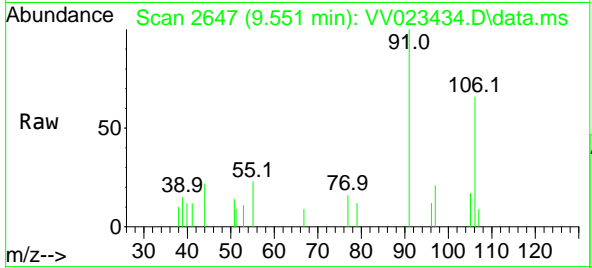




#54
 o-xylene
 Concen: 0.088 ug/L
 RT: 9.551 min Scan# 20
 Delta R.T. 0.006 min
 Lab File: VV023434.D
 Acq: 12 Nov 2021 11:07

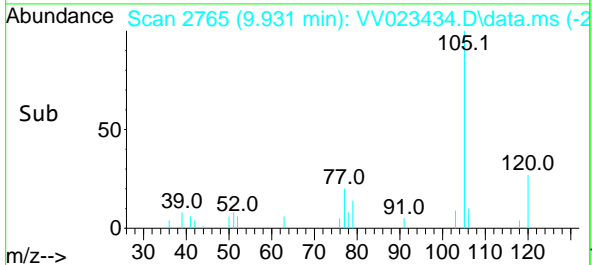
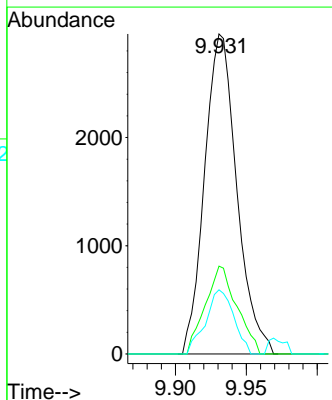
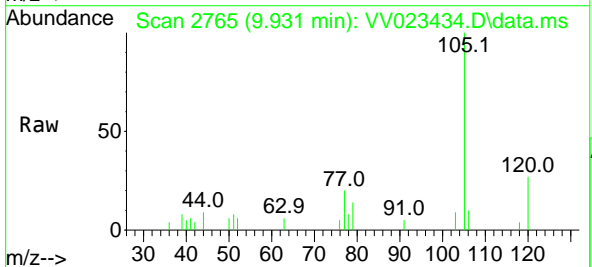
Instrument :
 MSVOA_V
 ClientSampleId :
 BGGF3DL

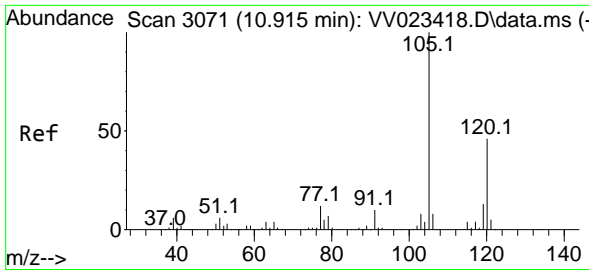
Tgt Ion:106 Resp: 1123
 Ion Ratio Lower Upper
 106 100
 91 151.6 148.3 275.5



#60
 Isopropylbenzene
 Concen: 0.154 ug/L
 RT: 9.931 min Scan# 2765
 Delta R.T. -0.003 min
 Lab File: VV023434.D
 Acq: 12 Nov 2021 11:07

Tgt Ion:105 Resp: 4673
 Ion Ratio Lower Upper
 105 100
 120 26.9 21.7 32.5
 77 17.5 12.6 19.0

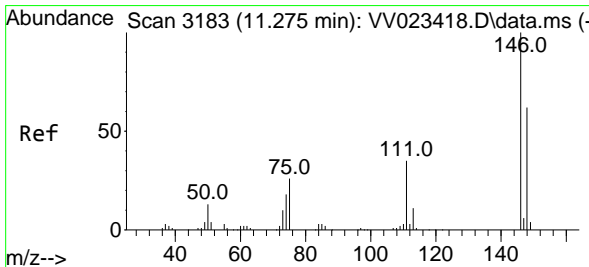
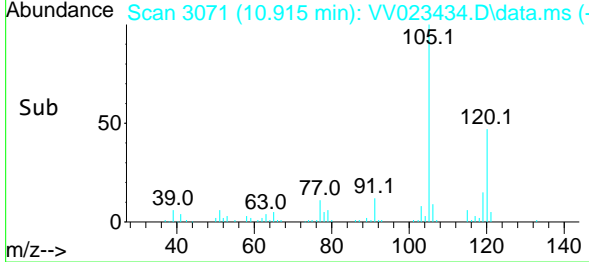
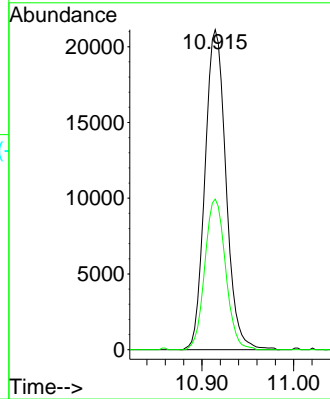
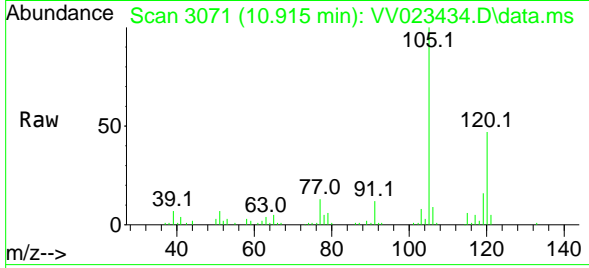




#63
 1,2,4-Trimethylbenzene
 Concen: 1.339 ug/L
 RT: 10.915 min Scan# 3071
 Delta R.T. -0.000 min
 Lab File: VV023434.D
 Acq: 12 Nov 2021 11:07

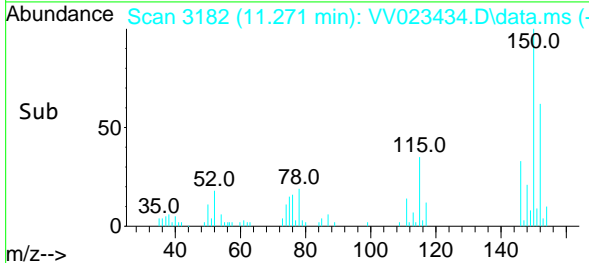
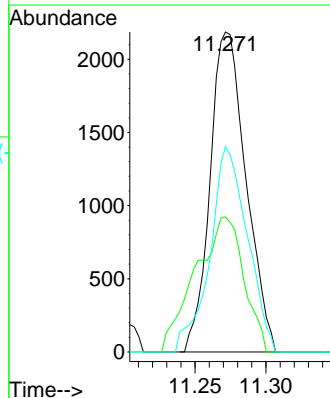
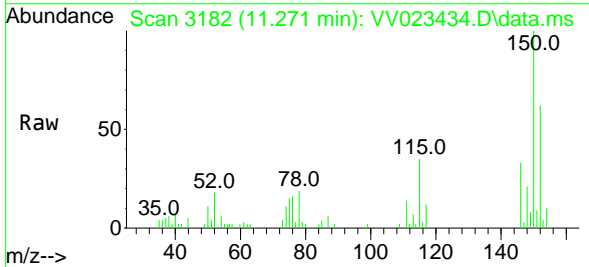
Instrument : MSVOA_V
 Client SampleId : BGGF3DL

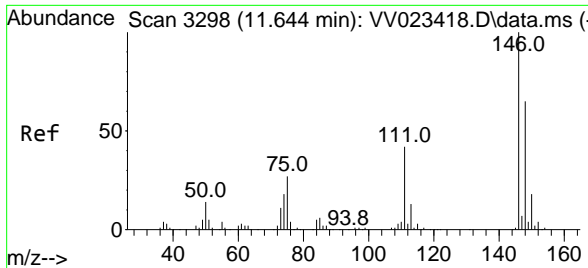
Tgt Ion:105 Resp: 33626
 Ion Ratio Lower Upper
 105 100
 120 46.5 37.4 56.2



#65
 1,4-Dichlorobenzene
 Concen: 0.243 ug/L
 RT: 11.271 min Scan# 3182
 Delta R.T. -0.003 min
 Lab File: VV023434.D
 Acq: 12 Nov 2021 11:07

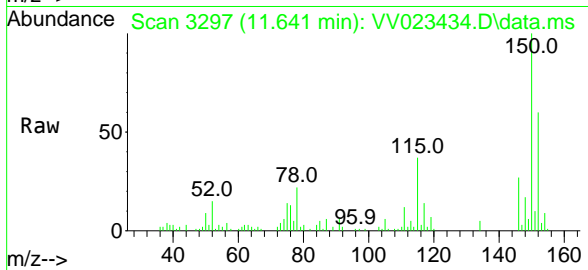
Tgt Ion:146 Resp: 3862
 Ion Ratio Lower Upper
 146 100
 111 42.2 26.2 48.8
 148 64.2 44.4 82.5





#67
 1,2-Dichlorobenzene
 Concen: 0.398 ug/L
 RT: 11.641 min Scan# 31
 Delta R.T. -0.003 min
 Lab File: VV023434.D
 Acq: 12 Nov 2021 11:07

Instrument :
 MSVOA_V
 ClientSampleId :
 BGGF3DL



Tgt Ion:146 Resp: 5533

Ion	Ratio	Lower	Upper
146	100		
111	44.2	31.6	47.4
148	61.7	51.0	76.6

