

Data Path : Z:\voasrv\HPCHEM1\MSVOA_V\Data\VW111221\
 Data File : VV023451.D
 Acq On : 12 Nov 2021 19:12
 Operator : SY/MD
 Sample : M4581-06
 Misc : 25.0mL/MSVOA_V/WATER
 ALS Vial : 10 Sample Multiplier: 1

Instrument :
 MSVOA_V
ClientSampleId :
 GB8J3

Quant Time: Nov 13 01:57:55 2021
 Quant Method : Z:\voasrv\HPCHEM1\MSVOA_V\Method\SFAMVTR110421WMA.M
 Quant Title : TRACE VOA SFAM1.0
 QLast Update : Sat Nov 13 01:39:11 2021
 Response via : Initial Calibration

Compound	R.T.	QIon	Response	Conc	Units	Dev(Min)

Internal Standards						
1) 1,4-Difluorobenzene	5.613	114	118672	5.000	ug/L	-0.02
28) Chlorobenzene-d5	8.854	117	113847	5.000	ug/L	0.00
58) 1,4-Dichlorobenzene-d4	11.249	152	46636	5.000	ug/L	0.00
System Monitoring Compounds						
4) Vinyl Chloride-d3	1.298	65	28138	3.785	ug/L	0.00
Spiked Amount	5.000	Range 40 - 130	Recovery	=	75.600%	
7) Chloroethane-d5	1.558	69	24759	4.086	ug/L	-0.02
Spiked Amount	5.000	Range 65 - 130	Recovery	=	81.800%	
11) 1,1-Dichloroethene-d2	2.098	63	44985	3.232	ug/L	-0.02
Spiked Amount	5.000	Range 60 - 125	Recovery	=	64.600%	
20) 2-Butanone-d5	3.947	46	82183	64.165	ug/L	-0.04
Spiked Amount	50.000	Range 40 - 130	Recovery	=	128.340%	
24) Chloroform-d	4.339	84	66155	4.175	ug/L	-0.02
Spiked Amount	5.000	Range 70 - 125	Recovery	=	83.600%	
26) 1,2-Dichloroethane-d4	5.031	65	40135	5.633	ug/L	-0.02
Spiked Amount	5.000	Range 70 - 130	Recovery	=	112.600%	
32) Benzene-d6	5.037	84	156276	5.350	ug/L	-0.02
Spiked Amount	5.000	Range 70 - 125	Recovery	=	107.000%	
36) 1,2-Dichloropropane-d6	6.069	67	46133	5.365	ug/L	-0.03
Spiked Amount	5.000	Range 60 - 140	Recovery	=	107.400%	
41) Toluene-d8	7.314	98	117112	4.278	ug/L	-0.01
Spiked Amount	5.000	Range 70 - 130	Recovery	=	85.600%	
43) trans-1,3-Dichloroprop...	7.625	79	14492	4.445	ug/L	0.00
Spiked Amount	5.000	Range 55 - 130	Recovery	=	88.800%	
46) 2-Hexanone-d5	8.104	63	50504	42.099	ug/L	0.00
Spiked Amount	50.000	Range 45 - 130	Recovery	=	84.200%	
56) 1,1,2,2-Tetrachloroeth...	10.217	84	29817	4.822	ug/L	0.00
Spiked Amount	5.000	Range 65 - 120	Recovery	=	96.400%	
66) 1,2-Dichlorobenzene-d4	11.625	152	44535	5.735	ug/L	0.00
Spiked Amount	5.000	Range 80 - 120	Recovery	=	114.800%	

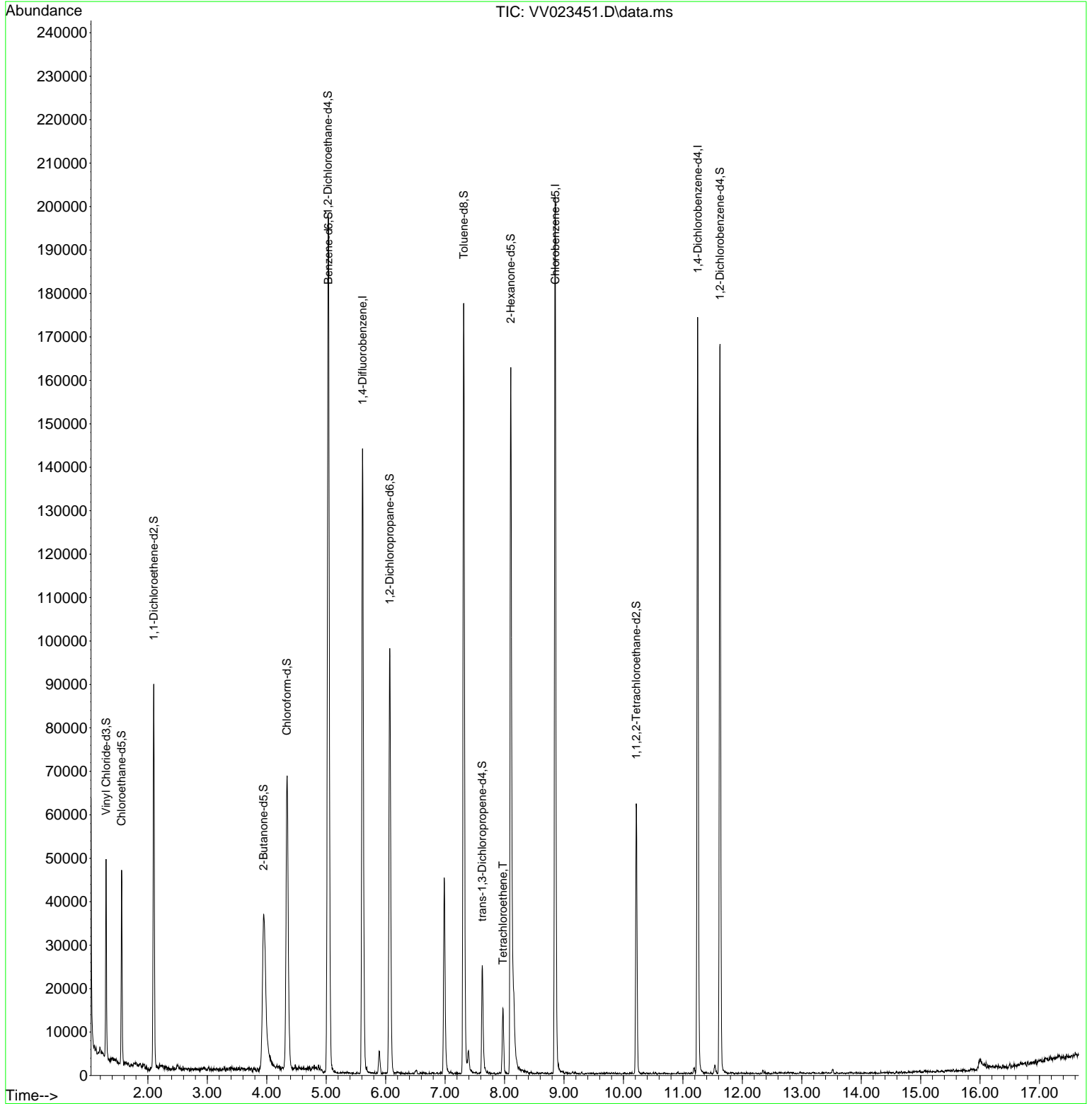
Target Compounds						Qvalue
47) Tetrachloroethene	7.973	164	3638	0.496	ug/L	98

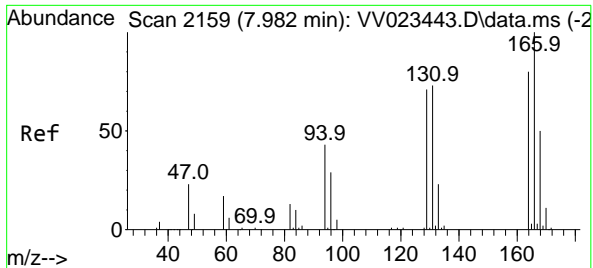
(#) = qualifier out of range (m) = manual integration (+) = signals summed

Data Path : Z:\voasrv\HPCHEM1\MSVOA_V\Data\VV111221\
 Data File : VV023451.D
 Acq On : 12 Nov 2021 19:12
 Operator : SY/MD
 Sample : M4581-06
 Misc : 25.0mL/MSVOA_V/WATER
 ALS Vial : 10 Sample Multiplier: 1

Instrument :
 MSVOA_V
 ClientSampleId :
 GB8J3

Quant Time: Nov 13 01:57:55 2021
 Quant Method : Z:\voasrv\HPCHEM1\MSVOA_V\Method\SFAMVTR110421WMA.M
 Quant Title : TRACE VOA SFAM1.0
 QLast Update : Sat Nov 13 01:39:11 2021
 Response via : Initial Calibration





#47
 Tetrachloroethene
 Concen: 0.496 ug/L
 RT: 7.973 min Scan# 21
 Delta R.T. -0.010 min
 Lab File: VV023451.D
 Acq: 12 Nov 2021 19:12

Instrument : MSVOA_V
 ClientSampleId : GB8J3

Tgt Ion:164 Resp: 3638

Ion	Ratio	Lower	Upper
164	100		
129	90.0	64.0	119.0
131	87.4	63.4	117.8
166	130.5	89.3	165.9

