

Data Path : Z:\voasrv\HPCHEM1\MSVOA_V\Data\VW111323\
 Data File : VW032940.D
 Acq On : 13 Nov 2023 18:34
 Operator : SY/MD
 Sample : 05296-13
 Misc : 6.08gm/5mL/100uL/5mL/MSVOA_V/MEOH
 ALS Vial : 9 Sample Multiplier: 1

Instrument :
 MSVOA_V
 ClientSampleId :
 BH3S8

Integration Parameters: LSCINT.P

Integrator: RTE
 Smoothing : OFF Filtering: 5
 Sampling : 1 Min Area: 0 % of largest Peak
 Start Thrs: 0.2 Max Peaks: 100
 Stop Thrs : 0 Peak Location: TOP

If leading or trailing edge < 100 prefer < Baseline drop else tangent >
 Peak separation: 5

Method : Z:\voasrv\HPCHEM1\MSVOA_V\Method\SFAMVLM111323WMA.M
 Title : VOC Analysis

Signal : TIC: VW032940.D\data.ms

peak #	R.T. min	first scan	max scan	last scan	PK TY	peak height	corr. area	corr. % max.	% of total
1	1.278	68	74	86	rBV	238508	252195	14.88%	1.811%
2	1.523	143	150	170	rVB	201758	257245	15.18%	1.847%
3	2.056	306	316	331	rBV	421320	608025	35.88%	4.366%
4	2.297	389	391	396	rVB6	1235	978	0.06%	0.007%
5	2.346	404	406	410	rBV5	1126	1010	0.06%	0.007%
6	2.558	457	472	482	rBV	13081	29283	1.73%	0.210%
7	2.728	522	525	528	rBV5	2161	1504	0.09%	0.011%
8	2.886	572	574	577	rVB3	1830	1051	0.06%	0.008%
9	3.014	611	614	616	rBV4	2068	1668	0.10%	0.012%
10	3.072	629	632	635	rBV5	1835	1365	0.08%	0.010%
11	3.117	642	646	652	rBV8	2417	1966	0.12%	0.014%
12	3.169	659	662	665	rVB4	1639	1115	0.07%	0.008%
13	3.195	665	670	673	rVB7	1384	1169	0.07%	0.008%
14	3.227	676	680	683	rBV6	1920	1578	0.09%	0.011%
15	3.317	706	708	711	rBV4	1583	1128	0.07%	0.008%
16	3.436	743	745	750	rVB5	1909	1053	0.06%	0.008%
17	3.519	768	771	773	rBV4	2432	1429	0.08%	0.010%
18	3.532	773	775	778	rVV4	1887	1215	0.07%	0.009%
19	3.548	778	780	782	rVV3	2082	1343	0.08%	0.010%
20	3.587	789	792	795	rVV4	2437	1931	0.11%	0.014%
21	3.648	807	811	816	rBV9	2097	2553	0.15%	0.018%
22	3.680	819	821	824	rVB4	2294	1273	0.08%	0.009%
23	3.696	824	826	829	rBV3	1975	1016	0.06%	0.007%
24	3.783	844	853	881	rBV	82096	227005	13.40%	1.630%
25	4.175	970	975	979	rBV7	1829	1598	0.09%	0.011%
26	4.249	982	998	1029	rVV	251394	646027	38.13%	4.638%
27	4.371	1032	1036	1038	rBV5	1685	1450	0.09%	0.010%
28	4.629	1114	1116	1120	rVB4	2048	1122	0.07%	0.008%
29	4.957	1201	1218	1248	rBV2	588537	1561624	92.16%	11.212%
30	5.259	1308	1312	1315	rBV6	1341	1082	0.06%	0.008%
31	5.374	1344	1348	1351	rVB6	1440	1294	0.08%	0.009%
32	5.532	1382	1397	1424	rBV	448234	934421	55.15%	6.709%
33	5.989	1525	1539	1563	rBV	334145	695017	41.02%	4.990%
34	6.217	1606	1610	1612	rBV4	2307	1591	0.09%	0.011%
35	6.352	1647	1652	1657	rVV8	2088	2326	0.14%	0.017%
36	6.432	1674	1677	1681	rBV4	2185	1691	0.10%	0.012%

Data Path : Z:\voasrv\HPCHEM1\MSVOA_V\Data\VW111323\
 Data File : VV032940.D
 Acq On : 13 Nov 2023 18:34
 Operator : SY/MD
 Sample : 05296-13
 Misc : 6.08gm/5mL/100uL/5mL/MSVOA_V/MEOH
 ALS Vial : 9 Sample Multiplier: 1

Instrument :
 MSVOA_V
 ClientSampleId :
 BH3S8

Integration Parameters: LSCINT.P

Integrator: RTE
 Smoothing : OFF
 Sampling : 1
 Start Thrs: 0.2
 Stop Thrs : 0

Filtering: 5
 Min Area: 0 % of largest Peak
 Max Peaks: 100
 Peak Location: TOP

If leading or trailing edge < 100 prefer < Baseline drop else tangent >
 Peak separation: 5

Method : Z:\voasrv\HPCHEM1\MSVOA_V\Method\SFAMVLM111323WMA.M
 Title : VOC Analysis

37	6.722	1763	1767	1770	rBV5	2097	1629	0.10%	0.012%
38	6.911	1817	1826	1844	rBV	184635	338413	19.97%	2.430%
39	7.188	1908	1912	1915	rBV5	1493	1001	0.06%	0.007%
40	7.243	1917	1929	1951	rBV	713170	1241910	73.29%	8.917%
41	7.551	2016	2025	2045	rVV	132842	233607	13.79%	1.677%
42	7.664	2057	2060	2064	rBV6	1651	1297	0.08%	0.009%
43	7.715	2073	2076	2080	rBV7	1559	1040	0.06%	0.007%
44	7.776	2088	2095	2097	rBV7	1538	1899	0.11%	0.014%
45	7.792	2097	2100	2102	rVB4	1730	980	0.06%	0.007%
46	7.908	2126	2136	2147	rBV2	35324	61471	3.63%	0.441%
47	8.024	2161	2172	2207	rBV	321380	583425	34.43%	4.189%
48	8.365	2272	2278	2279	rBV5	3049	2961	0.17%	0.021%
49	8.583	2343	2346	2350	rVB6	1544	1303	0.08%	0.009%
50	8.648	2364	2366	2372	rVB7	2246	1793	0.11%	0.013%
51	8.693	2378	2380	2384	rVB5	2169	1258	0.07%	0.009%
52	8.715	2384	2387	2390	rBV4	1957	1376	0.08%	0.010%
53	8.786	2397	2409	2431	rBV	730739	1192176	70.36%	8.560%
54	9.011	2475	2479	2482	rBV6	1252	1229	0.07%	0.009%
55	9.197	2535	2537	2541	rVB5	1663	1057	0.06%	0.008%
56	9.474	2618	2623	2626	rBV6	1898	1974	0.12%	0.014%
57	9.490	2626	2628	2635	rVB8	2647	2936	0.17%	0.021%
58	9.542	2642	2644	2648	rVB5	2141	1551	0.09%	0.011%
59	9.635	2672	2673	2679	rVB5	1759	1596	0.09%	0.011%
60	9.866	2741	2745	2750	rBV7	1691	1684	0.10%	0.012%
61	9.969	2775	2777	2780	rVV4	2541	1356	0.08%	0.010%
62	10.037	2791	2798	2801	rBV7	1481	2018	0.12%	0.014%
63	10.152	2821	2834	2850	rBV	475825	752797	44.43%	5.405%
64	10.323	2883	2887	2888	rBV4	3124	1747	0.10%	0.013%
65	10.715	3004	3009	3012	rBV7	2019	1732	0.10%	0.012%
66	10.869	3054	3057	3060	rBV5	2081	1346	0.08%	0.010%
67	10.953	3079	3083	3085	rBV5	1404	1026	0.06%	0.007%
68	11.120	3132	3135	3136	rBV3	2169	1406	0.08%	0.010%
69	11.188	3143	3156	3179	rBV	752525	1177428	69.49%	8.454%
70	11.561	3261	3272	3292	rVV	764129	1196776	70.63%	8.593%
71	11.689	3309	3312	3317	rBV7	2014	1808	0.11%	0.013%
72	11.760	3330	3334	3336	rBV3	1155	982	0.06%	0.007%
73	11.876	3368	3370	3376	rVB6	2016	1259	0.07%	0.009%
74	11.937	3384	3389	3390	rBV4	1385	1276	0.08%	0.009%
75	12.017	3412	3414	3420	rVV6	1495	1388	0.08%	0.010%
76	12.101	3435	3440	3445	rBV7	2009	1573	0.09%	0.011%

Data Path : Z:\voasrv\HPCHEM1\MSVOA_V\Data\VW111323\
 Data File : VV032940.D
 Acq On : 13 Nov 2023 18:34
 Operator : SY/MD
 Sample : 05296-13
 Misc : 6.08gm/5mL/100uL/5mL/MSVOA_V/MEOH
 ALS Vial : 9 Sample Multiplier: 1

Instrument :
 MSVOA_V
 ClientSampleId :
 BH3S8

Integration Parameters: LSCINT.P

Integrator: RTE
 Smoothing : OFF Filtering: 5
 Sampling : 1 Min Area: 0 % of largest Peak
 Start Thrs: 0.2 Max Peaks: 100
 Stop Thrs : 0 Peak Location: TOP

If leading or trailing edge < 100 prefer < Baseline drop else tangent >
 Peak separation: 5

Method : Z:\voasrv\HPCHEM1\MSVOA_V\Method\SFAMVLM111323WMA.M
 Title : VOC Analysis

77	12.130	3445	3449	3451	rBV5	1899	1159	0.07%	0.008%
78	12.316	3504	3507	3508	rBV3	2165	1278	0.08%	0.009%
79	12.474	3554	3556	3560	rVB4	1374	1068	0.06%	0.008%
80	12.493	3560	3562	3566	rBV5	1530	1153	0.07%	0.008%
81	12.538	3571	3576	3579	rBV6	3767	3492	0.21%	0.025%
82	12.590	3584	3592	3606	rVB6	13486	24779	1.46%	0.178%
83	12.644	3606	3609	3611	rBV5	1563	977	0.06%	0.007%
84	12.770	3643	3648	3651	rBV7	1389	1396	0.08%	0.010%
85	12.882	3674	3683	3693	rBV6	20195	31725	1.87%	0.228%
86	12.937	3697	3700	3703	rBV5	1814	1283	0.08%	0.009%
87	13.082	3737	3745	3751	rBV5	5067	7416	0.44%	0.053%
88	13.204	3775	3783	3785	rBV8	3833	4938	0.29%	0.035%
89	13.281	3805	3807	3813	rVB6	1541	1145	0.07%	0.008%
90	13.387	3832	3840	3845	rBV10	7467	10360	0.61%	0.074%
91	13.680	3916	3931	3955	rBV	1083190	1694435	100.00%	12.166%
92	14.014	4029	4035	4042	rVB10	7599	10075	0.59%	0.072%
93	14.120	4066	4068	4072	rBV5	1889	1303	0.08%	0.009%
94	14.262	4110	4112	4115	rBV4	1819	1019	0.06%	0.007%
95	14.342	4134	4137	4139	rVV4	3189	1799	0.11%	0.013%
96	14.368	4142	4145	4150	rBV6	1694	1869	0.11%	0.013%
97	14.516	4189	4191	4193	rBV3	2028	1045	0.06%	0.008%
98	14.538	4193	4198	4201	rBV6	2952	3303	0.19%	0.024%
99	14.937	4316	4322	4323	rBV5	5103	4215	0.25%	0.030%
100	15.339	4438	4447	4457	rBV2	23748	41557	2.45%	0.298%

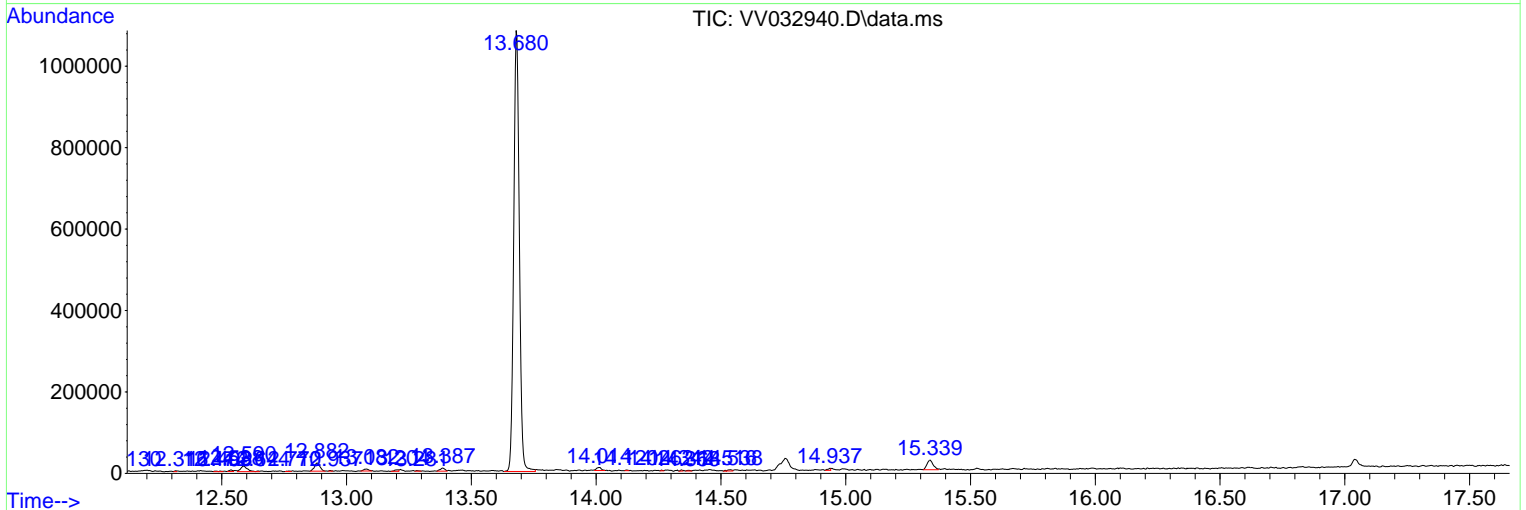
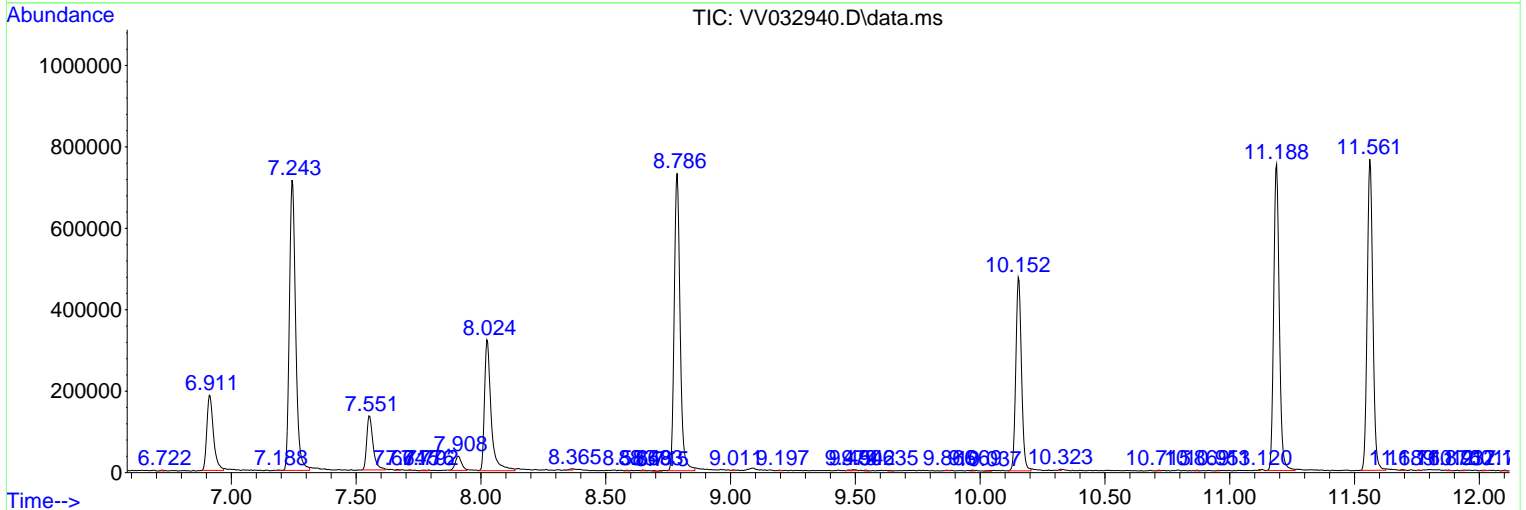
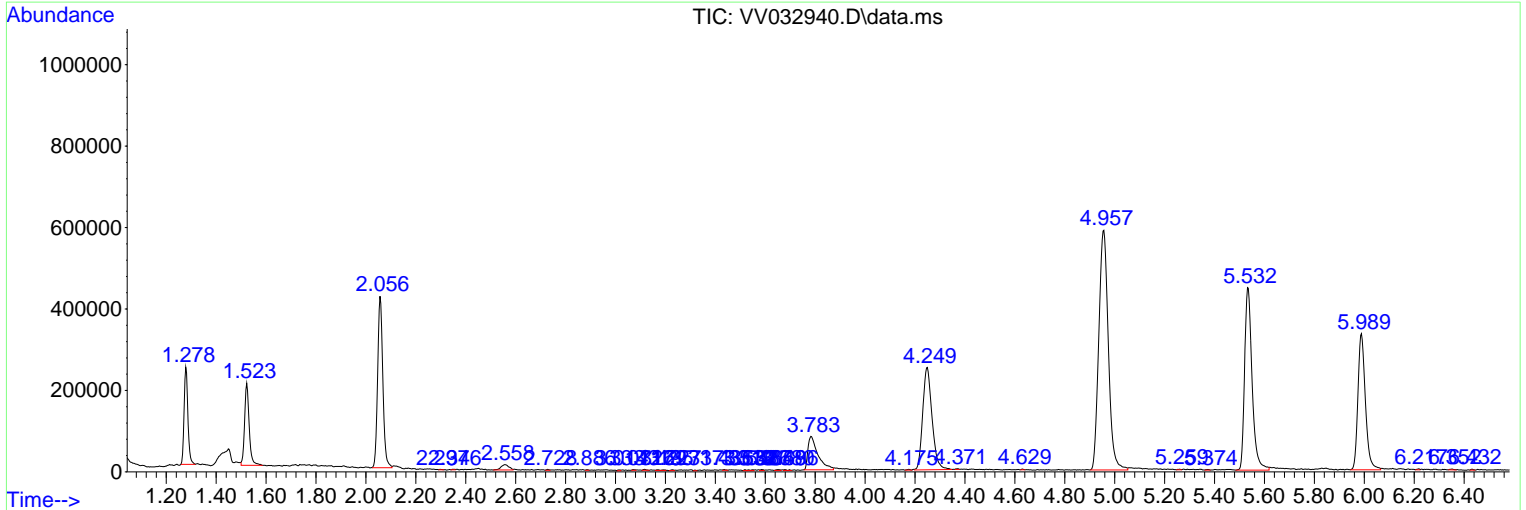
Sum of corrected areas: 13927614

Data Path : Z:\voasrv\HPCHEM1\MSVOA_V\Data\VV111323\
 Data File : VV032940.D
 Acq On : 13 Nov 2023 18:34
 Operator : SY/MD
 Sample : 05296-13
 Misc : 6.08gm/5mL/100uL/5mL/MSVOA_V/MEOH
 ALS Vial : 9 Sample Multiplier: 1

Instrument :
 MSVOA_V
 ClientSampleId :
 BH3S8

Quant Method : Z:\voasrv\HPCHEM1\MSVOA_V\Method\SFAMVLM111323WMA.M
 Quant Title : VOC Analysis

TIC Library : C:\Database\NIST20.L
 TIC Integration Parameters: LSCINT.P



Data Path : Z:\voasrv\HPCHEM1\MSVOA_V\Data\VV111323\
Data File : VV032940.D
Acq On : 13 Nov 2023 18:34
Operator : SY/MD
Sample : 05296-13
Misc : 6.08gm/5mL/100uL/5mL/MSVOA_V/MEOH
ALS Vial : 9 Sample Multiplier: 1

Instrument :
MSVOA_V
ClientSampleId :
BH3S8

Quant Method : Z:\voasrv\HPCHEM1\MSVOA_V\Method\SFAMVLM111323WMA.M
Quant Title : VOC Analysis

TIC Library : C:\Database\NIST20.L
TIC Integration Parameters: LSCINT.P

No Library Search Compounds Detected

Data Path : Z:\voasrv\HPCHEM1\MSVOA_V\Data\VV111323\
Data File : VV032940.D
Acq On : 13 Nov 2023 18:34
Operator : SY/MD
Sample : 05296-13
Misc : 6.08gm/5mL/100uL/5mL/MSVOA_V/MEOH
ALS Vial : 9 Sample Multiplier: 1

Instrument :
MSVOA_V
ClientSampleId :
BH3S8

Quant Method : Z:\voasrv\HPCHEM1\MSVOA_V\Method\SFAMVLM111323WMA.M
Quant Title : VOC Analysis

TIC Library : C:\Database\NIST0.L
TIC Integration Parameters: LSCINT.P

TIC Top Hit name	RT	EstConc	Units	Response	--Internal Standard--			
					#	RT	Resp	Conc
