

Data Path : Z:\voasrv\HPCHEM1\MSVOA_V\Data\VW111521\
 Data File : VW023508.D
 Acq On : 16 Nov 2021 01:31
 Operator : SY/MD
 Sample : M4617-18
 Misc : 25.0mL/MSVOA_V/WATER
 ALS Vial : 40 Sample Multiplier: 1

Instrument :
 MSVOA_V
 ClientSampleId :
 BG222

Integration Parameters: rteint.p
 Integrator: RTE
 Smoothing : ON Filtering: 5
 Sampling : 1 Min Area: 3 % of largest Peak
 Start Thrs: 0.1 Max Peaks: 100
 Stop Thrs : 0 Peak Location: TOP

If leading or trailing edge < 100 prefer < Baseline drop else tangent >
 Peak separation: 5

Method : Z:\voasrv\HPCHEM1\MSVOA_V\Method\SFAMVTR110421WMA.M
 Title : TRACE VOA SFAM1.0

Signal : TIC: VW023508.D\data.ms

peak #	R.T. min	first scan	max scan	last scan	PK TY	peak height	corr. area	corr. % max.	% of total
1	1.307	77	83	94	rBV	65466	65522	16.38%	1.934%
2	1.571	157	165	177	rVB	54762	61063	15.27%	1.802%
3	2.111	322	333	354	rBV	103836	152858	38.22%	4.511%
4	3.896	877	888	919	rBV	35486	119854	29.97%	3.537%
5	4.352	1014	1030	1055	rBV	74954	198901	49.74%	5.870%
6	5.050	1231	1247	1271	rBV2	158830	399897	100.00%	11.801%
7	5.619	1412	1424	1446	rBV	140247	286516	71.65%	8.455%
8	5.918	1506	1517	1537	rBV7	15112	36403	9.10%	1.074%
9	6.069	1551	1564	1592	rBV	91753	191257	47.83%	5.644%
10	6.989	1840	1850	1868	rBV2	42201	79827	19.96%	2.356%
11	7.317	1941	1952	1973	rBV	187444	332925	83.25%	9.825%
12	7.625	2039	2048	2062	rBV2	24766	44394	11.10%	1.310%
13	7.979	2151	2158	2170	rVB6	4659	7759	1.94%	0.229%
14	8.092	2182	2193	2227	rBV2	140843	310649	77.68%	9.167%
15	8.854	2418	2430	2456	rBV	218250	362559	90.66%	10.699%
16	10.217	2843	2854	2868	rBV2	56319	90318	22.59%	2.665%
17	11.249	3164	3175	3193	rBV	203175	316462	79.14%	9.339%
18	11.532	3254	3263	3280	rBV2	22654	38043	9.51%	1.123%
19	11.625	3281	3292	3313	rVB	185026	293390	73.37%	8.658%

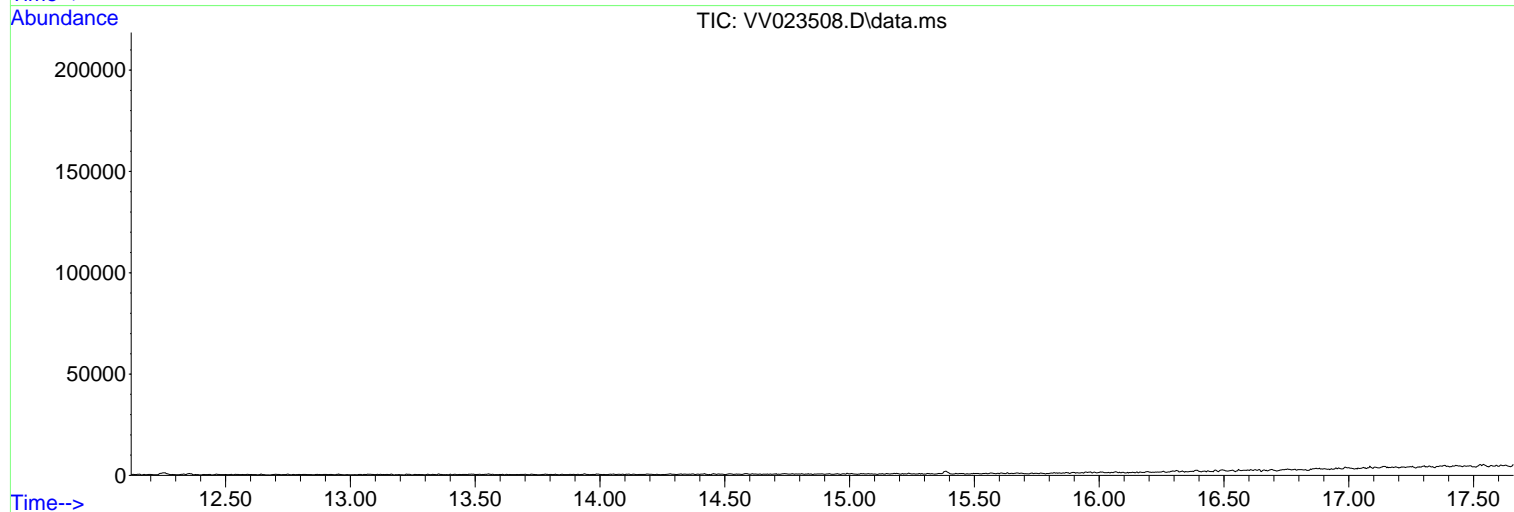
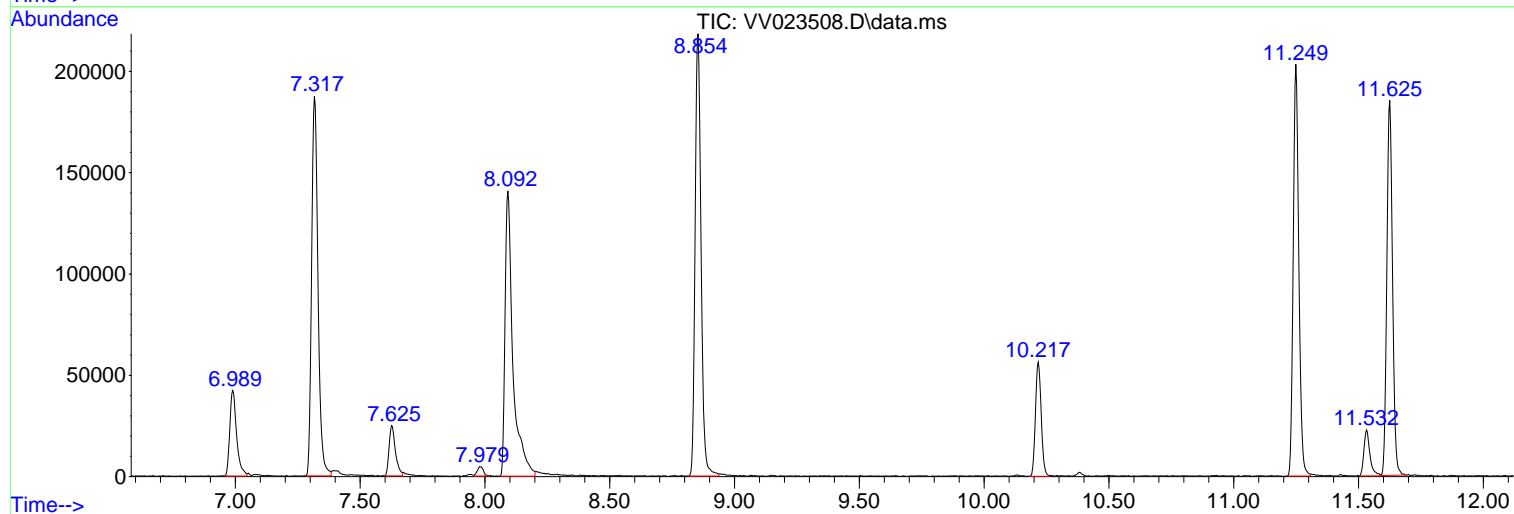
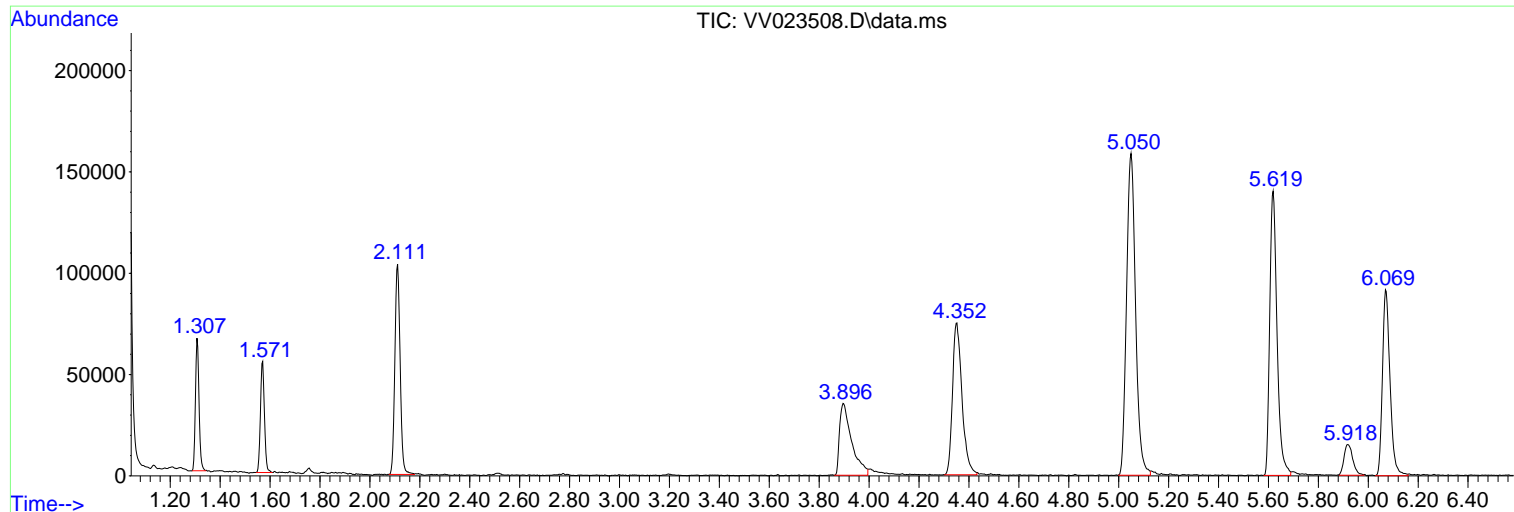
Sum of corrected areas: 3388597

Data Path : Z:\voasrv\HPCHEM1\MSVOA_V\Data\VV111521\
Data File : VV023508.D
Acq On : 16 Nov 2021 01:31
Operator : SY/MD
Sample : M4617-18
Misc : 25.0mL/MSVOA_V/WATER
ALS Vial : 40 Sample Multiplier: 1

Instrument :
MSVOA_V
ClientSampleId :
BG222

Quant Method : Z:\voasrv\HPCHEM1\MSVOA_V\Method\SFAMVTR110421WMA.M
Quant Title : TRACE VOA SFAM1.0

TIC Library : C:\Database\NIST20.L
TIC Integration Parameters: LSCINT.P



Data Path : Z:\voasrv\HPCHEM1\MSVOA_V\Data\VV111521\
 Data File : VV023508.D
 Acq On : 16 Nov 2021 01:31
 Operator : SY/MD
 Sample : M4617-18
 Misc : 25.0mL/MSVOA_V/WATER
 ALS Vial : 40 Sample Multiplier: 1

Instrument :
 MSVOA_V
 ClientSampleId :
 BG222

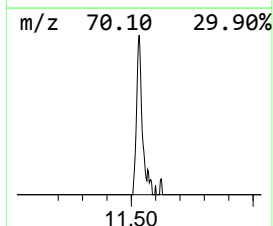
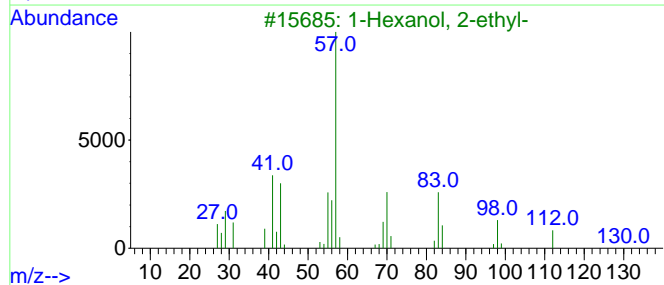
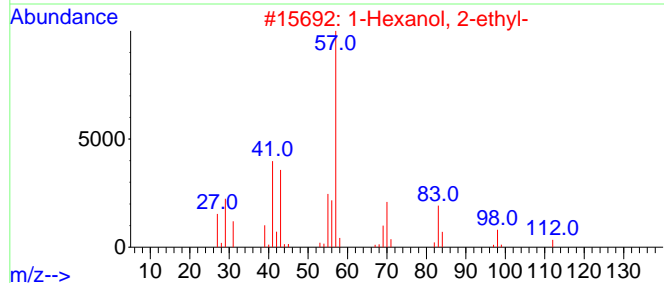
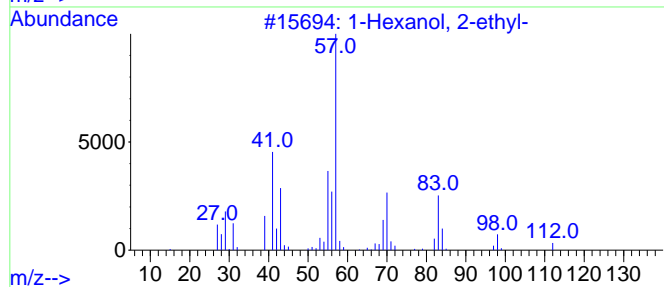
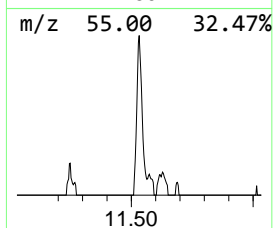
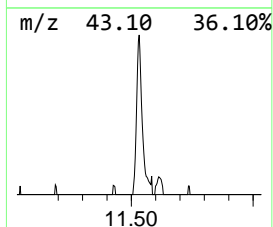
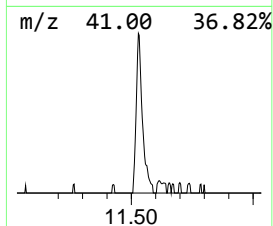
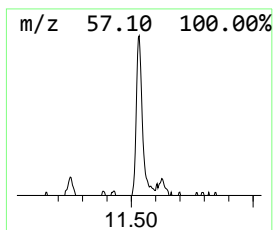
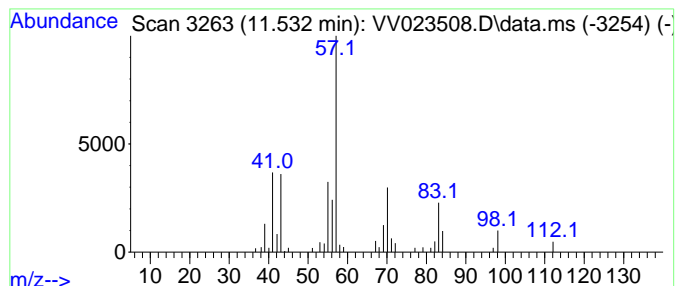
Quant Method : Z:\voasrv\HPCHEM1\MSVOA_V\Method\SFAMVTR110421WMA.M
 Quant Title : TRACE VOA SFAM1.0

TIC Library : C:\Database\NIST20.L
 TIC Integration Parameters: LSCINT.P

 Peak Number 2 1-Hexanol, 2-ethyl- Concentration Rank 2

R.T.	EstConc	Area	Relative to ISTD	R.T.
11.532	0.60 ug/L	38043	1,4-Dichlorobenzene-d4	11.249

Hit#	of 5	Tentative ID	MW	MolForm	CAS#	Qual
1		1-Hexanol, 2-ethyl-	130	C8H18O	000104-76-7	90
2		1-Hexanol, 2-ethyl-	130	C8H18O	000104-76-7	83
3		1-Hexanol, 2-ethyl-	130	C8H18O	000104-76-7	78
4		1-Hexanol, 2-ethyl-	130	C8H18O	000104-76-7	72
5		1-Pentanol, 2-ethyl-4-methyl-	130	C8H18O	000106-67-2	72



Data Path : Z:\voasrv\HPCHEM1\MSVOA_V\Data\VW111521\
Data File : VV023508.D
Acq On : 16 Nov 2021 01:31
Operator : SY/MD
Sample : M4617-18
Misc : 25.0mL/MSVOA_V/WATER
ALS Vial : 40 Sample Multiplier: 1

Instrument :
MSVOA_V
ClientSampleId :
BG222

Quant Method : Z:\voasrv\HPCHEM1\MSVOA_V\Method\SFAMVTR110421WMA.M
Quant Title : TRACE VOA SFAM1.0

TIC Library : C:\Database\NIST0.L
TIC Integration Parameters: LSCINT.P

TIC Top Hit name	RT	EstConc	Units	Response	--Internal Standard--			
					#	RT	Resp	Conc
1-Hexanol, 2-et...	11.532	0.6	ug/L	38043	3	11.249	316462	5.0