

Data Path : Z:\voasrv\HPCHEM1\MSVOA\_V\Data\VW111621\  
 Data File : VV023537.D  
 Acq On : 16 Nov 2021 16:26  
 Operator : SY/MD  
 Sample : M4617-09DL 20X  
 Misc : 25.0mL/MSVOA\_V/WATER  
 ALS Vial : 17 Sample Multiplier: 1

Instrument :  
 MSVOA\_V  
 ClientSampleId :  
 BG207DL

Quant Time: Nov 17 00:53:32 2021  
 Quant Method : Z:\voasrv\HPCHEM1\MSVOA\_V\Method\SFAMVTR110421WMA.M  
 Quant Title : TRACE VOA SFAM1.0  
 QLast Update : Wed Nov 17 00:48:57 2021  
 Response via : Initial Calibration

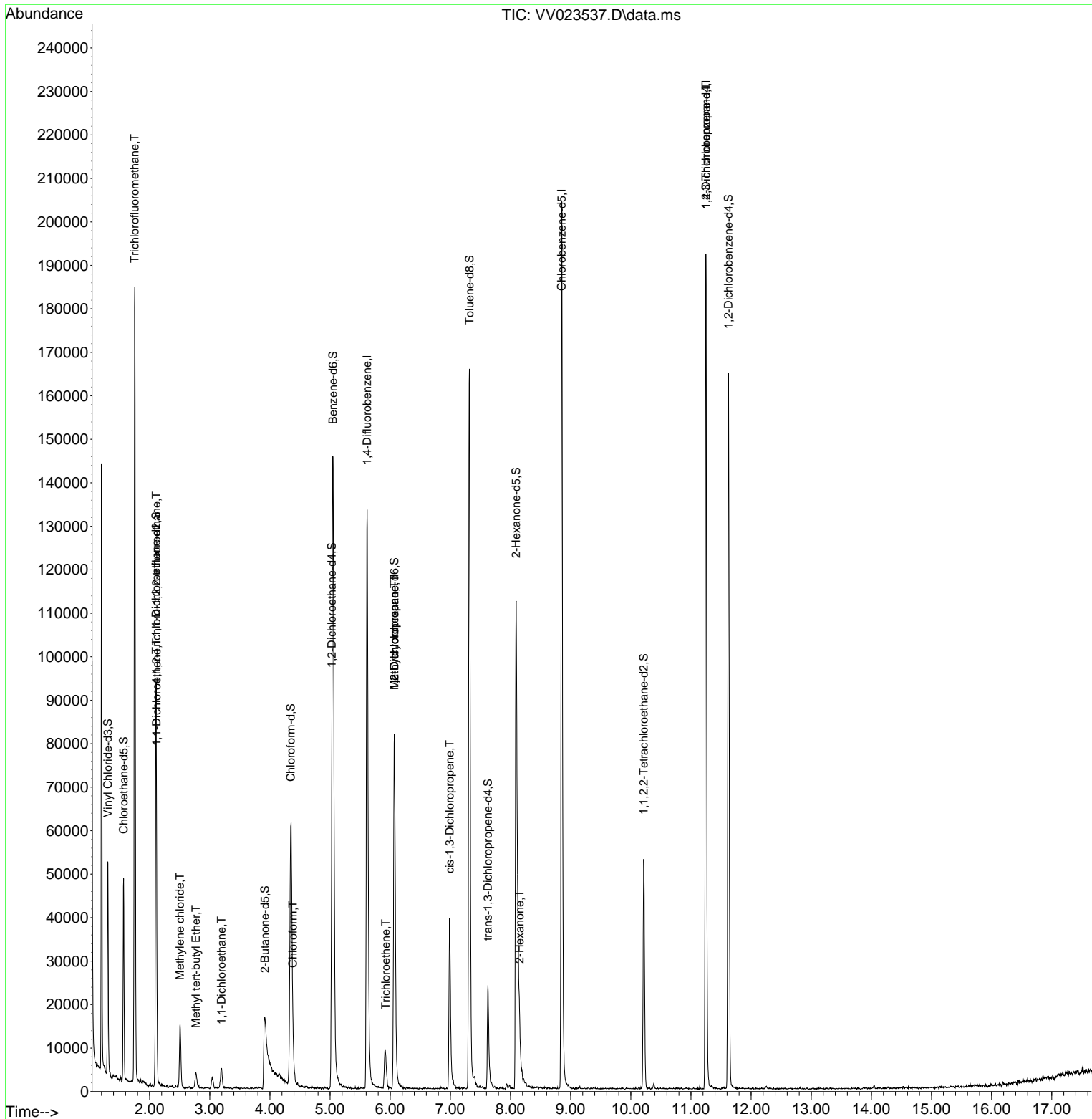
Compound	R.T.	QIon	Response	Conc	Units	Dev(Min)
Internal Standards						
1) 1,4-Difluorobenzene	5.616	114	117603	5.000	ug/L	0.00
28) Chlorobenzene-d5	8.850	117	117024	5.000	ug/L	0.00
58) 1,4-Dichlorobenzene-d4	11.249	152	52890	5.000	ug/L	0.00
System Monitoring Compounds						
4) Vinyl Chloride-d3	1.304	65	30420	4.129	ug/L	0.00
Spiked Amount	5.000	Range 40 - 130	Recovery	=	82.600%	
7) Chloroethane-d5	1.568	69	27511	4.582	ug/L	0.00
Spiked Amount	5.000	Range 65 - 130	Recovery	=	91.600%	
11) 1,1-Dichloroethene-d2	2.108	63	45843	3.324	ug/L	0.00
Spiked Amount	5.000	Range 60 - 125	Recovery	=	66.400%	
20) 2-Butanone-d5	3.915	46	36766	28.966	ug/L	0.00
Spiked Amount	50.000	Range 40 - 130	Recovery	=	57.940%	
24) Chloroform-d	4.346	84	62201	3.962	ug/L	0.00
Spiked Amount	5.000	Range 70 - 125	Recovery	=	79.200%	
26) 1,2-Dichloroethane-d4	5.031	65	32594	4.616	ug/L	0.00
Spiked Amount	5.000	Range 70 - 130	Recovery	=	92.400%	
32) Benzene-d6	5.050	84	130021	4.330	ug/L	0.00
Spiked Amount	5.000	Range 70 - 125	Recovery	=	86.600%	
36) 1,2-Dichloropropane-d6	6.069	67	39596	4.480	ug/L	0.00
Spiked Amount	5.000	Range 60 - 140	Recovery	=	89.600%	
41) Toluene-d8	7.317	98	111240	3.953	ug/L	0.00
Spiked Amount	5.000	Range 70 - 130	Recovery	=	79.000%	
43) trans-1,3-Dichloroprop...	7.625	79	14698	4.385	ug/L	0.00
Spiked Amount	5.000	Range 55 - 130	Recovery	=	87.800%	
46) 2-Hexanone-d5	8.092	63	46971	38.091	ug/L	0.00
Spiked Amount	50.000	Range 45 - 130	Recovery	=	76.180%	
56) 1,1,2,2-Tetrachloroeth...	10.217	84	25651	4.035	ug/L	0.00
Spiked Amount	5.000	Range 65 - 120	Recovery	=	80.800%	
66) 1,2-Dichlorobenzene-d4	11.625	152	44217	5.021	ug/L	0.00
Spiked Amount	5.000	Range 80 - 120	Recovery	=	100.400%	
Target Compounds						
9) Trichlorofluoromethane	1.751	101	103515	7.075	ug/L	99
10) 1,1,2-Trichloro-1,2,2-...	2.111	101	1642	0.223	ug/L #	76
12) 1,1-Dichloroethene	2.114	96	1260	0.180	ug/L #	1
16) Methylene chloride	2.507	84	6243	0.610	ug/L	95
17) Methyl tert-butyl Ether	2.770	73	3320	0.215	ug/L #	87
19) 1,1-Dichloroethane	3.195	63	4971	0.342	ug/L	97
25) Chloroform	4.381	83	7639	0.492	ug/L	95
34) Trichloroethene	5.924	95	2412	0.277	ug/L	93
35) Methylcyclohexane	6.069	83	9948	0.725	ug/L #	18
37) 1,2-Dichloropropane	6.069	63	4724	0.619	ug/L #	83
39) cis-1,3-Dichloropropene	6.989	75	1131	0.103	ug/L #	62
48) 2-Hexanone	8.149	43	3771	1.520	ug/L #	72
61) 1,2,3-Trichloropropane	11.249	75	5548	1.579	ug/L #	65

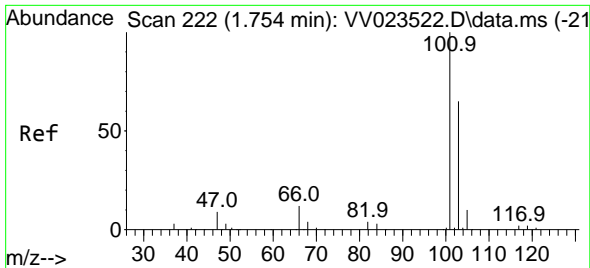
(#) = qualifier out of range (m) = manual integration (+) = signals summed

Data Path : Z:\voasrv\HPCHEM1\MSVOA\_V\Data\VV111621\  
 Data File : VV023537.D  
 Acq On : 16 Nov 2021 16:26  
 Operator : SY/MD  
 Sample : M4617-09DL 20X  
 Misc : 25.0mL/MSVOA\_V/WATER  
 ALS Vial : 17 Sample Multiplier: 1

Instrument :  
 MSVOA\_V  
 ClientSampleId :  
 BG207DL

Quant Time: Nov 17 00:53:32 2021  
 Quant Method : Z:\voasrv\HPCHEM1\MSVOA\_V\Method\SFAMVTR110421WMA.M  
 Quant Title : TRACE VOA SFAM1.0  
 QLast Update : Wed Nov 17 00:48:57 2021  
 Response via : Initial Calibration

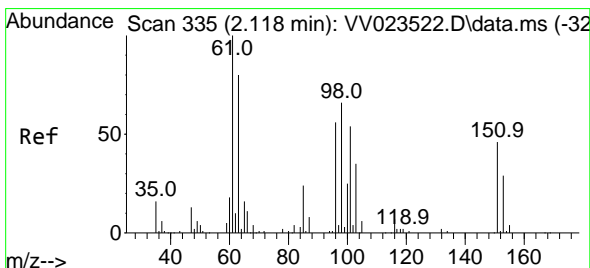
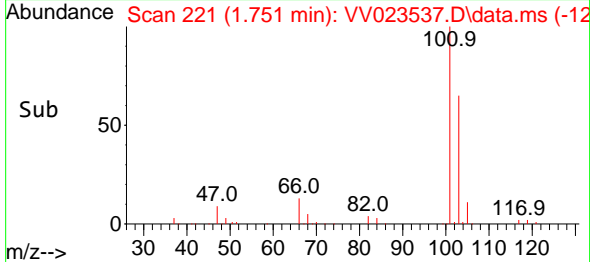
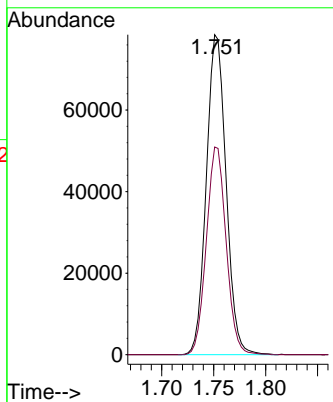
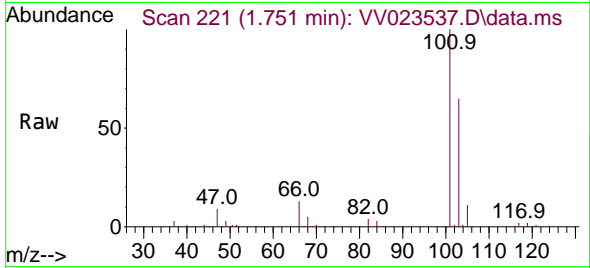




#9  
 Trichlorofluoromethane  
 Concen: 7.075 ug/L  
 RT: 1.751 min Scan# 21  
 Delta R.T. -0.003 min  
 Lab File: VV023537.D  
 Acq: 16 Nov 2021 16:26

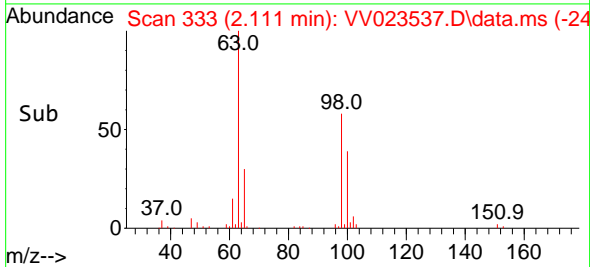
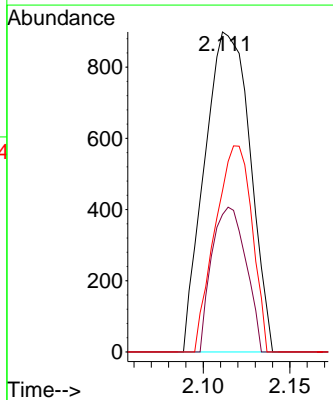
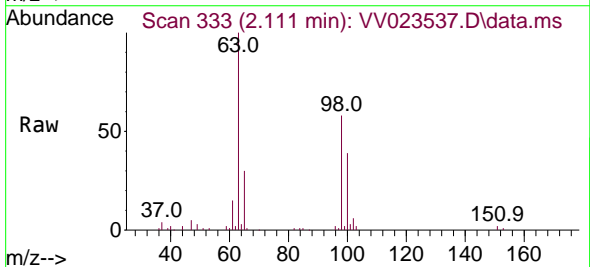
Instrument : MSVOA\_V  
 ClientSampleId : BG207DL

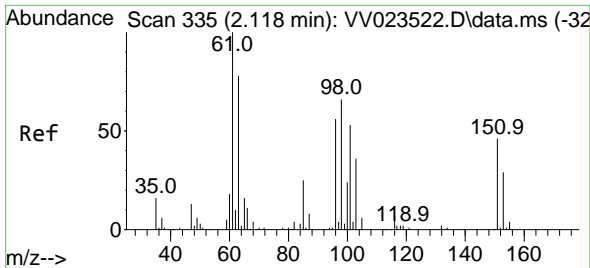
Tgt Ion:101 Resp: 103515  
 Ion Ratio Lower Upper  
 101 100  
 103 65.0 52.6 79.0



#10  
 1,1,2-Trichloro-1,2,2-trifluoroethane  
 Concen: 0.223 ug/L  
 RT: 2.111 min Scan# 333  
 Delta R.T. -0.006 min  
 Lab File: VV023537.D  
 Acq: 16 Nov 2021 16:26

Tgt Ion:101 Resp: 1642  
 Ion Ratio Lower Upper  
 101 100  
 85 33.9 35.3 52.9#  
 151 52.3 62.2 93.2#

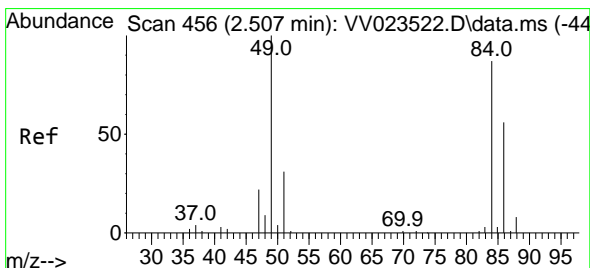
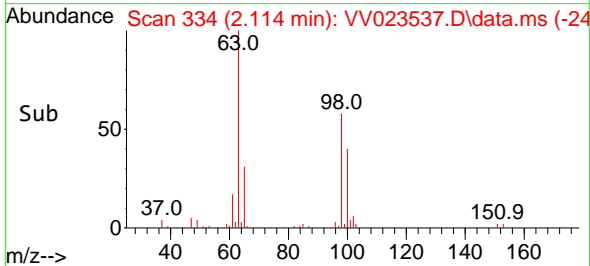
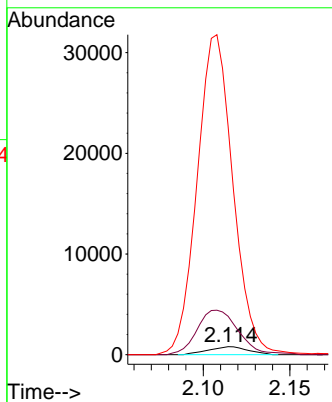
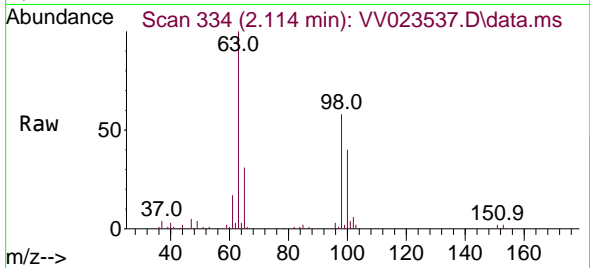




#12  
 1,1-Dichloroethene  
 Concen: 0.180 ug/L  
 RT: 2.114 min Scan# 311  
 Delta R.T. -0.003 min  
 Lab File: VV023537.D  
 Acq: 16 Nov 2021 16:26

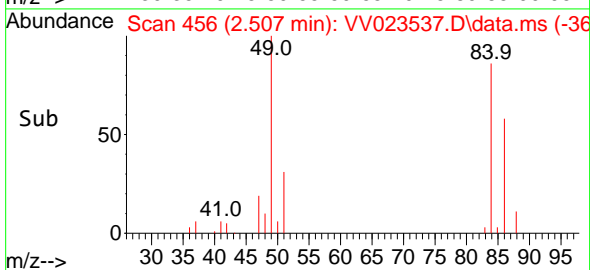
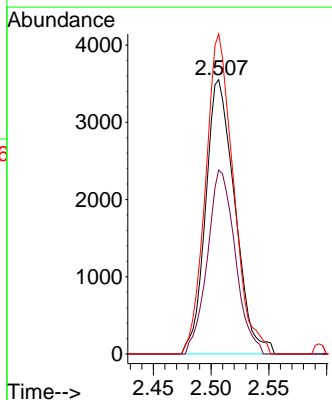
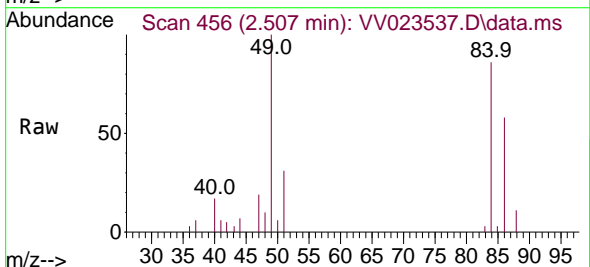
Instrument : MSVOA\_V  
 ClientSampleId : BG207DL

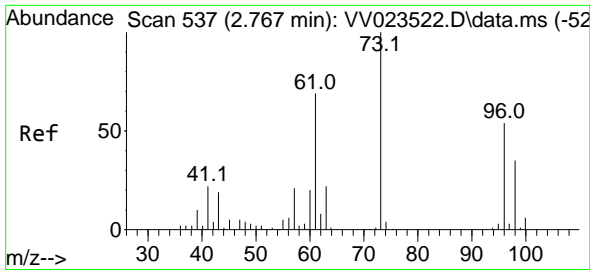
Tgt Ion: 96 Resp: 1260  
 Ion Ratio Lower Upper  
 96 100  
 61 484.2 121.5 225.7#  
 63 2880.8 99.6 185.0#



#16  
 Methylene chloride  
 Concen: 0.610 ug/L  
 RT: 2.507 min Scan# 456  
 Delta R.T. 0.000 min  
 Lab File: VV023537.D  
 Acq: 16 Nov 2021 16:26

Tgt Ion: 84 Resp: 6243  
 Ion Ratio Lower Upper  
 84 100  
 86 67.1 42.3 78.5  
 49 116.7 79.7 148.1



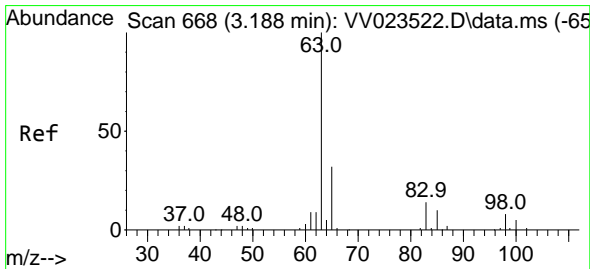
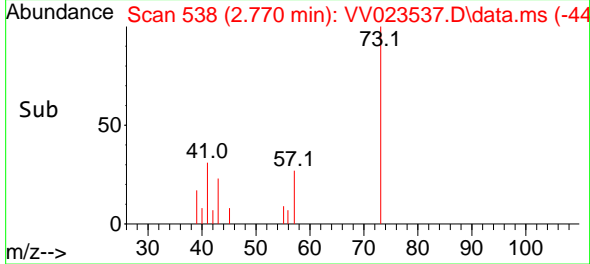
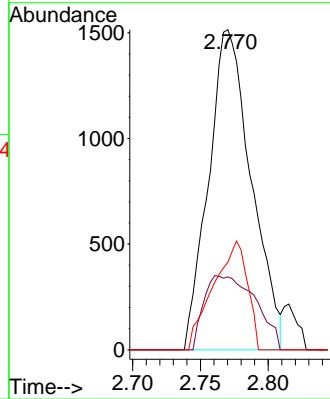
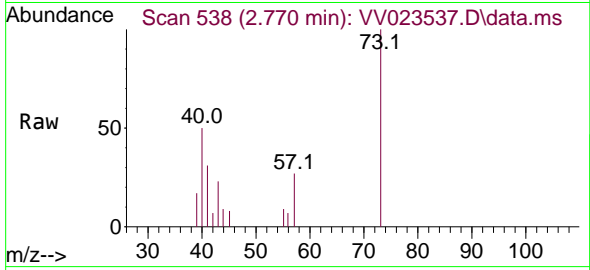


#17  
 Methyl tert-butyl Ether  
 Concen: 0.215 ug/L  
 RT: 2.770 min Scan# 51  
 Delta R.T. 0.003 min  
 Lab File: VV023537.D  
 Acq: 16 Nov 2021 16:26

Instrument :  
 MSVOA\_V  
 ClientSampleId :  
 BG207DL

Tgt Ion: 73 Resp: 3320

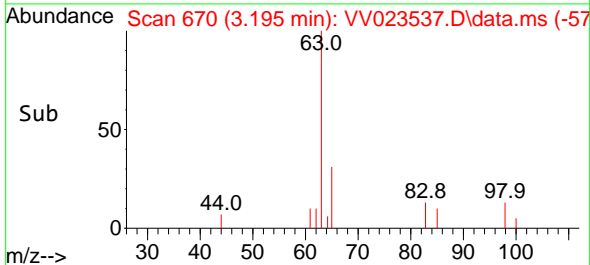
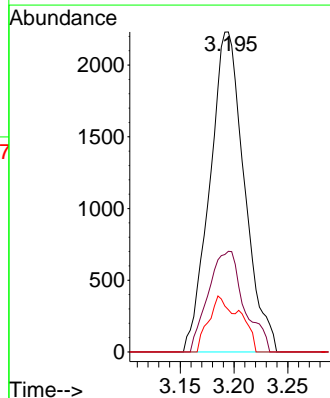
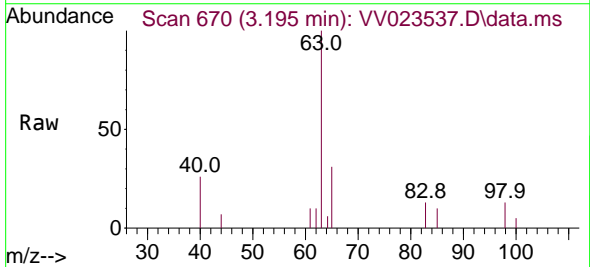
Ion	Ratio	Lower	Upper
73	100		
43	27.8	17.4	26.0#
57	27.1	16.5	24.7#

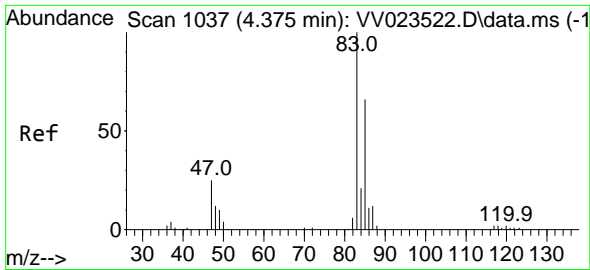


#19  
 1,1-Dichloroethane  
 Concen: 0.342 ug/L  
 RT: 3.195 min Scan# 670  
 Delta R.T. 0.006 min  
 Lab File: VV023537.D  
 Acq: 16 Nov 2021 16:26

Tgt Ion: 63 Resp: 4971

Ion	Ratio	Lower	Upper
63	100		
65	31.5	22.6	42.0
83	13.2	11.1	20.7

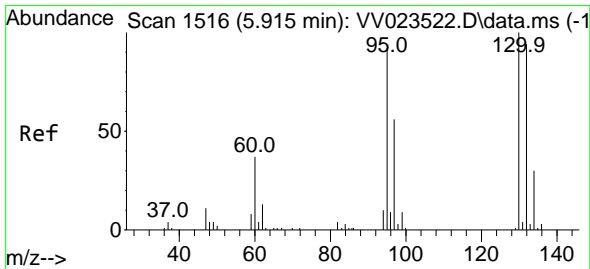
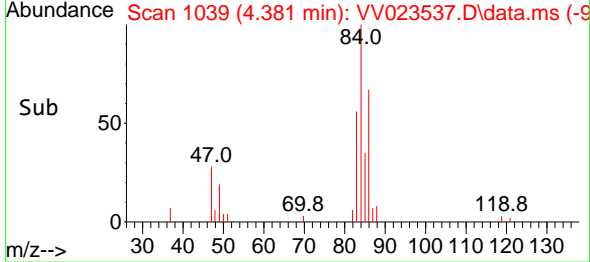
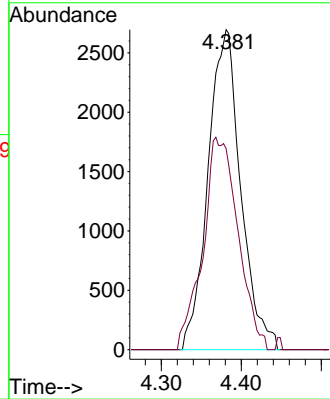
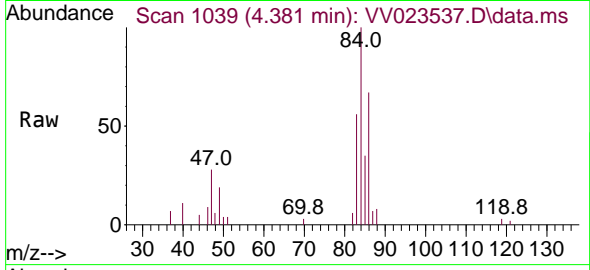




#25  
 Chloroform  
 Concen: 0.492 ug/L  
 RT: 4.381 min Scan# 1039  
 Delta R.T. 0.006 min  
 Lab File: VV023537.D  
 Acq: 16 Nov 2021 16:26

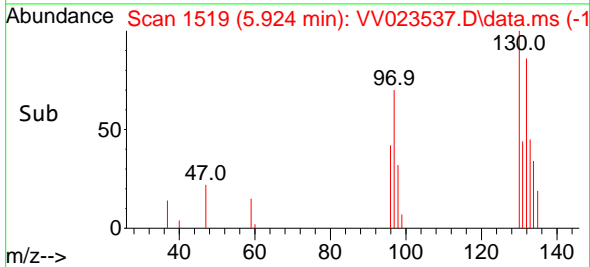
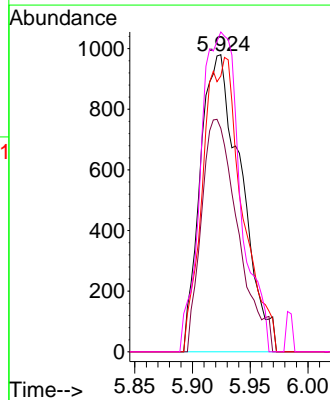
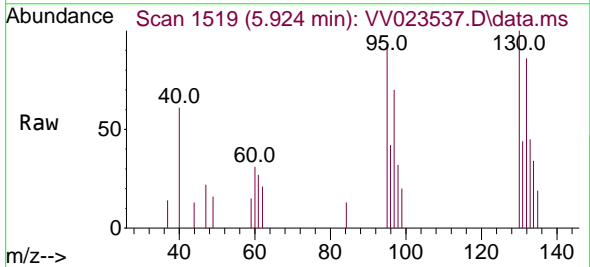
Instrument : MSVOA\_V  
 ClientSampleId : BG207DL

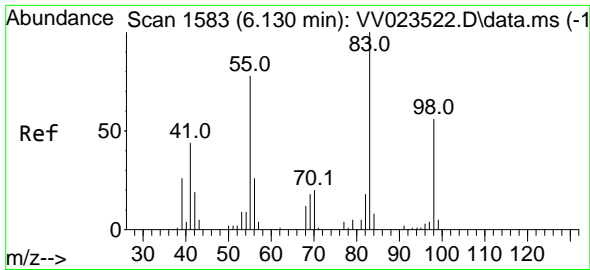
Tgt Ion: 83 Resp: 7639  
 Ion Ratio Lower Upper  
 83 100  
 85 62.8 46.8 86.8



#34  
 Trichloroethene  
 Concen: 0.277 ug/L  
 RT: 5.924 min Scan# 1519  
 Delta R.T. 0.010 min  
 Lab File: VV023537.D  
 Acq: 16 Nov 2021 16:26

Tgt Ion: 95 Resp: 2412  
 Ion Ratio Lower Upper  
 95 100  
 97 75.2 45.0 83.6  
 132 92.9 69.7 129.4  
 130 107.7 73.7 136.9

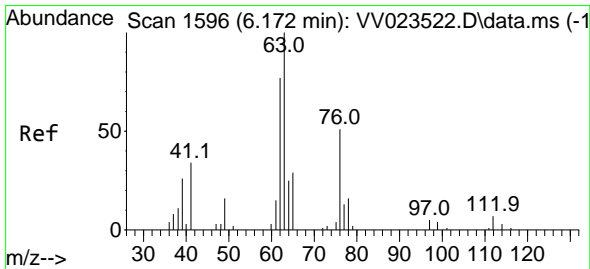
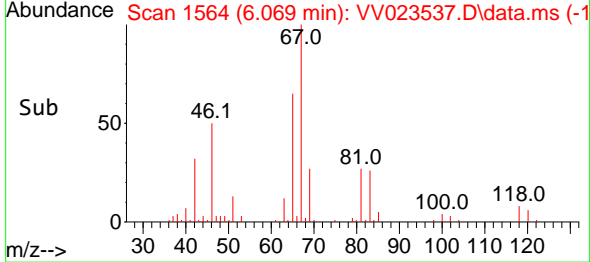
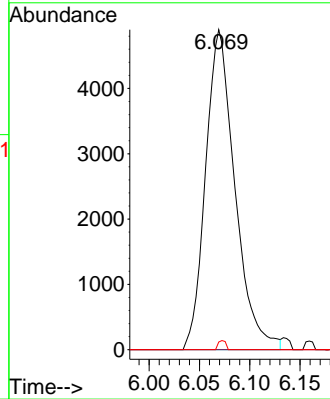
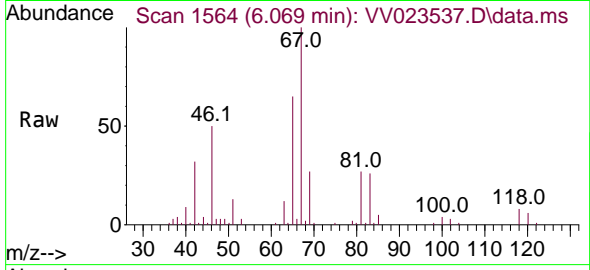




#35  
 Methylcyclohexane  
 Concen: 0.725 ug/L  
 RT: 6.069 min Scan# 1564  
 Delta R.T. -0.061 min  
 Lab File: VV023537.D  
 Acq: 16 Nov 2021 16:26

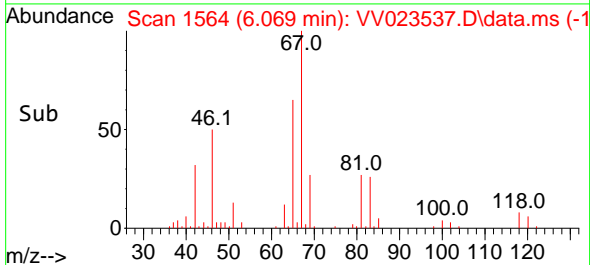
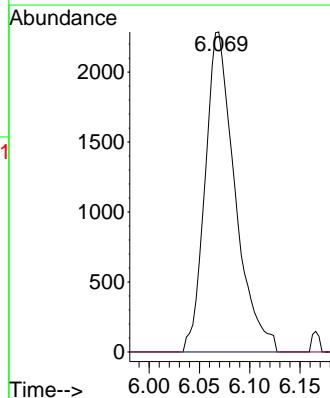
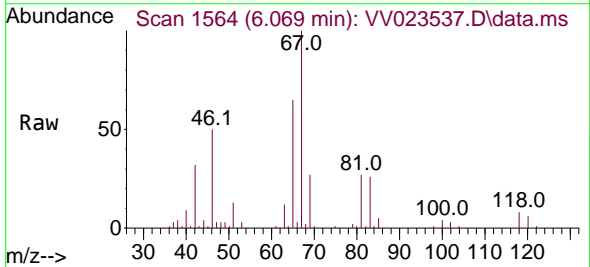
Instrument : MSVOA\_V  
 ClientSampleId : BG207DL

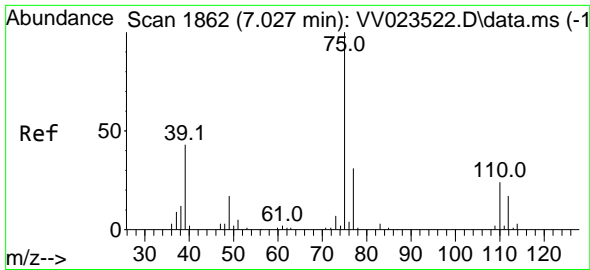
Tgt Ion	Resp	Lower	Upper
83	9948		
55	0.0	62.8	94.2#
98	0.7	37.9	56.9#



#37  
 1,2-Dichloropropane  
 Concen: 0.619 ug/L  
 RT: 6.069 min Scan# 1564  
 Delta R.T. -0.103 min  
 Lab File: VV023537.D  
 Acq: 16 Nov 2021 16:26

Tgt Ion	Resp	Lower	Upper
63	4724		
112	0.0	4.6	6.8#

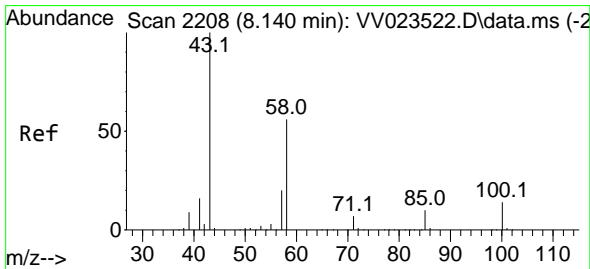
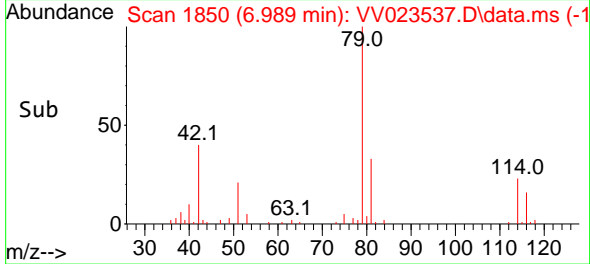
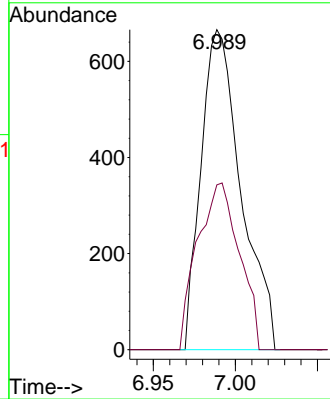
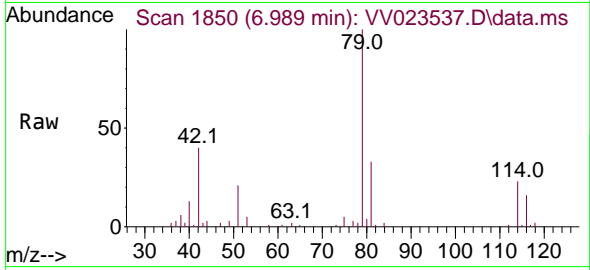




#39  
 cis-1,3-Dichloropropene  
 Concen: 0.103 ug/L  
 RT: 6.989 min Scan# 1131  
 Delta R.T. -0.039 min  
 Lab File: VV023537.D  
 Acq: 16 Nov 2021 16:26

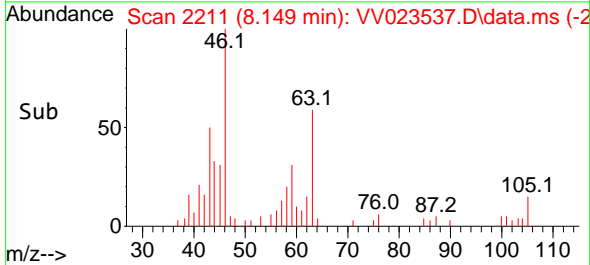
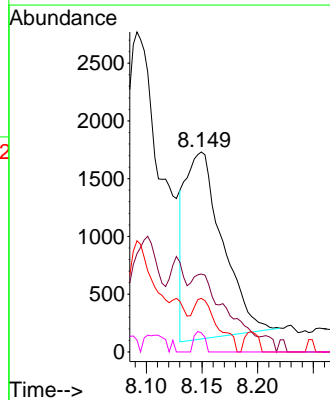
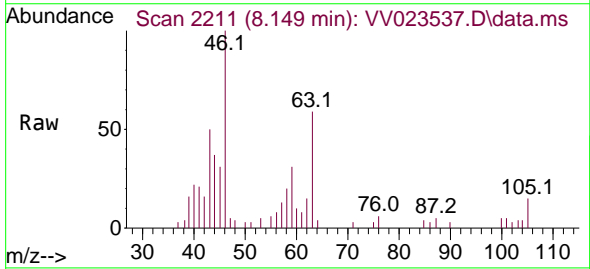
Instrument : MSVOA\_V  
 ClientSampleId : BG207DL

Tgt Ion: 75 Resp: 1131  
 Ion Ratio Lower Upper  
 75 100  
 77 51.5 21.6 40.2#

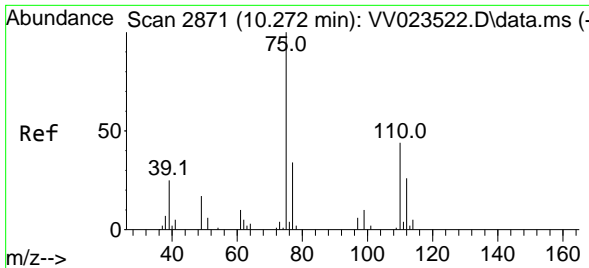


#48  
 2-Hexanone  
 Concen: 1.520 ug/L  
 RT: 8.149 min Scan# 2211  
 Delta R.T. 0.010 min  
 Lab File: VV023537.D  
 Acq: 16 Nov 2021 16:26

Tgt Ion: 43 Resp: 3771  
 Ion Ratio Lower Upper  
 43 100  
 58 28.0 43.7 65.5#  
 57 19.5 14.1 21.1  
 100 3.1 10.2 15.2#

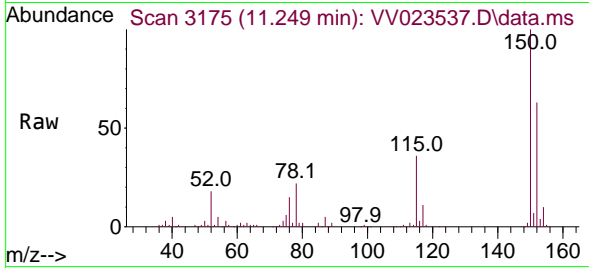






#61  
 1,2,3-Trichloropropane  
 Concen: 1.579 ug/L  
 RT: 11.249 min Scan# 31  
 Delta R.T. 0.977 min  
 Lab File: VV023537.D  
 Acq: 16 Nov 2021 16:26

Instrument :  
 MSVOA\_V  
 ClientSampleId :  
 BG207DL



Tgt Ion	Resp	Lower	Upper
75	5548		
75	100		
77	31.1	26.6	39.8
110	1.7	31.8	47.6#

