

Data Path : Z:\voasrv\HPCHEM1\MSVOA\_V\Data\VW111621\  
 Data File : VV023551.D  
 Acq On : 16 Nov 2021 22:22  
 Operator : SY/MD  
 Sample : M4627-01  
 Misc : 25.0mL/MSVOA\_V/WATER  
 ALS Vial : 32 Sample Multiplier: 1

**Instrument :**  
 MSVOA\_V  
**ClientSampleId :**  
 H4630

**Manual Integrations**  
**APPROVED**  
 Reviewed By :John Carlone 11/17/2021  
 Supervised By :Mahesh Dadoda 11/18/2021

Quant Time: Nov 17 03:40:11 2021  
 Quant Method : Z:\voasrv\HPCHEM1\MSVOA\_V\Method\SFAMVTR110421WMA.M  
 Quant Title : TRACE VOA SFAM1.0  
 QLast Update : Wed Nov 17 02:49:39 2021  
 Response via : Initial Calibration

Compound	R.T.	QIon	Response	Conc	Units	Dev(Min)
Internal Standards						
1) 1,4-Difluorobenzene	5.619	114	120025	5.000	ug/L	0.00
28) Chlorobenzene-d5	8.854	117	119982	5.000	ug/L	0.00
58) 1,4-Dichlorobenzene-d4	11.249	152	52210	5.000	ug/L	0.00
System Monitoring Compounds						
4) Vinyl Chloride-d3	1.307	65	26885	3.576	ug/L	0.00
Spiked Amount	5.000	Range 40 - 130	Recovery	=	71.600%	
7) Chloroethane-d5	1.568	69	25340	4.135	ug/L	0.00
Spiked Amount	5.000	Range 65 - 130	Recovery	=	82.600%	
11) 1,1-Dichloroethene-d2	2.108	63	40577	2.883	ug/L	0.00
Spiked Amount	5.000	Range 60 - 125	Recovery	=	57.600%#	
20) 2-Butanone-d5	3.915	46	55931m	43.176	ug/L	0.00
Spiked Amount	50.000	Range 40 - 130	Recovery	=	86.360%	
24) Chloroform-d	4.349	84	64408	4.019	ug/L	0.00
Spiked Amount	5.000	Range 70 - 125	Recovery	=	80.400%	
26) 1,2-Dichloroethane-d4	5.034	65	31157	4.324	ug/L	0.00
Spiked Amount	5.000	Range 70 - 130	Recovery	=	86.400%	
32) Benzene-d6	5.050	84	119030	3.866	ug/L	0.00
Spiked Amount	5.000	Range 70 - 125	Recovery	=	77.400%	
36) 1,2-Dichloropropane-d6	6.069	67	38337	4.230	ug/L	0.00
Spiked Amount	5.000	Range 60 - 140	Recovery	=	84.600%	
41) Toluene-d8	7.317	98	99898	3.463	ug/L	0.00
Spiked Amount	5.000	Range 70 - 130	Recovery	=	69.200%#	
43) trans-1,3-Dichloroprop...	7.629	79	12806	3.727	ug/L	0.00
Spiked Amount	5.000	Range 55 - 130	Recovery	=	74.600%	
46) 2-Hexanone-d5	8.095	63	40092	31.711	ug/L	0.00
Spiked Amount	50.000	Range 45 - 130	Recovery	=	63.420%	
56) 1,1,2,2-Tetrachloroeth...	10.217	84	22438	3.443	ug/L	0.00
Spiked Amount	5.000	Range 65 - 120	Recovery	=	68.800%	
66) 1,2-Dichlorobenzene-d4	11.625	152	39939	4.594	ug/L	0.00
Spiked Amount	5.000	Range 80 - 120	Recovery	=	91.800%	
Target Compounds						
13) Acetone	2.195	43	4249m	5.368	ug/L	Qvalue

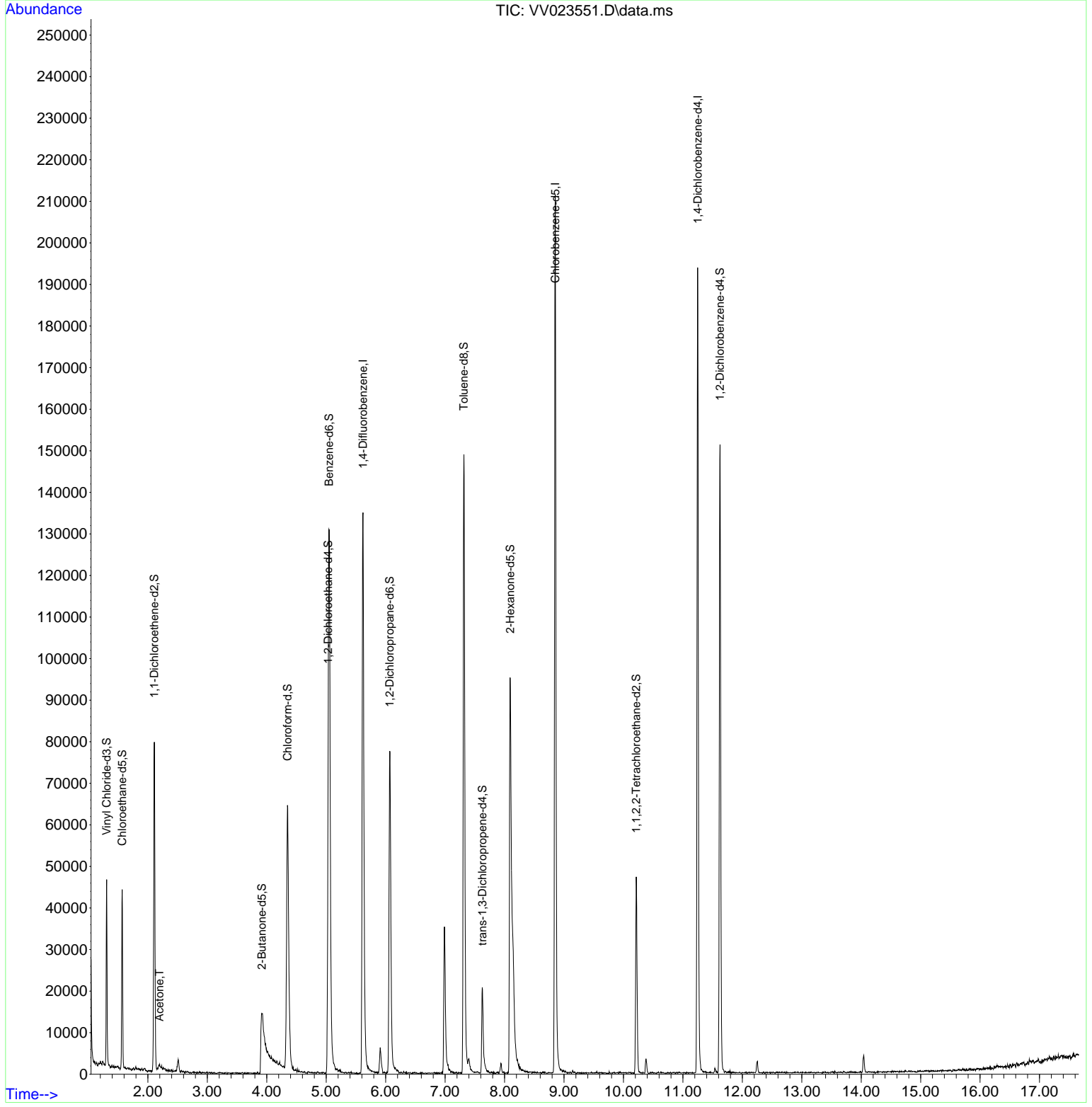
(#) = qualifier out of range (m) = manual integration (+) = signals summed

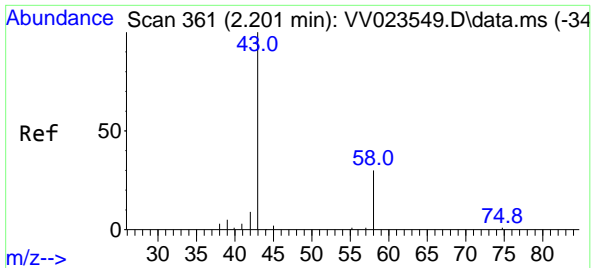
Data Path : Z:\voasrv\HPCHEM1\MSVOA\_V\Data\VV111621\  
 Data File : VV023551.D  
 Acq On : 16 Nov 2021 22:22  
 Operator : SY/MD  
 Sample : M4627-01  
 Misc : 25.0mL/MSVOA\_V/WATER  
 ALS Vial : 32 Sample Multiplier: 1

**Instrument :**  
 MSVOA\_V  
**ClientSampleId :**  
 H4630

Quant Time: Nov 17 03:40:11 2021  
 Quant Method : Z:\voasrv\HPCHEM1\MSVOA\_V\Method\SFAMVTR110421WMA.M  
 Quant Title : TRACE VOA SFAM1.0  
 QLast Update : Wed Nov 17 02:49:39 2021  
 Response via : Initial Calibration

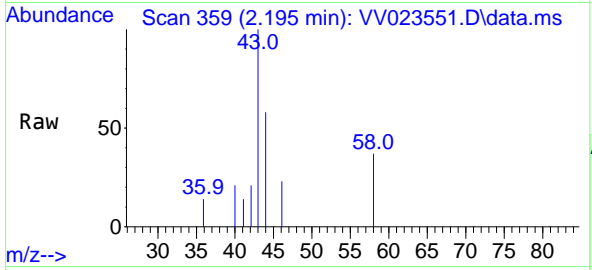
**Manual Integrations**  
**APPROVED**  
 Reviewed By :John Carlone 11/17/2021  
 Supervised By :Mahesh Dadoda 11/18/2021





#13  
 Acetone  
 Concen: 5.368 ug/L m  
 RT: 2.195 min Scan# 3  
 Delta R.T. -0.006 min  
 Lab File: VV023551.D  
 Acq: 16 Nov 2021 22:22

Instrument :  
 MSVOA\_V  
 ClientSampleId :  
 H4630



Tgt Ion: 43 Resp: 4249  
 Ion Ratio Lower Upper  
 43 100  
 58 9.9 0.0 55.4

Manual Integrations  
**APPROVED**  
 Reviewed By :John Carlone 11/17/2021  
 Supervised By :Mahesh Dadoda 11/18/2021

