

Data Path : Z:\voasrv\HPCHEM1\MSVOA_V\Data\VW111622\
 Data File : VV029007.D
 Acq On : 16 Nov 2022 11:16
 Operator : SY/MD
 Sample : N5590-16
 Misc : 25.0mL/MSVOA_V/WATER
 ALS Vial : 4 Sample Multiplier: 1

Instrument :
 MSVOA_V
 ClientSampleId :
 VHBLK001

Quant Time: Nov 17 02:51:23 2022
 Quant Method : Z:\voasrv\HPCHEM1\MSVOA_V\Method\SFAMVTR111122WMA.M
 Quant Title : TRACE VOA SFAM1.0
 QLast Update : Thu Nov 17 02:49:50 2022
 Response via : Initial Calibration

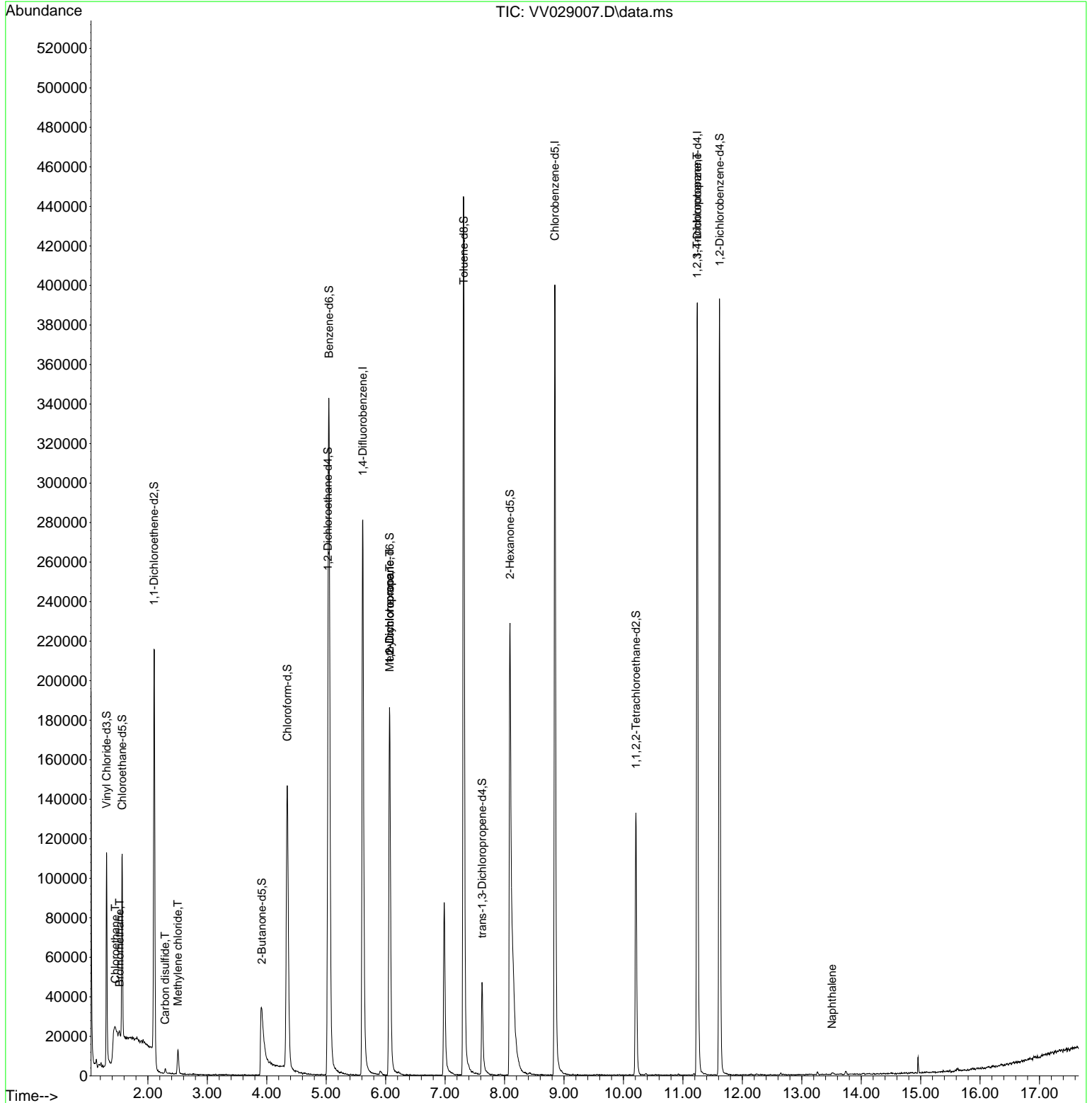
Compound	R.T.	QIon	Response	Conc	Units	Dev(Min)
Internal Standards						
1) 1,4-Difluorobenzene	5.616	114	271204	5.000	ug/L	0.00
28) Chlorobenzene-d5	8.847	117	248264	5.000	ug/L	0.00
58) 1,4-Dichlorobenzene-d4	11.243	152	113713	5.000	ug/L	0.00
System Monitoring Compounds						
4) Vinyl Chloride-d3	1.304	65	75133	4.544	ug/L	0.00
Spiked Amount	5.000	Range 40 - 130	Recovery	=	90.800%	
7) Chloroethane-d5	1.568	69	59977	4.126	ug/L	0.00
Spiked Amount	5.000	Range 65 - 130	Recovery	=	82.600%	
11) 1,1-Dichloroethene-d2	2.105	63	102198	3.392	ug/L	0.00
Spiked Amount	5.000	Range 60 - 125	Recovery	=	67.800%	
20) 2-Butanone-d5	3.915	46	87558	31.636	ug/L	0.02
Spiked Amount	50.000	Range 40 - 130	Recovery	=	63.280%	
24) Chloroform-d	4.346	84	158895	4.681	ug/L	0.00
Spiked Amount	5.000	Range 70 - 125	Recovery	=	93.600%	
26) 1,2-Dichloroethane-d4	5.031	65	72555	4.751	ug/L	0.00
Spiked Amount	5.000	Range 70 - 130	Recovery	=	95.000%	
32) Benzene-d6	5.047	84	345577	4.663	ug/L	0.00
Spiked Amount	5.000	Range 70 - 125	Recovery	=	93.200%	
36) 1,2-Dichloropropane-d6	6.066	67	95279	4.605	ug/L	0.00
Spiked Amount	5.000	Range 60 - 140	Recovery	=	92.000%	
41) Toluene-d8	7.313	98	318192	4.770	ug/L	0.00
Spiked Amount	5.000	Range 70 - 130	Recovery	=	95.400%	
43) trans-1,3-Dichloroprop...	7.622	79	32654	4.838	ug/L	0.00
Spiked Amount	5.000	Range 55 - 130	Recovery	=	96.800%	
46) 2-Hexanone-d5	8.092	63	127589	44.291	ug/L	0.00
Spiked Amount	50.000	Range 45 - 130	Recovery	=	88.580%	
56) 1,1,2,2-Tetrachloroeth...	10.210	84	70196	4.893	ug/L	0.00
Spiked Amount	5.000	Range 65 - 120	Recovery	=	97.800%	
66) 1,2-Dichlorobenzene-d4	11.619	152	112979	5.553	ug/L	0.00
Spiked Amount	5.000	Range 80 - 120	Recovery	=	111.000%	
Target Compounds						
6) Bromomethane	1.523	94	611	0.048	ug/L	86
8) Chloroethane	1.452	64	62679	4.984	ug/L #	51
14) Carbon disulfide	2.291	76	3424	0.059	ug/L	96
16) Methylene chloride	2.507	84	5941	0.280	ug/L	97
35) Methylcyclohexane	6.069	83	24439	0.716	ug/L #	21
37) 1,2-Dichloropropane	6.066	63	10744	0.614	ug/L #	86
61) 1,2,3-Trichloropropane	11.239	75	11602	1.493	ug/L #	64
71) Naphthalene	13.509	128	1835	0.070	ug/L #	73

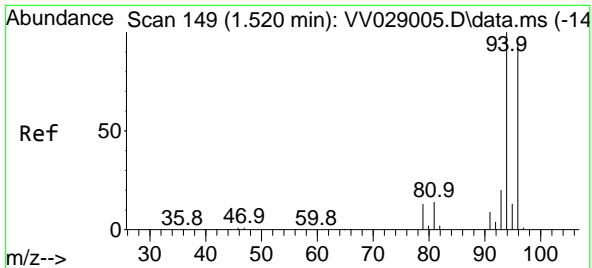
(#) = qualifier out of range (m) = manual integration (+) = signals summed

Data Path : Z:\voasrv\HPCHEM1\MSVOA_V\Data\VV111622\
 Data File : VV029007.D
 Acq On : 16 Nov 2022 11:16
 Operator : SY/MD
 Sample : N5590-16
 Misc : 25.0mL/MSVOA_V/WATER
 ALS Vial : 4 Sample Multiplier: 1

Instrument :
 MSVOA_V
 ClientSampleId :
 VHBLK001

Quant Time: Nov 17 02:51:23 2022
 Quant Method : Z:\voasrv\HPCHEM1\MSVOA_V\Method\SFAMVTR111122WMA.M
 Quant Title : TRACE VOA SFAM1.0
 QLast Update : Thu Nov 17 02:49:50 2022
 Response via : Initial Calibration

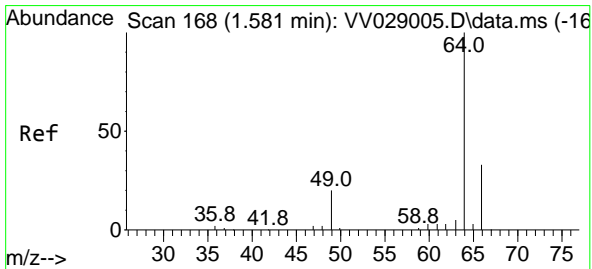
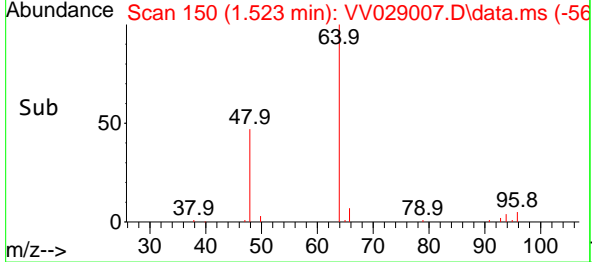
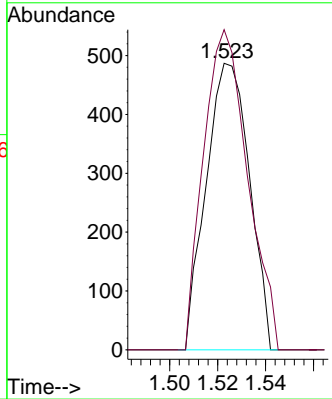
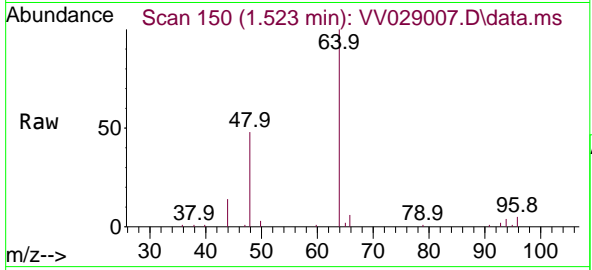




#6
 Bromomethane
 Concen: 0.048 ug/L
 RT: 1.523 min Scan# 111
 Delta R.T. 0.003 min
 Lab File: VV029007.D
 Acq: 16 Nov 2022 11:16

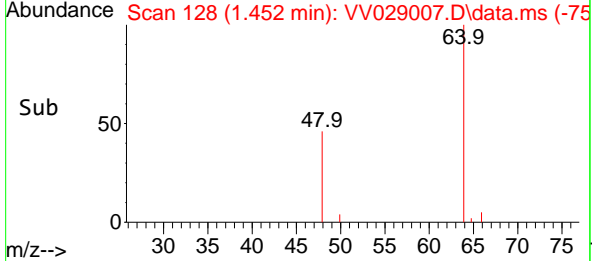
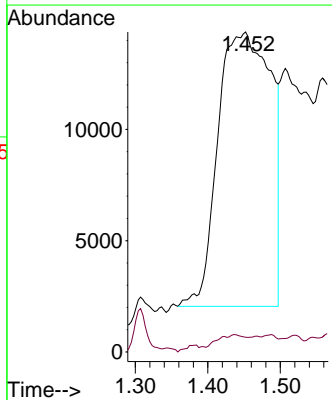
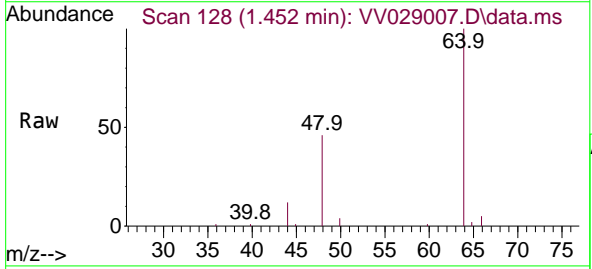
Instrument : MSVOA_V
 ClientSampleId : VHBLK001

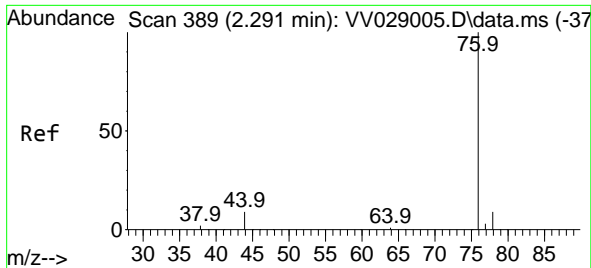
Tgt Ion: 94 Resp: 611
 Ion Ratio Lower Upper
 94 100
 96 111.7 68.5 127.3



#8
 Chloroethane
 Concen: 4.984 ug/L
 RT: 1.452 min Scan# 128
 Delta R.T. -0.129 min
 Lab File: VV029007.D
 Acq: 16 Nov 2022 11:16

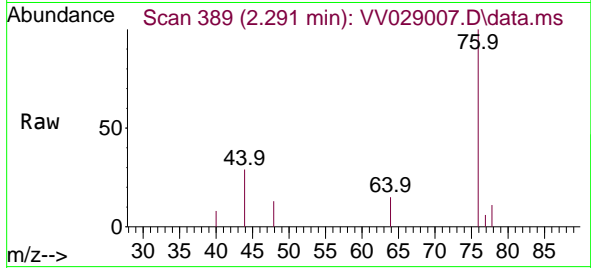
Tgt Ion: 64 Resp: 62679
 Ion Ratio Lower Upper
 64 100
 66 4.5 22.0 40.8



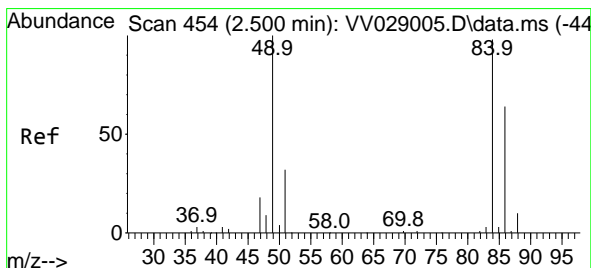
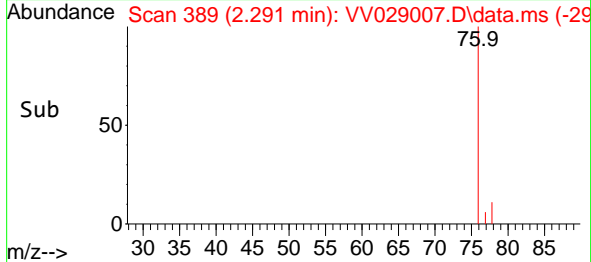
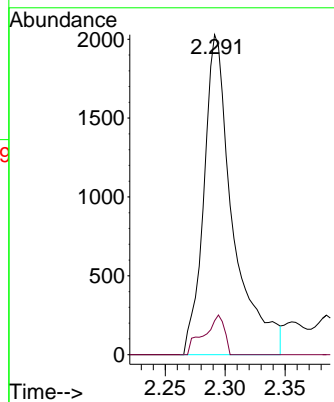


#14
 Carbon disulfide
 Concen: 0.059 ug/L
 RT: 2.291 min Scan# 389
 Delta R.T. -0.000 min
 Lab File: VV029007.D
 Acq: 16 Nov 2022 11:16

Instrument : MSVOA_V
 ClientSampleId : VHBLK001

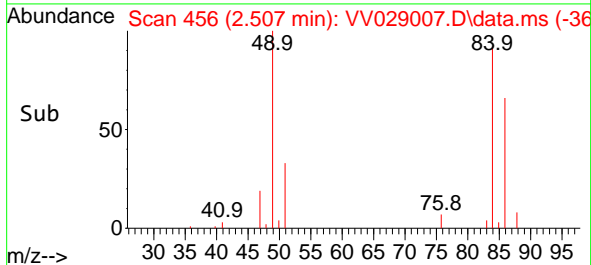
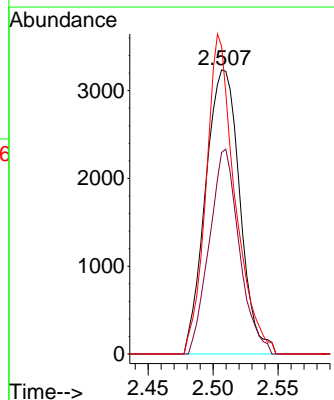
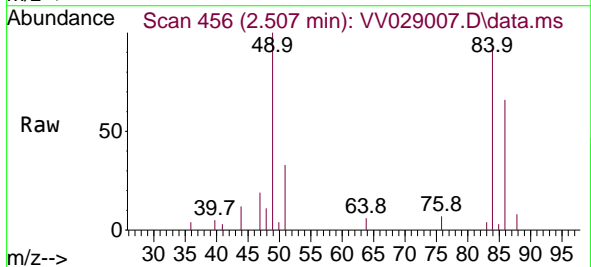


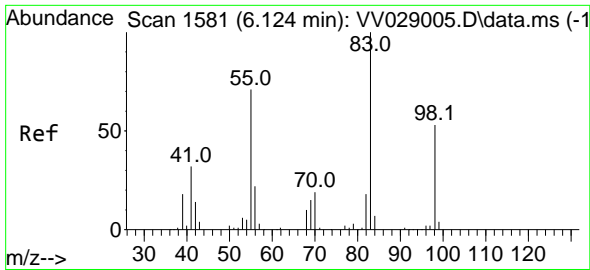
Tgt Ion: 76 Resp: 3424
 Ion Ratio Lower Upper
 76 100
 78 10.6 7.4 11.2



#16
 Methylene chloride
 Concen: 0.280 ug/L
 RT: 2.507 min Scan# 456
 Delta R.T. 0.006 min
 Lab File: VV029007.D
 Acq: 16 Nov 2022 11:16

Tgt Ion: 84 Resp: 5941
 Ion Ratio Lower Upper
 84 100
 86 71.0 45.8 85.0
 49 108.2 75.5 140.1

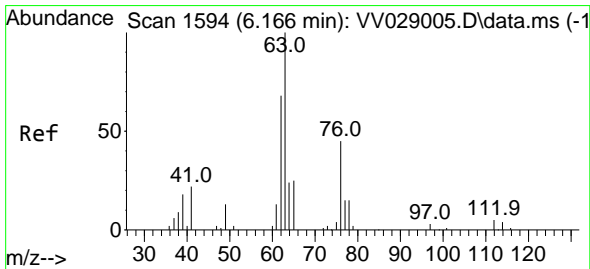
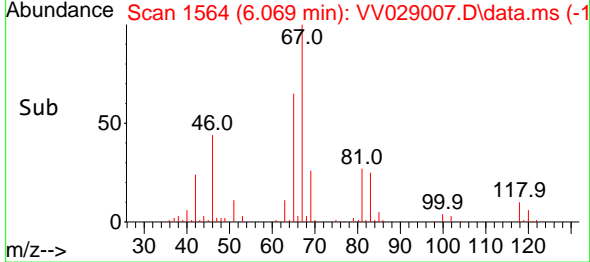
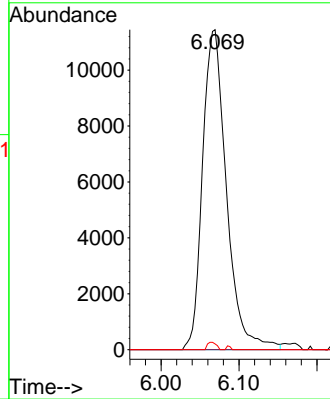
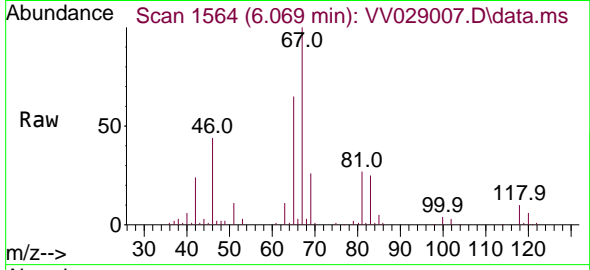




#35
 Methylcyclohexane
 Concen: 0.716 ug/L
 RT: 6.069 min Scan# 1581
 Delta R.T. -0.055 min
 Lab File: VV029007.D
 Acq: 16 Nov 2022 11:16

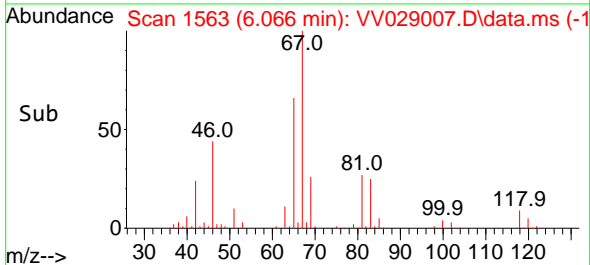
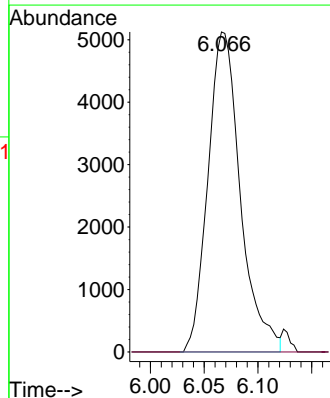
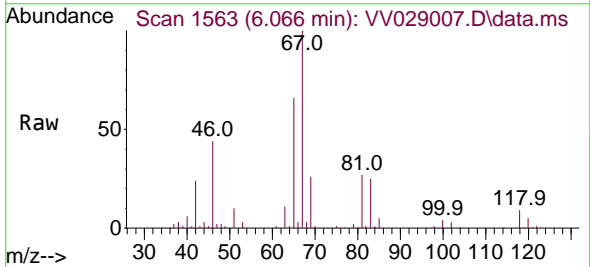
Instrument :
 MSVOA_V
 ClientSampleId :
 VHBLK001

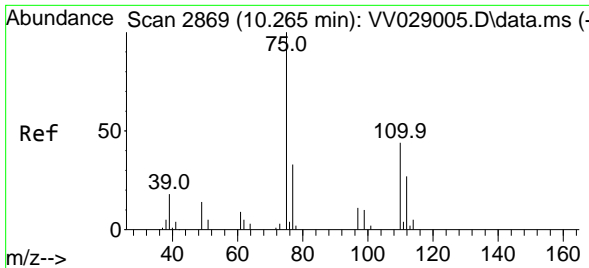
Tgt Ion: 83 Resp: 24439
 Ion Ratio Lower Upper
 83 100
 55 0.0 55.8 83.6#
 98 0.9 38.2 57.2#



#37
 1,2-Dichloropropane
 Concen: 0.614 ug/L
 RT: 6.066 min Scan# 1563
 Delta R.T. -0.100 min
 Lab File: VV029007.D
 Acq: 16 Nov 2022 11:16

Tgt Ion: 63 Resp: 10744
 Ion Ratio Lower Upper
 63 100
 112 0.4 4.0 6.0#

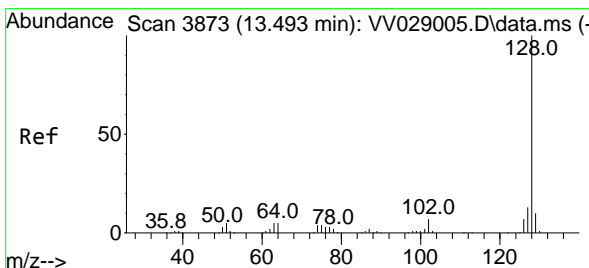
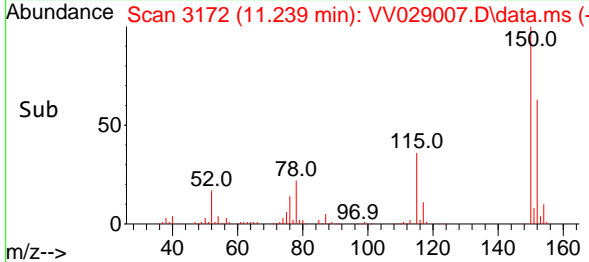
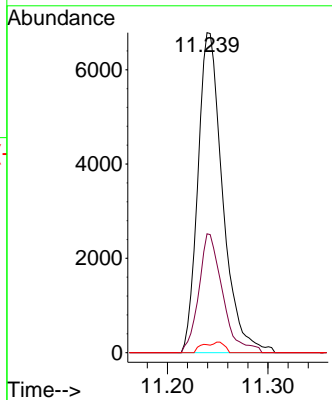
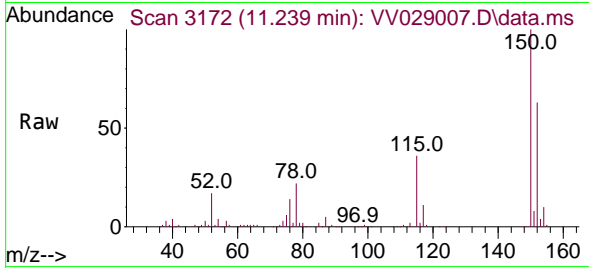




#61
 1,2,3-Trichloropropane
 Concen: 1.493 ug/L
 RT: 11.239 min Scan# 3172
 Delta R.T. 0.974 min
 Lab File: VV029007.D
 Acq: 16 Nov 2022 11:16

Instrument : MSVOA_V
 ClientSampleId : VHBLK001

Tgt Ion	Resp	Lower	Upper
75	11602		
75	100		
77	35.7	26.2	39.2
110	2.8	32.6	48.8#



#71
 Naphthalene
 Concen: 0.070 ug/L
 RT: 13.509 min Scan# 3878
 Delta R.T. 0.016 min
 Lab File: VV029007.D
 Acq: 16 Nov 2022 11:16

Tgt Ion	Resp	Lower	Upper
128	1835		
128	100		
129	0.0	8.8	13.2#
127	2.2	9.8	14.8#

