

Data Path : Z:\voasrv\HPCHEM1\MSVOA\_V\Data\VW111622\  
 Data File : VW029009.D  
 Acq On : 16 Nov 2022 12:03  
 Operator : SY/MD  
 Sample : N5593-16  
 Misc : 25.0mL/MSVOA\_V/WATER  
 ALS Vial : 6 Sample Multiplier: 1

Instrument :  
 MSVOA\_V  
 ClientSampleId :  
 VHBLK001

Integration Parameters: rteint.p

Integrator: RTE  
 Smoothing : ON Filtering: 5  
 Sampling : 1 Min Area: 3 % of largest Peak  
 Start Thrs: 0.1 Max Peaks: 100  
 Stop Thrs : 0 Peak Location: TOP

If leading or trailing edge < 100 prefer < Baseline drop else tangent >  
 Peak separation: 5

Method : Z:\voasrv\HPCHEM1\MSVOA\_V\Method\SFAMVTR111122WMA.M  
 Title : TRACE VOA SFAM1.0

Signal : TIC: VW029009.D\data.ms

peak #	R.T. min	first scan	max scan	last scan	PK TY	peak height	corr. area	corr. % max.	% of total
1	1.304	75	82	97	rBV	105284	113497	13.11%	1.628%
2	1.513	125	147	148	rBV	18284	50665	5.85%	0.727%
3	1.568	157	164	173	rVB	88430	99634	11.51%	1.429%
4	2.105	322	331	351	rVB	206523	318978	36.85%	4.575%
5	2.506	445	456	468	rVB2	9407	15923	1.84%	0.228%
6	3.937	879	901	951	rBV2	27764	205257	23.71%	2.944%
7	4.346	1013	1028	1063	rVB	141926	362771	41.91%	5.203%
8	5.047	1228	1246	1277	rBV2	347365	865592	100.00%	12.415%
9	5.616	1411	1423	1454	rBV	278921	579967	67.00%	8.319%
10	6.069	1551	1564	1596	rBV	184700	389277	44.97%	5.584%
11	6.985	1839	1849	1876	rBV	86685	169196	19.55%	2.427%
12	7.313	1935	1951	1977	rBV	446392	798569	92.26%	11.454%
13	7.622	2038	2047	2069	rBV	46726	89391	10.33%	1.282%
14	8.091	2180	2193	2234	rBV2	267754	686680	79.33%	9.849%
15	8.847	2417	2428	2464	rBV	405905	679252	78.47%	9.743%
16	10.210	2839	2852	2875	rBV	139449	224388	25.92%	3.218%
17	11.242	3161	3173	3196	rBV	404816	651770	75.30%	9.349%
18	11.615	3278	3289	3312	rBV	414695	671078	77.53%	9.625%

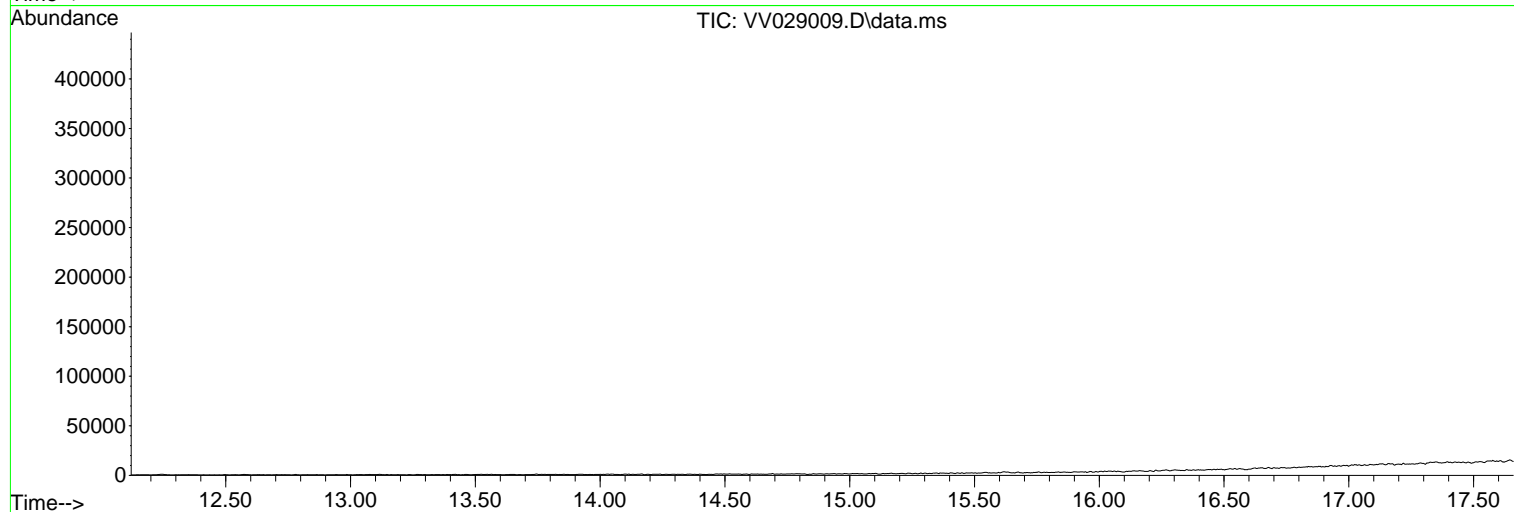
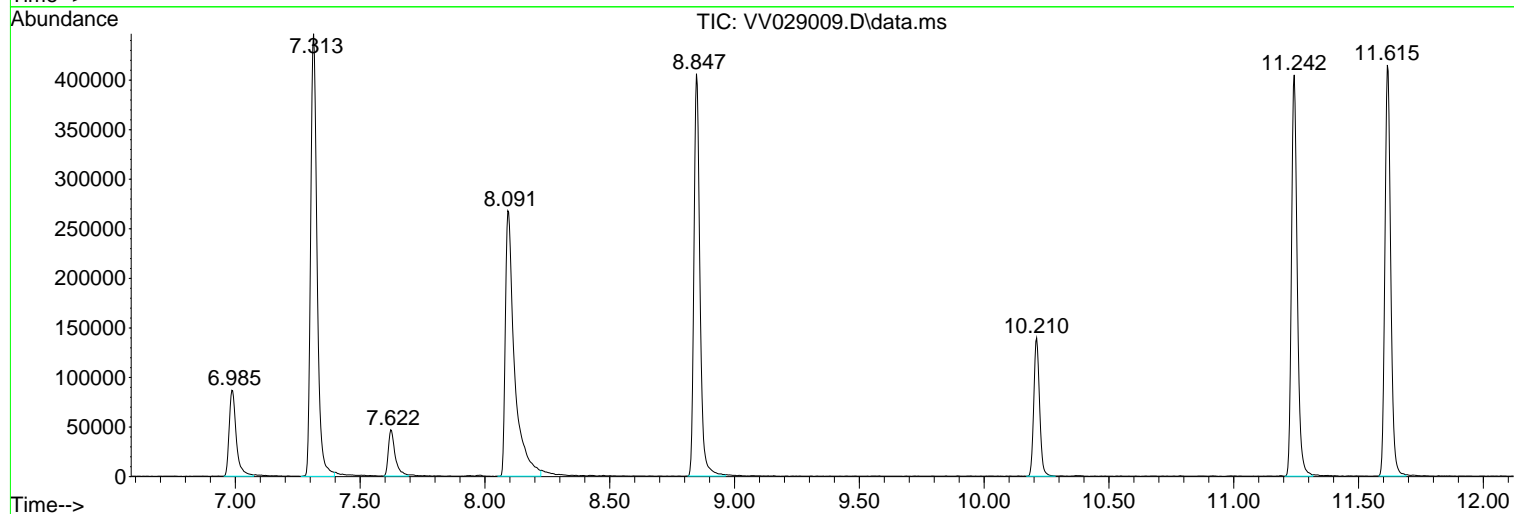
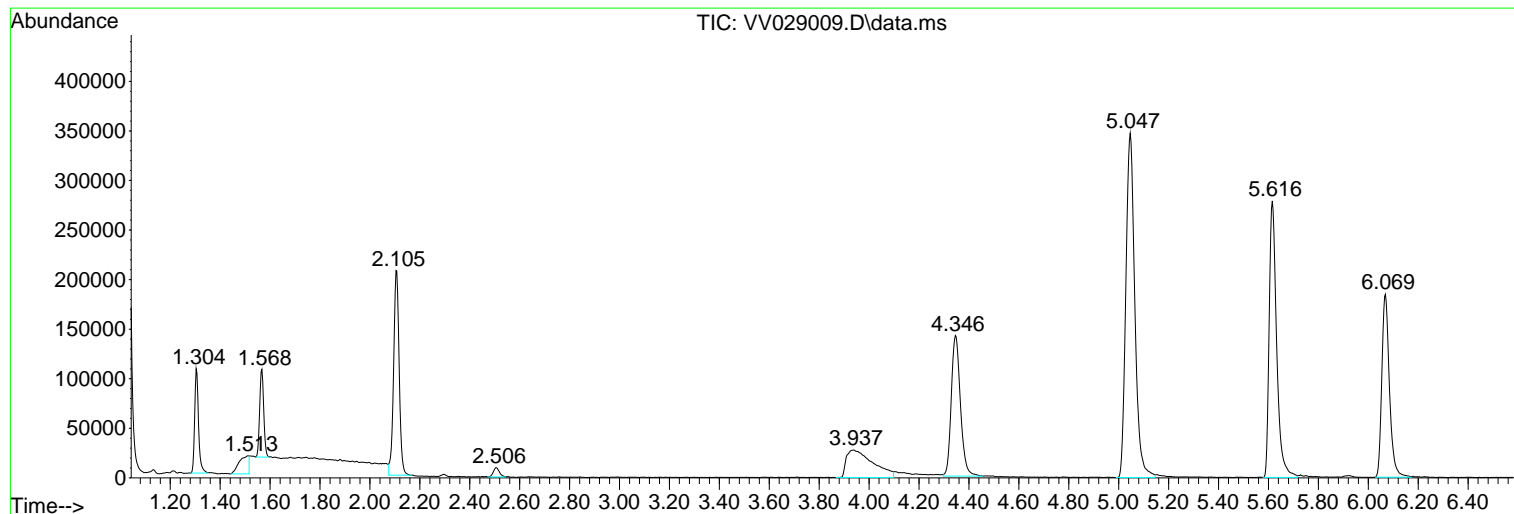
Sum of corrected areas: 6971885

Data Path : Z:\voasrv\HPCHEM1\MSVOA\_V\Data\VV111622\  
Data File : VV029009.D  
Acq On : 16 Nov 2022 12:03  
Operator : SY/MD  
Sample : N5593-16  
Misc : 25.0mL/MSVOA\_V/WATER  
ALS Vial : 6 Sample Multiplier: 1

Instrument :  
MSVOA\_V  
ClientSampleId :  
VHBLK001

Quant Method : Z:\voasrv\HPCHEM1\MSVOA\_V\Method\SFAMVTR111122WMA.M  
Quant Title : TRACE VOA SFAM1.0

TIC Library : C:\Database\NIST20.L  
TIC Integration Parameters: LSCINT.P



Data Path : Z:\voasrv\HPCHEM1\MSVOA\_V\Data\VV111622\  
Data File : VV029009.D  
Acq On : 16 Nov 2022 12:03  
Operator : SY/MD  
Sample : N5593-16  
Misc : 25.0mL/MSVOA\_V/WATER  
ALS Vial : 6 Sample Multiplier: 1

Instrument :  
MSVOA\_V  
ClientSampleId :  
VHBLK001

Quant Method : Z:\voasrv\HPCHEM1\MSVOA\_V\Method\SFAMVTR111122WMA.M  
Quant Title : TRACE VOA SFAM1.0

TIC Library : C:\Database\NIST20.L  
TIC Integration Parameters: LSCINT.P

No Library Search Compounds Detected

\*\*\*\*\*

Data Path : Z:\voasrv\HPCHEM1\MSVOA\_V\Data\VW111622\  
Data File : VW029009.D  
Acq On : 16 Nov 2022 12:03  
Operator : SY/MD  
Sample : N5593-16  
Misc : 25.0mL/MSVOA\_V/WATER  
ALS Vial : 6 Sample Multiplier: 1

Instrument :  
MSVOA\_V  
ClientSampleId :  
VHBLK001

Quant Method : Z:\voasrv\HPCHEM1\MSVOA\_V\Method\SFAMVTR111122WMA.M  
Quant Title : TRACE VOA SFAM1.0

TIC Library : C:\Database\NIST0.L  
TIC Integration Parameters: LSCINT.P

TIC Top Hit name	RT	EstConc	Units	Response	--Internal Standard--			
					#	RT	Resp	Conc

---