

Data Path : Z:\voasrv\HPCHEM1\MSVOA\_V\Data\VV111622\  
 Data File : VV029020.D  
 Acq On : 16 Nov 2022 16:26  
 Operator : SY/MD  
 Sample : N5620-11  
 Misc : 25.0mL/MSVOA\_V/WATER  
 ALS Vial : 17 Sample Multiplier: 1

Instrument :  
 MSVOA\_V  
 ClientSampleId :  
 BGCA8

Integration Parameters: rteint.p

Integrator: RTE  
 Smoothing : ON Filtering: 5  
 Sampling : 1 Min Area: 3 % of largest Peak  
 Start Thrs: 0.1 Max Peaks: 100  
 Stop Thrs : 0 Peak Location: TOP

If leading or trailing edge < 100 prefer < Baseline drop else tangent >  
 Peak separation: 5

Method : Z:\voasrv\HPCHEM1\MSVOA\_V\Method\SFAMVTR111122WMA.M  
 Title : TRACE VOA SFAM1.0

Signal : TIC: VV029020.D\data.ms

peak #	R.T. min	first scan	max scan	last scan	PK TY	peak height	corr. area	corr. % max.	% of total
1	1.240	57	62	75	rVB	9895	11993	1.52%	0.193%
2	1.304	75	82	101	rBV	62128	67384	8.54%	1.087%
3	1.503	123	144	146	rBV	14928	42747	5.42%	0.690%
4	1.565	157	163	175	rVB	72584	85031	10.78%	1.372%
5	2.105	322	331	346	rVB	132501	199593	25.30%	3.220%
6	3.912	882	893	894	rBV	32926	46682	5.92%	0.753%
7	4.082	938	946	978	rVB3	27963	95128	12.06%	1.535%
8	4.346	1013	1028	1066	rVB2	129695	342808	43.45%	5.530%
9	5.043	1227	1245	1277	rBV2	282801	730400	92.57%	11.782%
10	5.616	1411	1423	1453	rBV	277399	579122	73.40%	9.342%
11	6.066	1546	1563	1594	rBV	168544	357732	45.34%	5.771%
12	6.571	1706	1720	1737	rBV6	6159	14897	1.89%	0.240%
13	6.986	1838	1849	1873	rBV	62060	123122	15.60%	1.986%
14	7.137	1887	1896	1910	rVB3	10060	18571	2.35%	0.300%
15	7.314	1938	1951	1977	rBV	320079	579623	73.46%	9.350%
16	7.625	2038	2048	2070	rBV3	34130	65513	8.30%	1.057%
17	8.092	2182	2193	2248	rBV	312531	789021	100.00%	12.728%
18	8.847	2416	2428	2456	rBV	410997	683546	86.63%	11.027%
19	10.211	2840	2852	2875	rBV	144025	233800	29.63%	3.772%
20	11.243	3159	3173	3197	rBV	377336	612748	77.66%	9.885%
21	11.616	3275	3289	3314	rBV	314058	519583	65.85%	8.382%

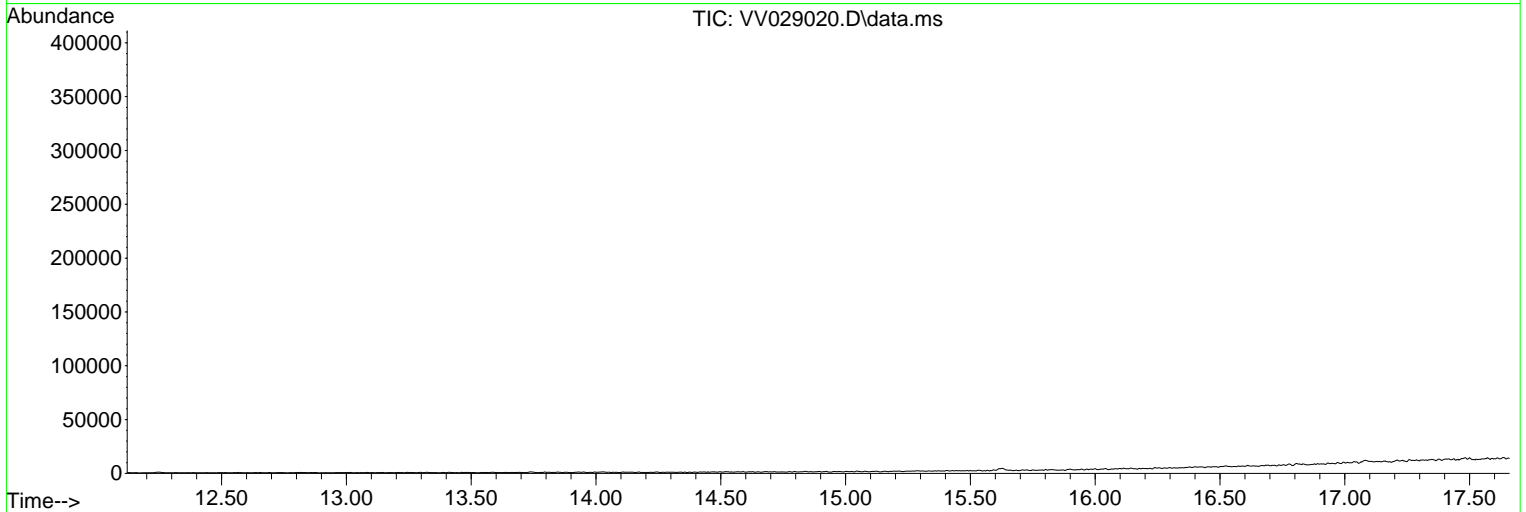
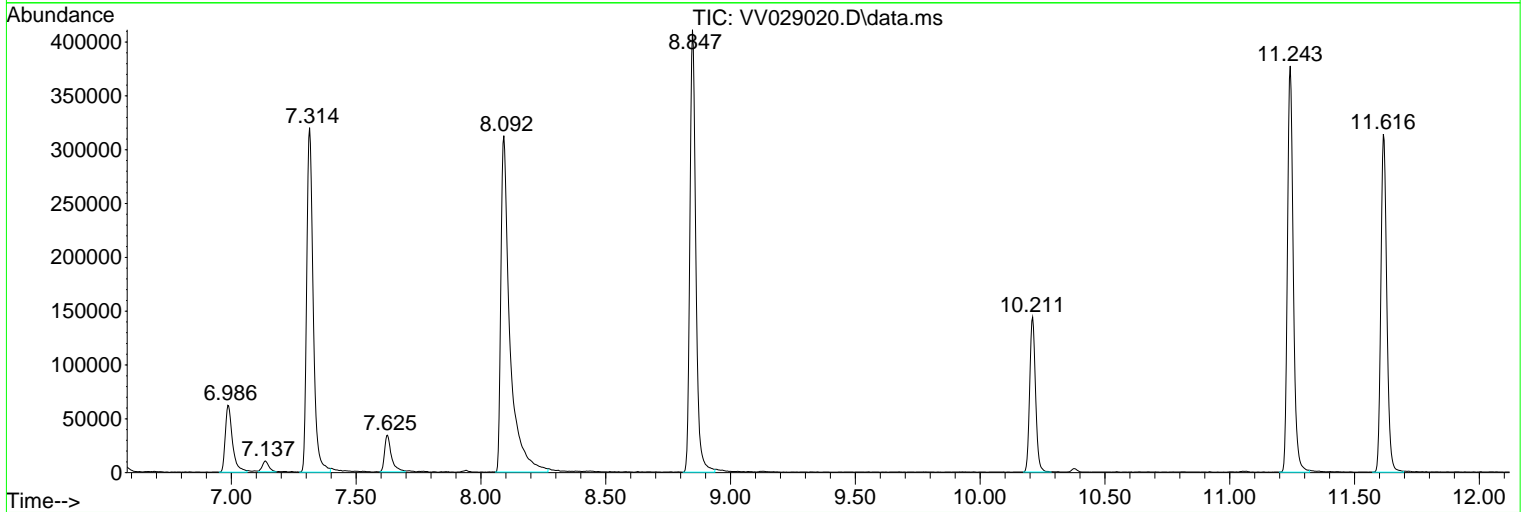
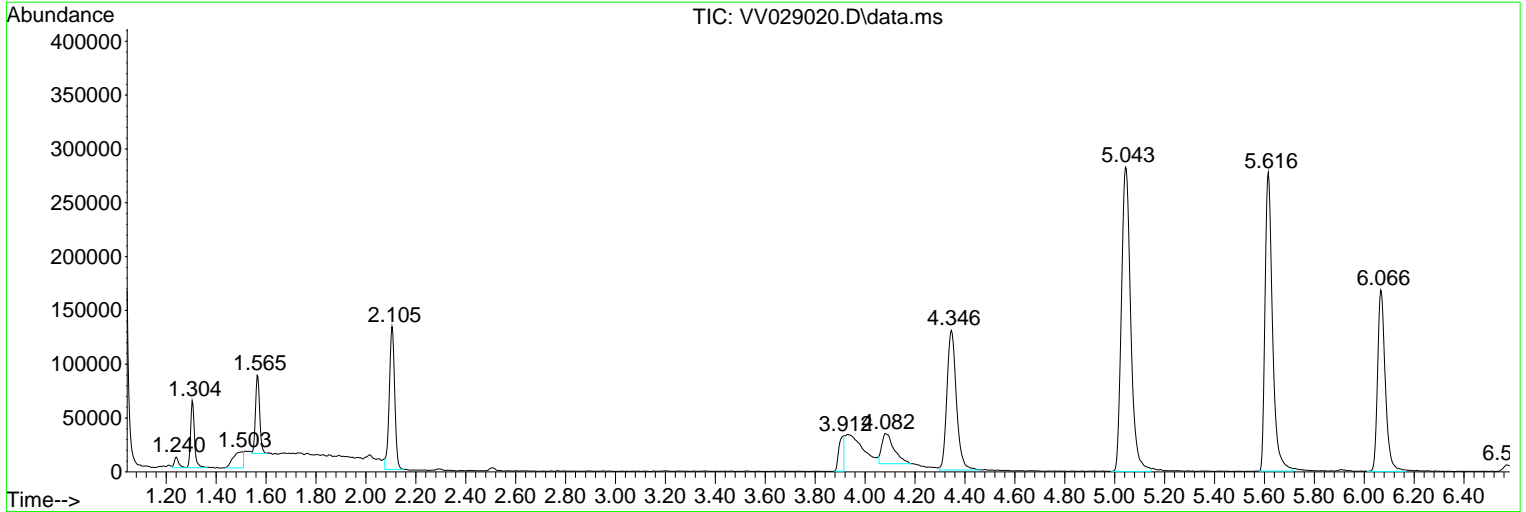
Sum of corrected areas: 6199044

Data Path : Z:\voasrv\HPCHEM1\MSVOA\_V\Data\VV111622\  
 Data File : VV029020.D  
 Acq On : 16 Nov 2022 16:26  
 Operator : SY/MD  
 Sample : N5620-11  
 Misc : 25.0mL/MSVOA\_V/WATER  
 ALS Vial : 17 Sample Multiplier: 1

Instrument :  
 MSVOA\_V  
 ClientSampleId :  
 BGCA8

Quant Method : Z:\voasrv\HPCHEM1\MSVOA\_V\Method\SFAMVTR111122WMA.M  
 Quant Title : TRACE VOA SFAM1.0

TIC Library : C:\Database\NIST20.L  
 TIC Integration Parameters: LSCINT.P



Data Path : Z:\voasrv\HPCHEM1\MSVOA\_V\Data\VV111622\  
 Data File : VV029020.D  
 Acq On : 16 Nov 2022 16:26  
 Operator : SY/MD  
 Sample : N5620-11  
 Misc : 25.0mL/MSVOA\_V/WATER  
 ALS Vial : 17 Sample Multiplier: 1

Instrument :  
 MSVOA\_V  
 ClientSampleId :  
 BGCA8

Quant Method : Z:\voasrv\HPCHEM1\MSVOA\_V\Method\SFAMVTR111122WMA.M  
 Quant Title : TRACE VOA SFAM1.0

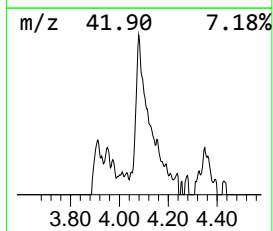
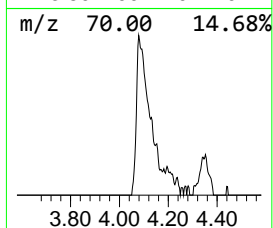
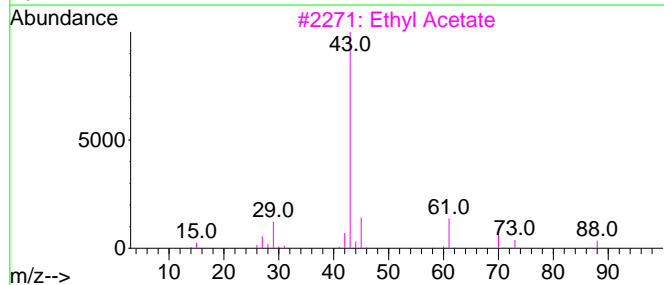
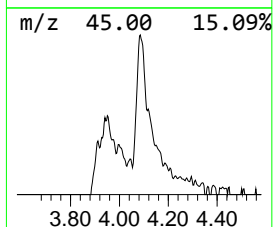
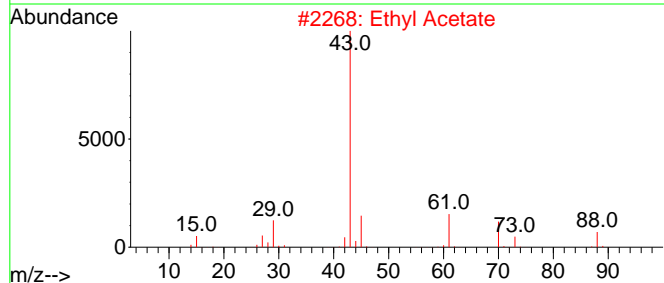
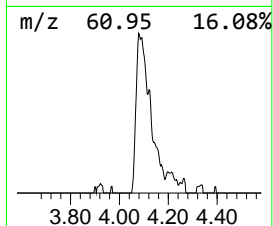
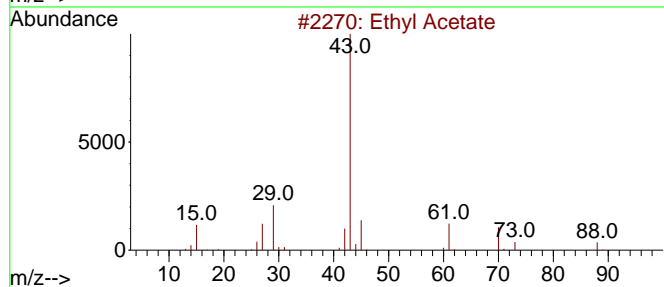
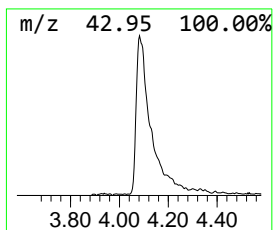
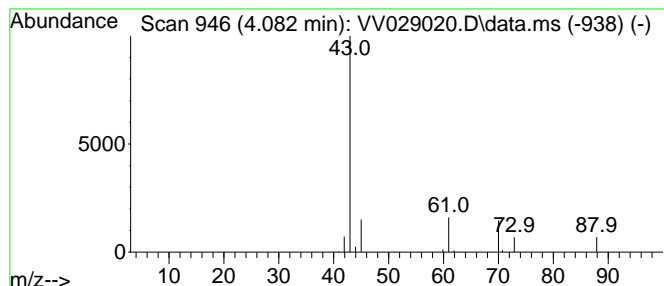
TIC Library : C:\Database\NIST20.L  
 TIC Integration Parameters: LSCINT.P

\*\*\*\*\*  
 Peak Number 1 Ethyl Acetate Concentration Rank 2

R.T.	EstConc	Area	Relative to ISTD	R.T.
4.082	0.82 ug/L	95128	1,4-Difluorobenzene	5.616

Hit#	of 5	Tentative ID	MW	MolForm	CAS#	Qual
1		Ethyl Acetate	88	C4H8O2	000141-78-6	90
2		Ethyl Acetate	88	C4H8O2	000141-78-6	86
3		Ethyl Acetate	88	C4H8O2	000141-78-6	78
4		Ethyl Acetate	88	C4H8O2	000141-78-6	78
5		CH3C(O)CH2CH2OH	88	C4H8O2	000590-90-9	72



Data Path : Z:\voasrv\HPCHEM1\MSVOA\_V\Data\VW111622\  
Data File : VW029020.D  
Acq On : 16 Nov 2022 16:26  
Operator : SY/MD  
Sample : N5620-11  
Misc : 25.0mL/MSVOA\_V/WATER  
ALS Vial : 17 Sample Multiplier: 1

Instrument :  
MSVOA\_V  
ClientSampleId :  
BGCA8

Quant Method : Z:\voasrv\HPCHEM1\MSVOA\_V\Method\SFAMVTR111122WMA.M  
Quant Title : TRACE VOA SFAM1.0

TIC Library : C:\Database\NIST0.L  
TIC Integration Parameters: LSCINT.P

TIC Top Hit name	RT	EstConc	Units	Response	--Internal Standard--			
					#	RT	Resp	Conc
Ethyl Acetate	4.082	0.8	ug/L	95128	1	5.616	579122	5.0