

Data Path : Z:\VOASRV\HPCHEM1\MSVOA V\DATA\VV111718\
 Data File : VV008606.D
 Acq On : 17 Nov 2018 01:54
 Operator : SY/MD
 Sample : J5947-07
 Misc : 25.0 mL/MSVOA V/WATER
 ALS Vial : 28 Sample Multiplier: 1

Instrument :
 MSVOA_V
 ClientSampled :
 F9C07

Integration Parameters: rteint.p
 Integrator: RTE
 Smoothing : ON Filtering: 5
 Sampling : 1 Min Area: 3 % of largest Peak
 Start Thrs: 0.1 Max Peaks: 100
 Stop Thrs : 0 Peak Location: TOP

If leading or trailing edge < 100 prefer < Baseline drop else tangent >
 Peak separation: 5

Method : Z:\VOASRV\HPCHEM1\MSVOA_V\METHOD\SOMVTR111718WMA.M
 Title : TRACE VOA SOM01.0

Signal : TIC

peak #	R.T. min	first scan	max scan	last scan	PK TY	peak height	corr. area	corr. % max.	% of total
1	1.319	63	71	84	rVB	58247	70738	14.08%	1.643%
2	1.585	148	154	162	rVB	49534	52617	10.47%	1.222%
3	2.135	314	325	339	rBV	98208	141905	28.25%	3.296%
4	3.968	880	895	926	rBV2	58620	206497	41.11%	4.796%
5	4.405	1014	1031	1050	rBV	85199	205903	40.99%	4.782%
6	4.727	1118	1131	1148	rVB4	10014	25695	5.12%	0.597%
7	5.100	1231	1247	1271	rBV3	213898	501365	99.81%	11.644%
8	5.669	1406	1424	1443	rBV	189961	374231	74.50%	8.692%
9	6.122	1551	1565	1590	rVB2	119094	238649	47.51%	5.543%
10	7.032	1836	1848	1863	rBV3	55143	100667	20.04%	2.338%
11	7.363	1938	1951	1968	rBV	246180	430379	85.68%	9.996%
12	7.669	2036	2046	2062	rBV2	32571	57072	11.36%	1.326%
13	8.019	2146	2155	2169	rVB2	40791	69469	13.83%	1.613%
14	8.141	2181	2193	2221	rBV	253092	502328	100.00%	11.667%
15	8.897	2416	2428	2453	rBV	267310	440399	87.67%	10.228%
16	10.263	2842	2853	2867	rBV	80679	130285	25.94%	3.026%
17	11.299	3163	3175	3198	rBV	239724	395561	78.75%	9.187%
18	11.595	3258	3267	3275	rVV6	2984	5523	1.10%	0.128%
19	11.675	3279	3292	3320	rVB	213546	356355	70.94%	8.276%

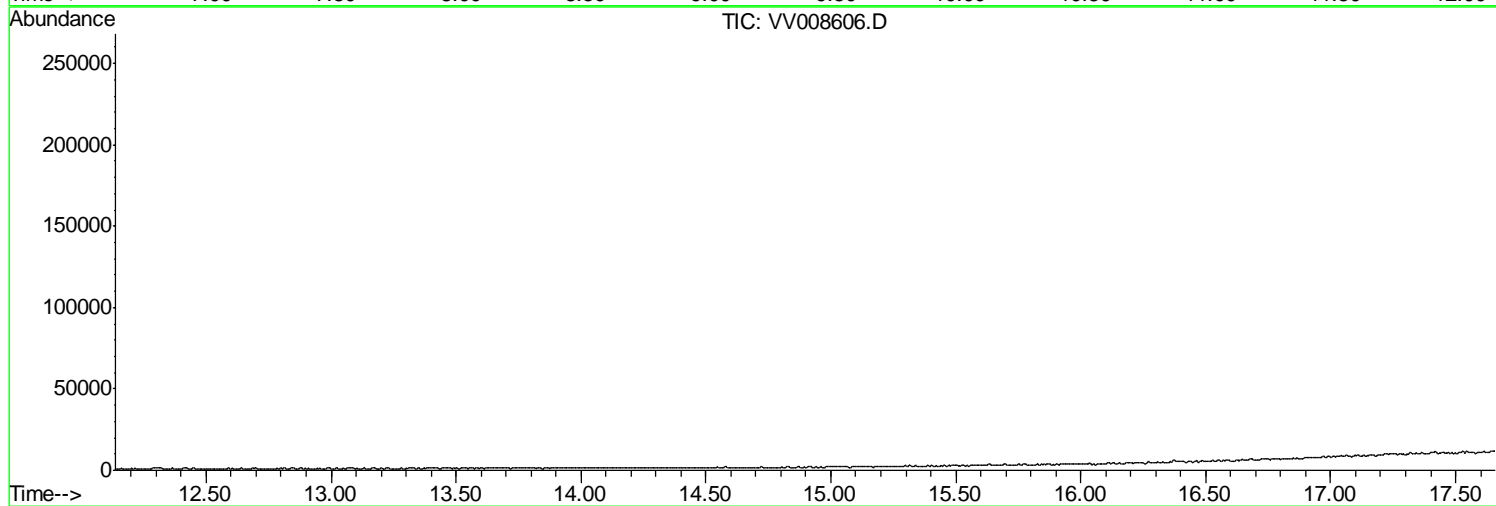
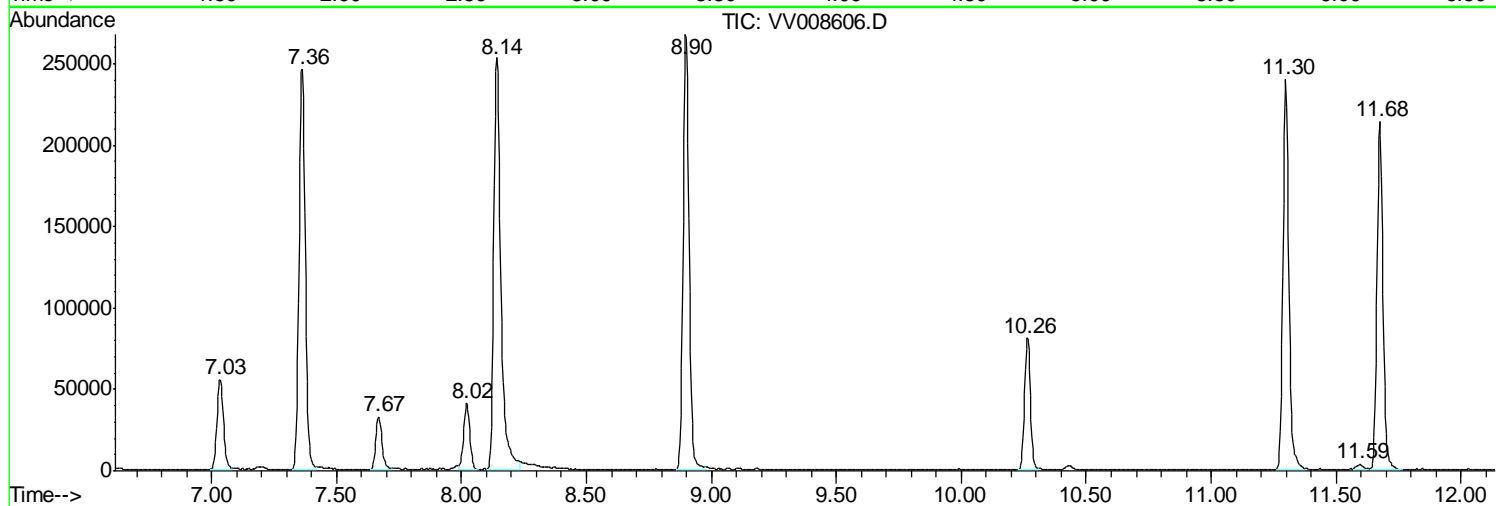
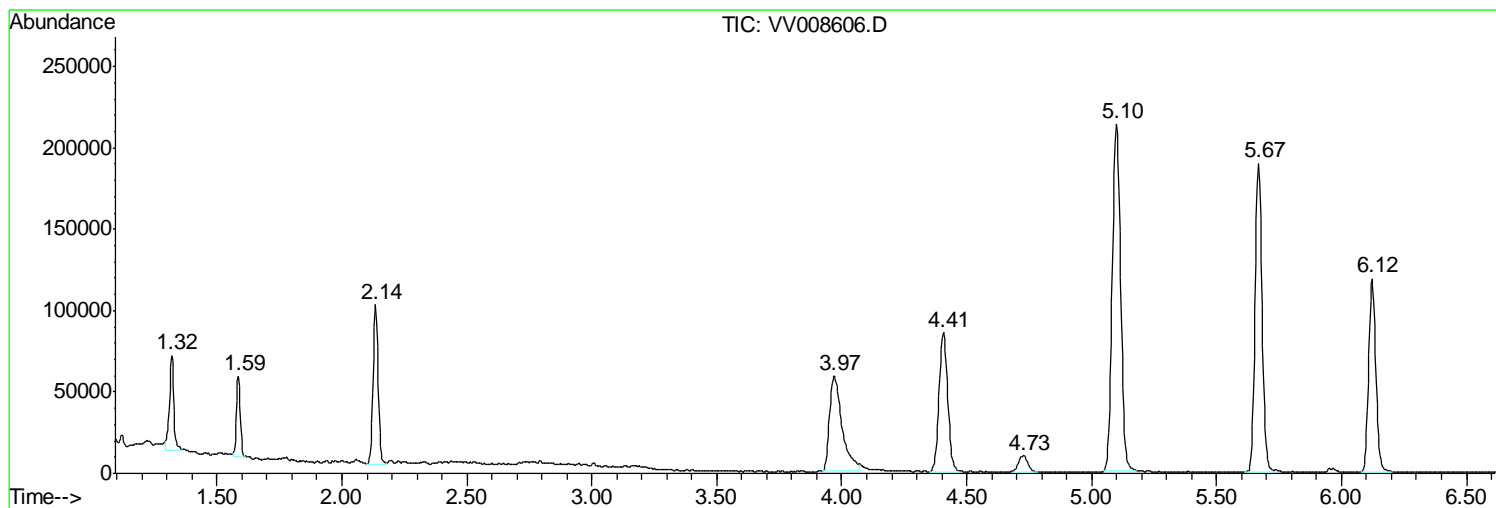
Sum of corrected areas: 4305638

Data Path : Z:\VOASRV\HPCHEM1\MSVOA V\DATA\VV111718\
Data File : VV008606.D
Acq On : 17 Nov 2018 01:54
Operator : SY/MD
Sample : J5947-07
Misc : 25.0 mL/MSVOA V/WATER
ALS Vial : 28 Sample Multiplier: 1

Instrument :
MSVOA_V
ClientSampled :
F9C07

Quant Method : Z:\VOASRV\HPCHEM1\MSVOA_V\METHOD\SOMVTR111718WMA.M
Quant Title : TRACE VOA SOM01.0

TIC Library : C:\DATABASE\NIST11.L
TIC Integration Parameters: LSCINT.P



Data Path : Z:\VOASRV\HPCHEM1\MSVOA_V\DATA\VV111718\
Data File : VV008606.D
Acq On : 17 Nov 2018 01:54
Operator : SY/MD
Sample : J5947-07
Misc : 25.0 mL/MSVOA_V/WATER
ALS Vial : 28 Sample Multiplier: 1

Instrument :
MSVOA_V
ClientSampleId :
F9C07

Quant Method : Z:\VOASRV\HPCHEM1\MSVOA_V\METHOD\SOMVTR111718WMA.M
Quant Title : TRACE VOA SOM01.0

TIC Library : C:\DATABASE\NIST11.L
TIC Integration Parameters: LSCINT.P

No Library Search Compounds Detected

Data Path : Z:\VOASRV\HPCHEM1\MSVOA_V\DATA\VV111718\
Data File : VV008606.D
Acq On : 17 Nov 2018 01:54
Operator : SY/MD
Sample : J5947-07
Misc : 25.0 mL/MSVOA_V/WATER
ALS Vial : 28 Sample Multiplier: 1

Instrument :
MSVOA_V
ClientSampleId :
F9C07

Quant Method : Z:\VOASRV\HPCHEM1\MSVOA_V\METHOD\SOMVTR111718WMA.M
Quant Title : TRACE VOA SOM01.0

TIC Library : C:\DATABASE\NIST11.L
TIC Integration Parameters: LSCINT.P

TIC Top Hit name	RT	EstConc	Units	Response	--Internal Standard--			
					#	RT	Resp	Conc
