

Data Path : Z:\voasrv\HPCHEM1\MSVOA_V\Data\VW111722\
 Data File : VV029086.D
 Acq On : 18 Nov 2022 00:34
 Operator : SY/MD
 Sample : N5687-08
 Misc : 25.0mL/MSVOA_V/WATER
 ALS Vial : 34 Sample Multiplier: 1

Instrument :
 MSVOA_V
 ClientSampleId :
 BGCD1

Quant Time: Nov 18 06:01:20 2022
 Quant Method : Z:\voasrv\HPCHEM1\MSVOA_V\Method\SFAMVTR111122WMA.M
 Quant Title : TRACE VOA SFAM1.0
 QLast Update : Fri Nov 18 04:35:43 2022
 Response via : Initial Calibration

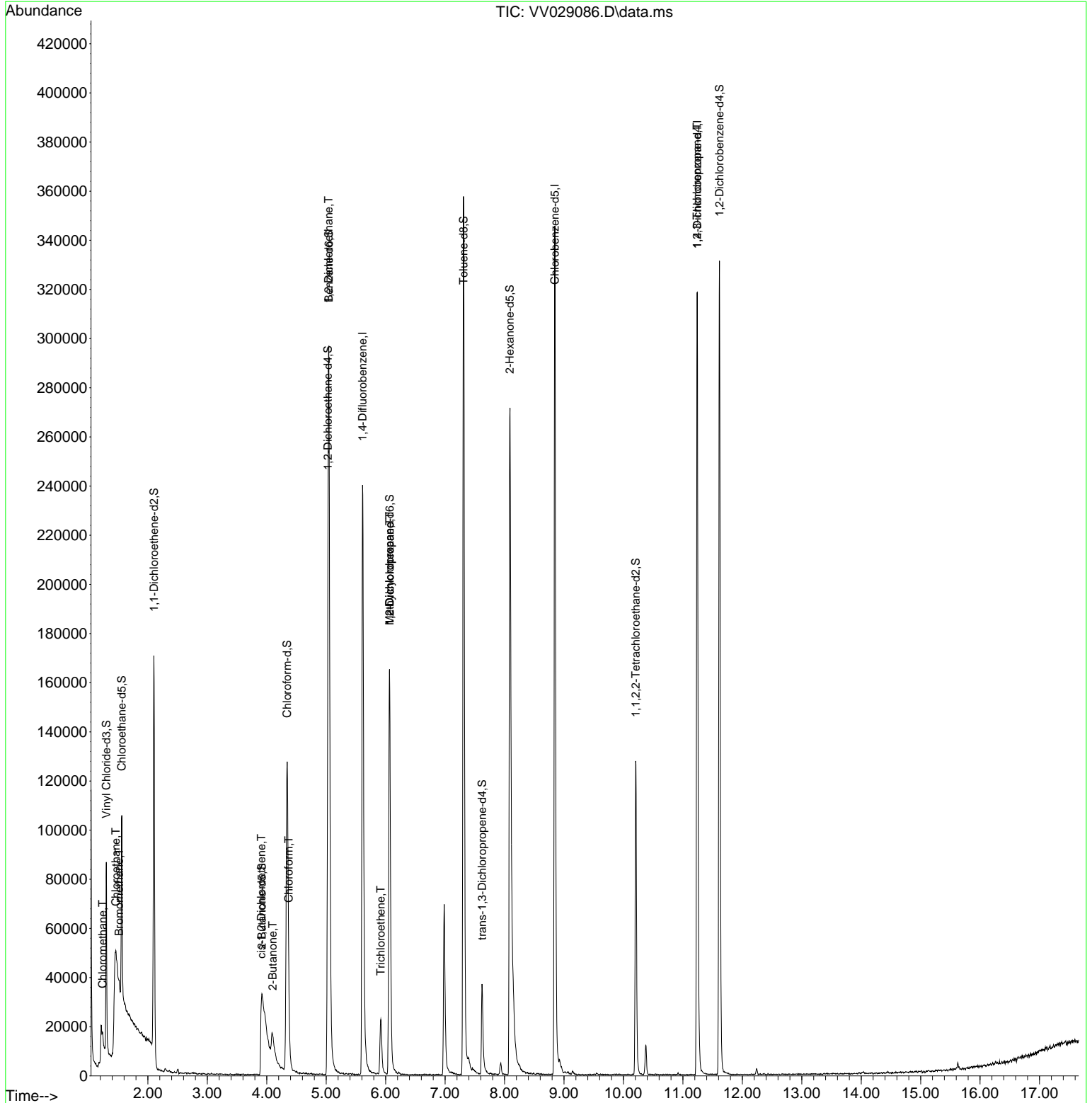
Compound	R.T.	QIon	Response	Conc	Units	Dev(Min)
Internal Standards						
1) 1,4-Difluorobenzene	5.613	114	235993	5.000	ug/L	0.00
28) Chlorobenzene-d5	8.847	117	212648	5.000	ug/L	0.00
58) 1,4-Dichlorobenzene-d4	11.243	152	98543	5.000	ug/L	0.00
System Monitoring Compounds						
4) Vinyl Chloride-d3	1.301	65	49193	3.419	ug/L	0.00
Spiked Amount	5.000	Range 40 - 130	Recovery	=	68.400%	
7) Chloroethane-d5	1.561	69	46907	3.709	ug/L	0.00
Spiked Amount	5.000	Range 65 - 130	Recovery	=	74.200%	
11) 1,1-Dichloroethene-d2	2.102	63	77882	2.970	ug/L	0.00
Spiked Amount	5.000	Range 60 - 125	Recovery	=	59.400%#	
20) 2-Butanone-d5	3.918	46	31751	13.184	ug/L	0.02
Spiked Amount	50.000	Range 40 - 130	Recovery	=	26.360%#	
24) Chloroform-d	4.343	84	138448	4.687	ug/L	0.00
Spiked Amount	5.000	Range 70 - 125	Recovery	=	93.800%	
26) 1,2-Dichloroethane-d4	5.031	65	66238	4.984	ug/L	0.00
Spiked Amount	5.000	Range 70 - 130	Recovery	=	99.600%	
32) Benzene-d6	5.044	84	288355	4.543	ug/L	0.00
Spiked Amount	5.000	Range 70 - 125	Recovery	=	90.800%	
36) 1,2-Dichloropropane-d6	6.066	67	85911	4.847	ug/L	0.00
Spiked Amount	5.000	Range 60 - 140	Recovery	=	97.000%	
41) Toluene-d8	7.310	98	259502	4.542	ug/L	0.00
Spiked Amount	5.000	Range 70 - 130	Recovery	=	90.800%	
43) trans-1,3-Dichloroprop...	7.622	79	24398	4.221	ug/L	0.00
Spiked Amount	5.000	Range 55 - 130	Recovery	=	84.400%	
46) 2-Hexanone-d5	8.088	63	118803	48.148	ug/L	0.00
Spiked Amount	50.000	Range 45 - 130	Recovery	=	96.300%	
56) 1,1,2,2-Tetrachloroeth...	10.207	84	63645	5.179	ug/L	0.00
Spiked Amount	5.000	Range 65 - 120	Recovery	=	103.600%	
66) 1,2-Dichlorobenzene-d4	11.616	152	98493	5.587	ug/L	0.00
Spiked Amount	5.000	Range 80 - 120	Recovery	=	111.800%	
Target Compounds						
3) Chloromethane	1.240	50	2242	0.137	ug/L	85
6) Bromomethane	1.516	94	616	0.055	ug/L #	50
8) Chloroethane	1.462	64	159185	14.546	ug/L #	53
21) 2-Butanone	4.098	43	25673	10.704	ug/L #	51
22) cis-1,2-Dichloroethene	3.909	96	2338	0.139	ug/L	96
25) Chloroform	4.368	83	9088	0.320	ug/L	93
27) 1,2-Dichloroethane	5.040	62	1317	0.090	ug/L #	70
34) Trichloroethene	5.918	95	8987	0.540	ug/L	93
35) Methylcyclohexane	6.066	83	21630	0.740	ug/L #	21
37) 1,2-Dichloropropane	6.066	63	8752	0.584	ug/L #	85
61) 1,2,3-Trichloropropane	11.239	75	10094	1.499	ug/L #	64

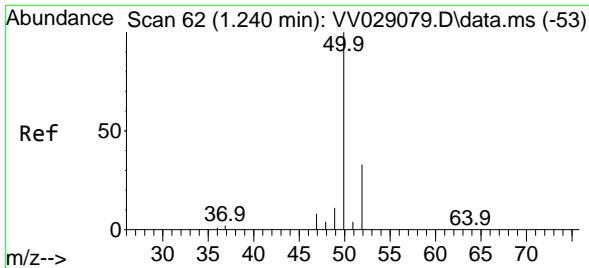
(#) = qualifier out of range (m) = manual integration (+) = signals summed

Data Path : Z:\voasrv\HPCHEM1\MSVOA_V\Data\VV111722\
 Data File : VV029086.D
 Acq On : 18 Nov 2022 00:34
 Operator : SY/MD
 Sample : N5687-08
 Misc : 25.0mL/MSVOA_V/WATER
 ALS Vial : 34 Sample Multiplier: 1

Instrument :
 MSVOA_V
 ClientSampleId :
 BGCD1

Quant Time: Nov 18 06:01:20 2022
 Quant Method : Z:\voasrv\HPCHEM1\MSVOA_V\Method\SFAMVTR111122WMA.M
 Quant Title : TRACE VOA SFAM1.0
 QLast Update : Fri Nov 18 04:35:43 2022
 Response via : Initial Calibration

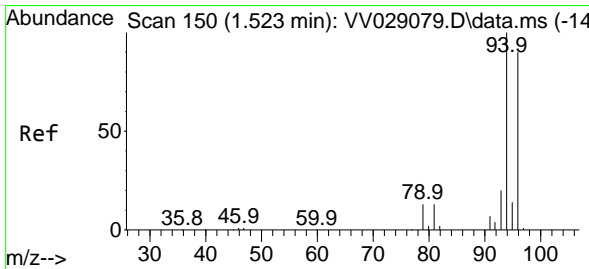
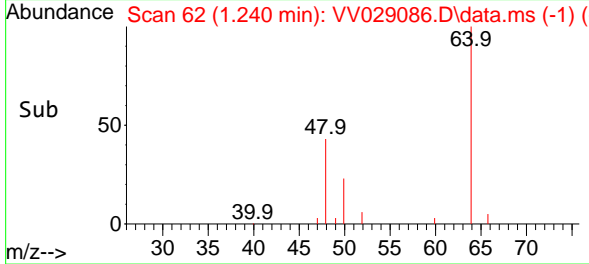
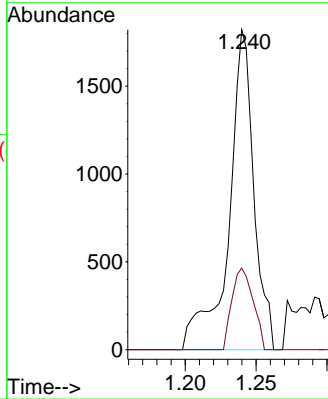
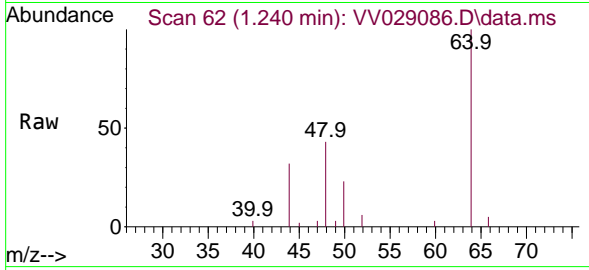




#3
 Chloromethane
 Concen: 0.137 ug/L
 RT: 1.240 min Scan# 61
 Delta R.T. 0.000 min
 Lab File: VV029086.D
 Acq: 18 Nov 2022 00:34

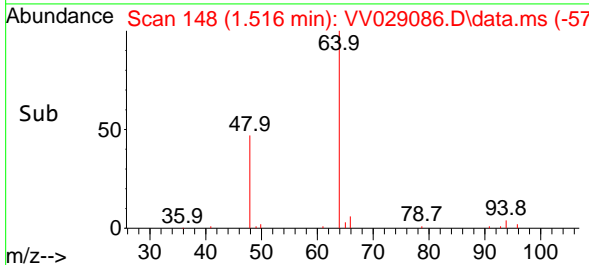
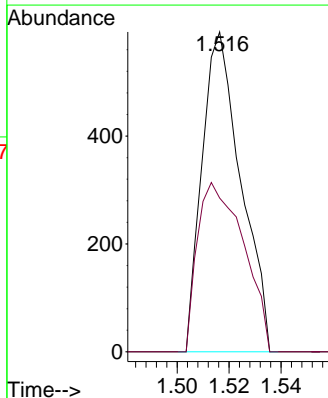
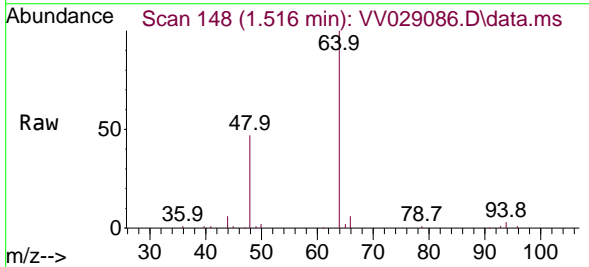
Instrument : MSVOA_V
 ClientSampleId : BGCD1

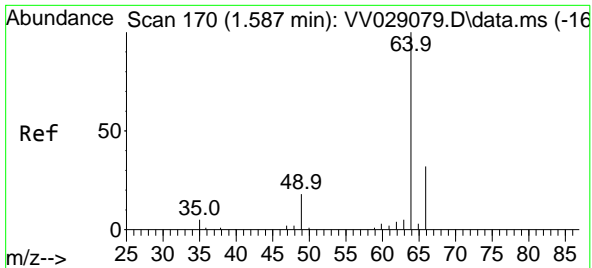
Tgt Ion: 50 Resp: 2242
 Ion Ratio Lower Upper
 50 100
 52 25.5 23.7 43.9



#6
 Bromomethane
 Concen: 0.055 ug/L
 RT: 1.516 min Scan# 148
 Delta R.T. -0.006 min
 Lab File: VV029086.D
 Acq: 18 Nov 2022 00:34

Tgt Ion: 94 Resp: 616
 Ion Ratio Lower Upper
 94 100
 96 48.1 68.5 127.3#

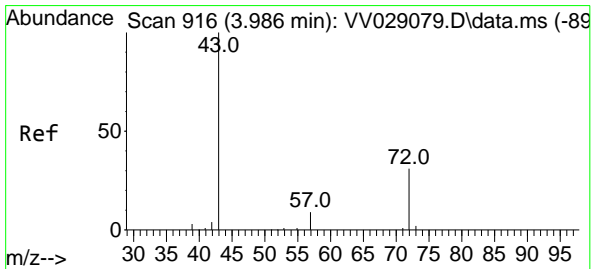
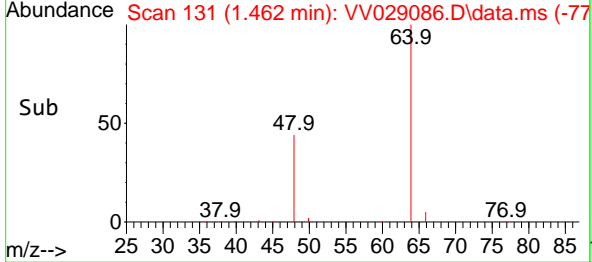
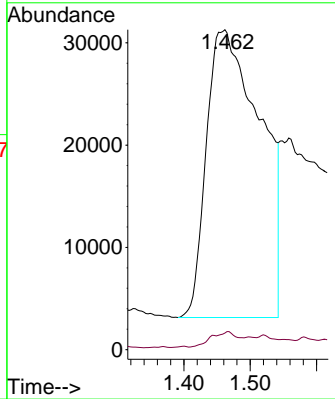
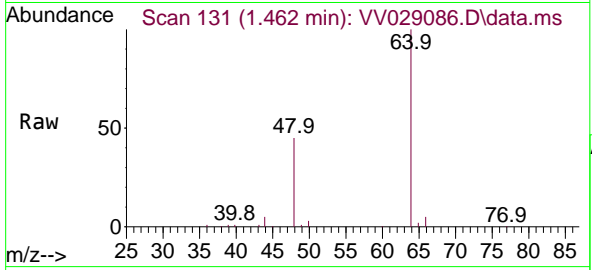




#8
 Chloroethane
 Concen: 14.546 ug/L
 RT: 1.462 min Scan# 11
 Delta R.T. -0.125 min
 Lab File: VV029086.D
 Acq: 18 Nov 2022 00:34

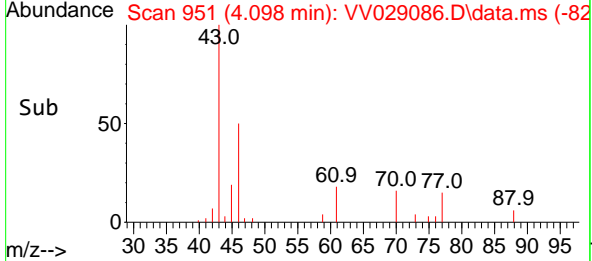
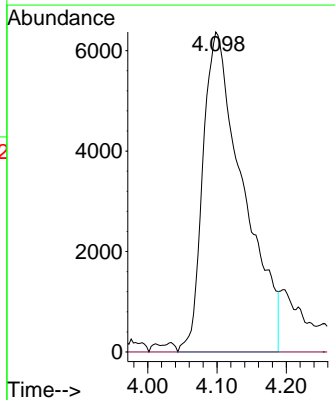
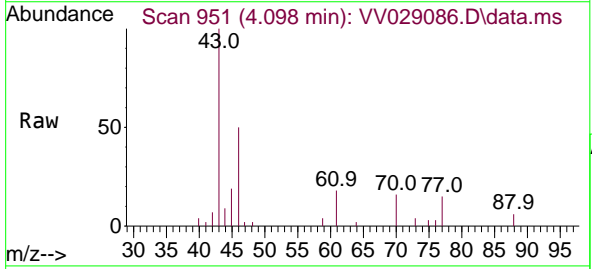
Instrument : MSVOA_V
 ClientSampleId : BGCD1

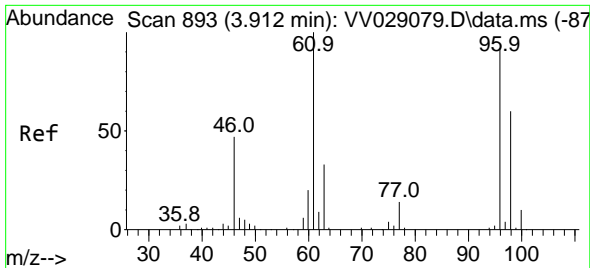
Tgt Ion: 64 Resp: 159185
 Ion Ratio Lower Upper
 64 100
 66 5.2 22.0 40.8#



#21
 2-Butanone
 Concen: 10.704 ug/L
 RT: 4.098 min Scan# 951
 Delta R.T. 0.113 min
 Lab File: VV029086.D
 Acq: 18 Nov 2022 00:34

Tgt Ion: 43 Resp: 25673
 Ion Ratio Lower Upper
 43 100
 72 0.0 11.9 35.9#



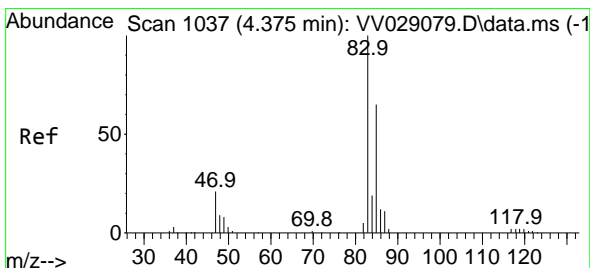
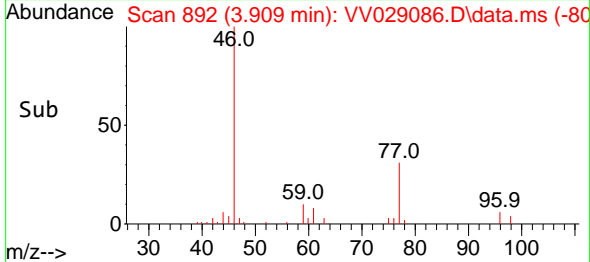
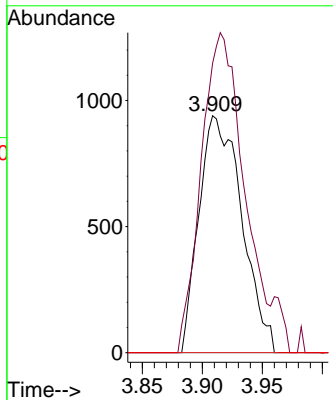
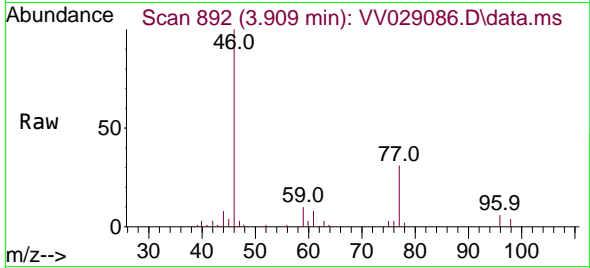


#22
 cis-1,2-Dichloroethene
 Concen: 0.139 ug/L
 RT: 3.909 min Scan# 891
 Delta R.T. -0.003 min
 Lab File: VV029086.D
 Acq: 18 Nov 2022 00:34

Instrument : MSVOA_V
 ClientSampleId : BGCD1

Tgt Ion: 96 Resp: 2338

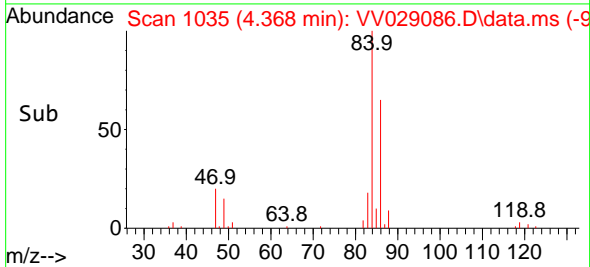
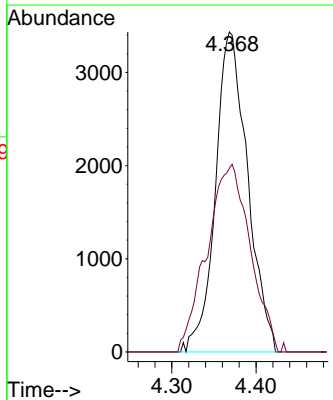
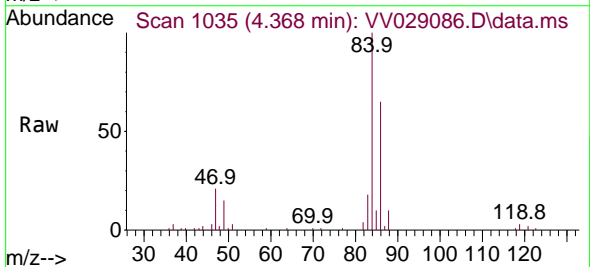
Ion	Ratio	Lower	Upper
96	100		
61	122.1	82.3	152.9
68	0.0	0.0	0.0

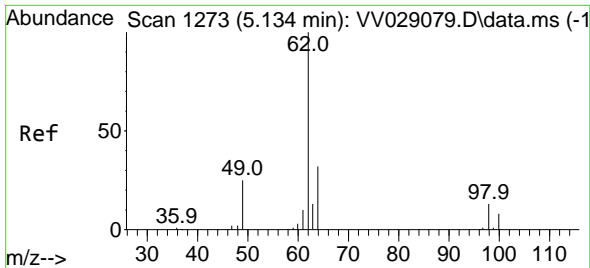


#25
 Chloroform
 Concen: 0.320 ug/L
 RT: 4.368 min Scan# 1035
 Delta R.T. -0.006 min
 Lab File: VV029086.D
 Acq: 18 Nov 2022 00:34

Tgt Ion: 83 Resp: 9088

Ion	Ratio	Lower	Upper
83	100		
85	57.4	43.7	81.1

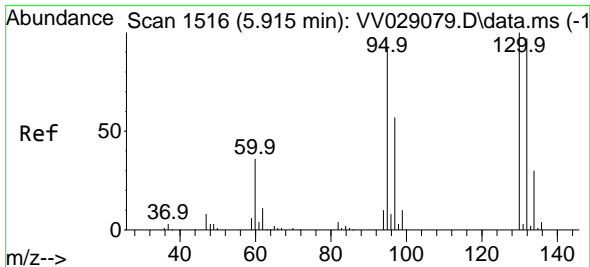
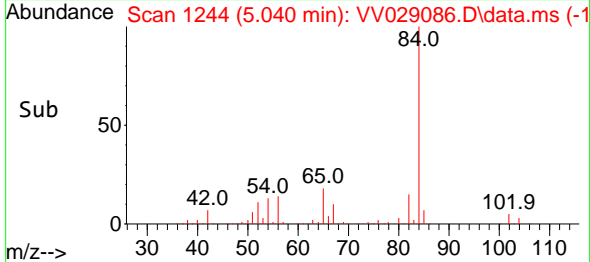
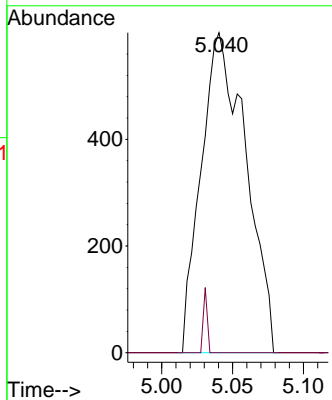
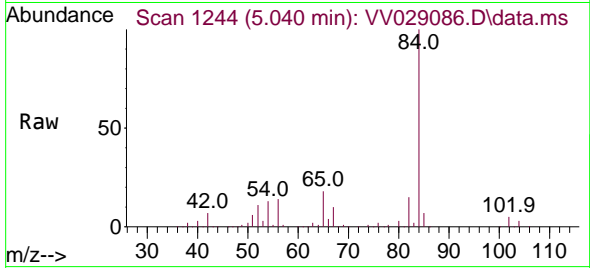




#27
 1,2-Dichloroethane
 Concen: 0.090 ug/L
 RT: 5.040 min Scan# 11
 Delta R.T. -0.093 min
 Lab File: VV029086.D
 Acq: 18 Nov 2022 00:34

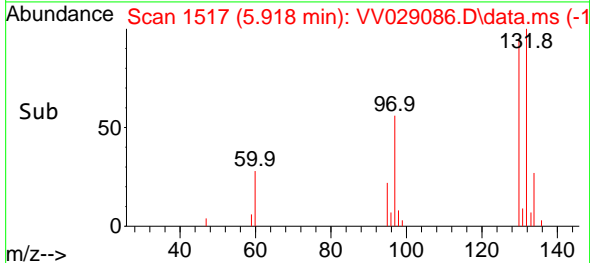
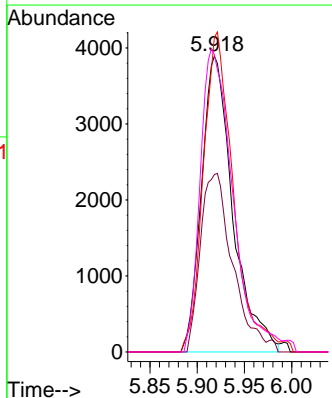
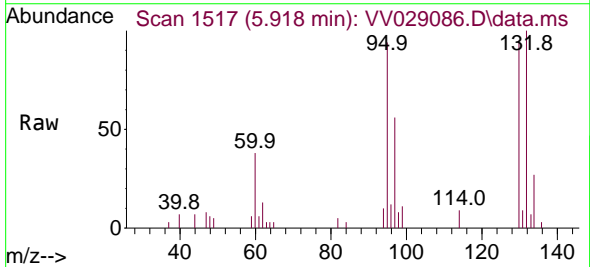
Instrument : MSVOA_V
 ClientSampleId : BGCD1

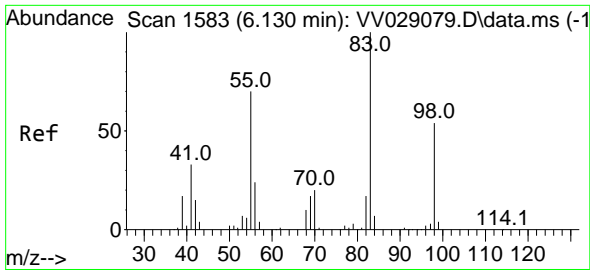
Tgt Ion: 62 Resp: 1317
 Ion Ratio Lower Upper
 62 100
 98 0.0 9.0 13.6#



#34
 Trichloroethene
 Concen: 0.540 ug/L
 RT: 5.918 min Scan# 1517
 Delta R.T. 0.003 min
 Lab File: VV029086.D
 Acq: 18 Nov 2022 00:34

Tgt Ion: 95 Resp: 8987
 Ion Ratio Lower Upper
 95 100
 97 60.0 45.6 84.8
 132 106.3 69.1 128.3
 130 100.5 74.9 139.1

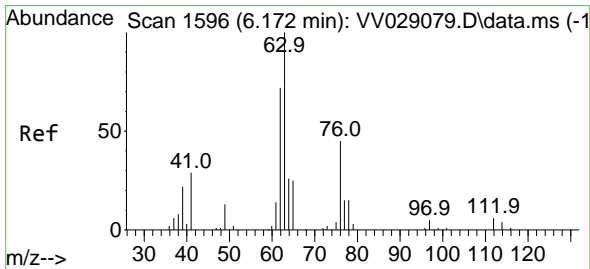
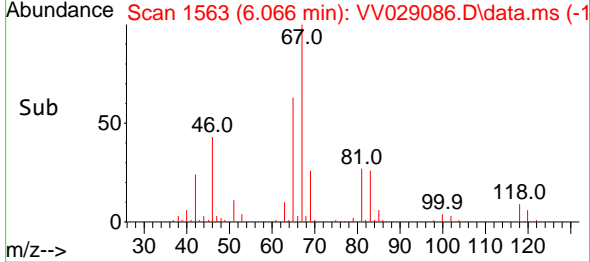
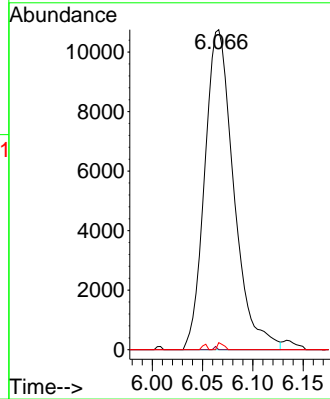
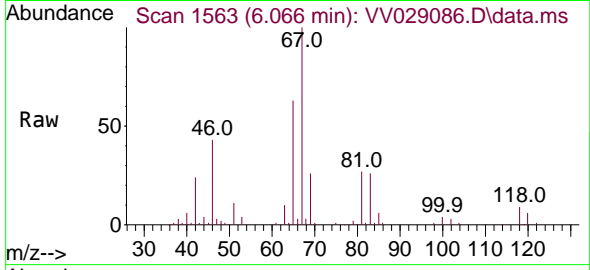




#35
 Methylcyclohexane
 Concen: 0.740 ug/L
 RT: 6.066 min Scan# 1563
 Delta R.T. -0.064 min
 Lab File: VV029086.D
 Acq: 18 Nov 2022 00:34

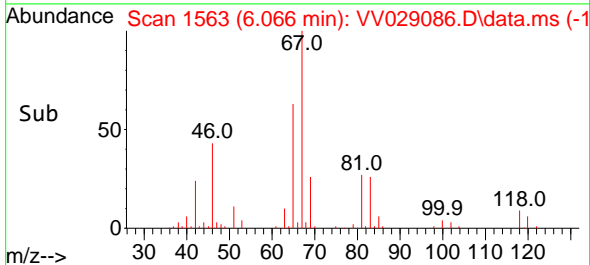
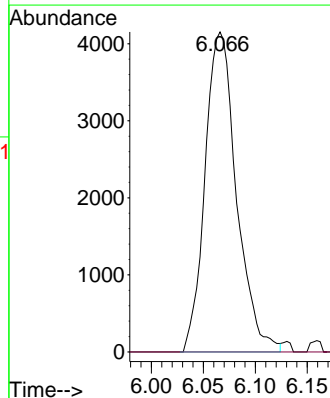
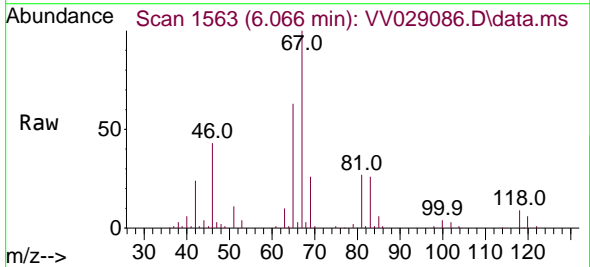
Instrument : MSVOA_V
 ClientSampleId : BGCD1

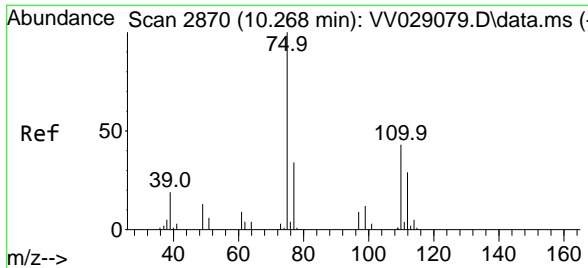
Tgt Ion: 83 Resp: 21630
 Ion Ratio Lower Upper
 83 100
 55 0.1 55.8 83.6#
 98 0.5 38.2 57.2#



#37
 1,2-Dichloropropane
 Concen: 0.584 ug/L
 RT: 6.066 min Scan# 1563
 Delta R.T. -0.106 min
 Lab File: VV029086.D
 Acq: 18 Nov 2022 00:34

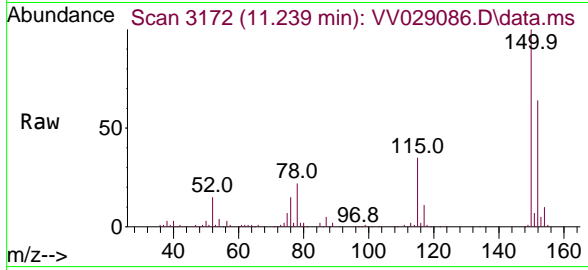
Tgt Ion: 63 Resp: 8752
 Ion Ratio Lower Upper
 63 100
 112 0.0 4.0 6.0#





#61
 1,2,3-Trichloropropane
 Concen: 1.499 ug/L
 RT: 11.239 min Scan# 31
 Delta R.T. 0.971 min
 Lab File: VV029086.D
 Acq: 18 Nov 2022 00:34

Instrument :
 MSVOA_V
 ClientSampleId :
 BGCD1



Tgt Ion: 75 Resp: 10094

Ion	Ratio	Lower	Upper
75	100		
77	32.5	26.2	39.2
110	0.4	32.6	48.8#

