

Data Path : Z:\voasrv\HPCHEM1\MSVOA_V\Data\VV111722\
 Data File : VV029057.D
 Acq On : 17 Nov 2022 12:35
 Operator : SY/MD
 Sample : VV1117WBL01
 Misc : 25.0mL/MSVOA_V/WATER
 ALS Vial : 4 Sample Multiplier: 1

Instrument :
 MSVOA_V
 ClientSampleId :
 VBLK266

Quant Time: Nov 18 01:41:16 2022
 Quant Method : Z:\voasrv\HPCHEM1\MSVOA_V\Method\SFAMVTR111122WMA.M
 Quant Title : TRACE VOA SFAM1.0
 QLast Update : Fri Nov 18 01:37:41 2022
 Response via : Initial Calibration

Compound	R.T.	QIon	Response	Conc	Units	Dev(Min)

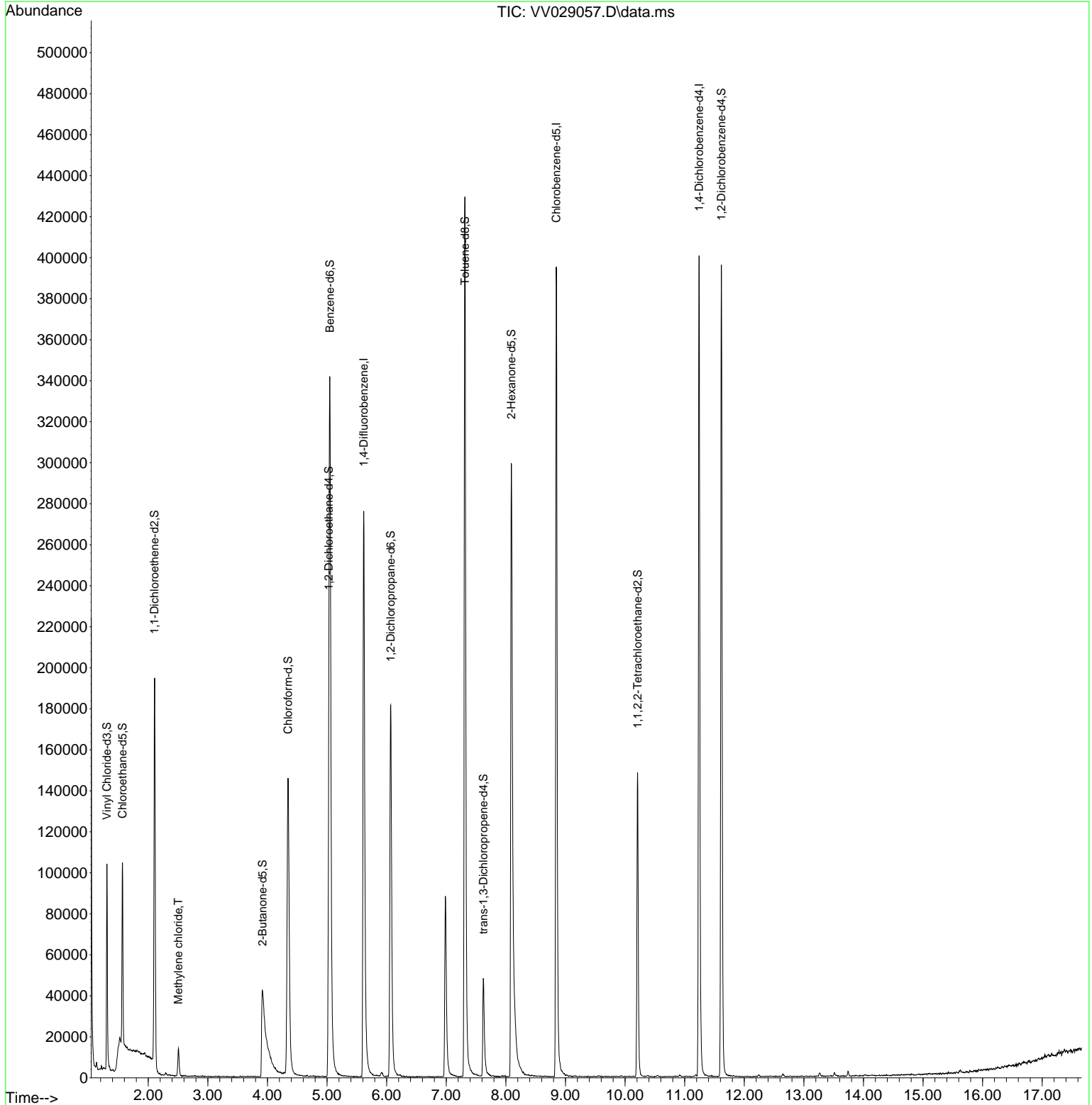
Internal Standards						
1) 1,4-Difluorobenzene	5.616	114	270626	5.000	ug/L	0.00
28) Chlorobenzene-d5	8.847	117	249735	5.000	ug/L	0.00
58) 1,4-Dichlorobenzene-d4	11.242	152	117253	5.000	ug/L	0.00
System Monitoring Compounds						
4) Vinyl Chloride-d3	1.307	65	69025	4.184	ug/L	0.00
Spiked Amount	5.000	Range 40 - 130	Recovery	=	83.600%	
7) Chloroethane-d5	1.568	69	58418	4.028	ug/L	0.00
Spiked Amount	5.000	Range 65 - 130	Recovery	=	80.600%	
11) 1,1-Dichloroethene-d2	2.104	63	94373	3.139	ug/L	0.00
Spiked Amount	5.000	Range 60 - 125	Recovery	=	62.800%	
20) 2-Butanone-d5	3.915	46	132250	47.885	ug/L	0.02
Spiked Amount	50.000	Range 40 - 130	Recovery	=	95.780%	
24) Chloroform-d	4.346	84	163092	4.815	ug/L	0.00
Spiked Amount	5.000	Range 70 - 125	Recovery	=	96.200%	
26) 1,2-Dichloroethane-d4	5.030	65	75971	4.985	ug/L	0.00
Spiked Amount	5.000	Range 70 - 130	Recovery	=	99.600%	
32) Benzene-d6	5.046	84	340123	4.563	ug/L	0.00
Spiked Amount	5.000	Range 70 - 125	Recovery	=	91.200%	
36) 1,2-Dichloropropane-d6	6.066	67	97236	4.671	ug/L	0.00
Spiked Amount	5.000	Range 60 - 140	Recovery	=	93.400%	
41) Toluene-d8	7.313	98	311026	4.635	ug/L	0.00
Spiked Amount	5.000	Range 70 - 130	Recovery	=	92.800%	
43) trans-1,3-Dichloroprop...	7.622	79	33043	4.867	ug/L	0.00
Spiked Amount	5.000	Range 55 - 130	Recovery	=	97.400%	
46) 2-Hexanone-d5	8.091	63	136237	47.014	ug/L	0.00
Spiked Amount	50.000	Range 45 - 130	Recovery	=	94.020%	
56) 1,1,2,2-Tetrachloroeth...	10.210	84	72527	5.026	ug/L	0.00
Spiked Amount	5.000	Range 65 - 120	Recovery	=	100.600%	
66) 1,2-Dichlorobenzene-d4	11.615	152	116698	5.563	ug/L	0.00
Spiked Amount	5.000	Range 80 - 120	Recovery	=	111.200%	
Target Compounds						
16) Methylene chloride	2.506	84	5858	0.277	ug/L	91

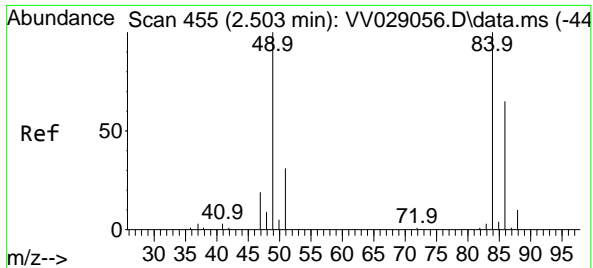
(#) = qualifier out of range (m) = manual integration (+) = signals summed

Data Path : Z:\voasrv\HPCHEM1\MSVOA_V\Data\VV111722\
 Data File : VV029057.D
 Acq On : 17 Nov 2022 12:35
 Operator : SY/MD
 Sample : VV1117WBL01
 Misc : 25.0mL/MSVOA_V/WATER
 ALS Vial : 4 Sample Multiplier: 1

Instrument :
 MSVOA_V
 ClientSampleId :
 VBLK266

Quant Time: Nov 18 01:41:16 2022
 Quant Method : Z:\voasrv\HPCHEM1\MSVOA_V\Method\SFAMVTR111122WMA.M
 Quant Title : TRACE VOA SFAM1.0
 QLast Update : Fri Nov 18 01:37:41 2022
 Response via : Initial Calibration





#16
 Methylene chloride
 Concen: 0.277 ug/L
 RT: 2.506 min Scan# 4
 Delta R.T. 0.003 min
 Lab File: VV029057.D
 Acq: 17 Nov 2022 12:35

Instrument : MSVOA_V
 ClientSampleId : VBLK266

Tgt Ion: 84 Resp: 5858

Ion	Ratio	Lower	Upper
84	100		
86	66.1	45.8	85.0
49	121.6	75.5	140.1

