

Data Path : Z:\VOASRV\HPCHEM1\MSVOA V\DATA\VV111820\
 Data File : VV019395.D
 Acq On : 18 Nov 2020 13:21
 Operator : SY/MD
 Sample : VV1118WBL02
 Misc : 25.0mL/MSVOA V/WATER
 ALS Vial : 9 Sample Multiplier: 1

Instrument :
 MSVOA_V
 ClientSampleId :
 VBLK304

Quant Time: Nov 19 07:45:45 2020
 Quant Method : Z:\VOASRV\HPCHEM1\MSVOA_V\METHOD\SFAMV111820SIM.M
 Quant Title : TRACE VOA SOM01.0
 QLast Update : Thu Nov 19 07:44:21 2020
 Response via : Initial Calibration

Internal Standards	R.T.	QIon	Response	Conc	Units	Dev(Min)
1) 1,4-Difluorobenzene	5.64	114	5097	0.50	ug/L	0.00
5) Chlorobenzene-d5	8.88	117	4743	0.50	ug/L	0.00
11) 1,4-Dichlorobenzene-d4	11.28	152	2507	0.50	ug/L	0.00

System Monitoring Compounds

2) Vinyl Chloride-d3	1.32	65	3579	0.49	ug/L	0.00
Spiked Amount	0.500	Range	40 - 130	Recovery	=	98.00%
4) 1,2-Dichloroethane-d4	5.07	65	2170	0.51	ug/L	0.02
Spiked Amount	0.500	Range	70 - 130	Recovery	=	102.00%
7) 1,2-Dichloropropane-d6	6.09	67	2059	0.52	ug/L	0.00
Spiked Amount	0.500	Range	60 - 140	Recovery	=	104.00%
8) Toluene-d8	7.33	98	5635	0.49	ug/L	0.00
Spiked Amount	0.500	Range	70 - 130	Recovery	=	98.00%
10) 1,1,2,2-Tetrachloroethane-	10.23	84	1101	0.52	ug/L	0.00
Spiked Amount	0.500	Range	65 - 120	Recovery	=	104.00%

Target Compounds

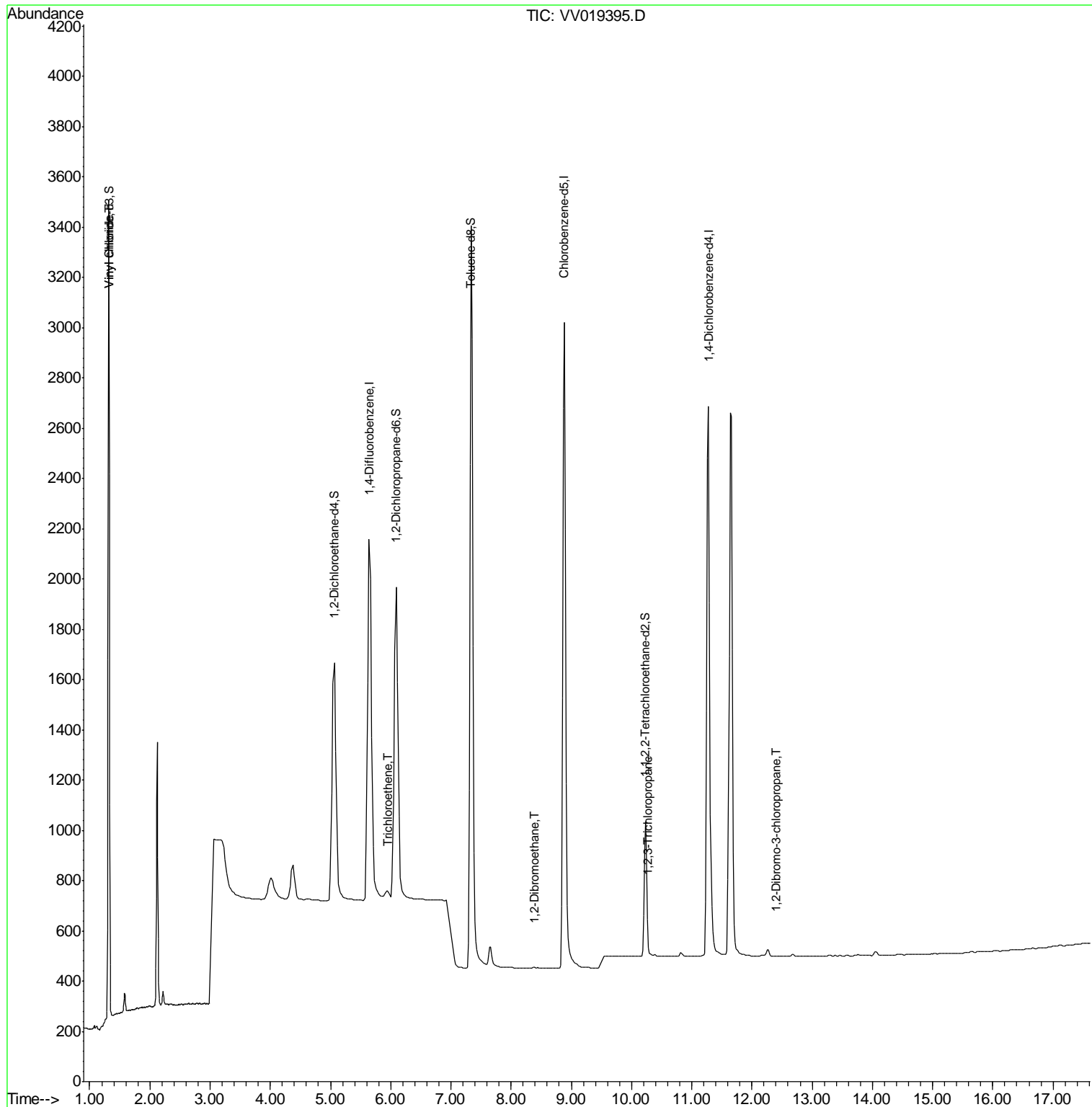
						Qvalue
3) Vinyl chloride	1.32	62	116	0.018	ug/L #	1
6) Trichloroethene	5.95	95	33	0.008	ug/L #	83
9) 1,2-Dibromoethane	8.38	107	7	0.003	ug/L #	72
12) 1,2,3-Trichloropropane	10.27	75	3	0.002	ug/L #	1
13) 1,2-Dibromo-3-chloropropan	12.41	75	4	0.013	ug/L	95

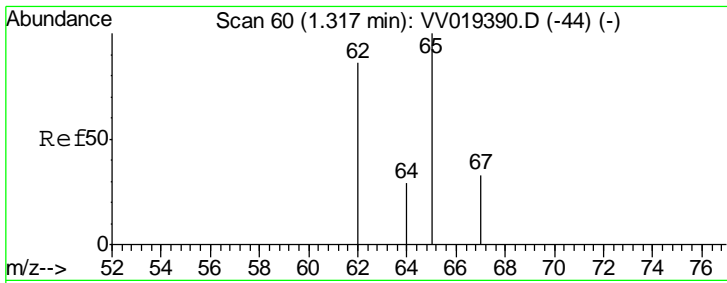
(#) = qualifier out of range (m) = manual integration (+) = signals summed

Data Path : Z:\VOASRV\HPCHEM1\MSVOA V\DATA\VV111820\
 Data File : VV019395.D
 Acq On : 18 Nov 2020 13:21
 Operator : SY/MD
 Sample : VV1118WBL02
 Misc : 25.0mL/MSVOA V/WATER
 ALS Vial : 9 Sample Multiplier: 1

Instrument :
 MSVOA_V
 ClientSampleId :
 VBLK304

Quant Time: Nov 19 07:45:45 2020
 Quant Method : Z:\VOASRV\HPCHEM1\MSVOA_V\METHOD\SFAMV111820SIM.M
 Quant Title : TRACE VOA SOM01.0
 QLast Update : Thu Nov 19 07:44:21 2020
 Response via : Initial Calibration

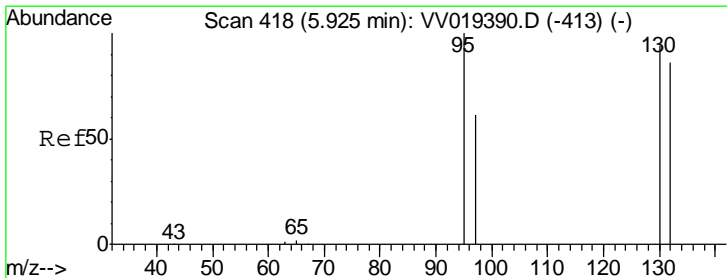
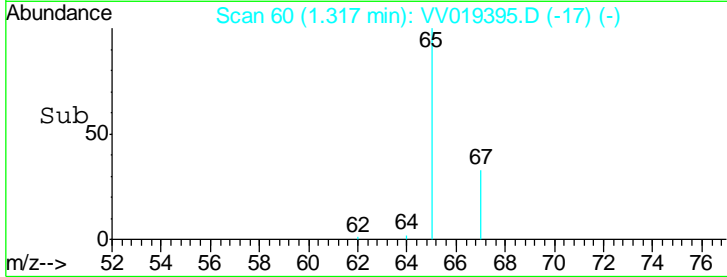
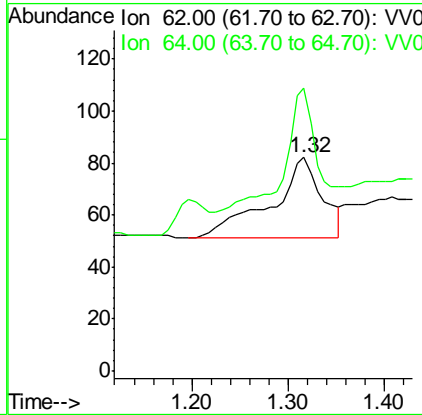
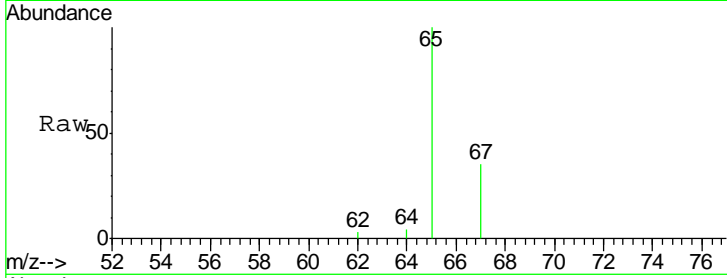




#3
 Vinyl chloride
 Concen: 0.018 ug/L
 RT: 1.32 min Scan# 60
 Delta R.T. -0.00 min
 Lab File: VV019395.D
 Acq: 18 Nov 2020 13:21

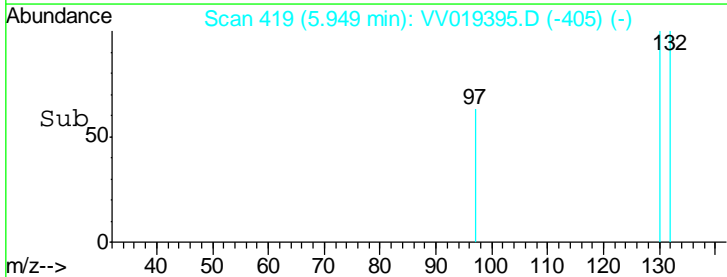
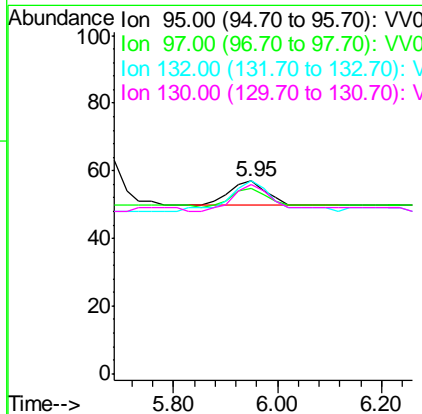
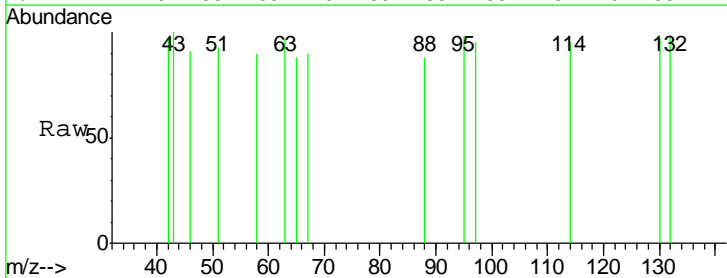
Instrument :
 MSVOA_V
ClientSampled :
 VBLK304

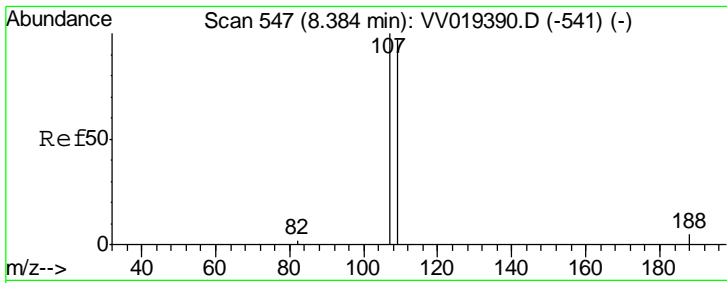
Tgt Ion	Resp	Lower	Upper
62	100		
64	132.9	25.1	46.7#



#6
 Trichloroethene
 Concen: 0.008 ug/L
 RT: 5.95 min Scan# 419
 Delta R.T. 0.02 min
 Lab File: VV019395.D
 Acq: 18 Nov 2020 13:21

Tgt Ion	Resp	Lower	Upper
95	100		
97	96.5	45.6	84.6#
132	100.0	61.0	113.2
130	98.2	65.9	122.3

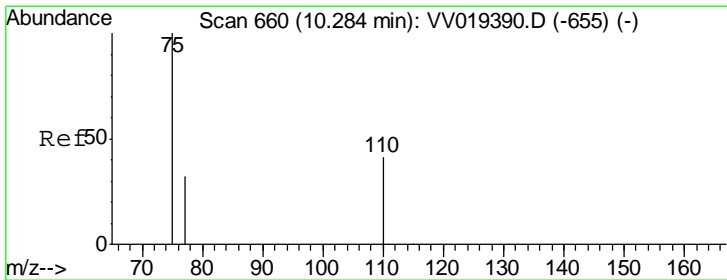
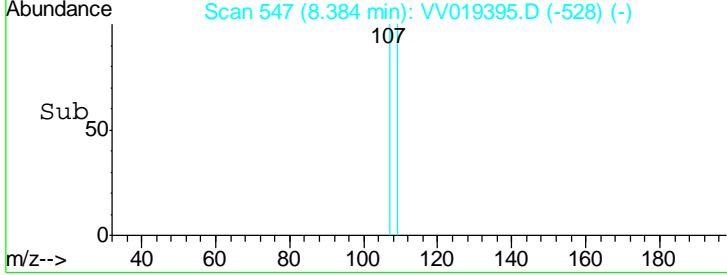
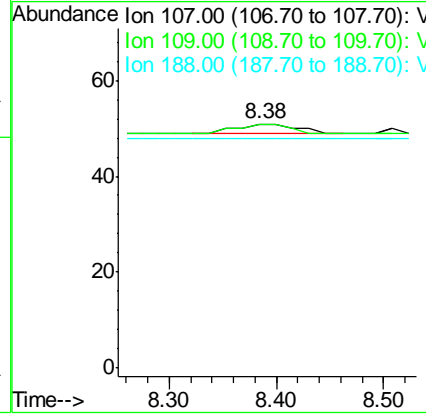
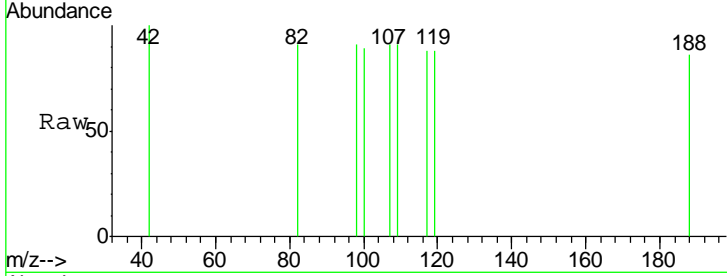




#9
 1,2-Dibromoethane
 Concen: 0.003 ug/L
 RT: 8.38 min Scan# 547
 Delta R.T. -0.00 min
 Lab File: VV019395.D
 Acq: 18 Nov 2020 13:21

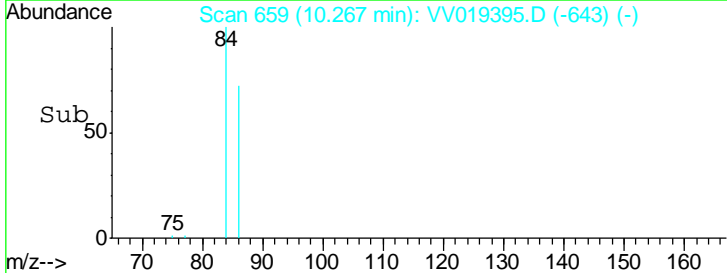
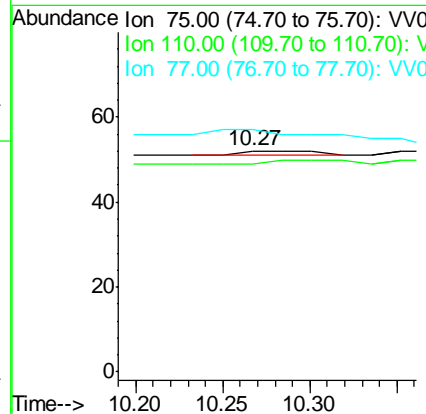
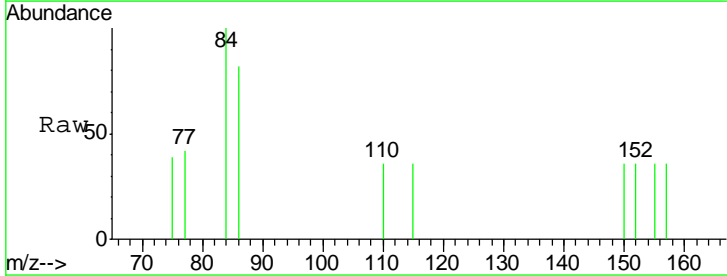
Instrument :
 MSVOA_V
ClientSampled :
 VBLK304

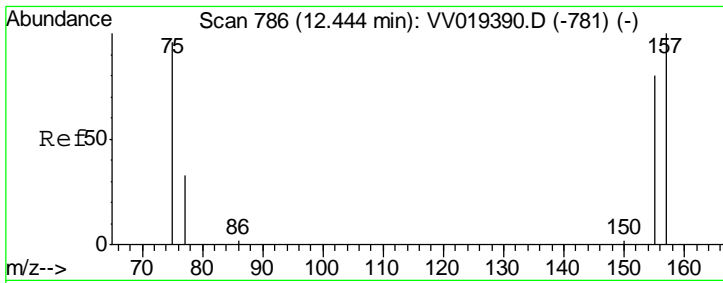
Tgt Ion	Resp	Lower	Upper
107	100		
109	100.0	68.5	127.1
188	94.1	13.9	20.9#



#12
 1,2,3-Trichloropropane
 Concen: 0.002 ug/L
 RT: 10.27 min Scan# 659
 Delta R.T. -0.02 min
 Lab File: VV019395.D
 Acq: 18 Nov 2020 13:21

Tgt Ion	Resp	Lower	Upper
75	100		
110	100.0	34.5	51.7#
77	266.7	25.7	38.5#

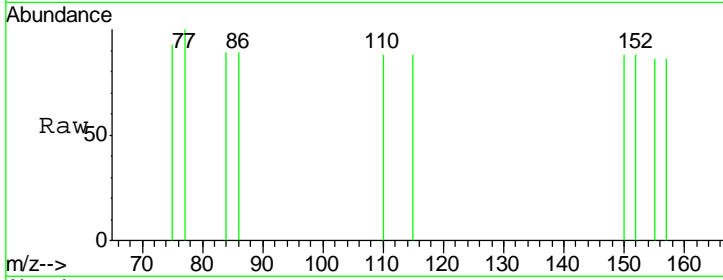




#13
 1,2-Dibromo-3-chloropropane
 Concen: 0.013 ug/L
 RT: 12.41 min Scan# 784
 Delta R.T. -0.03 min
 Lab File: VV019395.D
 Acq: 18 Nov 2020 13:21

Instrument :
 MSVOA_V
 ClientSampled :
 VBLK304

Tot Ion	Resp	Lower	Upper
75	100		
157	92.3	79.2	118.8
155	92.3	71.0	106.6



Abundance Ion 75.00 (74.70 to 75.70): VV0
 Ion 157.00 (156.70 to 157.70): V
 Ion 155.00 (154.70 to 155.70): V

