

Data Path : Z:\voasrv\HPCHEM1\MSVOA_V\Data\VW111822\
 Data File : WV029137.D
 Acq On : 18 Nov 2022 23:35
 Operator : SY/MD
 Sample : N5688-12
 Misc : 25.0mL/MSVOA_V/WATER
 ALS Vial : 34 Sample Multiplier: 1

Instrument :
 MSVOA_V
ClientSampleId :
 BGCG0

Manual Integrations
APPROVED
 Reviewed By :Krupa Patel 11/20/2022
 Supervised By :Mahesh Dadoda 11/20/2022

Quant Time: Nov 19 02:00:35 2022
 Quant Method : Z:\voasrv\HPCHEM1\MSVOA_V\Method\SFAMVTR111122WMA.M
 Quant Title : TRACE VOA SFAM1.0
 QLast Update : Fri Nov 18 04:35:43 2022
 Response via : Initial Calibration

Compound	R.T.	QIon	Response	Conc	Units	Dev(Min)
Internal Standards						
1) 1,4-Difluorobenzene	5.616	114	276548	5.000	ug/L	0.00
28) Chlorobenzene-d5	8.847	117	253616	5.000	ug/L	0.00
58) 1,4-Dichlorobenzene-d4	11.242	152	111138	5.000	ug/L	0.00
System Monitoring Compounds						
4) Vinyl Chloride-d3	1.307	65	70978	4.210	ug/L	0.00
Spiked Amount	5.000	Range 40 - 130	Recovery	=	84.200%	
7) Chloroethane-d5	1.568	69	67014	4.521	ug/L	0.00
Spiked Amount	5.000	Range 65 - 130	Recovery	=	90.400%	
11) 1,1-Dichloroethene-d2	2.108	63	101073	3.290	ug/L	0.00
Spiked Amount	5.000	Range 60 - 125	Recovery	=	65.800%	
20) 2-Butanone-d5	3.902	46	163711m	58.007	ug/L	0.00
Spiked Amount	50.000	Range 40 - 130	Recovery	=	116.020%	
24) Chloroform-d	4.342	84	171112	4.943	ug/L	0.00
Spiked Amount	5.000	Range 70 - 125	Recovery	=	98.800%	
26) 1,2-Dichloroethane-d4	5.030	65	83153	5.339	ug/L	0.00
Spiked Amount	5.000	Range 70 - 130	Recovery	=	106.800%	
32) Benzene-d6	5.047	84	345140	4.559	ug/L	0.00
Spiked Amount	5.000	Range 70 - 125	Recovery	=	91.200%	
36) 1,2-Dichloropropane-d6	6.066	67	108950	5.154	ug/L	0.00
Spiked Amount	5.000	Range 60 - 140	Recovery	=	103.000%	
41) Toluene-d8	7.310	98	299984	4.402	ug/L	0.00
Spiked Amount	5.000	Range 70 - 130	Recovery	=	88.000%	
43) trans-1,3-Dichloroprop...	7.622	79	33249	4.823	ug/L	0.00
Spiked Amount	5.000	Range 55 - 130	Recovery	=	96.400%	
46) 2-Hexanone-d5	8.088	63	145263	49.362	ug/L	0.00
Spiked Amount	50.000	Range 45 - 130	Recovery	=	98.720%	
56) 1,1,2,2-Tetrachloroeth...	10.207	84	82471	5.627	ug/L	0.00
Spiked Amount	5.000	Range 65 - 120	Recovery	=	112.600%	
66) 1,2-Dichlorobenzene-d4	11.615	152	110579	5.561	ug/L	0.00
Spiked Amount	5.000	Range 80 - 120	Recovery	=	111.200%	
Target Compounds						
3) Chloromethane	1.240	50	3102	0.162	ug/L	86
19) 1,1-Dichloroethane	3.188	63	22299	0.703	ug/L	96
22) cis-1,2-Dichloroethene	3.905	96	356078	18.039	ug/L	98
25) Chloroform	4.371	83	7141	0.215	ug/L	94
29) 1,1,1-Trichloroethane	4.606	97	43234	1.453	ug/L	96

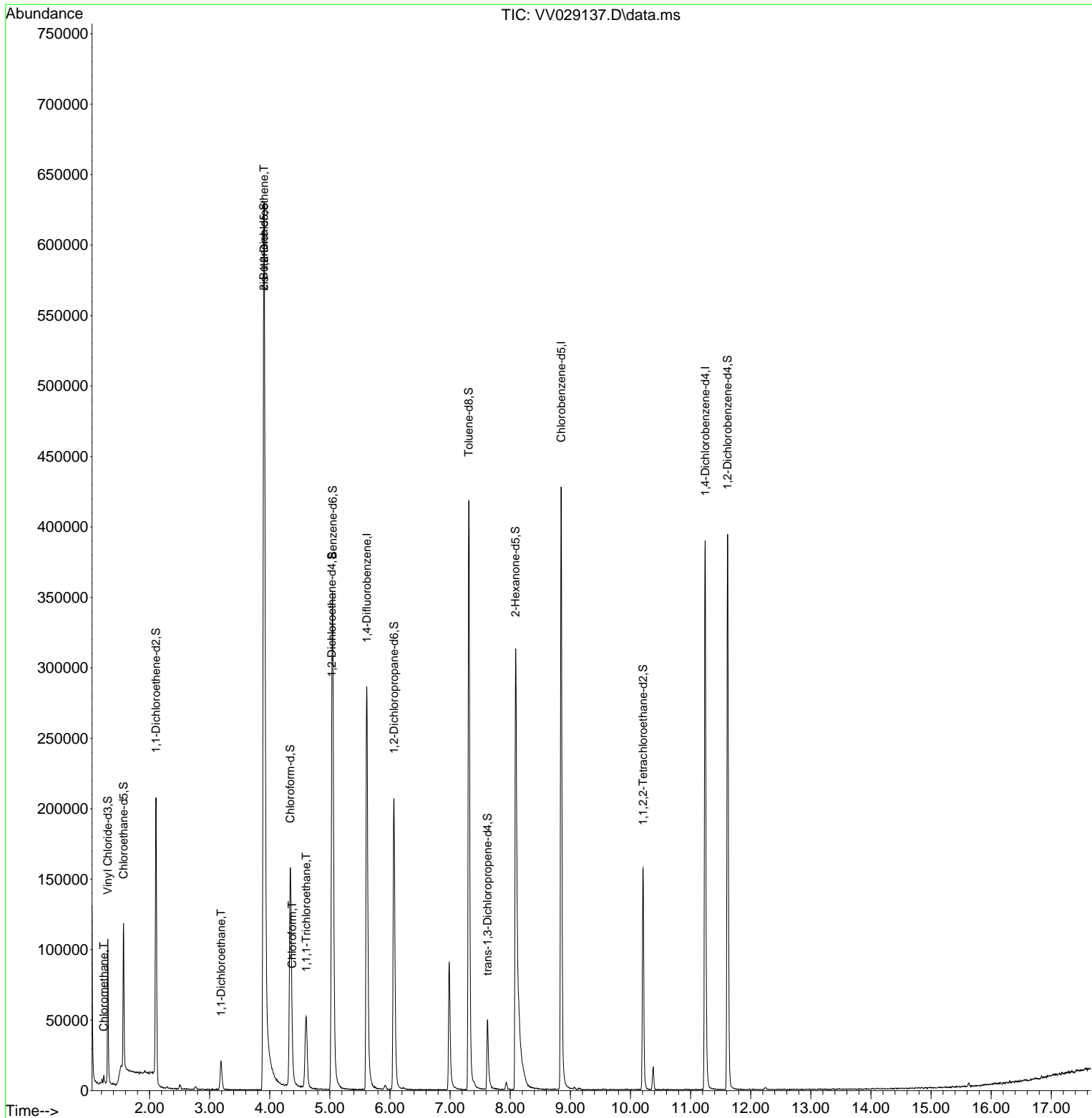
(#) = qualifier out of range (m) = manual integration (+) = signals summed

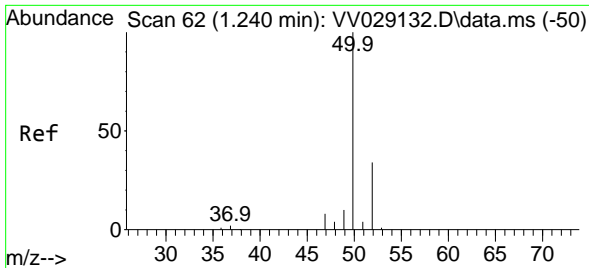
Data Path : Z:\voasrv\HPCHEM1\MSVOA_V\Data\VV111822\
 Data File : VV029137.D
 Acq On : 18 Nov 2022 23:35
 Operator : SY/MD
 Sample : N5688-12
 Misc : 25.0mL/MSVOA_V/WATER
 ALS Vial : 34 Sample Multiplier: 1

Instrument :
 MSVOA_V
ClientSampleId :
 BGCG0

Quant Time: Nov 19 02:00:35 2022
 Quant Method : Z:\voasrv\HPCHEM1\MSVOA_V\Method\SFAMVTR111122WMA.M
 Quant Title : TRACE VOA SFAM1.0
 QLast Update : Fri Nov 18 04:35:43 2022
 Response via : Initial Calibration

Manual Integrations
APPROVED
 Reviewed By :Krupa Patel 11/20/2022
 Supervised By :Mahesh Dadoda 11/20/2022





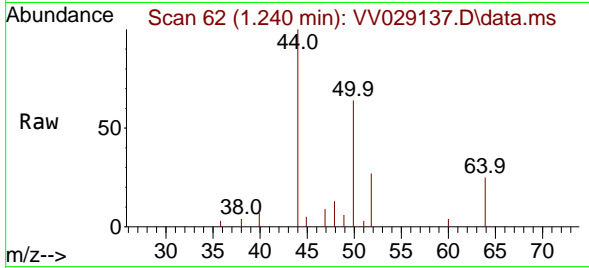
#3
 Chloromethane
 Concen: 0.162 ug/L
 RT: 1.240 min Scan# 61
 Delta R.T. -0.000 min
 Lab File: VV029137.D
 Acq: 18 Nov 2022 23:35

Instrument :

MSVOA_V

ClientSampleId :

BGCG0



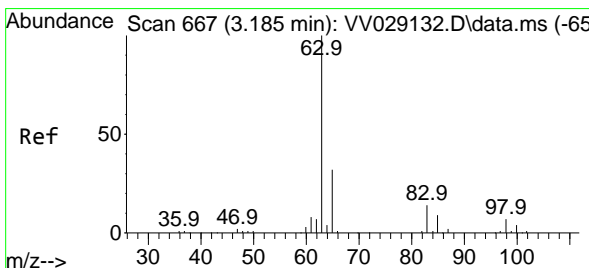
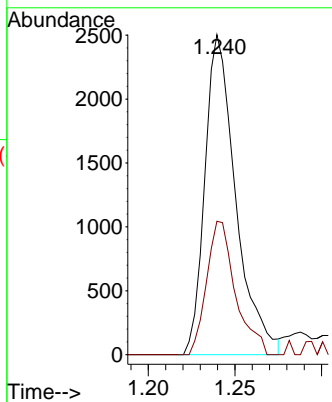
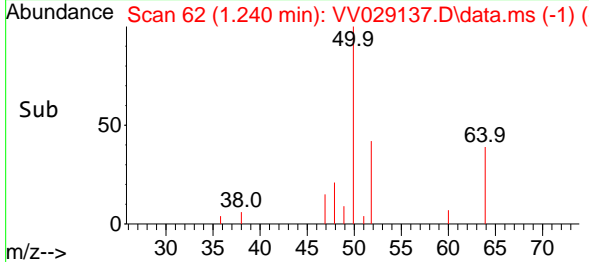
Tgt Ion: 50 Resp: 310
 Ion Ratio Lower Upper
 50 100
 52 41.7 23.7 43.9

Manual Integrations

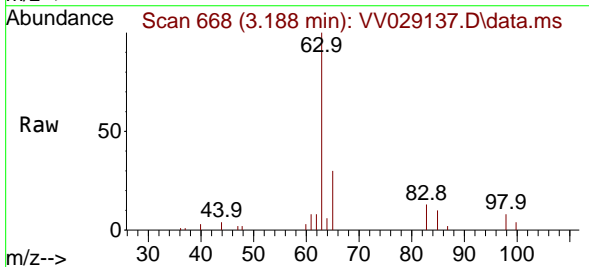
APPROVED

Reviewed By :Krupa Patel 11/20/2022

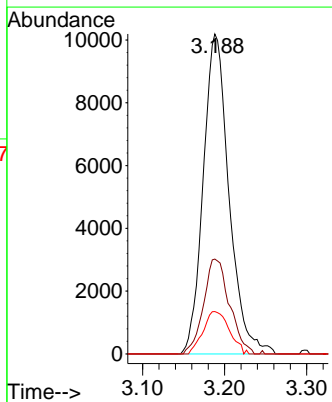
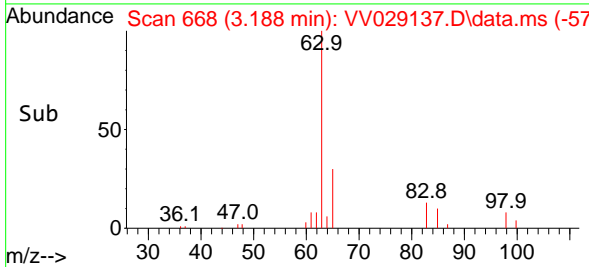
Supervised By :Mahesh Dadoda 11/20/2022

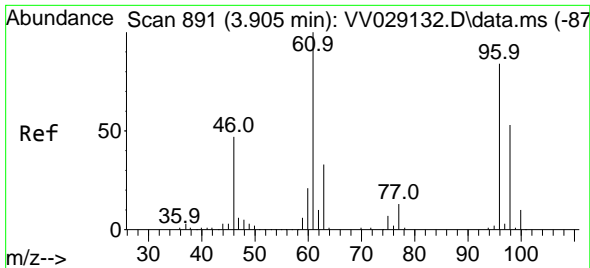


#19
 1,1-Dichloroethane
 Concen: 0.703 ug/L
 RT: 3.188 min Scan# 668
 Delta R.T. -0.000 min
 Lab File: VV029137.D
 Acq: 18 Nov 2022 23:35



Tgt Ion: 63 Resp: 22299
 Ion Ratio Lower Upper
 63 100
 65 29.6 23.0 42.6
 83 13.3 9.4 17.6





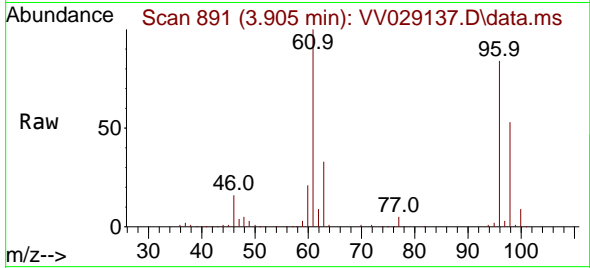
#22
 cis-1,2-Dichloroethene
 Concen: 18.039 ug/L
 RT: 3.905 min Scan# 891
 Delta R.T. -0.007 min
 Lab File: VV029137.D
 Acq: 18 Nov 2022 23:35

Instrument :

MSVOA_V

ClientSampleId :

BGCG0

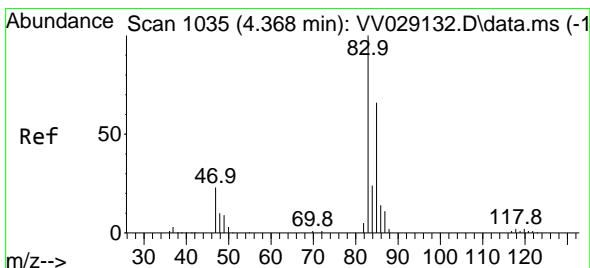
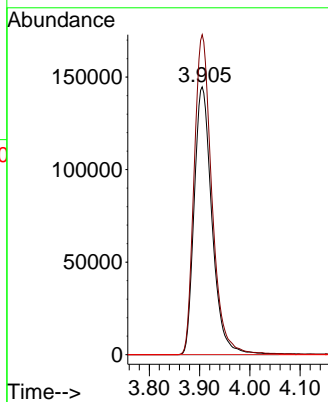
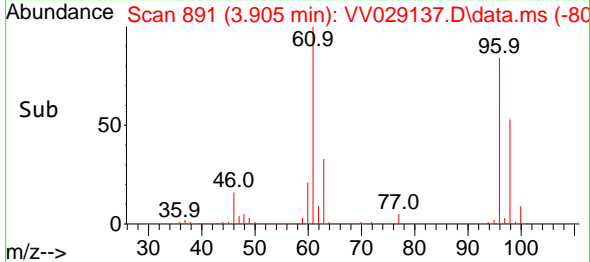


Tgt Ion: 96 Resp: 356078
 Ion Ratio Lower Upper
 96 100
 61 119.5 82.3 152.9
 68 0.0 0.0 0.0

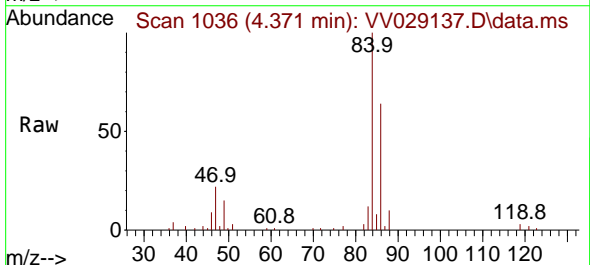
Manual Integrations

APPROVED

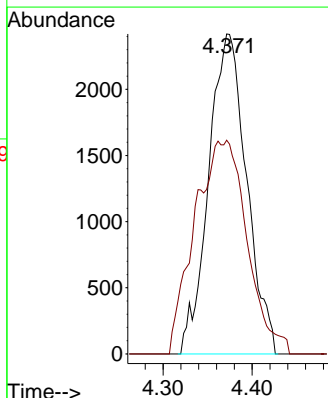
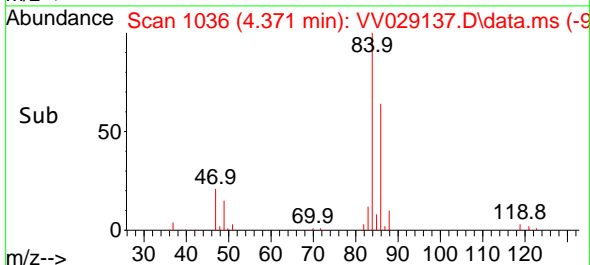
Reviewed By :Krupa Patel 11/20/2022
 Supervised By :Mahesh Dadoda 11/20/2022

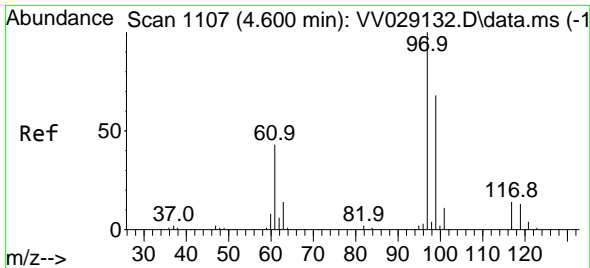


#25
 Chloroform
 Concen: 0.215 ug/L
 RT: 4.371 min Scan# 1036
 Delta R.T. -0.003 min
 Lab File: VV029137.D
 Acq: 18 Nov 2022 23:35



Tgt Ion: 83 Resp: 7141
 Ion Ratio Lower Upper
 83 100
 85 66.8 43.7 81.1





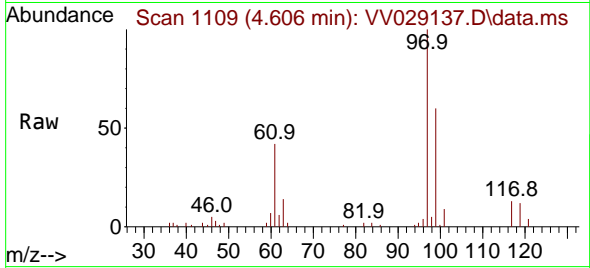
#29
 1,1,1-Trichloroethane
 Concen: 1.453 ug/L
 RT: 4.606 min Scan# 1109
 Delta R.T. -0.000 min
 Lab File: VV029137.D
 Acq: 18 Nov 2022 23:35

Instrument :

MSVOA_V

ClientSampleId :

BGCG0



Tgt Ion: 97 Resp: 43234

Ion	Ratio	Lower	Upper
97	100		
99	62.7	52.7	79.1
61	44.3	33.8	50.6

Manual Integrations

APPROVED

Reviewed By :Krupa Patel 11/20/2022

Supervised By :Mahesh Dadoda 11/20/2022

