

Data Path : Z:\voasrv\HPCHEM1\MSVOA_V\Data\VW111822\
 Data File : VW029113.D
 Acq On : 18 Nov 2022 13:11
 Operator : SY/MD
 Sample : N5687-10
 Misc : 25.0mL/MSVOA_V/WATER
 ALS Vial : 9 Sample Multiplier: 1

Instrument :
 MSVOA_V
 ClientSampleId :
 BGCD3

Integration Parameters: rteint.p
 Integrator: RTE
 Smoothing : ON
 Sampling : 1
 Start Thrs : 0.1
 Stop Thrs : 0
 Filtering: 5
 Min Area: 3 % of largest Peak
 Max Peaks: 100
 Peak Location: TOP

If leading or trailing edge < 100 prefer < Baseline drop else tangent >
 Peak separation: 5

Method : Z:\voasrv\HPCHEM1\MSVOA_V\Method\SFAMVTR111122WMA.M
 Title : TRACE VOA SFAM1.0

Signal : TIC: VW029113.D\data.ms

| peak # | R.T. min | first scan | max scan | last scan | PK TY | peak height | corr. area | corr. % max. | % of total |
|--------|----------|------------|----------|-----------|-------|-------------|------------|--------------|------------|
| 1 | 1.240 | 57 | 62 | 71 | rBV | 12748 | 16762 | 1.05% | 0.171% |
| 2 | 1.307 | 76 | 83 | 95 | rVB | 112904 | 121922 | 7.67% | 1.242% |
| 3 | 1.433 | 110 | 122 | 134 | rBV2 | 26693 | 91773 | 5.77% | 0.935% |
| 4 | 1.568 | 157 | 164 | 175 | rVB | 107013 | 124679 | 7.84% | 1.270% |
| 5 | 2.108 | 323 | 332 | 347 | rVB | 218645 | 331895 | 20.88% | 3.380% |
| 6 | 2.760 | 522 | 535 | 548 | rBV2 | 17517 | 31872 | 2.01% | 0.325% |
| 7 | 3.191 | 655 | 669 | 683 | rBV2 | 10885 | 23446 | 1.48% | 0.239% |
| 8 | 3.905 | 878 | 891 | 936 | rBV2 | 253484 | 742122 | 46.69% | 7.558% |
| 9 | 4.342 | 1012 | 1027 | 1059 | rVB | 153828 | 399746 | 25.15% | 4.071% |
| 10 | 4.603 | 1091 | 1108 | 1132 | rVB2 | 50360 | 134996 | 8.49% | 1.375% |
| 11 | 5.043 | 1228 | 1245 | 1276 | rBV2 | 357887 | 914396 | 57.53% | 9.313% |
| 12 | 5.612 | 1407 | 1422 | 1454 | rBV | 293891 | 621764 | 39.12% | 6.332% |
| 13 | 5.908 | 1501 | 1514 | 1548 | rBV | 796590 | 1589450 | 100.00% | 16.187% |
| 14 | 6.066 | 1551 | 1563 | 1595 | rVB2 | 202580 | 436438 | 27.46% | 4.445% |
| 15 | 6.985 | 1836 | 1849 | 1879 | rBV | 89107 | 181789 | 11.44% | 1.851% |
| 16 | 7.310 | 1937 | 1950 | 1971 | rBV | 427559 | 779844 | 49.06% | 7.942% |
| 17 | 7.622 | 2037 | 2047 | 2069 | rBV2 | 47385 | 92792 | 5.84% | 0.945% |
| 18 | 8.091 | 2180 | 2193 | 2237 | rBV2 | 246990 | 842025 | 52.98% | 8.575% |
| 19 | 8.847 | 2416 | 2428 | 2464 | rBV | 422610 | 733009 | 46.12% | 7.465% |
| 20 | 10.210 | 2840 | 2852 | 2872 | rBV | 149627 | 255512 | 16.08% | 2.602% |
| 21 | 11.242 | 3159 | 3173 | 3203 | rBV | 405115 | 675662 | 42.51% | 6.881% |
| 22 | 11.615 | 3277 | 3289 | 3319 | rBV | 410540 | 677111 | 42.60% | 6.896% |

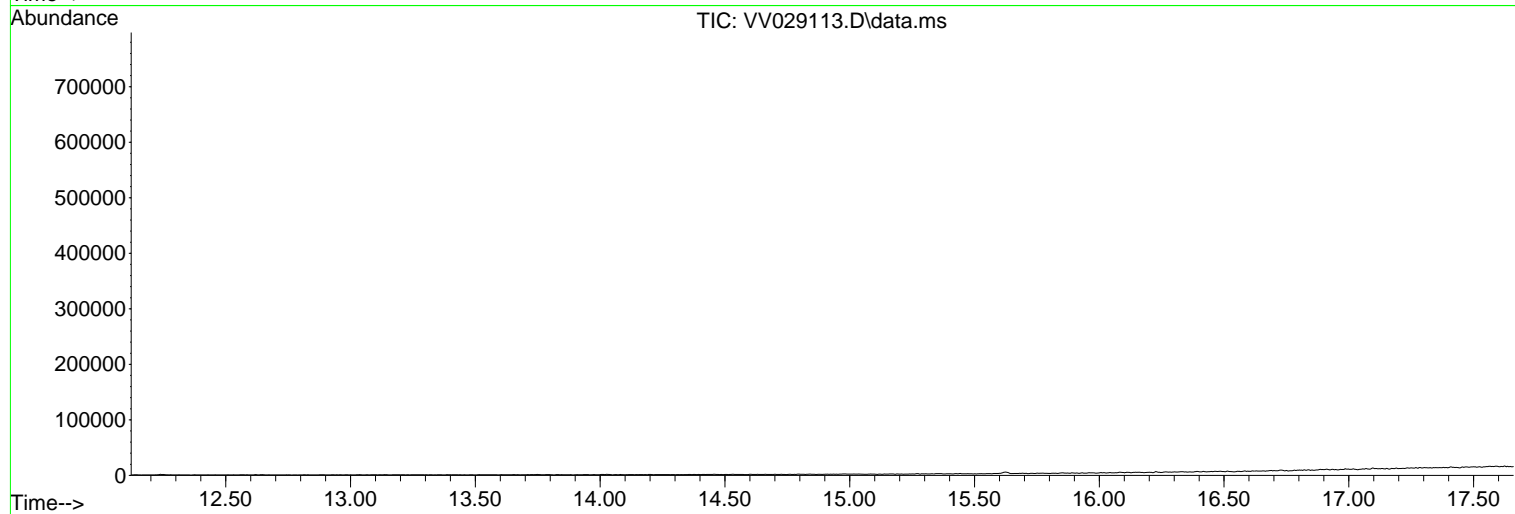
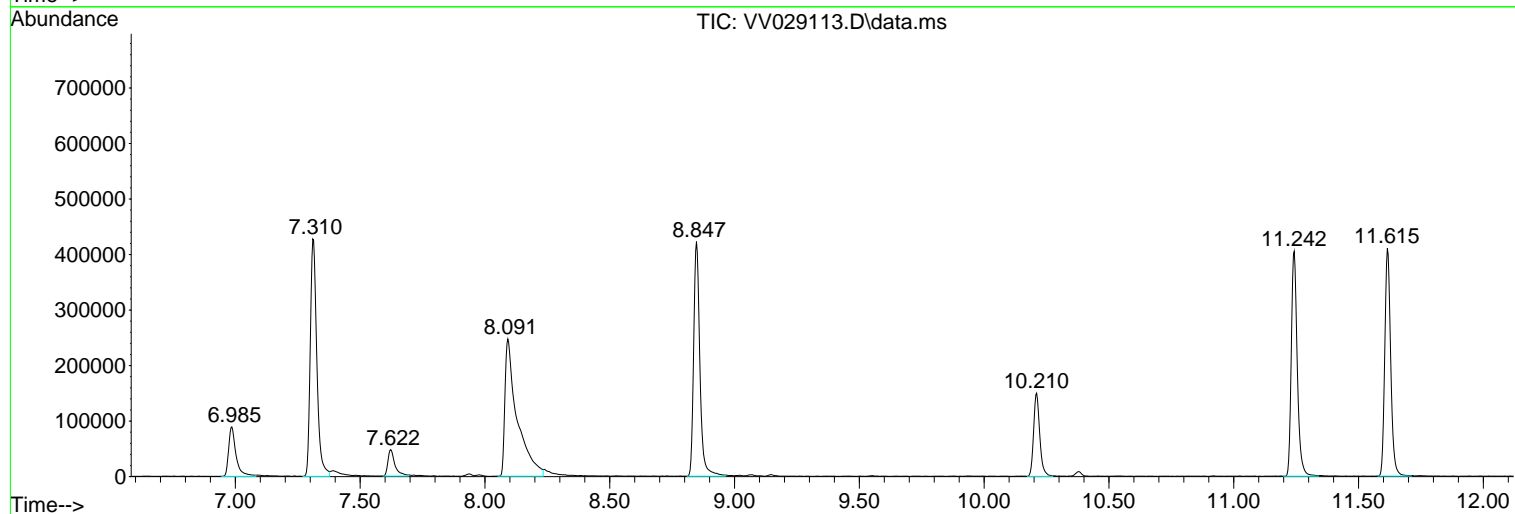
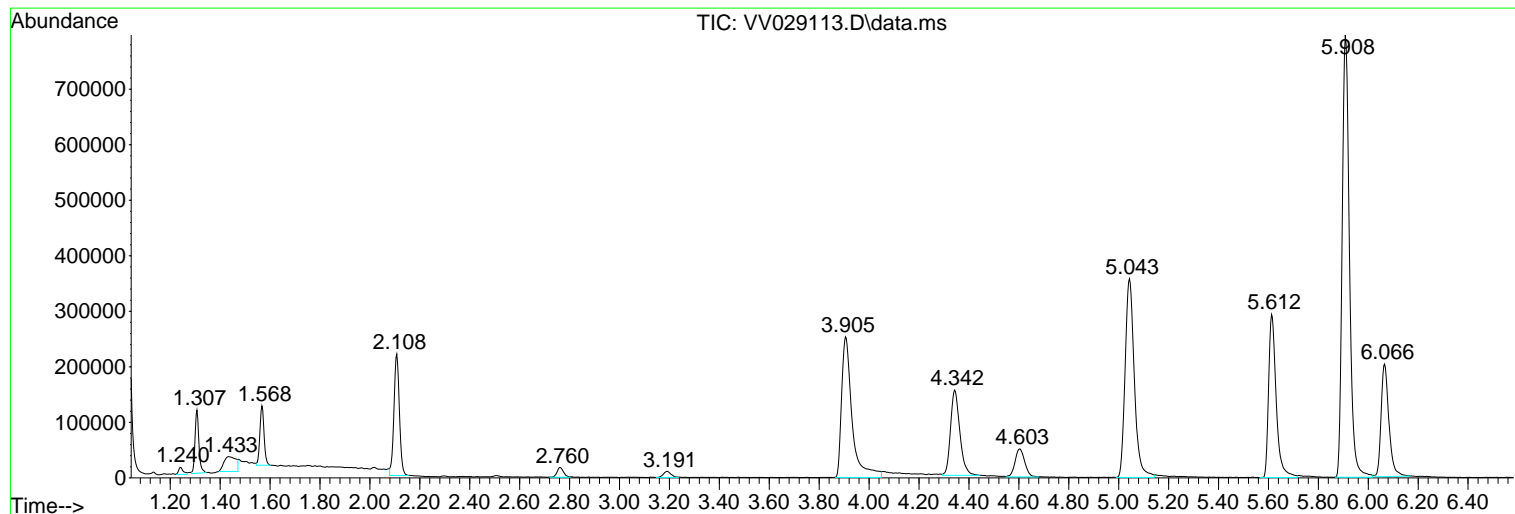
Sum of corrected areas: 9819005

Data Path : Z:\voasrv\HPCHEM1\MSVOA_V\Data\VV111822\
 Data File : VV029113.D
 Acq On : 18 Nov 2022 13:11
 Operator : SY/MD
 Sample : N5687-10
 Misc : 25.0mL/MSVOA_V/WATER
 ALS Vial : 9 Sample Multiplier: 1

Instrument :
 MSVOA_V
 ClientSampleId :
 BGCD3

Quant Method : Z:\voasrv\HPCHEM1\MSVOA_V\Method\SFAMVTR111122WMA.M
 Quant Title : TRACE VOA SFAM1.0

TIC Library : C:\Database\NIST20.L
 TIC Integration Parameters: LSCINT.P



Data Path : Z:\voasrv\HPCHEM1\MSVOA_V\Data\VV111822\
 Data File : VV029113.D
 Acq On : 18 Nov 2022 13:11
 Operator : SY/MD
 Sample : N5687-10
 Misc : 25.0mL/MSVOA_V/WATER
 ALS Vial : 9 Sample Multiplier: 1

Instrument :
 MSVOA_V
 ClientSampleId :
 BGCD3

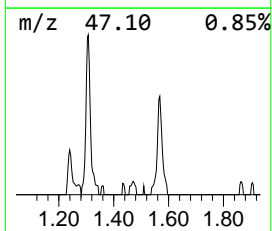
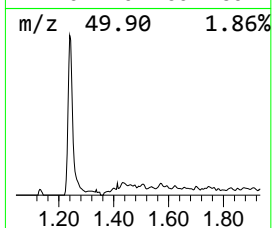
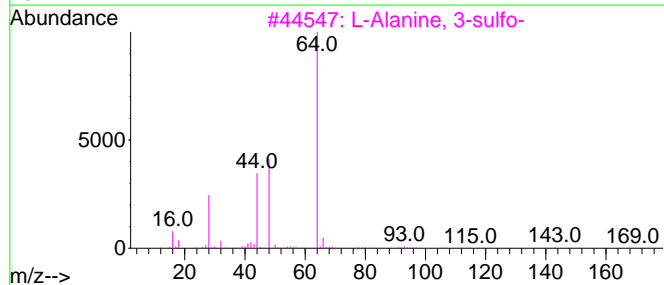
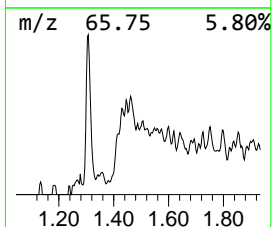
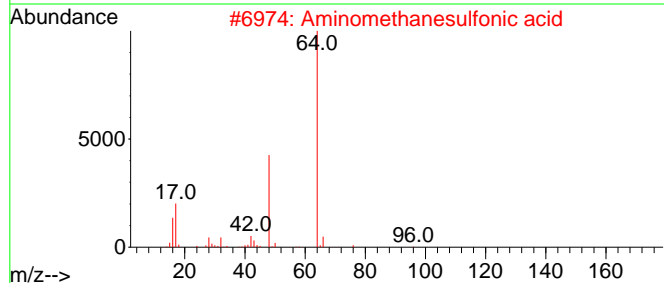
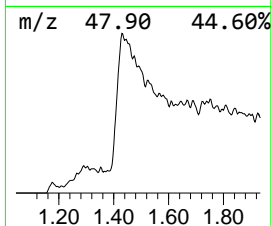
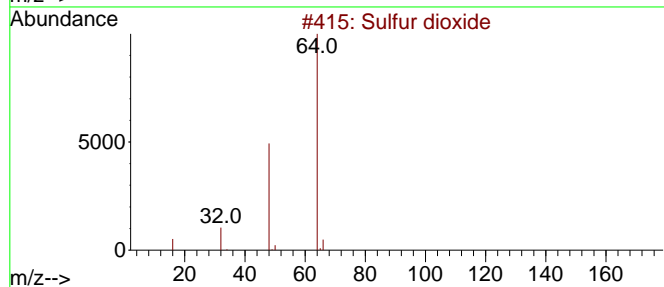
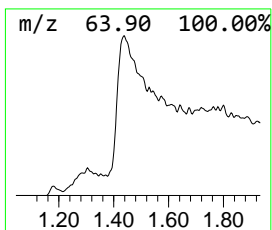
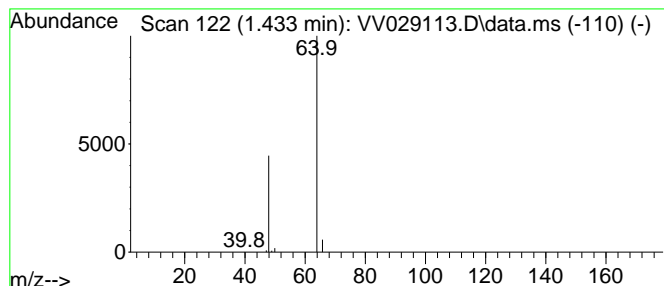
Quant Method : Z:\voasrv\HPCHEM1\MSVOA_V\Method\SFAMVTR111122WMA.M
 Quant Title : TRACE VOA SFAM1.0

TIC Library : C:\Database\NIST20.L
 TIC Integration Parameters: LSCINT.P

 Peak Number 1 Sulfur dioxide Concentration Rank 2

| R.T. | EstConc | Area | Relative to ISTD | R.T. |
|-------|-----------|-------|---------------------|-------|
| 1.433 | 0.74 ug/L | 91773 | 1,4-Difluorobenzene | 5.612 |

| Hit# | of 5 | Tentative ID | MW | MolForm | CAS# | Qual |
|------|------|---------------------------|-----|----------|-------------|------|
| 1 | | Sulfur dioxide | 64 | O2S | 007446-09-5 | 90 |
| 2 | | Aminomethanesulfonic acid | 111 | CH5NO3S | 013881-91-9 | 64 |
| 3 | | L-Alanine, 3-sulfo- | 169 | C3H7NO5S | 000498-40-8 | 9 |
| 4 | | Sulfur dioxide | 64 | O2S | 007446-09-5 | 7 |
| 5 | | Ethene, 1,2-difluoro- | 64 | C2H2F2 | 001691-13-0 | 4 |



Data Path : Z:\voasrv\HPCHEM1\MSVOA_V\Data\VW111822\
Data File : VW029113.D
Acq On : 18 Nov 2022 13:11
Operator : SY/MD
Sample : N5687-10
Misc : 25.0mL/MSVOA_V/WATER
ALS Vial : 9 Sample Multiplier: 1

Instrument :
MSVOA_V
ClientSampleId :
BGCD3

Quant Method : Z:\voasrv\HPCHEM1\MSVOA_V\Method\SFAMVTR111122WMA.M
Quant Title : TRACE VOA SFAM1.0

TIC Library : C:\Database\NIST0.L
TIC Integration Parameters: LSCINT.P

| TIC Top Hit name | RT | EstConc | Units | Response | --Internal Standard-- | | | |
|------------------|-------|---------|-------|----------|-----------------------|-------|--------|------|
| | | | | | # | RT | Resp | Conc |
| Sulfur dioxide | 1.433 | 0.7 | ug/L | 91773 | 1 | 5.612 | 621764 | 5.0 |