

Data Path : Z:\voasrv\HPCHEM1\MSVOA_V\Data\VW111822\
 Data File : VW029120.D
 Acq On : 18 Nov 2022 15:59
 Operator : SY/MD
 Sample : N5687-17
 Misc : 25.0mL/MSVOA_V/WATER
 ALS Vial : 16 Sample Multiplier: 1

Instrument :
 MSVOA_V
 ClientSampleId :
 BGCE2

Integration Parameters: rteint.p
 Integrator: RTE
 Smoothing : ON Filtering: 5
 Sampling : 1 Min Area: 3 % of largest Peak
 Start Thrs: 0.1 Max Peaks: 100
 Stop Thrs : 0 Peak Location: TOP

If leading or trailing edge < 100 prefer < Baseline drop else tangent >
 Peak separation: 5

Method : Z:\voasrv\HPCHEM1\MSVOA_V\Method\SFAMVTR111122WMA.M
 Title : TRACE VOA SFAM1.0

Signal : TIC: VW029120.D\data.ms

peak #	R.T. min	first scan	max scan	last scan	PK TY	peak height	corr. area	corr. % max.	% of total
1	1.121	18	25	48	rBV	231232	245952	28.25%	3.333%
2	1.304	76	82	102	rVB	101486	119831	13.76%	1.624%
3	1.429	107	121	123	rBV	38829	76823	8.82%	1.041%
4	1.568	157	164	177	rVB	98739	115567	13.27%	1.566%
5	2.105	322	331	347	rVB	188234	278773	32.02%	3.778%
6	3.908	877	892	917	rBV	48916	193264	22.20%	2.619%
7	4.342	1010	1027	1056	rVB	144315	374579	43.02%	5.076%
8	5.043	1226	1245	1276	rBV2	340919	870730	100.00%	11.799%
9	5.613	1411	1422	1457	rBV	282833	599042	68.80%	8.117%
10	6.066	1548	1563	1594	rBV2	194120	417260	47.92%	5.654%
11	6.985	1837	1849	1868	rBV	84197	165088	18.96%	2.237%
12	7.310	1938	1950	1977	rBV	408263	745479	85.62%	10.102%
13	7.622	2037	2047	2068	rBV	45161	88681	10.18%	1.202%
14	7.934	2135	2144	2156	rBV2	5952	10049	1.15%	0.136%
15	8.091	2181	2193	2245	rBV2	290828	848297	97.42%	11.495%
16	8.847	2414	2428	2456	rBV	412403	698662	80.24%	9.467%
17	10.210	2838	2852	2869	rBV	145520	245143	28.15%	3.322%
18	10.378	2892	2904	2916	rBV2	17562	29438	3.38%	0.399%
19	11.243	3159	3173	3200	rBV	388654	634357	72.85%	8.596%
20	11.615	3277	3289	3308	rBV	377082	622712	71.52%	8.438%

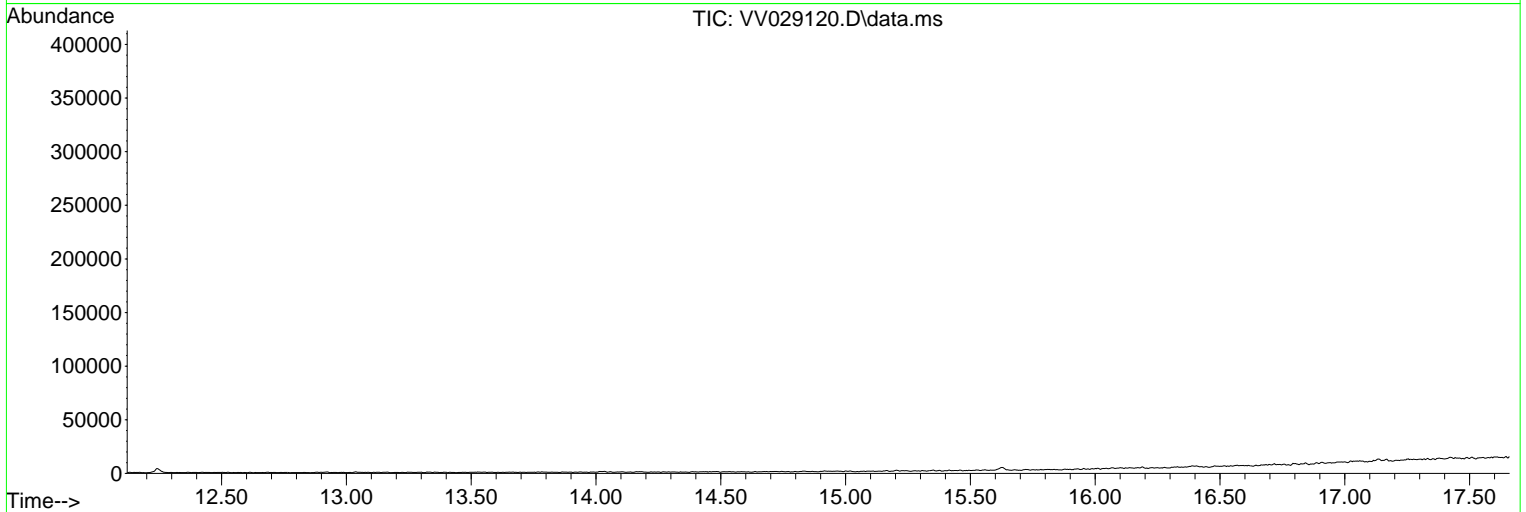
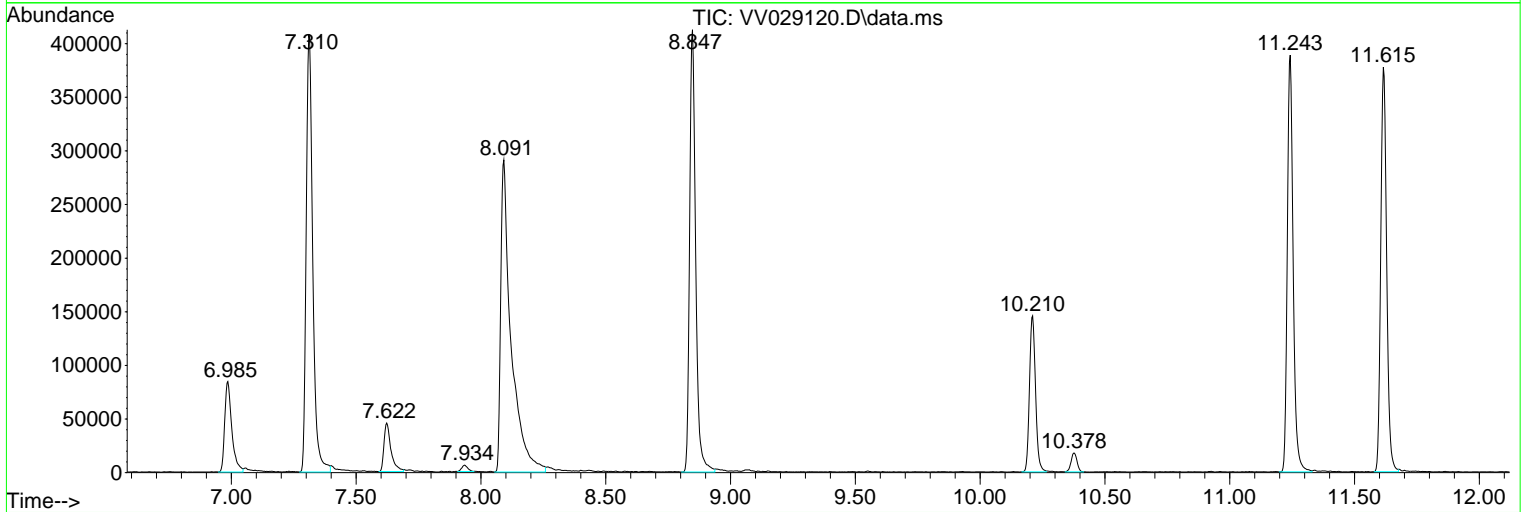
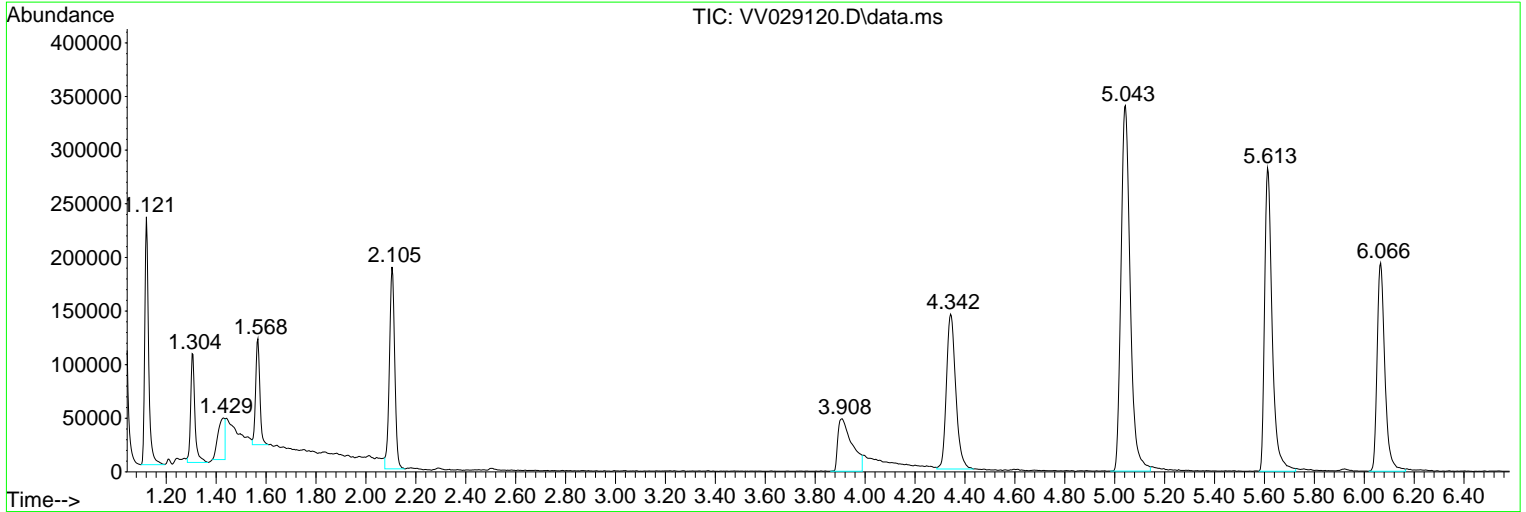
Sum of corrected areas: 7379727

Data Path : Z:\voasrv\HPCHEM1\MSVOA_V\Data\VV111822\
 Data File : VV029120.D
 Acq On : 18 Nov 2022 15:59
 Operator : SY/MD
 Sample : N5687-17
 Misc : 25.0mL/MSVOA_V/WATER
 ALS Vial : 16 Sample Multiplier: 1

Instrument :
 MSVOA_V
 ClientSampleId :
 BGCE2

Quant Method : Z:\voasrv\HPCHEM1\MSVOA_V\Method\SFAMVTR111122WMA.M
 Quant Title : TRACE VOA SFAM1.0

TIC Library : C:\Database\NIST20.L
 TIC Integration Parameters: LSCINT.P



Data Path : Z:\voasrv\HPCHEM1\MSVOA_V\Data\VV111822\
 Data File : VV029120.D
 Acq On : 18 Nov 2022 15:59
 Operator : SY/MD
 Sample : N5687-17
 Misc : 25.0mL/MSVOA_V/WATER
 ALS Vial : 16 Sample Multiplier: 1

Instrument :
 MSVOA_V
 ClientSampleId :
 BGCE2

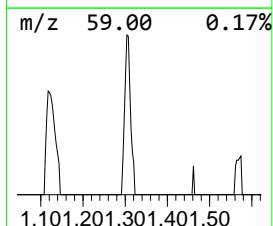
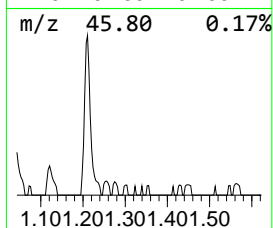
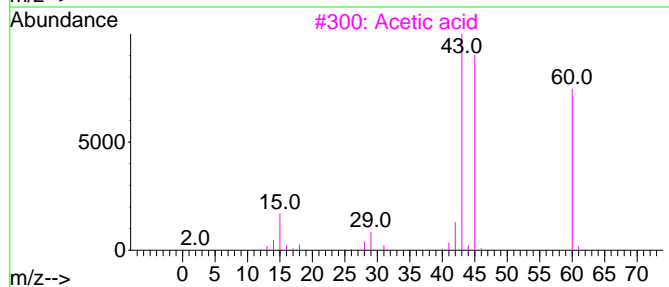
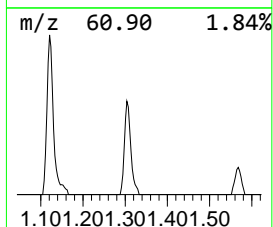
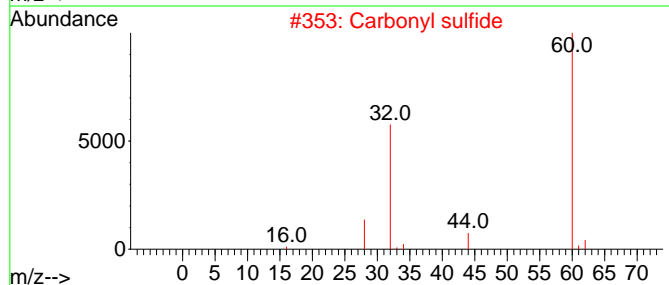
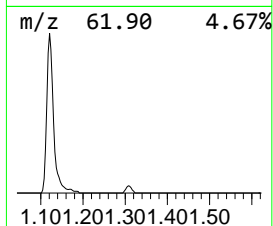
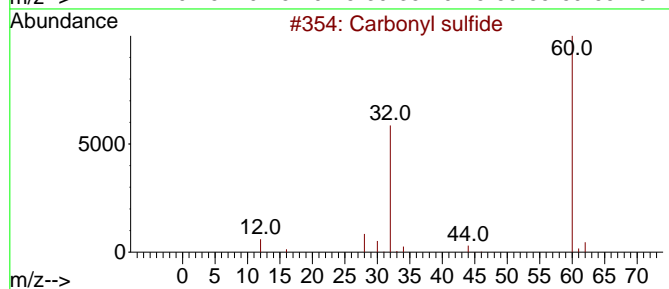
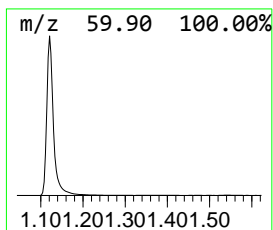
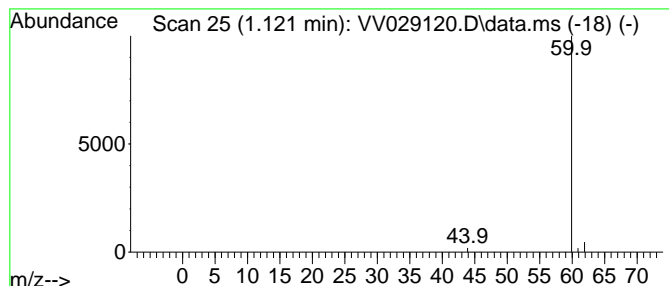
Quant Method : Z:\voasrv\HPCHEM1\MSVOA_V\Method\SFAMVTR111122WMA.M
 Quant Title : TRACE VOA SFAM1.0

TIC Library : C:\Database\NIST20.L
 TIC Integration Parameters: LSCINT.P

 Peak Number 1 unknown-01 Concentration Rank 1

R.T.	EstConc	Area	Relative to ISTD	R.T.
1.121	2.05 ug/L	245952	1,4-Difluorobenzene	5.612

Hit#	of 5	Tentative ID	MW	MolForm	CAS#	Qual
1		Carbonyl sulfide	60	COS	000463-58-1	5
2		Carbonyl sulfide	60	COS	000463-58-1	5
3		Acetic acid	60	C2H4O2	000064-19-7	4
4		Urea	60	CH4N2O	000057-13-6	4
5		Formamidoxime	60	CH4N2O	000624-82-8	4



Data Path : Z:\voasrv\HPCHEM1\MSVOA_V\Data\VV111822\
 Data File : VV029120.D
 Acq On : 18 Nov 2022 15:59
 Operator : SY/MD
 Sample : N5687-17
 Misc : 25.0mL/MSVOA_V/WATER
 ALS Vial : 16 Sample Multiplier: 1

Instrument :
 MSVOA_V
 ClientSampleId :
 BGCE2

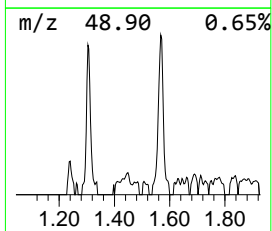
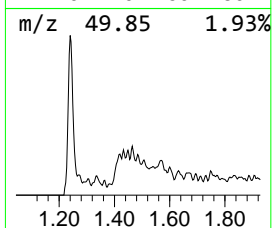
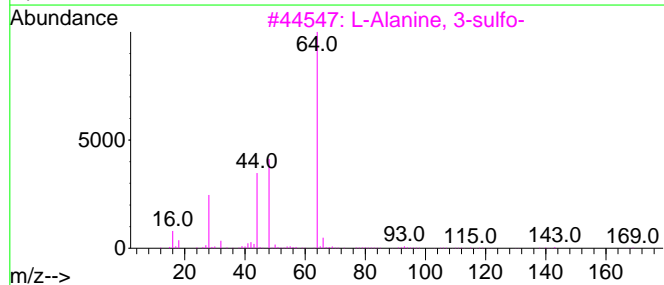
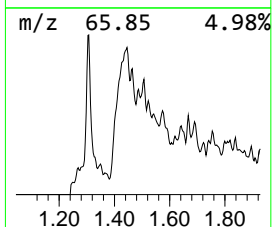
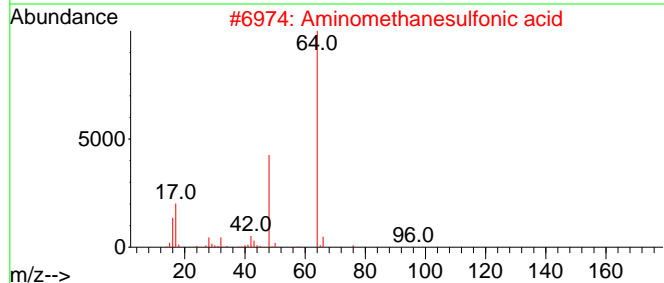
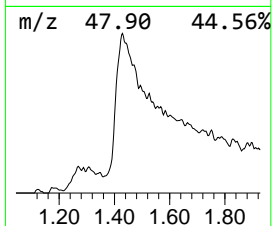
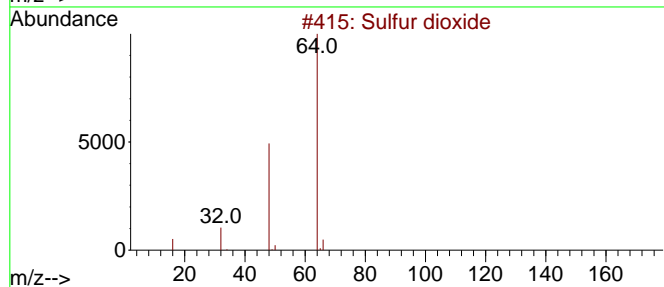
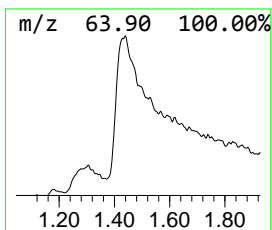
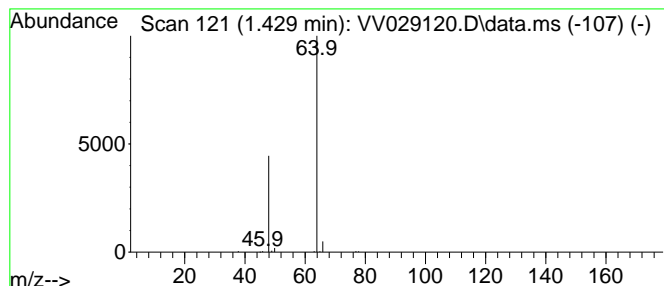
Quant Method : Z:\voasrv\HPCHEM1\MSVOA_V\Method\SFAMVTR111122WMA.M
 Quant Title : TRACE VOA SFAM1.0

TIC Library : C:\Database\NIST20.L
 TIC Integration Parameters: LSCINT.P

 Peak Number 2 Sulfur dioxide Concentration Rank 3

R.T.	EstConc	Area	Relative to ISTD	R.T.
1.429	0.64 ug/L	76823	1,4-Difluorobenzene	5.612

Hit#	of 5	Tentative ID	MW	MolForm	CAS#	Qual
1		Sulfur dioxide	64	O2S	007446-09-5	90
2		Aminomethanesulfonic acid	111	CH5NO3S	013881-91-9	64
3		L-Alanine, 3-sulfo-	169	C3H7NO5S	000498-40-8	9
4		Sulfur dioxide	64	O2S	007446-09-5	7
5		Ethene, 1,1-difluoro-	64	C2H2F2	000075-38-7	4



Data Path : Z:\voasrv\HPCHEM1\MSVOA_V\Data\VW111822\
Data File : VW029120.D
Acq On : 18 Nov 2022 15:59
Operator : SY/MD
Sample : N5687-17
Misc : 25.0mL/MSVOA_V/WATER
ALS Vial : 16 Sample Multiplier: 1

Instrument :
MSVOA_V
ClientSampleId :
BGCE2

Quant Method : Z:\voasrv\HPCHEM1\MSVOA_V\Method\SFAMVTR111122WMA.M
Quant Title : TRACE VOA SFAM1.0

TIC Library : C:\Database\NIST20.L
TIC Integration Parameters: LSCINT.P

TIC Top Hit name	RT	EstConc	Units	Response	--Internal Standard--			
					#	RT	Resp	Conc
unknown-01	1.121	2.0	ug/L	245952	1	5.612	599042	5.0
Sulfur dioxide	1.429	0.6	ug/L	76823	1	5.612	599042	5.0