

Data Path : Z:\voasrv\HPCHEM1\MSVOA_V\Data\VW111822\
 Data File : VW029157.D
 Acq On : 19 Nov 2022 07:44
 Operator : SY/MD
 Sample : N5666-14
 Misc : 25.0mL/MSVOA_V/WATER
 ALS Vial : 54 Sample Multiplier: 1

Instrument :
 MSVOA_V
 ClientSampleId :
 BHB36

Integration Parameters: rteint.p

Integrator: RTE
 Smoothing : ON
 Sampling : 1
 Start Thrs : 0.1
 Stop Thrs : 0

Filtering: 5
 Min Area: 3 % of largest Peak
 Max Peaks: 100
 Peak Location: TOP

If leading or trailing edge < 100 prefer < Baseline drop else tangent >
 Peak separation: 5

Method : Z:\voasrv\HPCHEM1\MSVOA_V\Method\SFAMVTR111122WMA.M
 Title : TRACE VOA SFAM1.0

Signal : TIC: VW029157.D\data.ms

peak #	R.T. min	first scan	max scan	last scan	PK TY	peak height	corr. area	corr. % max.	% of total
1	1.108	15	21	46	rBV	699578	728668	40.01%	4.634%
2	1.217	48	55	74	rVB2	114321	120218	6.60%	0.765%
3	1.307	75	83	103	rVB2	128502	152718	8.39%	0.971%
4	1.452	112	128	142	rBV2	31892	131156	7.20%	0.834%
5	1.568	157	164	179	rVB	94948	127530	7.00%	0.811%
6	2.108	321	332	346	rVB2	187702	293007	16.09%	1.863%
7	2.764	524	536	554	rVB4	9772	20720	1.14%	0.132%
8	3.185	649	667	690	rBV2	135697	289990	15.92%	1.844%
9	3.902	875	890	930	rBV3	173656	605219	33.23%	3.849%
10	4.343	1010	1027	1048	rBV	148224	374342	20.56%	2.381%
11	4.603	1094	1108	1122	rBV4	16455	40517	2.22%	0.258%
12	5.044	1229	1245	1251	rBV2	348966	785878	43.15%	4.998%
13	5.092	1252	1260	1291	rVB2	818809	1821145	100.00%	11.582%
14	5.613	1410	1422	1446	rBV	317268	655272	35.98%	4.167%
15	5.915	1504	1516	1537	rBV2	43509	92372	5.07%	0.587%
16	6.066	1547	1563	1594	rBV	198767	421450	23.14%	2.680%
17	6.986	1838	1849	1870	rBV	81718	163385	8.97%	1.039%
18	7.310	1938	1950	1967	rBV	395917	706161	38.78%	4.491%
19	7.391	1968	1975	1998	rVB	25031	56370	3.10%	0.358%
20	7.622	2035	2047	2068	rBV	45715	88751	4.87%	0.564%
21	8.088	2181	2192	2236	rBV	402129	929159	51.02%	5.909%
22	8.847	2416	2428	2460	rBV	454186	766901	42.11%	4.877%
23	9.008	2468	2478	2503	rVB	96015	162327	8.91%	1.032%
24	9.140	2508	2519	2536	rBV	58132	100660	5.53%	0.640%
25	9.539	2631	2643	2661	rBV	106457	177326	9.74%	1.128%
26	9.928	2755	2764	2775	rBV2	12454	18829	1.03%	0.120%
27	10.211	2838	2852	2870	rBV	163191	266934	14.66%	1.698%
28	10.375	2886	2903	2915	rBV2	13533	27347	1.50%	0.174%
29	10.468	2918	2932	2946	rBV	22645	39889	2.19%	0.254%
30	10.731	3005	3014	3032	rBV2	17623	31232	1.71%	0.199%
31	10.911	3061	3070	3082	rBV2	11821	19034	1.05%	0.121%
32	11.169	3139	3150	3162	rBV	18866	34403	1.89%	0.219%
33	11.239	3162	3172	3191	rVV	477600	754634	41.44%	4.799%
34	11.329	3191	3200	3214	rVB	32695	53535	2.94%	0.340%
35	11.519	3246	3259	3278	rBV	1130028	1724623	94.70%	10.968%
36	11.616	3278	3289	3314	rVB	461499	732401	40.22%	4.658%

Data Path : Z:\voasrv\HPCHEM1\MSVOA_V\Data\VW111822\
 Data File : VV029157.D
 Acq On : 19 Nov 2022 07:44
 Operator : SY/MD
 Sample : N5666-14
 Misc : 25.0mL/MSVOA_V/WATER
 ALS Vial : 54 Sample Multiplier: 1

Instrument :
 MSVOA_V
 ClientSampleId :
 BHB36

Integration Parameters: rteint.p
 Integrator: RTE
 Smoothing : ON Filtering: 5
 Sampling : 1 Min Area: 3 % of largest Peak
 Start Thrs: 0.1 Max Peaks: 100
 Stop Thrs : 0 Peak Location: TOP

If leading or trailing edge < 100 prefer < Baseline drop else tangent >
 Peak separation: 5

Method : Z:\voasrv\HPCHEM1\MSVOA_V\Method\SFAMVTR111122WMA.M
 Title : TRACE VOA SFAM1.0

37	11.735	3315	3326	3348	rBV	530614	850599	46.71%	5.410%
38	12.008	3402	3411	3418	rBV	17593	28048	1.54%	0.178%
39	12.108	3432	3442	3459	rVB	52175	84525	4.64%	0.538%
40	12.352	3508	3518	3528	rBV	81715	126466	6.94%	0.804%
41	12.403	3528	3534	3541	rVB	14279	19157	1.05%	0.122%
42	12.458	3541	3551	3564	rBV2	86338	165378	9.08%	1.052%
43	12.715	3621	3631	3646	rBV	25843	39078	2.15%	0.249%
44	12.873	3669	3680	3691	rBV	72554	110152	6.05%	0.701%
45	12.940	3691	3701	3712	rVB3	16173	25650	1.41%	0.163%
46	13.043	3722	3733	3748	rBV4	19975	36086	1.98%	0.229%
47	13.493	3860	3873	3895	rBV	145842	248366	13.64%	1.580%
48	13.612	3899	3910	3923	rBV	129207	206350	11.33%	1.312%
49	14.805	4270	4281	4296	rBV	148499	236082	12.96%	1.501%
50	16.474	4790	4800	4812	rBV	21720	34031	1.87%	0.216%

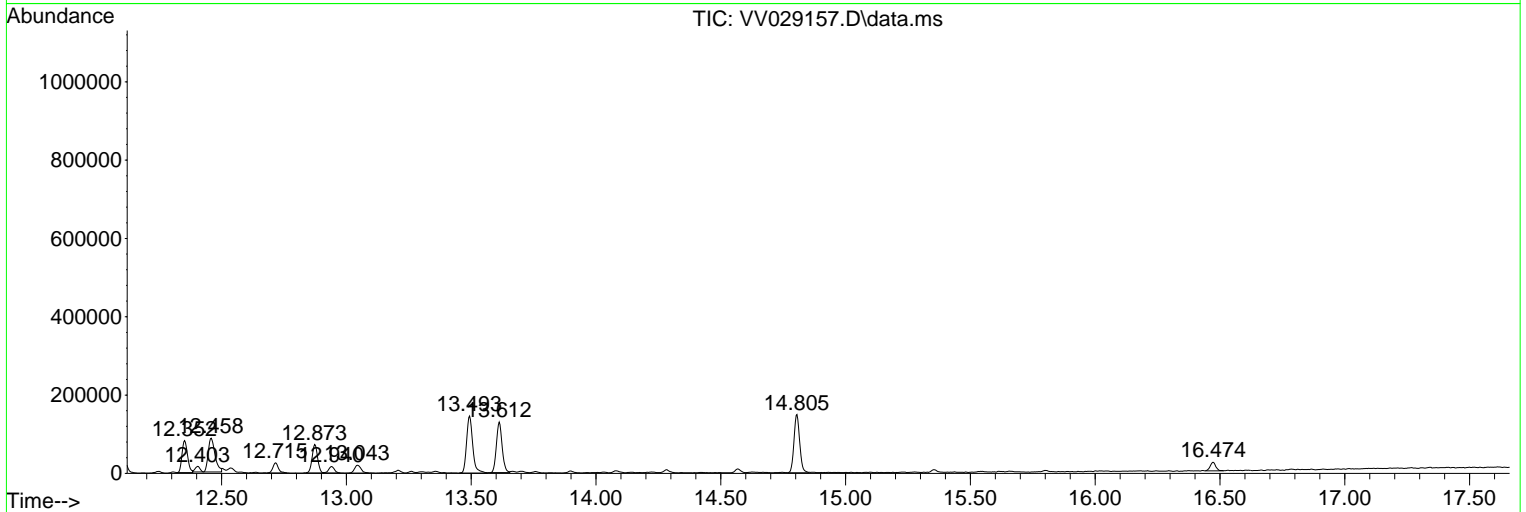
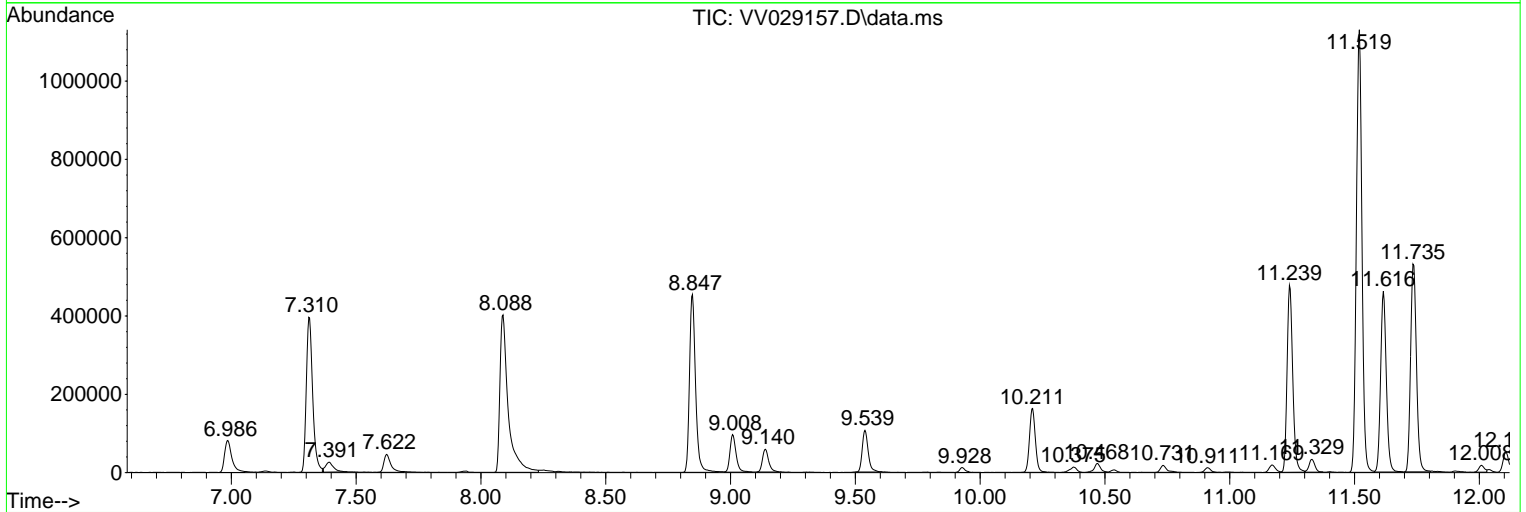
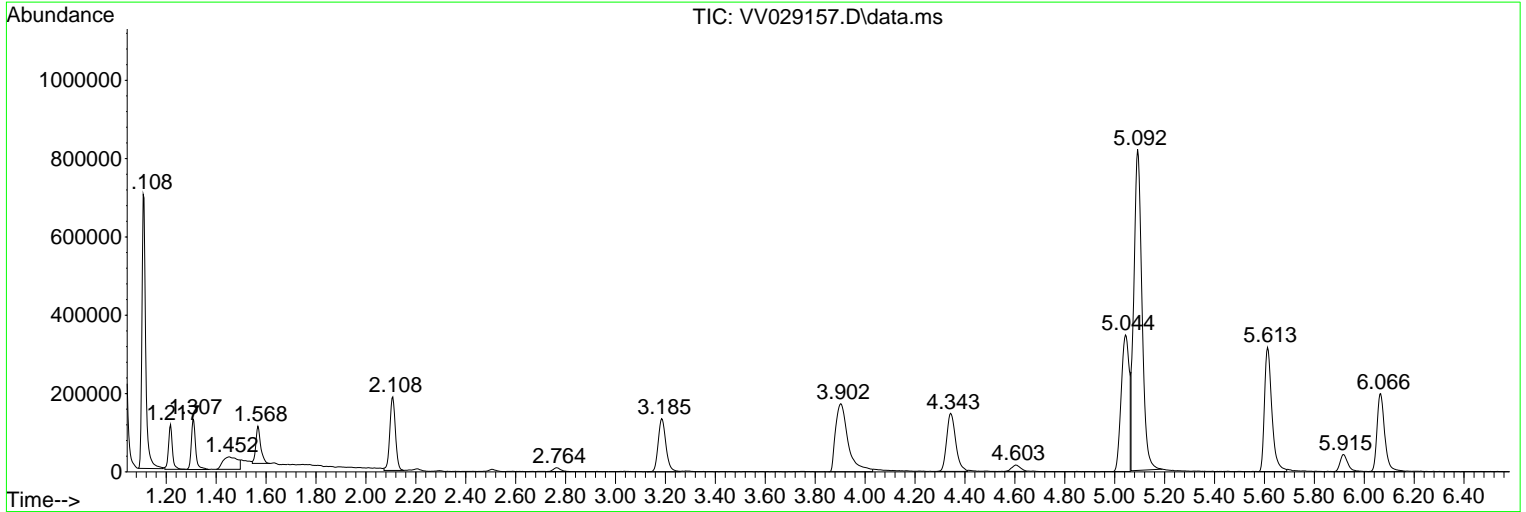
Sum of corrected areas: 15724071

Data Path : Z:\voasrv\HPCHEM1\MSVOA_V\Data\VV111822\
 Data File : VV029157.D
 Acq On : 19 Nov 2022 07:44
 Operator : SY/MD
 Sample : N5666-14
 Misc : 25.0mL/MSVOA_V/WATER
 ALS Vial : 54 Sample Multiplier: 1

Instrument :
 MSVOA_V
 ClientSampleId :
 BHB36

Quant Method : Z:\voasrv\HPCHEM1\MSVOA_V\Method\SFAMVTR111122WMA.M
 Quant Title : TRACE VOA SFAM1.0

TIC Library : C:\Database\NIST20.L
 TIC Integration Parameters: LSCINT.P



Data Path : Z:\voasrv\HPCHEM1\MSVOA_V\Data\VV111822\
 Data File : VV029157.D
 Acq On : 19 Nov 2022 07:44
 Operator : SY/MD
 Sample : N5666-14
 Misc : 25.0mL/MSVOA_V/WATER
 ALS Vial : 54 Sample Multiplier: 1

Instrument :
 MSVOA_V
 ClientSampleId :
 BHB36

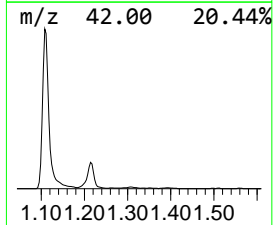
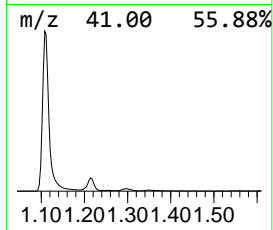
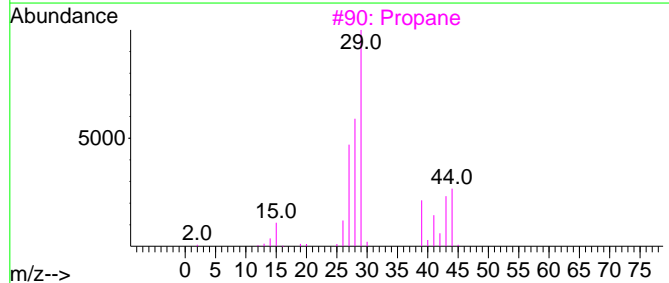
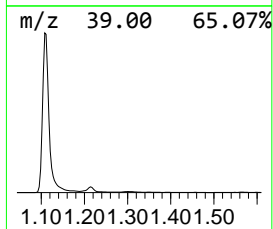
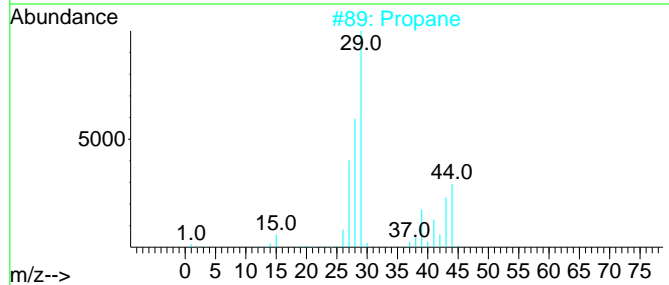
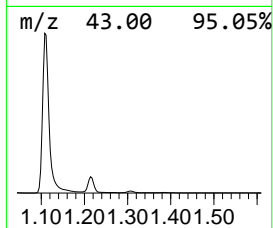
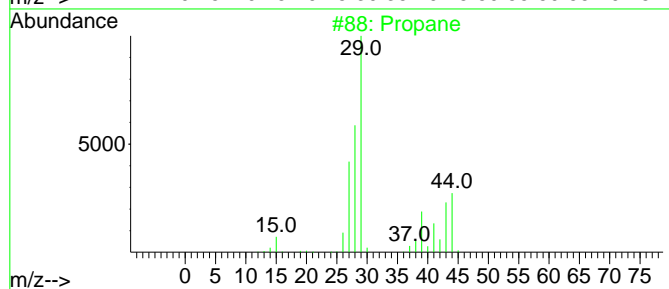
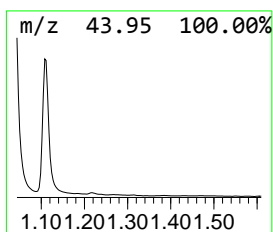
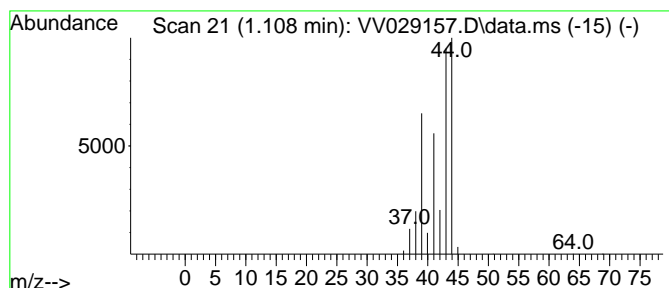
Quant Method : Z:\voasrv\HPCHEM1\MSVOA_V\Method\SFAMVTR111122WMA.M
 Quant Title : TRACE VOA SFAM1.0

TIC Library : C:\Database\NIST20.L
 TIC Integration Parameters: LSCINT.P

 Peak Number 1 (DEL) Alkane: Straight-Chai... Concentration Rank 3

R.T.	EstConc	Area	Relative to ISTD	R.T.
1.108	5.56 ug/L	728668	1,4-Difluorobenzene	5.613

Hit#	of 5	Tentative ID	MW	MolForm	CAS#	Qual
1		Propane	44	C3H8	000074-98-6	90
2		Propane	44	C3H8	000074-98-6	83
3		Propane	44	C3H8	000074-98-6	9
4		Propene	42	C3H6	000115-07-1	9
5		Acetaldehyde	44	C2H4O	000075-07-0	5



Data Path : Z:\voasrv\HPCHEM1\MSVOA_V\Data\VV111822\
 Data File : VV029157.D
 Acq On : 19 Nov 2022 07:44
 Operator : SY/MD
 Sample : N5666-14
 Misc : 25.0mL/MSVOA_V/WATER
 ALS Vial : 54 Sample Multiplier: 1

Instrument :
 MSVOA_V
 ClientSampleId :
 BHB36

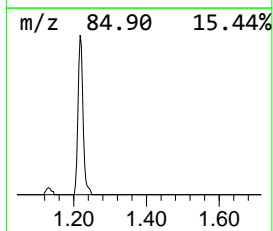
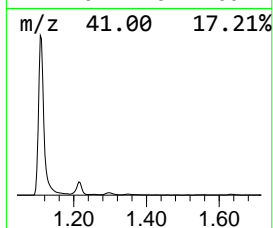
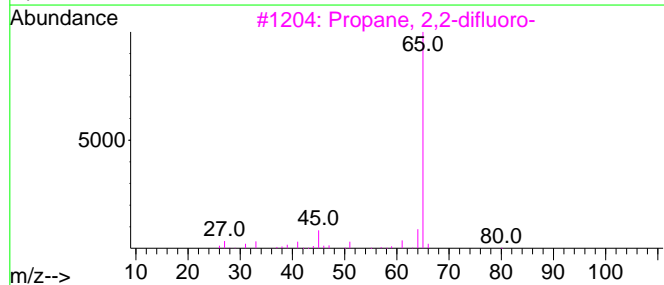
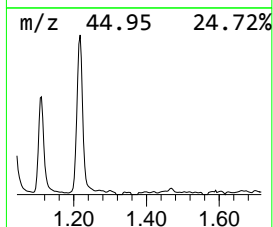
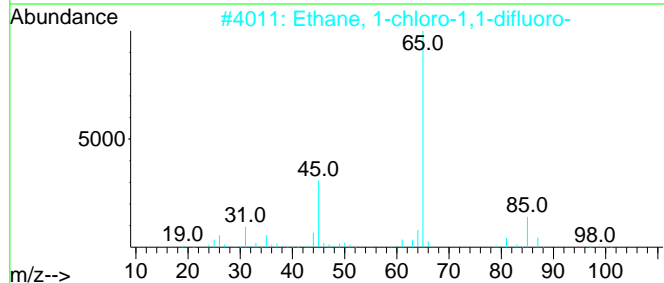
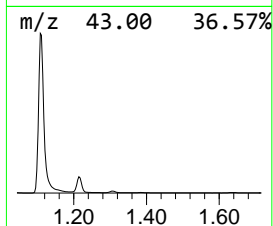
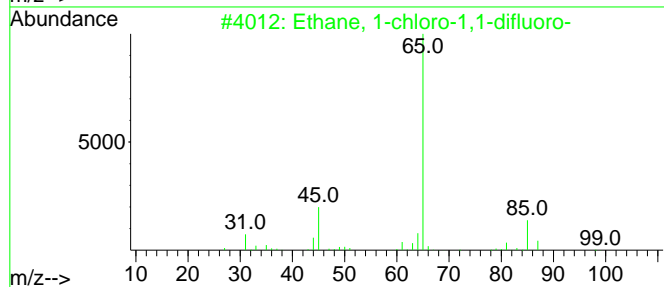
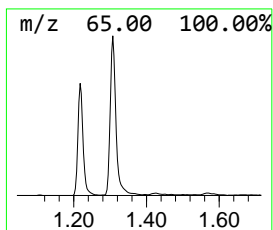
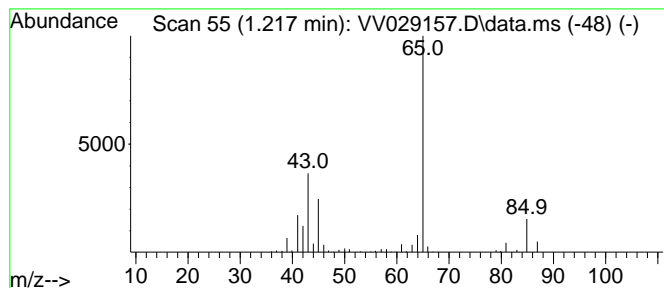
Quant Method : Z:\voasrv\HPCHEM1\MSVOA_V\Method\SFAMVTR111122WMA.M
 Quant Title : TRACE VOA SFAM1.0

TIC Library : C:\Database\NIST20.L
 TIC Integration Parameters: LSCINT.P

 Peak Number 2 Ethane, 1-chloro-1,1-difluoro- Concentration Rank 10

R.T.	EstConc	Area	Relative to ISTD	R.T.
1.217	0.92 ug/L	120218	1,4-Difluorobenzene	5.613

Hit#	of	5	Tentative ID	MW	MolForm	CAS#	Qual
1			Ethane, 1-chloro-1,1-difluoro-	100	C2H3ClF2	000075-68-3	78
2			Ethane, 1-chloro-1,1-difluoro-	100	C2H3ClF2	000075-68-3	43
3			Propane, 2,2-difluoro-	80	C3H6F2	000420-45-1	9
4			2,2-Difluoropropionic acid	110	C3H4F2O2	000373-96-6	4
5			Propane, 2,2-difluoro-	80	C3H6F2	000420-45-1	4



Data Path : Z:\voasrv\HPCHEM1\MSVOA_V\Data\VV111822\
 Data File : VV029157.D
 Acq On : 19 Nov 2022 07:44
 Operator : SY/MD
 Sample : N5666-14
 Misc : 25.0mL/MSVOA_V/WATER
 ALS Vial : 54 Sample Multiplier: 1

Instrument :
 MSVOA_V
 ClientSampleId :
 BHB36

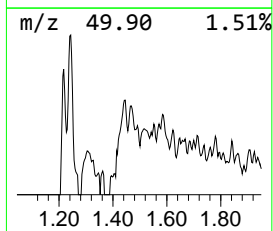
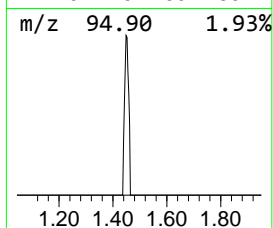
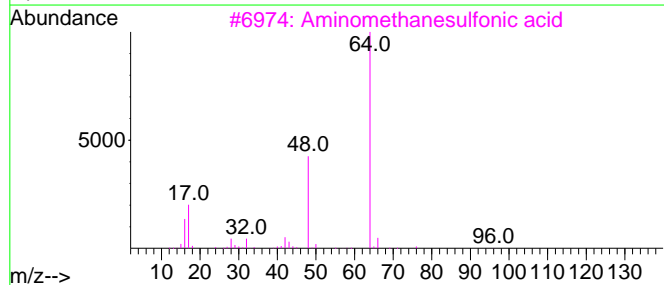
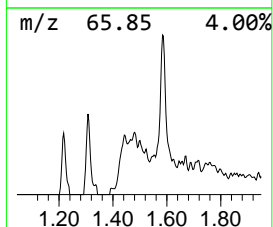
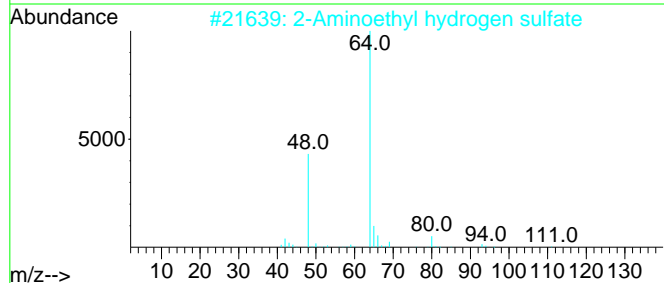
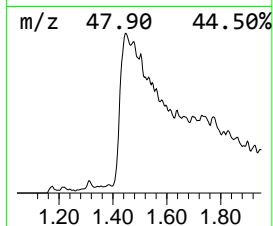
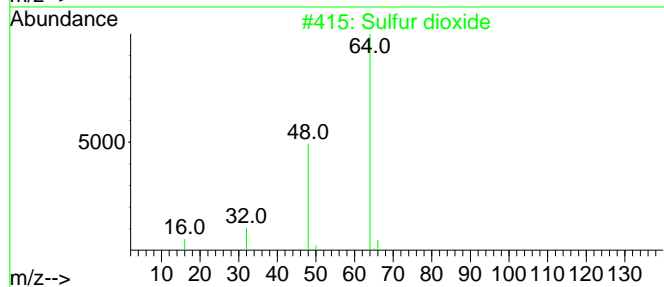
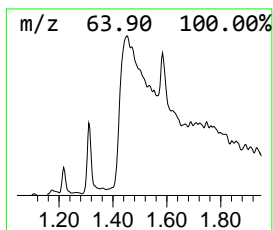
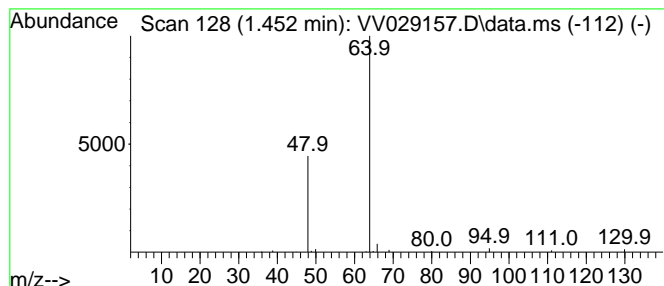
Quant Method : Z:\voasrv\HPCHEM1\MSVOA_V\Method\SFAMVTR111122WMA.M
 Quant Title : TRACE VOA SFAM1.0

TIC Library : C:\Database\NIST20.L
 TIC Integration Parameters: LSCINT.P

 Peak Number 3 Sulfur dioxide Concentration Rank 9

R.T.	EstConc	Area	Relative to ISTD	R.T.
1.452	1.00 ug/L	131156	1,4-Difluorobenzene	5.613

Hit#	of	5	Tentative ID	MW	MolForm	CAS#	Qual
1			Sulfur dioxide	64	O2S	007446-09-5	90
2			2-Aminoethyl hydrogen sulfate	141	C2H7NO4S	000926-39-6	74
3			Aminomethanesulfonic acid	111	CH5NO3S	013881-91-9	64
4			(N-(-2-Acetamido))-2-aminoethane...	182	C4H10N2O4S	007365-82-4	9
5			Aminomethanesulfonic acid	111	CH5NO3S	013881-91-9	9



Data Path : Z:\voasrv\HPCHEM1\MSVOA_V\Data\VV111822\
 Data File : VV029157.D
 Acq On : 19 Nov 2022 07:44
 Operator : SY/MD
 Sample : N5666-14
 Misc : 25.0mL/MSVOA_V/WATER
 ALS Vial : 54 Sample Multiplier: 1

Instrument :
 MSVOA_V
 ClientSampleId :
 BHB36

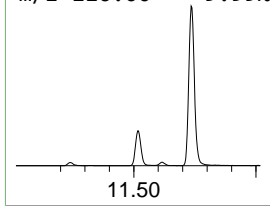
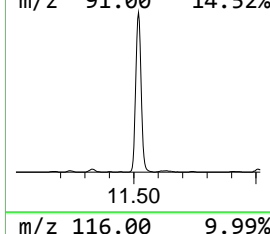
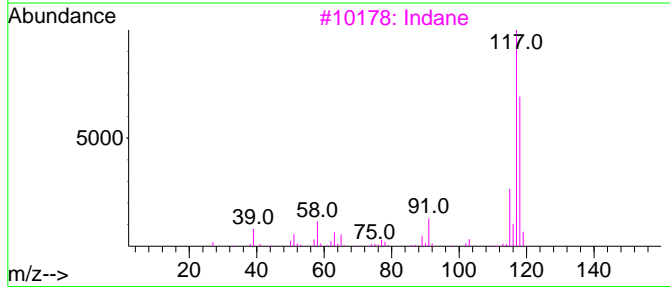
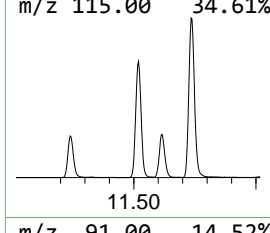
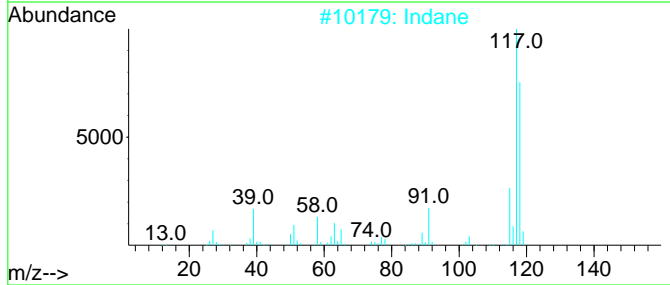
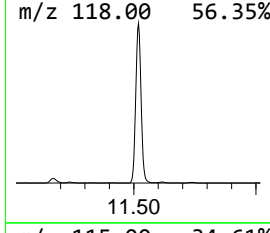
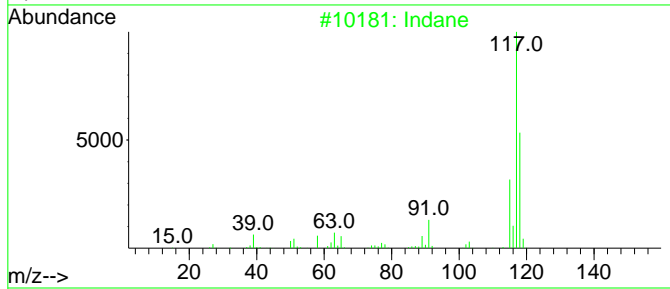
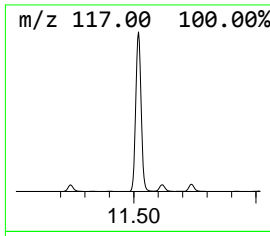
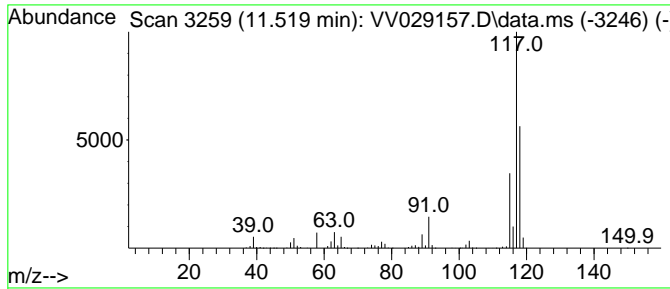
Quant Method : Z:\voasrv\HPCHEM1\MSVOA_V\Method\SFAMVTR111122WMA.M
 Quant Title : TRACE VOA SFAM1.0

TIC Library : C:\Database\NIST20.L
 TIC Integration Parameters: LSCINT.P

 Peak Number 5 Indane Concentration Rank 1

R.T.	EstConc	Area	Relative to ISTD	R.T.
11.519	11.43 ug/L	1724620	1,4-Dichlorobenzene-d4	11.239

Hit#	of	5	Tentative ID	MW	MolForm	CAS#	Qual
1			Indane	118	C9H10	000496-11-7	95
2			Indane	118	C9H10	000496-11-7	91
3			Indane	118	C9H10	000496-11-7	91
4			Benzene, 1-ethenyl-4-methyl-	118	C9H10	000622-97-9	74
5			Tetracyclo[3.3.1.0(2,8).0(4,6)]-...	118	C9H10	1000191-13-7	72



Data Path : Z:\voasrv\HPCHEM1\MSVOA_V\Data\VV111822\
 Data File : VV029157.D
 Acq On : 19 Nov 2022 07:44
 Operator : SY/MD
 Sample : N5666-14
 Misc : 25.0mL/MSVOA_V/WATER
 ALS Vial : 54 Sample Multiplier: 1

Instrument :
 MSVOA_V
 ClientSampleId :
 BHB36

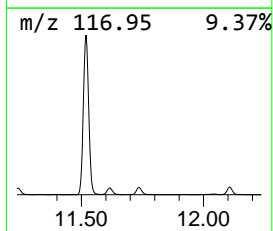
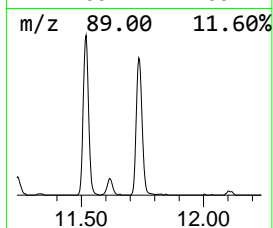
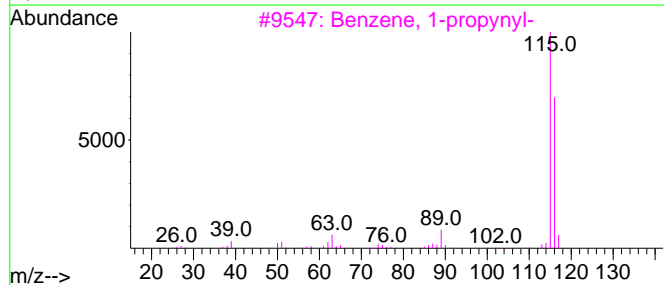
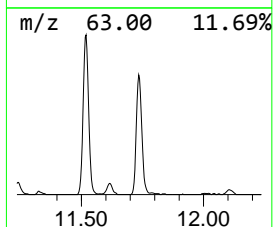
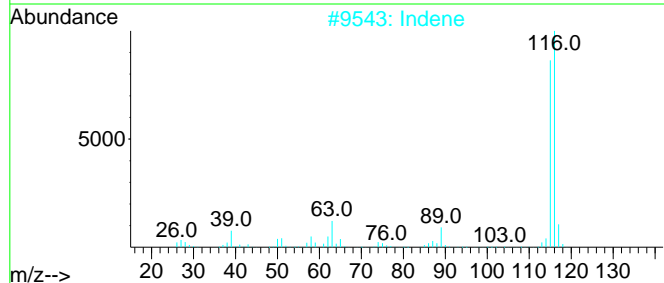
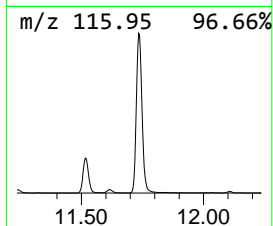
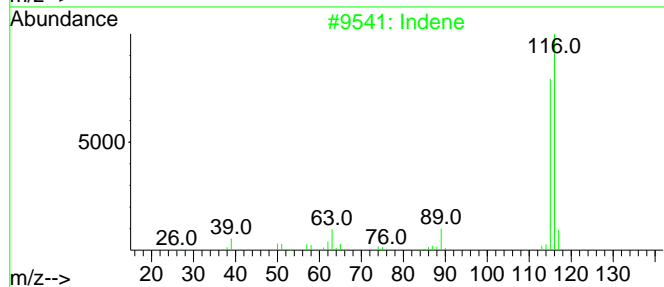
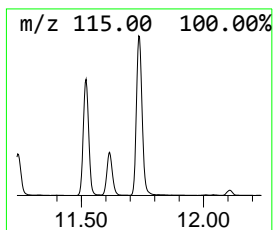
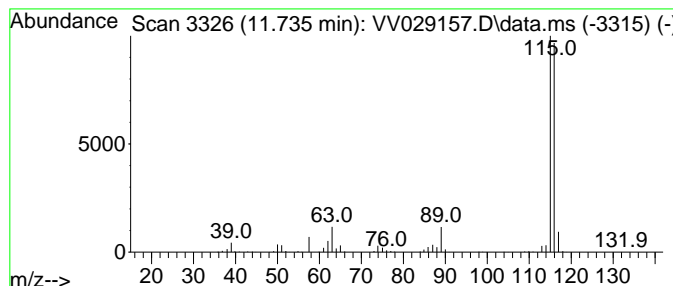
Quant Method : Z:\voasrv\HPCHEM1\MSVOA_V\Method\SFAMVTR111122WMA.M
 Quant Title : TRACE VOA SFAM1.0

TIC Library : C:\Database\NIST20.L
 TIC Integration Parameters: LSCINT.P

 Peak Number 6 Indene Concentration Rank 2

R.T.	EstConc	Area	Relative to ISTD	R.T.
11.735	5.64 ug/L	850599	1,4-Dichlorobenzene-d4	11.239

Hit#	of	Tentative ID	MW	MolForm	CAS#	Qual
1	5	Indene	116	C9H8	000095-13-6	97
2		Indene	116	C9H8	000095-13-6	95
3		Benzene, 1-propynyl-	116	C9H8	000673-32-5	94
4		3-Methylphenylacetylene	116	C9H8	000766-82-5	91
5		Benzene, 1-ethynyl-4-methyl-	116	C9H8	000766-97-2	91



Data Path : Z:\voasrv\HPCHEM1\MSVOA_V\Data\VV111822\
 Data File : VV029157.D
 Acq On : 19 Nov 2022 07:44
 Operator : SY/MD
 Sample : N5666-14
 Misc : 25.0mL/MSVOA_V/WATER
 ALS Vial : 54 Sample Multiplier: 1

Instrument :
 MSVOA_V
 ClientSampleId :
 BHB36

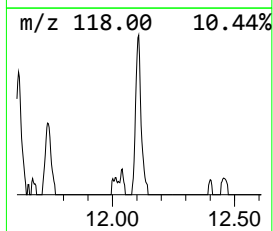
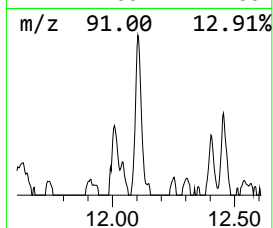
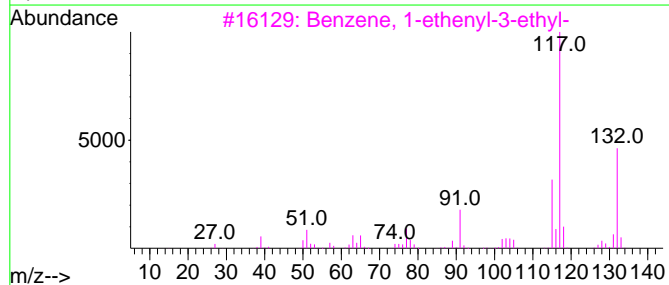
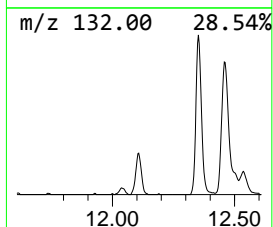
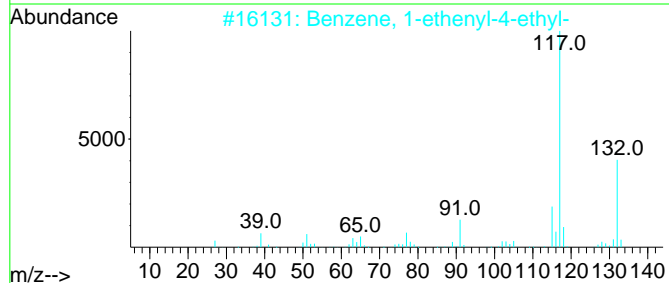
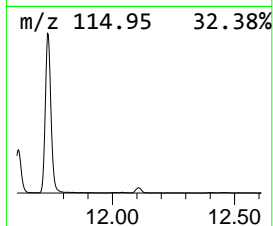
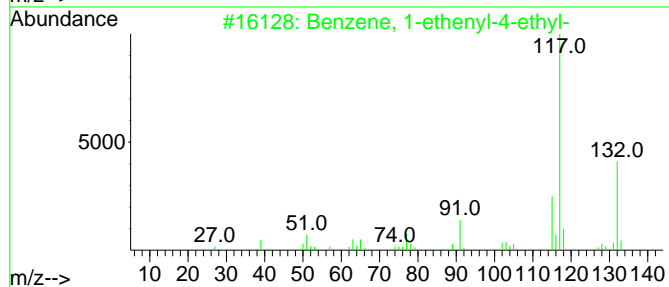
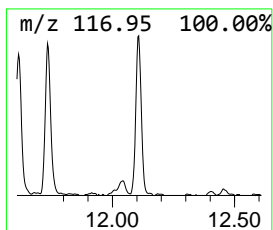
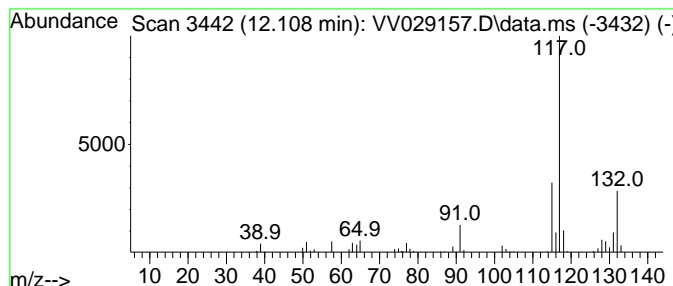
Quant Method : Z:\voasrv\HPCHEM1\MSVOA_V\Method\SFAMVTR111122WMA.M
 Quant Title : TRACE VOA SFAM1.0

TIC Library : C:\Database\NIST20.L
 TIC Integration Parameters: LSCINT.P

 Peak Number 7 Benzene, 1-ethenyl-4-ethyl- Concentration Rank 13

R.T.	EstConc	Area	Relative to ISTD	R.T.
12.108	0.56 ug/L	84525	1,4-Dichlorobenzene-d4	11.239

Hit#	of	5	Tentative ID	MW	MolForm	CAS#	Qual
1			Benzene, 1-ethenyl-4-ethyl-	132	C10H12	003454-07-7	87
2			Benzene, 1-ethenyl-4-ethyl-	132	C10H12	003454-07-7	87
3			Benzene, 1-ethenyl-3-ethyl-	132	C10H12	007525-62-4	87
4			1-Methyl-2-phenylcyclopropane	132	C10H12	003145-76-4	87
5			Indan, 1-methyl-	132	C10H12	000767-58-8	87



Data Path : Z:\voasrv\HPCHEM1\MSVOA_V\Data\VV111822\
 Data File : VV029157.D
 Acq On : 19 Nov 2022 07:44
 Operator : SY/MD
 Sample : N5666-14
 Misc : 25.0mL/MSVOA_V/WATER
 ALS Vial : 54 Sample Multiplier: 1

Instrument :
 MSVOA_V
 ClientSampleId :
 BHB36

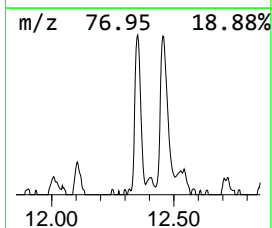
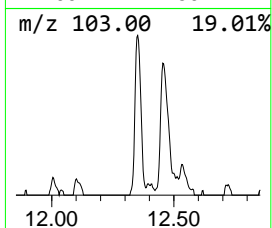
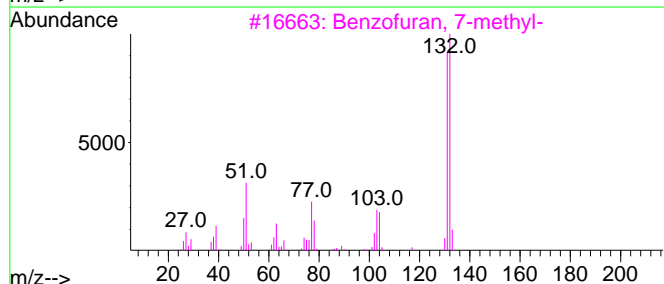
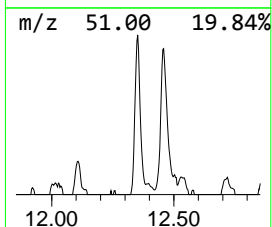
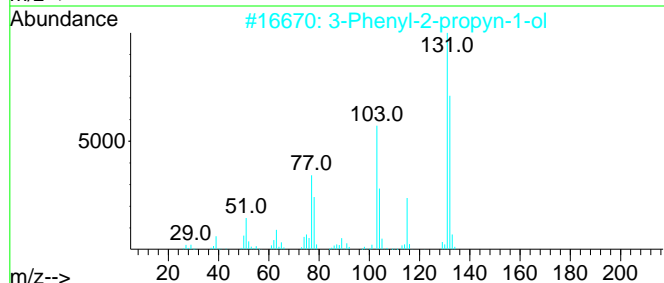
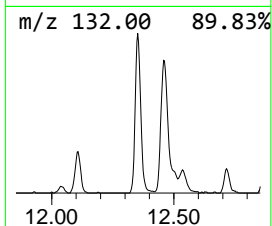
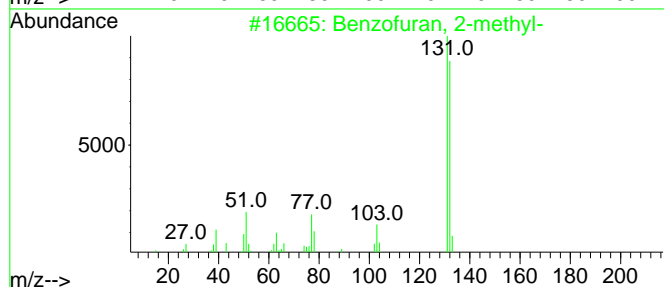
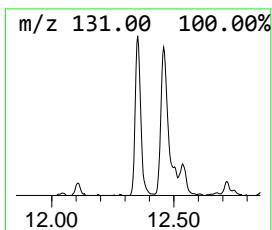
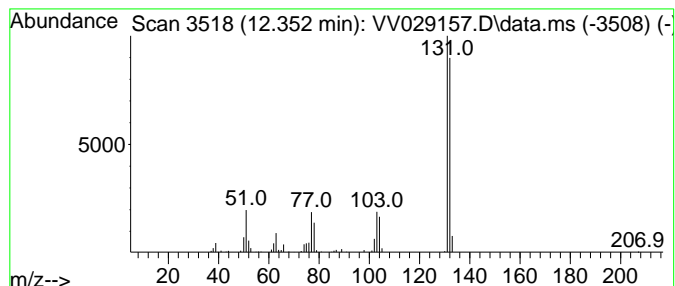
Quant Method : Z:\voasrv\HPCHEM1\MSVOA_V\Method\SFAMVTR111122WMA.M
 Quant Title : TRACE VOA SFAM1.0

TIC Library : C:\Database\NIST20.L
 TIC Integration Parameters: LSCINT.P

 Peak Number 8 Benzofuran, 2-methyl- Concentration Rank 11

R.T.	EstConc	Area	Relative to ISTD	R.T.
12.352	0.84 ug/L	126466	1,4-Dichlorobenzene-d4	11.239

Hit#	of	5	Tentative ID	MW	MolForm	CAS#	Qual
1			Benzofuran, 2-methyl-	132	C9H8O	004265-25-2	95
2			3-Phenyl-2-propyn-1-ol	132	C9H8O	001504-58-1	94
3			Benzofuran, 7-methyl-	132	C9H8O	017059-52-8	94
4			2-Propenal, 3-phenyl-	132	C9H8O	000104-55-2	94
5			Benzofuran, 2-methyl-	132	C9H8O	004265-25-2	94



Data Path : Z:\voasrv\HPCHEM1\MSVOA_V\Data\VV111822\
 Data File : VV029157.D
 Acq On : 19 Nov 2022 07:44
 Operator : SY/MD
 Sample : N5666-14
 Misc : 25.0mL/MSVOA_V/WATER
 ALS Vial : 54 Sample Multiplier: 1

Instrument :
 MSVOA_V
 ClientSampleId :
 BHB36

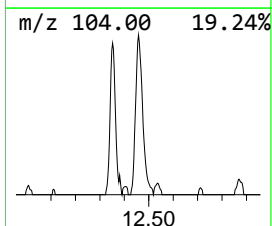
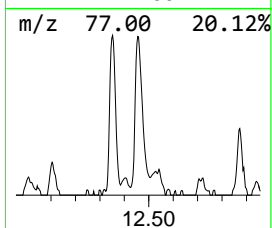
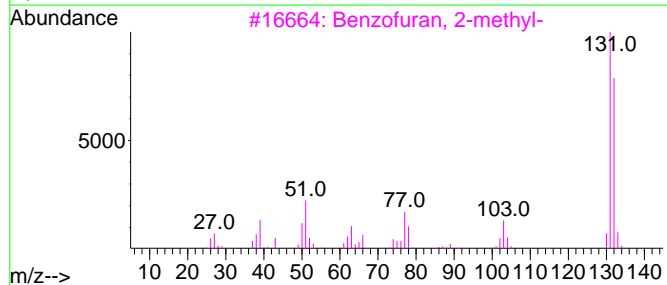
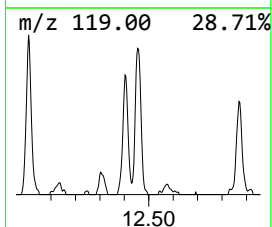
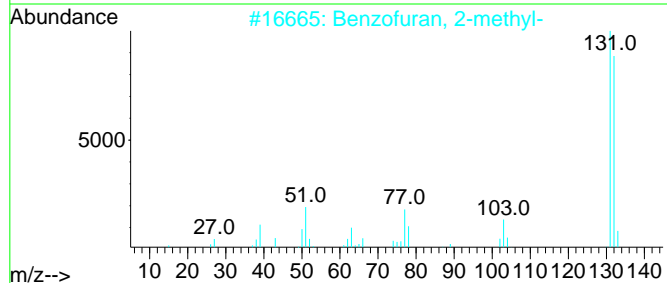
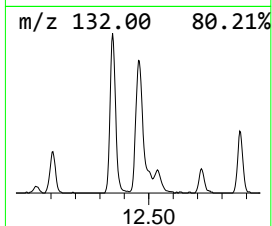
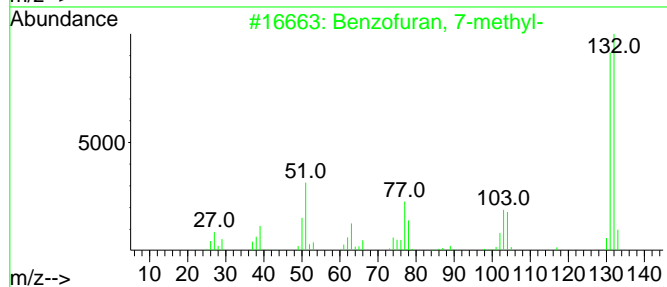
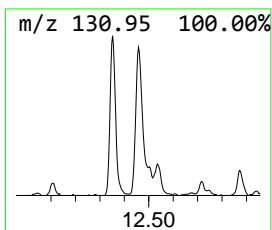
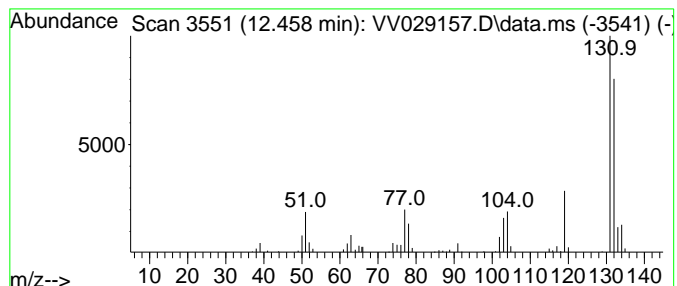
Quant Method : Z:\voasrv\HPCHEM1\MSVOA_V\Method\SFAMVTR111122WMA.M
 Quant Title : TRACE VOA SFAM1.0

TIC Library : C:\Database\NIST20.L
 TIC Integration Parameters: LSCINT.P

 Peak Number 9 Benzofuran, 7-methyl- Concentration Rank 8

R.T.	EstConc	Area	Relative to ISTD	R.T.
12.458	1.10 ug/L	165378	1,4-Dichlorobenzene-d4	11.239

Hit#	of	5	Tentative ID	MW	MolForm	CAS#	Qual
1			Benzofuran, 7-methyl-	132	C9H8O	017059-52-8	95
2			Benzofuran, 2-methyl-	132	C9H8O	004265-25-2	94
3			Benzofuran, 2-methyl-	132	C9H8O	004265-25-2	90
4			Cinnamaldehyde, (E)-	132	C9H8O	014371-10-9	87
5			3-Phenyl-2-propyn-1-ol	132	C9H8O	001504-58-1	81



Data Path : Z:\voasrv\HPCHEM1\MSVOA_V\Data\VV111822\
 Data File : VV029157.D
 Acq On : 19 Nov 2022 07:44
 Operator : SY/MD
 Sample : N5666-14
 Misc : 25.0mL/MSVOA_V/WATER
 ALS Vial : 54 Sample Multiplier: 1

Instrument :
 MSVOA_V
 ClientSampleId :
 BHB36

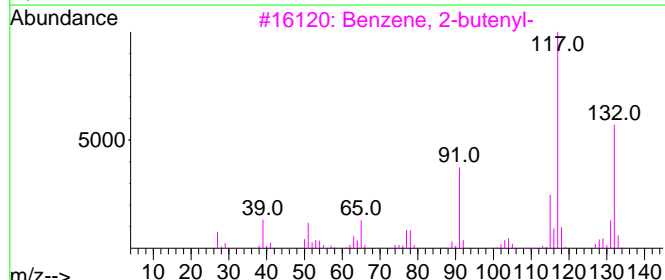
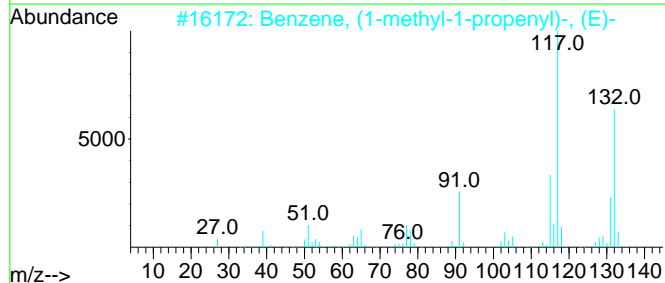
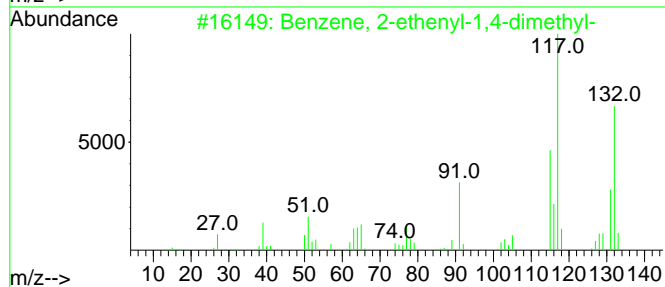
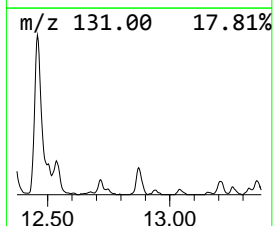
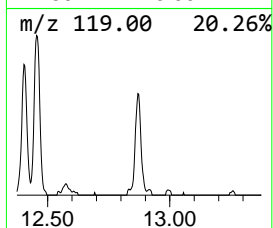
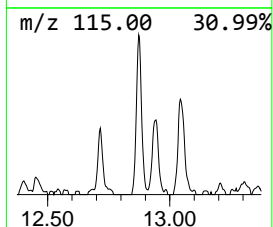
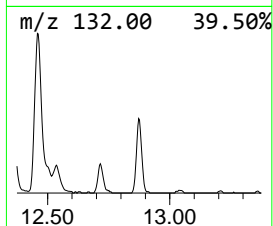
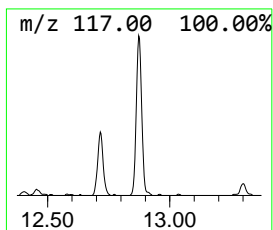
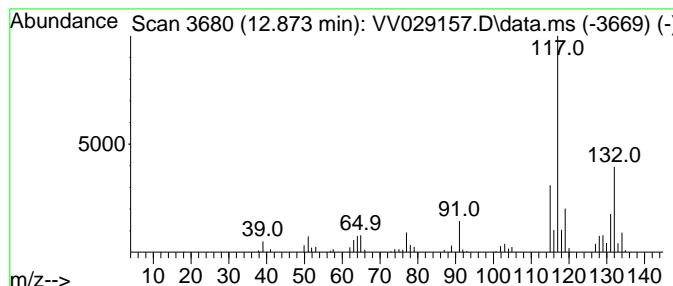
Quant Method : Z:\voasrv\HPCHEM1\MSVOA_V\Method\SFAMVTR111122WMA.M
 Quant Title : TRACE VOA SFAM1.0

TIC Library : C:\Database\NIST20.L
 TIC Integration Parameters: LSCINT.P

 Peak Number 10 Benzene, 2-ethenyl-1,4-dime... Concentration Rank 12

R.T.	EstConc	Area	Relative to ISTD	R.T.
12.873	0.73 ug/L	110152	1,4-Dichlorobenzene-d4	11.239

Hit#	of	5	Tentative ID	MW	MolForm	CAS#	Qual
1			Benzene, 2-ethenyl-1,4-dimethyl-	132	C10H12	002039-89-6	91
2			Benzene, (1-methyl-1-propenyl)-, ...	132	C10H12	000768-00-3	87
3			Benzene, 2-butenyl-	132	C10H12	001560-06-1	83
4			1-Phenyl-1-butene	132	C10H12	000824-90-8	81
5			1H-Indene, 2,3-dihydro-5-methyl-	132	C10H12	000874-35-1	81



Data Path : Z:\voasrv\HPCHEM1\MSVOA_V\Data\VV111822\
 Data File : VV029157.D
 Acq On : 19 Nov 2022 07:44
 Operator : SY/MD
 Sample : N5666-14
 Misc : 25.0mL/MSVOA_V/WATER
 ALS Vial : 54 Sample Multiplier: 1

Instrument :
 MSVOA_V
 ClientSampleId :
 BHB36

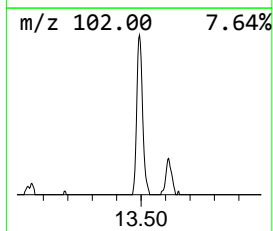
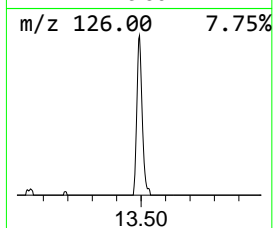
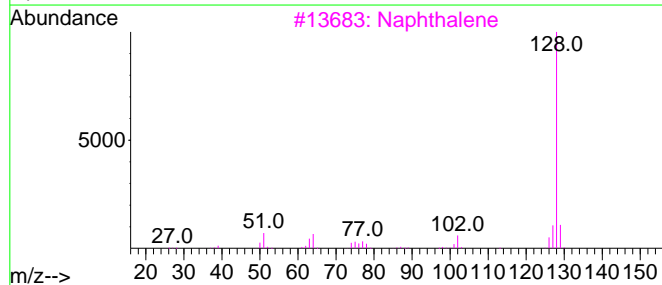
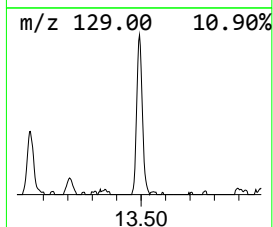
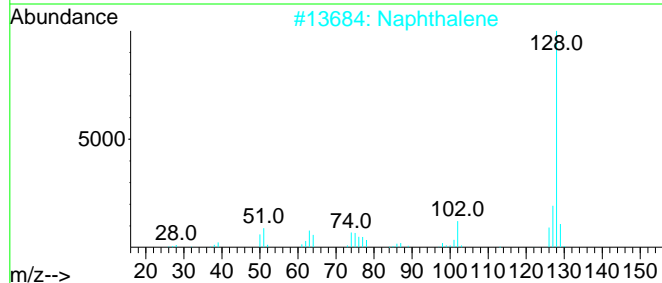
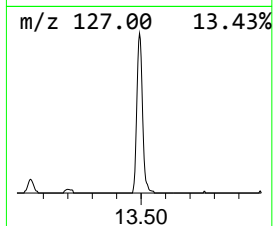
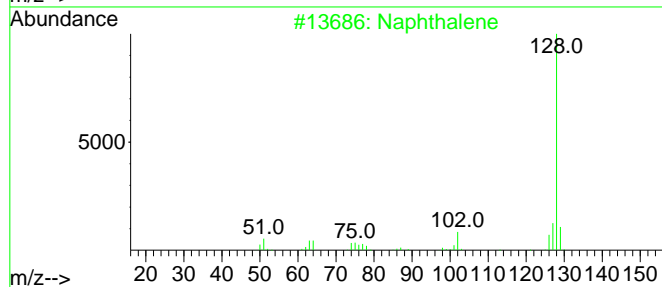
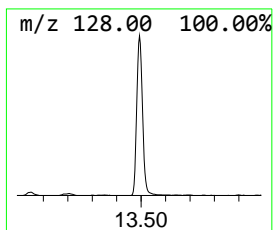
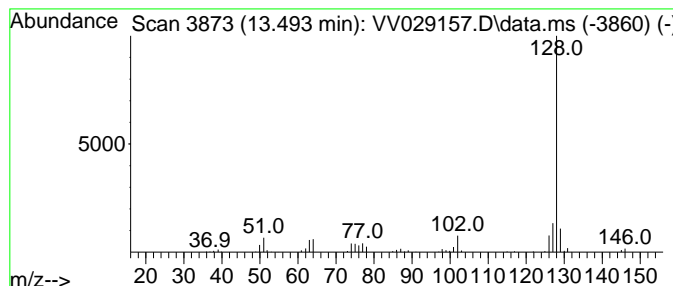
Quant Method : Z:\voasrv\HPCHEM1\MSVOA_V\Method\SFAMVTR111122WMA.M
 Quant Title : TRACE VOA SFAM1.0

TIC Library : C:\Database\NIST20.L
 TIC Integration Parameters: LSCINT.P

 Peak Number 11 Azulene Concentration Rank 4

R.T.	EstConc	Area	Relative to ISTD	R.T.
13.493	1.65 ug/L	248366	1,4-Dichlorobenzene-d4	11.239

Hit#	of 5	Tentative ID	MW	MolForm	CAS#	Qual
1		Naphthalene	128	C10H8	000091-20-3	95
2		Naphthalene	128	C10H8	000091-20-3	94
3		Naphthalene	128	C10H8	000091-20-3	94
4		Azulene	128	C10H8	000275-51-4	91
5		Azulene	128	C10H8	000275-51-4	90



Data Path : Z:\voasrv\HPCHEM1\MSVOA_V\Data\VV111822\
 Data File : VV029157.D
 Acq On : 19 Nov 2022 07:44
 Operator : SY/MD
 Sample : N5666-14
 Misc : 25.0mL/MSVOA_V/WATER
 ALS Vial : 54 Sample Multiplier: 1

Instrument :
 MSVOA_V
 ClientSampleId :
 BHB36

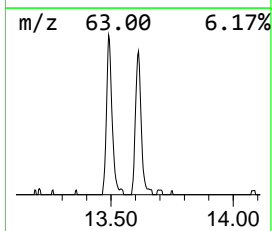
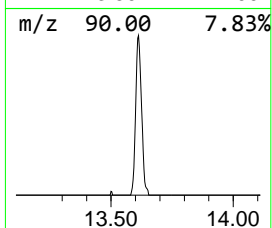
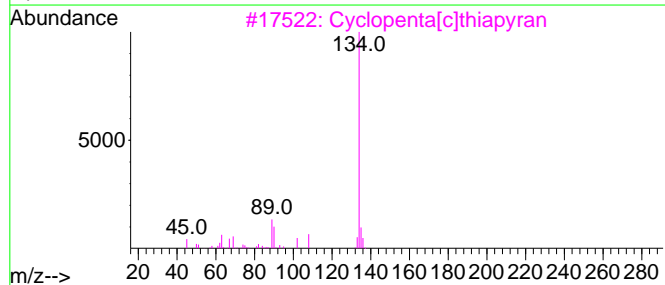
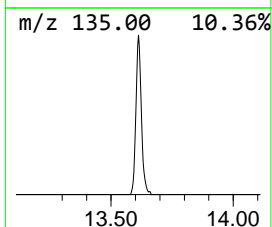
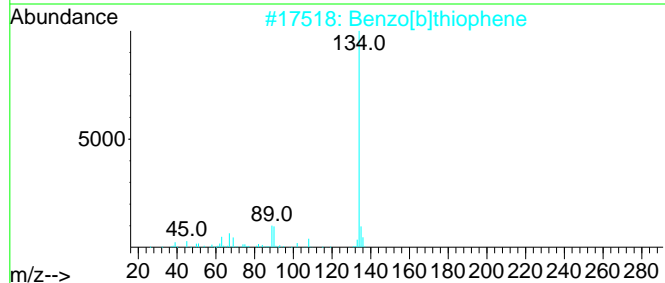
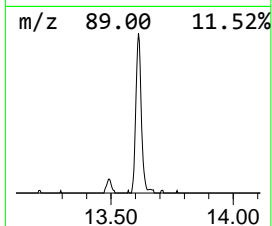
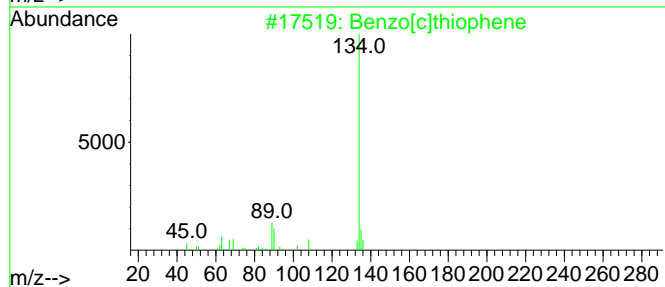
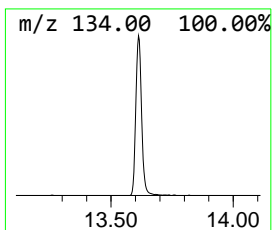
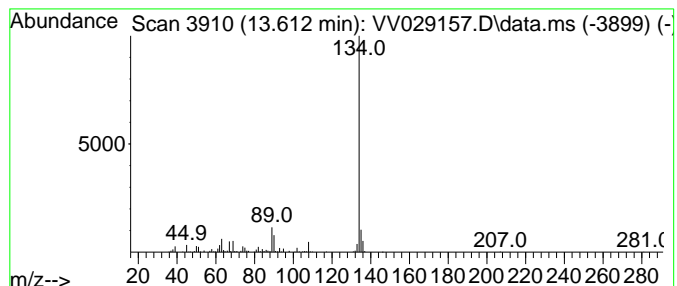
Quant Method : Z:\voasrv\HPCHEM1\MSVOA_V\Method\SFAMVTR111122WMA.M
 Quant Title : TRACE VOA SFAM1.0

TIC Library : C:\Database\NIST20.L
 TIC Integration Parameters: LSCINT.P

 Peak Number 12 Benzo[c]thiophene Concentration Rank 6

R.T.	EstConc	Area	Relative to ISTD	R.T.
13.612	1.37 ug/L	206350	1,4-Dichlorobenzene-d4	11.239

Hit#	of	5	Tentative ID	MW	MolForm	CAS#	Qual
1			Benzo[c]thiophene	134	C8H6S	000270-82-6	97
2			Benzo[b]thiophene	134	C8H6S	000095-15-8	94
3			Cyclopenta[c]thiapyran	134	C8H6S	000270-63-3	94
4			Benzo[b]thiophene	134	C8H6S	000095-15-8	91
5			Benzo[b]thiophene	134	C8H6S	000095-15-8	90



Data Path : Z:\voasrv\HPCHEM1\MSVOA_V\Data\VW111822\
 Data File : VV029157.D
 Acq On : 19 Nov 2022 07:44
 Operator : SY/MD
 Sample : N5666-14
 Misc : 25.0mL/MSVOA_V/WATER
 ALS Vial : 54 Sample Multiplier: 1

Instrument :
 MSVOA_V
 ClientSampleId :
 BHB36

Quant Method : Z:\voasrv\HPCHEM1\MSVOA_V\Method\SFAMVTR111122WMA.M
 Quant Title : TRACE VOA SFAM1.0

TIC Library : C:\Database\NIST0.L
 TIC Integration Parameters: LSCINT.P

TIC Top Hit name	RT	EstConc	Units	Response	--Internal Standard--			
					#	RT	Resp	Conc
(DEL) Alkane: S...	1.108	5.6	ug/L	728668	1	5.613	655272	5.0
Ethane, 1-chlor...	1.217	0.9	ug/L	120218	1	5.613	655272	5.0
Sulfur dioxide	1.452	1.0	ug/L	131156	1	5.613	655272	5.0
Indane	11.519	11.4	ug/L	1724620	3	11.239	754634	5.0
Indene	11.735	5.6	ug/L	850599	3	11.239	754634	5.0
Benzene, 1-ethe...	12.108	0.6	ug/L	84525	3	11.239	754634	5.0
Benzofuran, 2-m...	12.352	0.8	ug/L	126466	3	11.239	754634	5.0
Benzofuran, 7-m...	12.458	1.1	ug/L	165378	3	11.239	754634	5.0
Benzene, 2-ethe...	12.873	0.7	ug/L	110152	3	11.239	754634	5.0
Azulene	13.493	1.6	ug/L	248366	3	11.239	754634	5.0
Benzo[c]thiophene	13.612	1.4	ug/L	206350	3	11.239	754634	5.0