

Data Path : Z:\VOASRV\HPCHEM1\MSVOA V\DATA\VV111918\  
 Data File : VV008648.D  
 Acq On : 19 Nov 2018 13:59  
 Operator : SY/MD  
 Sample : J5995-04  
 Misc : 25.0 mL/MSVOA V/WATER  
 ALS Vial : 10 Sample Multiplier: 1

Instrument :  
 MSVOA\_V  
 ClientSampleId :  
 H0FJ1

Quant Time: Nov 20 07:29:48 2018  
 Quant Method : Z:\VOASRV\HPCHEM1\MSVOA\_V\METHOD\SOMVTR111718WMA.M  
 Quant Title : TRACE VOA SOM01.0  
 QLast Update : Tue Nov 20 06:56:52 2018  
 Response via : Initial Calibration

Internal Standards	R.T.	QIon	Response	Conc	Units	Dev(Min)
1) 1,4-Difluorobenzene	5.67	114	158457	5.00	ug/L	0.00
28) Chlorobenzene-d5	8.90	117	145040	5.00	ug/L	0.00
60) 1,4-Dichlorobenzene-d4	11.30	152	63367	5.00	ug/L	0.00

## System Monitoring Compounds

4) Vinyl Chloride-d3	1.32	65	27324	3.88	ug/L	0.00
Spiked Amount	5.000	Range	40 - 130	Recovery	=	77.60%
7) Chloroethane-d5	1.58	69	23131	3.99	ug/L	0.00
Spiked Amount	5.000	Range	65 - 130	Recovery	=	79.80%
11) 1,1-Dichloroethene-d2	2.13	63	44181	3.09	ug/L	0.00
Spiked Amount	5.000	Range	60 - 125	Recovery	=	61.80%
20) 2-Butanone-d5	3.96	46	108624	43.13	ug/L	-0.02
Spiked Amount	50.000	Range	40 - 130	Recovery	=	86.26%
24) Chloroform-d	4.41	84	81243	4.23	ug/L	0.00
Spiked Amount	5.000	Range	70 - 125	Recovery	=	84.60%
26) 1,2-Dichloroethane-d4	5.09	65	42152	4.30	ug/L	0.00
Spiked Amount	5.000	Range	70 - 130	Recovery	=	86.00%
32) Benzene-d6	5.10	84	156782	4.14	ug/L	0.00
Spiked Amount	5.000	Range	70 - 125	Recovery	=	82.80%
36) 1,2-Dichloropropane-d6	6.12	67	51030	4.18	ug/L	0.00
Spiked Amount	5.000	Range	60 - 140	Recovery	=	83.60%
41) Toluene-d8	7.36	98	140128	3.94	ug/L	0.00
Spiked Amount	5.000	Range	70 - 130	Recovery	=	78.80%
43) trans-1,3-Dichloropropene-	7.67	79	16899	3.63	ug/L	0.00
Spiked Amount	5.000	Range	55 - 130	Recovery	=	72.60%
46) 2-Hexanone-d5	8.14	63	82809	39.28	ug/L	0.00
Spiked Amount	50.000	Range	45 - 130	Recovery	=	78.56%
57) 1,1,2,2-Tetrachloroethane-	10.26	84	35439	4.16	ug/L	0.00
Spiked Amount	5.000	Range	65 - 120	Recovery	=	83.20%
64) 1,2-Dichlorobenzene-d4	11.68	152	47247	4.13	ug/L	0.00
Spiked Amount	5.000	Range	80 - 120	Recovery	=	82.60%

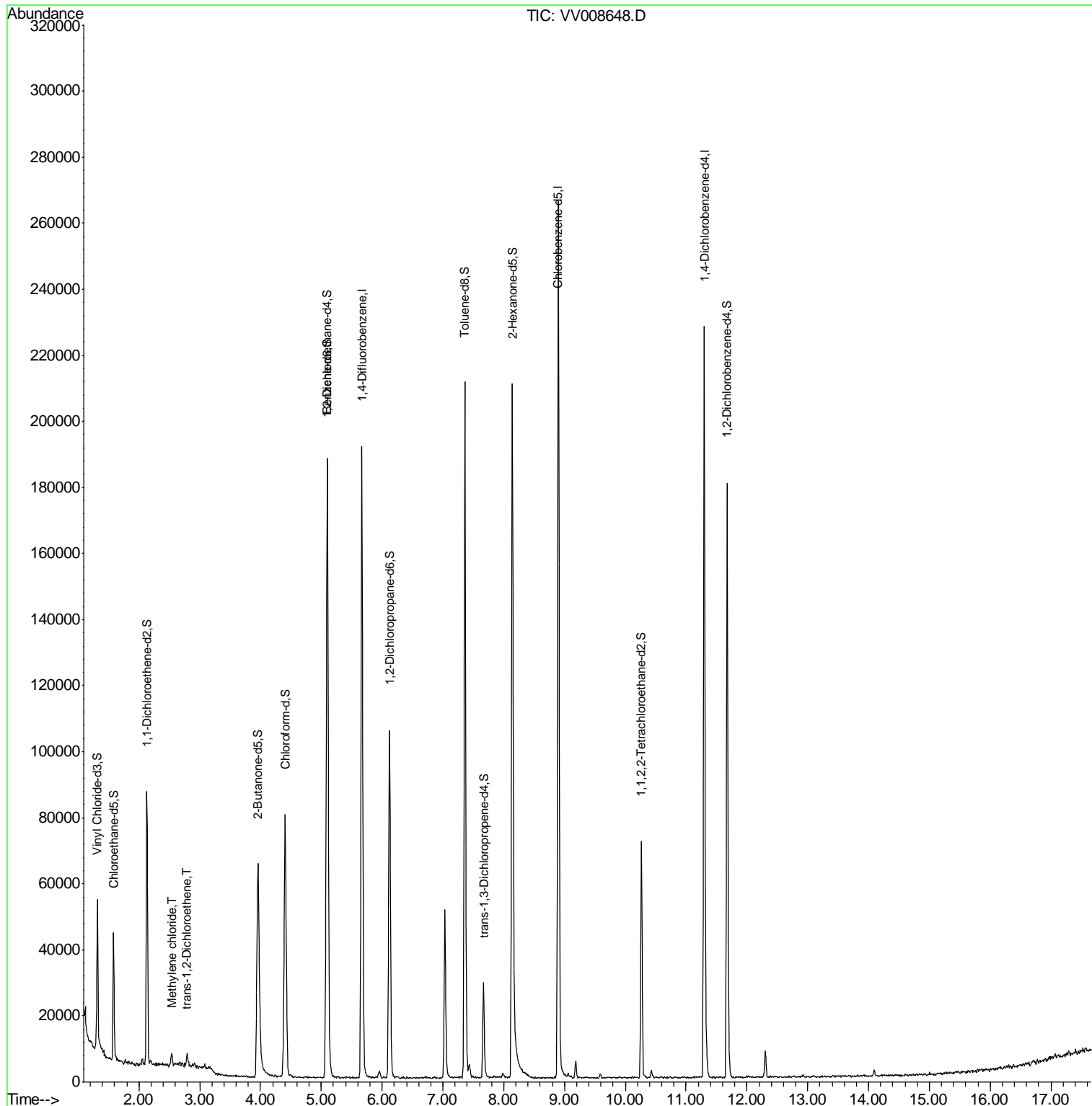
Target Compounds					Ovalue
16) Methylene chloride	2.54	84	1338	0.150 ug/L	95
18) trans-1,2-Dichloroethene	2.79	96	1239	0.155 ug/L	89

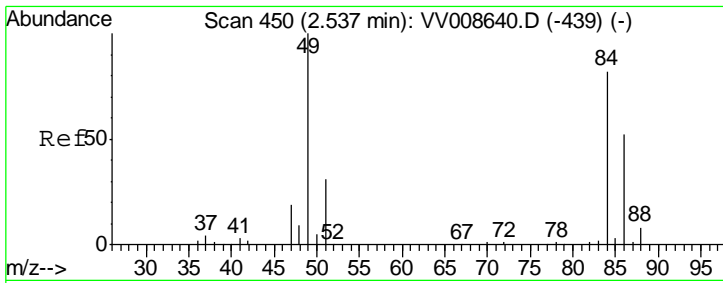
(#) = qualifier out of range (m) = manual integration (+) = signals summed

Data Path : Z:\VOASRV\HPCHEM1\MSVOA V\DATA\VV111918\  
Data File : VV008648.D  
Acq On : 19 Nov 2018 13:59  
Operator : SY/MD  
Sample : J5995-04  
Misc : 25.0 mL/MSVOA V/WATER  
ALS Vial : 10 Sample Multiplier: 1

Instrument :  
MSVOA\_V  
ClientSampled :  
H0FJ1

Quant Time: Nov 20 07:29:48 2018  
Quant Method : Z:\VOASRV\HPCHEM1\MSVOA\_V\METHOD\SOMVTR111718WMA.M  
Quant Title : TRACE VOA SOM01.0  
QLast Update : Tue Nov 20 06:56:52 2018  
Response via : Initial Calibration

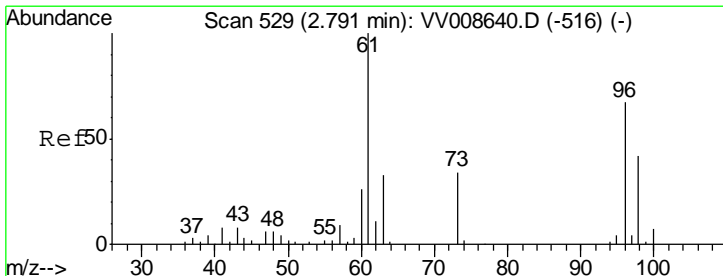
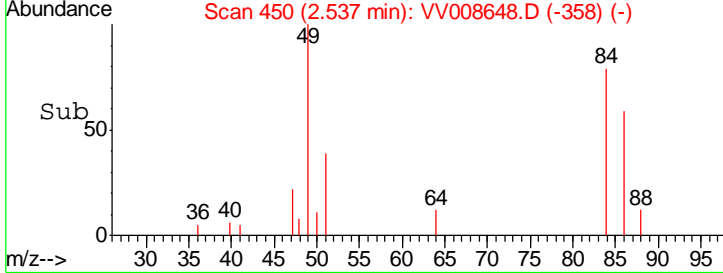
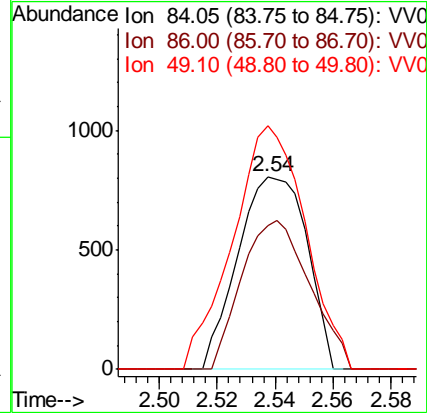
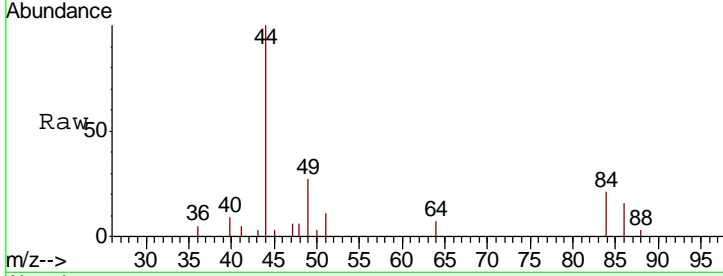




#16  
 Methylene chloride  
 Concen: 0.150 ug/L  
 RT: 2.54 min Scan# 450  
 Delta R.T. -0.00 min  
 Lab File: VV008648.D  
 Acq: 19 Nov 2018 13:59

Instrument :  
 MSVOA\_V  
 ClientSampled :  
 H0FJ1

Tgt Ion	Resp	Lower	Upper
84	1338		
84	100		
86	74.8	44.8	83.2
49	126.3	88.1	163.7



#18  
 trans-1,2-Dichloroethene  
 Concen: 0.155 ug/L  
 RT: 2.79 min Scan# 530  
 Delta R.T. 0.00 min  
 Lab File: VV008648.D  
 Acq: 19 Nov 2018 13:59

Tgt Ion	Resp	Lower	Upper
96	1239		
96	100		
61	121.4	97.1	180.3
98	58.3	41.9	77.7

