

Data Path : Z:\voasrv\HPCHEM1\MSVOA_V\Data\VW111922\
 Data File : VV029180.D
 Acq On : 19 Nov 2022 19:01
 Operator : SY/MD
 Sample : N5694-06
 Misc : 25.0mL/MSVOA_V/WATER
 ALS Vial : 23 Sample Multiplier: 1

Instrument :
 MSVOA_V
 ClientSampleId :
 BHB42

Quant Time: Nov 20 01:00:53 2022
 Quant Method : Z:\voasrv\HPCHEM1\MSVOA_V\Method\SFAMVTR111122WMA.M
 Quant Title : TRACE VOA SFAM1.0
 QLast Update : Sun Nov 20 00:53:03 2022
 Response via : Initial Calibration

Compound	R.T.	QIon	Response	Conc	Units	Dev(Min)
Internal Standards						
1) 1,4-Difluorobenzene	5.612	114	332441	5.000	ug/L	0.00
28) Chlorobenzene-d5	8.847	117	299787	5.000	ug/L	0.00
58) 1,4-Dichlorobenzene-d4	11.239	152	155780	5.000	ug/L	0.00
System Monitoring Compounds						
4) Vinyl Chloride-d3	1.307	65	110478	5.451	ug/L	0.00
Spiked Amount	5.000	Range 40 - 130	Recovery	=	109.000%	
7) Chloroethane-d5	1.567	69	86555	4.858	ug/L	0.00
Spiked Amount	5.000	Range 65 - 130	Recovery	=	97.200%	
11) 1,1-Dichloroethene-d2	2.108	63	175350	4.748	ug/L	0.00
Spiked Amount	5.000	Range 60 - 125	Recovery	=	95.000%	
20) 2-Butanone-d5	3.876	46	197854	58.318	ug/L	-0.02
Spiked Amount	50.000	Range 40 - 130	Recovery	=	116.640%	
24) Chloroform-d	4.342	84	181895	4.371	ug/L	0.00
Spiked Amount	5.000	Range 70 - 125	Recovery	=	87.400%	
26) 1,2-Dichloroethane-d4	5.027	65	85191	4.550	ug/L	0.00
Spiked Amount	5.000	Range 70 - 130	Recovery	=	91.000%	
32) Benzene-d6	5.046	84	391590	4.376	ug/L	0.00
Spiked Amount	5.000	Range 70 - 125	Recovery	=	87.600%	
36) 1,2-Dichloropropane-d6	6.066	67	115491	4.622	ug/L	0.00
Spiked Amount	5.000	Range 60 - 140	Recovery	=	92.400%	
41) Toluene-d8	7.310	98	342570	4.253	ug/L	0.00
Spiked Amount	5.000	Range 70 - 130	Recovery	=	85.000%	
43) trans-1,3-Dichloroprop...	7.619	79	34891	4.281	ug/L	0.00
Spiked Amount	5.000	Range 55 - 130	Recovery	=	85.600%	
46) 2-Hexanone-d5	8.085	63	171546	49.315	ug/L	0.00
Spiked Amount	50.000	Range 45 - 130	Recovery	=	98.640%	
56) 1,1,2,2-Tetrachloroeth...	10.207	84	79662	4.598	ug/L	0.00
Spiked Amount	5.000	Range 65 - 120	Recovery	=	92.000%	
66) 1,2-Dichlorobenzene-d4	11.615	152	131722	4.726	ug/L	0.00
Spiked Amount	5.000	Range 80 - 120	Recovery	=	94.600%	
Target Compounds						
3) Chloromethane	1.240	50	2221	0.097	ug/L	88
5) Vinyl chloride	1.310	62	98736	3.764	ug/L	90
8) Chloroethane	1.378	64	196387	12.739	ug/L #	53
12) 1,1-Dichloroethene	2.117	96	81029	4.026	ug/L	87
17) Methyl tert-butyl Ether	2.764	73	5494	0.127	ug/L #	57
18) trans-1,2-Dichloroethene	2.764	96	2478	0.106	ug/L	92
19) 1,1-Dichloroethane	3.185	63	522639	13.697	ug/L	99
22) cis-1,2-Dichloroethene	3.902	96	1001710	42.214	ug/L	99
25) Chloroform	4.365	83	6639	0.166	ug/L	85
27) 1,2-Dichloroethane	5.130	62	21424	1.040	ug/L #	93
29) 1,1,1-Trichloroethane	4.603	97	130153	3.700	ug/L	99
31) Carbon tetrachloride	4.603	117	17639	0.582	ug/L	98
33) Benzene	5.095	78	515166	5.624	ug/L	100
34) Trichloroethene	5.908	95	234856	10.014	ug/L	98
35) Methylcyclohexane	6.063	83	27668	0.671	ug/L #	22
37) 1,2-Dichloropropane	6.063	63	11518	0.545	ug/L #	85
39) cis-1,3-Dichloropropene	6.982	75	2399	0.081	ug/L #	58
42) Toluene	7.390	91	33117	0.335	ug/L	91
45) 1,1,2-Trichloroethane	7.696	97	12562	0.908	ug/L #	19

Data Path : Z:\voasrv\HPCHEM1\MSVOA_V\Data\VW111922\
 Data File : VV029180.D
 Acq On : 19 Nov 2022 19:01
 Operator : SY/MD
 Sample : N5694-06
 Misc : 25.0mL/MSVOA_V/WATER
 ALS Vial : 23 Sample Multiplier: 1

Instrument :
 MSVOA_V
 ClientSampleId :
 BHB42

Quant Time: Nov 20 01:00:53 2022
 Quant Method : Z:\voasrv\HPCHEM1\MSVOA_V\Method\SFAMVTR111122WMA.M
 Quant Title : TRACE VOA SFAM1.0
 QLast Update : Sun Nov 20 00:53:03 2022
 Response via : Initial Calibration

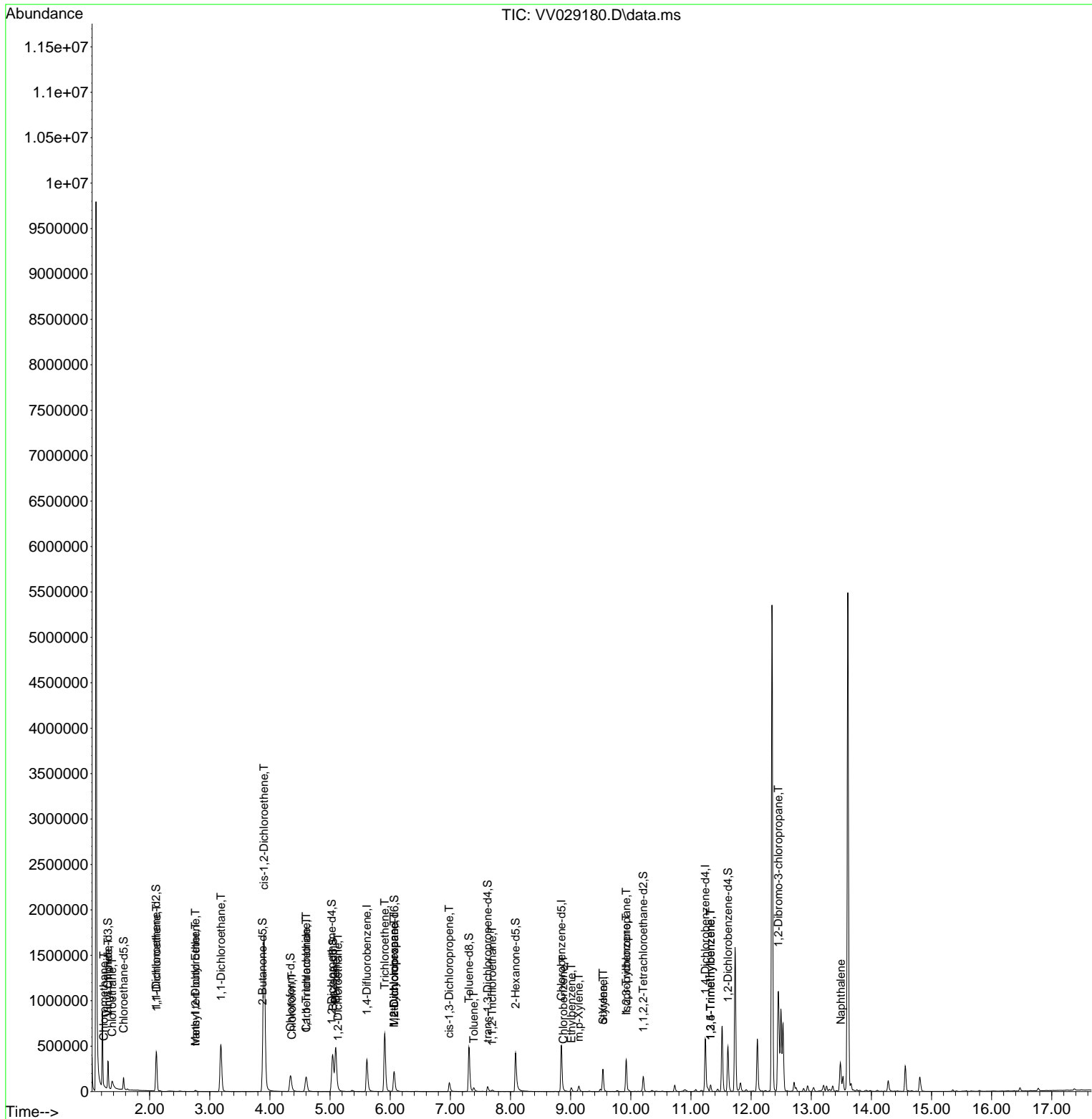
Compound	R.T.	QIon	Response	Conc	Units	Dev(Min)
51) Chlorobenzene	8.879	112	7176	0.117	ug/L	90
52) Ethylbenzene	9.011	91	30965	0.301	ug/L	97
53) m,p-Xylene	9.136	106	17409	0.425	ug/L	98
54) o-Xylene	9.538	106	68293	1.753	ug/L	98
55) Styrene	9.538	104	4816	0.074	ug/L #	1
60) Isopropylbenzene	9.924	105	235293	2.327	ug/L	99
61) 1,2,3-Trichloropropane	9.924	75	2345	0.220	ug/L #	1
62) 1,3,5-Trimethylbenzene	11.326	105	40545	0.473	ug/L	91
63) 1,2,4-Trimethylbenzene	11.326	105	40545	0.473	ug/L	95
68) 1,2-Dibromo-3-chloropr...	12.455	75	24270	11.587	ug/L #	2
71) Naphthalene	13.493	128	96785	2.706	ug/L	97

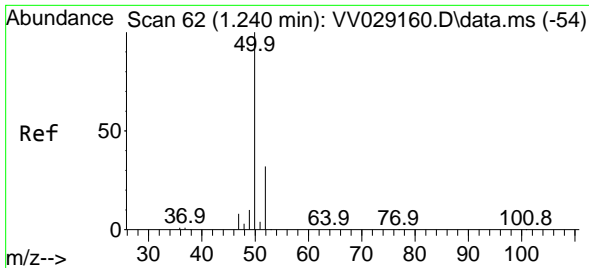
(#) = qualifier out of range (m) = manual integration (+) = signals summed

Data Path : Z:\voasrv\HPCHEM1\MSVOA_V\Data\VV111922\
 Data File : VV029180.D
 Acq On : 19 Nov 2022 19:01
 Operator : SY/MD
 Sample : N5694-06
 Misc : 25.0mL/MSVOA_V/WATER
 ALS Vial : 23 Sample Multiplier: 1

Instrument :
 MSVOA_V
 ClientSampleId :
 BHB42

Quant Time: Nov 20 01:00:53 2022
 Quant Method : Z:\voasrv\HPCHEM1\MSVOA_V\Method\SFAMVTR111122WMA.M
 Quant Title : TRACE VOA SFAM1.0
 QLast Update : Sun Nov 20 00:53:03 2022
 Response via : Initial Calibration

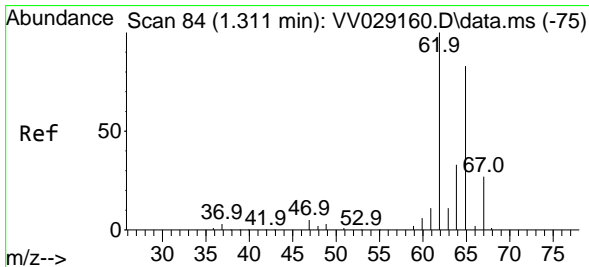
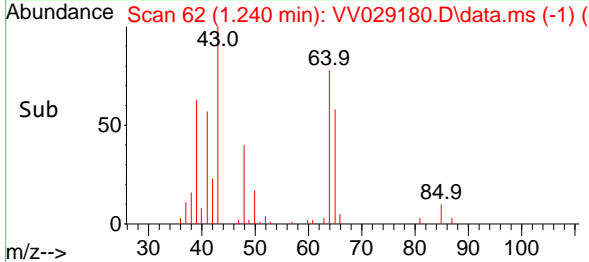
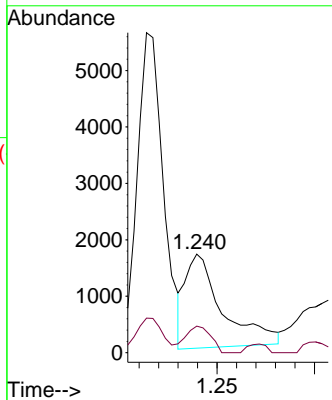
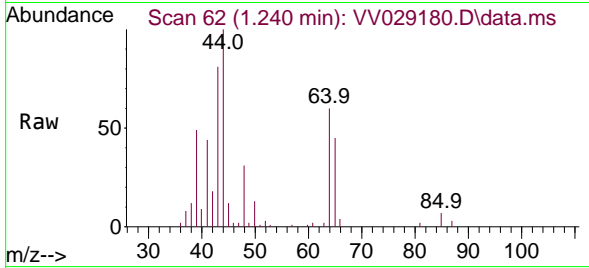




#3
 Chloromethane
 Concen: 0.097 ug/L
 RT: 1.240 min Scan# 61
 Delta R.T. -0.000 min
 Lab File: VV029180.D
 Acq: 19 Nov 2022 19:01

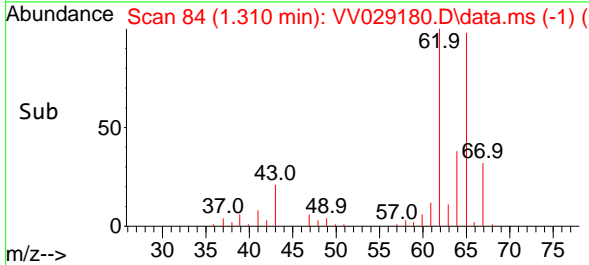
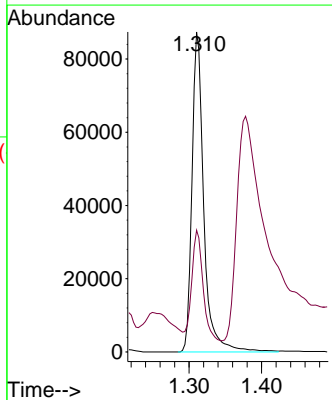
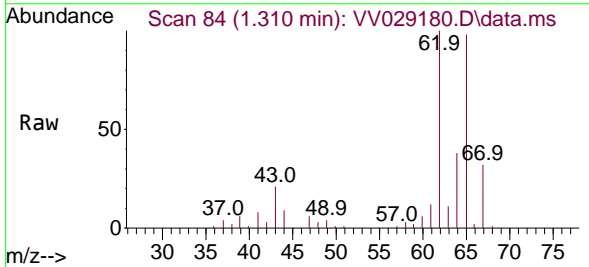
Instrument :
 MSVOA_V
 ClientSampleId :
 BHB42

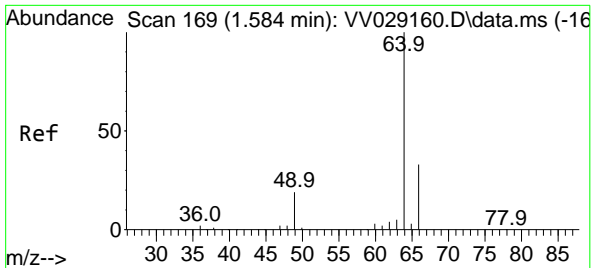
Tgt Ion: 50 Resp: 2221
 Ion Ratio Lower Upper
 50 100
 52 27.0 23.7 43.9



#5
 Vinyl chloride
 Concen: 3.764 ug/L
 RT: 1.310 min Scan# 84
 Delta R.T. -0.000 min
 Lab File: VV029180.D
 Acq: 19 Nov 2022 19:01

Tgt Ion: 62 Resp: 98736
 Ion Ratio Lower Upper
 62 100
 64 38.0 22.8 42.4

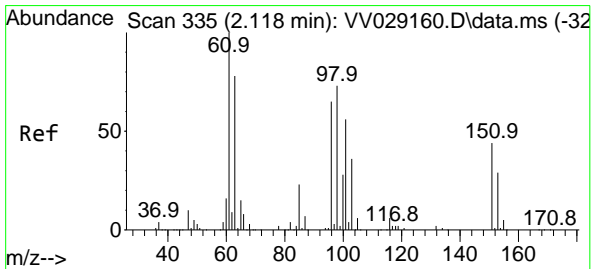
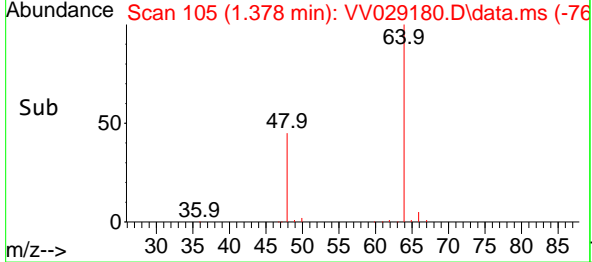
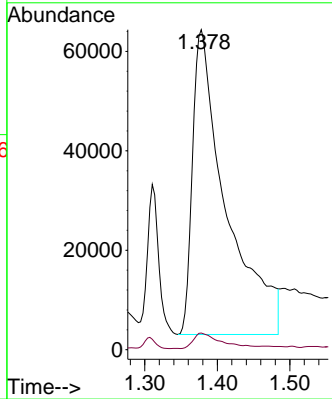
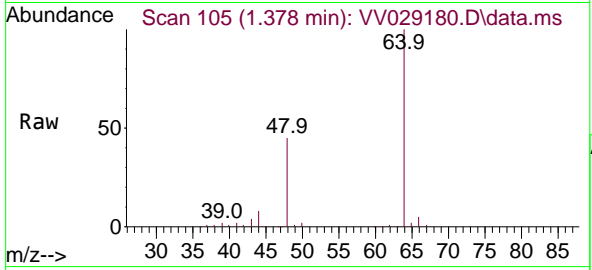




#8
 Chloroethane
 Concen: 12.739 ug/L
 RT: 1.378 min Scan# 105
 Delta R.T. -0.206 min
 Lab File: VV029180.D
 Acq: 19 Nov 2022 19:01

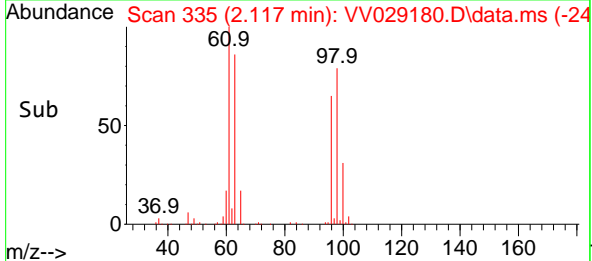
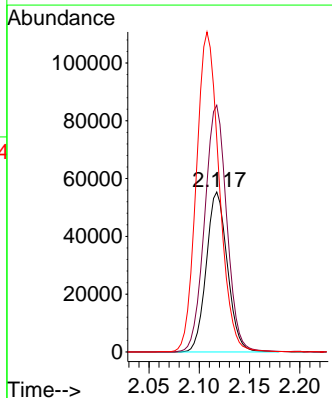
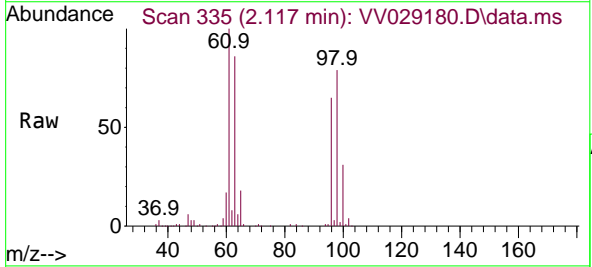
Instrument : MSVOA_V
 ClientSampleId : BHB42

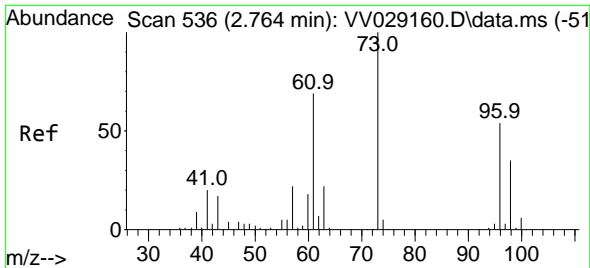
Tgt Ion: 64 Resp: 196387
 Ion Ratio Lower Upper
 64 100
 66 5.2 22.0 40.8#



#12
 1,1-Dichloroethene
 Concen: 4.026 ug/L
 RT: 2.117 min Scan# 335
 Delta R.T. -0.000 min
 Lab File: VV029180.D
 Acq: 19 Nov 2022 19:01

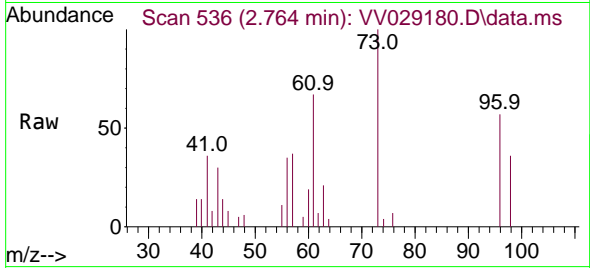
Tgt Ion: 96 Resp: 81029
 Ion Ratio Lower Upper
 96 100
 61 154.2 104.2 193.4
 63 133.4 75.9 140.9



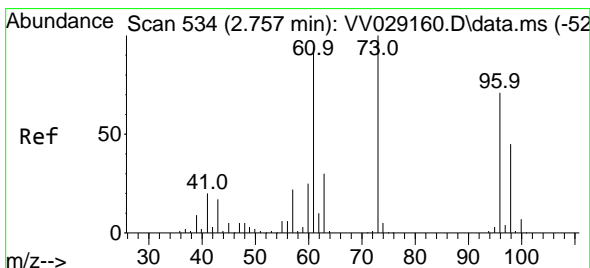
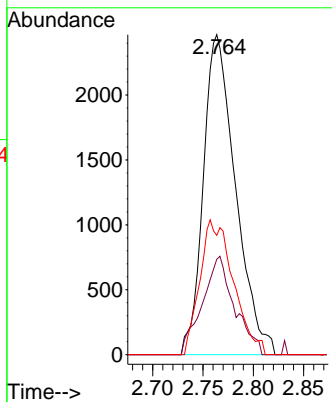
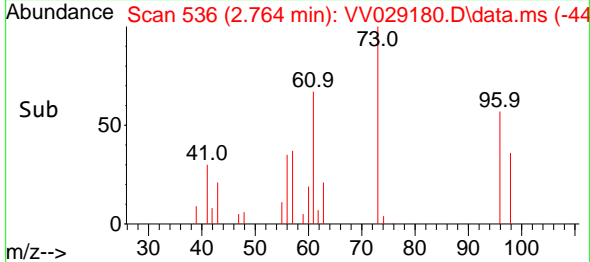


#17
 Methyl tert-butyl Ether
 Concen: 0.127 ug/L
 RT: 2.764 min Scan# 536
 Delta R.T. -0.000 min
 Lab File: VV029180.D
 Acq: 19 Nov 2022 19:01

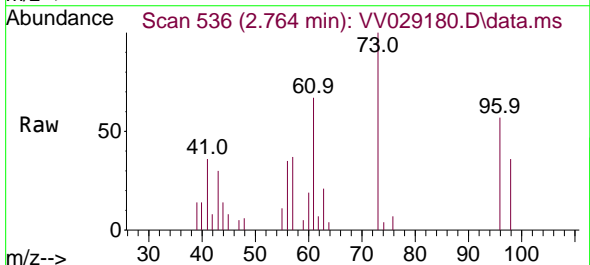
Instrument : MSVOA_V
 ClientSampleId : BHB42



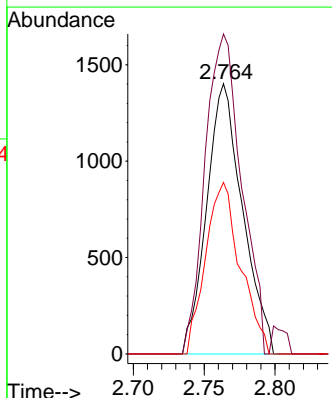
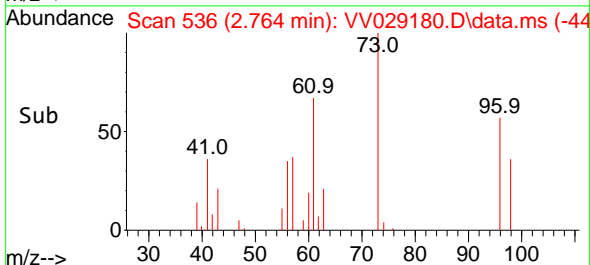
Tgt Ion: 73 Resp: 5494
 Ion Ratio Lower Upper
 73 100
 43 30.6 13.0 19.4#
 57 43.7 16.6 24.8#

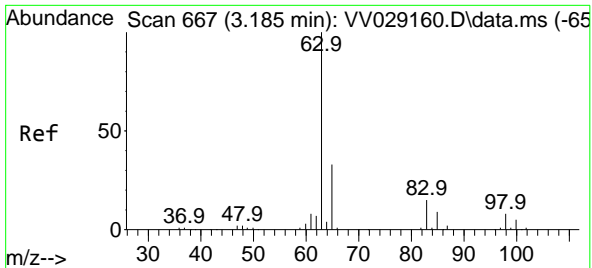


#18
 trans-1,2-Dichloroethene
 Concen: 0.106 ug/L
 RT: 2.764 min Scan# 536
 Delta R.T. 0.006 min
 Lab File: VV029180.D
 Acq: 19 Nov 2022 19:01



Tgt Ion: 96 Resp: 2478
 Ion Ratio Lower Upper
 96 100
 61 118.4 91.8 170.6
 98 63.5 46.4 86.2



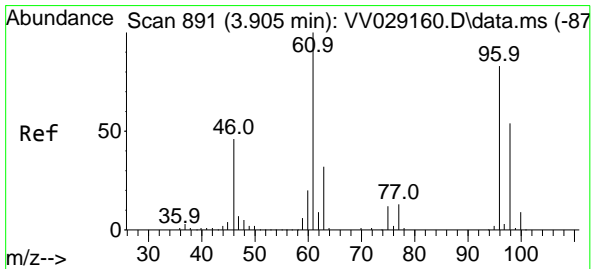
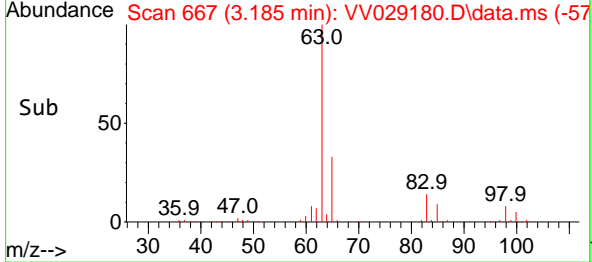
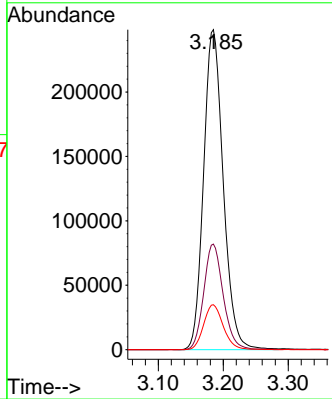
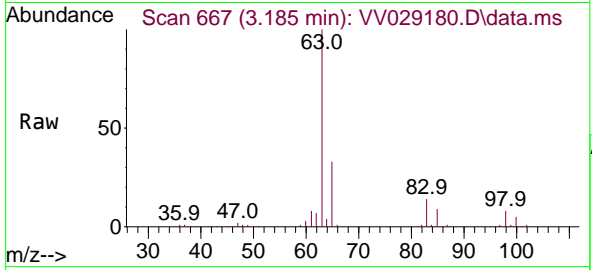


#19
 1,1-Dichloroethane
 Concen: 13.697 ug/L
 RT: 3.185 min Scan# 60
 Delta R.T. -0.000 min
 Lab File: VV029180.D
 Acq: 19 Nov 2022 19:01

Instrument : MSVOA_V
 ClientSampleId : BHB42

Tgt Ion: 63 Resp: 522639

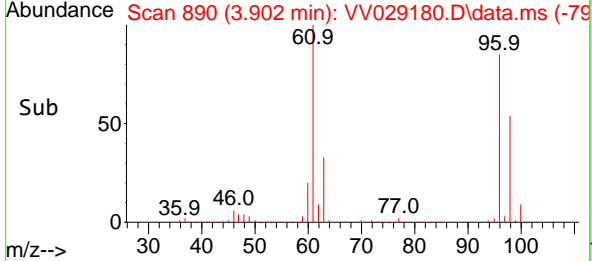
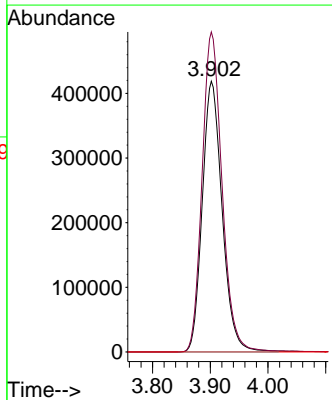
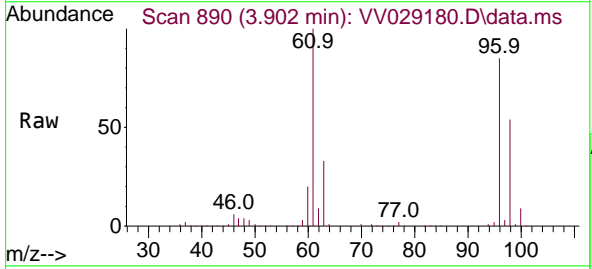
Ion	Ratio	Lower	Upper
63	100		
65	33.0	23.0	42.6
83	14.1	9.4	17.6

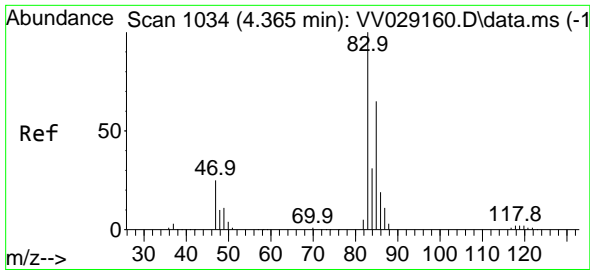


#22
 cis-1,2-Dichloroethene
 Concen: 42.214 ug/L
 RT: 3.902 min Scan# 890
 Delta R.T. -0.004 min
 Lab File: VV029180.D
 Acq: 19 Nov 2022 19:01

Tgt Ion: 96 Resp: 1001710

Ion	Ratio	Lower	Upper
96	100		
61	118.2	82.3	152.9
68	0.0	0.0	0.0

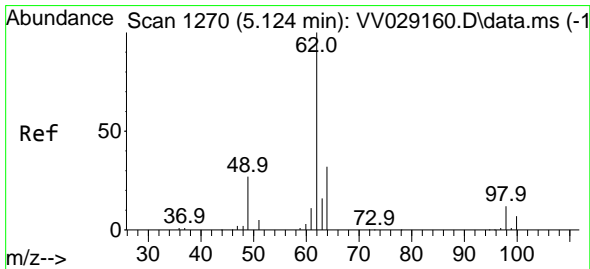
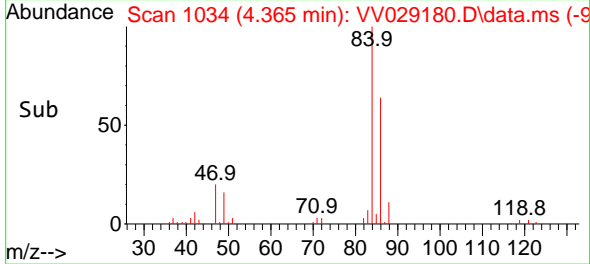
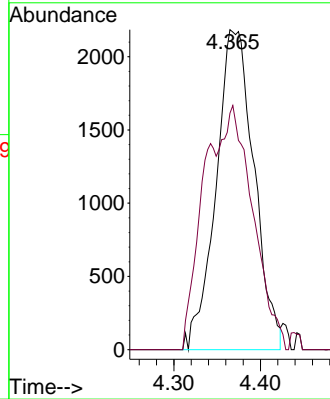
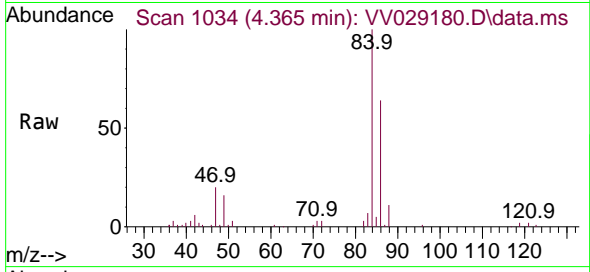




#25
 Chloroform
 Concen: 0.166 ug/L
 RT: 4.365 min Scan# 1034
 Delta R.T. -0.000 min
 Lab File: VV029180.D
 Acq: 19 Nov 2022 19:01

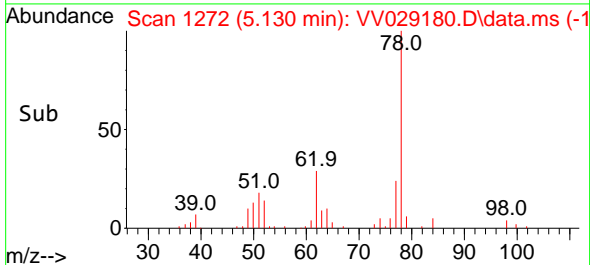
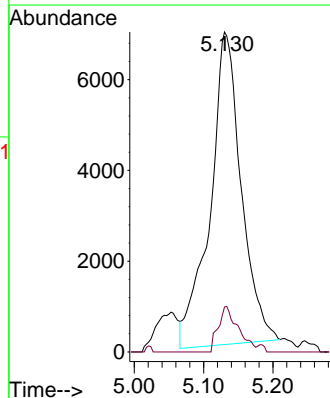
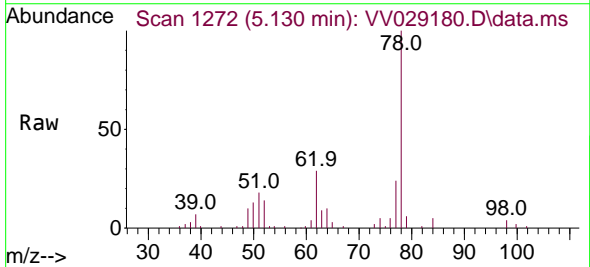
Instrument : MSVOA_V
 ClientSampleId : BHB42

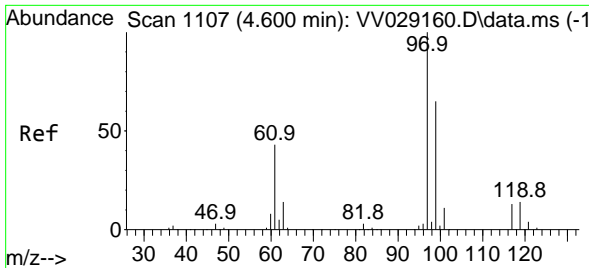
Tgt Ion: 83 Resp: 6639
 Ion Ratio Lower Upper
 83 100
 85 73.9 43.7 81.1



#27
 1,2-Dichloroethane
 Concen: 1.040 ug/L
 RT: 5.130 min Scan# 1272
 Delta R.T. 0.006 min
 Lab File: VV029180.D
 Acq: 19 Nov 2022 19:01

Tgt Ion: 62 Resp: 21424
 Ion Ratio Lower Upper
 62 100
 98 14.0 9.0 13.6#



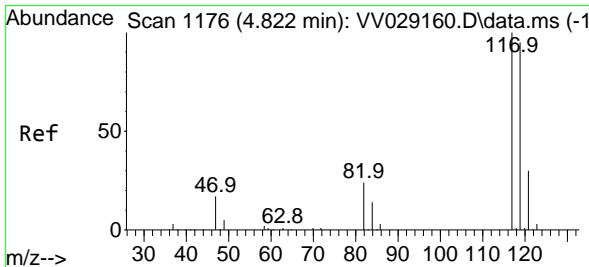
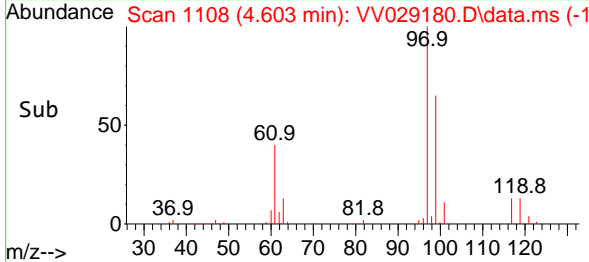
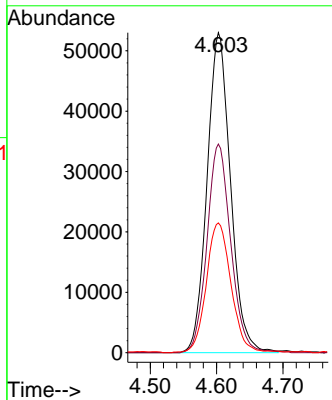
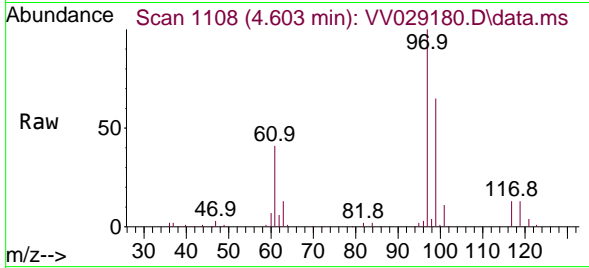


#29
 1,1,1-Trichloroethane
 Concen: 3.700 ug/L
 RT: 4.603 min Scan# 1108
 Delta R.T. 0.003 min
 Lab File: VV029180.D
 Acq: 19 Nov 2022 19:01

Instrument : MSVOA_V
 ClientSampleId : BHB42

Tgt Ion: 97 Resp: 130153

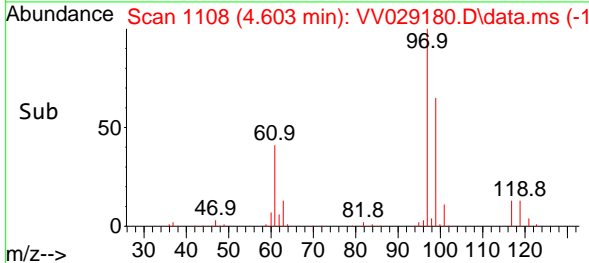
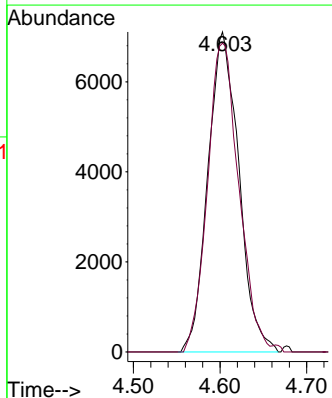
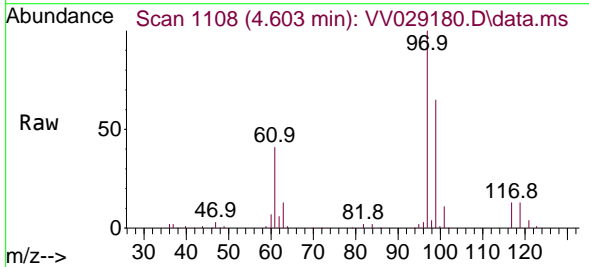
Ion	Ratio	Lower	Upper
97	100		
99	66.3	52.7	79.1
61	42.8	33.8	50.6

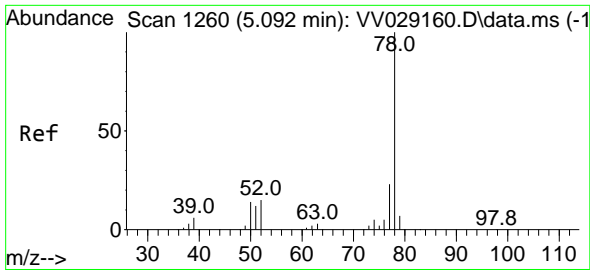


#31
 Carbon tetrachloride
 Concen: 0.582 ug/L
 RT: 4.603 min Scan# 1108
 Delta R.T. -0.219 min
 Lab File: VV029180.D
 Acq: 19 Nov 2022 19:01

Tgt Ion: 117 Resp: 17639

Ion	Ratio	Lower	Upper
117	100		
119	97.8	77.0	115.6

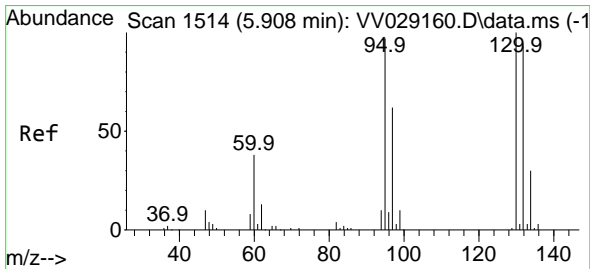
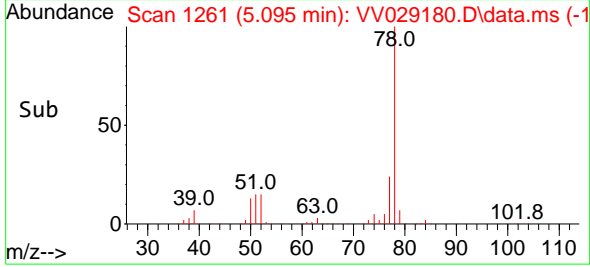
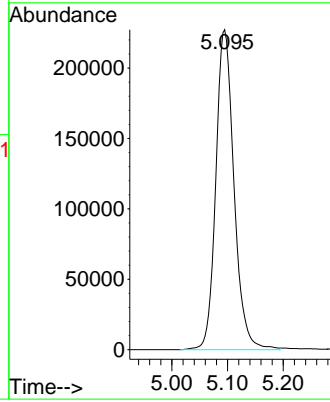
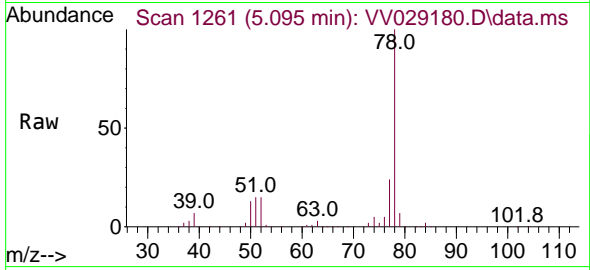




#33
Benzene
Concen: 5.624 ug/L
RT: 5.095 min Scan# 1260
Delta R.T. 0.003 min
Lab File: VV029180.D
Acq: 19 Nov 2022 19:01

Instrument : MSVOA_V
ClientSampleId : BHB42

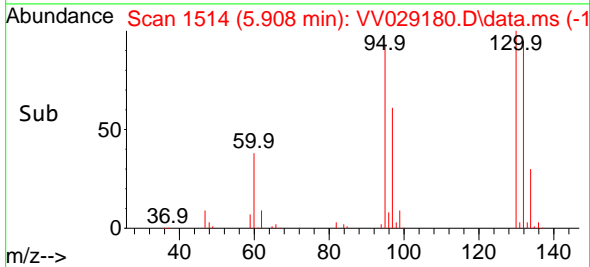
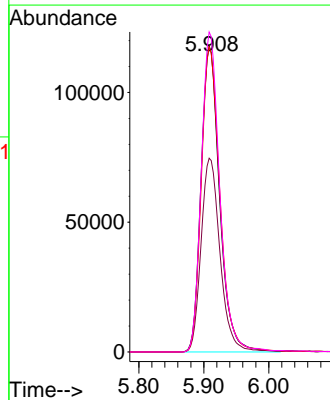
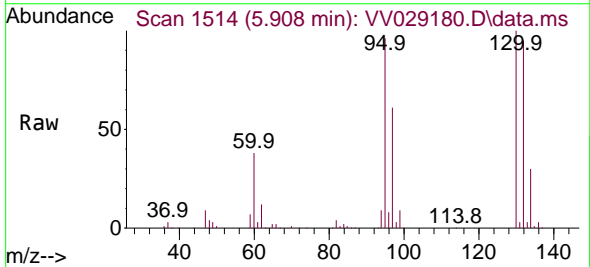
Tgt Ion: 78 Resp: 515166

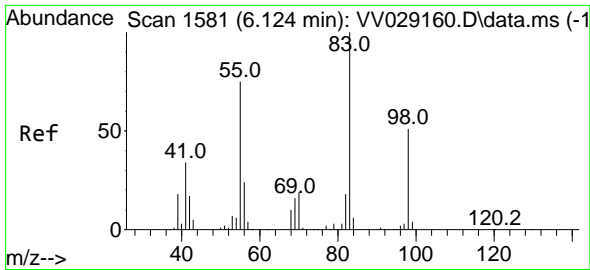


#34
Trichloroethene
Concen: 10.014 ug/L
RT: 5.908 min Scan# 1514
Delta R.T. -0.000 min
Lab File: VV029180.D
Acq: 19 Nov 2022 19:01

Tgt Ion: 95 Resp: 234856

Ion	Ratio	Lower	Upper
95	100		
97	63.4	45.6	84.8
132	99.7	69.1	128.3
130	104.6	74.9	139.1

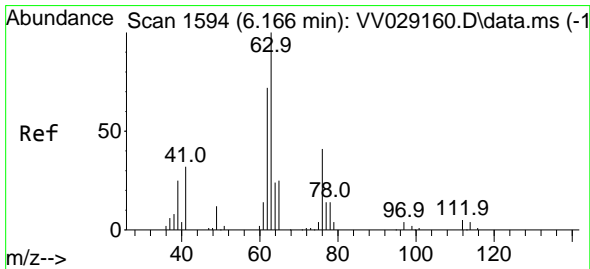
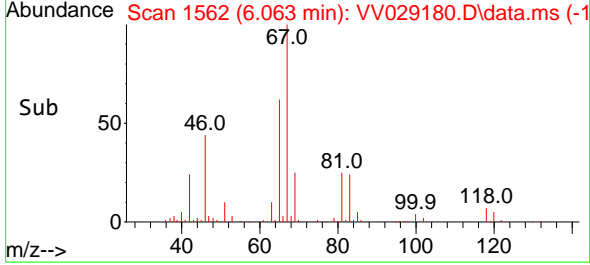
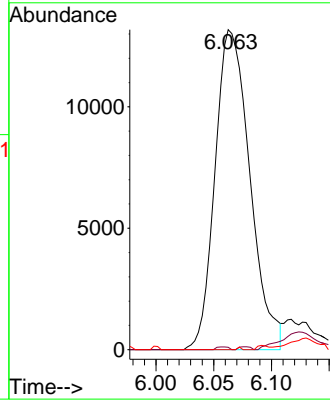
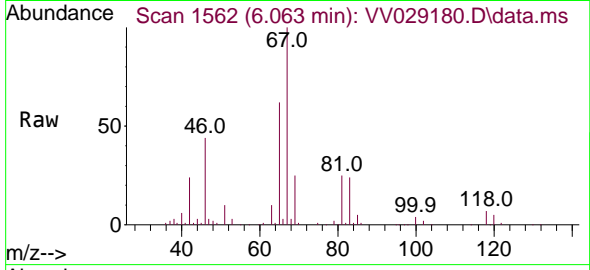




#35
 Methylcyclohexane
 Concen: 0.671 ug/L
 RT: 6.063 min Scan# 1562
 Delta R.T. -0.061 min
 Lab File: VV029180.D
 Acq: 19 Nov 2022 19:01

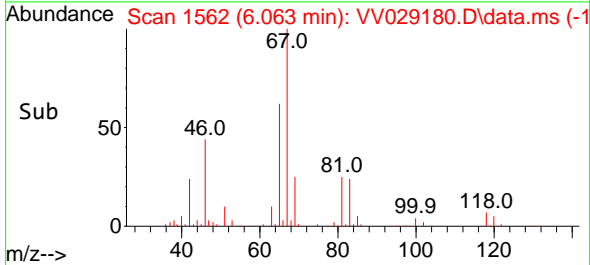
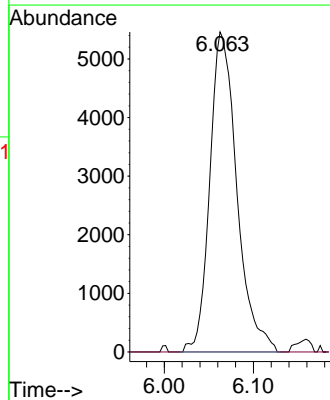
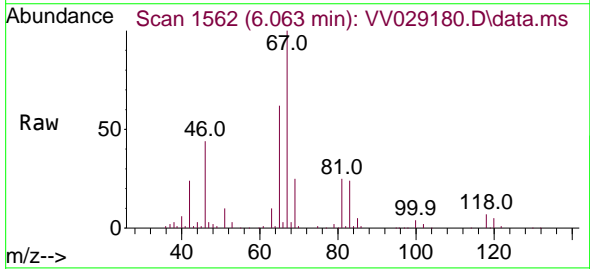
Instrument : MSVOA_V
 ClientSampleId : BHB42

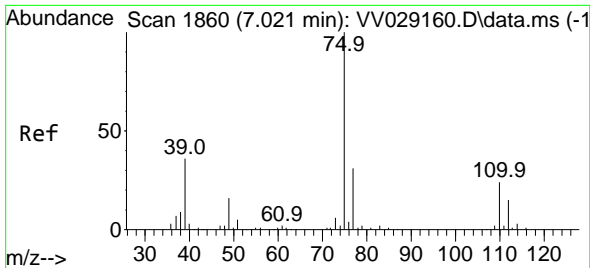
Tgt Ion: 83 Resp: 27668
 Ion Ratio Lower Upper
 83 100
 55 0.3 55.8 83.6#
 98 2.6 38.2 57.2#



#37
 1,2-Dichloropropane
 Concen: 0.545 ug/L
 RT: 6.063 min Scan# 1562
 Delta R.T. -0.103 min
 Lab File: VV029180.D
 Acq: 19 Nov 2022 19:01

Tgt Ion: 63 Resp: 11518
 Ion Ratio Lower Upper
 63 100
 112 0.0 4.0 6.0#

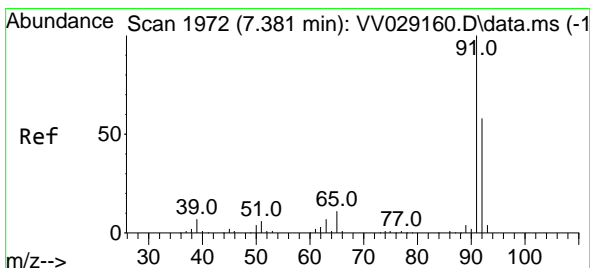
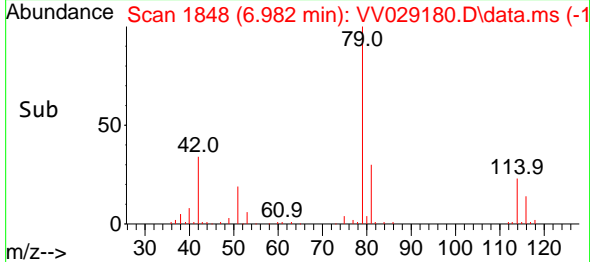
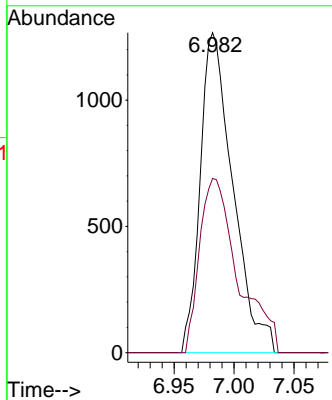
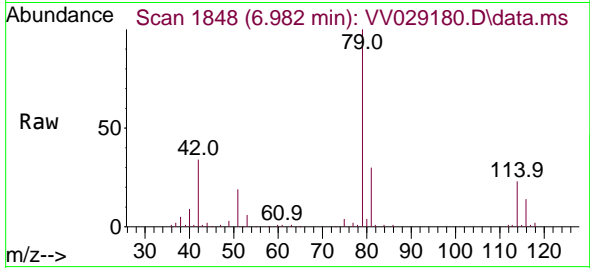




#39
 cis-1,3-Dichloropropene
 Concen: 0.081 ug/L
 RT: 6.982 min Scan# 1860
 Delta R.T. -0.039 min
 Lab File: VV029180.D
 Acq: 19 Nov 2022 19:01

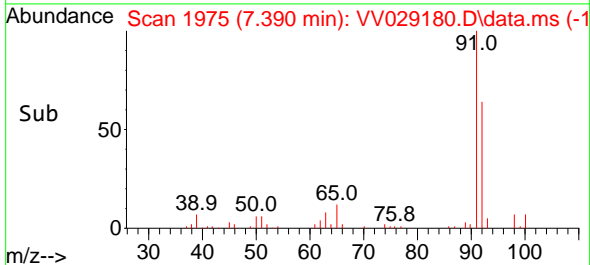
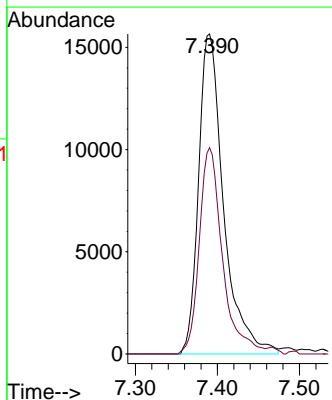
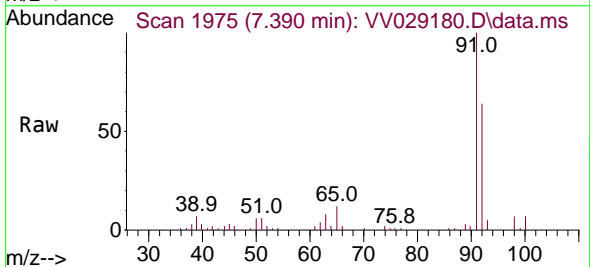
Instrument : MSVOA_V
 ClientSampleId : BHB42

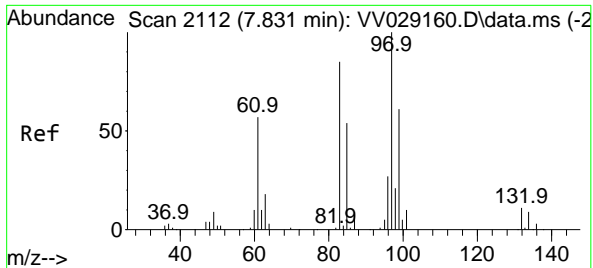
Tgt Ion: 75 Resp: 2399
 Ion Ratio Lower Upper
 75 100
 77 54.5 21.8 40.6#



#42
 Toluene
 Concen: 0.335 ug/L
 RT: 7.390 min Scan# 1975
 Delta R.T. 0.009 min
 Lab File: VV029180.D
 Acq: 19 Nov 2022 19:01

Tgt Ion: 91 Resp: 33117
 Ion Ratio Lower Upper
 91 100
 92 64.4 40.7 75.5

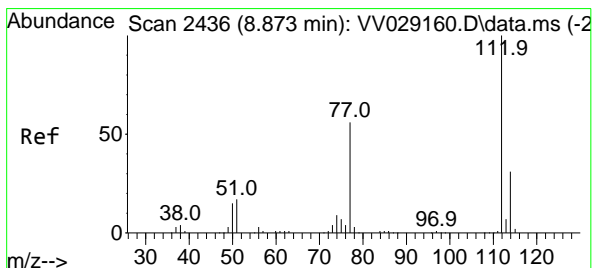
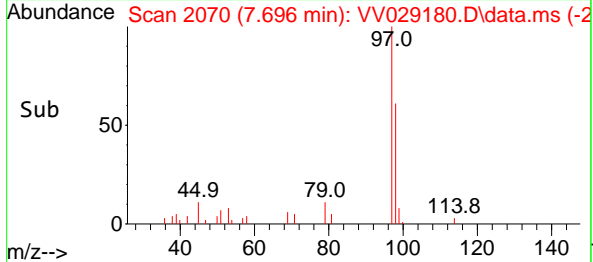
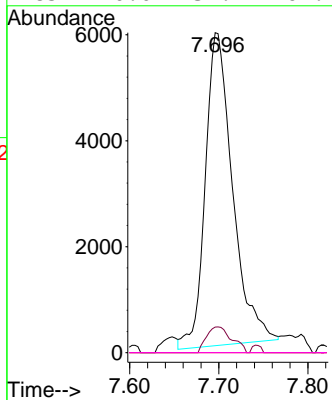
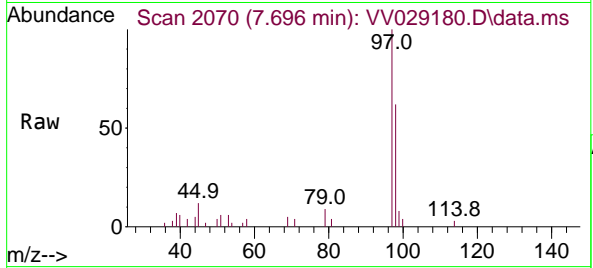




#45
 1,1,2-Trichloroethane
 Concen: 0.908 ug/L
 RT: 7.696 min Scan# 2070
 Delta R.T. -0.135 min
 Lab File: VV029180.D
 Acq: 19 Nov 2022 19:01

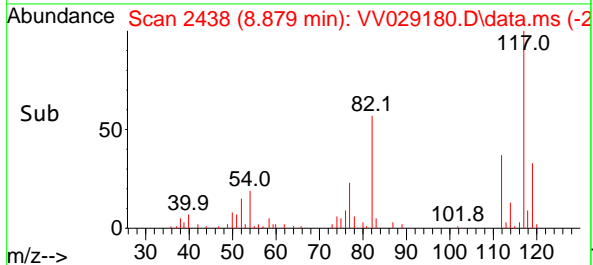
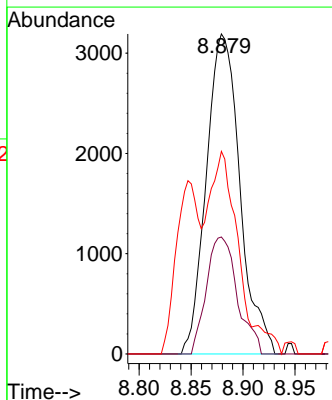
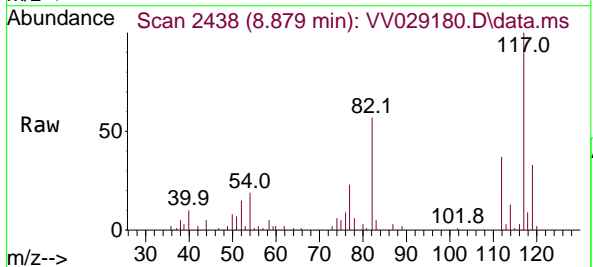
Instrument : MSVOA_V
 ClientSampleId : BHB42

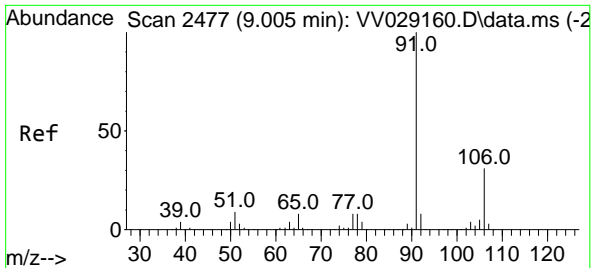
Tgt Ion	Resp	Lower	Upper
97	12562		
97	100		
99	8.0	41.5	77.1#
83	0.0	60.0	111.4#
85	0.0	37.4	69.4#



#51
 Chlorobenzene
 Concen: 0.117 ug/L
 RT: 8.879 min Scan# 2438
 Delta R.T. 0.006 min
 Lab File: VV029180.D
 Acq: 19 Nov 2022 19:01

Tgt Ion	Resp	Lower	Upper
112	7176		
112	100		
114	36.6	22.4	41.6
77	63.3	44.4	66.6

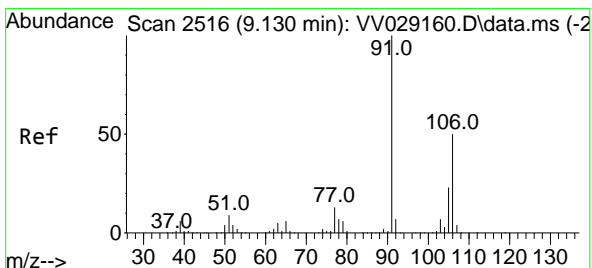
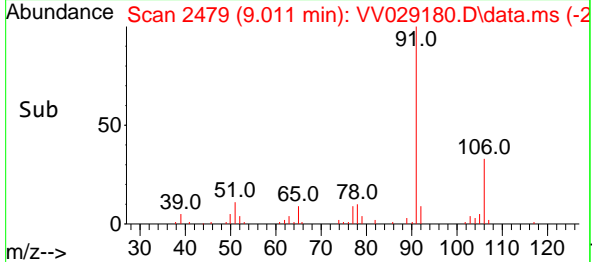
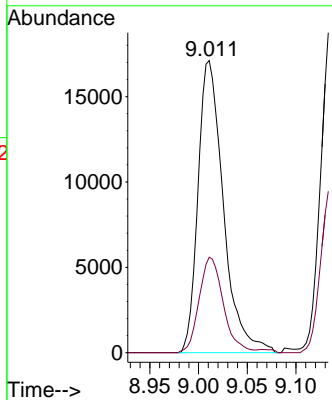
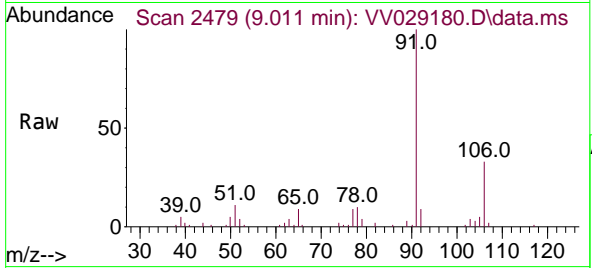




#52
 Ethylbenzene
 Concen: 0.301 ug/L
 RT: 9.011 min Scan# 2477
 Delta R.T. 0.006 min
 Lab File: VV029180.D
 Acq: 19 Nov 2022 19:01

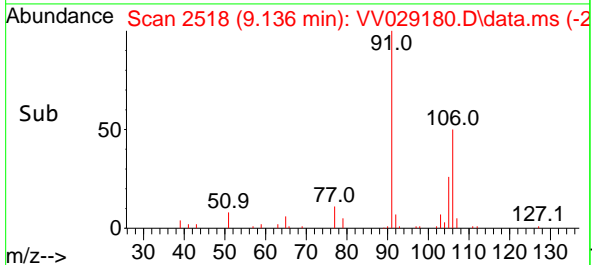
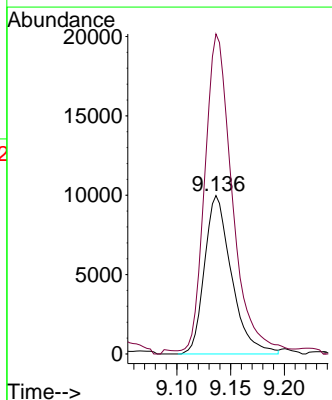
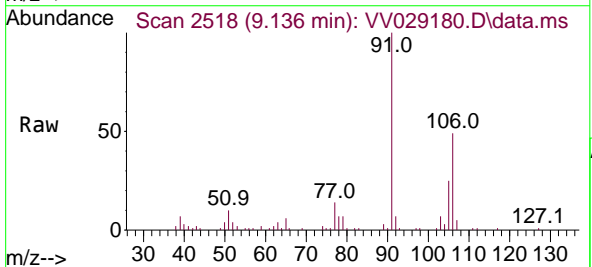
Instrument : MSVOA_V
 ClientSampleId : BHB42

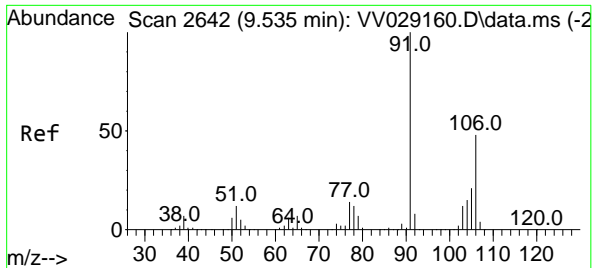
Tgt Ion: 91 Resp: 30965
 Ion Ratio Lower Upper
 91 100
 106 32.7 21.6 40.2



#53
 m,p-Xylene
 Concen: 0.425 ug/L
 RT: 9.136 min Scan# 2518
 Delta R.T. 0.006 min
 Lab File: VV029180.D
 Acq: 19 Nov 2022 19:01

Tgt Ion: 106 Resp: 17409
 Ion Ratio Lower Upper
 106 100
 91 202.0 139.1 258.3

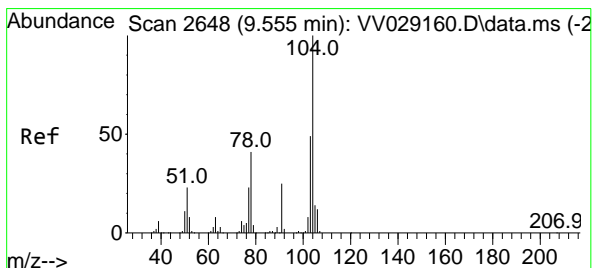
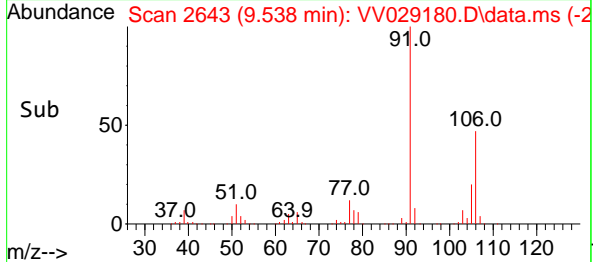
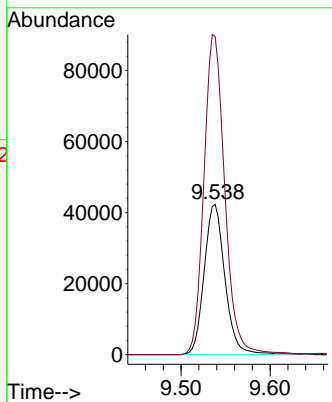
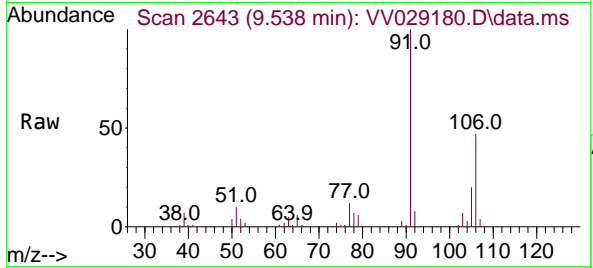




#54
 o-Xylene
 Concen: 1.753 ug/L
 RT: 9.538 min Scan# 2643
 Delta R.T. 0.003 min
 Lab File: VV029180.D
 Acq: 19 Nov 2022 19:01

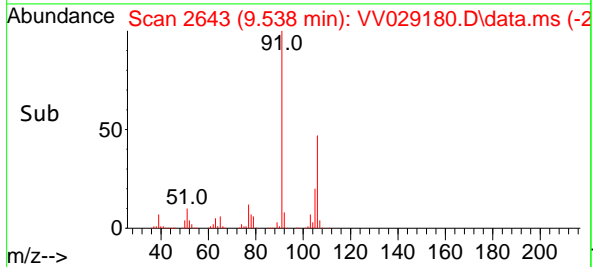
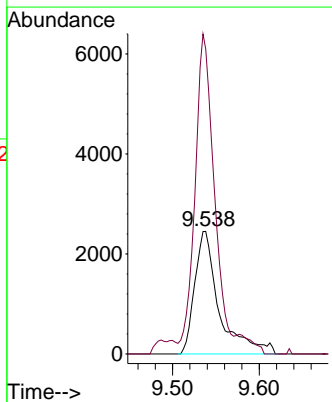
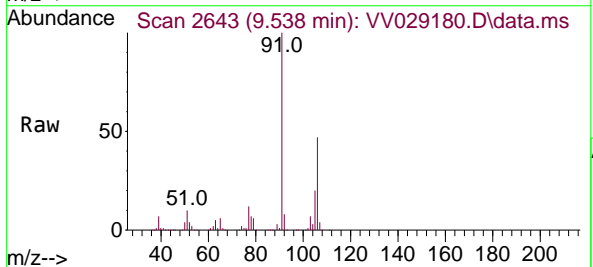
Instrument : MSVOA_V
 ClientSampleId : BHB42

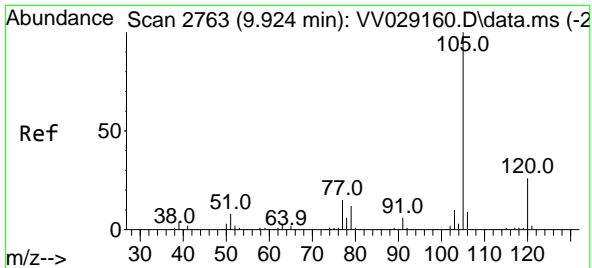
Tgt Ion:106 Resp: 68293
 Ion Ratio Lower Upper
 106 100
 91 211.7 145.7 270.7



#55
 Styrene
 Concen: 0.074 ug/L
 RT: 9.538 min Scan# 2643
 Delta R.T. -0.016 min
 Lab File: VV029180.D
 Acq: 19 Nov 2022 19:01

Tgt Ion:104 Resp: 4816
 Ion Ratio Lower Upper
 104 100
 78 248.7 30.1 55.9#



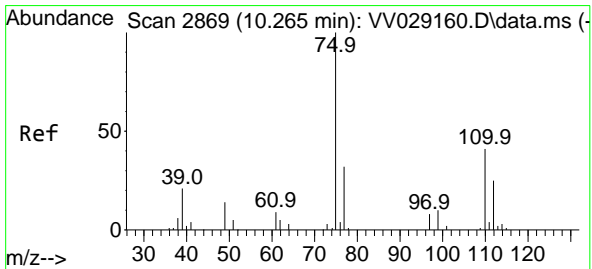
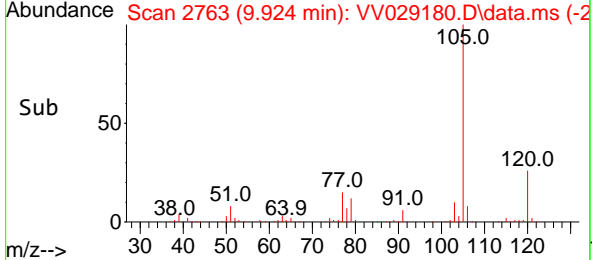
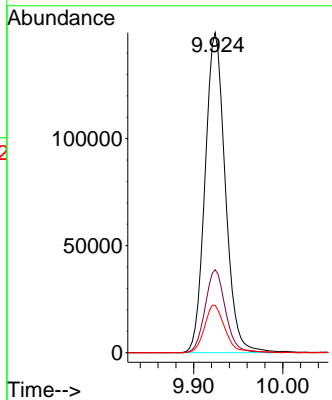
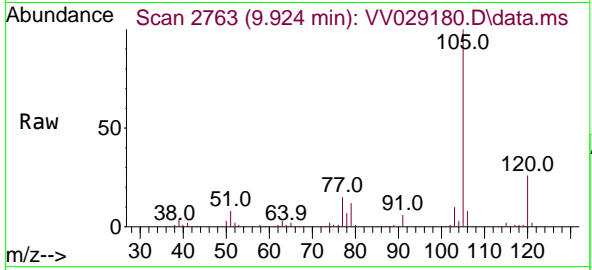


#60
 Isopropylbenzene
 Concen: 2.327 ug/L
 RT: 9.924 min Scan# 2763
 Delta R.T. -0.000 min
 Lab File: VV029180.D
 Acq: 19 Nov 2022 19:01

Instrument : MSVOA_V
 ClientSampleId : BHB42

Tgt Ion: 105 Resp: 235293

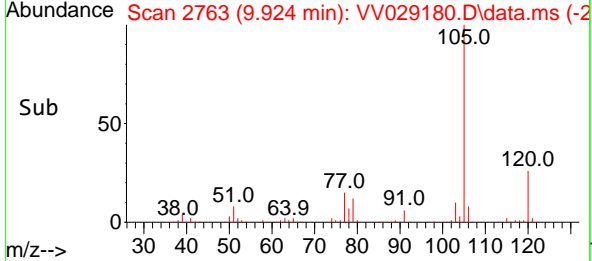
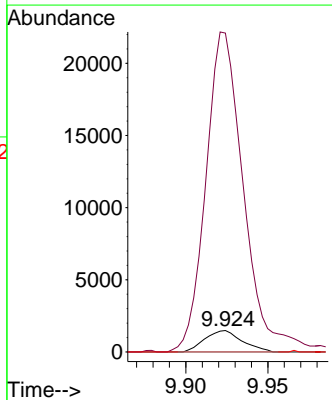
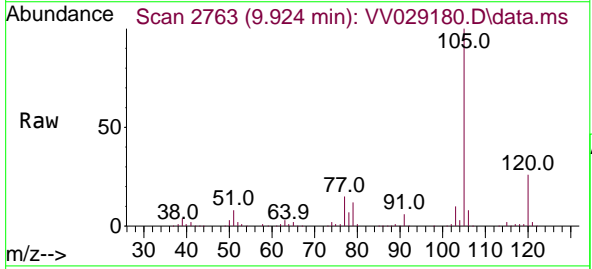
Ion	Ratio	Lower	Upper
105	100		
120	26.1	21.3	31.9
77	15.2	11.8	17.8

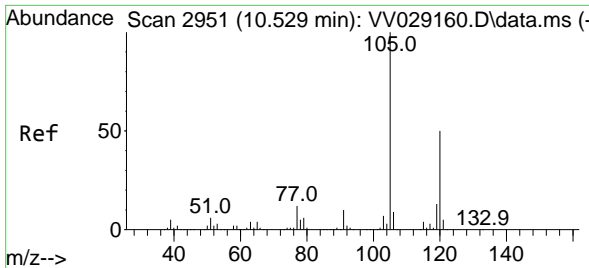


#61
 1,2,3-Trichloropropane
 Concen: 0.220 ug/L
 RT: 9.924 min Scan# 2763
 Delta R.T. -0.341 min
 Lab File: VV029180.D
 Acq: 19 Nov 2022 19:01

Tgt Ion: 75 Resp: 2345

Ion	Ratio	Lower	Upper
75	100		
77	1522.2	26.2	39.2#
110	0.0	32.6	48.8#

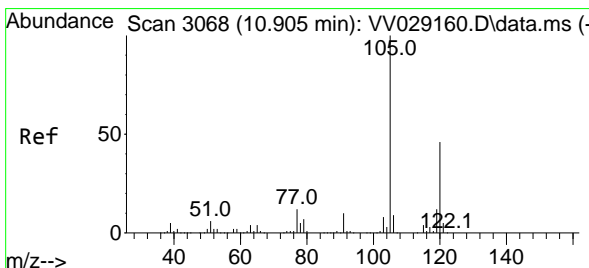
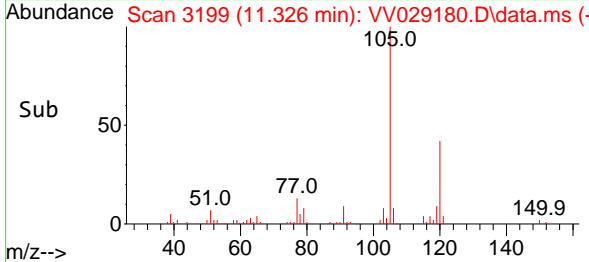
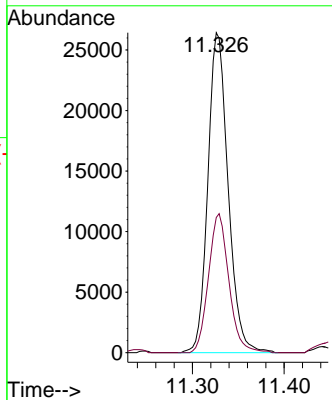
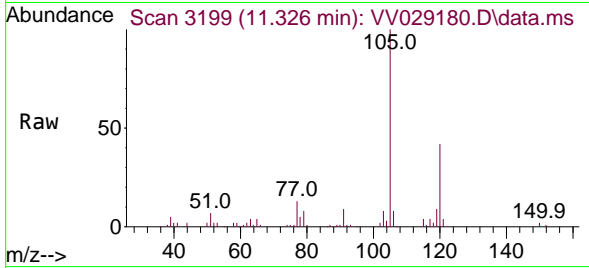




#62
 1,3,5-Trimethylbenzene
 Concen: 0.473 ug/L
 RT: 11.326 min Scan# 3199
 Delta R.T. 0.797 min
 Lab File: VV029180.D
 Acq: 19 Nov 2022 19:01

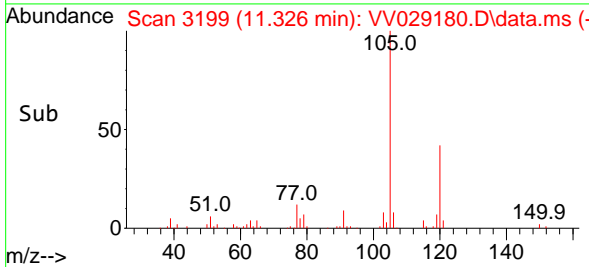
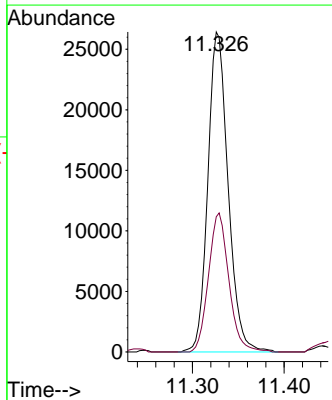
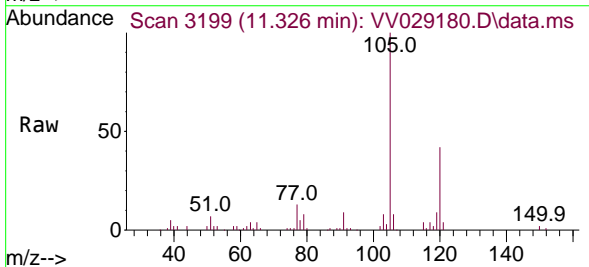
Instrument : MSVOA_V
 ClientSampleId : BHB42

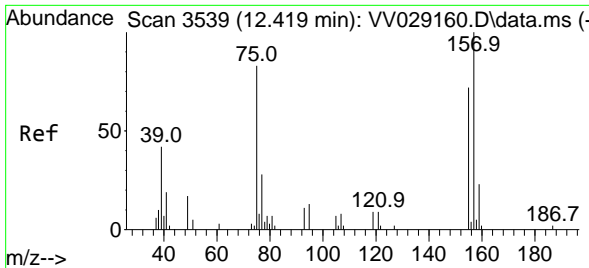
Tgt Ion:105 Resp: 40545
 Ion Ratio Lower Upper
 105 100
 120 43.8 39.9 59.9



#63
 1,2,4-Trimethylbenzene
 Concen: 0.473 ug/L
 RT: 11.326 min Scan# 3199
 Delta R.T. 0.421 min
 Lab File: VV029180.D
 Acq: 19 Nov 2022 19:01

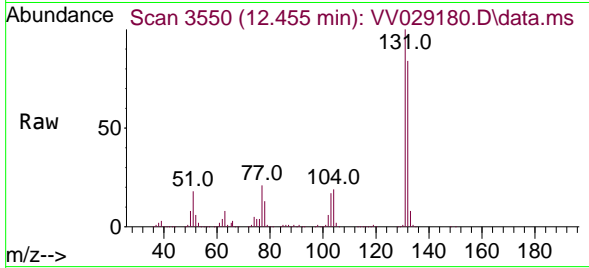
Tgt Ion:105 Resp: 40545
 Ion Ratio Lower Upper
 105 100
 120 43.8 37.8 56.8



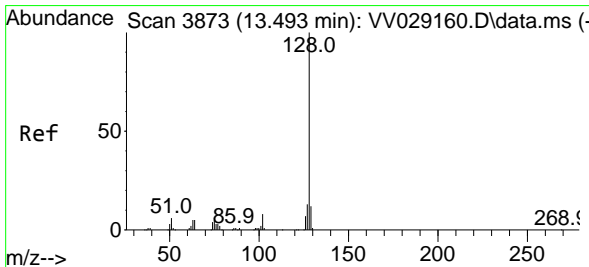
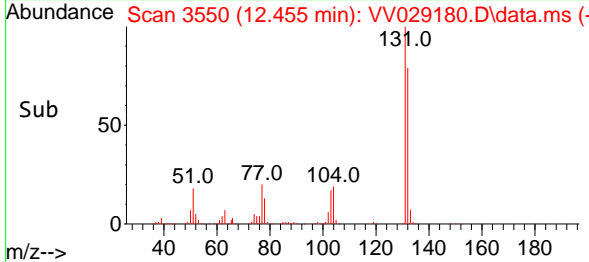
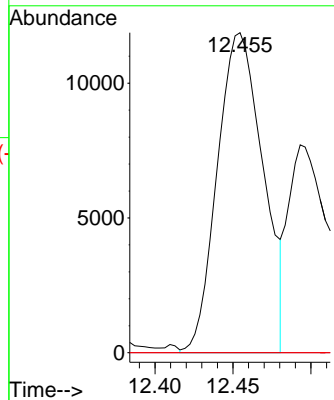


#68
 1,2-Dibromo-3-chloropropane
 Concen: 11.587 ug/L
 RT: 12.455 min Scan# 31
 Delta R.T. 0.035 min
 Lab File: VV029180.D
 Acq: 19 Nov 2022 19:01

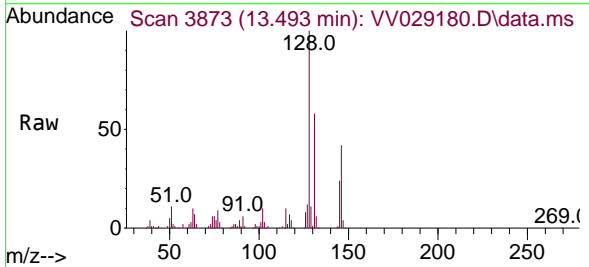
Instrument :
 MSVOA_V
 ClientSampleId :
 BHB42



Tgt Ion: 75 Resp: 24270
 Ion Ratio Lower Upper
 75 100
 155 0.0 64.8 97.2#
 157 0.0 86.3 129.5#



#71
 Naphthalene
 Concen: 2.706 ug/L
 RT: 13.493 min Scan# 3873
 Delta R.T. -0.000 min
 Lab File: VV029180.D
 Acq: 19 Nov 2022 19:01



Tgt Ion: 128 Resp: 96785
 Ion Ratio Lower Upper
 128 100
 129 12.3 8.8 13.2
 127 13.0 9.8 14.8

