

Data Path : Z:\voasrv\HPCHEM1\MSVOA_V\Data\VW111922\
 Data File : VW029175.D
 Acq On : 19 Nov 2022 16:59
 Operator : SY/MD
 Sample : N5694-01
 Misc : 25.0mL/MSVOA_V/WATER
 ALS Vial : 18 Sample Multiplier: 1

Instrument :
 MSVOA_V
 ClientSampleId :
 BHB37

Integration Parameters: rteint.p
 Integrator: RTE
 Smoothing : ON Filtering: 5
 Sampling : 1 Min Area: 3 % of largest Peak
 Start Thrs: 0.1 Max Peaks: 100
 Stop Thrs : 0 Peak Location: TOP

If leading or trailing edge < 100 prefer < Baseline drop else tangent >
 Peak separation: 5

Method : Z:\voasrv\HPCHEM1\MSVOA_V\Method\SFAMVTR111122WMA.M
 Title : TRACE VOA SFAM1.0

Signal : TIC: VW029175.D\data.ms

peak #	R.T. min	first scan	max scan	last scan	PK TY	peak height	corr. area	corr. % max.	% of total
1	1.262	58	69	70	rBV3	8880	14576	1.47%	0.177%
2	1.307	76	83	96	rVB	155986	166195	16.81%	2.014%
3	1.381	97	106	141	rBV	96191	325828	32.96%	3.949%
4	1.568	157	164	178	rVB	134321	161175	16.30%	1.953%
5	2.108	322	332	346	rVB	258645	378705	38.30%	4.590%
6	3.879	869	883	922	rBV	98460	314054	31.76%	3.806%
7	4.342	1008	1027	1058	rBV2	175330	448484	45.36%	5.435%
8	5.043	1227	1245	1291	rBV2	384291	988704	100.00%	11.982%
9	5.613	1411	1422	1453	rBV	294916	612260	61.93%	7.420%
10	6.066	1549	1563	1597	rBV	211883	452813	45.80%	5.488%
11	6.982	1837	1848	1872	rBV2	92309	184564	18.67%	2.237%
12	7.310	1938	1950	1970	rBV	457909	831683	84.12%	10.079%
13	7.622	2036	2047	2069	rBV	50671	98354	9.95%	1.192%
14	8.088	2179	2192	2232	rBV	354056	818479	82.78%	9.919%
15	8.246	2234	2241	2253	rVB4	16756	32801	3.32%	0.398%
16	8.847	2416	2428	2455	rBV	423659	723547	73.18%	8.769%
17	9.063	2487	2495	2505	rBV	8929	14201	1.44%	0.172%
18	10.210	2837	2852	2872	rBV	153068	250267	25.31%	3.033%
19	11.149	3135	3144	3160	rBV6	11535	22809	2.31%	0.276%
20	11.243	3162	3173	3194	rBV	396483	649866	65.73%	7.876%
21	11.529	3253	3262	3276	rBV4	10999	21465	2.17%	0.260%
22	11.616	3277	3289	3315	rVB	426344	681940	68.97%	8.265%
23	12.339	3504	3514	3530	rBV2	33758	58622	5.93%	0.710%

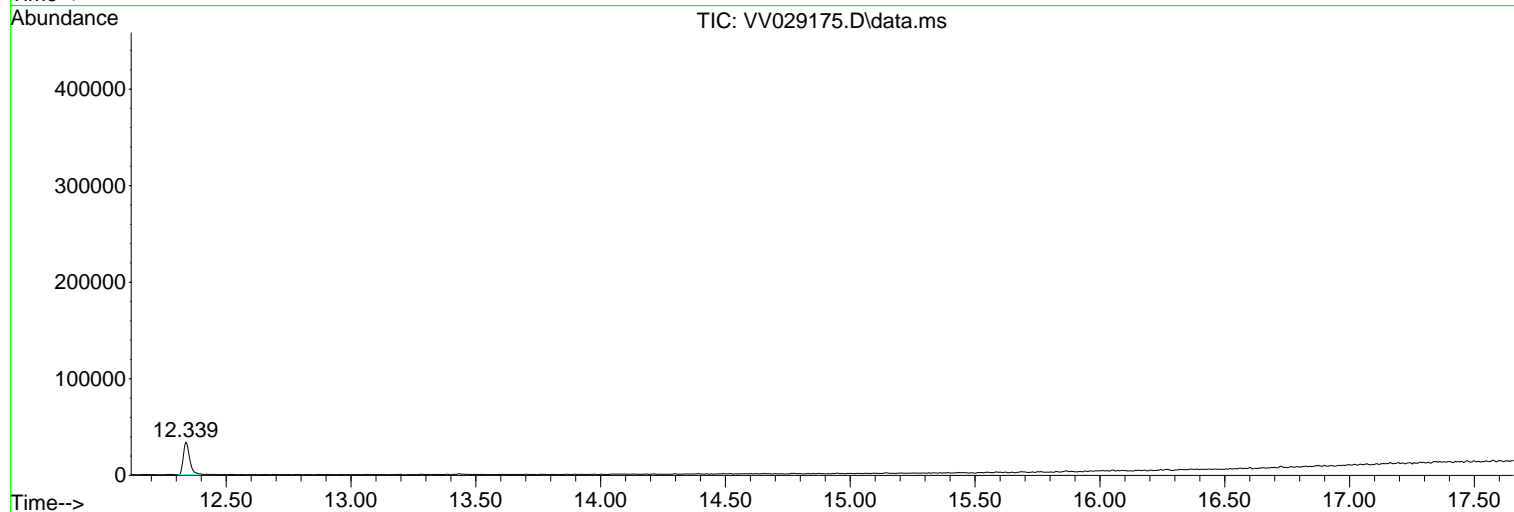
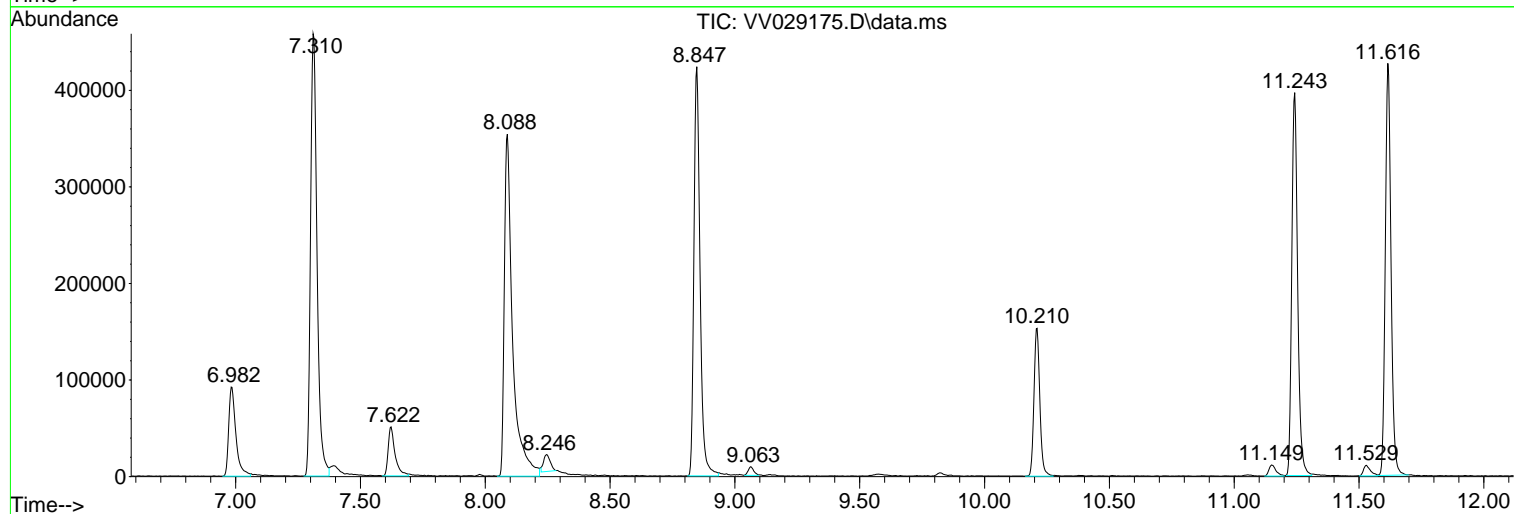
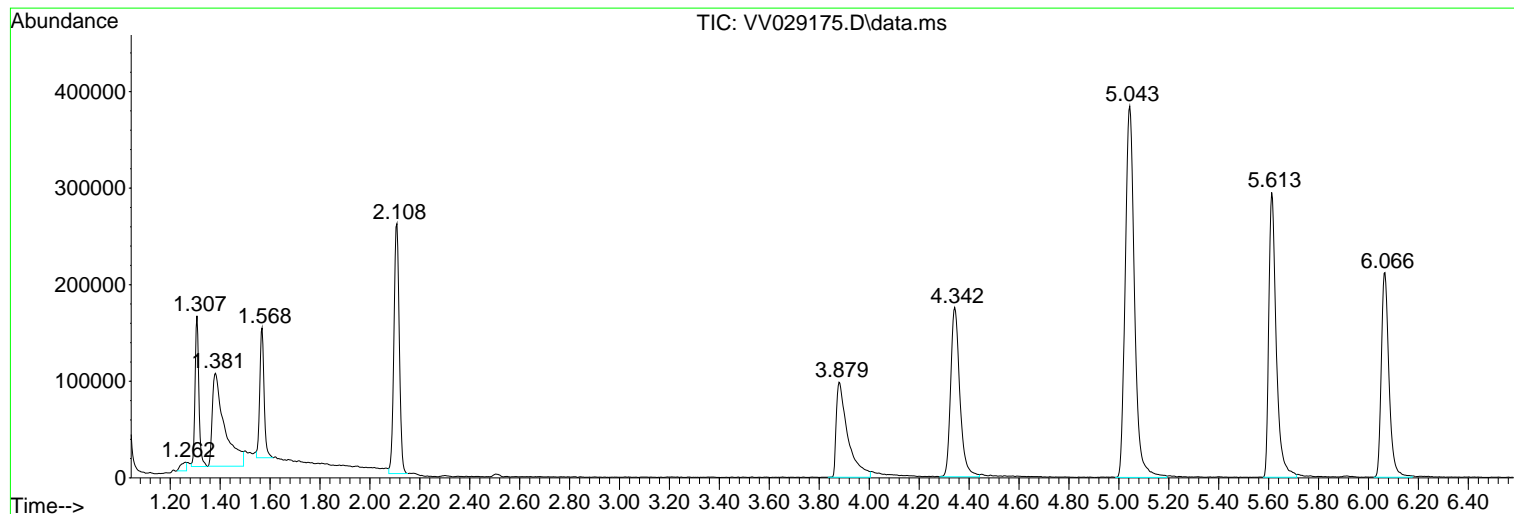
Sum of corrected areas: 8251392

Data Path : Z:\voasrv\HPCHEM1\MSVOA_V\Data\VV111922\
Data File : VV029175.D
Acq On : 19 Nov 2022 16:59
Operator : SY/MD
Sample : N5694-01
Misc : 25.0mL/MSVOA_V/WATER
ALS Vial : 18 Sample Multiplier: 1

Instrument :
MSVOA_V
ClientSampleId :
BHB37

Quant Method : Z:\voasrv\HPCHEM1\MSVOA_V\Method\SFAMVTR111122WMA.M
Quant Title : TRACE VOA SFAM1.0

TIC Library : C:\Database\NIST20.L
TIC Integration Parameters: LSCINT.P



Data Path : Z:\voasrv\HPCHEM1\MSVOA_V\Data\VV111922\
 Data File : VV029175.D
 Acq On : 19 Nov 2022 16:59
 Operator : SY/MD
 Sample : N5694-01
 Misc : 25.0mL/MSVOA_V/WATER
 ALS Vial : 18 Sample Multiplier: 1

Instrument :
 MSVOA_V
 ClientSampleId :
 BHB37

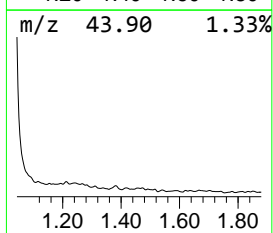
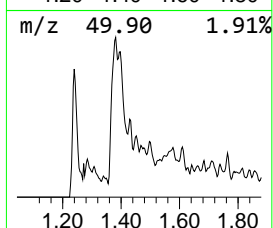
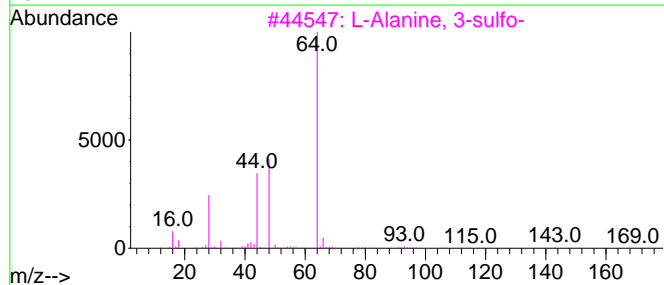
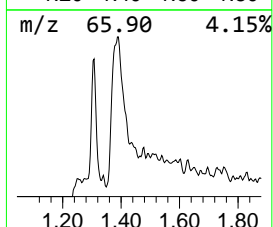
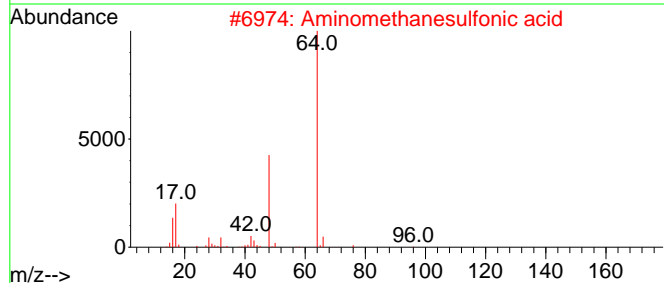
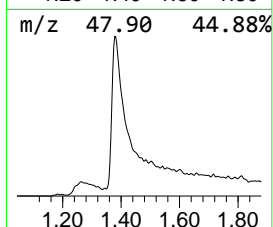
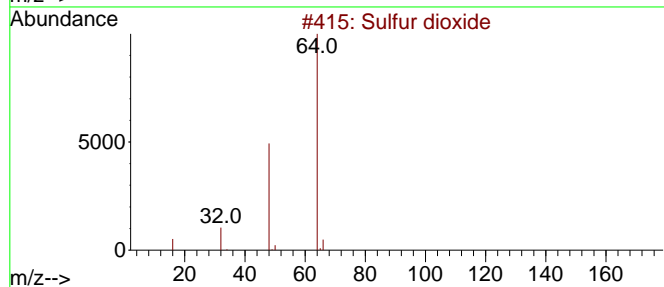
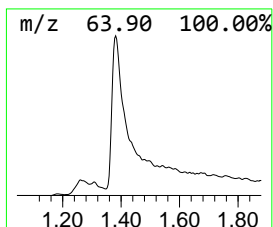
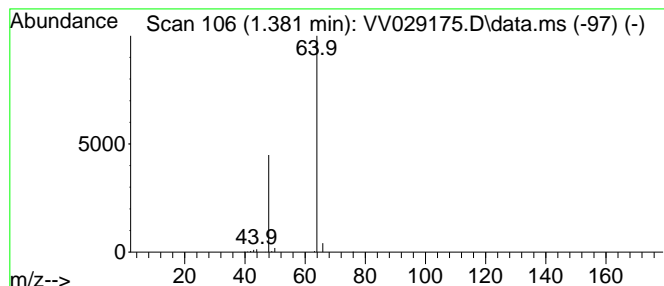
Quant Method : Z:\voasrv\HPCHEM1\MSVOA_V\Method\SFAMVTR111122WMA.M
 Quant Title : TRACE VOA SFAM1.0

TIC Library : C:\Database\NIST20.L
 TIC Integration Parameters: LSCINT.P

 Peak Number 1 Sulfur dioxide Concentration Rank 1

R.T.	EstConc	Area	Relative to ISTD	R.T.
1.381	2.66 ug/L	325828	1,4-Difluorobenzene	5.613

Hit#	of 5	Tentative ID	MW	MolForm	CAS#	Qual
1		Sulfur dioxide	64	O2S	007446-09-5	90
2		Aminomethanesulfonic acid	111	CH5NO3S	013881-91-9	64
3		L-Alanine, 3-sulfo-	169	C3H7NO5S	000498-40-8	9
4		Ethene, 1,1-difluoro-	64	C2H2F2	000075-38-7	5
5		Ethyl Chloride	64	C2H5Cl	000075-00-3	4



Data Path : Z:\voasrv\HPCHEM1\MSVOA_V\Data\VW111922\
Data File : VW029175.D
Acq On : 19 Nov 2022 16:59
Operator : SY/MD
Sample : N5694-01
Misc : 25.0mL/MSVOA_V/WATER
ALS Vial : 18 Sample Multiplier: 1

Instrument :
MSVOA_V
ClientSampleId :
BHB37

Quant Method : Z:\voasrv\HPCHEM1\MSVOA_V\Method\SFAMVTR111122WMA.M
Quant Title : TRACE VOA SFAM1.0

TIC Library : C:\Database\NIST0.L
TIC Integration Parameters: LSCINT.P

TIC Top Hit name	RT	EstConc	Units	Response	--Internal Standard--			
					#	RT	Resp	Conc
Sulfur dioxide	1.381	2.7	ug/L	325828	1	5.613	612260	5.0