

Data Path : Z:\VOASRV\HPCHEM1\MSVOA V\DATA\VV112119\
 Data File : VV013716.D
 Acq On : 21 Nov 2019 16:18
 Operator : SY/MD
 Sample : K5941-09 10X
 Misc : 25.0mL/MSVOA V/WATER
 ALS Vial : 16 Sample Multiplier: 1

Instrument :
 MSVOA_V
 ClientSampled :
 B0AC1

Integration Parameters: rteint.p
 Integrator: RTE
 Smoothing : ON Filtering: 5
 Sampling : 1 Min Area: 3 % of largest Peak
 Start Thrs: 0.1 Max Peaks: 100
 Stop Thrs : 0 Peak Location: TOP

If leading or trailing edge < 100 prefer < Baseline drop else tangent >
 Peak separation: 5

Method : Z:\VOASRV\HPCHEM1\MSVOA_V\METHOD\SOMVTR111519WMA.M
 Title : TRACE VOA SOM01.0

Signal : TIC

peak #	R.T. min	first scan	max scan	last scan	PK TY	peak height	corr. area	corr. % max.	% of total
1	1.270	46	56	58	rBV2	11513	20122	1.38%	0.163%
2	1.315	63	70	84	rVB	208548	224049	15.37%	1.818%
3	1.579	145	152	164	rVB	185322	206091	14.13%	1.672%
4	2.126	312	322	338	rVB2	365222	547864	37.57%	4.445%
5	2.534	440	449	458	rBV4	9599	16435	1.13%	0.133%
6	3.229	651	665	679	rBV3	24753	55087	3.78%	0.447%
7	3.962	879	893	939	rBV	125485	601568	41.26%	4.881%
8	4.399	1008	1029	1052	rBV2	259439	639072	43.83%	5.185%
9	5.093	1226	1245	1276	rBV2	597303	1458135	100.00%	11.830%
10	5.659	1406	1421	1443	rBV2	363623	743495	50.99%	6.032%
11	5.955	1497	1513	1532	rBV	432343	839799	57.59%	6.813%
12	6.113	1547	1562	1586	rBV	336595	686128	47.06%	5.567%
13	7.026	1834	1846	1864	rBV	155404	286173	19.63%	2.322%
14	7.357	1936	1949	1966	rBV	681736	1182733	81.11%	9.596%
15	7.659	2033	2043	2060	rBV2	96164	166902	11.45%	1.354%
16	8.138	2181	2192	2229	rBV2	584287	1406336	96.45%	11.410%
17	8.891	2412	2426	2448	rBV	553339	909712	62.39%	7.381%
18	10.257	2837	2851	2865	rBV	262899	419252	28.75%	3.401%
19	11.289	3159	3172	3195	rBV	543437	842279	57.76%	6.834%
20	11.666	3273	3289	3305	rBV	679064	1074430	73.69%	8.717%

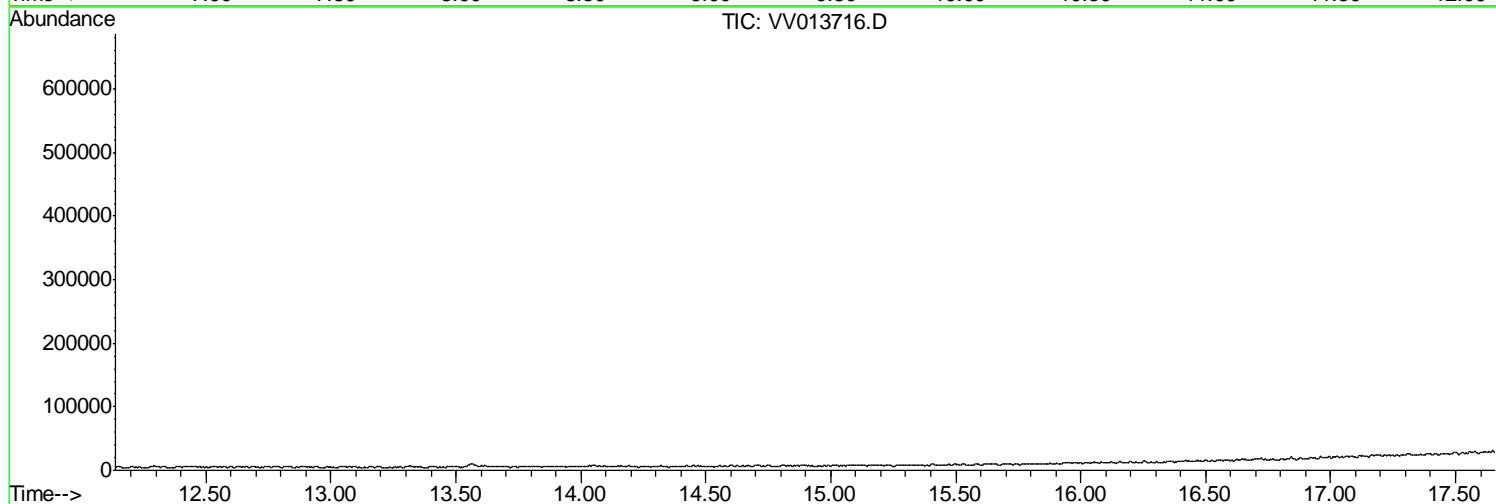
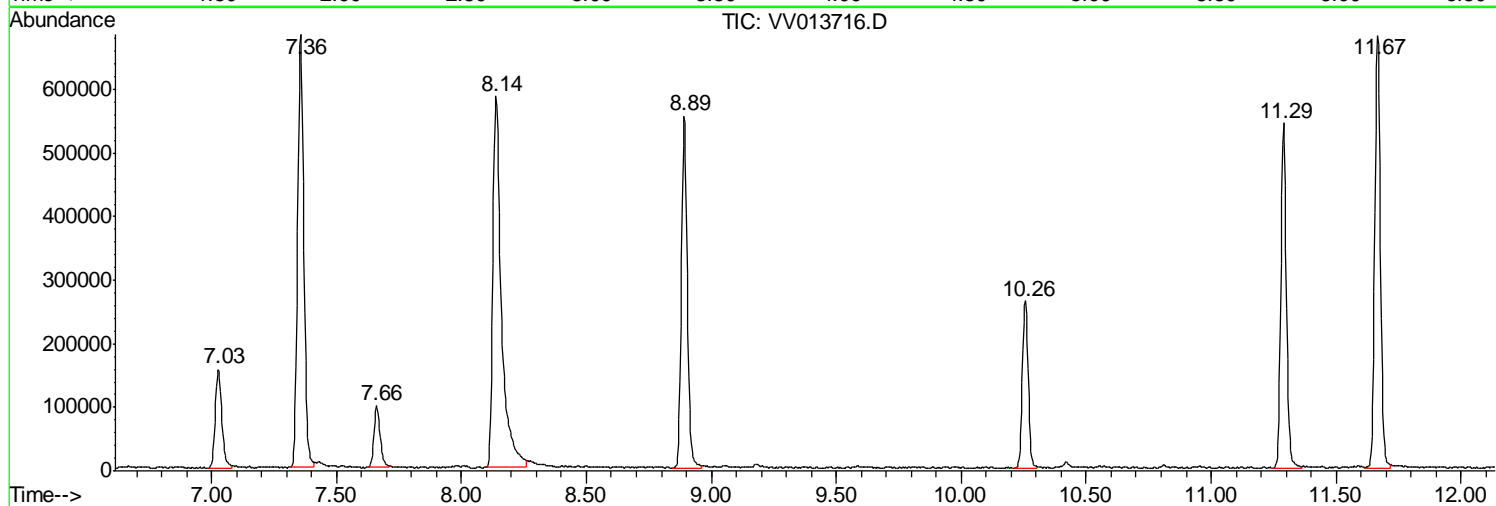
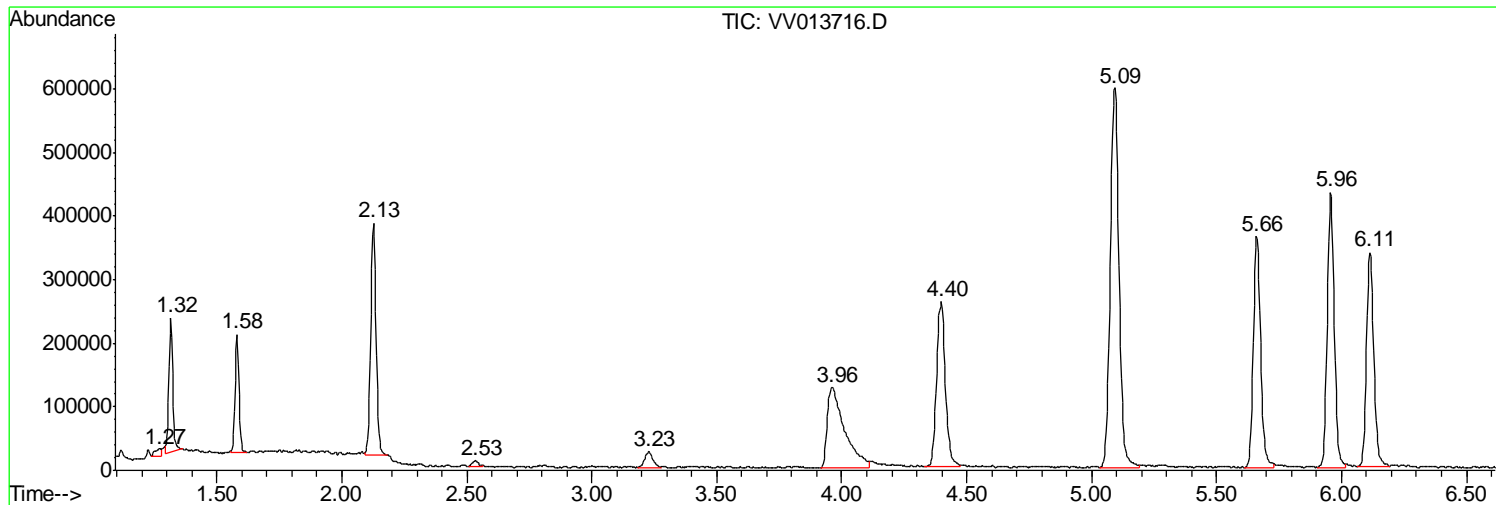
Sum of corrected areas: 12325662

Data Path : Z:\VOASRV\HPCHEM1\MSVOA V\DATA\VV112119\
Data File : VV013716.D
Acq On : 21 Nov 2019 16:18
Operator : SY/MD
Sample : K5941-09 10X
Misc : 25.0mL/MSVOA V/WATER
ALS Vial : 16 Sample Multiplier: 1

Instrument :
MSVOA_V
ClientSampled :
B0AC1

Quant Method : Z:\VOASRV\HPCHEM1\MSVOA_V\METHOD\SOMVTR111519WMA.M
Quant Title : TRACE VOA SOM01.0

TIC Library : C:\DATABASE\NIST11.L
TIC Integration Parameters: LSCINT.P



Data Path : Z:\VOASRV\HPCHEM1\MSVOA_V\DATA\VV112119\
Data File : VV013716.D
Acq On : 21 Nov 2019 16:18
Operator : SY/MD
Sample : K5941-09 10X
Misc : 25.0mL/MSVOA_V/WATER
ALS Vial : 16 Sample Multiplier: 1

Instrument :
MSVOA_V
ClientSampleId :
B0AC1

Quant Method : Z:\VOASRV\HPCHEM1\MSVOA_V\METHOD\SOMVTR111519WMA.M
Quant Title : TRACE VOA SOM01.0

TIC Library : C:\DATABASE\NIST11.L
TIC Integration Parameters: LSCINT.P

No Library Search Compounds Detected

Data Path : Z:\VOASRV\HPCHEM1\MSVOA_V\DATA\VV112119\
Data File : VV013716.D
Acq On : 21 Nov 2019 16:18
Operator : SY/MD
Sample : K5941-09 10X
Misc : 25.0mL/MSVOA_V/WATER
ALS Vial : 16 Sample Multiplier: 1

Instrument :
MSVOA_V
ClientSampleId :
B0AC1

Quant Method : Z:\VOASRV\HPCHEM1\MSVOA_V\METHOD\SOMVTR111519WMA.M
Quant Title : TRACE VOA SOM01.0

TIC Library : C:\DATABASE\NIST11.L
TIC Integration Parameters: LSCINT.P

TIC Top Hit name	RT	EstConc	Units	Response	--Internal Standard--			
					#	RT	Resp	Conc
