

Data Path : Z:\voasrv\HPCHEM1\MSVOA_V\DATA\VV112124\
 Data File : VV038231.D
 Acq On : 21 Nov 2024 11:09
 Operator : SY/MD
 Sample : P4882-02DL 5X
 Misc : 25mL/MSVOA_V/WATER
 ALS Vial : 6 Sample Multiplier: 1

Instrument :
 MSVOA_V
 ClientSampleId :

Quant Time: Nov 22 01:42:56 2024
 Quant Method : Z:\voasrv\HPCHEM1\MSVOA_V\Method\SFAMVTR111924WMA.M
 Quant Title : TRACE VOA SFAM1.0
 QLast Update : Fri Nov 22 01:41:27 2024
 Response via : Initial Calibration

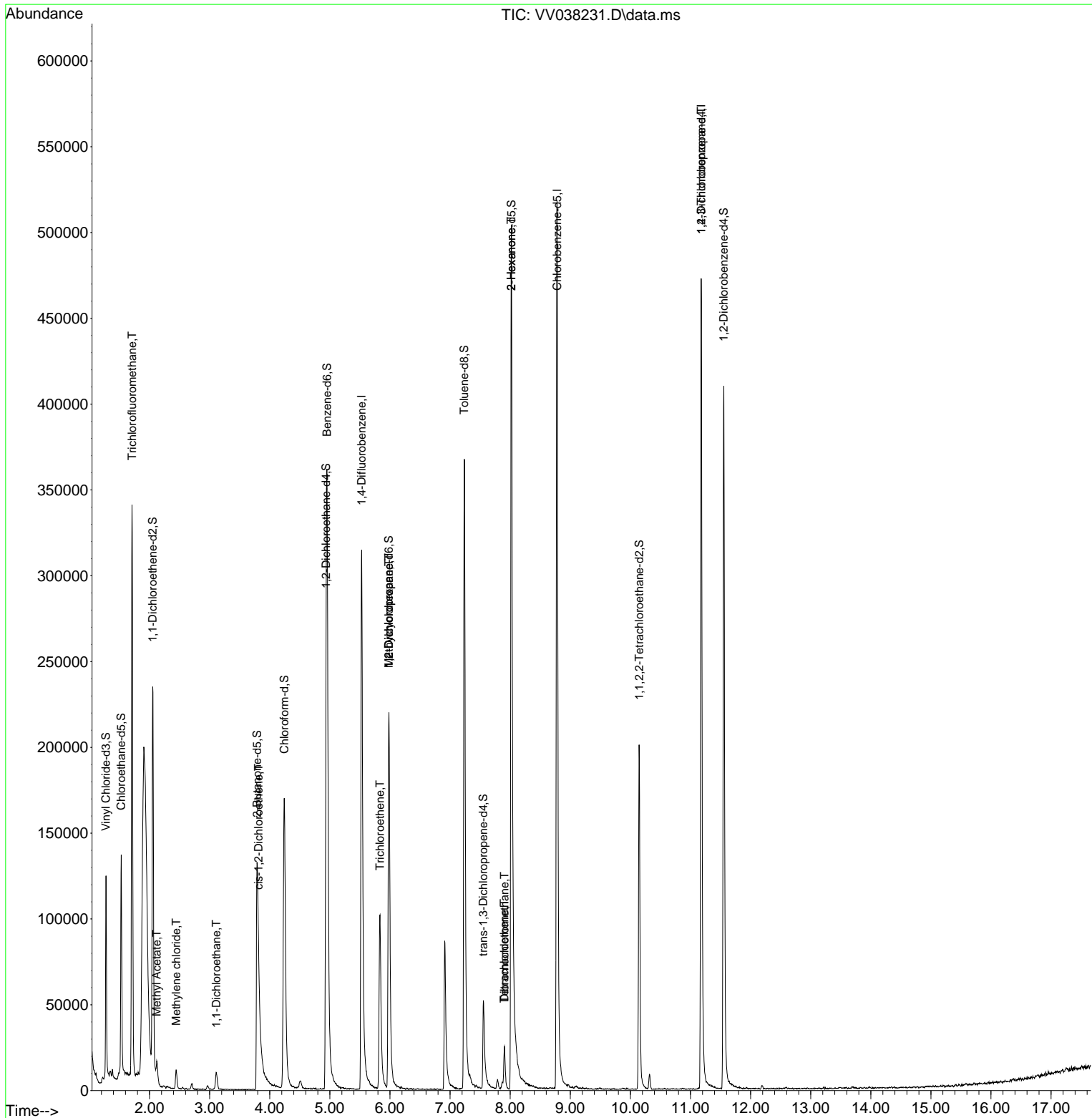
Compound	R.T.	QIon	Response	Conc	Units	Dev(Min)
Internal Standards						
1) 1,4-Difluorobenzene	5.529	114	298037	5.000	ug/L	0.00
28) Chlorobenzene-d5	8.779	117	317158	5.000	ug/L	0.00
58) 1,4-Dichlorobenzene-d4	11.178	152	136960	5.000	ug/L	0.00
System Monitoring Compounds						
4) Vinyl Chloride-d3	1.275	65	77354	3.386	ug/L	0.00
Spiked Amount	5.000	Range 40 - 130	Recovery	=	67.800%	
7) Chloroethane-d5	1.529	69	80195	4.340	ug/L	0.00
Spiked Amount	5.000	Range 65 - 130	Recovery	=	86.800%	
11) 1,1-Dichloroethene-d2	2.053	65	37173	3.781	ug/L	0.00
Spiked Amount	5.000	Range 60 - 125	Recovery	=	75.600%	
20) 2-Butanone-d5	3.789	46	228087	49.911	ug/L	0.00
Spiked Amount	50.000	Range 40 - 130	Recovery	=	99.820%	
24) Chloroform-d	4.243	84	191209	4.313	ug/L	0.00
Spiked Amount	5.000	Range 70 - 125	Recovery	=	86.200%	
26) 1,2-Dichloroethane-d4	4.937	65	99157	4.985	ug/L	0.00
Spiked Amount	5.000	Range 70 - 130	Recovery	=	99.600%	
32) Benzene-d6	4.953	84	346196	4.223	ug/L	0.00
Spiked Amount	5.000	Range 70 - 125	Recovery	=	84.400%	
36) 1,2-Dichloropropane-d6	5.982	67	114768	4.550	ug/L	0.00
Spiked Amount	5.000	Range 60 - 140	Recovery	=	91.000%	
41) Toluene-d8	7.236	98	275181	3.628	ug/L	0.00
Spiked Amount	5.000	Range 70 - 130	Recovery	=	72.600%	
43) trans-1,3-Dichloroprop...	7.554	79	38108	4.064	ug/L	0.00
Spiked Amount	5.000	Range 55 - 130	Recovery	=	81.200%	
46) 2-Hexanone-d5	8.021	63	198964	54.580	ug/L	0.00
Spiked Amount	50.000	Range 45 - 130	Recovery	=	109.160%	
56) 1,1,2,2-Tetrachloroeth...	10.146	84	100939	4.714	ug/L	0.00
Spiked Amount	5.000	Range 65 - 120	Recovery	=	94.200%	
66) 1,2-Dichlorobenzene-d4	11.554	152	115029	4.929	ug/L	0.00
Spiked Amount	5.000	Range 80 - 120	Recovery	=	98.600%	
Target Compounds						
9) Trichlorofluoromethane	1.709	101	196123	5.009	ug/L	100
15) Methyl Acetate	2.121	43	10429	1.271	ug/L #	47
16) Methylene chloride	2.442	84	5103	0.210	ug/L	97
19) 1,1-Dichloroethane	3.111	63	11075	0.272	ug/L	98
22) cis-1,2-Dichloroethene	3.812	96	3526	0.152	ug/L #	72
34) Trichloroethene	5.834	95	41641	1.715	ug/L	96
35) Methylcyclohexane	5.982	83	29037	0.845	ug/L #	19
37) 1,2-Dichloropropane	5.982	63	12188	0.546	ug/L #	88
47) Tetrachloroethene	7.902	164	5724	0.293	ug/L	97
48) 2-Hexanone	8.017	43	26975	3.185	ug/L #	62
49) Dibromochloromethane	7.905	129	5870	0.298	ug/L #	11
61) 1,2,3-Trichloropropane	11.178	75	15257	1.301	ug/L #	64

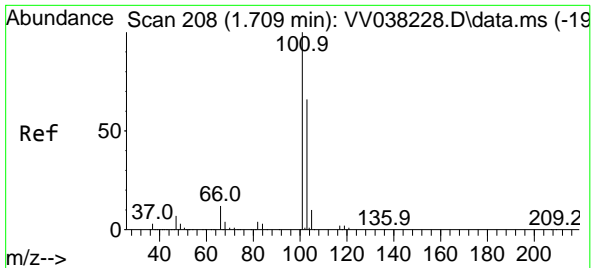
(#) = qualifier out of range (m) = manual integration (+) = signals summed

Data Path : Z:\voasrv\HPCHEM1\MSVOA_V\DATA\VV112124\
 Data File : VV038231.D
 Acq On : 21 Nov 2024 11:09
 Operator : SY/MD
 Sample : P4882-02DL 5X
 Misc : 25mL/MSVOA_V/WATER
 ALS Vial : 6 Sample Multiplier: 1

Instrument :
 MSVOA_V
 ClientSampleId :

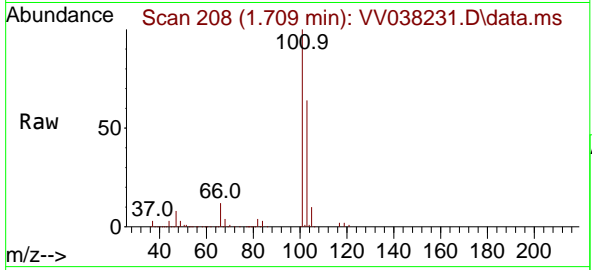
Quant Time: Nov 22 01:42:56 2024
 Quant Method : Z:\voasrv\HPCHEM1\MSVOA_V\Method\SFAMVTR111924WMA.M
 Quant Title : TRACE VOA SFAM1.0
 QLast Update : Fri Nov 22 01:41:27 2024
 Response via : Initial Calibration



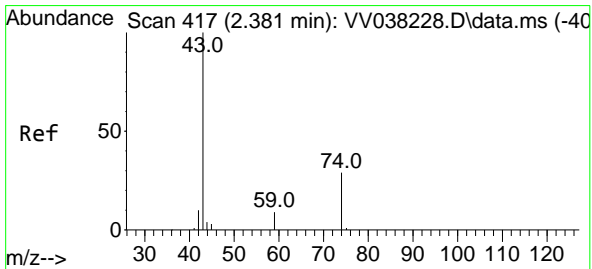
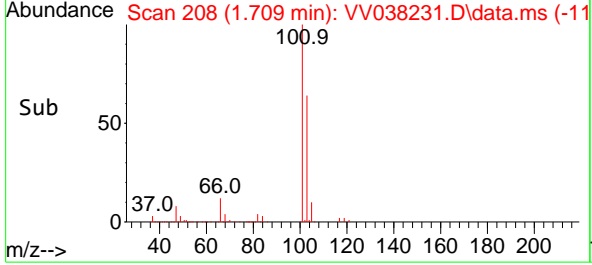
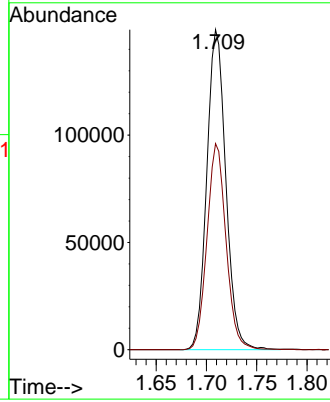


#9
 Trichlorofluoromethane
 Concen: 5.009 ug/L
 RT: 1.709 min Scan# 208
 Delta R.T. -0.000 min
 Lab File: VV038231.D
 Acq: 21 Nov 2024 11:09

Instrument : MSVOA_V
 ClientSampleId :

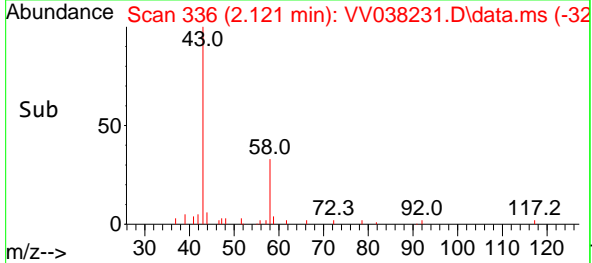
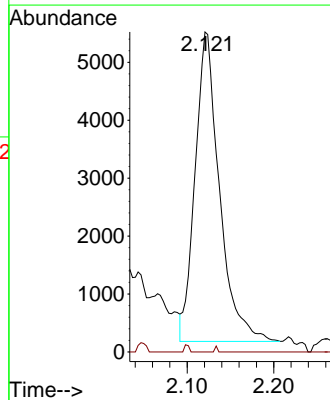
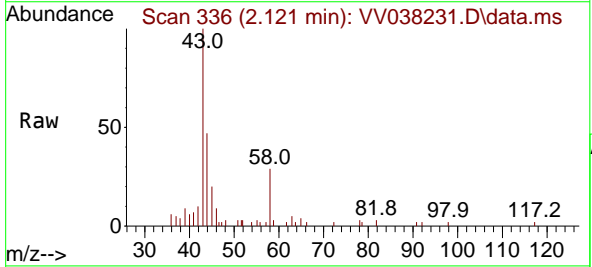


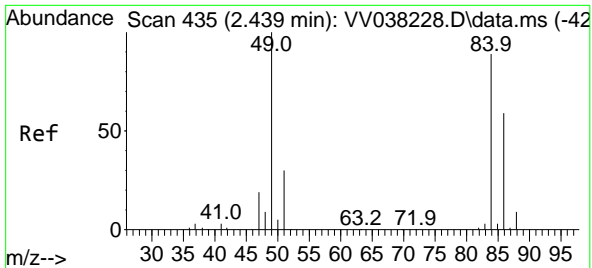
Tgt Ion:101 Resp: 196123
 Ion Ratio Lower Upper
 101 100
 103 64.5 51.5 77.3



#15
 Methyl Acetate
 Concen: 1.271 ug/L
 RT: 2.121 min Scan# 336
 Delta R.T. -0.261 min
 Lab File: VV038231.D
 Acq: 21 Nov 2024 11:09

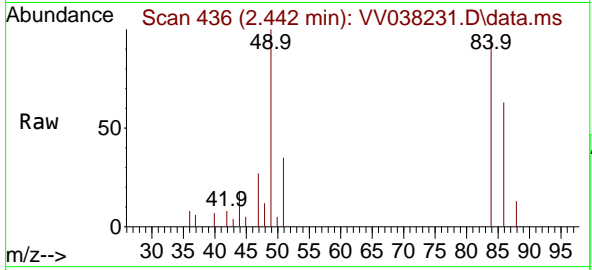
Tgt Ion: 43 Resp: 10429
 Ion Ratio Lower Upper
 43 100
 74 0.2 22.4 33.6#





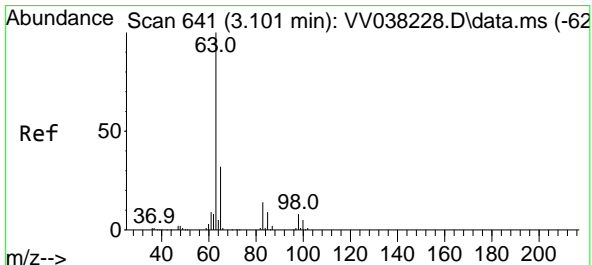
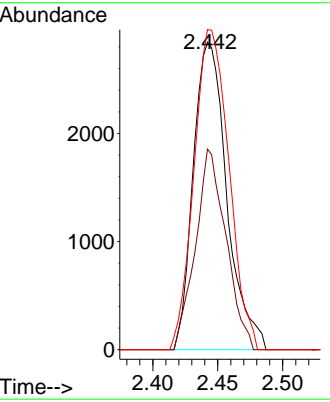
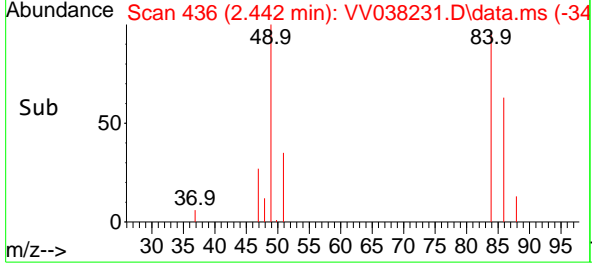
#16
 Methylene chloride
 Concen: 0.210 ug/L
 RT: 2.442 min Scan# 41
 Delta R.T. 0.003 min
 Lab File: VV038231.D
 Acq: 21 Nov 2024 11:09

Instrument : MSVOA_V
 ClientSampleId :

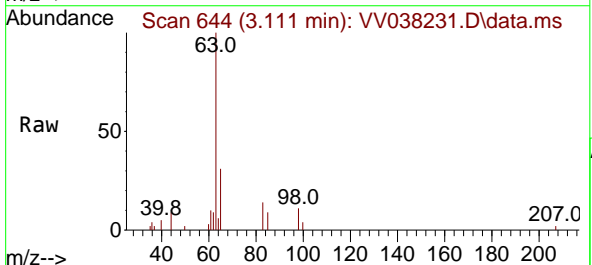


Tgt Ion: 84 Resp: 5103

Ion	Ratio	Lower	Upper
84	100		
86	65.2	44.2	82.2
49	104.0	74.9	139.1

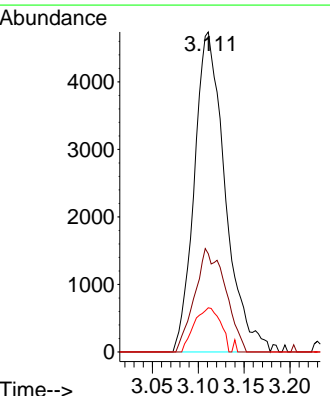
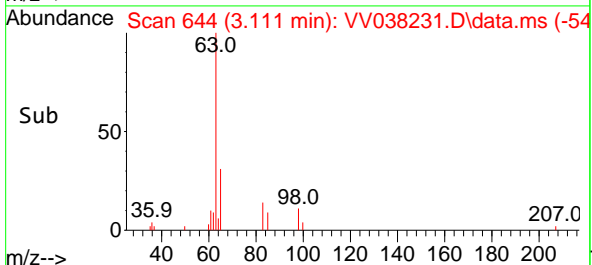


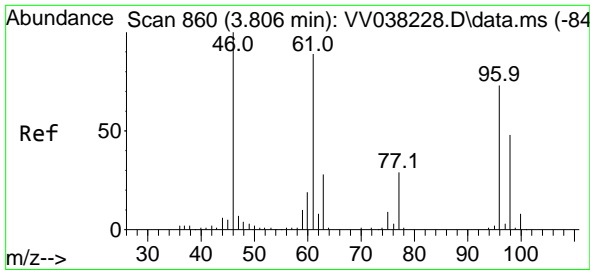
#19
 1,1-Dichloroethane
 Concen: 0.272 ug/L
 RT: 3.111 min Scan# 644
 Delta R.T. 0.009 min
 Lab File: VV038231.D
 Acq: 21 Nov 2024 11:09



Tgt Ion: 63 Resp: 11075

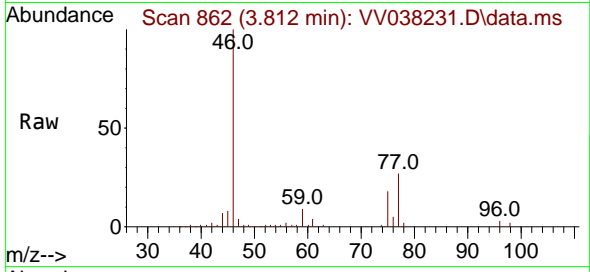
Ion	Ratio	Lower	Upper
63	100		
65	30.7	22.5	41.7
83	13.8	10.1	18.9



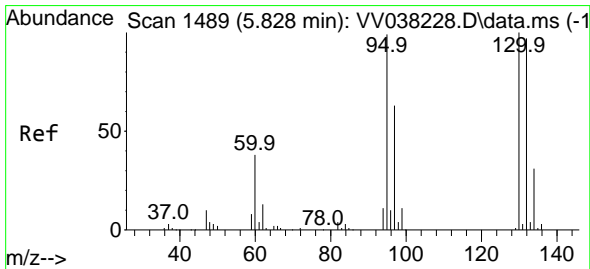
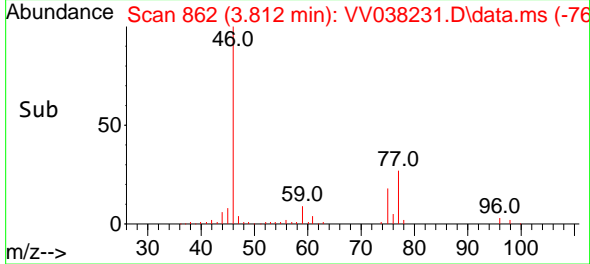
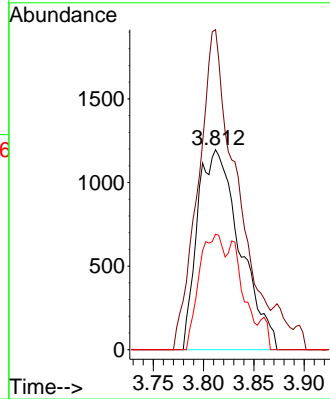


#22
 cis-1,2-Dichloroethene
 Concen: 0.152 ug/L
 RT: 3.812 min Scan# 860
 Delta R.T. 0.006 min
 Lab File: VV038231.D
 Acq: 21 Nov 2024 11:09

Instrument : MSVOA_V
 ClientSampleId :

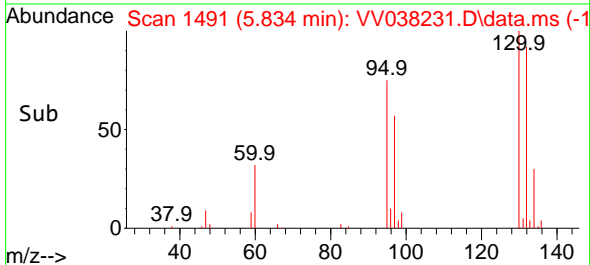
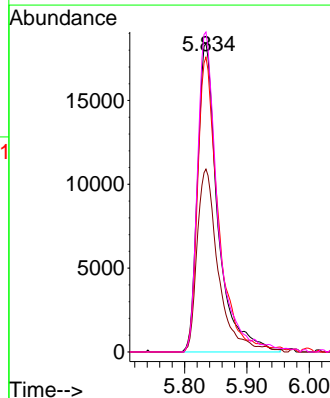
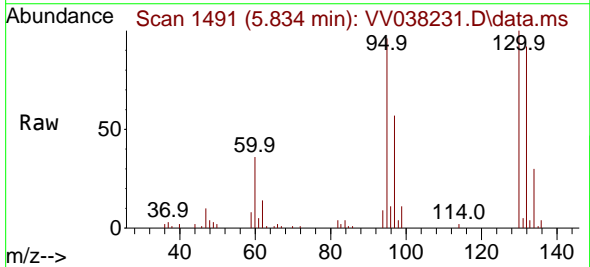


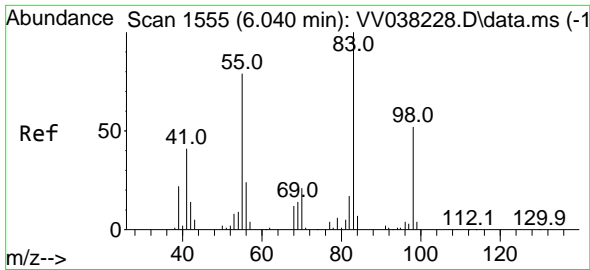
Tgt Ion: 96 Resp: 3526
 Ion Ratio Lower Upper
 96 100
 61 160.0 82.7 153.5#
 98 57.8 46.3 85.9



#34
 Trichloroethene
 Concen: 1.715 ug/L
 RT: 5.834 min Scan# 1491
 Delta R.T. 0.006 min
 Lab File: VV038231.D
 Acq: 21 Nov 2024 11:09

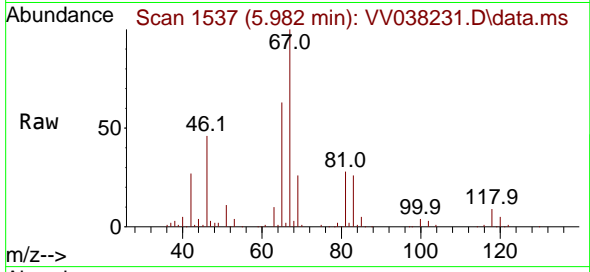
Tgt Ion: 95 Resp: 41641
 Ion Ratio Lower Upper
 95 100
 97 59.2 44.8 83.2
 132 95.5 68.3 126.8
 130 103.7 70.2 130.4



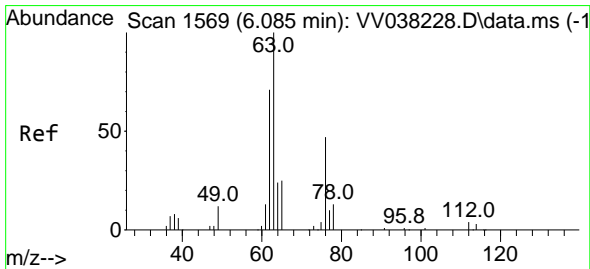
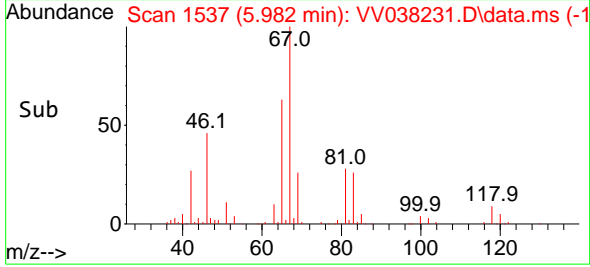
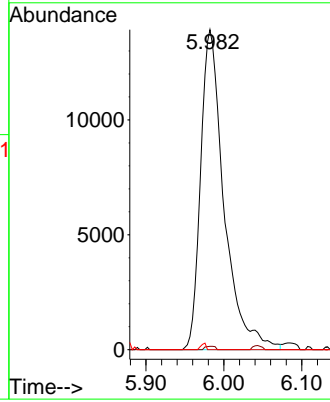


#35
 Methylcyclohexane
 Concen: 0.845 ug/L
 RT: 5.982 min Scan# 1537
 Delta R.T. -0.058 min
 Lab File: VV038231.D
 Acq: 21 Nov 2024 11:09

Instrument :
 MSVOA_V
 ClientSampleId :

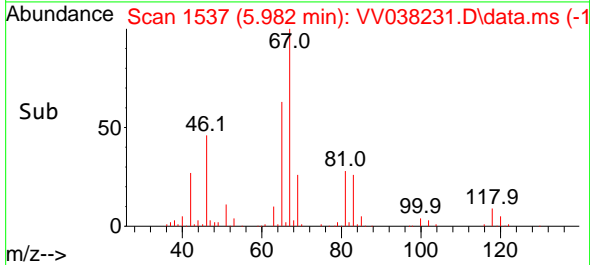
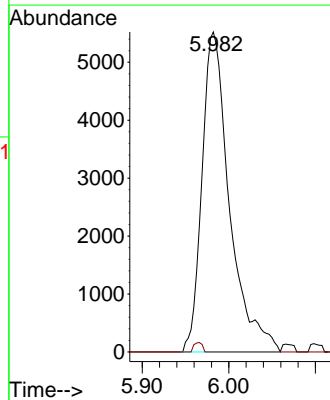
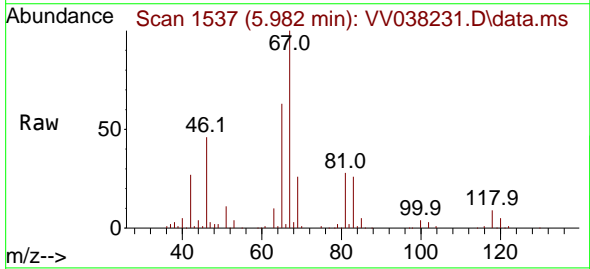


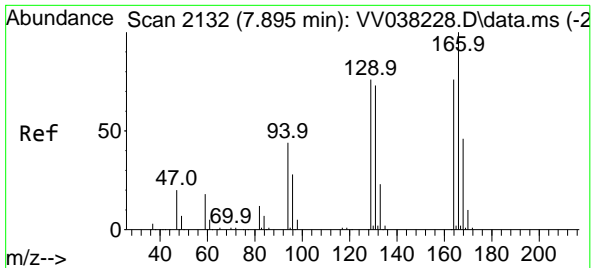
Tgt Ion: 83 Resp: 29037
 Ion Ratio Lower Upper
 83 100
 55 0.4 59.7 89.5#
 98 0.4 39.0 58.4#



#37
 1,2-Dichloropropane
 Concen: 0.546 ug/L
 RT: 5.982 min Scan# 1537
 Delta R.T. -0.103 min
 Lab File: VV038231.D
 Acq: 21 Nov 2024 11:09

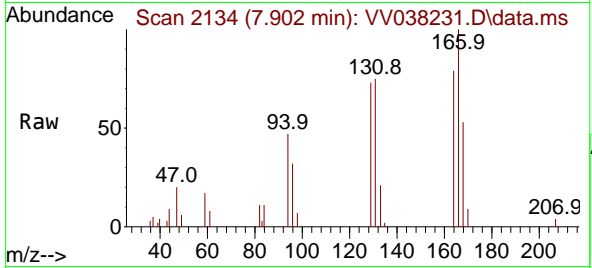
Tgt Ion: 63 Resp: 12188
 Ion Ratio Lower Upper
 63 100
 112 0.9 3.9 5.9#





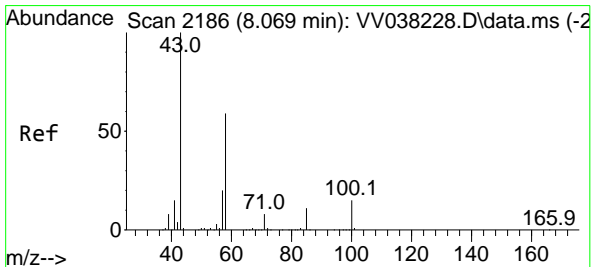
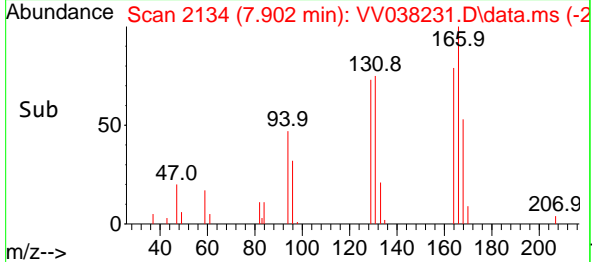
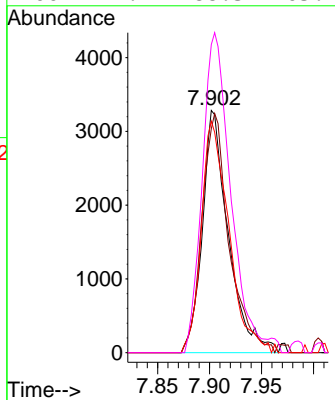
#47
 Tetrachloroethene
 Concen: 0.293 ug/L
 RT: 7.902 min Scan# 2132
 Delta R.T. 0.006 min
 Lab File: VV038231.D
 Acq: 21 Nov 2024 11:09

Instrument :
 MSVOA_V
 ClientSampleId :



Tgt Ion:164 Resp: 5724

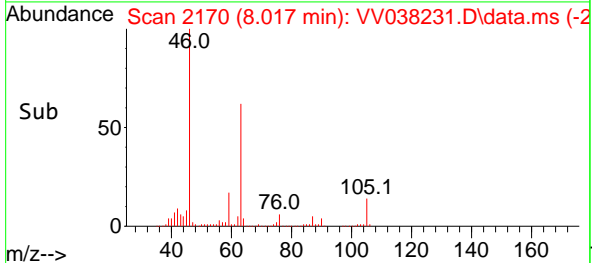
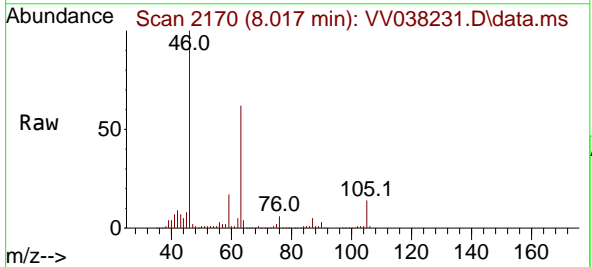
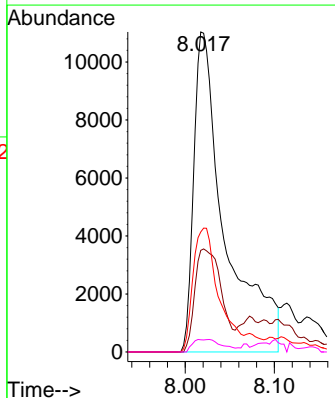
Ion	Ratio	Lower	Upper
164	100		
129	92.4	68.5	127.1
131	95.6	64.8	120.4
166	127.2	88.3	163.9

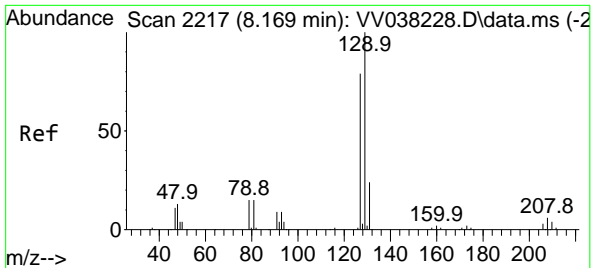


#48
 2-Hexanone
 Concen: 3.185 ug/L
 RT: 8.017 min Scan# 2170
 Delta R.T. -0.052 min
 Lab File: VV038231.D
 Acq: 21 Nov 2024 11:09

Tgt Ion: 43 Resp: 26975

Ion	Ratio	Lower	Upper
43	100		
58	27.5	49.2	73.8#
57	32.0	16.9	25.3#
100	1.5	11.8	17.8#

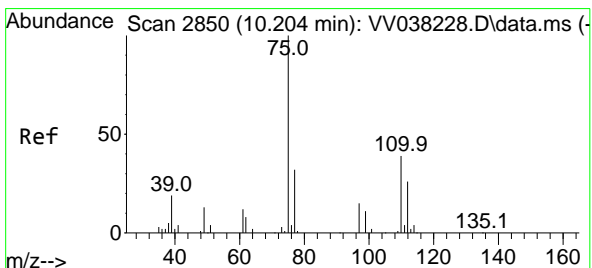
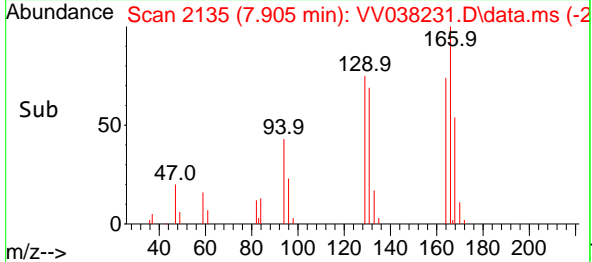
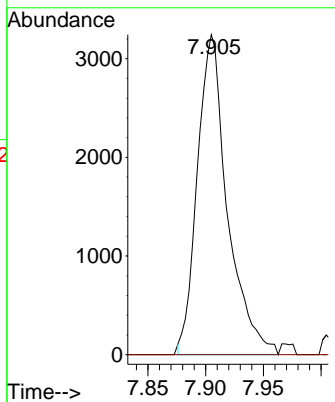
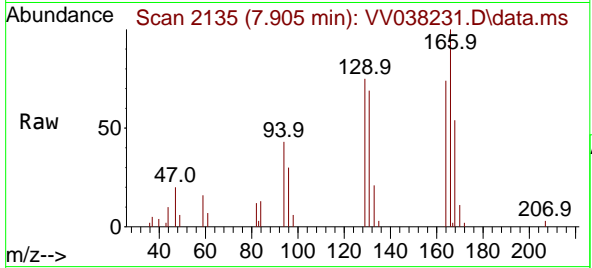




#49
 Dibromochloromethane
 Concen: 0.298 ug/L
 RT: 7.905 min Scan# 2135
 Delta R.T. -0.264 min
 Lab File: VV038231.D
 Acq: 21 Nov 2024 11:09

Instrument : MSVOA_V
 ClientSampleId :

Tgt Ion:129 Resp: 5870
 Ion Ratio Lower Upper
 129 100
 127 0.0 53.5 99.3#



#61
 1,2,3-Trichloropropane
 Concen: 1.301 ug/L
 RT: 11.178 min Scan# 3153
 Delta R.T. 0.974 min
 Lab File: VV038231.D
 Acq: 21 Nov 2024 11:09

Tgt Ion: 75 Resp: 15257
 Ion Ratio Lower Upper
 75 100
 77 31.4 26.4 39.6
 110 1.6 32.3 48.5#

