

Data Path : Z:\VOASRV\HPCHEM1\MSVOA V\DATA\VV112619\
 Data File : VV013799.D
 Acq On : 26 Nov 2019 20:27
 Operator : SY/MD
 Sample : K6055-02
 Misc : 25.0mL/MSVOA V/WATER
 ALS Vial : 25 Sample Multiplier: 1

Instrument :
 MSVOA_V
 ClientSampleId :
 C0K36

Quant Time: Nov 27 04:07:34 2019
 Quant Method : Z:\VOASRV\HPCHEM1\MSVOA_V\METHOD\SOMVTR112219WMA.M
 Quant Title : TRACE VOA SOM01.0
 QLast Update : Wed Nov 27 03:09:16 2019
 Response via : Initial Calibration

Internal Standards	R.T.	QIon	Response	Conc	Units	Dev(Min)
1) 1,4-Difluorobenzene	5.66	114	327865	5.00	ug/L	0.00
28) Chlorobenzene-d5	8.89	117	317975	5.00	ug/L	0.00
60) 1,4-Dichlorobenzene-d4	11.29	152	137417	5.00	ug/L	0.00

System Monitoring Compounds

4) Vinyl Chloride-d3	1.32	65	76210	3.76	ug/L	0.00
Spiked Amount	5.000	Range	40 - 130	Recovery	=	75.20%
7) Chloroethane-d5	1.58	69	77029	4.47	ug/L	0.00
Spiked Amount	5.000	Range	65 - 130	Recovery	=	89.40%
11) 1,1-Dichloroethene-d2	2.13	63	109017	3.19	ug/L	0.00
Spiked Amount	5.000	Range	60 - 125	Recovery	=	63.80%
20) 2-Butanone-d5	3.96	46	246425	58.41	ug/L	0.01
Spiked Amount	50.000	Range	40 - 130	Recovery	=	116.82%
24) Chloroform-d	4.40	84	178452	4.36	ug/L	0.00
Spiked Amount	5.000	Range	70 - 125	Recovery	=	87.20%
26) 1,2-Dichloroethane-d4	5.08	65	100609	5.17	ug/L	0.00
Spiked Amount	5.000	Range	70 - 130	Recovery	=	103.40%
32) Benzene-d6	5.09	84	352385	4.30	ug/L	0.00
Spiked Amount	5.000	Range	70 - 125	Recovery	=	86.00%
36) 1,2-Dichloropropane-d6	6.11	67	114170	4.67	ug/L	0.00
Spiked Amount	5.000	Range	60 - 140	Recovery	=	93.40%
41) Toluene-d8	7.36	98	287044	3.73	ug/L	0.00
Spiked Amount	5.000	Range	70 - 130	Recovery	=	74.60%
43) trans-1,3-Dichloropropene-	7.66	79	38196	4.01	ug/L	0.00
Spiked Amount	5.000	Range	55 - 130	Recovery	=	80.20%
46) 2-Hexanone-d5	8.14	63	177433	50.55	ug/L	0.00
Spiked Amount	50.000	Range	45 - 130	Recovery	=	101.10%
57) 1,1,2,2-Tetrachloroethane-	10.26	84	91052	5.37	ug/L	0.00
Spiked Amount	5.000	Range	65 - 120	Recovery	=	107.40%
64) 1,2-Dichlorobenzene-d4	11.67	152	124076	5.11	ug/L	0.00
Spiked Amount	5.000	Range	80 - 120	Recovery	=	102.20%

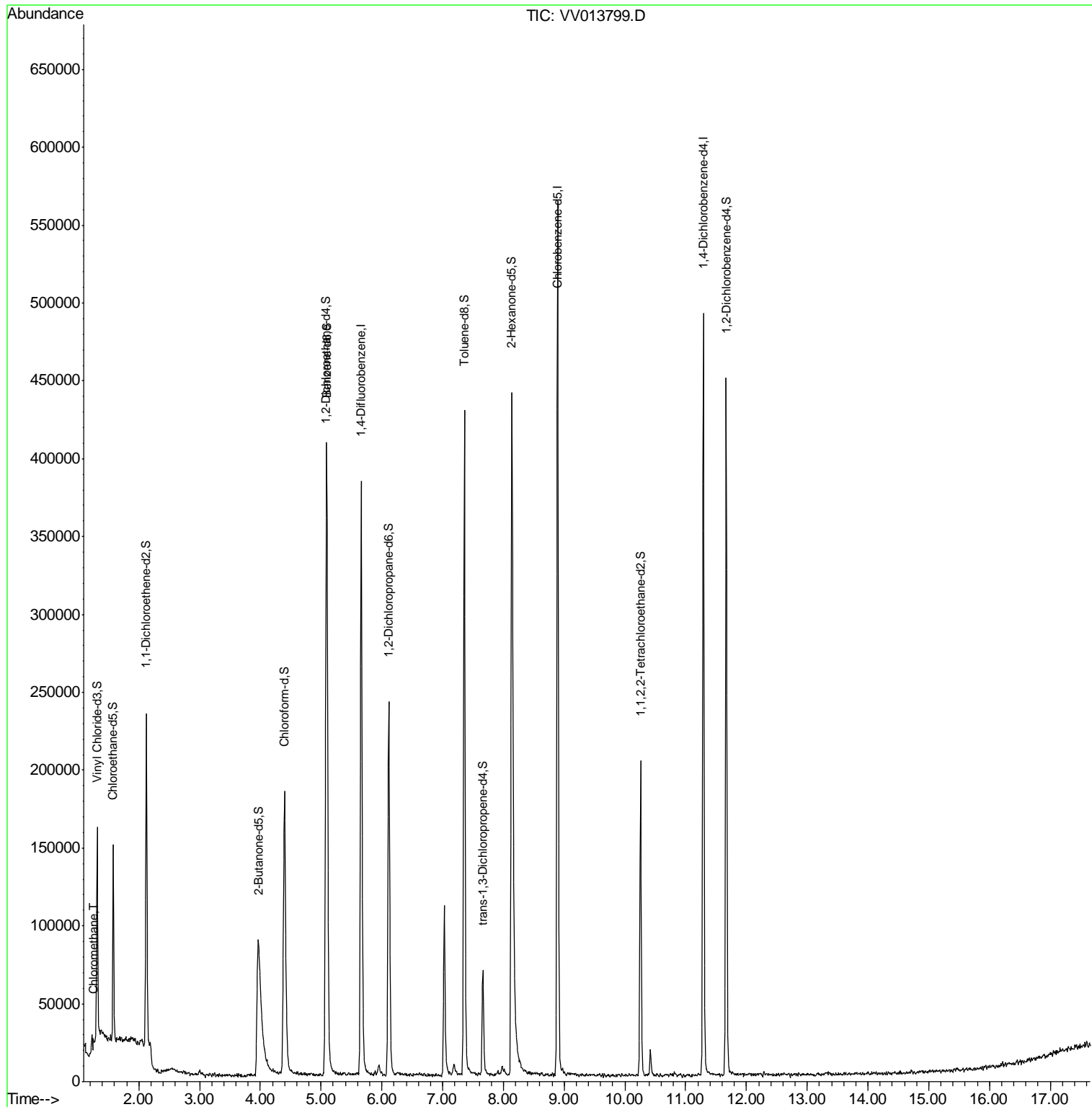
Target Compounds					Ovalue
3) Chloromethane	1.25	50	3872	0.202 ug/L	91

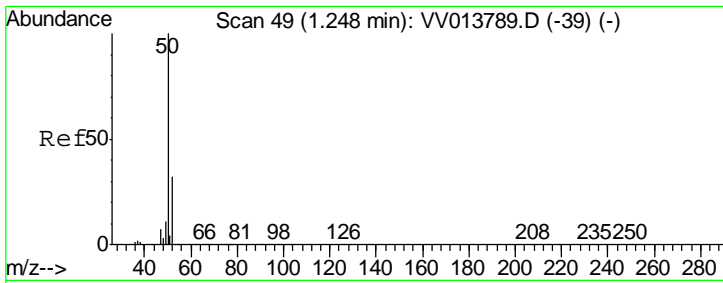
(#) = qualifier out of range (m) = manual integration (+) = signals summed

Data Path : Z:\VOASRV\HPCHEM1\MSVOA V\DATA\VV112619\
 Data File : VV013799.D
 Acq On : 26 Nov 2019 20:27
 Operator : SY/MD
 Sample : K6055-02
 Misc : 25.0mL/MSVOA V/WATER
 ALS Vial : 25 Sample Multiplier: 1

Instrument :
 MSVOA_V
 ClientSampled :
 C0K36

Quant Time: Nov 27 04:07:34 2019
 Quant Method : Z:\VOASRV\HPCHEM1\MSVOA_V\METHOD\SOMVTR112219WMA.M
 Quant Title : TRACE VOA SOM01.0
 QLast Update : Wed Nov 27 03:09:16 2019
 Response via : Initial Calibration





#3
 Chloromethane
 Concen: 0.202 ug/L
 RT: 1.25 min Scan# 50
 Delta R.T. 0.00 min
 Lab File: VV013799.D
 Acq: 26 Nov 2019 20:27

Instrument :
 MSVOA_V
 ClientSampled :
 C0K36

Tot Ion: 50 Resp: 3872
 Ion Ratio Lower Upper
 50 100
 52 37.0 22.5 41.7

