

Data Path : Z:\VOASRV\HPCHEM1\MSVOA V\DATA\VV112619\
 Data File : VV013792.D
 Acq On : 26 Nov 2019 17:40
 Operator : SY/MD
 Sample : K5993-03
 Misc : 25.0mL/MSVOA V/WATER
 ALS Vial : 18 Sample Multiplier: 1

Instrument :
 MSVOA_V
 ClientSampled :
 GARD8

Integration Parameters: rteint.p
 Integrator: RTE
 Smoothing : ON Filtering: 5
 Sampling : 1 Min Area: 3 % of largest Peak
 Start Thrs: 0.1 Max Peaks: 100
 Stop Thrs : 0 Peak Location: TOP

If leading or trailing edge < 100 prefer < Baseline drop else tangent >
 Peak separation: 5

Method : Z:\VOASRV\HPCHEM1\MSVOA_V\METHOD\SOMVTR112219WMA.M
 Title : TRACE VOA SOM01.0

Signal : TIC

peak #	R.T. min	first scan	max scan	last scan	PK TY	peak height	corr. area	corr. % max.	% of total
1	1.315	63	70	85	rVB	150312	156934	14.89%	1.559%
2	1.579	146	152	160	rVB	135362	144479	13.71%	1.435%
3	2.126	313	322	335	rVB3	293834	452738	42.95%	4.497%
4	3.965	880	894	928	rBV	78710	370694	35.17%	3.682%
5	4.142	939	949	972	rVB2	33120	89681	8.51%	0.891%
6	4.396	1011	1028	1052	rBV3	174601	478160	45.37%	4.750%
7	4.653	1091	1108	1128	rVB2	30871	81788	7.76%	0.812%
8	5.090	1227	1244	1268	rBV2	434205	1054016	100.00%	10.470%
9	5.659	1408	1421	1443	rBV	370476	762740	72.37%	7.577%
10	5.949	1507	1511	1524	rVB	8717	15087	1.43%	0.150%
11	6.113	1548	1562	1587	rBV	249398	514324	48.80%	5.109%
12	7.029	1835	1847	1865	rBV2	113650	215081	20.41%	2.136%
13	7.357	1936	1949	1969	rBV	458577	816452	77.46%	8.110%
14	7.662	2032	2044	2059	rBV	72624	126630	12.01%	1.258%
15	8.013	2138	2153	2170	rBV	582078	962093	91.28%	9.557%
16	8.138	2180	2192	2233	rBV2	421444	1036177	98.31%	10.293%
17	8.891	2412	2426	2446	rBV	595747	980476	93.02%	9.739%
18	10.257	2839	2851	2869	rBV2	190505	309975	29.41%	3.079%
19	11.289	3160	3172	3192	rBV	488693	783570	74.34%	7.783%
20	11.665	3277	3289	3308	rBV	450786	715972	67.93%	7.112%

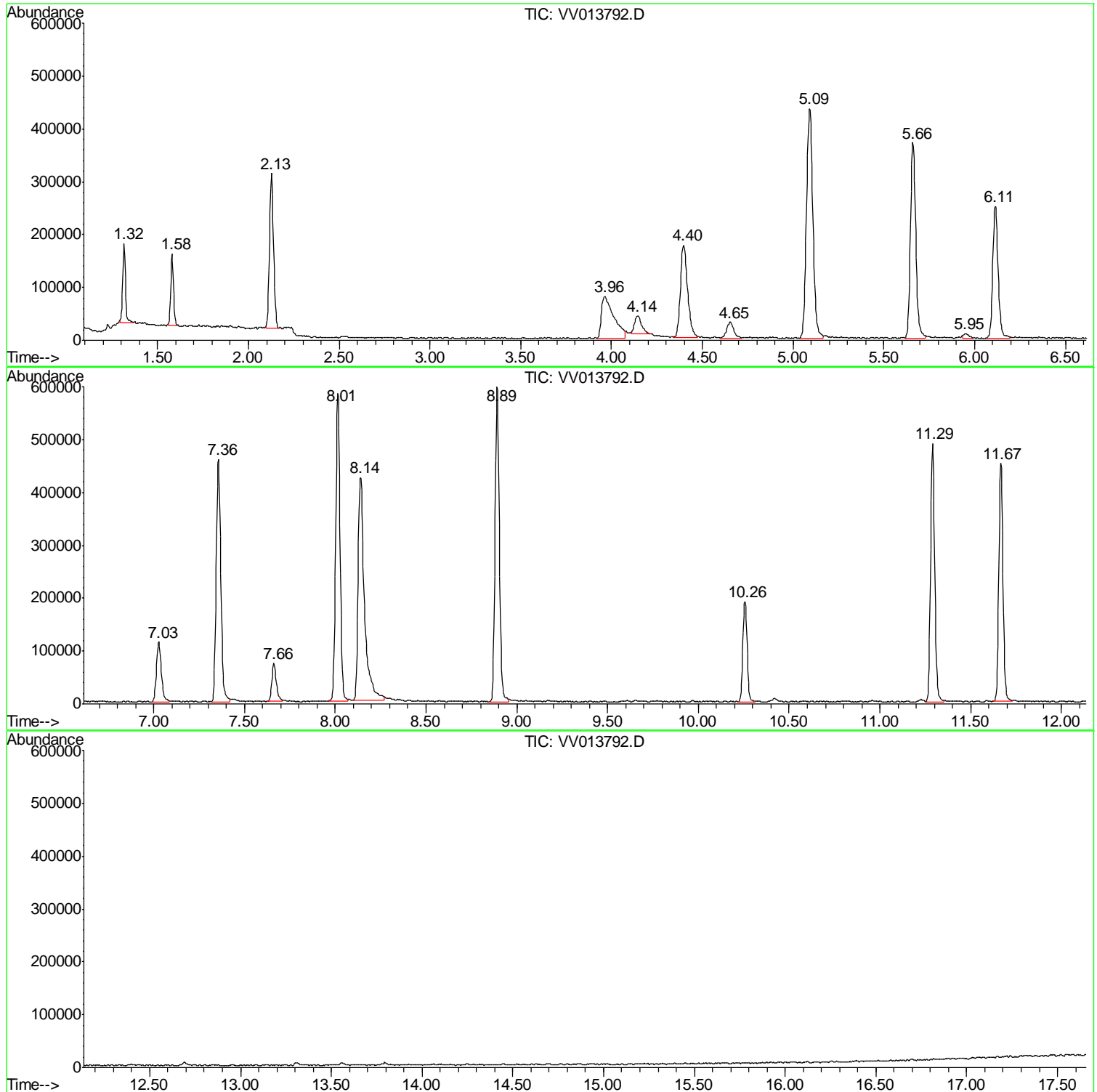
Sum of corrected areas: 10067067

Data Path : Z:\VOASRV\HPCHEM1\MSVOA V\DATA\VV112619\
Data File : VV013792.D
Acq On : 26 Nov 2019 17:40
Operator : SY/MD
Sample : K5993-03
Misc : 25.0mL/MSVOA V/WATER
ALS Vial : 18 Sample Multiplier: 1

Instrument :
MSVOA_V
ClientSampled :
GARD8

Quant Method : Z:\VOASRV\HPCHEM1\MSVOA_V\METHOD\SOMVTR112219WMA.M
Quant Title : TRACE VOA SOM01.0

TIC Library : C:\DATABASE\NIST11.L
TIC Integration Parameters: LSCINT.P



Data Path : Z:\VOASRV\HPCHEM1\MSVOA V\DATA\VV112619\
 Data File : VV013792.D
 Acq On : 26 Nov 2019 17:40
 Operator : SY/MD
 Sample : K5993-03
 Misc : 25.0mL/MSVOA V/WATER
 ALS Vial : 18 Sample Multiplier: 1

Instrument :
 MSVOA_V
 ClientSampleID :
 GARD8

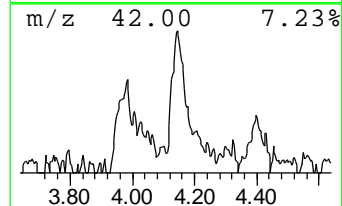
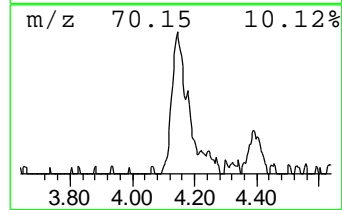
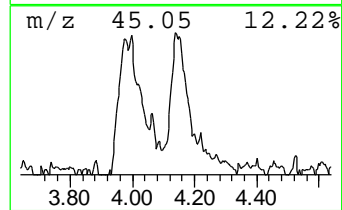
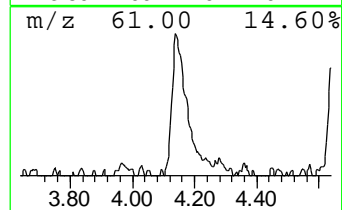
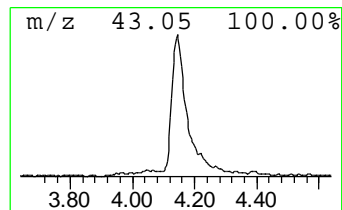
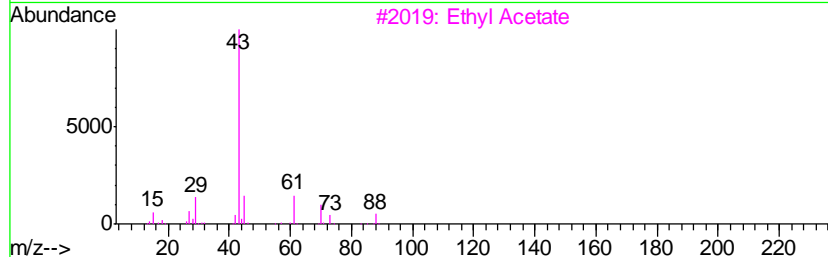
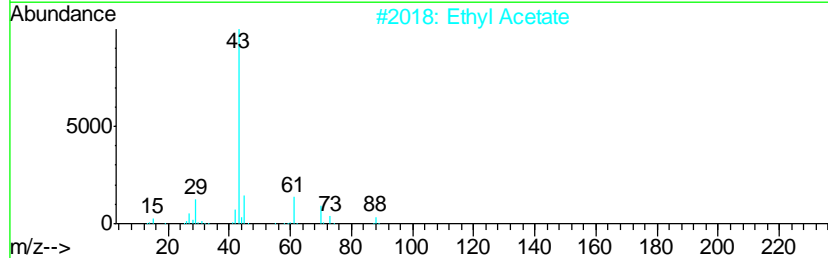
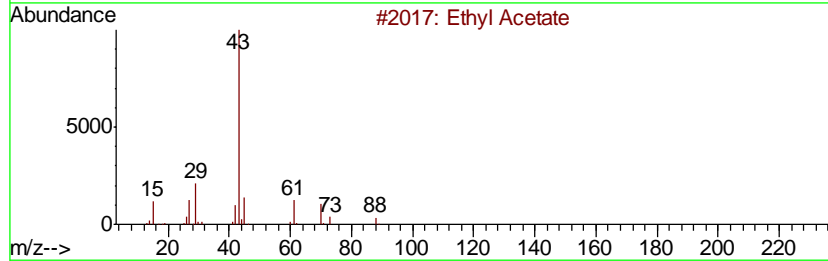
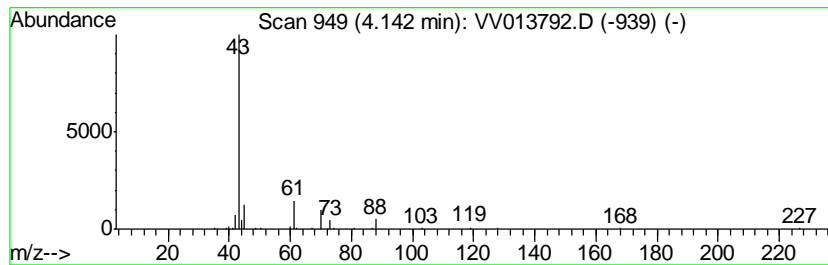
Quant Method : Z:\VOASRV\HPCHEM1\MSVOA_V\METHOD\SOMVTR112219WMA.M
 Quant Title : TRACE VOA SOM01.0

TIC Library : C:\DATABASE\NIST11.L
 TIC Integration Parameters: LSCINT.P

 Peak Number 1 Ethyl Acetate Concentration Rank 2

R.T.	EstConc	Area	Relative to ISTD	R.T.
4.14	0.59 ug/L	89681	1,4-Difluorobenzene	5.66

Hit#	of	Tentative ID	MW	MolForm	CAS#	Qual
1	5	Ethyl Acetate	88	C4H8O2	000141-78-6	86
2		Ethyl Acetate	88	C4H8O2	000141-78-6	86
3		Ethyl Acetate	88	C4H8O2	000141-78-6	86
4		Ethyl Acetate	88	C4H8O2	000141-78-6	86
5		CH3C(O)CH2CH2OH	88	C4H8O2	000590-90-9	9



Data Path : Z:\VOASRV\HPCHEM1\MSVOA_V\DATA\VV112619\
Data File : VV013792.D
Acq On : 26 Nov 2019 17:40
Operator : SY/MD
Sample : K5993-03
Misc : 25.0mL/MSVOA_V/WATER
ALS Vial : 18 Sample Multiplier: 1

Instrument :
MSVOA_V
ClientSampleId :
GARD8

Quant Method : Z:\VOASRV\HPCHEM1\MSVOA_V\METHOD\SOMVTR112219WMA.M
Quant Title : TRACE VOA SOM01.0

TIC Library : C:\DATABASE\NIST11.L
TIC Integration Parameters: LSCINT.P

TIC Top Hit name	RT	EstConc	Units	Response	--Internal Standard--			
					#	RT	Resp	Conc
Ethyl Acetate	4.14	0.6	ug/L	89681	1	5.66	762740	5.0