

Data Path : Z:\VOASRV\HPCHEM1\MSVOA_V\DATA\VV112918\
 Data File : VV008777.D
 Acq On : 29 Nov 2018 20:53
 Operator : SY/MD
 Sample : J6076-18
 Misc : 25.0 mL/MSVOA_V/WATER
 ALS Vial : 19 Sample Multiplier: 1

Instrument :
 MSVOA_V
 ClientSampleID :
 YALS9

Quant Time: Nov 30 05:01:16 2018
 Quant Method : Z:\VOASRV\HPCHEM1\MSVOA_V\METHOD\SOMVTR112918WMA.M
 Quant Title : TRACE VOA SOM01.0
 QLast Update : Fri Nov 30 04:55:05 2018
 Response via : Initial Calibration

| Internal Standards | R.T. | QIon | Response | Conc | Units | Dev(Min) |
|----------------------------|-------|------|----------|------|-------|----------|
| 1) 1,4-Difluorobenzene | 5.67 | 114 | 34633 | 5.00 | ug/L | 0.00 |
| 28) Chlorobenzene-d5 | 8.90 | 117 | 30122 | 5.00 | ug/L | 0.00 |
| 60) 1,4-Dichlorobenzene-d4 | 11.30 | 152 | 10381 | 5.00 | ug/L | 0.00 |

System Monitoring Compounds

| | | | | | | |
|--------------------------------|--------|-------|----------|----------|------|---------|
| 4) Vinyl Chloride-d3 | 1.32 | 65 | 11556 | 4.83 | ug/L | 0.00 |
| Spiked Amount | 5.000 | Range | 40 - 130 | Recovery | = | 96.60% |
| 7) Chloroethane-d5 | 1.59 | 69 | 9099 | 5.35 | ug/L | 0.00 |
| Spiked Amount | 5.000 | Range | 65 - 130 | Recovery | = | 107.00% |
| 11) 1,1-Dichloroethene-d2 | 2.14 | 63 | 16949 | 4.12 | ug/L | 0.00 |
| Spiked Amount | 5.000 | Range | 60 - 125 | Recovery | = | 82.40% |
| 20) 2-Butanone-d5 | 3.96 | 46 | 27700 | 51.62 | ug/L | -0.01 |
| Spiked Amount | 50.000 | Range | 40 - 130 | Recovery | = | 103.24% |
| 24) Chloroform-d | 4.41 | 84 | 23274 | 4.91 | ug/L | 0.00 |
| Spiked Amount | 5.000 | Range | 70 - 125 | Recovery | = | 98.20% |
| 26) 1,2-Dichloroethane-d4 | 5.09 | 65 | 12928 | 5.69 | ug/L | 0.00 |
| Spiked Amount | 5.000 | Range | 70 - 130 | Recovery | = | 113.80% |
| 32) Benzene-d6 | 5.11 | 84 | 47462 | 5.16 | ug/L | 0.00 |
| Spiked Amount | 5.000 | Range | 70 - 125 | Recovery | = | 103.20% |
| 36) 1,2-Dichloropropane-d6 | 6.13 | 67 | 14766 | 5.34 | ug/L | 0.00 |
| Spiked Amount | 5.000 | Range | 60 - 140 | Recovery | = | 106.80% |
| 41) Toluene-d8 | 7.36 | 98 | 41071 | 4.84 | ug/L | 0.00 |
| Spiked Amount | 5.000 | Range | 70 - 130 | Recovery | = | 96.80% |
| 43) trans-1,3-Dichloropropene- | 7.67 | 79 | 4264 | 4.60 | ug/L | 0.00 |
| Spiked Amount | 5.000 | Range | 55 - 130 | Recovery | = | 92.00% |
| 46) 2-Hexanone-d5 | 8.14 | 63 | 13312 | 34.52 | ug/L | 0.00 |
| Spiked Amount | 50.000 | Range | 45 - 130 | Recovery | = | 69.04% |
| 57) 1,1,2,2-Tetrachloroethane- | 10.27 | 84 | 8544 | 4.89 | ug/L | 0.00 |
| Spiked Amount | 5.000 | Range | 65 - 120 | Recovery | = | 97.80% |
| 64) 1,2-Dichlorobenzene-d4 | 11.68 | 152 | 11773 | 5.51 | ug/L | 0.00 |
| Spiked Amount | 5.000 | Range | 80 - 120 | Recovery | = | 110.20% |

Target Compounds

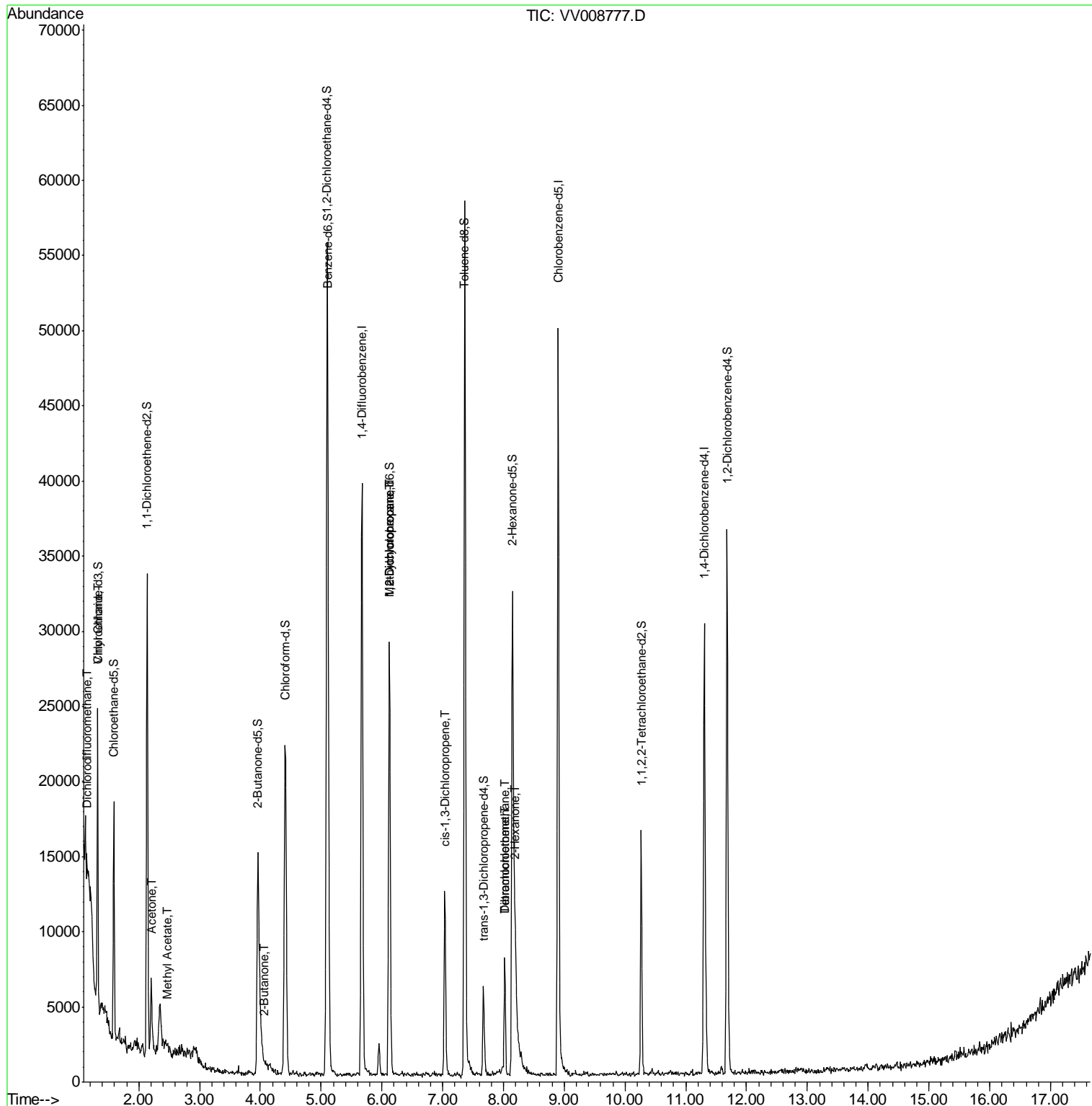
| Target Compounds | R.T. | QIon | Response | Conc | Units | Qvalue |
|-----------------------------|------|------|----------|--------|--------|--------|
| 2) Dichlorodifluoromethane | 1.14 | 85 | 776 | 0.253 | ug/L | 93 |
| 8) Chloroethane | 1.33 | 64 | 241 | 0.184 | ug/L # | 1 |
| 13) Acetone | 2.21 | 43 | 5364 | 20.056 | ug/L | 93 |
| 15) Methyl Acetate | 2.47 | 43 | 226 | 0.316 | ug/L # | 50 |
| 21) 2-Butanone | 4.06 | 43 | 706 | 1.317 | ug/L # | 48 |
| 35) Methylcyclohexane | 6.12 | 83 | 3532 | 0.887 | ug/L # | 22 |
| 37) 1,2-Dichloropropane | 6.12 | 63 | 1539 | 0.685 | ug/L # | 87 |
| 39) cis-1,3-Dichloropropene | 7.04 | 75 | 253 | 0.086 | ug/L # | 40 |
| 47) Tetrachloroethene | 8.02 | 164 | 1793 | 0.923 | ug/L | 93 |
| 48) 2-Hexanone | 8.20 | 43 | 4517 | 5.537 | ug/L # | 76 |
| 49) Dibromochloromethane | 8.02 | 129 | 1678 | 1.035 | ug/L # | 10 |

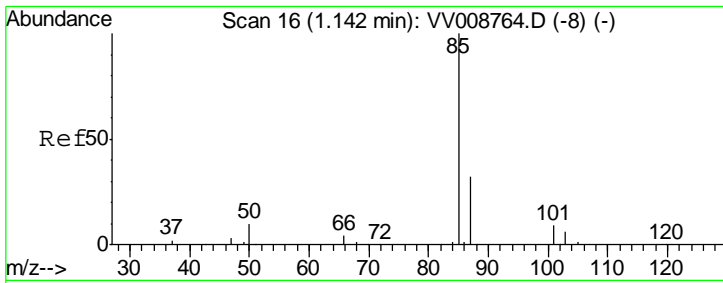
(#) = qualifier out of range (m) = manual integration (+) = signals summed

Data Path : Z:\VOASRV\HPCHEM1\MSVOA_V\DATA\VV112918\
 Data File : VV008777.D
 Acq On : 29 Nov 2018 20:53
 Operator : SY/MD
 Sample : J6076-18
 Misc : 25.0 mL/MSVOA_V/WATER
 ALS Vial : 19 Sample Multiplier: 1

Instrument :
 MSVOA_V
 ClientSampled :
 YALS9

Quant Time: Nov 30 05:01:16 2018
 Quant Method : Z:\VOASRV\HPCHEM1\MSVOA_V\METHOD\SOMVTR112918WMA.M
 Quant Title : TRACE VOA SOM01.0
 QLast Update : Fri Nov 30 04:55:05 2018
 Response via : Initial Calibration

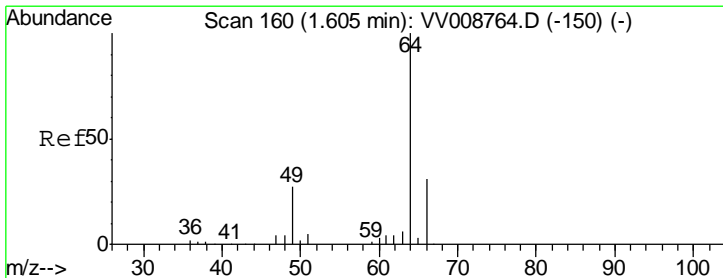
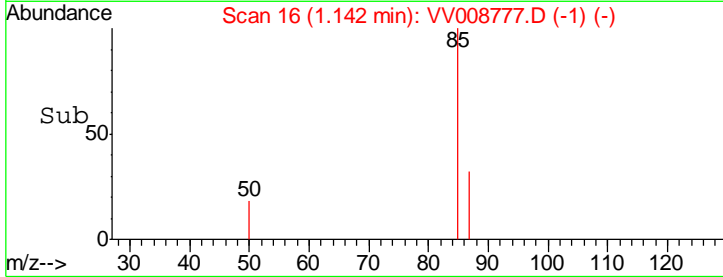
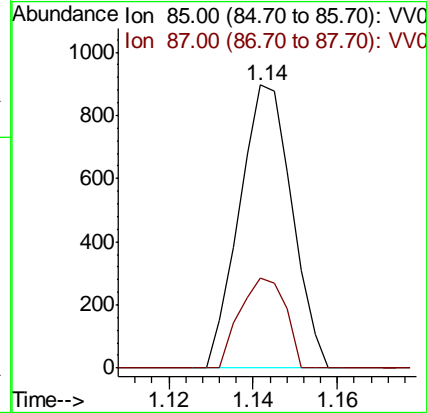
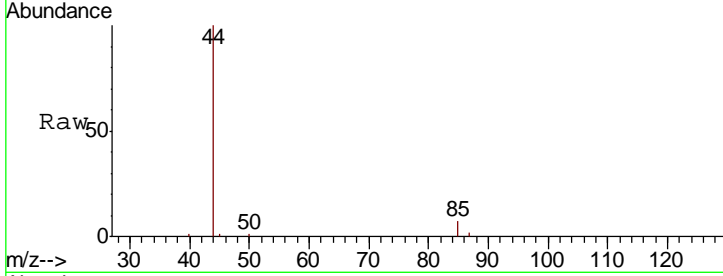




#2
 Dichlorodifluoromethane
 Concen: 0.253 ug/L
 RT: 1.14 min Scan# 16
 Delta R.T. -0.00 min
 Lab File: VV008777.D
 Acq: 29 Nov 2018 20:53

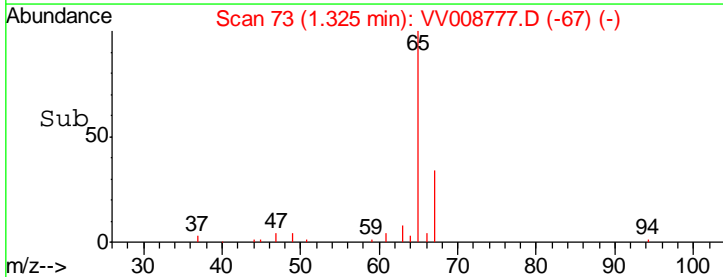
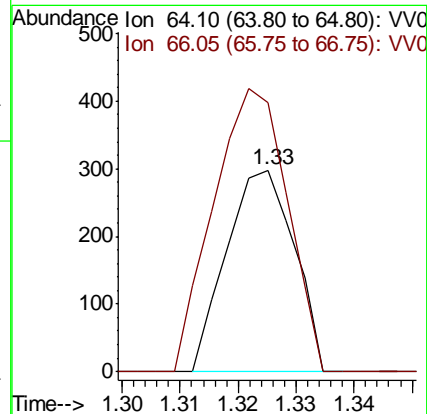
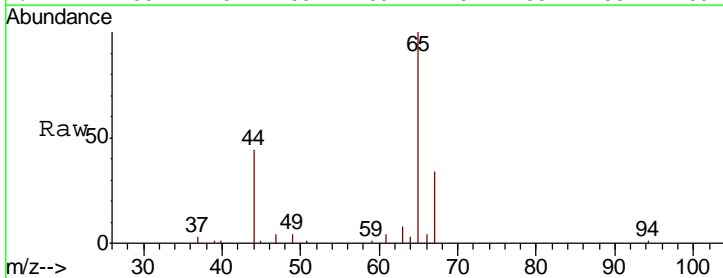
Instrument :
 MSVOA_V
 ClientSampled :
 YALS9

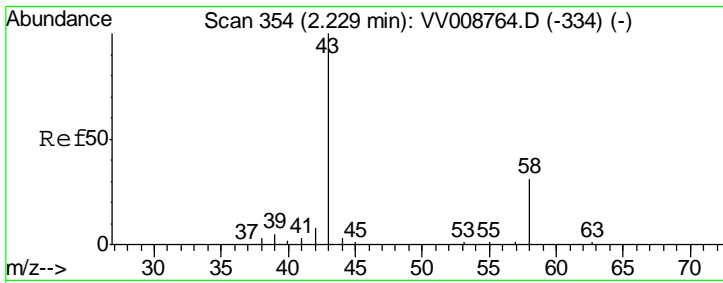
Tgt Ion: 85 Resp: 776
 Ion Ratio Lower Upper
 85 100
 87 27.6 25.4 38.0



#8
 Chloroethane
 Concen: 0.184 ug/L
 RT: 1.33 min Scan# 73
 Delta R.T. -0.28 min
 Lab File: VV008777.D
 Acq: 29 Nov 2018 20:53

Tgt Ion: 64 Resp: 241
 Ion Ratio Lower Upper
 64 100
 66 133.6 21.8 40.6#

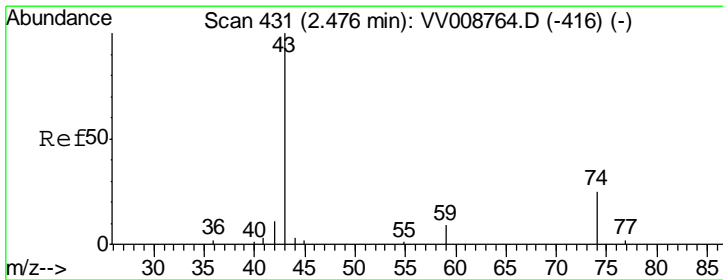
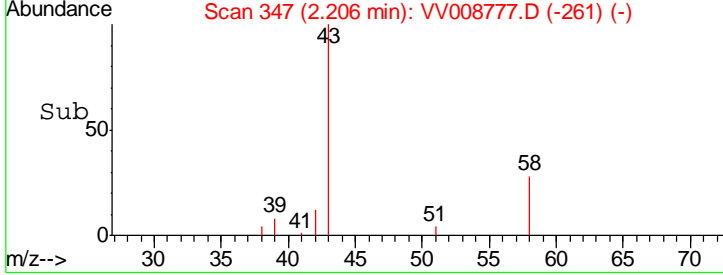
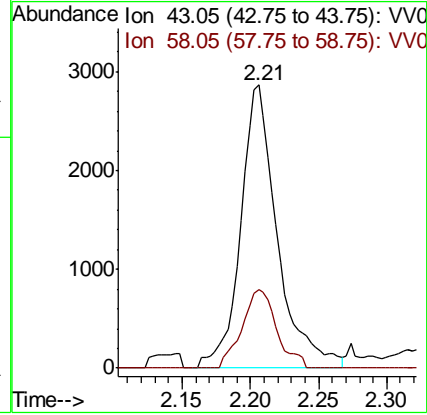
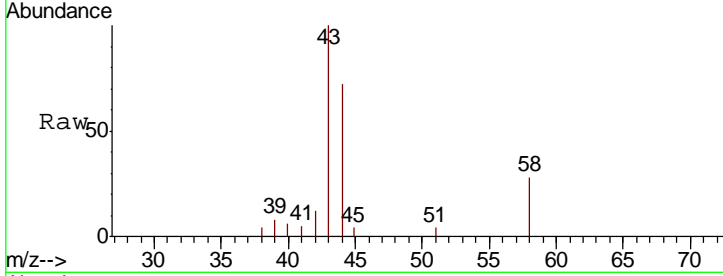




#13
 Acetone
 Concen: 20.056 ug/L
 RT: 2.21 min Scan# 347
 Delta R.T. -0.02 min
 Lab File: VV008777.D
 Acq: 29 Nov 2018 20:53

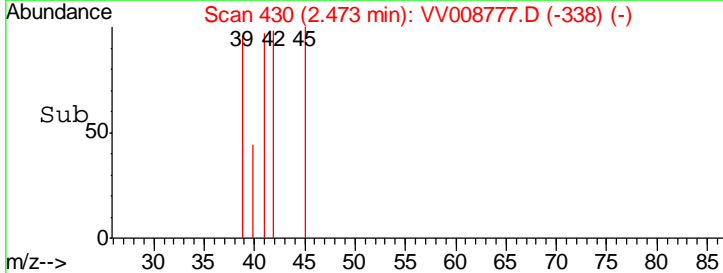
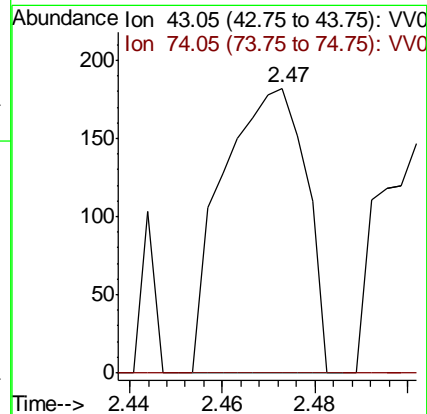
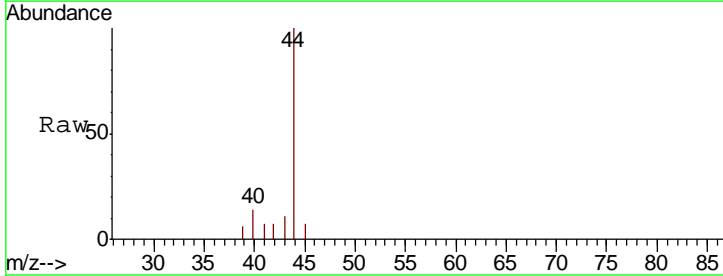
Instrument : MSVOA_V
 ClientSampled : YALS9

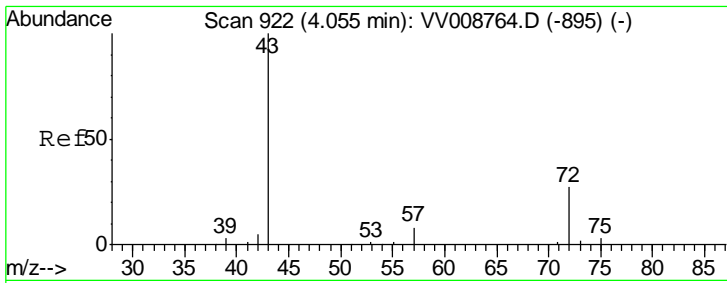
| Tgt Ion | Resp | Lower | Upper |
|---------|------|-------|-------|
| 43 | 100 | | |
| 58 | 26.1 | 0.0 | 59.8 |



#15
 Methyl Acetate
 Concen: 0.316 ug/L
 RT: 2.47 min Scan# 430
 Delta R.T. -0.00 min
 Lab File: VV008777.D
 Acq: 29 Nov 2018 20:53

| Tgt Ion | Resp | Lower | Upper |
|---------|------|-------|-------|
| 43 | 100 | | |
| 74 | 0.0 | 20.0 | 30.0# |

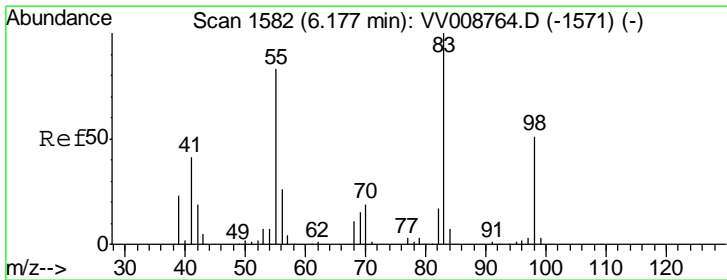
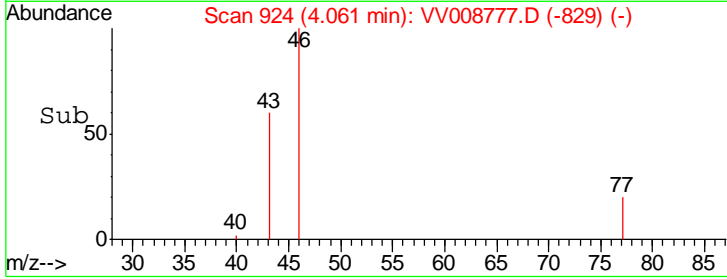
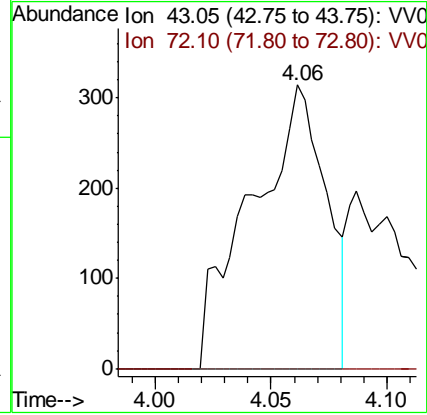
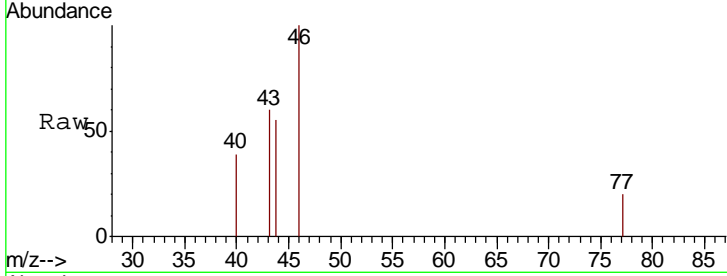




#21
 2-Butanone
 Concen: 1.317 ug/L
 RT: 4.06 min Scan# 924
 Delta R.T. 0.01 min
 Lab File: VV008777.D
 Acq: 29 Nov 2018 20:53

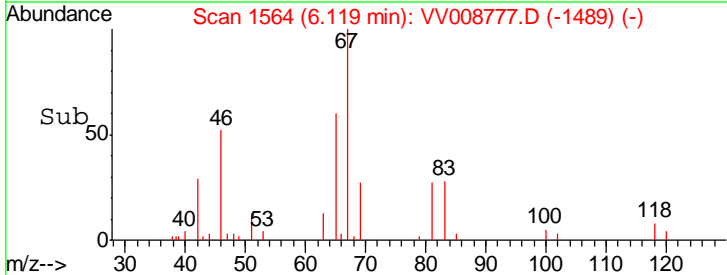
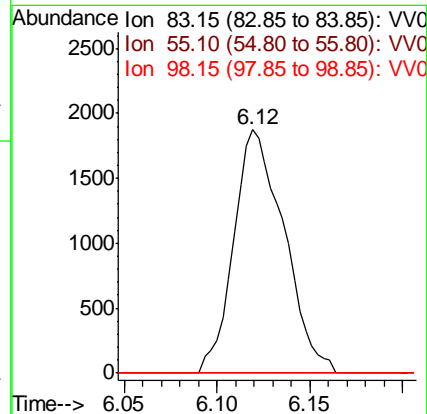
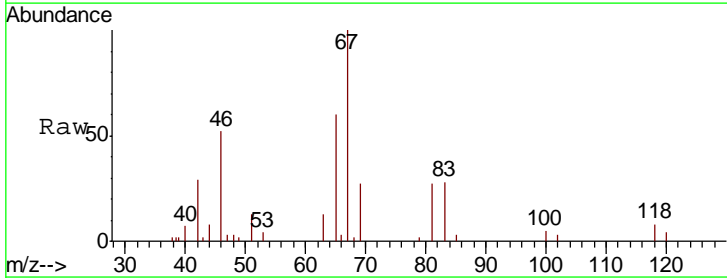
Instrument :
 MSVOA_V
 ClientSampled :
 YALS9

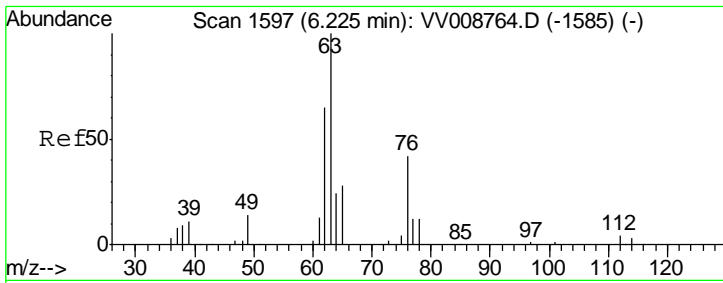
Tgt Ion: 43 Resp: 706
 Ion Ratio Lower Upper
 43 100
 72 0.0 13.6 40.8#



#35
 Methylcyclohexane
 Concen: 0.887 ug/L
 RT: 6.12 min Scan# 1564
 Delta R.T. -0.06 min
 Lab File: VV008777.D
 Acq: 29 Nov 2018 20:53

Tgt Ion: 83 Resp: 3532
 Ion Ratio Lower Upper
 83 100
 55 0.0 60.1 90.1#
 98 5.6 37.4 56.2#

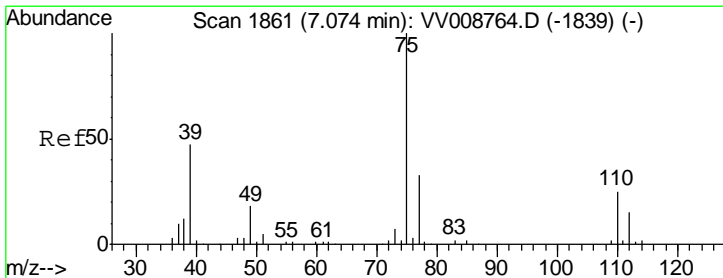
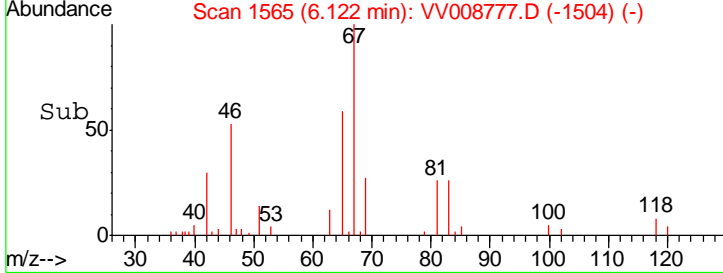
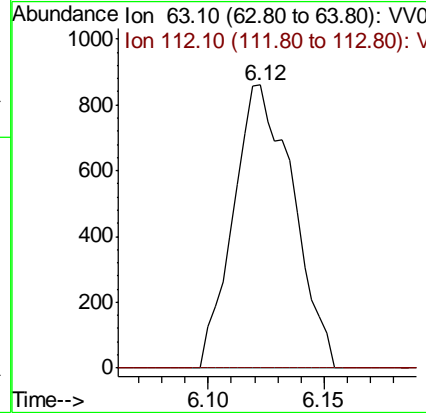
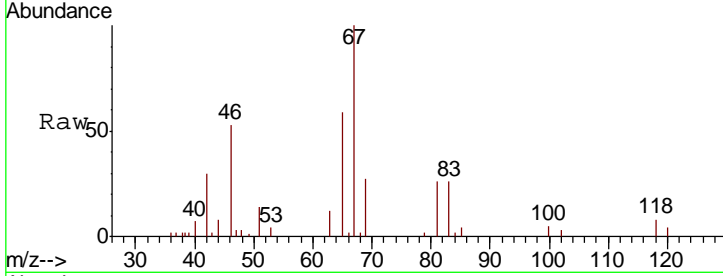




#37
 1,2-Dichloropropane
 Concen: 0.685 ug/L
 RT: 6.12 min Scan# 1565
 Delta R.T. -0.10 min
 Lab File: VV008777.D
 Acq: 29 Nov 2018 20:53

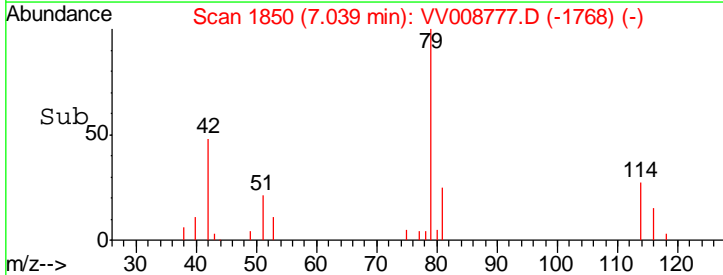
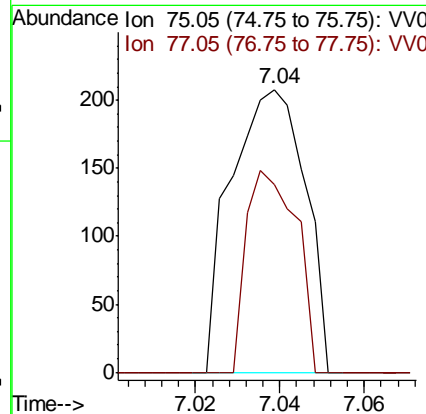
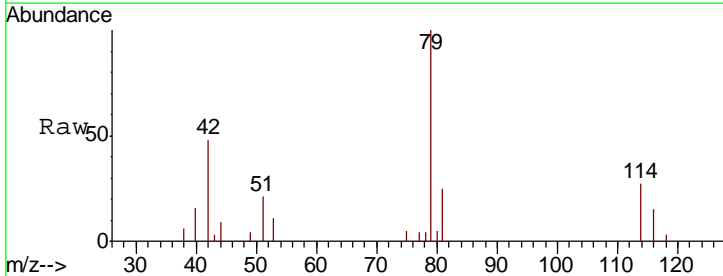
Instrument :
 MSVOA_V
 ClientSampled :
 YALS9

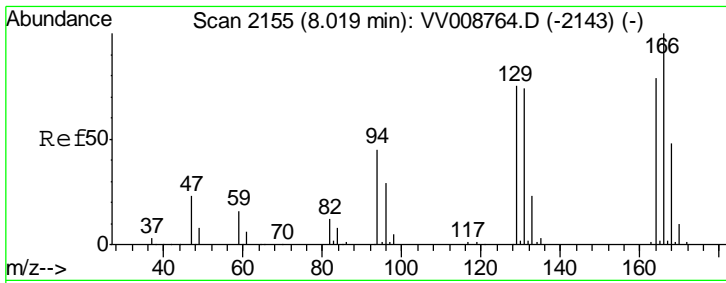
Tgt Ion: 63 Resp: 1539
 Ion Ratio Lower Upper
 63 100
 112 0.0 3.5 5.3#



#39
 cis-1,3-Dichloropropene
 Concen: 0.086 ug/L
 RT: 7.04 min Scan# 1850
 Delta R.T. -0.04 min
 Lab File: VV008777.D
 Acq: 29 Nov 2018 20:53

Tgt Ion: 75 Resp: 253
 Ion Ratio Lower Upper
 75 100
 77 66.3 22.8 42.4#

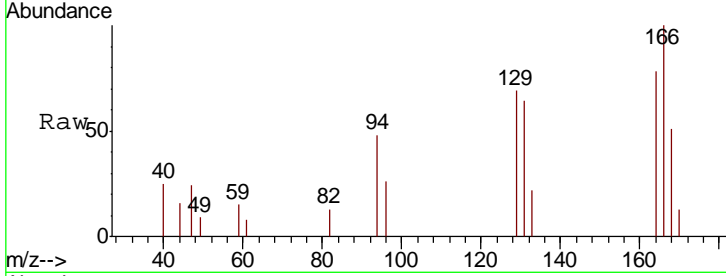




#47

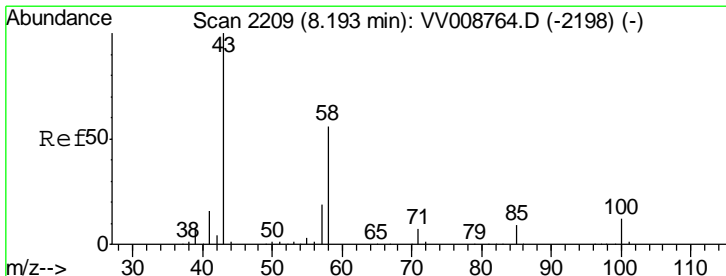
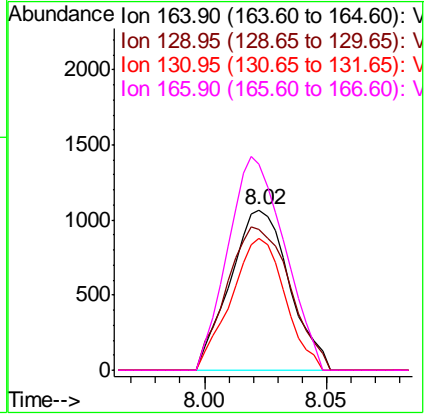
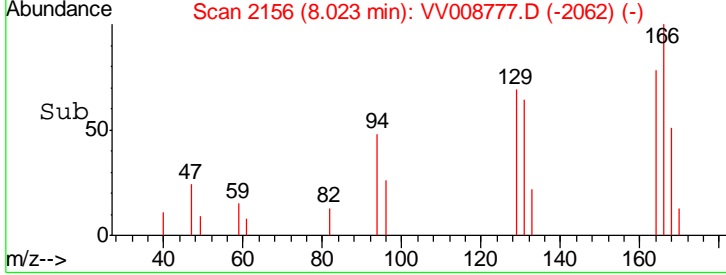
Tetrachloroethene
 Concen: 0.923 ug/L
 RT: 8.02 min Scan# 2156
 Delta R.T. 0.00 min
 Lab File: VV008777.D
 Acq: 29 Nov 2018 20:53

Instrument : MSVOA_V
 ClientSampled : YALS9



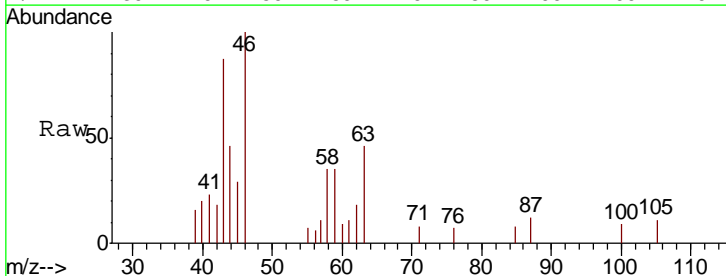
Tgt Ion: 164 Resp: 1793

| Ion | Ratio | Lower | Upper |
|-----|-------|-------|-------|
| 164 | 100 | | |
| 129 | 88.2 | 67.5 | 125.3 |
| 131 | 82.0 | 65.9 | 122.5 |
| 166 | 128.3 | 89.2 | 165.6 |



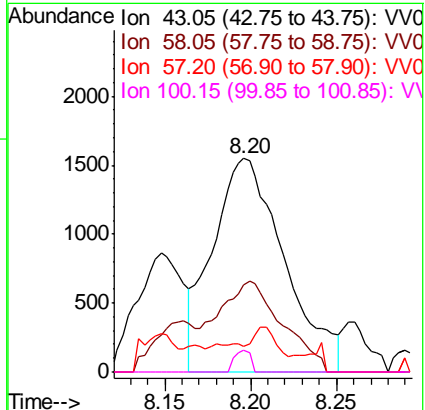
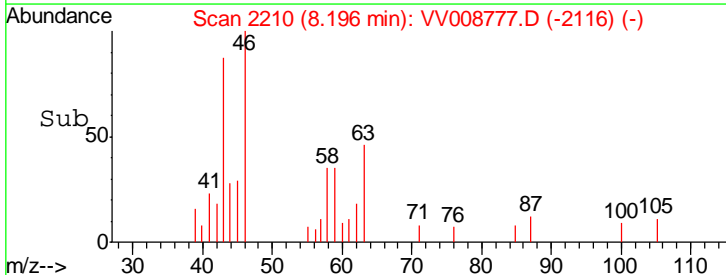
#48

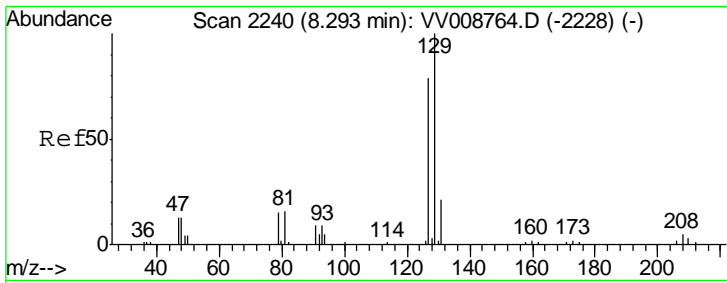
2-Hexanone
 Concen: 5.537 ug/L
 RT: 8.20 min Scan# 2210
 Delta R.T. 0.00 min
 Lab File: VV008777.D
 Acq: 29 Nov 2018 20:53



Tgt Ion: 43 Resp: 4517

| Ion | Ratio | Lower | Upper |
|-----|-------|-------|-------|
| 43 | 100 | | |
| 58 | 37.6 | 44.5 | 66.7# |
| 57 | 8.4 | 15.2 | 22.8# |
| 100 | 2.3 | 9.6 | 14.4# |





#49
 Dibromochloromethane
 Concen: 1.035 ug/L
 RT: 8.02 min Scan# 2155
 Delta R.T. -0.27 min
 Lab File: VV008777.D
 Acq: 29 Nov 2018 20:53

Instrument :
 MSVOA_V
 ClientSampled :
 YALS9

Tgt Ion:129 Resp: 1678
 Ion Ratio Lower Upper
 129 100
 127 0.0 55.3 102.7#

