

Data Path : Z:\VOASRV\HPCHEM1\MSVOA\_V\DATA\VV112918\  
 Data File : VV008776.D  
 Acq On : 29 Nov 2018 20:27  
 Operator : SY/MD  
 Sample : J6076-17  
 Misc : 25.0 mL/MSVOA\_V/WATER  
 ALS Vial : 18 Sample Multiplier: 1

Instrument :  
 MSVOA\_V  
 ClientSampleId :  
 YALS8

Integration Parameters: rteint.p  
 Integrator: RTE  
 Smoothing : ON Filtering: 5  
 Sampling : 1 Min Area: 3 % of largest Peak  
 Start Thrs: 0.1 Max Peaks: 100  
 Stop Thrs : 0 Peak Location: TOP

If leading or trailing edge < 100 prefer < Baseline drop else tangent >  
 Peak separation: 5

Method : Z:\VOASRV\HPCHEM1\MSVOA\_V\METHOD\SOMVTR112918WMA.M  
 Title : TRACE VOA SOM01.0

Signal : TIC

peak #	R.T. min	first scan	max scan	last scan	PK TY	peak height	corr. area	corr. % max.	% of total
1	1.119	5	9	21	rVB3	11007	13192	2.46%	0.298%
2	1.322	63	72	86	rVB	77423	83886	15.66%	1.896%
3	1.589	147	155	165	rVB	57938	63608	11.88%	1.437%
4	2.135	314	325	336	rBV	128418	181358	33.86%	4.098%
5	2.216	340	350	366	rVB2	11487	28903	5.40%	0.653%
6	3.968	879	895	937	rBV2	57393	192418	35.93%	4.348%
7	4.409	1014	1032	1054	rBV	89870	218145	40.73%	4.929%
8	5.100	1227	1247	1279	rBV2	227449	535585	100.00%	12.103%
9	5.669	1404	1424	1451	rBV	169412	336672	62.86%	7.608%
10	5.949	1501	1511	1523	rVB3	4755	9432	1.76%	0.213%
11	6.122	1549	1565	1586	rBV	123125	245425	45.82%	5.546%
12	7.032	1836	1848	1872	rBV	54513	100740	18.81%	2.276%
13	7.364	1937	1951	1968	rBV	256978	452807	84.54%	10.232%
14	7.666	2034	2045	2059	rBV2	31511	55239	10.31%	1.248%
15	8.019	2142	2155	2171	rVB	126300	212542	39.68%	4.803%
16	8.142	2181	2193	2237	rBV2	206071	471828	88.10%	10.662%
17	8.897	2414	2428	2456	rBV	233247	394688	73.69%	8.919%
18	10.264	2842	2853	2866	rBV	72875	117120	21.87%	2.647%
19	11.299	3163	3175	3203	rVB	197417	350080	65.36%	7.911%
20	11.675	3281	3292	3317	rBV	213342	361648	67.52%	8.172%

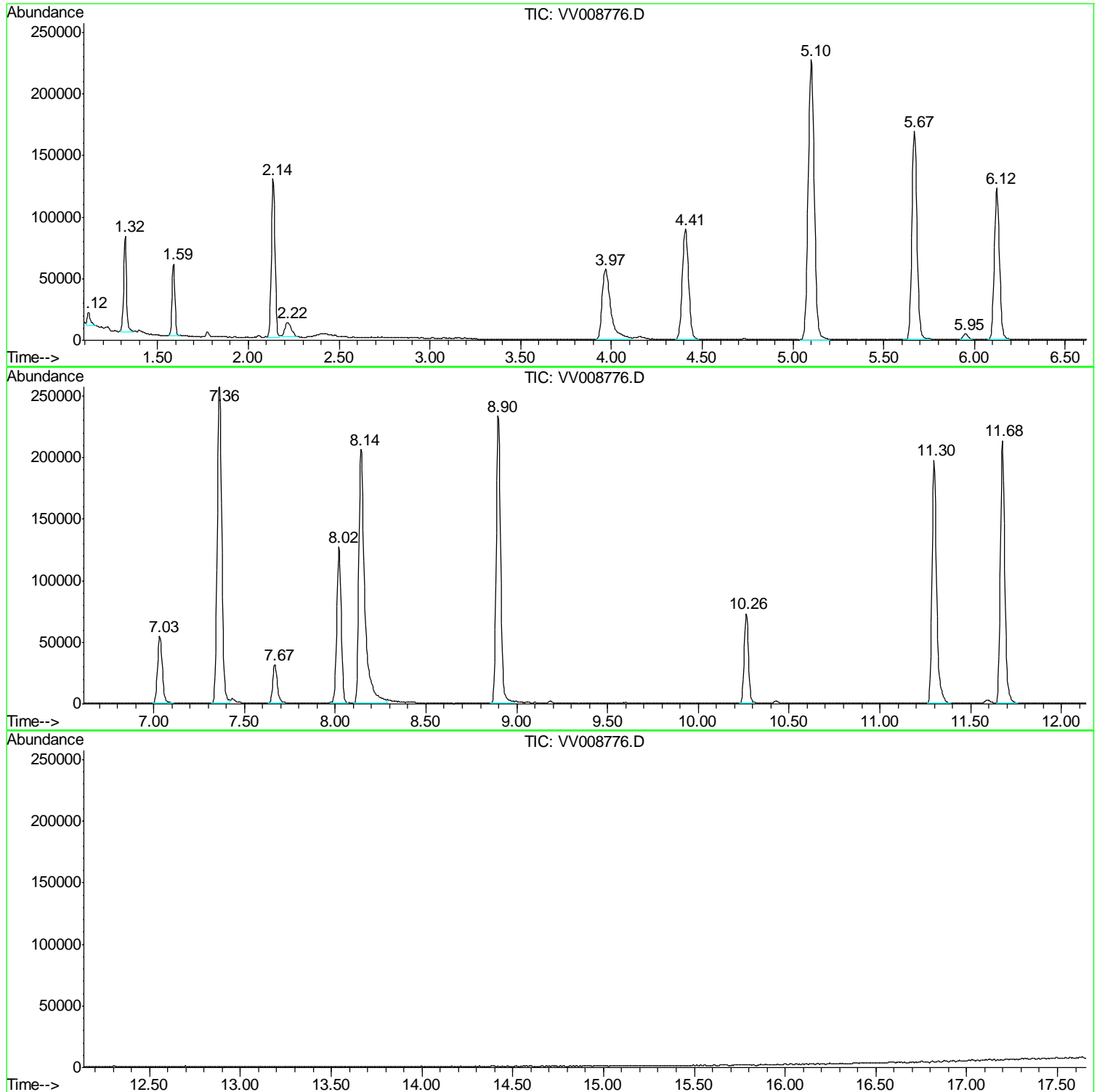
Sum of corrected areas: 4425316

Data Path : Z:\VOASRV\HPCHEM1\MSVOA\_V\DATA\VV112918\  
Data File : VV008776.D  
Acq On : 29 Nov 2018 20:27  
Operator : SY/MD  
Sample : J6076-17  
Misc : 25.0 mL/MSVOA\_V/WATER  
ALS Vial : 18 Sample Multiplier: 1

Instrument :  
MSVOA\_V  
ClientSampled :  
YALS8

Quant Method : Z:\VOASRV\HPCHEM1\MSVOA\_V\METHOD\SOMVTR112918WMA.M  
Quant Title : TRACE VOA SOM01.0

TIC Library : C:\DATABASE\NIST11.L  
TIC Integration Parameters: LSCINT.P



Data Path : Z:\VOASRV\HPCHEM1\MSVOA\_V\DATA\VV112918\  
Data File : VV008776.D  
Acq On : 29 Nov 2018 20:27  
Operator : SY/MD  
Sample : J6076-17  
Misc : 25.0 mL/MSVOA\_V/WATER  
ALS Vial : 18 Sample Multiplier: 1

Instrument :  
MSVOA\_V  
ClientSampleId :  
YALS8

Quant Method : Z:\VOASRV\HPCHEM1\MSVOA\_V\METHOD\SOMVTR112918WMA.M  
Quant Title : TRACE VOA SOM01.0

TIC Library : C:\DATABASE\NIST11.L  
TIC Integration Parameters: LSCINT.P

No Library Search Compounds Detected

\*\*\*\*\*

Data Path : Z:\VOASRV\HPCHEM1\MSVOA\_V\DATA\VV112918\  
Data File : VV008776.D  
Acq On : 29 Nov 2018 20:27  
Operator : SY/MD  
Sample : J6076-17  
Misc : 25.0 mL/MSVOA\_V/WATER  
ALS Vial : 18 Sample Multiplier: 1

Instrument :  
MSVOA\_V  
ClientSampleId :  
YALS8

Quant Method : Z:\VOASRV\HPCHEM1\MSVOA\_V\METHOD\SOMVTR112918WMA.M  
Quant Title : TRACE VOA SOM01.0

TIC Library : C:\DATABASE\NIST11.L  
TIC Integration Parameters: LSCINT.P

TIC Top Hit name	RT	EstConc	Units	Response	--Internal Standard--			
					#	RT	Resp	Conc

---