

Data Path : Z:\VOASRV\HPCHEM1\MSVOA V\DATA\VV113018\
 Data File : VV008816.D
 Acq On : 30 Nov 2018 16:31
 Operator : SY/MD
 Sample : J6155-07MS
 Misc : 25.0 mL/MSVOA V/WATER
 ALS Vial : 14 Sample Multiplier: 1

Instrument :
 MSVOA_V
 ClientSampleId :
 A4178MS

Quant Time: Dec 01 05:24:32 2018
 Quant Method : Z:\VOASRV\HPCHEM1\MSVOA_V\METHOD\SOMVTR112918WMA.M
 Quant Title : TRACE VOA SOM01.0
 QLast Update : Sat Dec 01 03:50:55 2018
 Response via : Initial Calibration

Internal Standards	R.T.	QIon	Response	Conc	Units	Dev(Min)
1) 1,4-Difluorobenzene	5.67	114	141526	5.00	ug/L	0.00
28) Chlorobenzene-d5	8.90	117	130808	5.00	ug/L	0.00
60) 1,4-Dichlorobenzene-d4	11.30	152	58287	5.00	ug/L	0.00

System Monitoring Compounds

4) Vinyl Chloride-d3	1.32	65	43003	4.40	ug/L	0.00
Spiked Amount	5.000	Range	40 - 130	Recovery	=	88.00%
7) Chloroethane-d5	1.59	69	30385	4.37	ug/L	0.00
Spiked Amount	5.000	Range	65 - 130	Recovery	=	87.40%
11) 1,1-Dichloroethene-d2	2.14	63	82010	4.87	ug/L	0.00
Spiked Amount	5.000	Range	60 - 125	Recovery	=	97.40%
20) 2-Butanone-d5	3.96	46	114746	52.32	ug/L	0.00
Spiked Amount	50.000	Range	40 - 130	Recovery	=	104.64%
24) Chloroform-d	4.41	84	95937	4.95	ug/L	0.00
Spiked Amount	5.000	Range	70 - 125	Recovery	=	99.00%
26) 1,2-Dichloroethane-d4	5.09	65	48921	5.27	ug/L	0.00
Spiked Amount	5.000	Range	70 - 130	Recovery	=	105.40%
32) Benzene-d6	5.10	84	201657	5.05	ug/L	0.00
Spiked Amount	5.000	Range	70 - 125	Recovery	=	101.00%
36) 1,2-Dichloropropane-d6	6.12	67	59132	4.93	ug/L	0.00
Spiked Amount	5.000	Range	60 - 140	Recovery	=	98.60%
41) Toluene-d8	7.36	98	178142	4.83	ug/L	0.00
Spiked Amount	5.000	Range	70 - 130	Recovery	=	96.60%
43) trans-1,3-Dichloropropene-	7.67	79	19379	4.82	ug/L	0.00
Spiked Amount	5.000	Range	55 - 130	Recovery	=	96.40%
46) 2-Hexanone-d5	8.14	63	83438	49.82	ug/L	0.00
Spiked Amount	50.000	Range	45 - 130	Recovery	=	99.64%
57) 1,1,2,2-Tetrachloroethane-	10.26	84	37335	4.92	ug/L	0.00
Spiked Amount	5.000	Range	65 - 120	Recovery	=	98.40%
64) 1,2-Dichlorobenzene-d4	11.68	152	64241	5.36	ug/L	0.00
Spiked Amount	5.000	Range	80 - 120	Recovery	=	107.20%

Target Compounds

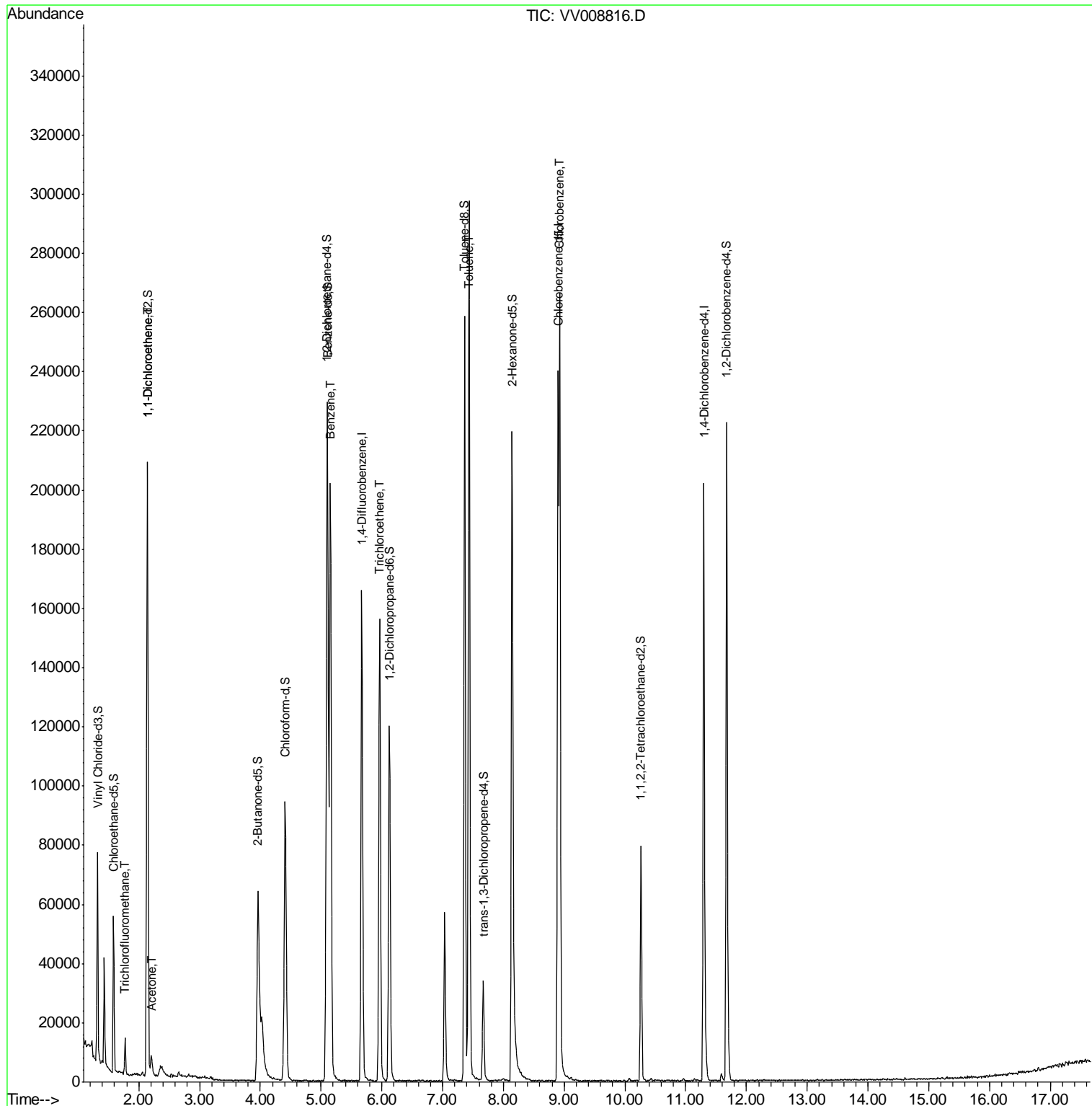
Target Compounds	R.T.	QIon	Response	Conc	Units	Ovalue
9) Trichlorofluoromethane	1.78	101	6328	0.454	ug/L	95
12) 1,1-Dichloroethene	2.15	96	36979	5.313	ug/L	88
13) Acetone	2.21	43	7484	6.848	ug/L	100
33) Benzene	5.15	78	201999	5.150	ug/L	100
34) Trichloroethene	5.96	95	54151	4.965	ug/L	97
42) Toluene	7.43	91	219294	5.341	ug/L	99
51) Chlorobenzene	8.93	112	138686	5.131	ug/L	99

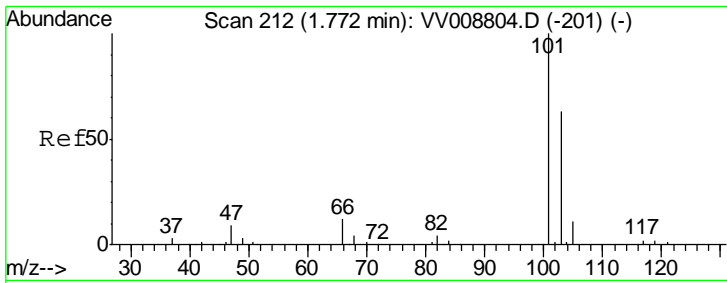
(#) = qualifier out of range (m) = manual integration (+) = signals summed

Data Path : Z:\VOASRV\HPCHEM1\MSVOA V\DATA\VV113018\
 Data File : VV008816.D
 Acq On : 30 Nov 2018 16:31
 Operator : SY/MD
 Sample : J6155-07MS
 Misc : 25.0 mL/MSVOA V/WATER
 ALS Vial : 14 Sample Multiplier: 1

Instrument :
 MSVOA_V
 ClientSampleId :
 A4178MS

Quant Time: Dec 01 05:24:32 2018
 Quant Method : Z:\VOASRV\HPCHEM1\MSVOA_V\METHOD\SOMVTR112918WMA.M
 Quant Title : TRACE VOA SOM01.0
 QLast Update : Sat Dec 01 03:50:55 2018
 Response via : Initial Calibration



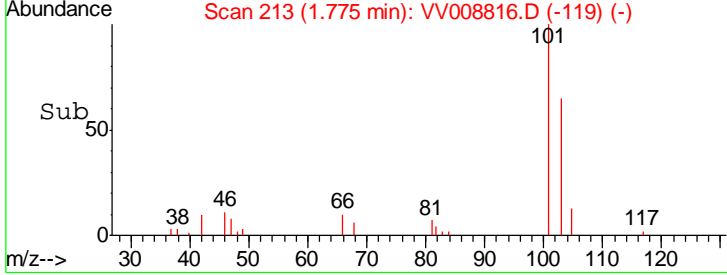
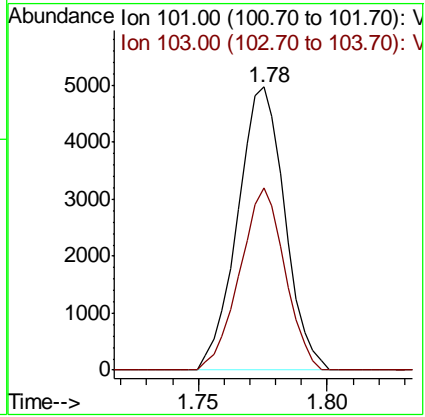
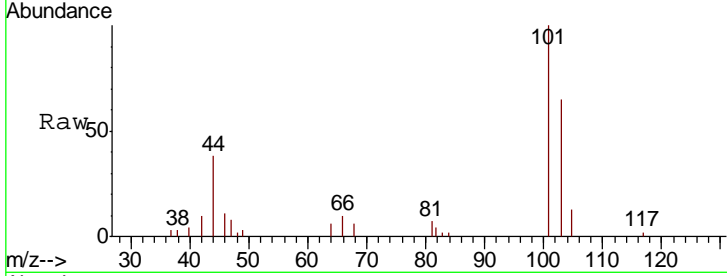


#9
 Trichlorofluoromethane
 Concen: 0.454 ug/L
 RT: 1.78 min Scan# 213
 Delta R.T. 0.00 min
 Lab File: VV008816.D
 Acq: 30 Nov 2018 16:31

Instrument :
 MSVOA_V
ClientSampled :
 A4178MS

Tgt Ion: 101 Resp: 6328

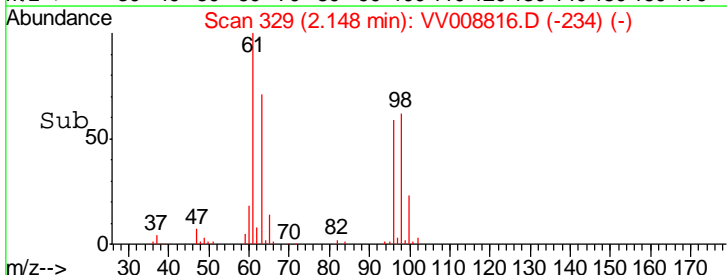
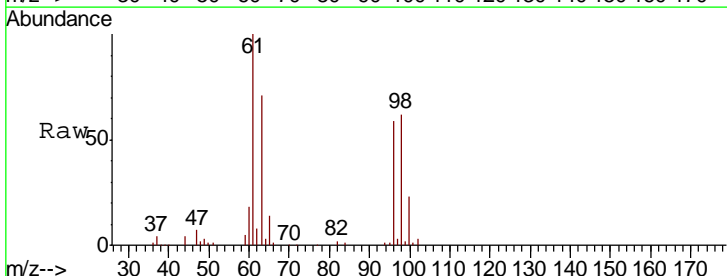
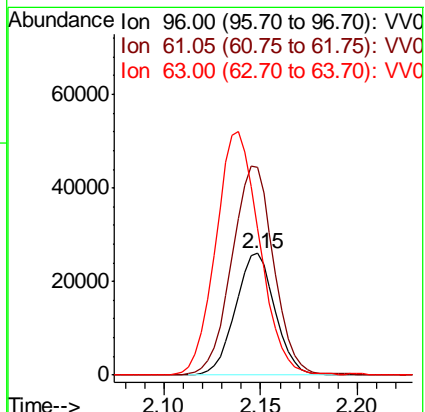
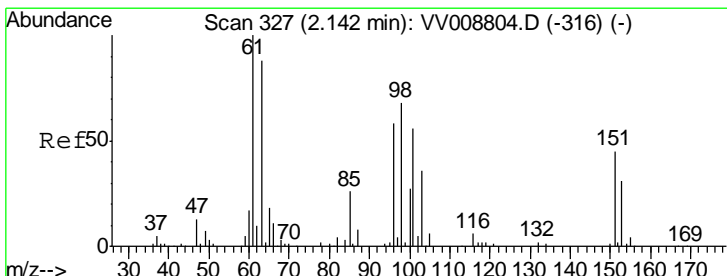
Ion	Ratio	Lower	Upper
101	100		
103	61.5	52.6	79.0

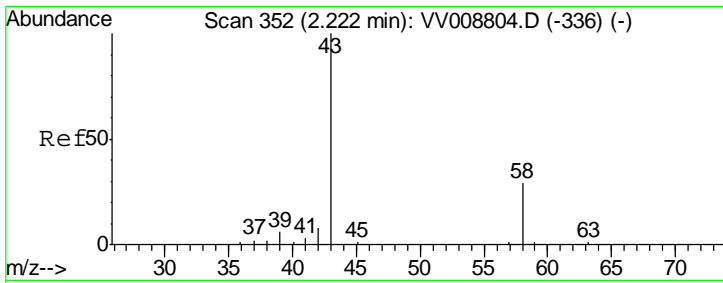


#12
 1,1-Dichloroethene
 Concen: 5.313 ug/L
 RT: 2.15 min Scan# 329
 Delta R.T. 0.01 min
 Lab File: VV008816.D
 Acq: 30 Nov 2018 16:31

Tgt Ion: 96 Resp: 36979

Ion	Ratio	Lower	Upper
96	100		
61	170.4	124.3	230.8
63	120.6	102.6	190.5



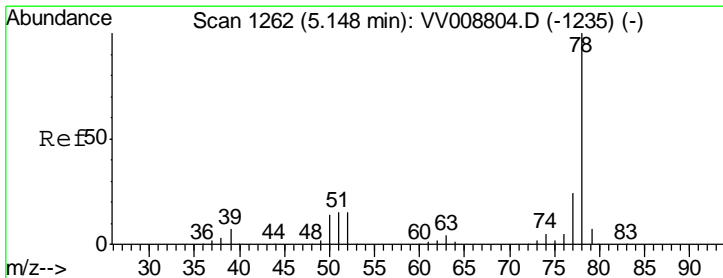
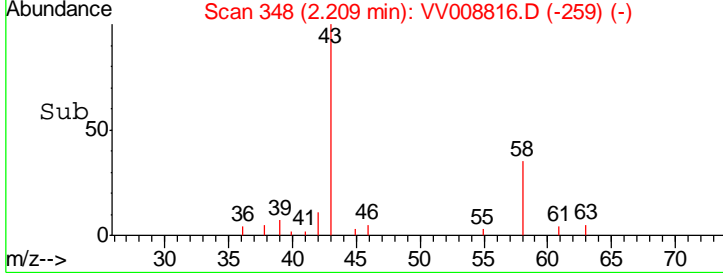
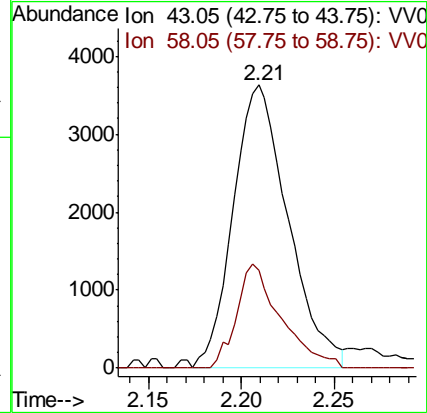
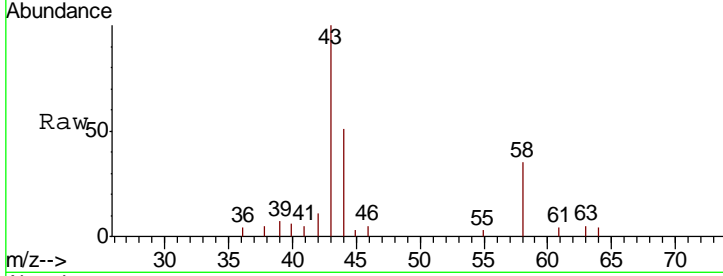


#13
 Acetone
 Concen: 6.848 ug/L
 RT: 2.21 min Scan# 348
 Delta R.T. -0.01 min
 Lab File: VV008816.D
 Acq: 30 Nov 2018 16:31

Instrument :
 MSVOA_V
 ClientSampled :
 A4178MS

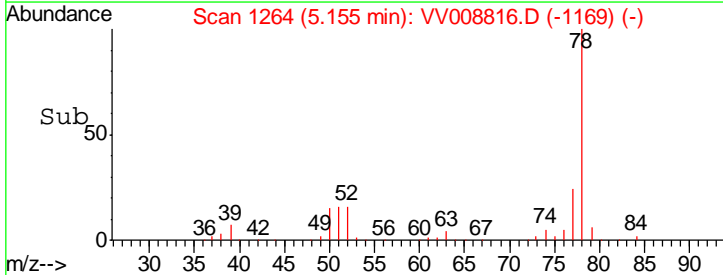
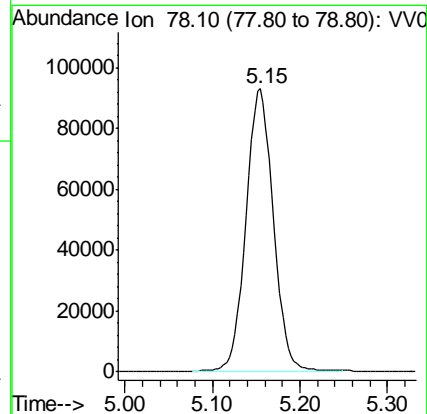
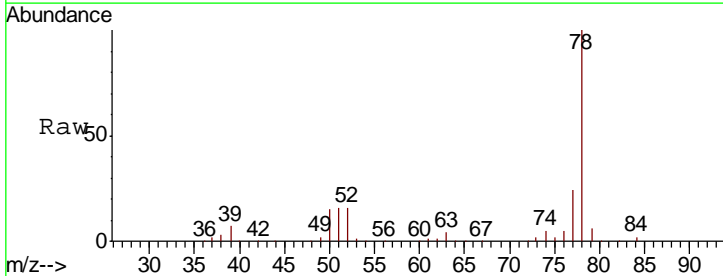
Tgt Ion: 43 Resp: 7484

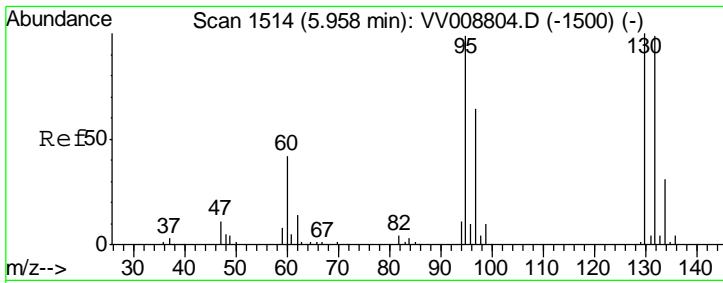
Ion	Ratio	Lower	Upper
43	100		
58	29.6	0.0	59.8



#33
 Benzene
 Concen: 5.150 ug/L
 RT: 5.15 min Scan# 1264
 Delta R.T. 0.01 min
 Lab File: VV008816.D
 Acq: 30 Nov 2018 16:31

Tgt Ion: 78 Resp: 201999

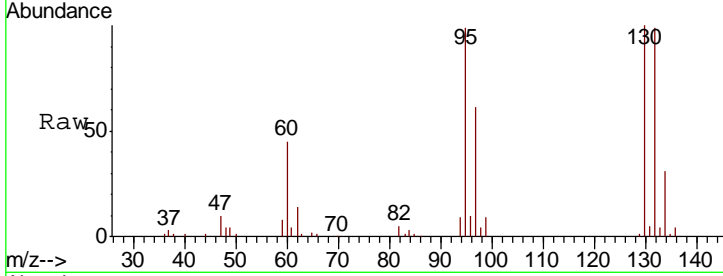




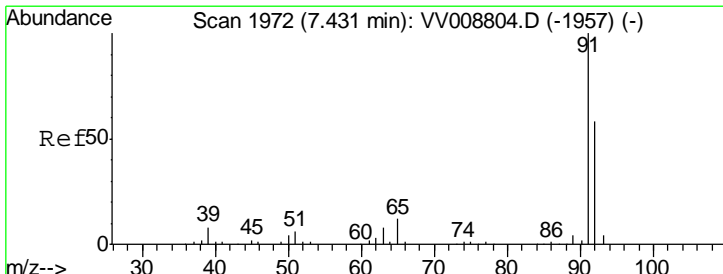
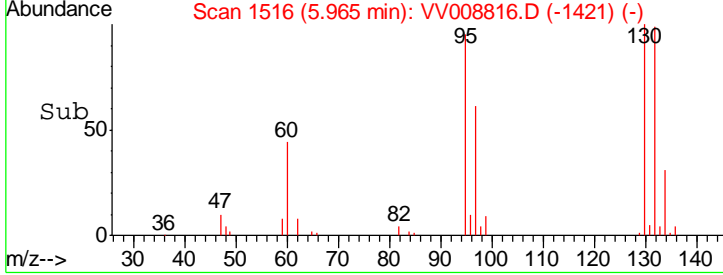
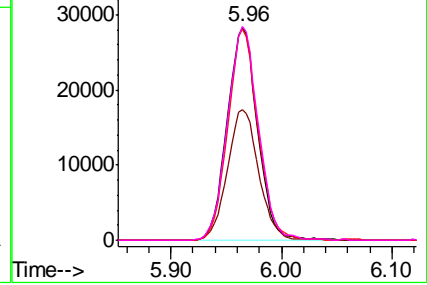
#34
 Trichloroethene
 Concen: 4.965 ug/L
 RT: 5.96 min Scan# 1516
 Delta R.T. 0.01 min
 Lab File: VV008816.D
 Acq: 30 Nov 2018 16:31

Instrument : MSVOA_V
 ClientSampled : A4178MS

Tgt Ion	Resp	Lower	Upper
95	54151		
97	61.5	46.5	86.3
132	99.4	69.4	128.8
130	100.5	73.1	135.8

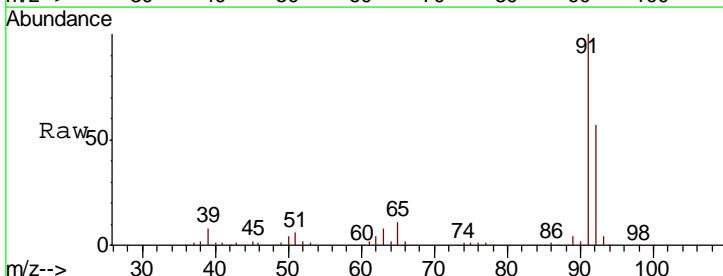


Abundance
 Ion 95.00 (94.70 to 95.70): VV008816.D (-1421) (-)
 Ion 96.95 (96.65 to 97.65): VV008816.D (-1421) (-)
 Ion 131.95 (131.65 to 132.65): VV008816.D (-1421) (-)
 Ion 129.95 (129.65 to 130.65): VV008816.D (-1421) (-)

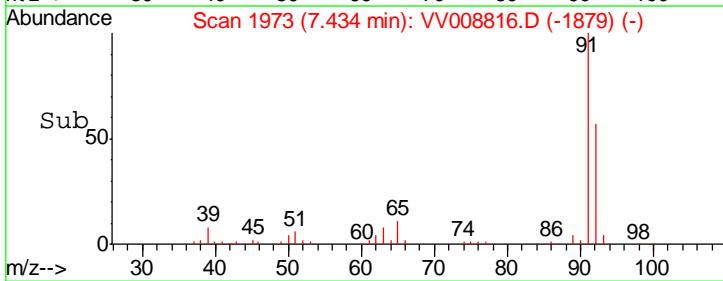
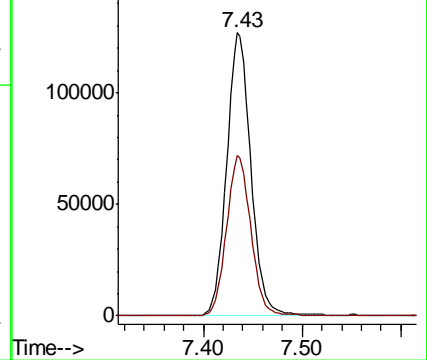


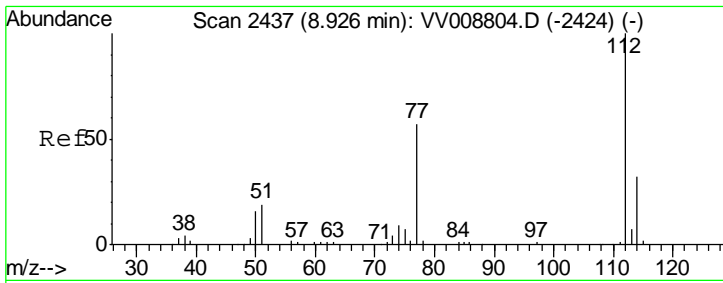
#42
 Toluene
 Concen: 5.341 ug/L
 RT: 7.43 min Scan# 1973
 Delta R.T. 0.00 min
 Lab File: VV008816.D
 Acq: 30 Nov 2018 16:31

Tgt Ion	Resp	Lower	Upper
91	219294		
92	56.8	40.5	75.3



Abundance
 Ion 91.15 (90.85 to 91.85): VV008816.D (-1879) (-)
 Ion 92.15 (91.85 to 92.85): VV008816.D (-1879) (-)





#51
 Chlorobenzene
 Concen: 5.131 ug/L
 RT: 8.93 min Scan# 2438
 Delta R.T. 0.00 min
 Lab File: VV008816.D
 Acq: 30 Nov 2018 16:31

Instrument :
 MSVOA_V
 ClientSampled :
 A4178MS

Tot Ion: 112 Resp: 138686

Ion	Ratio	Lower	Upper
112	100		
114	33.0	22.8	42.4
77	57.4	46.2	69.4

