

Data File : VV008842.D  
 Acq On : 05 Dec 2018 15:34  
 Operator : SY/MD  
 Sample : J6155-15  
 Misc : 25.0 mL/MSVOA\_V/WATER  
 ALS Vial : 9 Sample Multiplier: 1

Instrument :  
 MSVOA\_V  
 ClientSampleId :  
 A4130

Quant Time: Dec 06 04:59:01 2018  
 Quant Method : Z:\VOASRV\HPCHEM1\MSVOA\_V\METHOD\SOMVTR120518WMA.M  
 Quant Title : TRACE VOA SOM01.0  
 QLast Update : Thu Dec 06 04:51:41 2018  
 Response via : Initial Calibration

Internal Standards	R.T.	QIon	Response	Conc	Units	Dev(Min)
1) 1,4-Difluorobenzene	5.67	114	118803	5.00	ug/L	0.00
28) Chlorobenzene-d5	8.90	117	110759	5.00	ug/L	0.00
60) 1,4-Dichlorobenzene-d4	11.30	152	54806	5.00	ug/L	0.00

System Monitoring Compounds

4) Vinyl Chloride-d3	1.32	65	28225	4.46	ug/L	0.00
Spiked Amount	5.000	Range	40 - 130	Recovery	=	89.20%
7) Chloroethane-d5	1.59	69	22273	4.76	ug/L	0.00
Spiked Amount	5.000	Range	65 - 130	Recovery	=	95.20%
11) 1,1-Dichloroethene-d2	2.14	63	59425	4.87	ug/L	0.00
Spiked Amount	5.000	Range	60 - 125	Recovery	=	97.40%
20) 2-Butanone-d5	3.98	46	77649	49.62	ug/L	0.00
Spiked Amount	50.000	Range	40 - 130	Recovery	=	99.24%
24) Chloroform-d	4.40	84	69712	4.74	ug/L	0.00
Spiked Amount	5.000	Range	70 - 125	Recovery	=	94.80%
26) 1,2-Dichloroethane-d4	5.09	65	33849	4.86	ug/L	0.00
Spiked Amount	5.000	Range	70 - 130	Recovery	=	97.20%
32) Benzene-d6	5.10	84	137527	4.75	ug/L	0.00
Spiked Amount	5.000	Range	70 - 125	Recovery	=	95.00%
36) 1,2-Dichloropropane-d6	6.12	67	41423	4.87	ug/L	0.00
Spiked Amount	5.000	Range	60 - 140	Recovery	=	97.40%
41) Toluene-d8	7.36	98	127058	4.64	ug/L	0.00
Spiked Amount	5.000	Range	70 - 130	Recovery	=	92.80%
43) trans-1,3-Dichloropropene-	7.67	79	14221	4.43	ug/L	0.00
Spiked Amount	5.000	Range	55 - 130	Recovery	=	88.60%
46) 2-Hexanone-d5	8.14	63	58434	47.79	ug/L	0.00
Spiked Amount	50.000	Range	45 - 130	Recovery	=	95.58%
57) 1,1,2,2-Tetrachloroethane-	10.26	84	26667	4.68	ug/L	0.00
Spiked Amount	5.000	Range	65 - 120	Recovery	=	93.60%
64) 1,2-Dichlorobenzene-d4	11.68	152	46092	4.57	ug/L	0.00
Spiked Amount	5.000	Range	80 - 120	Recovery	=	91.40%

Target Compounds

						Qvalue
2) Dichlorodifluoromethane	1.14	85	23106	2.047	ug/L	99
3) Chloromethane	1.25	50	46395	6.204	ug/L	97
5) Vinyl chloride	1.32	62	35903	4.712	ug/L	99
6) Bromomethane	1.54	94	23029	5.156	ug/L	98
8) Chloroethane	1.60	64	18864	4.407	ug/L	99
9) Trichlorofluoromethane	1.77	101	109078	8.883	ug/L	99
10) 1,1,2-Trichloro-1,2,2-trif	2.14	101	27257	4.080	ug/L	96
12) 1,1-Dichloroethene	2.14	96	32455	5.576	ug/L	95
16) Methylene chloride	2.54	84	20508	3.262	ug/L	96
17) Methyl tert-butyl Ether	2.81	73	74632	5.222	ug/L	99
18) trans-1,2-Dichloroethene	2.79	96	40097	6.302	ug/L	89
22) cis-1,2-Dichloroethene	3.96	96	54181	6.221	ug/L	97
23) Bromochloromethane	4.31	128	7742	2.101	ug/L	98
25) Chloroform	4.43	83	68745	4.561	ug/L	97
27) 1,2-Dichloroethane	5.18	62	42812	4.977	ug/L	98
29) 1,1,1-Trichloroethane	4.66	97	67236	5.126	ug/L	98
31) Carbon tetrachloride	4.87	117	59192	5.013	ug/L	96

Data File : VV008842.D  
Acq On : 05 Dec 2018 15:34  
Operator : SY/MD  
Sample : J6155-15  
Misc : 25.0 mL/MSVOA\_V/WATER  
ALS Vial : 9 Sample Multiplier: 1

Instrument :  
MSVOA\_V  
ClientSampleId :  
A4130

Quant Time: Dec 06 04:59:01 2018  
Quant Method : Z:\VOASRV\HPCHEM1\MSVOA\_V\METHOD\SOMVTR120518WMA.M  
Quant Title : TRACE VOA SOM01.0  
QLast Update : Thu Dec 06 04:51:41 2018  
Response via : Initial Calibration

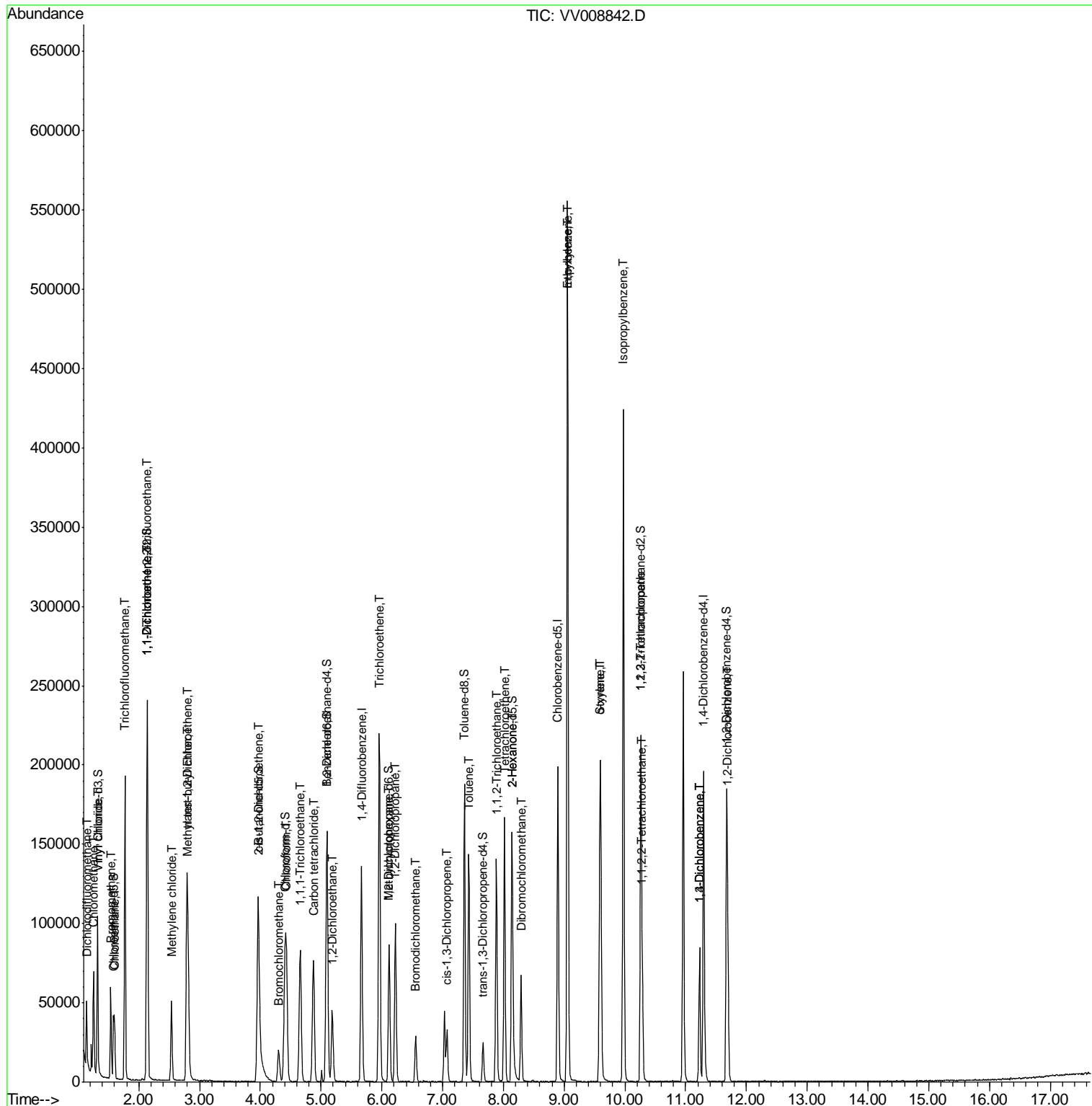
Internal Standards	R.T.	QIon	Response	Conc	Units	Dev(Min)
34) Trichloroethene	5.96	95	75204	8.211	ug/L	99
35) Methylcyclohexane	6.12	83	10347	0.714	ug/L #	19
37) 1,2-Dichloropropane	6.22	63	37736	4.889	ug/L	99
38) Bromodichloromethane	6.56	83	19017	2.002	ug/L	95
39) cis-1,3-Dichloropropene	7.07	75	19193	1.775	ug/L	98
42) Toluene	7.43	91	103780	3.053	ug/L	99
45) 1,1,2-Trichloroethane	7.88	97	44999	8.305	ug/L	97
47) Tetrachloroethene	8.02	164	38232	5.203	ug/L	95
48) 2-Hexanone	8.14	43	7271	2.635	ug/L #	76
49) Dibromochloromethane	8.29	129	35955	5.673	ug/L	98
52) Ethylbenzene	9.05	91	386623	10.418	ug/L	100
53) m,p-xylene	9.06	106	122053	8.609	ug/L #	27
54) o-xylene	9.59	106	41593	3.076	ug/L	100
55) Styrene	9.60	104	71072	3.177	ug/L	100
56) Isopropylbenzene	9.98	105	272341	7.445	ug/L	100
58) 1,1,2,2-Tetrachloroethane	10.29	83	25170	4.603	ug/L	97
59) 1,2,3-Trichloropropane	10.26	75	5620	1.220	ug/L #	1
62) 1,3-Dichlorobenzene	11.23	146	37104	2.094	ug/L	98
63) 1,4-Dichlorobenzene	11.23	146	37104	2.048	ug/L	97
65) 1,2-Dichlorobenzene	11.69	146	33751	2.062	ug/L	95

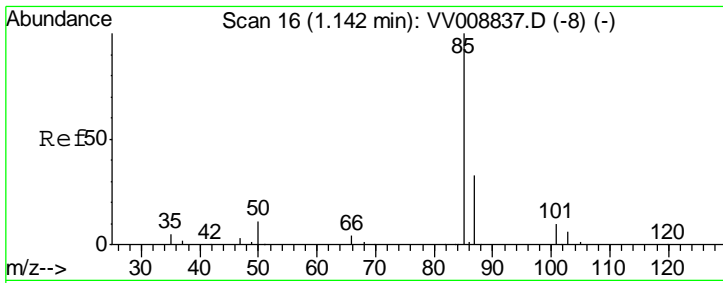
(#) = qualifier out of range (m) = manual integration (+) = signals summed

Data File : VV008842.D  
Acq On : 05 Dec 2018 15:34  
Operator : SY/MD  
Sample : J6155-15  
Misc : 25.0 mL/MSVOA\_V/WATER  
ALS Vial : 9 Sample Multiplier: 1

Instrument :  
MSVOA\_V  
Client Sampled :  
A4130

Quant Time: Dec 06 04:59:01 2018  
Quant Method : Z:\VOASRV\HPCHEM1\MSVOA\_V\METHOD\SOMVTR120518WMA.M  
Quant Title : TRACE VOA SOM01.0  
QLast Update : Thu Dec 06 04:51:41 2018  
Response via : Initial Calibration

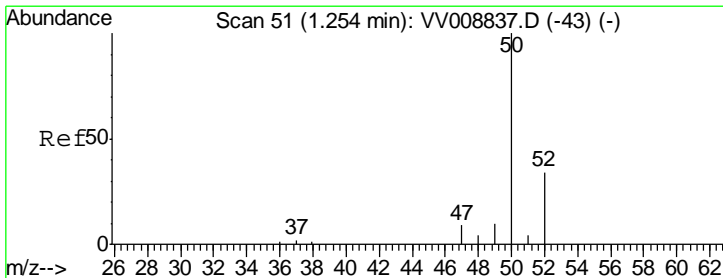
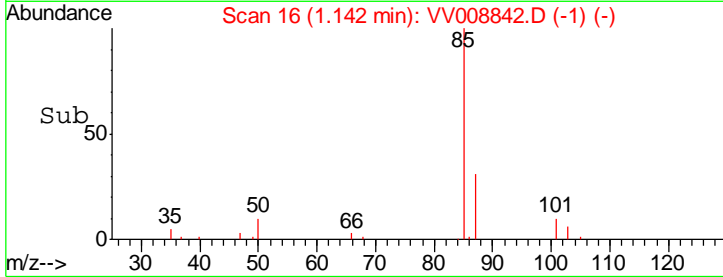
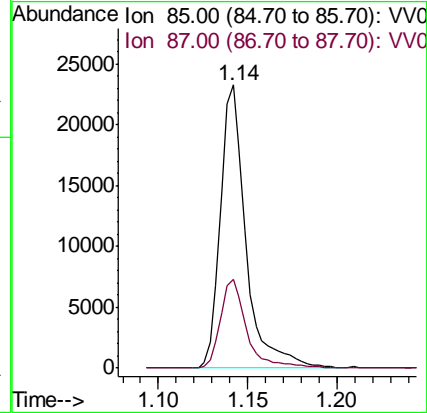
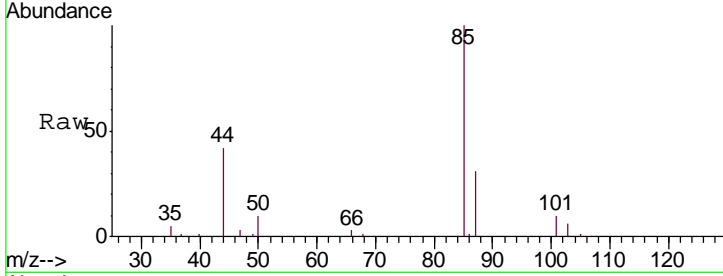




#2  
 Dichlorodifluoromethane  
 Concen: 2.047 ug/L  
 RT: 1.14 min Scan# 16  
 Delta R.T. 0.00 min  
 Lab File: VV008842.D  
 Acq: 05 Dec 2018 15:34

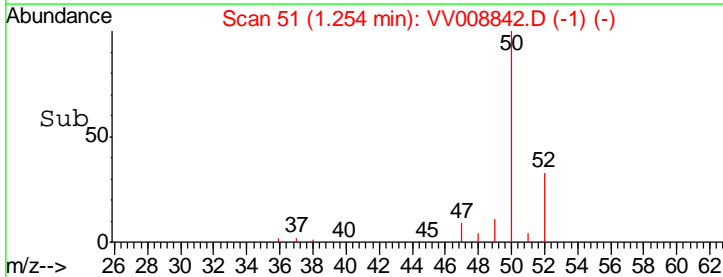
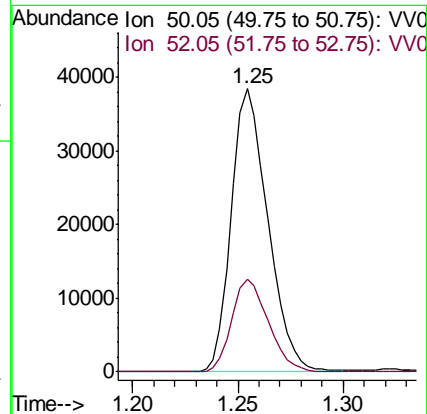
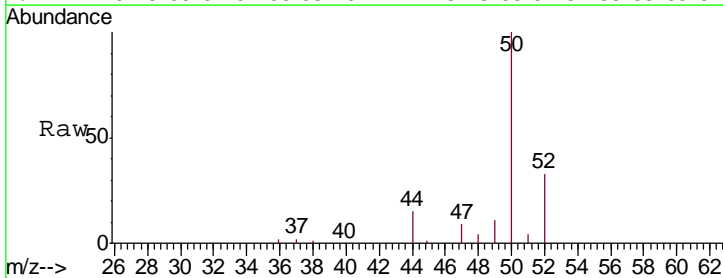
Instrument :  
 MSVOA\_V  
 ClientSampled :  
 A4130

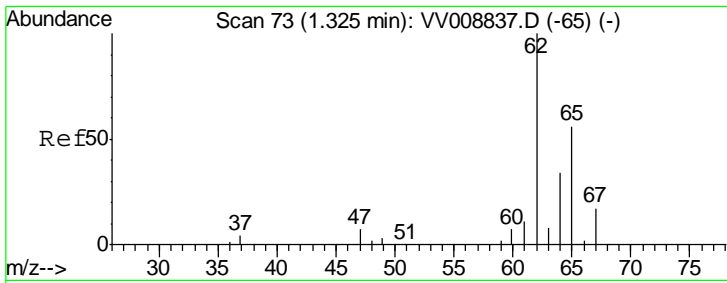
Tgt Ion: 85 Resp: 23106  
 Ion Ratio Lower Upper  
 85 100  
 87 32.1 26.3 39.5



#3  
 Chloromethane  
 Concen: 6.204 ug/L  
 RT: 1.25 min Scan# 51  
 Delta R.T. 0.00 min  
 Lab File: VV008842.D  
 Acq: 05 Dec 2018 15:34

Tgt Ion: 50 Resp: 46395  
 Ion Ratio Lower Upper  
 50 100  
 52 32.7 23.9 44.5

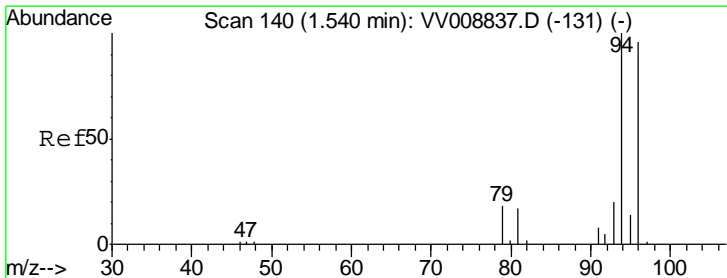
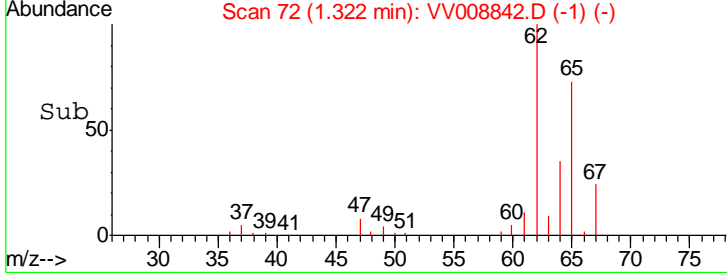
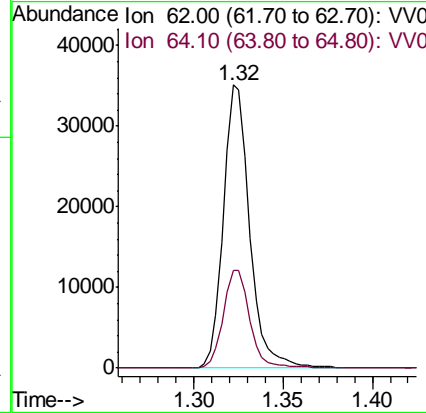
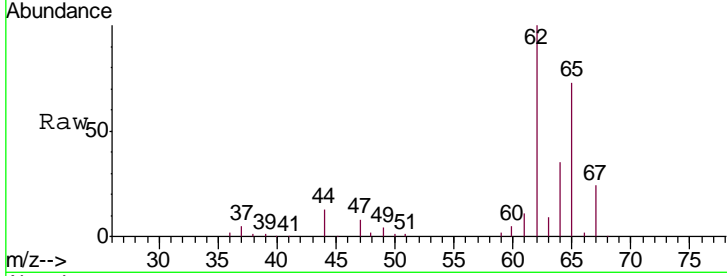




#5  
 Vinyl chloride  
 Concen: 4.712 ug/L  
 RT: 1.32 min Scan# 72  
 Delta R.T. -0.00 min  
 Lab File: VV008842.D  
 Acq: 05 Dec 2018 15:34

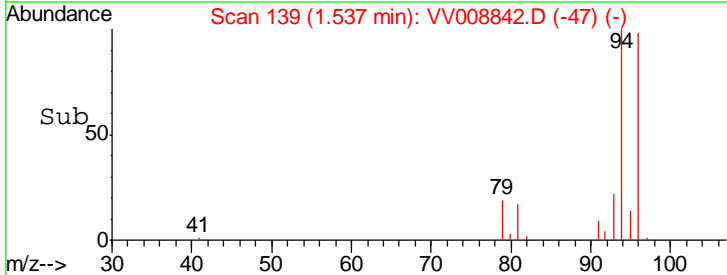
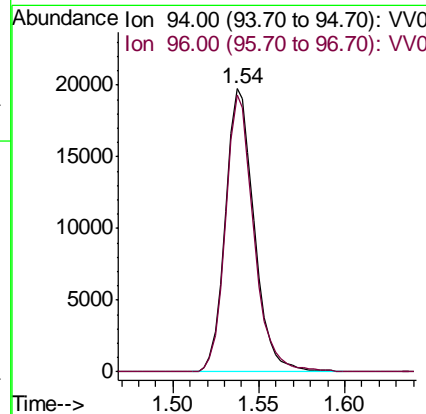
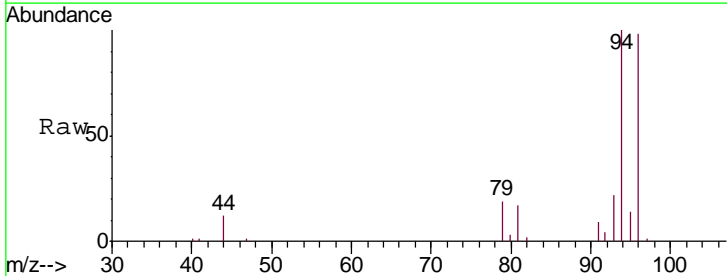
Instrument : MSVOA\_V  
 ClientSampled : A4130

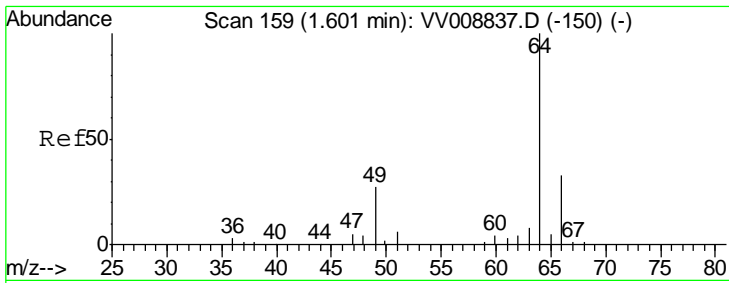
Tgt Ion	Resp	Lower	Upper
62	35903		
62	100		
64	34.6	23.9	44.3



#6  
 Bromomethane  
 Concen: 5.156 ug/L  
 RT: 1.54 min Scan# 139  
 Delta R.T. -0.00 min  
 Lab File: VV008842.D  
 Acq: 05 Dec 2018 15:34

Tgt Ion	Resp	Lower	Upper
94	23029		
94	100		
96	97.8	67.0	124.4

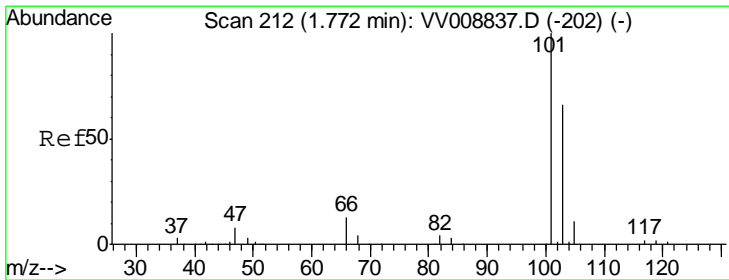
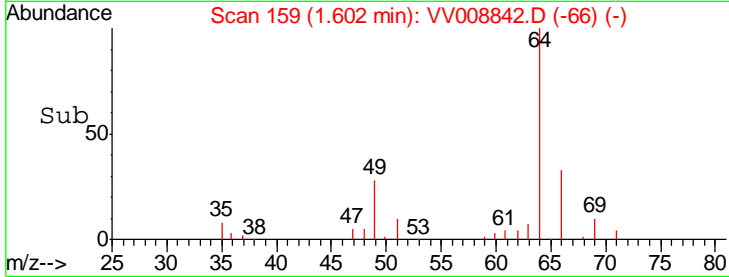
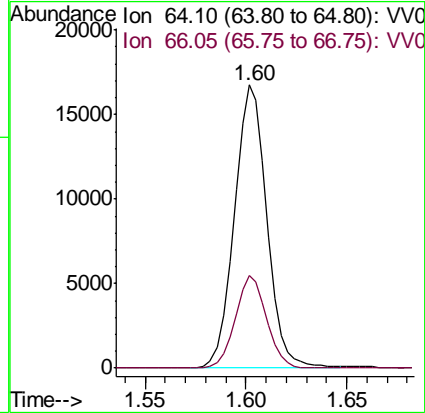
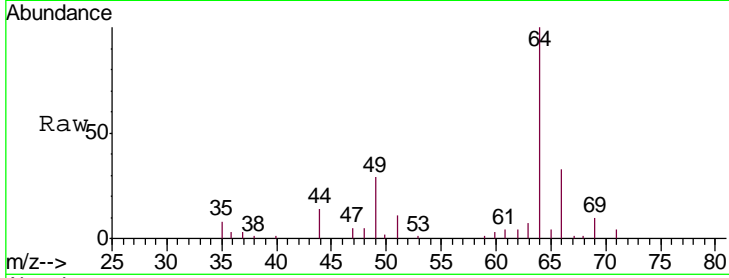




#8  
 Chloroethane  
 Concen: 4.407 ug/L  
 RT: 1.60 min Scan# 159  
 Delta R.T. 0.00 min  
 Lab File: VV008842.D  
 Acq: 05 Dec 2018 15:34

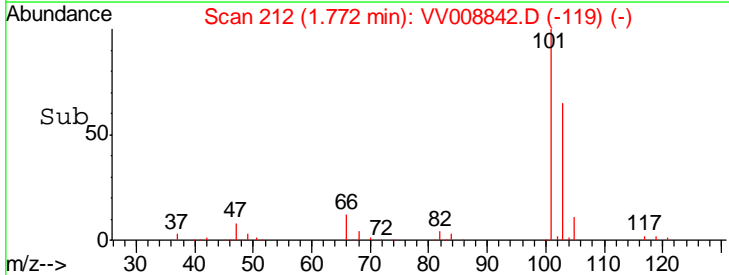
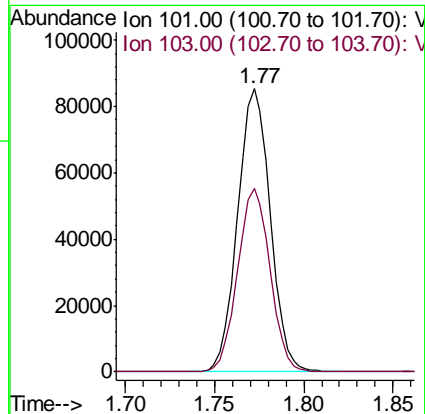
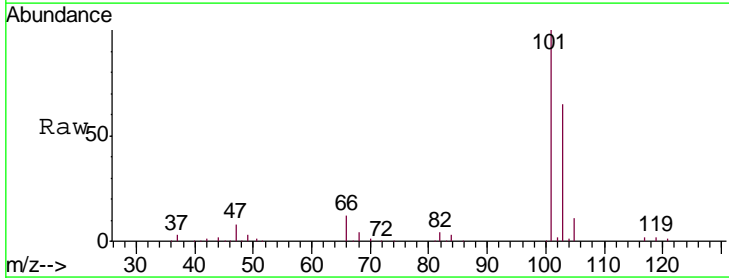
Instrument : MSVOA\_V  
 ClientSampled : A4130

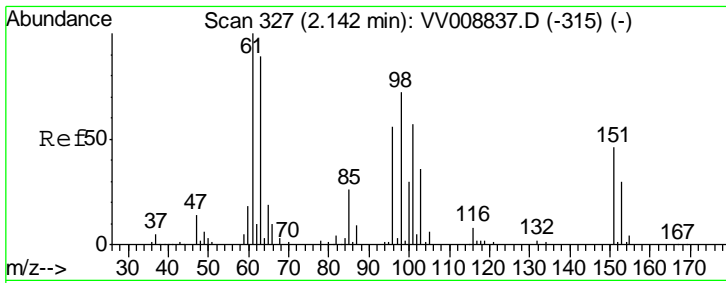
Tgt Ion	Resp	Lower	Upper
64	18864		
66	32.7	23.4	43.6



#9  
 Trichlorofluoromethane  
 Concen: 8.883 ug/L  
 RT: 1.77 min Scan# 212  
 Delta R.T. 0.00 min  
 Lab File: VV008842.D  
 Acq: 05 Dec 2018 15:34

Tgt Ion	Resp	Lower	Upper
101	109078		
103	64.6	52.5	78.7





#10

1,1,2-Trichloro-1,2,2-trifluoroethane

Concen: 4.080 ug/L

RT: 2.14 min Scan# 327

Delta R.T. 0.00 min

Lab File: VV008842.D

Acq: 05 Dec 2018 15:34

Instrument :  
MSVOA\_V  
ClientSampled :  
A4130

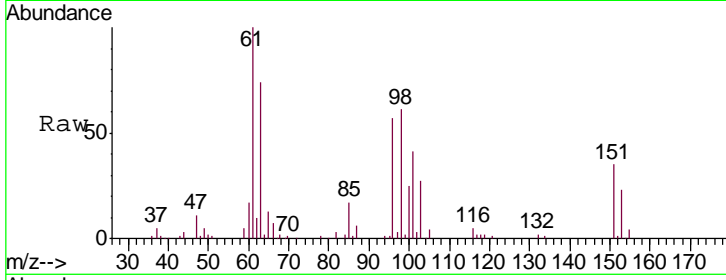
Tgt Ion: 101 Resp: 27257

Ion Ratio Lower Upper

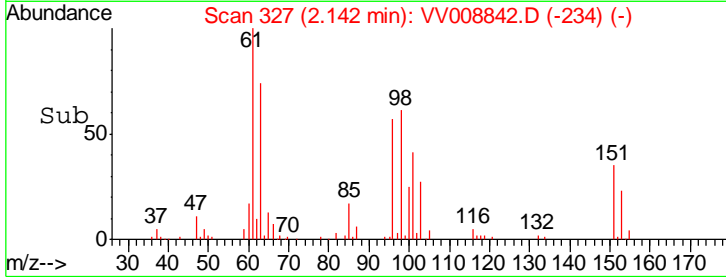
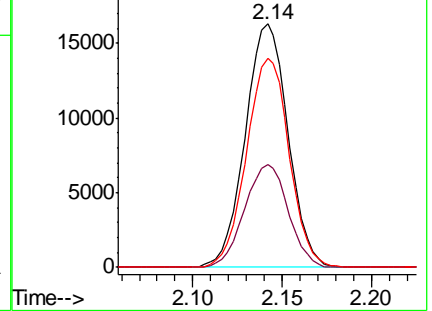
101 100

85 42.9 35.0 52.6

151 85.8 65.1 97.7



Abundance Ion 101.00 (100.70 to 101.70): V  
Ion 85.00 (84.70 to 85.70): VV0  
Ion 151.00 (150.70 to 151.70): V



#12

1,1-Dichloroethene

Concen: 5.576 ug/L

RT: 2.14 min Scan# 327

Delta R.T. -0.00 min

Lab File: VV008842.D

Acq: 05 Dec 2018 15:34

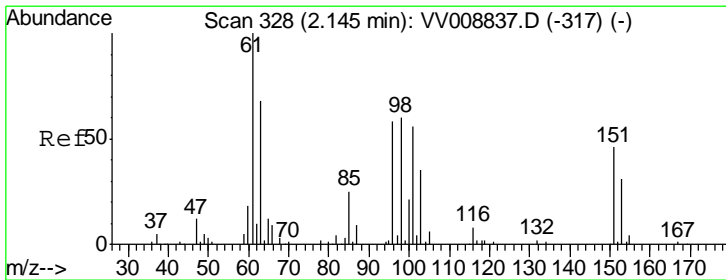
Tgt Ion: 96 Resp: 32455

Ion Ratio Lower Upper

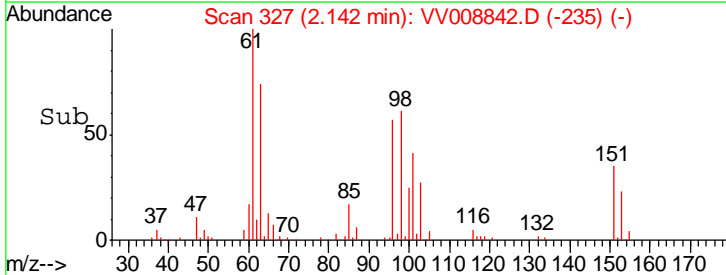
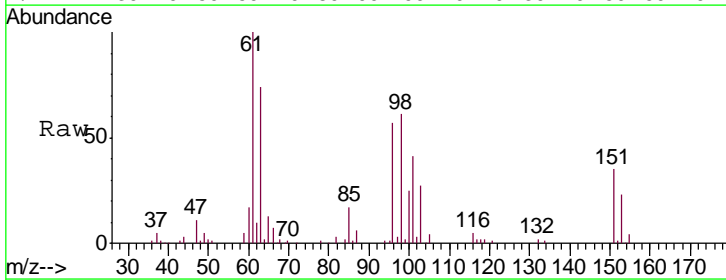
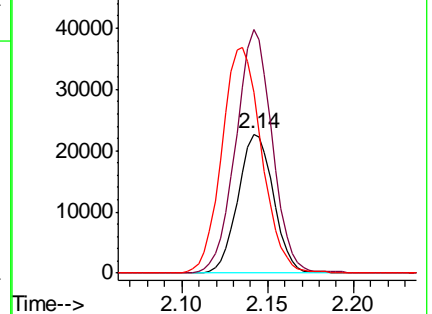
96 100

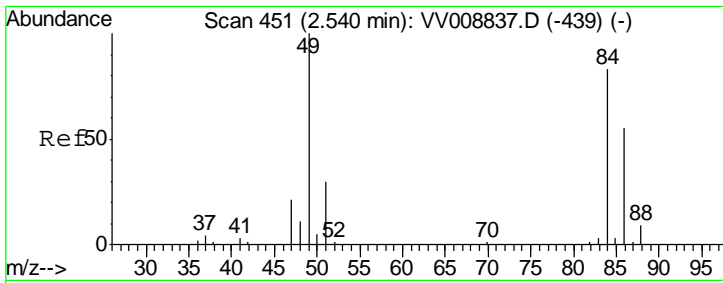
61 175.6 120.8 224.4

63 130.6 85.0 158.0



Abundance Ion 96.00 (95.70 to 96.70): VV0  
Ion 61.05 (60.75 to 61.75): VV0  
Ion 63.00 (62.70 to 63.70): VV0

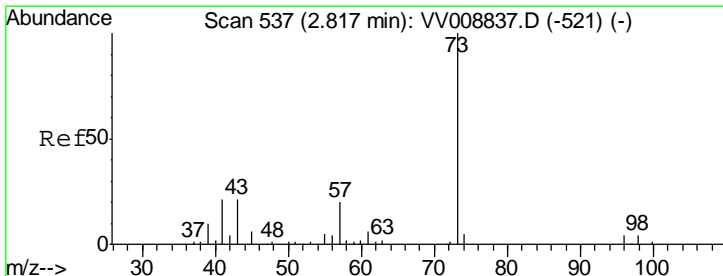
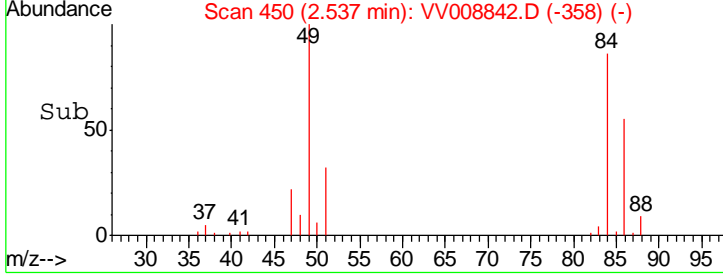
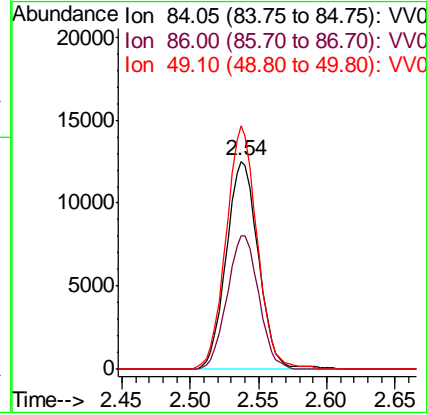
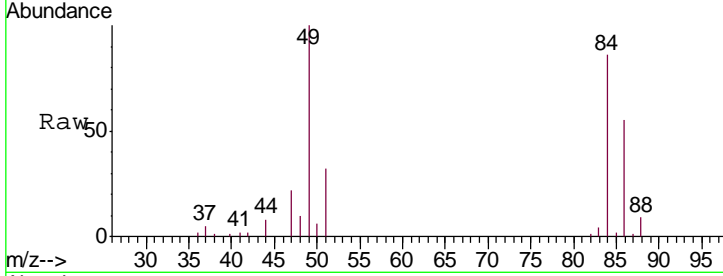




#16  
 Methylene chloride  
 Concen: 3.262 ug/L  
 RT: 2.54 min Scan# 450  
 Delta R.T. -0.00 min  
 Lab File: VV008842.D  
 Acq: 05 Dec 2018 15:34

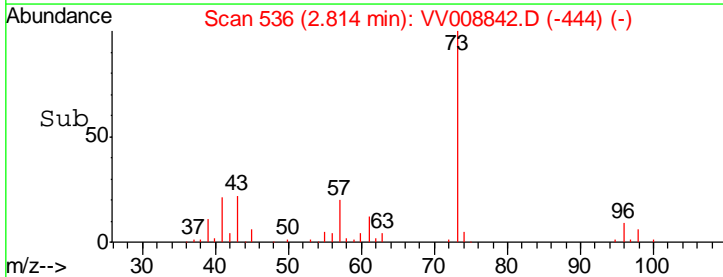
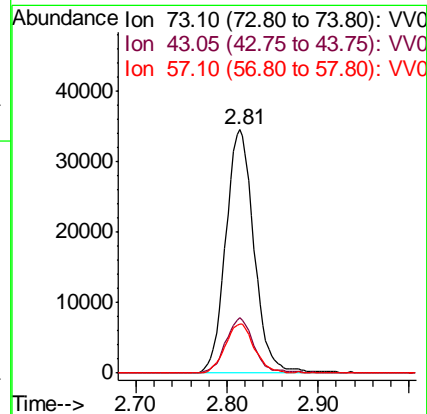
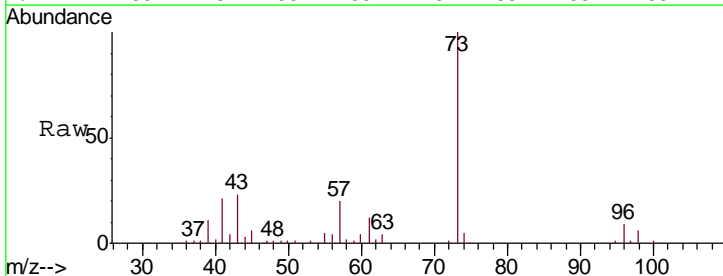
Instrument :  
 MSVOA\_V  
 ClientSampled :  
 A4130

Tgt Ion	Resp	Lower	Upper
84	100		
86	64.0	46.7	86.7
49	116.9	84.8	157.4

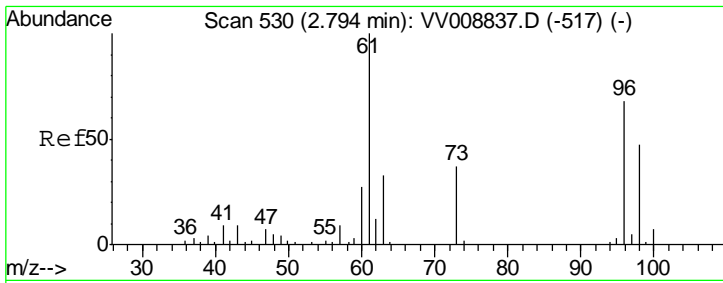


#17  
 Methyl tert-butyl Ether  
 Concen: 5.222 ug/L  
 RT: 2.81 min Scan# 536  
 Delta R.T. -0.00 min  
 Lab File: VV008842.D  
 Acq: 05 Dec 2018 15:34

Tgt Ion	Resp	Lower	Upper
73	100		
43	22.6	17.3	25.9
57	20.7	16.8	25.2



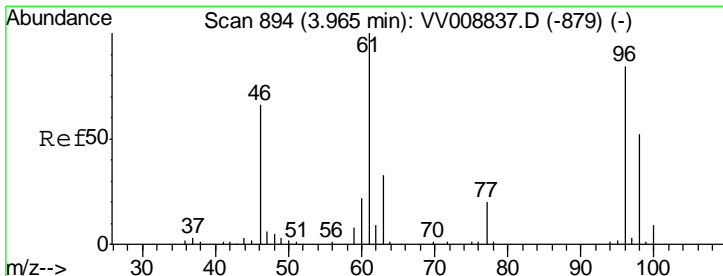
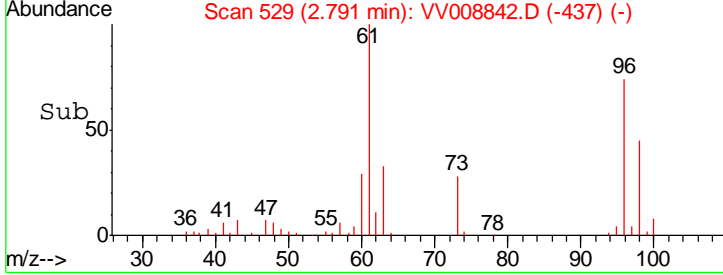
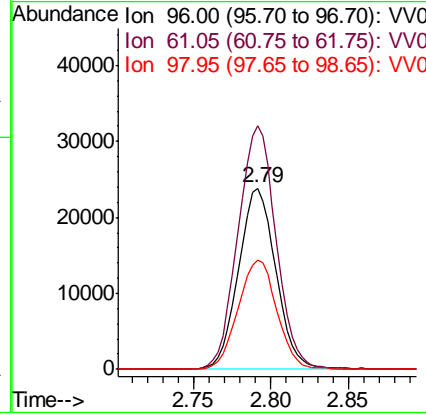
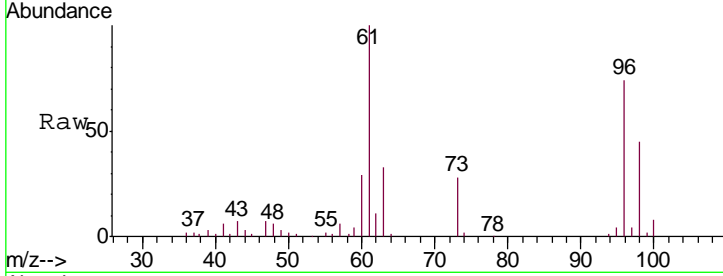




#18  
 trans-1,2-Dichloroethene  
 Concen: 6.302 ug/L  
 RT: 2.79 min Scan# 529  
 Delta R.T. -0.00 min  
 Lab File: VV008842.D  
 Acq: 05 Dec 2018 15:34

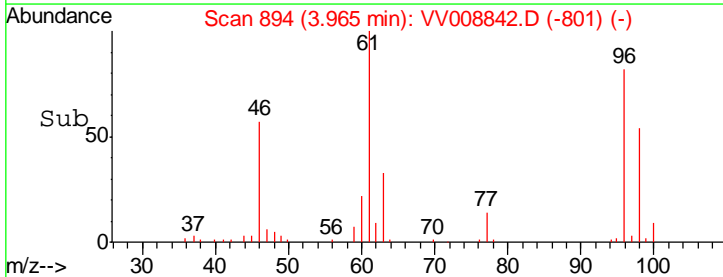
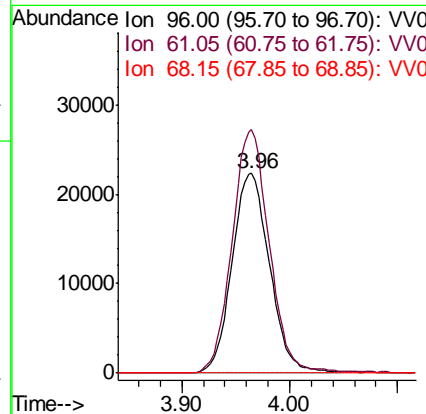
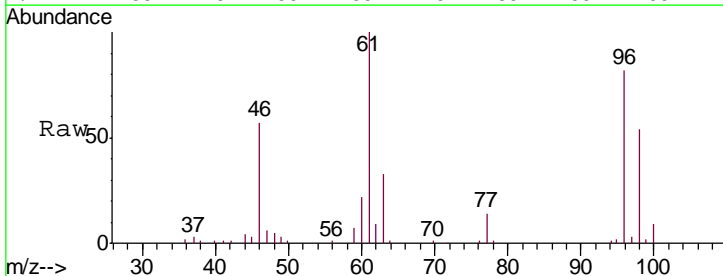
Instrument : MSVOA\_V  
 ClientSampled : A4130

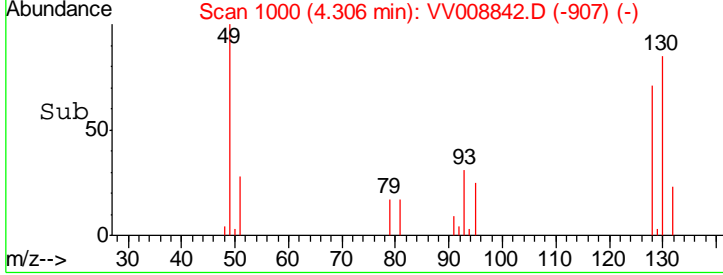
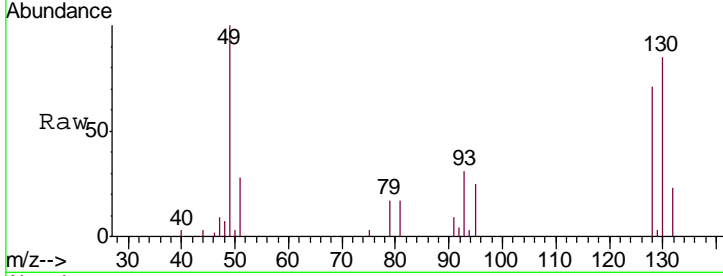
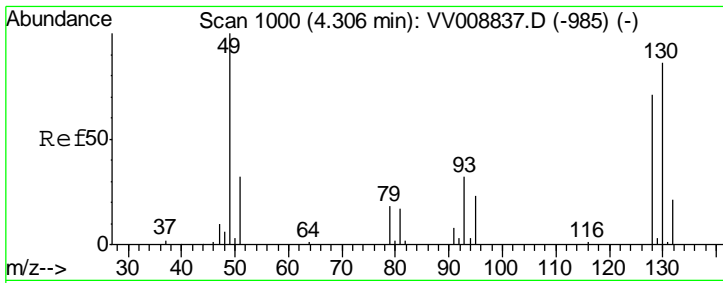
Tgt Ion	Resp	Lower	Upper
96	40097		
61	134.3	103.0	191.4
98	60.2	48.9	90.9



#22  
 cis-1,2-Dichloroethene  
 Concen: 6.221 ug/L  
 RT: 3.96 min Scan# 894  
 Delta R.T. 0.00 min  
 Lab File: VV008842.D  
 Acq: 05 Dec 2018 15:34

Tgt Ion	Resp	Lower	Upper
96	54181		
61	121.8	83.2	154.6
68	0.0	0.0	0.0

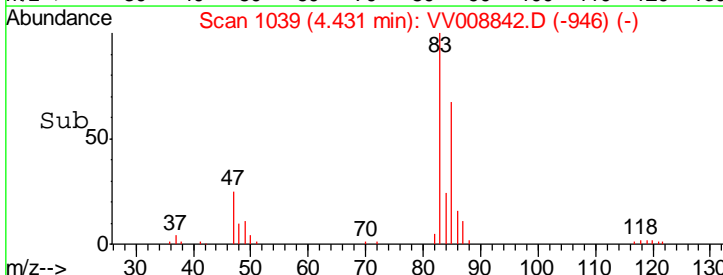
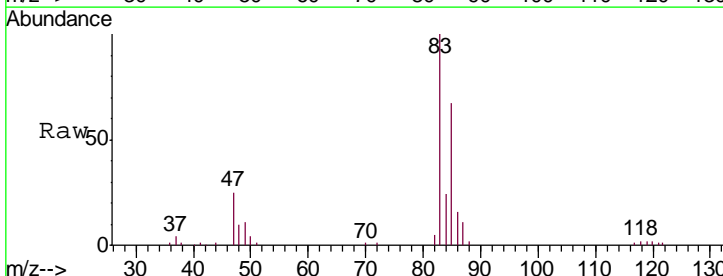
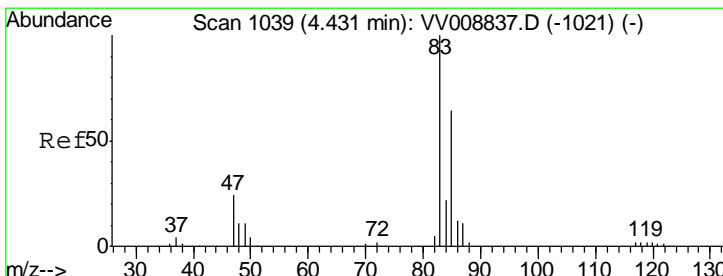
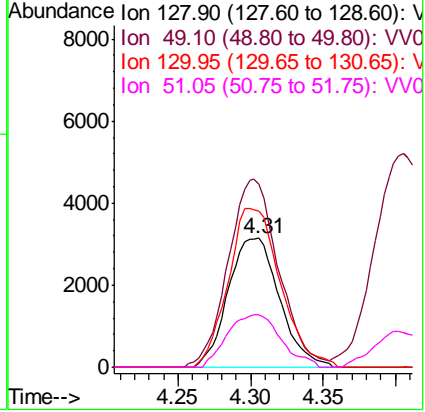




#23  
 Bromochloromethane  
 Concen: 2.101 ug/L  
 RT: 4.31 min Scan# 1000  
 Delta R.T. 0.00 min  
 Lab File: VV008842.D  
 Acq: 05 Dec 2018 15:34

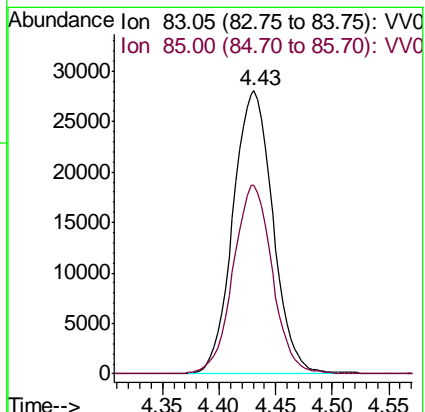
Instrument :  
 MSVOA\_V  
 ClientSampled :  
 A4130

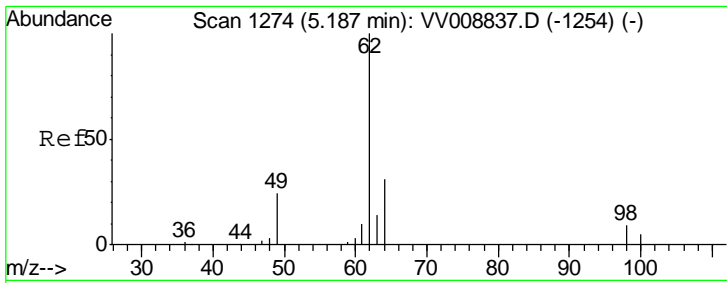
Tgt Ion	Resp	Lower	Upper
128	7742		
49	141.5	98.1	182.3
130	120.7	84.2	156.4
51	40.2	35.4	53.2



#25  
 Chloroform  
 Concen: 4.561 ug/L  
 RT: 4.43 min Scan# 1039  
 Delta R.T. 0.00 min  
 Lab File: VV008842.D  
 Acq: 05 Dec 2018 15:34

Tgt Ion	Resp	Lower	Upper
83	68745		
85	66.7	44.9	83.5



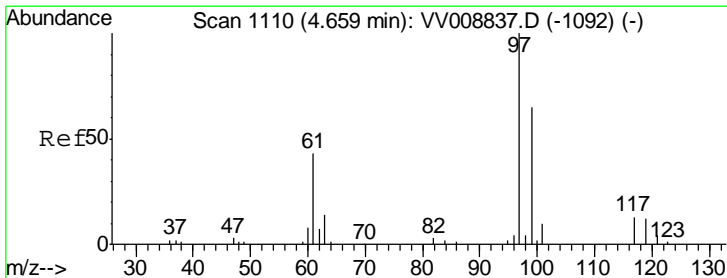
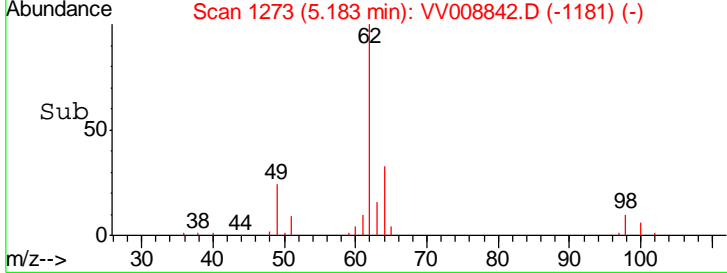
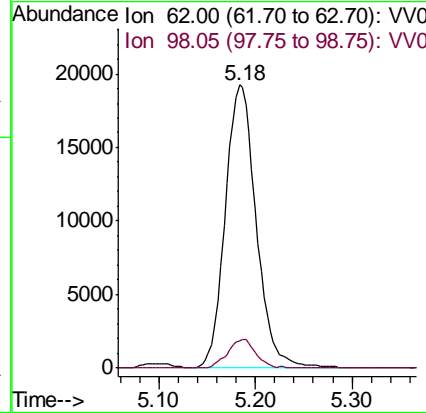
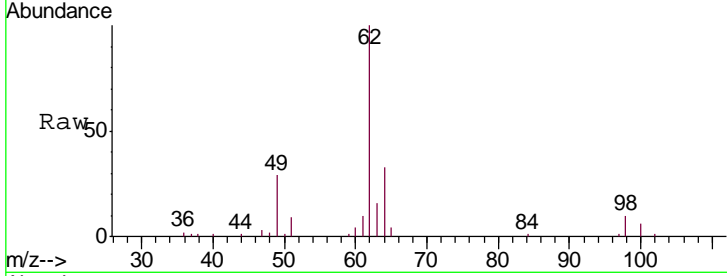


#27  
 1,2-Dichloroethane  
 Concen: 4.977 ug/L  
 RT: 5.18 min Scan# 1273  
 Delta R.T. -0.00 min  
 Lab File: VV008842.D  
 Acq: 05 Dec 2018 15:34

Instrument : MSVOA\_V  
 ClientSampled : A4130

Tgt Ion: 62 Resp: 42812

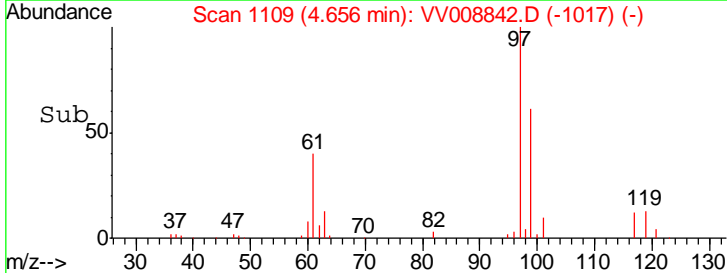
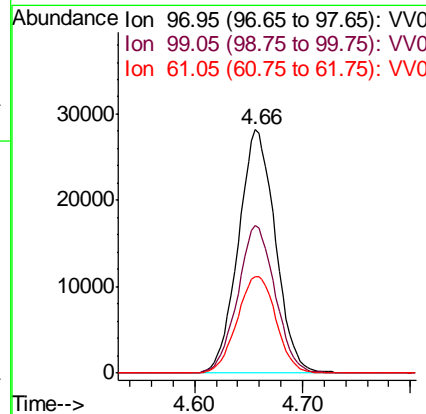
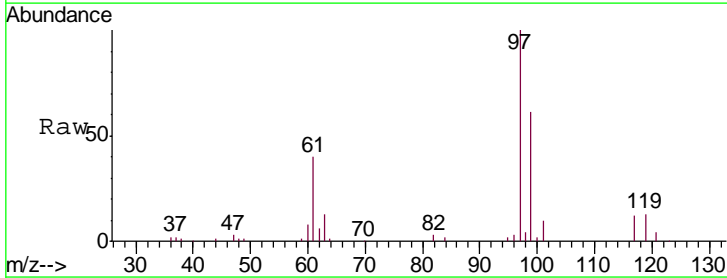
Ion	Ratio	Lower	Upper
62	100		
98	9.8	7.3	10.9

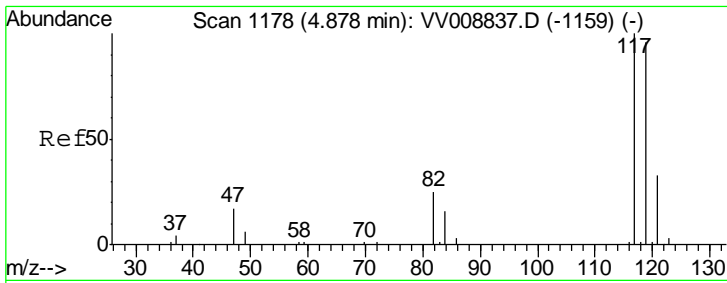


#29  
 1,1,1-Trichloroethane  
 Concen: 5.126 ug/L  
 RT: 4.66 min Scan# 1109  
 Delta R.T. -0.00 min  
 Lab File: VV008842.D  
 Acq: 05 Dec 2018 15:34

Tgt Ion: 97 Resp: 67236

Ion	Ratio	Lower	Upper
97	100		
99	61.4	50.7	76.1
61	41.4	34.0	51.0

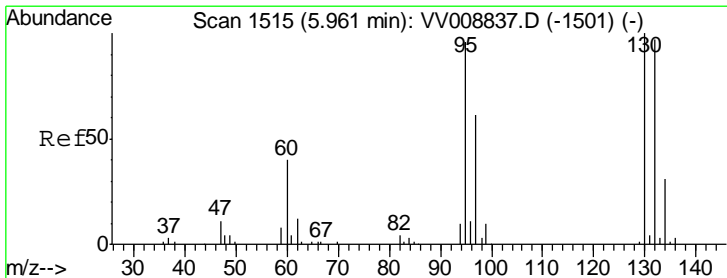
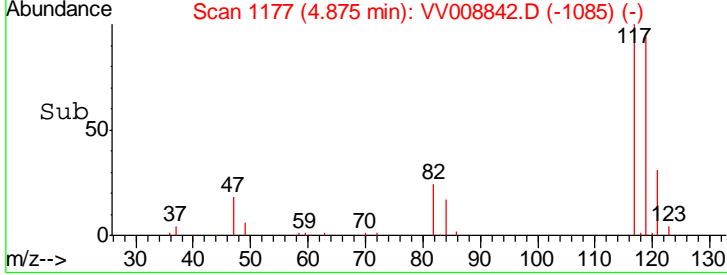
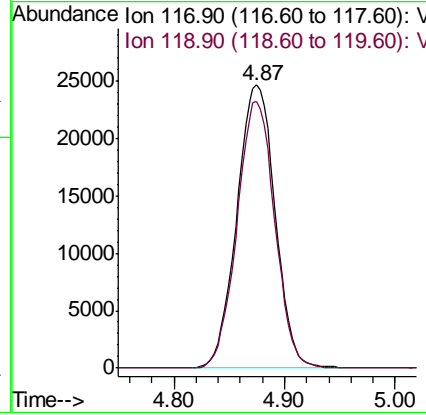
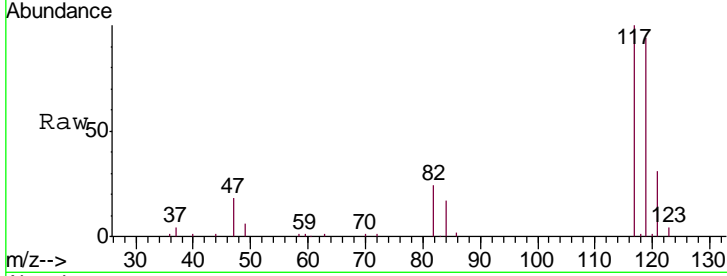




#31  
 Carbon tetrachloride  
 Concen: 5.013 ug/L  
 RT: 4.87 min Scan# 1177  
 Delta R.T. -0.00 min  
 Lab File: VV008842.D  
 Acq: 05 Dec 2018 15:34

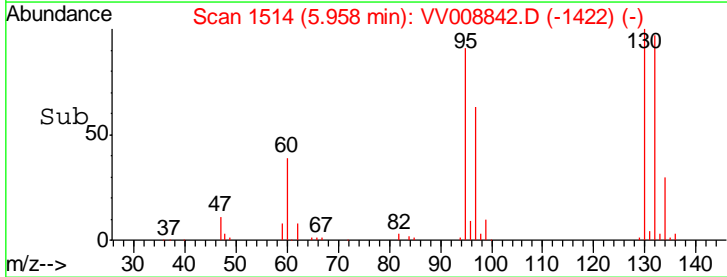
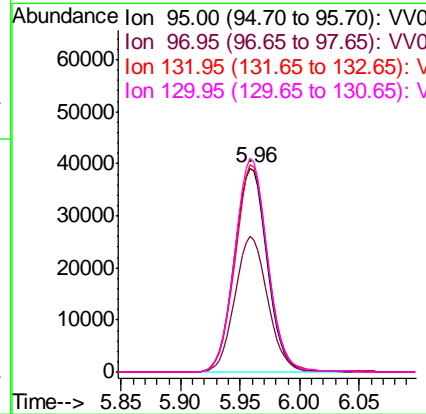
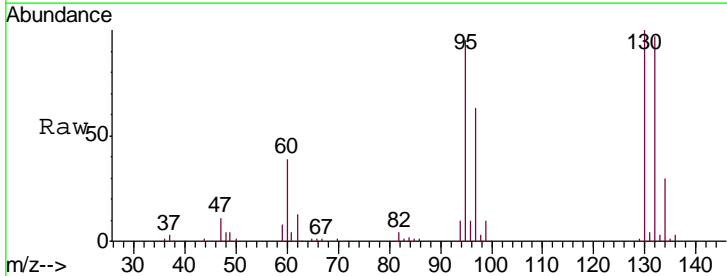
Instrument : MSVOA\_V  
 ClientSampled : A4130

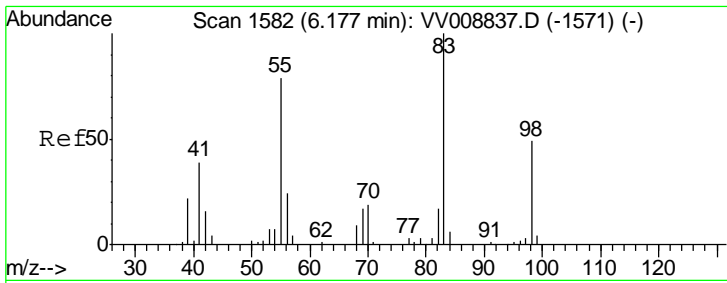
Tgt Ion: 117 Resp: 59192  
 Ion Ratio Lower Upper  
 117 100  
 119 92.8 77.1 115.7



#34  
 Trichloroethene  
 Concen: 8.211 ug/L  
 RT: 5.96 min Scan# 1514  
 Delta R.T. -0.00 min  
 Lab File: VV008842.D  
 Acq: 05 Dec 2018 15:34

Tgt Ion: 95 Resp: 75204  
 Ion Ratio Lower Upper  
 95 100  
 97 66.4 44.4 82.5  
 132 101.7 70.7 131.3  
 130 104.9 72.9 135.3

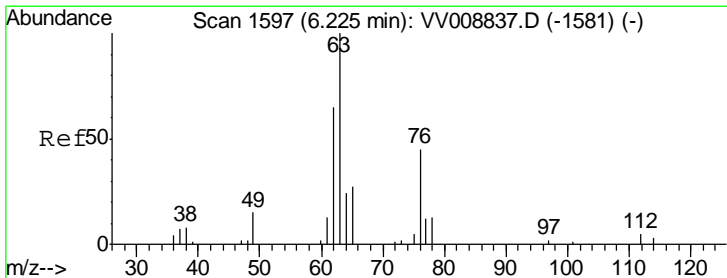
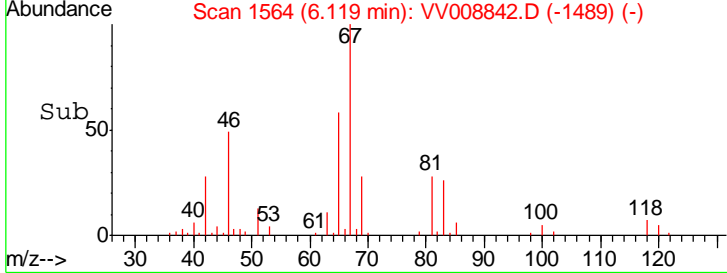
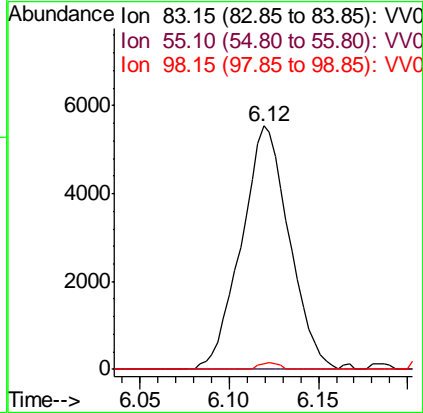
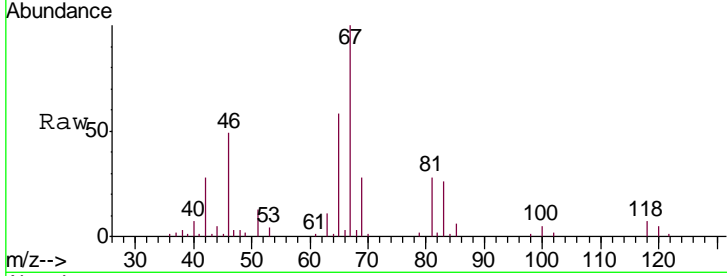




#35  
 Methylcyclohexane  
 Concen: 0.714 ug/L  
 RT: 6.12 min Scan# 1564  
 Delta R.T. -0.06 min  
 Lab File: VV008842.D  
 Acq: 05 Dec 2018 15:34

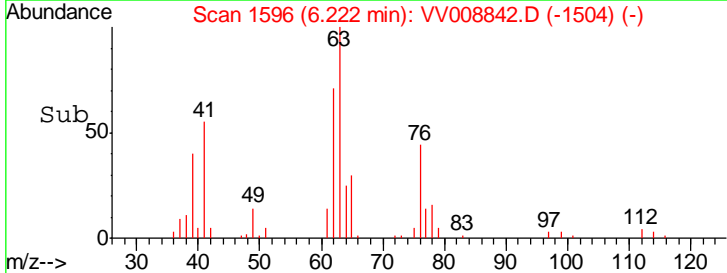
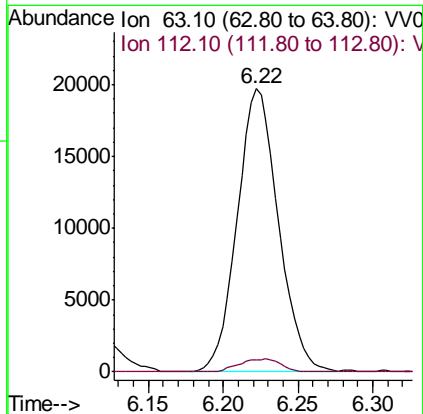
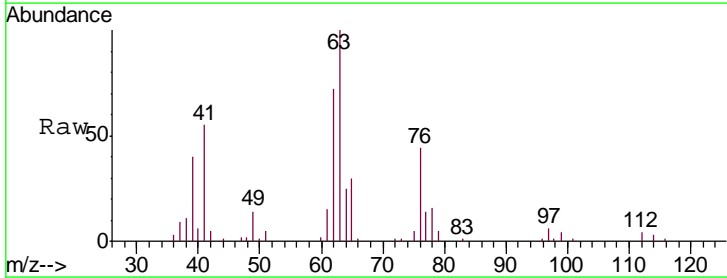
Instrument :  
 MSVOA\_V  
 ClientSampled :  
 A4130

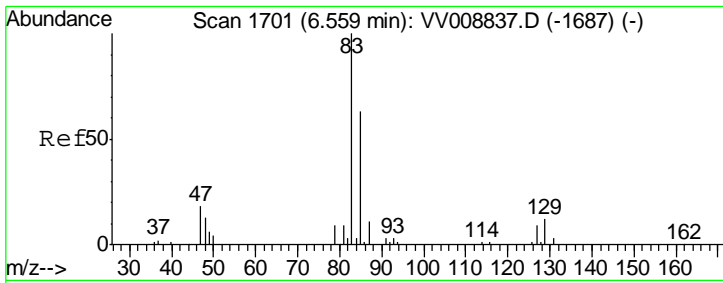
Tgt Ion	Resp	Lower	Upper
83	10347		
55	0.0	60.0	90.0#
98	1.2	39.0	58.6#



#37  
 1,2-Dichloropropane  
 Concen: 4.889 ug/L  
 RT: 6.22 min Scan# 1596  
 Delta R.T. -0.00 min  
 Lab File: VV008842.D  
 Acq: 05 Dec 2018 15:34

Tgt Ion	Resp	Lower	Upper
63	37736		
112	4.6	3.5	5.3

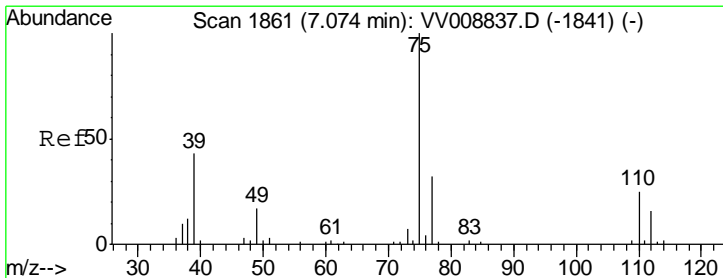
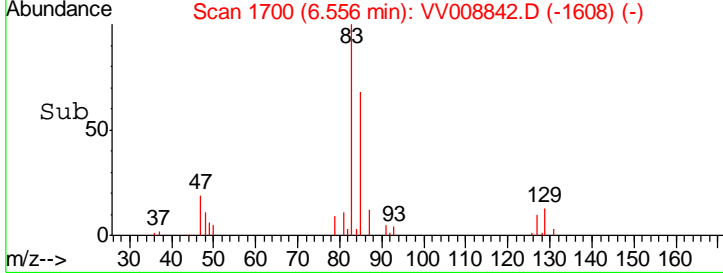
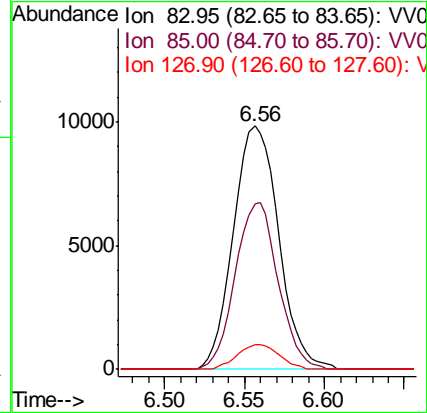
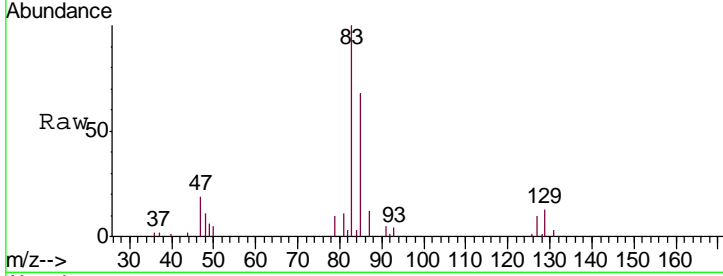




#38  
 Bromodichloromethane  
 Concen: 2.002 ug/L  
 RT: 6.56 min Scan# 1700  
 Delta R.T. -0.00 min  
 Lab File: VV008842.D  
 Acq: 05 Dec 2018 15:34

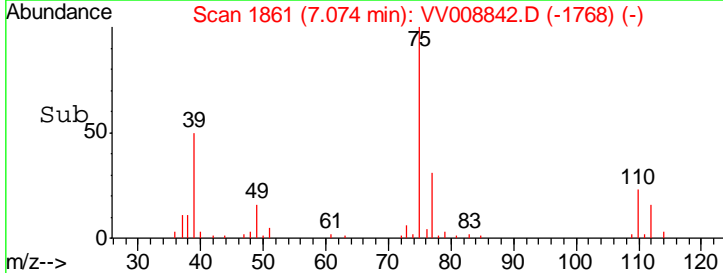
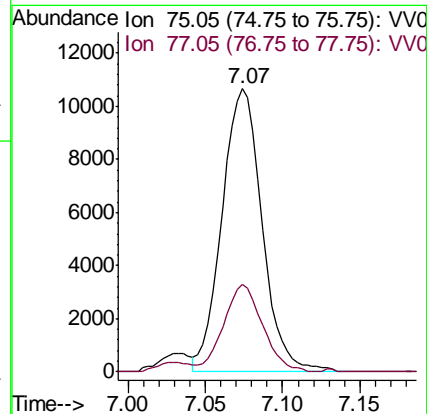
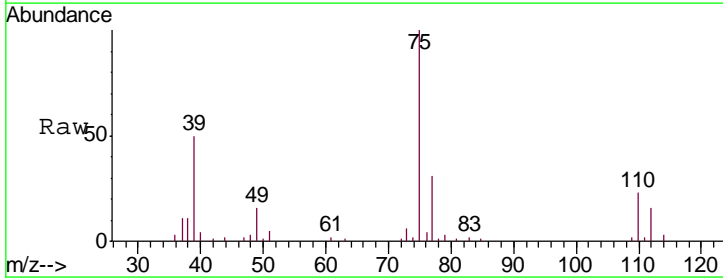
Instrument : MSVOA\_V  
 ClientSampled : A4130

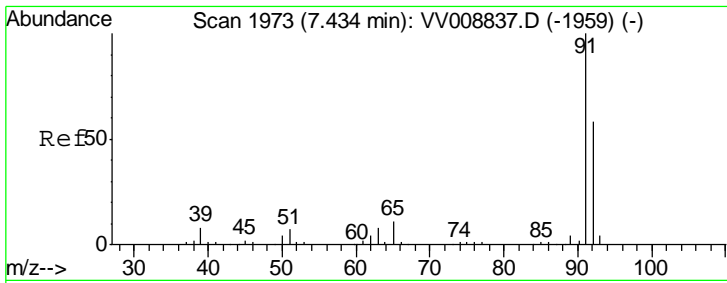
Tgt Ion	Resp	Lower	Upper
83	19017		
85	67.8	44.2	82.0
127	10.0	7.5	11.3



#39  
 cis-1,3-Dichloropropene  
 Concen: 1.775 ug/L  
 RT: 7.07 min Scan# 1861  
 Delta R.T. 0.00 min  
 Lab File: VV008842.D  
 Acq: 05 Dec 2018 15:34

Tgt Ion	Resp	Lower	Upper
75	19193		
77	30.8	22.3	41.3

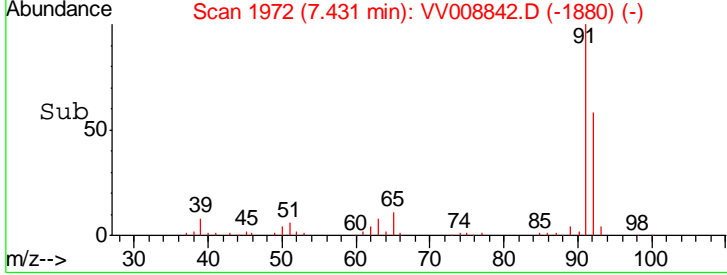
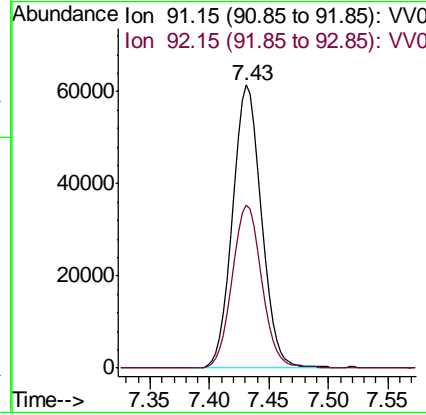
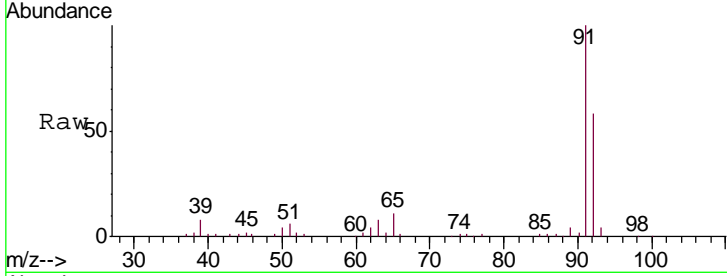




#42  
 Toluene  
 Concen: 3.053 ug/L  
 RT: 7.43 min Scan# 1972  
 Delta R.T. -0.00 min  
 Lab File: VV008842.D  
 Acq: 05 Dec 2018 15:34

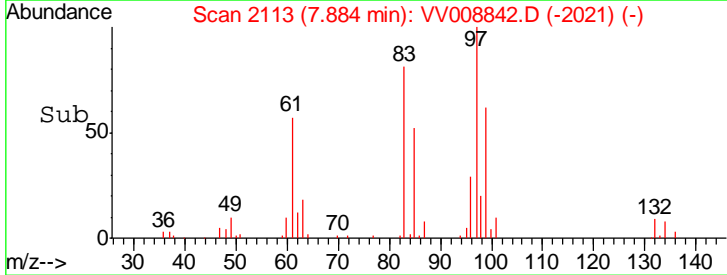
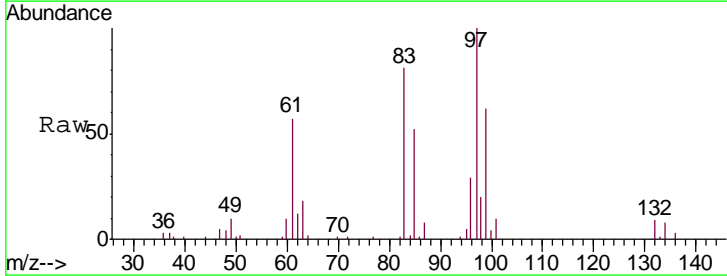
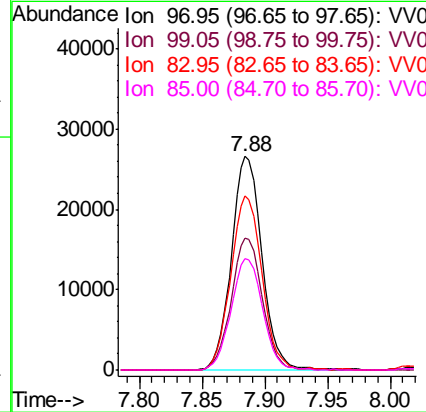
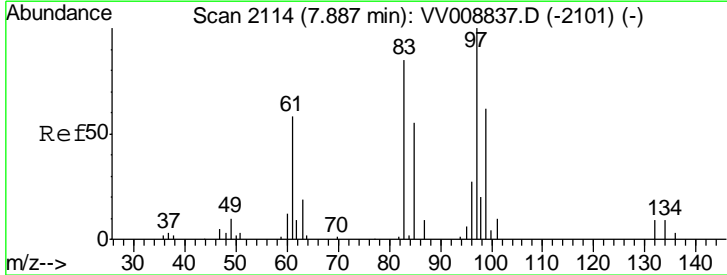
Instrument :  
 MSVOA\_V  
 ClientSampled :  
 A4130

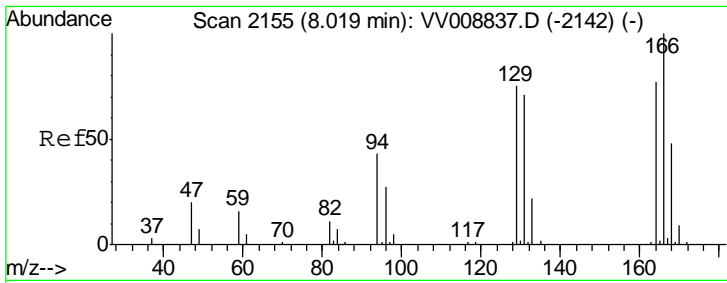
Tgt Ion: 91 Resp: 103780  
 Ion Ratio Lower Upper  
 91 100  
 92 57.8 40.9 76.0



#45  
 1,1,2-Trichloroethane  
 Concen: 8.305 ug/L  
 RT: 7.88 min Scan# 2113  
 Delta R.T. -0.00 min  
 Lab File: VV008842.D  
 Acq: 05 Dec 2018 15:34

Tgt Ion: 97 Resp: 44999  
 Ion Ratio Lower Upper  
 97 100  
 99 62.0 43.3 80.3  
 83 81.4 59.4 110.2  
 85 52.4 38.5 71.5

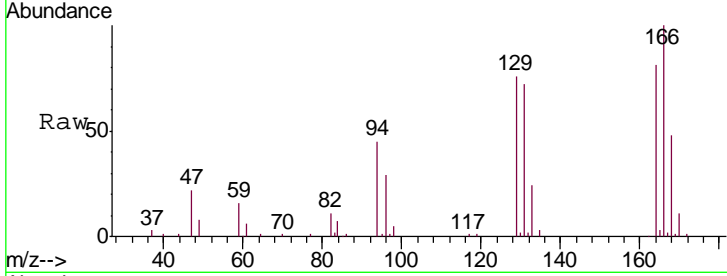




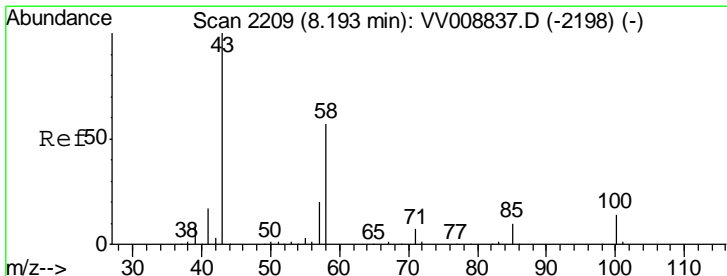
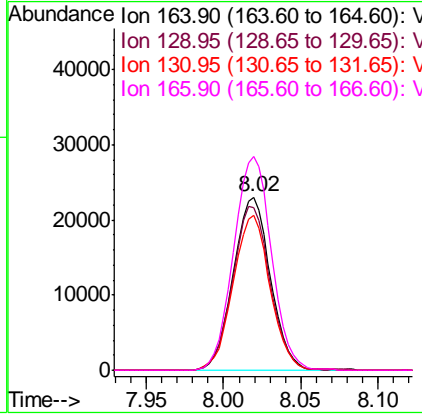
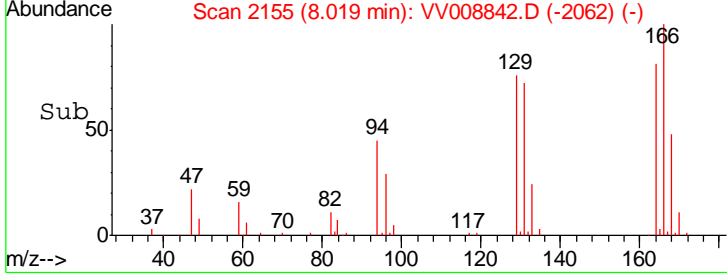
#47

Tetrachloroethene  
 Concen: 5.203 ug/L  
 RT: 8.02 min Scan# 2155  
 Delta R.T. 0.00 min  
 Lab File: VV008842.D  
 Acq: 05 Dec 2018 15:34

Instrument : MSVOA\_V  
 ClientSampled : A4130

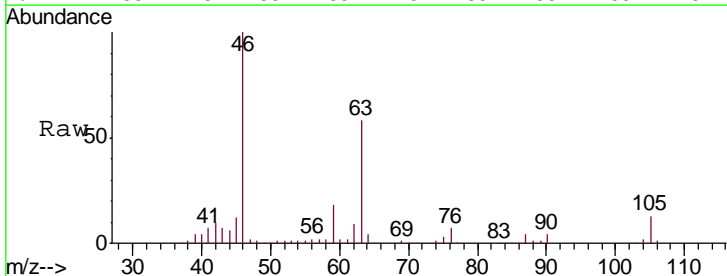


Tgt Ion	Resp	Lower	Upper
164	100		
129	94.3	68.8	127.8
131	89.3	64.8	120.4
166	123.5	91.5	169.9

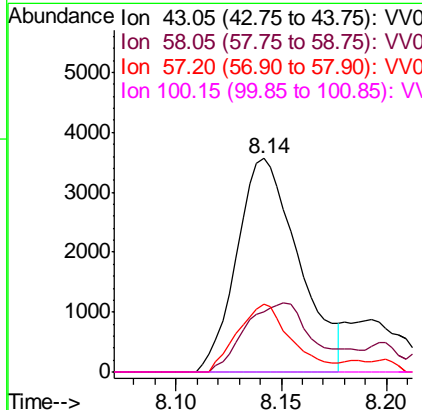
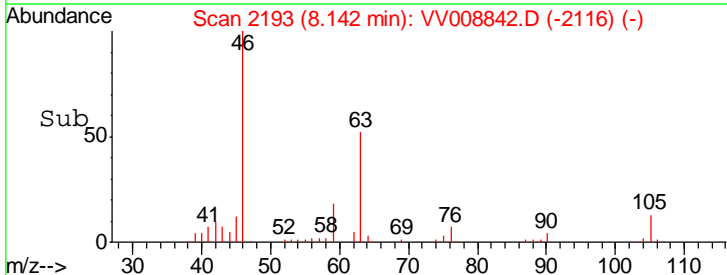


#48

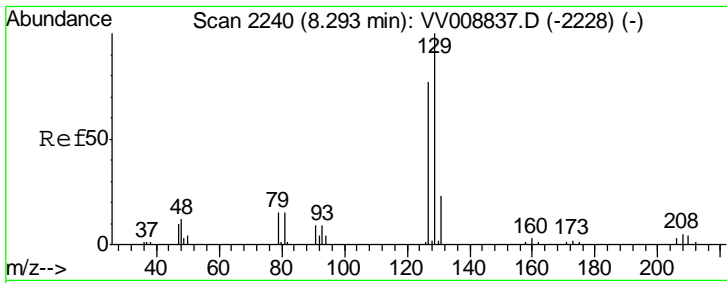
2-Hexanone  
 Concen: 2.635 ug/L  
 RT: 8.14 min Scan# 2193  
 Delta R.T. -0.05 min  
 Lab File: VV008842.D  
 Acq: 05 Dec 2018 15:34



Tgt Ion	Resp	Lower	Upper
43	100		
58	37.3	44.4	66.6#
57	27.4	15.8	23.8#
100	1.3	10.9	16.3#



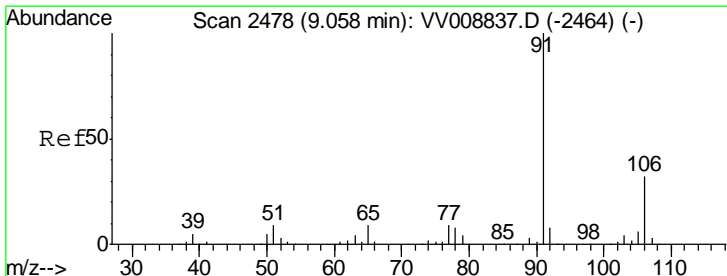
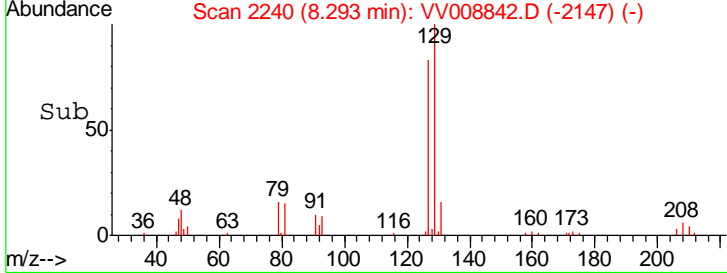
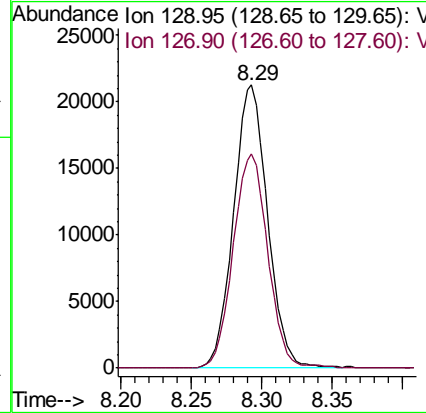
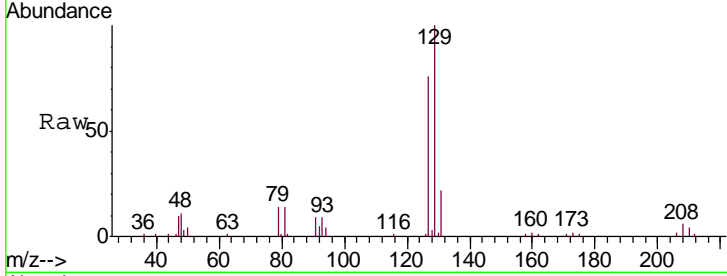




#49  
 Dibromochloromethane  
 Concen: 5.673 ug/L  
 RT: 8.29 min Scan# 2240  
 Delta R.T. 0.00 min  
 Lab File: VV008842.D  
 Acq: 05 Dec 2018 15:34

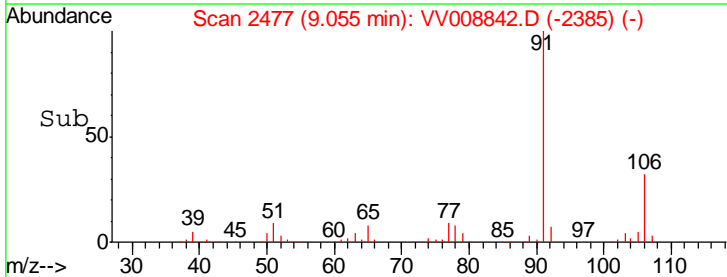
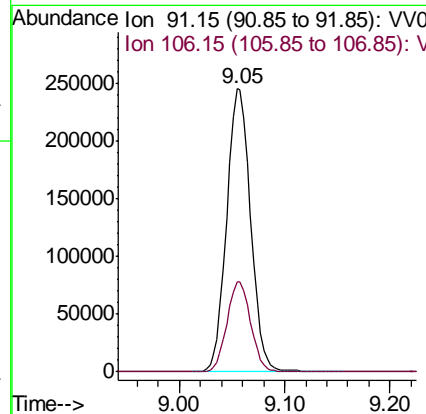
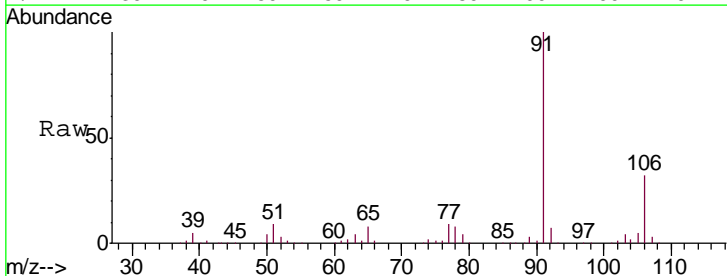
Instrument : MSVOA\_V  
 ClientSampled : A4130

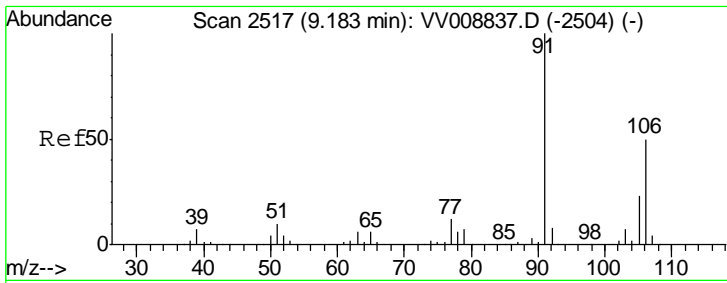
Tgt Ion: 129 Resp: 35955  
 Ion Ratio Lower Upper  
 129 100  
 127 75.8 54.0 100.4



#52  
 Ethylbenzene  
 Concen: 10.418 ug/L  
 RT: 9.05 min Scan# 2477  
 Delta R.T. -0.00 min  
 Lab File: VV008842.D  
 Acq: 05 Dec 2018 15:34

Tgt Ion: 91 Resp: 386623  
 Ion Ratio Lower Upper  
 91 100  
 106 31.6 22.1 41.1

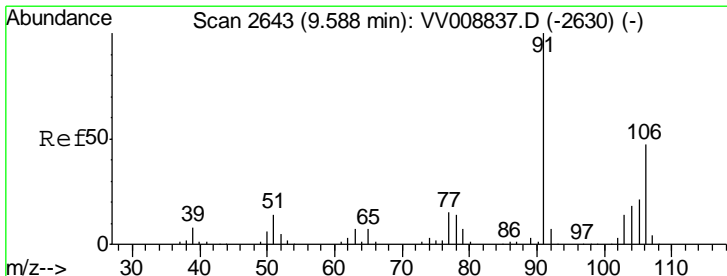
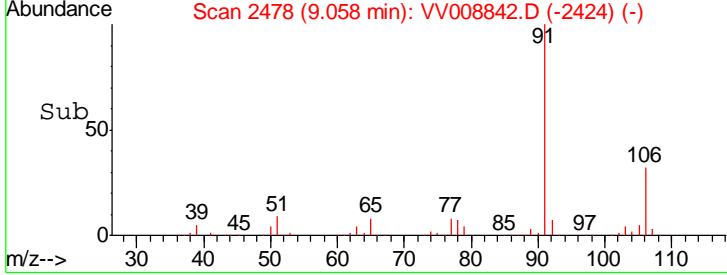
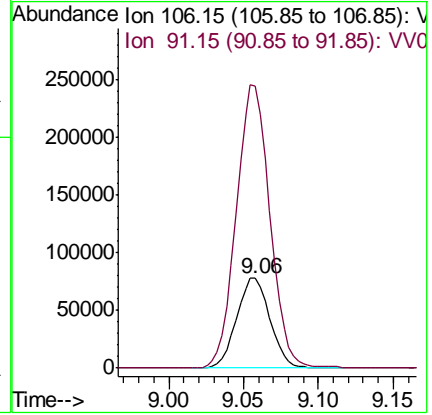
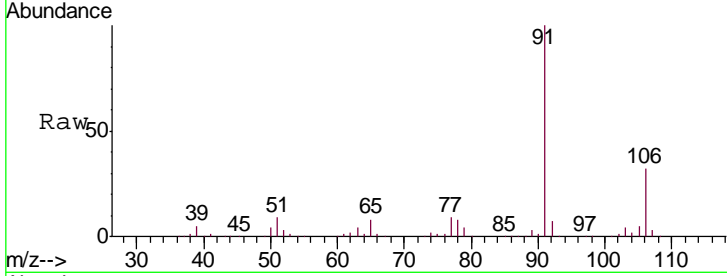




#53  
 m,p-xylene  
 Concen: 8.609 ug/L  
 RT: 9.06 min Scan# 2478  
 Delta R.T. -0.13 min  
 Lab File: VV008842.D  
 Acq: 05 Dec 2018 15:34

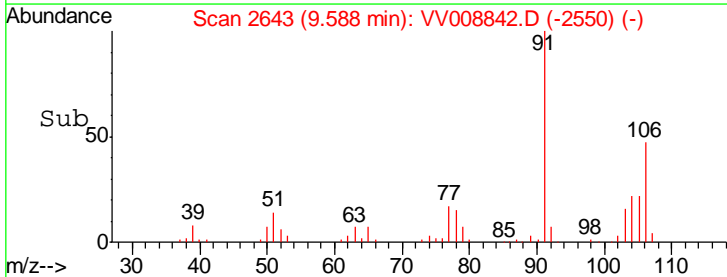
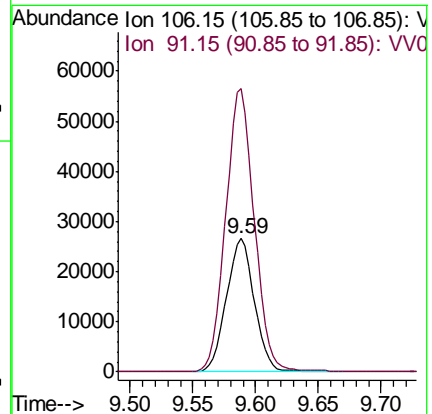
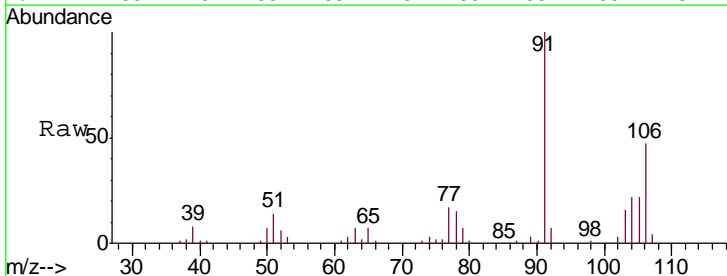
Instrument : MSVOA\_V  
 ClientSampled : A4130

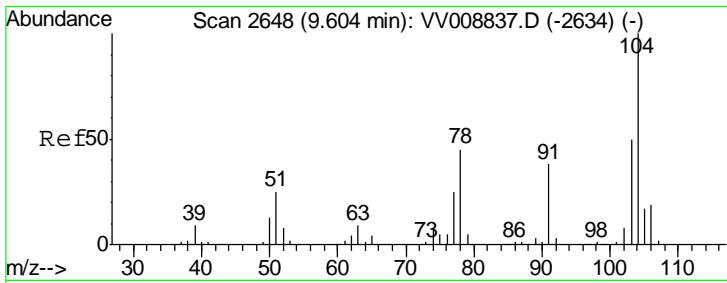
Tgt Ion:106 Resp: 122053  
 Ion Ratio Lower Upper  
 106 100  
 91 314.3 141.9 263.5#



#54  
 o-xylene  
 Concen: 3.076 ug/L  
 RT: 9.59 min Scan# 2643  
 Delta R.T. 0.00 min  
 Lab File: VV008842.D  
 Acq: 05 Dec 2018 15:34

Tgt Ion:106 Resp: 41593  
 Ion Ratio Lower Upper  
 106 100  
 91 212.0 149.0 276.6

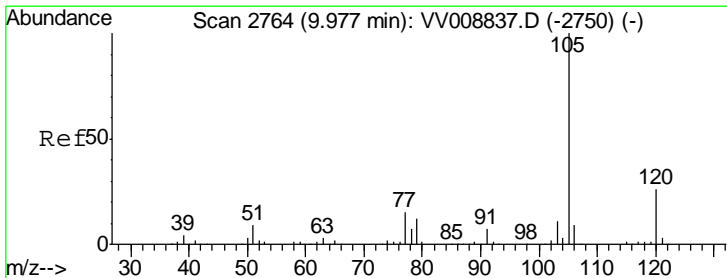
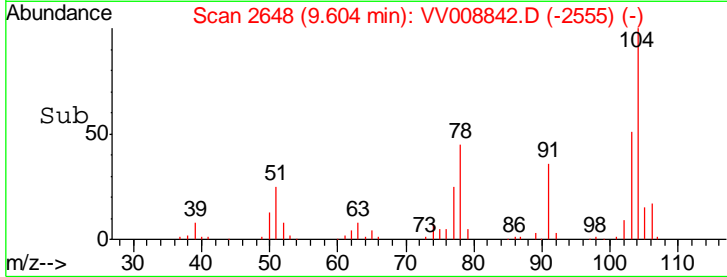
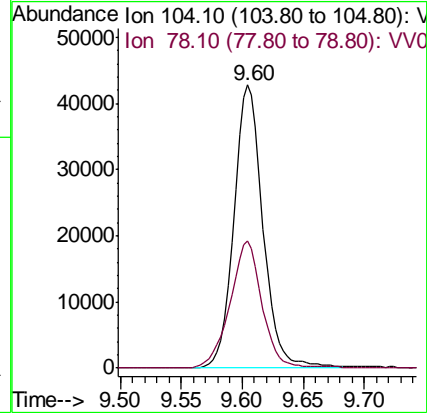
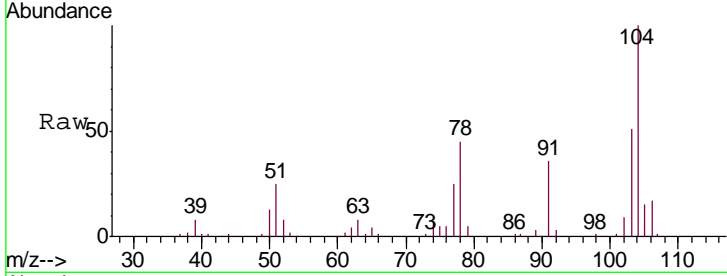




#55  
 Styrene  
 Concen: 3.177 ug/L  
 RT: 9.60 min Scan# 2648  
 Delta R.T. 0.00 min  
 Lab File: VV008842.D  
 Acq: 05 Dec 2018 15:34

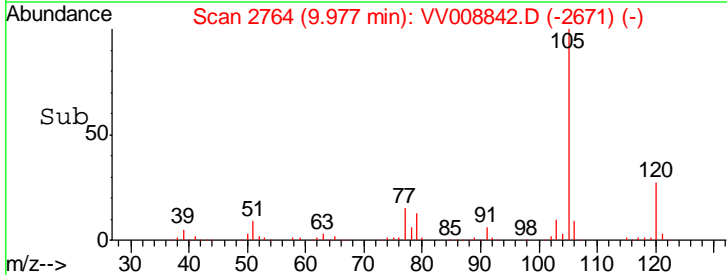
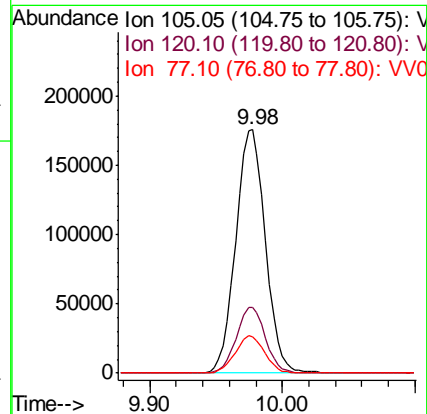
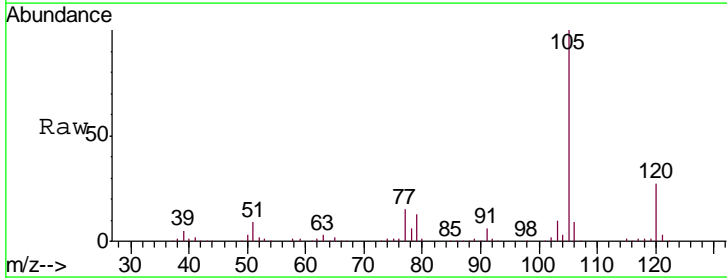
Instrument :  
 MSVOA\_V  
 ClientSampled :  
 A4130

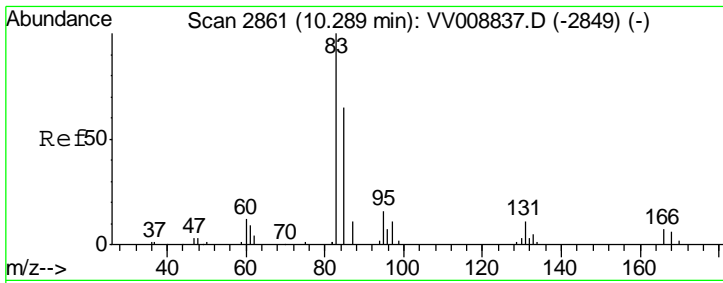
Tgt Ion	Resp	Lower	Upper
104	71072		
78	45.1	31.4	58.4



#56  
 Isopropylbenzene  
 Concen: 7.445 ug/L  
 RT: 9.98 min Scan# 2764  
 Delta R.T. 0.00 min  
 Lab File: VV008842.D  
 Acq: 05 Dec 2018 15:34

Tgt Ion	Resp	Lower	Upper
105	272341		
120	26.6	21.2	31.8
77	15.2	12.4	18.6



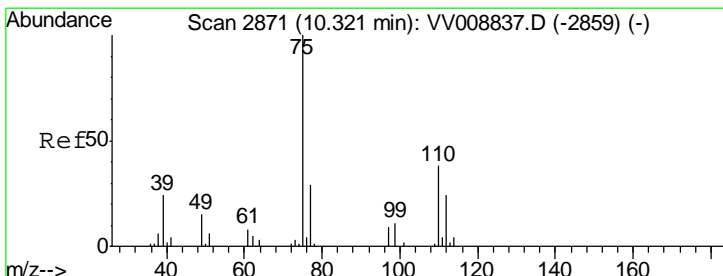
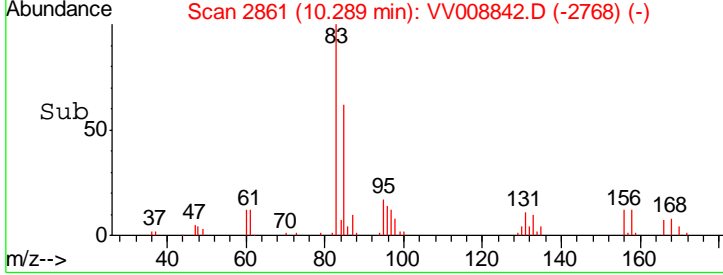
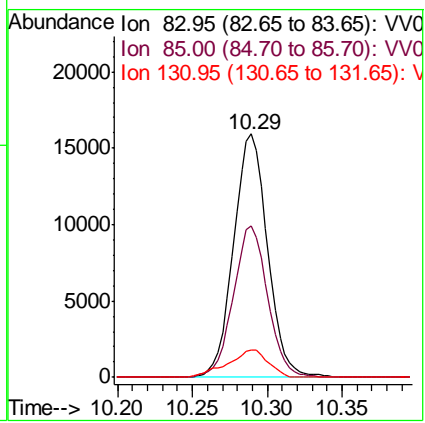
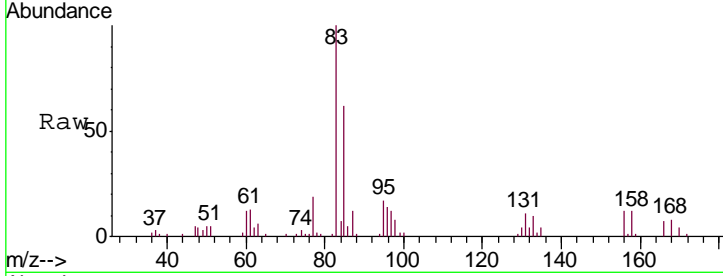


#58  
 1,1,2,2-Tetrachloroethane  
 Concen: 4.603 ug/L  
 RT: 10.29 min Scan# 2861  
 Delta R.T. 0.00 min  
 Lab File: VV008842.D  
 Acq: 05 Dec 2018 15:34

Instrument : MSVOA\_V  
 ClientSampled : A4130

Tgt Ion: 83 Resp: 25170

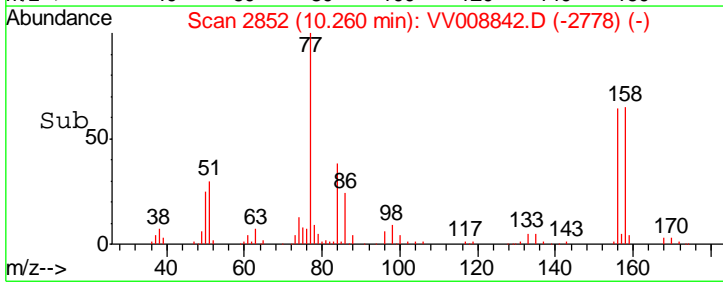
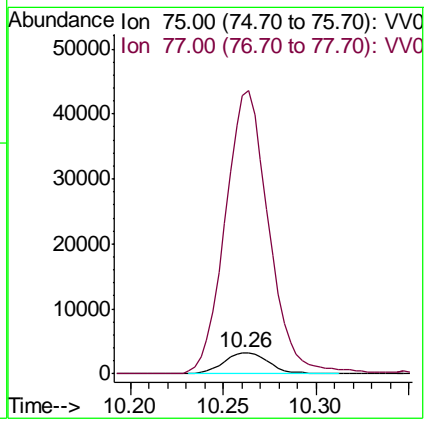
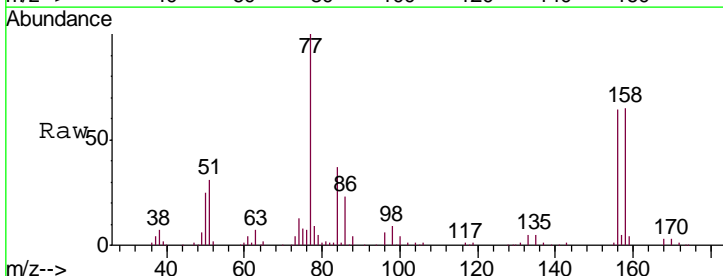
Ion	Ratio	Lower	Upper
83	100		
85	62.4	45.8	85.0
131	11.4	9.6	14.4

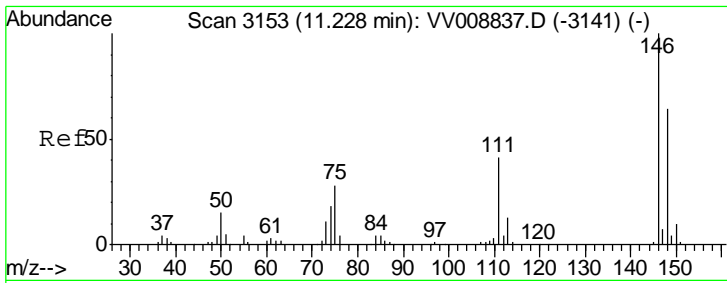


#59  
 1,2,3-Trichloropropane  
 Concen: 1.220 ug/L  
 RT: 10.26 min Scan# 2852  
 Delta R.T. -0.06 min  
 Lab File: VV008842.D  
 Acq: 05 Dec 2018 15:34

Tgt Ion: 75 Resp: 5620

Ion	Ratio	Lower	Upper
75	100		
77	1266.9	24.8	37.2#

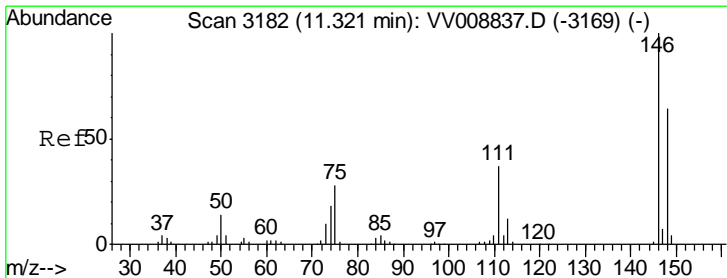
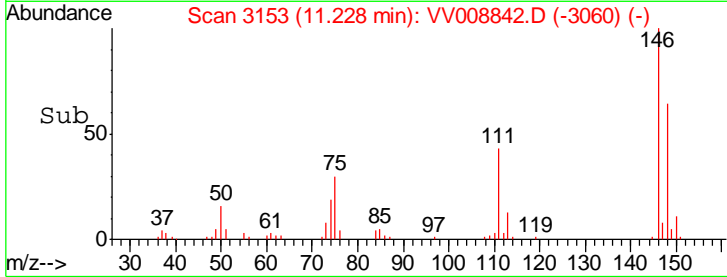
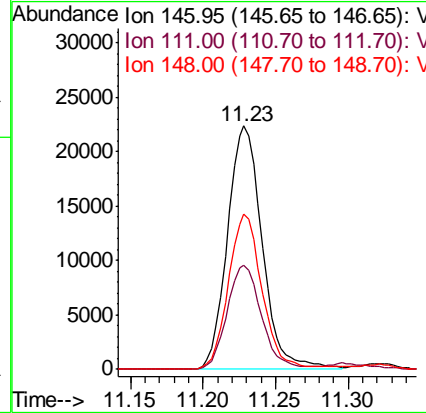
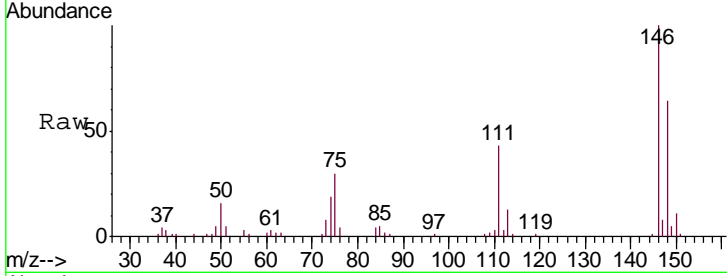




#62  
 1,3-Dichlorobenzene  
 Concen: 2.094 ug/L  
 RT: 11.23 min Scan# 3153  
 Delta R.T. 0.00 min  
 Lab File: VV008842.D  
 Acq: 05 Dec 2018 15:34

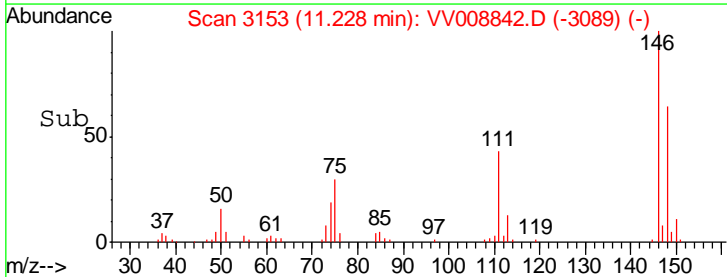
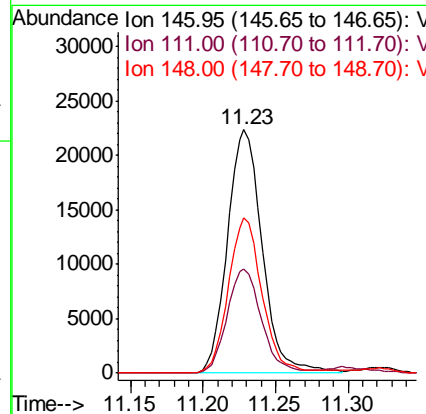
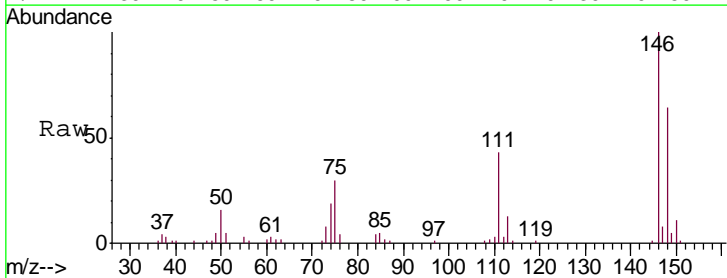
Instrument :  
 MSVOA\_V  
 ClientSampled :  
 A4130

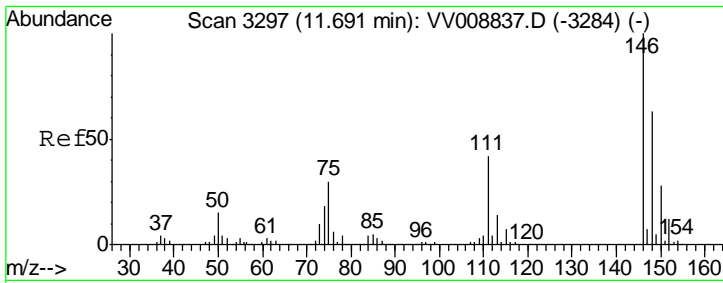
Tgt Ion	Resp	Lower	Upper
146	37104		
111	42.9	28.5	52.9
148	63.7	45.0	83.6



#63  
 1,4-Dichlorobenzene  
 Concen: 2.048 ug/L  
 RT: 11.23 min Scan# 3153  
 Delta R.T. -0.09 min  
 Lab File: VV008842.D  
 Acq: 05 Dec 2018 15:34

Tgt Ion	Resp	Lower	Upper
146	37104		
111	42.9	26.2	48.8
148	63.7	44.7	82.9





#65  
 1,2-Dichlorobenzene  
 Concen: 2.062 ug/L  
 RT: 11.69 min Scan# 3298  
 Delta R.T. 0.00 min  
 Lab File: VV008842.D  
 Acq: 05 Dec 2018 15:34

Instrument : MSVOA\_V  
 ClientSampled : A4130

Tgt Ion	Resp	Lower	Upper
146	33751		
111	45.8	33.8	50.6
148	65.7	50.0	75.0

