

## Quantitation Report (Qedit)

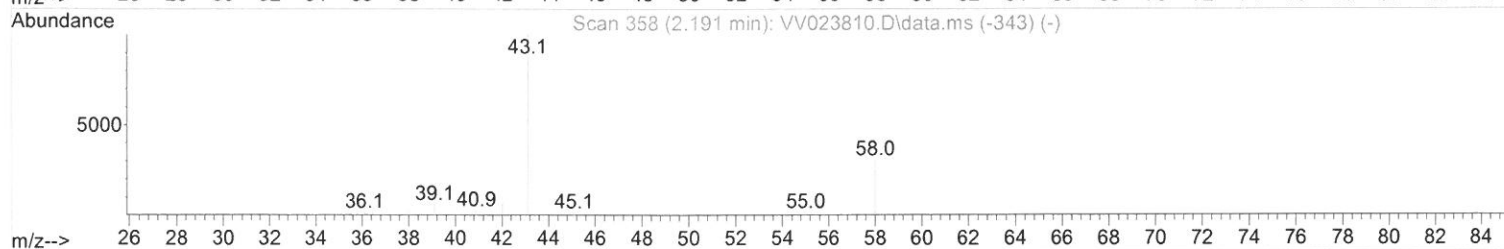
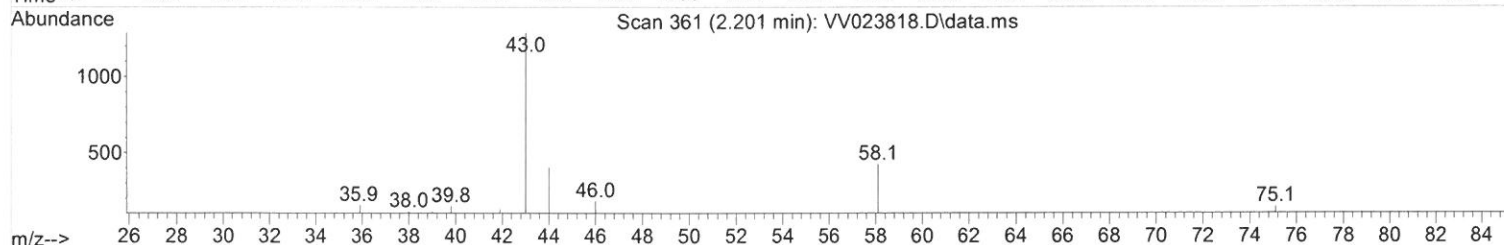
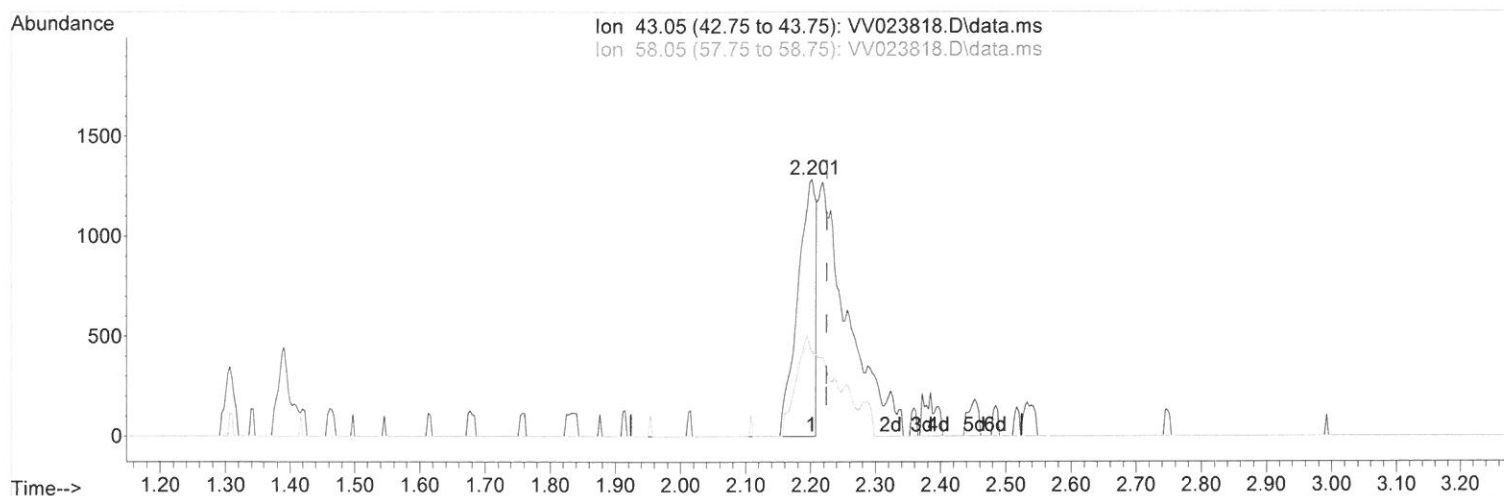
Data Path : Z:\voasrv\HPCHEM1\MSVOA\_V\Data\VV120721\  
Data File : VV023818.D  
Acq On : 07 Dec 2021 13:20  
Operator : SY/MD  
Sample : M4879-13  
Misc : 25.0mL/MSVOA\_V/WATER  
ALS Vial : 10 Sample Multiplier: 1

Instrument :  
MSVOA\_V  
ClientSampleId :  
C0G70

Manual IntegrationsAPPROVED

Quant Time: Dec 08 01:15:12 2021  
Quant Method : Z:\voasrv\HPCHEM1\MSVOA\_V\Method\SFAMVTR112321WMA.M  
Quant Title : TRACE VOA SFAM1.0  
QLast Update : Thu Dec 02 02:08:23 2021  
Response via : Initial Calibration

Reviewed By :John Carlone 12/08/2021  
Supervised By :Mahesh Dadoda 12/08/2021



TIC: VV023818.D\data.ms

(13) Acetone (T)

2.201min (-0.023) 2.20 ug/L

response 2482

Ion	Exp%	Act%
43.05	100.00	100.00
58.05	20.70	69.34#
0.00	0.00	0.00
0.00	0.00	0.00

# Quantitation Report (Qedit)

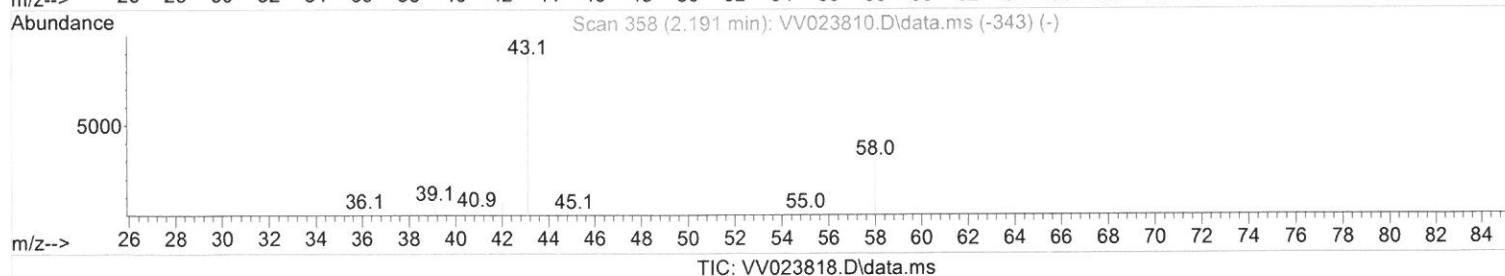
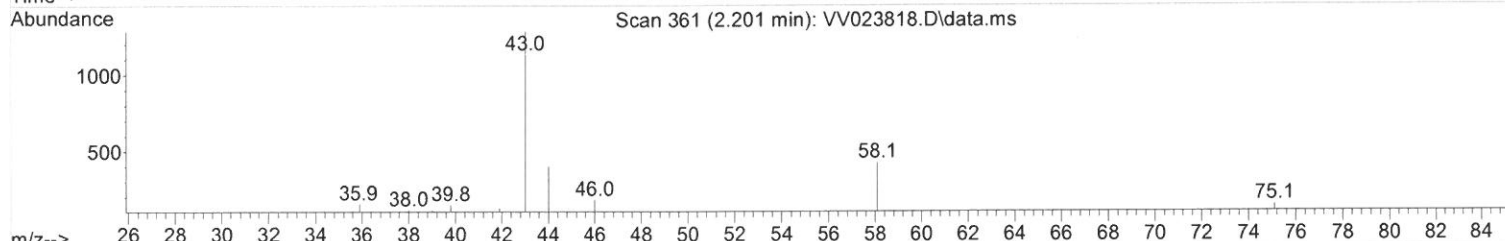
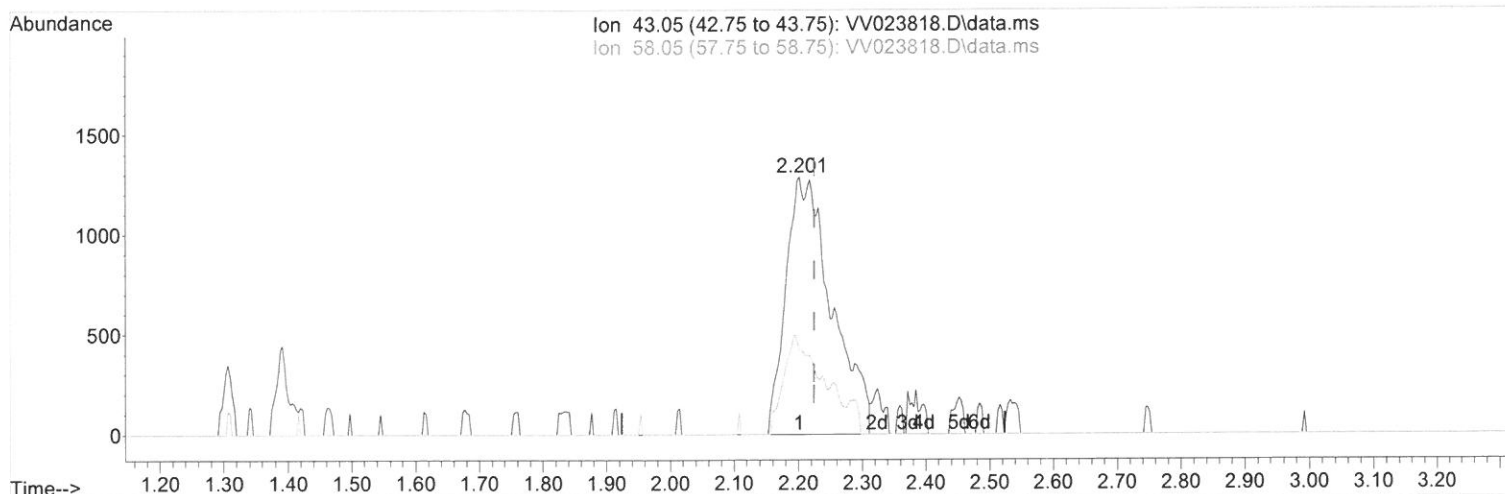
Data Path : Z:\voasrv\HPCHEM1\MSVOA\_V\Data\VV120721\  
 Data File : VV023818.D  
 Acq On : 07 Dec 2021 13:20  
 Operator : SY/MD  
 Sample : M4879-13  
 Misc : 25.0mL/MSVOA\_V/WATER  
 ALS Vial : 10 Sample Multiplier: 1

Instrument :  
 MSVOA\_V  
 ClientSampleId :  
 C0G70

Manual IntegrationsAPPROVED

Quant Time: Dec 08 01:15:12 2021  
 Quant Method : Z:\voasrv\HPCHEM1\MSVOA\_V\Method\SFAMVTR112321WMA.M  
 Quant Title : TRACE VOA SFAM1.0  
 QLast Update : Thu Dec 02 02:08:23 2021  
 Response via : Initial Calibration

Reviewed By :John Carlone 12/08/2021  
 Supervised By :Mahesh Dadoda 12/08/2021



(13) Acetone (T)

2.201min (-0.023) 5.67 ug/L m

response 6379

Ion	Exp%	Act%
43.05	100.00	100.00
58.05	20.70	26.98
0.00	0.00	0.00
0.00	0.00	0.00

Data Path : Z:\voasrv\HPCHEM1\MSVOA\_V\Data\VW120721\  
 Data File : VW023818.D  
 Acq On : 07 Dec 2021 13:20  
 Operator : SY/MD  
 Sample : M4879-13  
 Misc : 25.0mL/MSVOA\_V/WATER  
 ALS Vial : 10 Sample Multiplier: 1

Instrument :  
 MSVOA\_V  
 ClientSampleId :  
 C0G70

## Manual IntegrationsAPPROVED

Reviewed By :John Carlone 12/08/2021  
 Supervised By :Mahesh Dadoda 12/08/2021

Quant Time: Dec 08 01:15:12 2021  
 Quant Method : Z:\voasrv\HPCHEM1\MSVOA\_V\Method\SFAMVTR112321WMA.M  
 Quant Title : TRACE VOA SFAM1.0  
 QLast Update : Thu Dec 02 02:08:23 2021  
 Response via : Initial Calibration

Compound	R.T.	QIon	Response	Conc	Units	Dev(Min)
Internal Standards						
1) 1,4-Difluorobenzene	5.619	114	126780	5.000	ug/L	0.00
28) Chlorobenzene-d5	8.853	117	120347	5.000	ug/L	0.00
58) 1,4-Dichlorobenzene-d4	11.249	152	59181	5.000	ug/L	0.00
System Monitoring Compounds						
4) Vinyl Chloride-d3	1.307	65	35355	3.397	ug/L	0.00
Spiked Amount	5.000	Range 40 - 130	Recovery	=	68.000%	
7) Chloroethane-d5	1.568	69	31826	3.890	ug/L	0.00
Spiked Amount	5.000	Range 65 - 130	Recovery	=	77.800%	
11) 1,1-Dichloroethene-d2	2.108	63	53171	2.899	ug/L	0.00
Spiked Amount	5.000	Range 60 - 125	Recovery	=	58.000%#	
20) 2-Butanone-d5	3.905	46	81042	64.774	ug/L	0.00
Spiked Amount	50.000	Range 40 - 130	Recovery	=	129.540%	
24) Chloroform-d	4.352	84	81244	4.483	ug/L	0.00
Spiked Amount	5.000	Range 70 - 125	Recovery	=	89.600%	
26) 1,2-Dichloroethane-d4	5.037	65	39714	4.691	ug/L	0.00
Spiked Amount	5.000	Range 70 - 130	Recovery	=	93.800%	
32) Benzene-d6	5.053	84	154860	4.724	ug/L	0.00
Spiked Amount	5.000	Range 70 - 125	Recovery	=	94.400%	
36) 1,2-Dichloropropane-d6	6.069	67	44355	4.826	ug/L	0.00
Spiked Amount	5.000	Range 60 - 140	Recovery	=	96.600%	
41) Toluene-d8	7.317	98	141911	4.633	ug/L	0.00
Spiked Amount	5.000	Range 70 - 130	Recovery	=	92.600%	
43) trans-1,3-Dichloroprop...	7.625	79	17449	4.710	ug/L	0.00
Spiked Amount	5.000	Range 55 - 130	Recovery	=	94.200%	
46) 2-Hexanone-d5	8.091	63	70617	57.372	ug/L	0.00
Spiked Amount	50.000	Range 45 - 130	Recovery	=	114.740%	
56) 1,1,2,2-Tetrachloroeth...	10.217	84	31198	4.717	ug/L	0.00
Spiked Amount	5.000	Range 65 - 120	Recovery	=	94.400%	
66) 1,2-Dichlorobenzene-d4	11.625	152	58080	5.551	ug/L	0.00
Spiked Amount	5.000	Range 80 - 120	Recovery	=	111.000%	
Target Compounds						
3) Chloromethane	1.240	50	2085	0.199	ug/L	96
13) Acetone	2.201	43	6379m	5.666	ug/L	
42) Toluene	7.400	91	3057	0.082	ug/L	97

AD  
 12/01/21

(#) = qualifier out of range (m) = manual integration (+) = signals summed

Data Path : Z:\voasrv\HPCHEM1\MSVOA\_V\Data\VV120721\  
Data File : VV023818.D  
Acq On : 07 Dec 2021 13:20  
Operator : SY/MD  
Sample : M4879-13  
Misc : 25.0mL/MSVOA\_V/WATER  
ALS Vial : 10 Sample Multiplier: 1

Instrument :  
MSVOA\_V  
ClientSampleId :  
C0G70

Manual IntegrationsAPPROVED

Quant Time: Dec 08 01:15:12 2021  
Quant Method : Z:\voasrv\HPCHEM1\MSVOA\_V\Method\SFAMVTR112321WMA.M  
Quant Title : TRACE VOA SFAM1.0  
QLast Update : Thu Dec 02 02:08:23 2021  
Response via : Initial Calibration

Reviewed By :John Carlone 12/08/2021  
Supervised By :Mahesh Dadoda 12/08/2021

