

# Quantitation Report (Qedit)

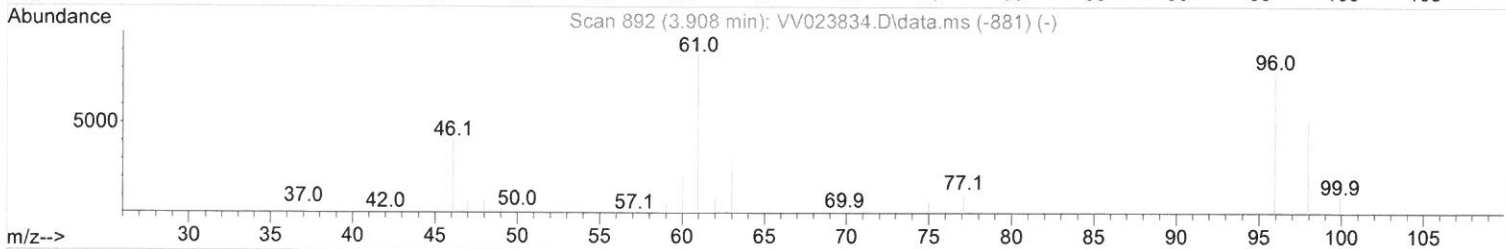
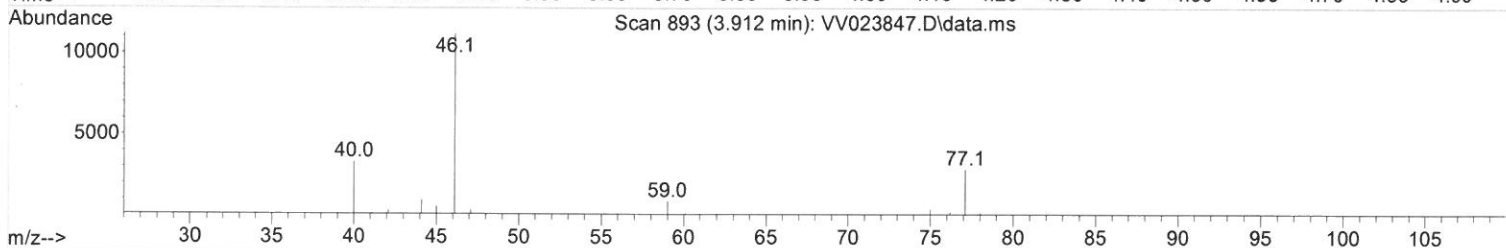
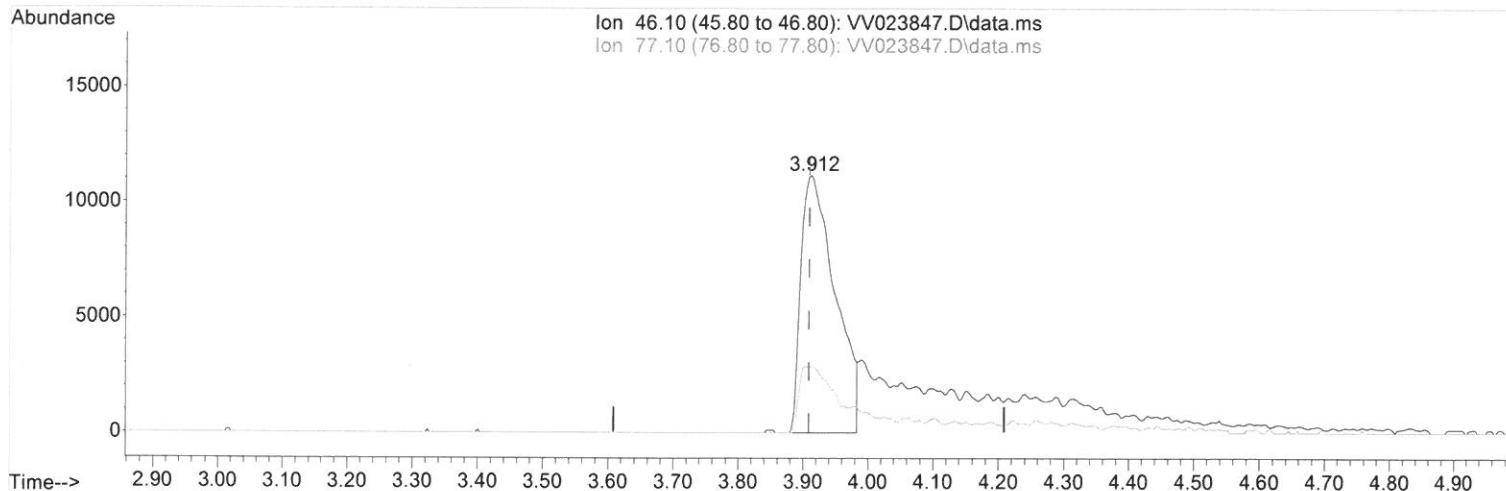
Data Path : Z:\voasrv\HPCHEM1\MSVOA\_V\Data\VV120821\  
 Data File : VV023847.D  
 Acq On : 08 Dec 2021 19:20  
 Operator : SY/MD  
 Sample : M4889-23  
 Misc : 25.0mL/MSVOA\_V/WATER  
 ALS Vial : 15 Sample Multiplier: 1

Instrument :  
 MSVOA\_V  
 ClientSampleId :  
 C0CQ8

Manual IntegrationsAPPROVED

Quant Time: Dec 09 00:35:20 2021  
 Quant Method : Z:\voasrv\HPCHEM1\MSVOA\_V\Method\SFAMVTR112321WMA.M  
 Quant Title : TRACE VOA SFAM1.0  
 QLast Update : Thu Dec 02 02:08:23 2021  
 Response via : Initial Calibration

Reviewed By :John Carlone 12/10/2021  
 Supervised By :Mahesh Dadoda 12/10/2021



TIC: VV023847.D\data.ms

(20) 2-Butanone-d5 (S)

3.912min (+ 0.003) 37.17 ug/L

response 41060

Ion	Exp%	Act%
46.10	100.00	100.00
77.10	9.40	25.35#
0.00	0.00	0.00
0.00	0.00	0.00

# Quantitation Report (Qedit)

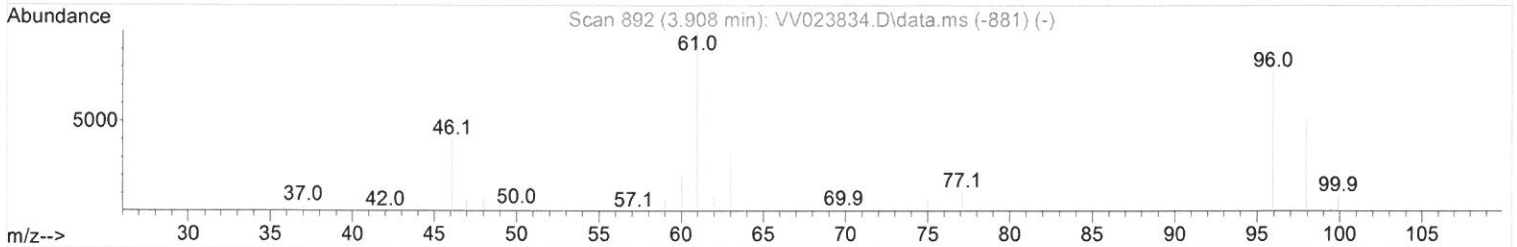
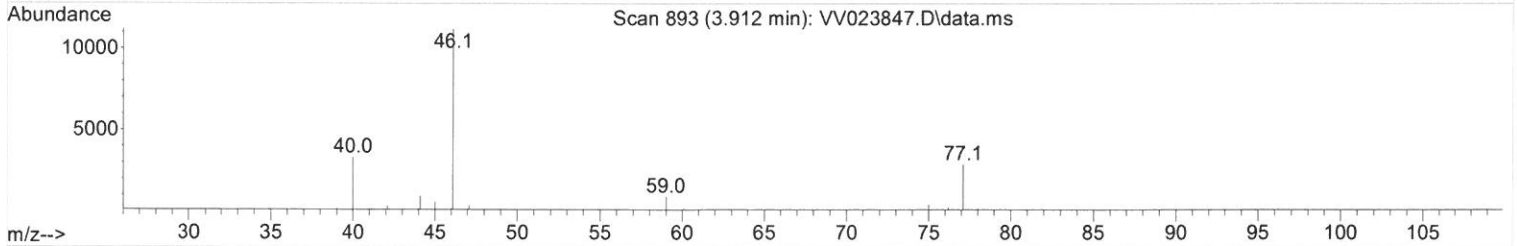
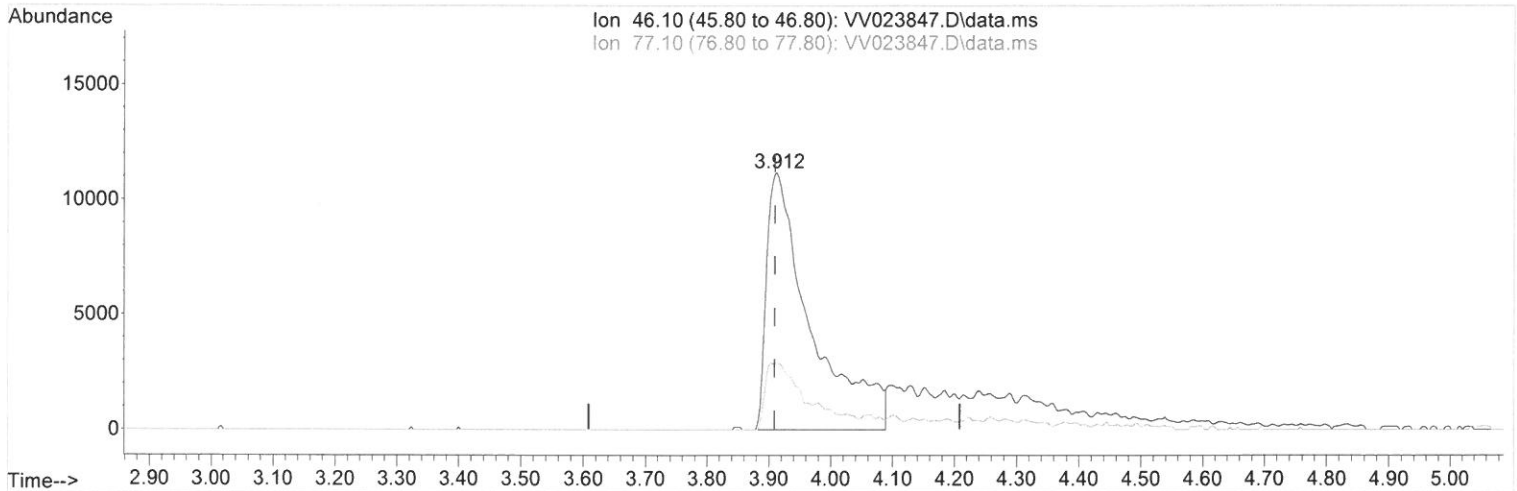
Data Path : Z:\voasrv\HPCHEM1\MSVOA\_V\Data\VV120821\  
 Data File : VV023847.D  
 Acq On : 08 Dec 2021 19:20  
 Operator : SY/MD  
 Sample : M4889-23  
 Misc : 25.0mL/MSVOA\_V/WATER  
 ALS Vial : 15 Sample Multiplier: 1

Instrument :  
 MSVOA\_V  
 ClientSampleId :  
 C0CQ8

Manual IntegrationsAPPROVED

Reviewed By :John Carlone 12/10/2021  
 Supervised By :Mahesh Dadoda 12/10/2021

Quant Time: Dec 09 00:35:20 2021  
 Quant Method : Z:\voasrv\HPCHEM1\MSVOA\_V\Method\SFAMVTR112321WMA.M  
 Quant Title : TRACE VOA SFAM1.0  
 QLast Update : Thu Dec 02 02:08:23 2021  
 Response via : Initial Calibration



TIC: VV023847.D\data.ms

(20) 2-Butanone-d5 (S)

3.912min (+ 0.003) 50.07 ug/L m

response 55304

Ion	Exp%	Act%
46.10	100.00	100.00
77.10	9.40	18.82#
0.00	0.00	0.00
0.00	0.00	0.00

Data Path : Z:\voasrv\HPCHEM1\MSVOA\_V\Data\VW120821\  
 Data File : VW023847.D  
 Acq On : 08 Dec 2021 19:20  
 Operator : SY/MD  
 Sample : M4889-23  
 Misc : 25.0mL/MSVOA\_V/WATER  
 ALS Vial : 15 Sample Multiplier: 1

Instrument :  
 MSVOA\_V  
 ClientSampleId :  
 C0CQ8

## Manual IntegrationsAPPROVED

Reviewed By : John Carlone 12/10/2021  
 Supervised By : Mahesh Dadoda 12/10/2021

Quant Time: Dec 09 00:35:20 2021  
 Quant Method : Z:\voasrv\HPCHEM1\MSVOA\_V\Method\SFAMVTR112321WMA.M  
 Quant Title : TRACE VOA SFAM1.0  
 QLast Update : Thu Dec 02 02:08:23 2021  
 Response via : Initial Calibration

Compound	R.T.	QIon	Response	Conc	Units	Dev(Min)
-----						
Internal Standards						
1) 1,4-Difluorobenzene	5.619	114	111933	5.000	ug/L	0.00
28) Chlorobenzene-d5	8.853	117	108008	5.000	ug/L	0.00
58) 1,4-Dichlorobenzene-d4	11.252	152	53429	5.000	ug/L	0.00
System Monitoring Compounds						
4) Vinyl Chloride-d3	1.307	65	39665	4.317	ug/L	0.00
Spiked Amount 5.000	Range 40 - 130		Recovery = 86.400%			
7) Chloroethane-d5	1.568	69	32592	4.512	ug/L	0.00
Spiked Amount 5.000	Range 65 - 130		Recovery = 90.200%			
11) 1,1-Dichloroethene-d2	2.108	63	54993	3.396	ug/L	0.00
Spiked Amount 5.000	Range 60 - 125		Recovery = 68.000%			
20) 2-Butanone-d5	3.912	46	55304m	50.065	ug/L	0.00
Spiked Amount 50.000	Range 40 - 130		Recovery = 100.140%			
24) Chloroform-d	4.352	84	78434	4.902	ug/L	0.00
Spiked Amount 5.000	Range 70 - 125		Recovery = 98.000%			
26) 1,2-Dichloroethane-d4	5.037	65	38513	5.152	ug/L	0.00
Spiked Amount 5.000	Range 70 - 130		Recovery = 103.000%			
32) Benzene-d6	5.050	84	146951	4.995	ug/L	0.00
Spiked Amount 5.000	Range 70 - 125		Recovery = 99.800%			
36) 1,2-Dichloropropane-d6	6.072	67	42584	5.163	ug/L	0.00
Spiked Amount 5.000	Range 60 - 140		Recovery = 103.200%			
41) Toluene-d8	7.316	98	130203	4.736	ug/L	0.00
Spiked Amount 5.000	Range 70 - 130		Recovery = 94.800%			
43) trans-1,3-Dichloroprop...	7.625	79	16646	5.007	ug/L	0.00
Spiked Amount 5.000	Range 55 - 130		Recovery = 100.200%			
46) 2-Hexanone-d5	8.091	63	74963	67.861	ug/L	0.00
Spiked Amount 50.000	Range 45 - 130		Recovery = 135.720%#			
56) 1,1,2,2-Tetrachloroeth...	10.217	84	32262	5.435	ug/L	0.00
Spiked Amount 5.000	Range 65 - 120		Recovery = 108.800%			
66) 1,2-Dichlorobenzene-d4	11.625	152	52611	5.570	ug/L	0.00
Spiked Amount 5.000	Range 80 - 120		Recovery = 111.400%			
Target Compounds						
31) Carbon tetrachloride	4.834	117	9652	0.747	ug/L	97
42) Toluene	7.400	91	2600	0.078	ug/L	93
-----						

(#) = qualifier out of range (m) = manual integration (+) = signals summed

Data Path : Z:\voasrv\HPCHEM1\MSVOA\_V\Data\VV120821\  
Data File : VV023847.D  
Acq On : 08 Dec 2021 19:20  
Operator : SY/MD  
Sample : M4889-23  
Misc : 25.0mL/MSVOA\_V/WATER  
ALS Vial : 15 Sample Multiplier: 1

Instrument :  
MSVOA\_V  
ClientSampleId :  
C0CQ8

Manual IntegrationsAPPROVED

Quant Time: Dec 09 00:35:20 2021  
Quant Method : Z:\voasrv\HPCHEM1\MSVOA\_V\Method\SFAMVTR112321WMA.M  
Quant Title : TRACE VOA SFAM1.0  
QLast Update : Thu Dec 02 02:08:23 2021  
Response via : Initial Calibration

Reviewed By :John Carlone 12/10/2021  
Supervised By :Mahesh Dadoda 12/10/2021

