

Data Path : Z:\voasrv\HPCHEM1\MSVOA_V\Data\VV120823\
 Data File : VV033193.D
 Acq On : 08 Dec 2023 16:15
 Operator : SY/MD
 Sample : 05685-07
 Misc : 5.0mL/MSVOA_V/WATER
 ALS Vial : 18 Sample Multiplier: 1

Instrument :
 MSVOA_V
 ClientSampleId :
 VHBLK001

Integration Parameters: LSCINT.P

Integrator: RTE
 Smoothing : OFF Filtering: 5
 Sampling : 1 Min Area: 0 % of largest Peak
 Start Thrs: 0.2 Max Peaks: 100
 Stop Thrs : 0 Peak Location: TOP

If leading or trailing edge < 100 prefer < Baseline drop else tangent >
 Peak separation: 5

Method : Z:\voasrv\HPCHEM1\MSVOA_V\Method\SFAMVLM120123WMA.M
 Title : VOC Analysis

Signal : TIC: VV033193.D\data.ms

peak #	R.T. min	first scan	max scan	last scan	PK TY	peak height	corr. area	corr. % max.	% of total
1	1.278	68	74	90	rVB	108358	117669	13.62%	1.672%
2	1.420	108	118	125	rVB4	5545	7719	0.89%	0.110%
3	1.532	146	153	172	rVB	81641	97640	11.30%	1.387%
4	1.725	209	213	215	rBV2	1375	1022	0.12%	0.015%
5	1.799	233	236	239	rBV	1478	1065	0.12%	0.015%
6	1.818	239	242	245	rVV2	1296	890	0.10%	0.013%
7	1.918	267	273	276	rBV2	1142	1244	0.14%	0.018%
8	2.060	306	317	332	rBV	174556	254871	29.50%	3.621%
9	2.156	338	347	348	rBV4	1832	2501	0.29%	0.036%
10	2.179	348	354	357	rVV2	2065	2470	0.29%	0.035%
11	2.230	366	370	371	rBV2	1360	1035	0.12%	0.015%
12	2.243	372	374	379	rVB	1793	1431	0.17%	0.020%
13	2.288	384	388	393	rVV2	1035	1220	0.14%	0.017%
14	2.519	457	460	463	rBV	1663	1108	0.13%	0.016%
15	2.542	463	467	470	rVV	1512	1159	0.13%	0.016%
16	2.716	518	521	524	rBV2	1244	1206	0.14%	0.017%
17	2.828	551	556	559	rBV	1281	1531	0.18%	0.022%
18	3.027	615	618	622	rBV	1755	1491	0.17%	0.021%
19	3.648	808	811	813	rBV2	1182	829	0.10%	0.012%
20	3.732	834	837	842	rBV2	1375	1219	0.14%	0.017%
21	3.780	844	852	871	rBV	53145	128112	14.83%	1.820%
22	3.941	899	902	905	rBV	1475	1073	0.12%	0.015%
23	4.047	932	935	938	rBV	1413	1010	0.12%	0.014%
24	4.249	983	998	1020	rBV3	143387	368039	42.60%	5.229%
25	4.580	1098	1101	1105	rBV4	1020	1083	0.13%	0.015%
26	4.760	1152	1157	1161	rBV	1357	1351	0.16%	0.019%
27	4.957	1202	1218	1243	rBV2	320925	863857	100.00%	12.273%
28	5.150	1274	1278	1282	rVB2	1452	1312	0.15%	0.019%
29	5.317	1328	1330	1332	rBV	1379	801	0.09%	0.011%
30	5.333	1333	1335	1340	rVB	1654	1249	0.14%	0.018%
31	5.368	1340	1346	1348	rBV	1168	1492	0.17%	0.021%
32	5.535	1386	1398	1423	rBV	289531	596822	69.09%	8.479%
33	5.767	1468	1470	1473	rVB	1675	872	0.10%	0.012%
34	5.822	1480	1487	1488	rBV2	9912	8980	1.04%	0.128%
35	5.989	1526	1539	1560	rBV	181404	372735	43.15%	5.296%
36	6.207	1605	1607	1614	rVB	1842	1821	0.21%	0.026%

Data Path : Z:\voasrv\HPCHEM1\MSVOA_V\Data\VW120823\
 Data File : VW033193.D
 Acq On : 08 Dec 2023 16:15
 Operator : SY/MD
 Sample : 05685-07
 Misc : 5.0mL/MSVOA_V/WATER
 ALS Vial : 18 Sample Multiplier: 1

Instrument :
 MSVOA_V
 ClientSampleId :
 VHBLK001

Integration Parameters: LSCINT.P

Integrator: RTE
 Smoothing : OFF Filtering: 5
 Sampling : 1 Min Area: 0 % of largest Peak
 Start Thrs: 0.2 Max Peaks: 100
 Stop Thrs : 0 Peak Location: TOP

If leading or trailing edge < 100 prefer < Baseline drop else tangent >
 Peak separation: 5

Method : Z:\voasrv\HPCHEM1\MSVOA_V\Method\SFAMVLM120123WMA.M
 Title : VOC Analysis

37	6.249	1614	1620	1623	rBV	1875	1915	0.22%	0.027%
38	6.285	1628	1631	1632	rBV	1546	855	0.10%	0.012%
39	6.349	1647	1651	1656	rBV2	1785	1793	0.21%	0.025%
40	6.577	1719	1722	1726	rVB	1426	995	0.12%	0.014%
41	6.912	1817	1826	1845	rBV	103149	192957	22.34%	2.741%
42	7.243	1918	1929	1952	rBV	404721	718043	83.12%	10.202%
43	7.410	1978	1981	1984	rBV3	1425	1310	0.15%	0.019%
44	7.555	2016	2026	2045	rBV2	77563	142841	16.54%	2.029%
45	7.825	2104	2110	2114	rBV3	1353	1909	0.22%	0.027%
46	8.024	2163	2172	2200	rBV	185456	357524	41.39%	5.080%
47	8.587	2344	2347	2354	rVB	2048	1873	0.22%	0.027%
48	8.638	2360	2363	2370	rBV	1650	1728	0.20%	0.025%
49	8.670	2370	2373	2374	rBV	1550	970	0.11%	0.014%
50	8.786	2397	2409	2431	rVV	459144	757583	87.70%	10.763%
51	9.027	2481	2484	2489	rVB2	1847	1380	0.16%	0.020%
52	9.059	2489	2494	2498	rBV2	1256	1810	0.21%	0.026%
53	9.320	2570	2575	2578	rBV	1832	1715	0.20%	0.024%
54	9.471	2619	2622	2625	rBV	1802	999	0.12%	0.014%
55	9.609	2663	2665	2671	rVB	1666	1075	0.12%	0.015%
56	9.683	2686	2688	2692	rBV	1118	954	0.11%	0.014%
57	10.153	2822	2834	2852	rBV	267618	426105	49.33%	6.054%
58	10.220	2853	2855	2858	rVB	1893	984	0.11%	0.014%
59	10.278	2870	2873	2876	rBV	1197	797	0.09%	0.011%
60	10.297	2876	2879	2883	rBV	1662	1605	0.19%	0.023%
61	10.362	2896	2899	2903	rBV	1366	995	0.12%	0.014%
62	10.754	3018	3021	3026	rBV2	1135	1211	0.14%	0.017%
63	11.185	3145	3155	3180	rBV	493109	769005	89.02%	10.926%
64	11.316	3192	3196	3198	rBV	2253	1619	0.19%	0.023%
65	11.403	3220	3223	3226	rBV2	1408	1093	0.13%	0.016%
66	11.480	3244	3247	3251	rBV	1432	1375	0.16%	0.020%
67	11.561	3260	3272	3290	rBV	472731	749513	86.76%	10.649%
68	11.947	3386	3392	3393	rBV	1556	1637	0.19%	0.023%
69	11.988	3402	3405	3408	rBV	1964	1637	0.19%	0.023%
70	12.323	3506	3509	3515	rVB	1673	1431	0.17%	0.020%
71	12.558	3579	3582	3584	rBV	1538	978	0.11%	0.014%
72	12.770	3642	3648	3650	rBV	1631	2043	0.24%	0.029%
73	12.812	3658	3661	3664	rBV	2096	1653	0.19%	0.023%
74	12.850	3670	3673	3676	rBV	1297	1043	0.12%	0.015%
75	12.892	3683	3686	3690	rVB2	1470	939	0.11%	0.013%
76	13.082	3738	3745	3750	rBV	1868	2366	0.27%	0.034%

Data Path : Z:\voasrv\HPCHEM1\MSVOA_V\Data\VW120823\
 Data File : VV033193.D
 Acq On : 08 Dec 2023 16:15
 Operator : SY/MD
 Sample : 05685-07
 Misc : 5.0mL/MSVOA_V/WATER
 ALS Vial : 18 Sample Multiplier: 1

Instrument :
 MSVOA_V
 ClientSampleId :
 VHBLK001

Integration Parameters: LSCINT.P

Integrator: RTE
 Smoothing : OFF
 Sampling : 1
 Start Thrs : 0.2
 Stop Thrs : 0

Filtering: 5
 Min Area: 0 % of largest Peak
 Max Peaks: 100
 Peak Location: TOP

If leading or trailing edge < 100 prefer < Baseline drop else tangent >
 Peak separation: 5

Method : Z:\voasrv\HPCHEM1\MSVOA_V\Method\SFAMVLM120123WMA.M
 Title : VOC Analysis

77	13.233	3790	3792	3797	rVB	1731	1209	0.14%	0.017%
78	13.294	3808	3811	3818	rBV	986	1251	0.14%	0.018%
79	13.426	3849	3852	3855	rBV2	1082	931	0.11%	0.013%
80	13.480	3866	3869	3872	rBV	2169	1470	0.17%	0.021%
81	13.500	3872	3875	3878	rVV	1680	1167	0.14%	0.017%
82	13.532	3883	3885	3891	rVV3	1138	1141	0.13%	0.016%
83	13.593	3901	3904	3909	rVB	2087	1529	0.18%	0.022%
84	13.664	3923	3926	3929	rBV	1446	1104	0.13%	0.016%
85	13.770	3957	3959	3962	rBV	1329	780	0.09%	0.011%
86	13.789	3962	3965	3967	rBV2	1939	1297	0.15%	0.018%
87	13.918	4001	4005	4006	rBV	1280	935	0.11%	0.013%
88	13.992	4024	4028	4030	rBV3	1892	1385	0.16%	0.020%
89	14.046	4042	4045	4049	rBV3	1032	897	0.10%	0.013%
90	14.149	4073	4077	4082	rBV	1551	1808	0.21%	0.026%
91	14.210	4094	4096	4100	rVB	1484	1069	0.12%	0.015%
92	14.342	4134	4137	4140	rBV2	1135	802	0.09%	0.011%
93	14.522	4190	4193	4196	rBV	1278	1130	0.13%	0.016%
94	14.593	4212	4215	4218	rBV	954	949	0.11%	0.013%
95	14.696	4242	4247	4250	rBV	2595	2601	0.30%	0.037%
96	14.895	4304	4309	4314	rBV3	1620	1825	0.21%	0.026%
97	15.278	4425	4428	4432	rBV2	1168	977	0.11%	0.014%
98	15.471	4486	4488	4490	rBV2	1518	912	0.11%	0.013%
99	17.442	5098	5101	5103	rBV2	2413	1821	0.21%	0.026%
100	17.590	5145	5147	5150	rBV3	2521	1379	0.16%	0.020%

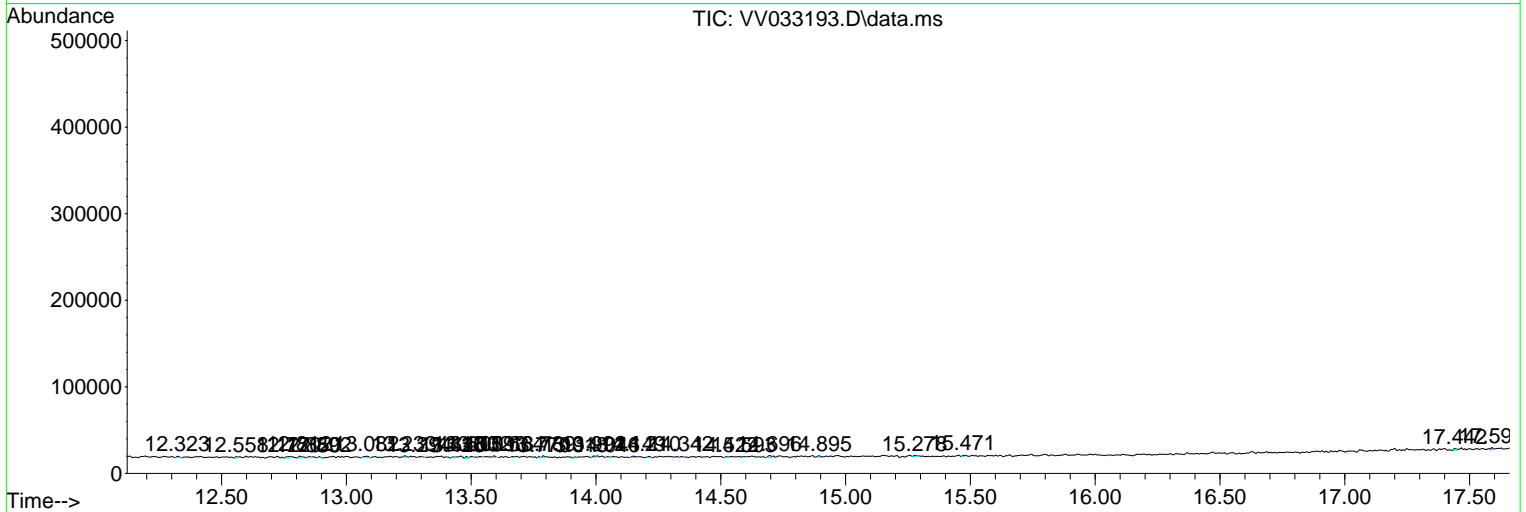
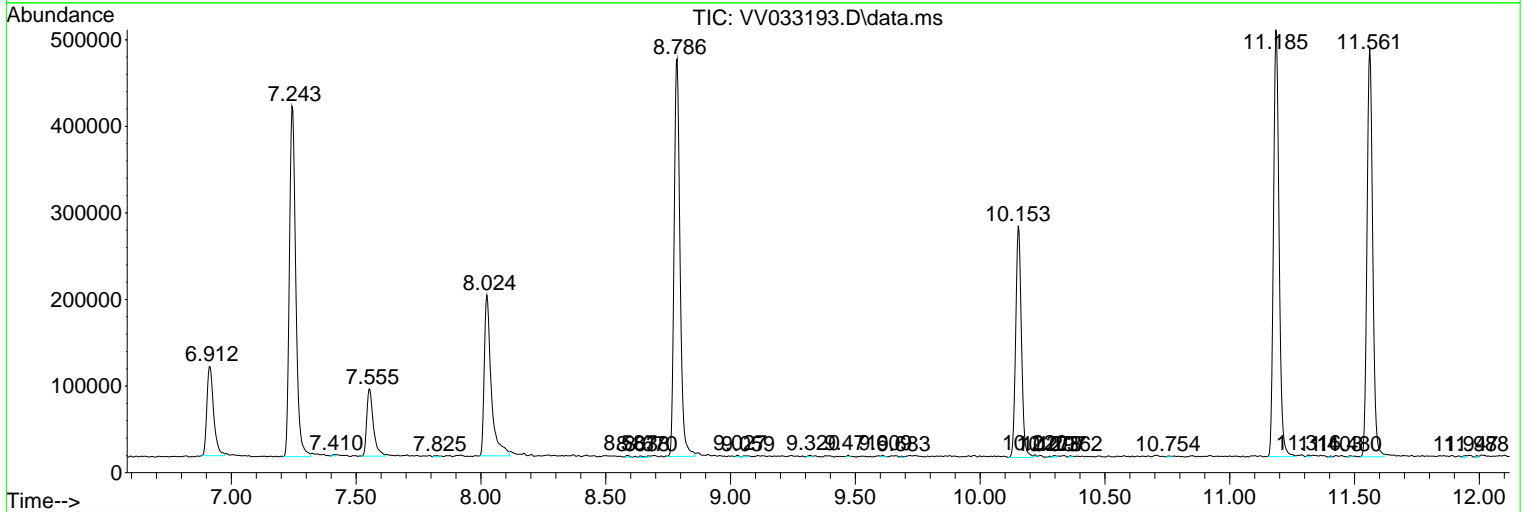
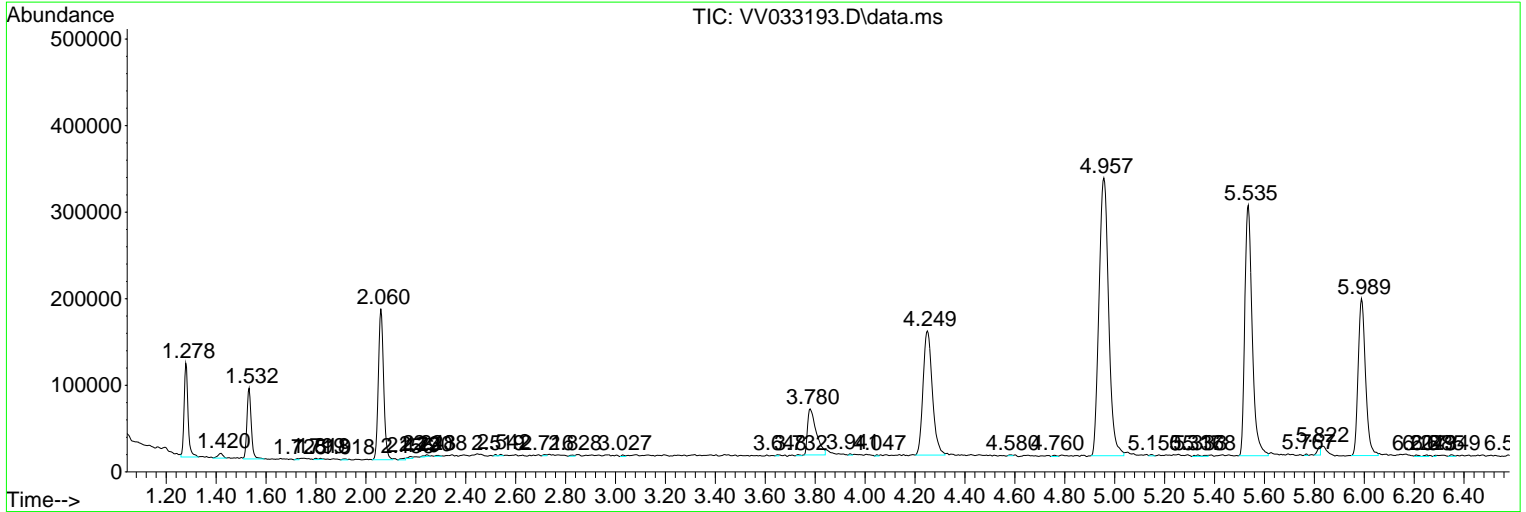
Sum of corrected areas: 7038556

Data Path : Z:\voasrv\HPCHEM1\MSVOA_V\Data\VV120823\
 Data File : VV033193.D
 Acq On : 08 Dec 2023 16:15
 Operator : SY/MD
 Sample : 05685-07
 Misc : 5.0mL/MSVOA_V/WATER
 ALS Vial : 18 Sample Multiplier: 1

Instrument :
 MSVOA_V
 ClientSampleId :
 VHBLK001

Quant Method : Z:\voasrv\HPCHEM1\MSVOA_V\Method\SFAMVLM120123WMA.M
 Quant Title : VOC Analysis

TIC Library : C:\Database\NIST20.L
 TIC Integration Parameters: LSCINT.P



Library Search Compound Report

Data Path : Z:\voasrv\HPCHEM1\MSVOA_V\Data\VV120823\
Data File : VV033193.D
Acq On : 08 Dec 2023 16:15
Operator : SY/MD
Sample : 05685-07
Misc : 5.0mL/MSVOA_V/WATER
ALS Vial : 18 Sample Multiplier: 1

Instrument :
MSVOA_V
ClientSampleId :
VHBLK001

Quant Method : Z:\voasrv\HPCHEM1\MSVOA_V\Method\SFAMVLM120123WMA.M
Quant Title : VOC Analysis

TIC Library : C:\Database\NIST20.L
TIC Integration Parameters: LSCINT.P

No Library Search Compounds Detected

Data Path : Z:\voasrv\HPCHEM1\MSVOA_V\Data\VV120823\
Data File : VV033193.D
Acq On : 08 Dec 2023 16:15
Operator : SY/MD
Sample : 05685-07
Misc : 5.0mL/MSVOA_V/WATER
ALS Vial : 18 Sample Multiplier: 1

Instrument :
MSVOA_V
ClientSampleId :
VHBLK001

Quant Method : Z:\voasrv\HPCHEM1\MSVOA_V\Method\SFAMVLM120123WMA.M
Quant Title : VOC Analysis

TIC Library : C:\Database\NIST0.L
TIC Integration Parameters: LSCINT.P

TIC Top Hit name	RT	EstConc	Units	Response	--Internal Standard--		
					#	RT	Resp Conc
