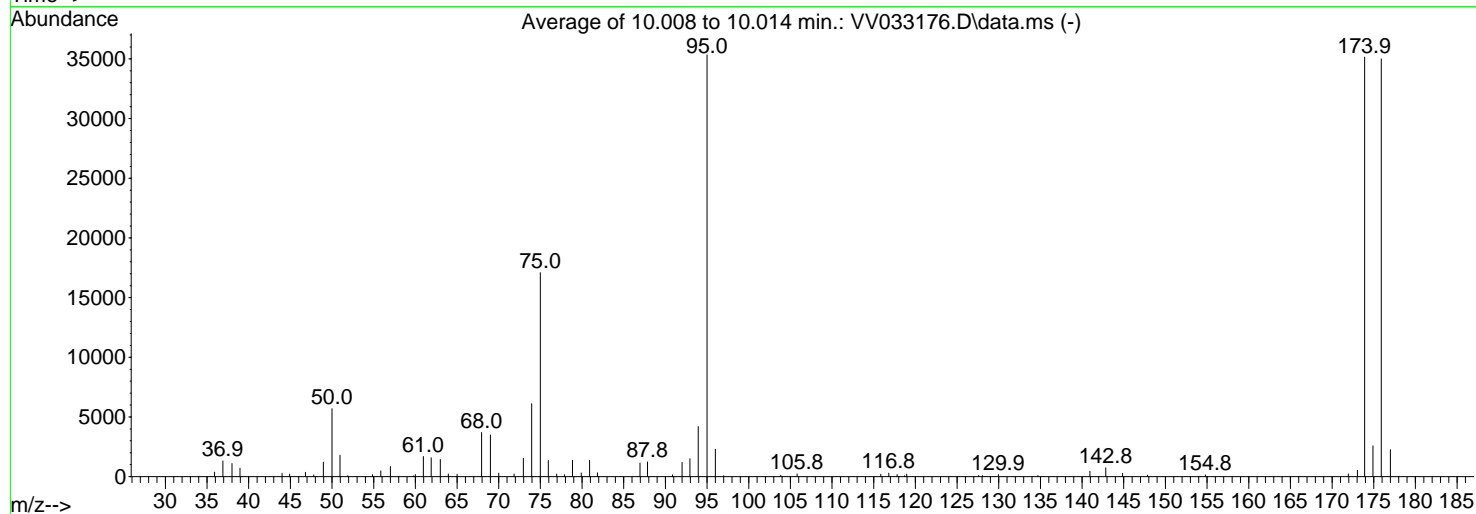
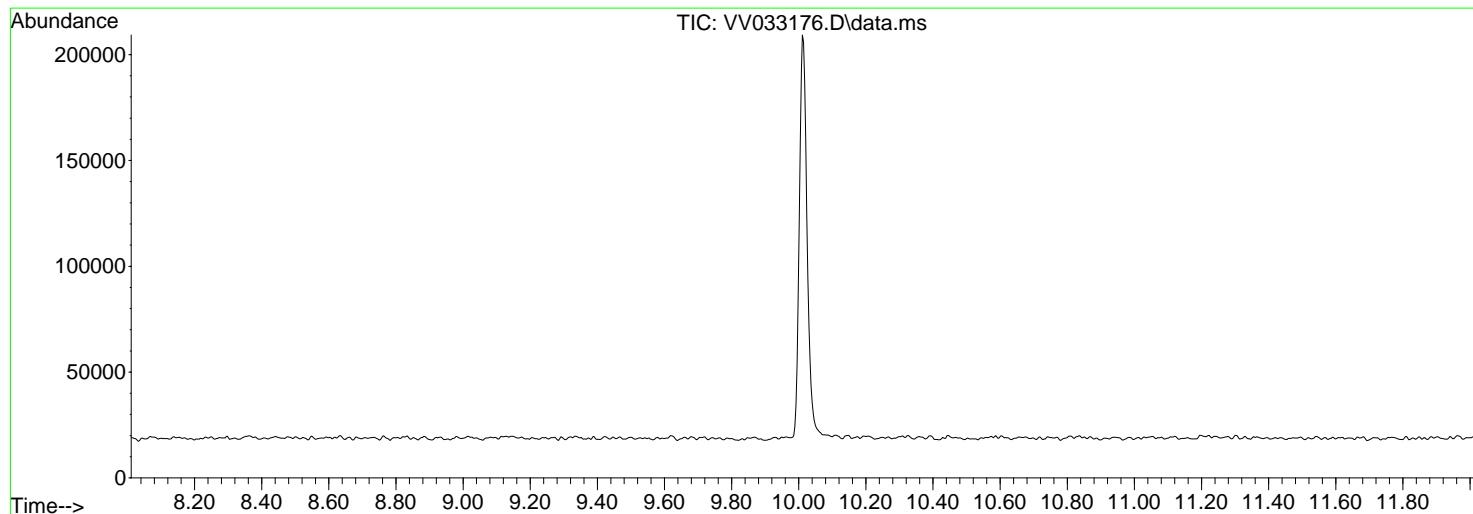


Data Path : Z:\voasrv\HPCHEM1\MSVOA_V\Data\VV120823\
 Data File : VV033176.D
 Acq On : 08 Dec 2023 09:23
 Operator : SY/MD
 Sample : BFB243
 Misc : 5.0mL/MSVOA_V/WATER
 ALS Vial : 1 Sample Multiplier: 1

Instrument :
 MSVOA_V
 ClientSampleId :
 BFB243

Integration File: LSCINT.P

Method : Z:\voasrv\HPCHEM1\MSVOA_V\Method\SFAMVLM120123WMA.M
 Title : VOC Analysis
 Last Update : Fri Dec 08 21:51:12 2023



AutoFind: Scans 2789, 2790, 2791; Background Corrected with Scan 2779

Target Mass	Rel. to Mass	Lower Limit%	Upper Limit%	Rel. Abn%	Raw Abn	Result Pass/Fail
50	95	15	40	16.1	5695	PASS
75	95	30	80	48.4	17096	PASS
95	95	100	100	100.0	35341	PASS
96	95	5	9	6.5	2294	PASS
173	174	0.00	2	1.5	536	PASS
174	95	50	120	99.5	35155	PASS
175	174	5	9	7.4	2591	PASS
176	174	95	105	99.6	35011	PASS
177	176	5	10	6.4	2257	PASS

m/z	Abundance
39.90	18944.0

Instrument :
MSVOA_V
ClientSampleId :
BFB243

m/z	Abundance
35.90	345.0
36.90	1322.0
38.00	1051.0
38.90	788.0
39.90	18744.0
44.00	256.0
44.90	179.0
46.80	376.0
47.80	159.0
49.00	1173.0
50.00	5436.0
50.90	1625.0
51.90	132.0
54.80	126.0
55.80	401.0
57.00	776.0
59.80	202.0
60.90	1589.0
61.90	1544.0
63.00	1387.0
63.90	271.0
65.00	196.0
68.00	3632.0
69.00	3377.0
70.00	339.0
71.90	226.0
73.00	1585.0
73.90	5777.0
75.00	16888.0
76.00	1271.0
77.00	202.0
77.80	168.0
78.90	1290.0
79.90	286.0
80.90	1181.0
81.90	314.0
86.90	1175.0
87.90	1161.0
90.90	168.0
92.00	1117.0
93.00	1400.0
94.00	4089.0
95.00	33696.0
96.00	2154.0
103.80	118.0
105.80	167.0
115.90	222.0
116.80	221.0
117.80	168.0
118.70	233.0
127.60	164.0
128.00	129.0
129.90	127.0
140.90	456.0
142.90	652.0
144.90	238.0
147.90	152.0
154.80	109.0
171.90	164.0
173.10	490.0
173.90	32792.0
174.90	2481.0
175.90	32360.0
177.00	2032.0

Instrument :
MSVOA_V
ClientSampleId :
BFB243

m/z	Abundance
35.90	421.0
36.90	1379.0
38.00	1105.0
39.00	714.0
39.90	18672.0
44.00	300.0
44.90	207.0
46.80	390.0
47.80	158.0
48.90	1283.0
50.00	5989.0
51.00	1831.0
51.90	109.0
54.80	170.0
55.90	503.0
57.00	881.0
60.00	232.0
60.90	1780.0
61.90	1594.0
63.00	1500.0
64.00	226.0
65.00	202.0
67.90	3841.0
69.00	3637.0
70.00	304.0
71.80	247.0
73.00	1537.0
74.00	6295.0
75.00	17624.0
75.90	1368.0
77.00	237.0
77.90	153.0
78.90	1384.0
79.90	316.0
80.90	1362.0
81.80	338.0
86.90	1098.0
87.80	1281.0
90.80	137.0
92.00	1264.0
92.90	1583.0
94.00	4260.0
95.00	36624.0
96.00	2379.0
97.00	117.0
103.80	127.0
105.80	246.0
115.90	210.0
116.80	305.0
117.80	177.0
118.90	283.0
127.60	115.0
128.10	113.0
129.90	182.0
134.70	131.0
141.00	450.0
142.80	764.0
144.80	272.0
147.80	144.0
154.80	156.0
172.00	228.0
173.00	562.0
173.90	36336.0
174.90	2685.0
175.90	36440.0
177.00	2327.0

Instrument :
MSVOA_V
ClientSampleId :
BFB243

m/z	Abundance
35.90	382.0
36.90	1234.0
38.00	1145.0
38.90	617.0
39.90	18584.0
44.00	305.0
44.90	268.0
46.80	305.0
47.80	148.0
48.90	1218.0
50.00	5660.0
51.00	1947.0
54.90	216.0
55.90	549.0
57.00	895.0
60.00	279.0
61.00	1704.0
61.90	1601.0
63.00	1427.0
64.00	207.0
65.00	220.0
67.90	3610.0
69.00	3463.0
70.00	228.0
71.80	233.0
72.90	1455.0
74.00	6258.0
75.00	16776.0
76.00	1441.0
76.90	201.0
78.00	161.0
78.80	1414.0
79.90	330.0
80.90	1511.0
81.80	301.0
87.00	1140.0
87.80	1259.0
90.90	132.0
92.00	1190.0
92.90	1538.0
93.90	4252.0
95.00	35704.0
96.00	2348.0
97.00	125.0
103.90	128.0
105.80	277.0
115.80	163.0
116.80	352.0
117.80	174.0
119.00	371.0
130.00	207.0
134.70	145.0
141.00	445.0
142.80	783.0
144.80	283.0
147.80	124.0
154.80	172.0
172.00	296.0
173.00	555.0
173.90	36336.0
174.90	2607.0
175.90	36232.0
177.00	2412.0

Instrument :
MSVOA_V
ClientSampleId :
BFB243