

Data Path : Z:\voasrv\HPCHEM1\MSVOA\_V\Data\VW120922\  
 Data File : VW029566.D  
 Acq On : 10 Dec 2022 09:22  
 Operator : SY/MD  
 Sample : N5929-03  
 Misc : 5.0mL/MSVOA\_V/WATER  
 ALS Vial : 60 Sample Multiplier: 1

Instrument :  
 MSVOA\_V  
 ClientSampleId :  
 EXZ98

Quant Time: Dec 12 00:03:47 2022  
 Quant Method : Z:\voasrv\HPCHEM1\MSVOA\_V\Method\SFAMVLM120722WMA.M  
 Quant Title : VOC Analysis  
 QLast Update : Sat Dec 10 07:45:47 2022  
 Response via : Initial Calibration

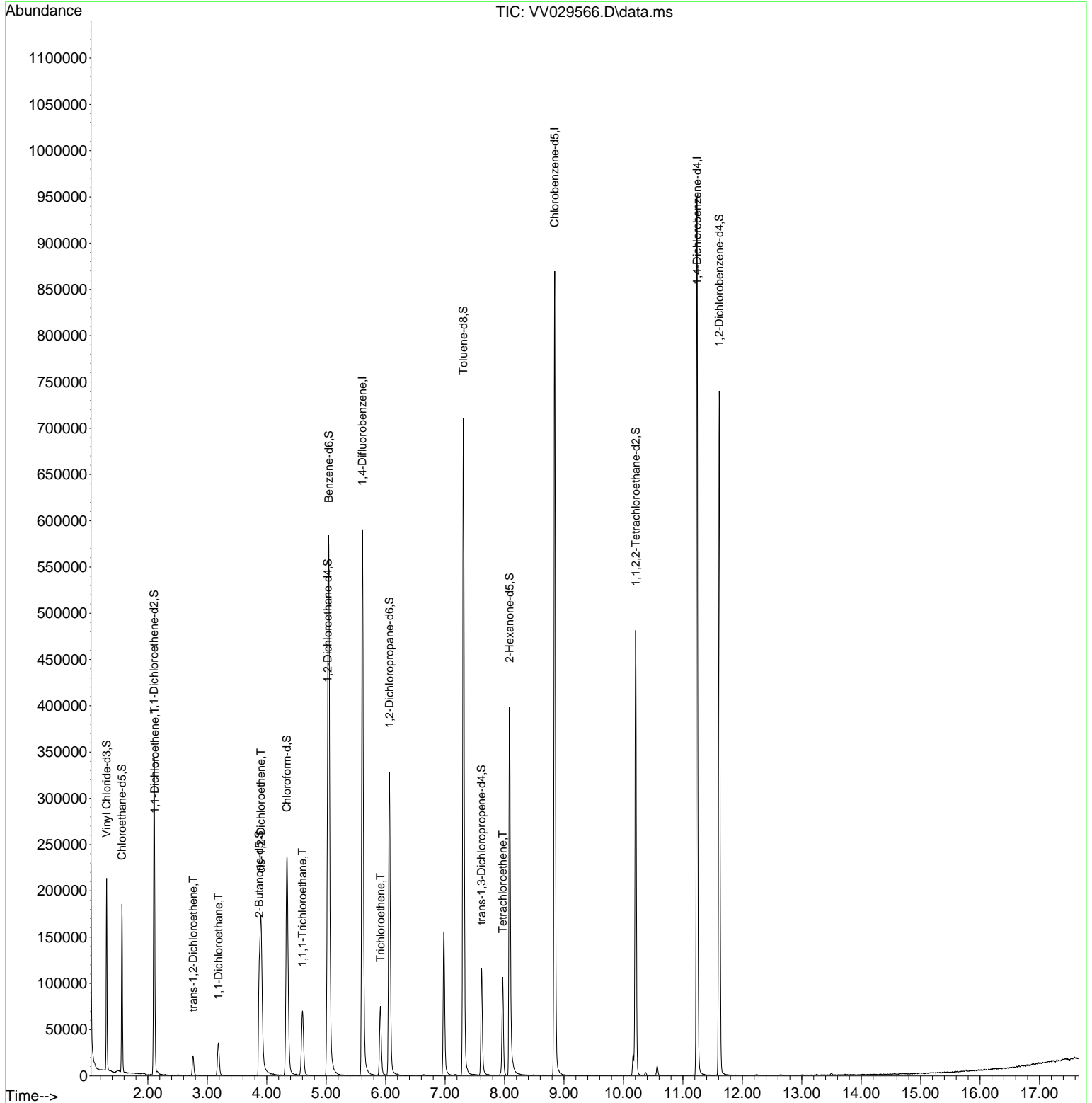
Compound	R.T.	QIon	Response	Conc	Units	Dev(Min)
-----						
Internal Standards						
1) 1,4-Difluorobenzene	5.609	114	543212	50.000	ug/L	0.00
28) Chlorobenzene-d5	8.844	117	504239	50.000	ug/L	0.00
58) 1,4-Dichlorobenzene-d4	11.239	152	257703	50.000	ug/L	0.00
System Monitoring Compounds						
4) Vinyl Chloride-d3	1.304	65	132166	39.732	ug/L	0.00
Spiked Amount	50.000	Range 60 - 135	Recovery =	79.460%		
7) Chloroethane-d5	1.564	69	113695	44.824	ug/L	0.00
Spiked Amount	50.000	Range 70 - 130	Recovery =	89.640%		
11) 1,1-Dichloroethene-d2	2.105	63	177248	34.163	ug/L	0.00
Spiked Amount	50.000	Range 60 - 125	Recovery =	68.320%		
21) 2-Butanone-d5	3.873	46	182933	90.151	ug/L	0.00
Spiked Amount	100.000	Range 40 - 130	Recovery =	90.150%		
24) Chloroform-d	4.339	84	258231	41.253	ug/L	0.00
Spiked Amount	50.000	Range 70 - 125	Recovery =	82.500%		
26) 1,2-Dichloroethane-d4	5.024	65	155260	43.428	ug/L	0.00
Spiked Amount	50.000	Range 70 - 125	Recovery =	86.860%		
32) Benzene-d6	5.043	84	560211	42.046	ug/L	0.00
Spiked Amount	50.000	Range 70 - 125	Recovery =	84.100%		
36) 1,2-Dichloropropane-d6	6.063	67	171718	42.194	ug/L	0.00
Spiked Amount	50.000	Range 70 - 120	Recovery =	84.380%		
41) Toluene-d8	7.307	98	500627	39.878	ug/L	0.00
Spiked Amount	50.000	Range 80 - 120	Recovery =	79.760%#		
43) trans-1,3-Dichloroprop...	7.612	79	66698	32.455	ug/L	0.00
Spiked Amount	50.000	Range 60 - 125	Recovery =	64.920%		
47) 2-Hexanone-d5	8.085	63	150336	86.505	ug/L	0.00
Spiked Amount	100.000	Range 45 - 130	Recovery =	86.500%		
56) 1,1,2,2-Tetrachloroeth...	10.207	84	241659	41.553	ug/L	0.00
Spiked Amount	50.000	Range 65 - 120	Recovery =	83.100%		
66) 1,2-Dichlorobenzene-d4	11.612	152	202086	41.194	ug/L	0.00
Spiked Amount	50.000	Range 80 - 120	Recovery =	82.380%		
-----						
Target Compounds						Qvalue
12) 1,1-Dichloroethene	2.114	96	4112	1.416	ug/L #	1
17) trans-1,2-Dichloroethene	2.761	96	8731	2.610	ug/L	96
19) 1,1-Dichloroethane	3.185	63	36834	6.427	ug/L	99
20) cis-1,2-Dichloroethene	3.902	96	80578	21.903	ug/L	95
30) 1,1,1-Trichloroethane	4.600	97	58781	10.700	ug/L	98
34) Trichloroethene	5.912	95	26995	7.579	ug/L	99
46) Tetrachloroethene	7.969	164	25556	8.925	ug/L	94
-----						

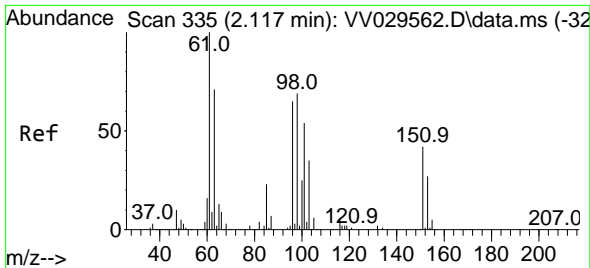
(#) = qualifier out of range (m) = manual integration (+) = signals summed

Data Path : Z:\voasrv\HPCHEM1\MSVOA\_V\Data\VV120922\  
 Data File : VV029566.D  
 Acq On : 10 Dec 2022 09:22  
 Operator : SY/MD  
 Sample : N5929-03  
 Misc : 5.0mL/MSVOA\_V/WATER  
 ALS Vial : 60 Sample Multiplier: 1

Instrument :  
 MSVOA\_V  
 ClientSampleId :  
 EXZ98

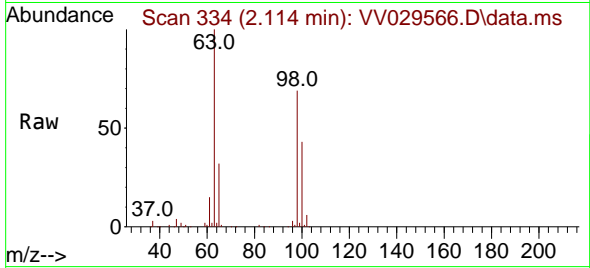
Quant Time: Dec 12 00:03:47 2022  
 Quant Method : Z:\voasrv\HPCHEM1\MSVOA\_V\Method\SFAMVLM120722WMA.M  
 Quant Title : VOC Analysis  
 QLast Update : Sat Dec 10 07:45:47 2022  
 Response via : Initial Calibration



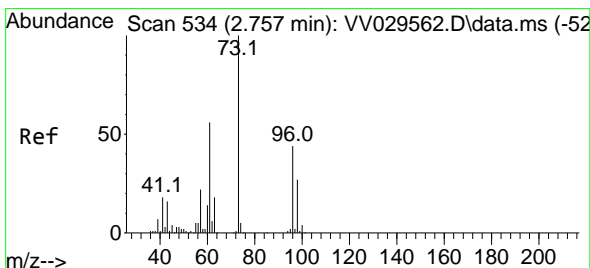
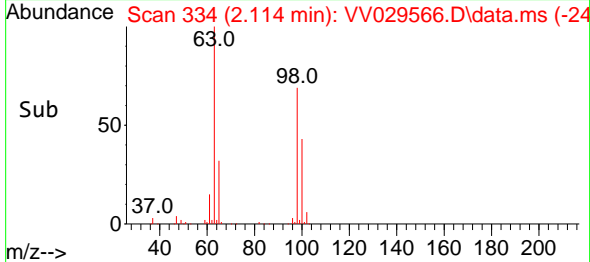
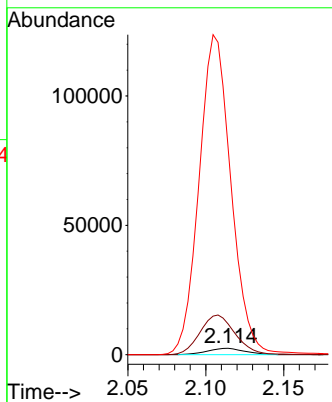


#12  
 1,1-Dichloroethene  
 Concen: 1.416 ug/L  
 RT: 2.114 min Scan# 311  
 Delta R.T. -0.003 min  
 Lab File: VV029566.D  
 Acq: 10 Dec 2022 09:22

Instrument : MSVOA\_V  
 ClientSampleId : EXZ98

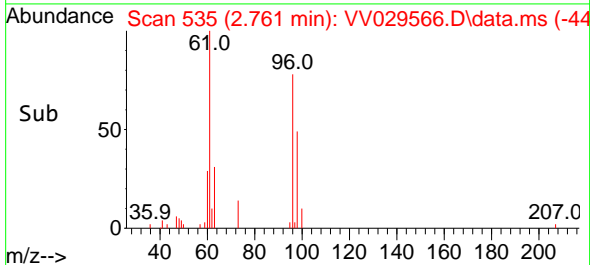
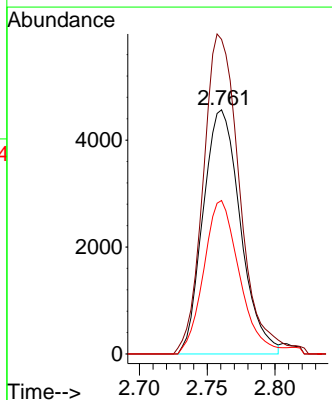
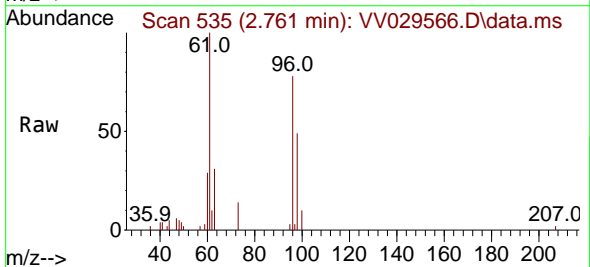


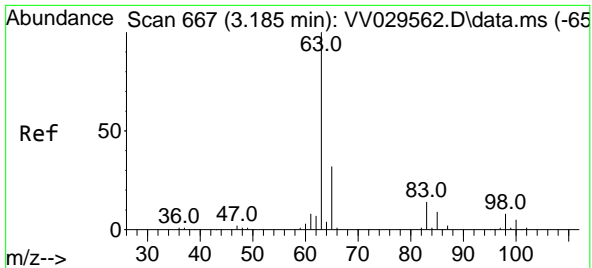
Tgt Ion: 96 Resp: 4112  
 Ion Ratio Lower Upper  
 96 100  
 61 482.5 103.3 191.9#  
 63 3254.0 77.3 143.7#



#17  
 trans-1,2-Dichloroethene  
 Concen: 2.610 ug/L  
 RT: 2.761 min Scan# 535  
 Delta R.T. 0.003 min  
 Lab File: VV029566.D  
 Acq: 10 Dec 2022 09:22

Tgt Ion: 96 Resp: 8731  
 Ion Ratio Lower Upper  
 96 100  
 61 128.8 86.4 160.4  
 98 62.8 43.4 80.6



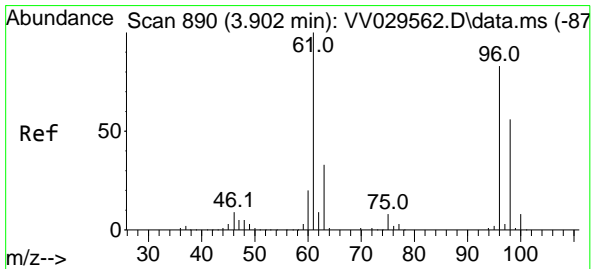
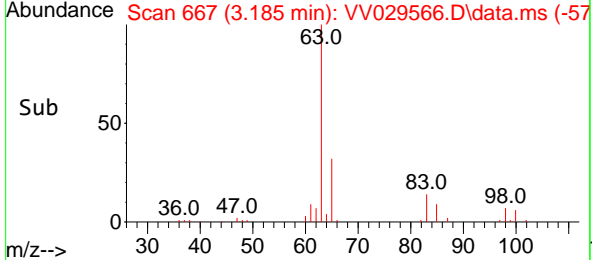
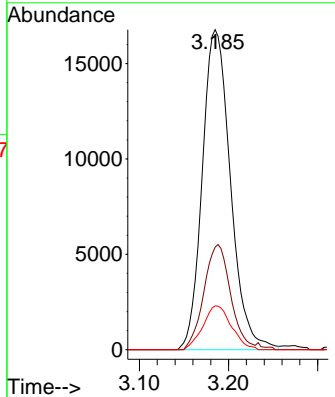
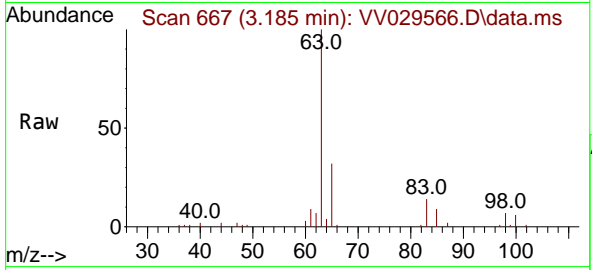


#19  
 1,1-Dichloroethane  
 Concen: 6.427 ug/L  
 RT: 3.185 min Scan# 60  
 Delta R.T. 0.000 min  
 Lab File: VV029566.D  
 Acq: 10 Dec 2022 09:22

Instrument : MSVOA\_V  
 ClientSampleId : EXZ98

Tgt Ion: 63 Resp: 36834

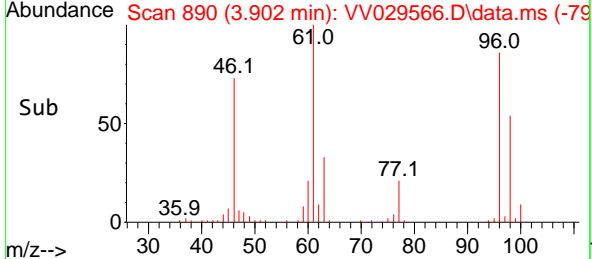
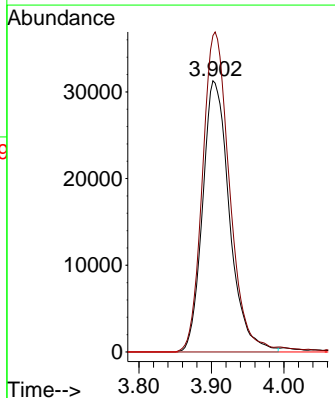
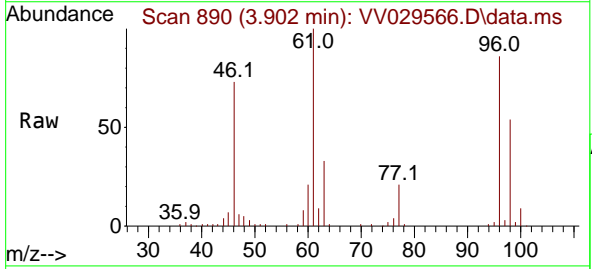
Ion	Ratio	Lower	Upper
63	100		
65	32.0	22.5	41.7
83	13.7	10.4	19.2

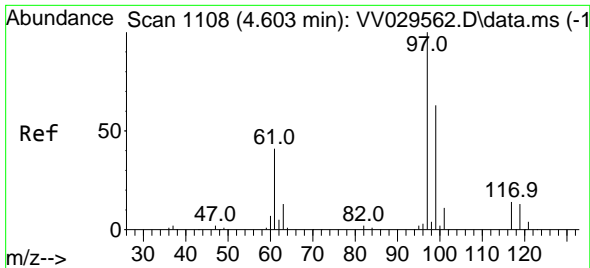


#20  
 cis-1,2-Dichloroethene  
 Concen: 21.903 ug/L  
 RT: 3.902 min Scan# 890  
 Delta R.T. 0.000 min  
 Lab File: VV029566.D  
 Acq: 10 Dec 2022 09:22

Tgt Ion: 96 Resp: 80578

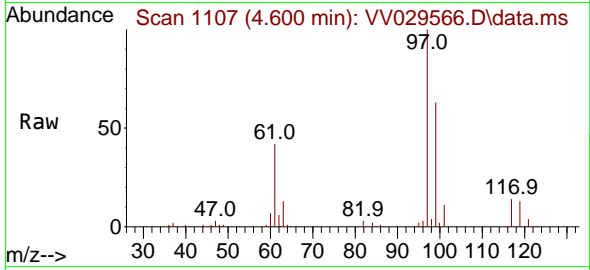
Ion	Ratio	Lower	Upper
96	100		
61	116.6	78.0	144.9
68	0.0	0.0	0.0





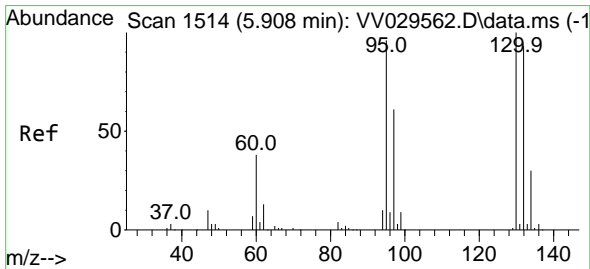
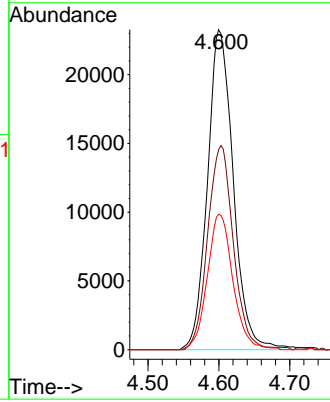
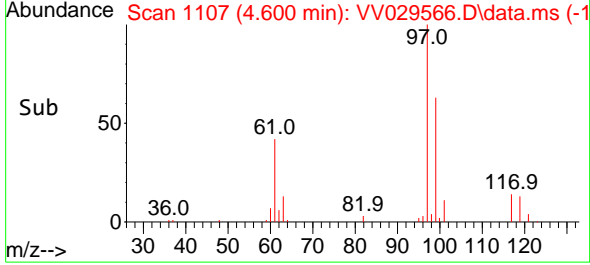
#30  
 1,1,1-Trichloroethane  
 Concen: 10.700 ug/L  
 RT: 4.600 min Scan# 1108  
 Delta R.T. -0.003 min  
 Lab File: VV029566.D  
 Acq: 10 Dec 2022 09:22

Instrument : MSVOA\_V  
 ClientSampleId : EXZ98

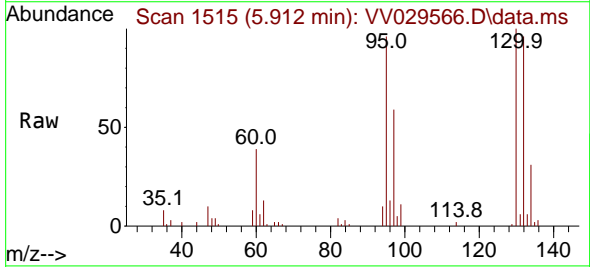


Tgt Ion: 97 Resp: 58781

Ion	Ratio	Lower	Upper
97	100		
99	63.6	52.1	78.1
61	41.6	31.8	47.8

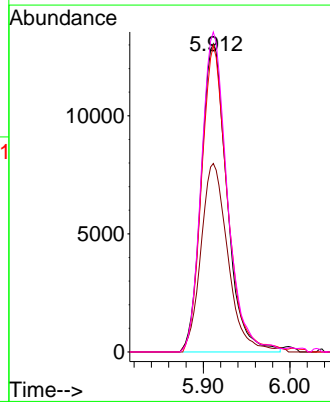
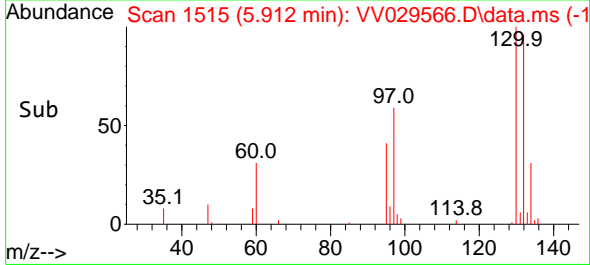


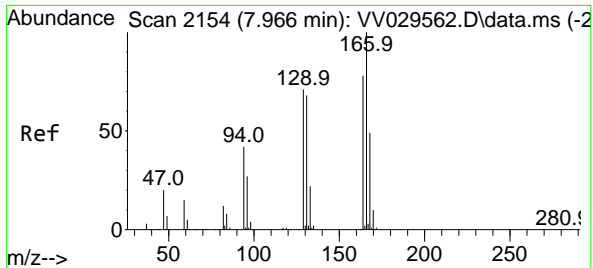
#34  
 Trichloroethene  
 Concen: 7.579 ug/L  
 RT: 5.912 min Scan# 1515  
 Delta R.T. 0.003 min  
 Lab File: VV029566.D  
 Acq: 10 Dec 2022 09:22



Tgt Ion: 95 Resp: 26995

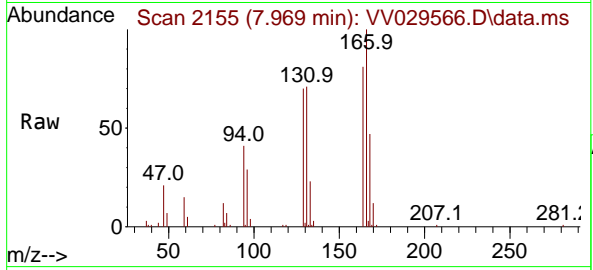
Ion	Ratio	Lower	Upper
95	100		
97	61.2	44.0	81.8
132	99.4	69.9	129.9
130	103.8	73.7	136.9





#46  
 Tetrachloroethene  
 Concen: 8.925 ug/L  
 RT: 7.969 min Scan# 2155  
 Delta R.T. 0.003 min  
 Lab File: VV029566.D  
 Acq: 10 Dec 2022 09:22

Instrument : MSVOA\_V  
 ClientSampleId : EXZ98



Tgt Ion:164 Resp: 25556

Ion	Ratio	Lower	Upper
164	100		
129	85.7	65.3	121.3
131	87.6	63.1	117.1
166	123.0	90.8	168.6

