

Data Path : Z:\voasrv\HPCHEM1\MSVOA_V\Data\VW120922\
 Data File : VW029541.D
 Acq On : 09 Dec 2022 23:11
 Operator : SY/MD
 Sample : N5959-16
 Misc : 5.0mL/MSVOA_V/WATER
 ALS Vial : 34 Sample Multiplier: 1

Instrument :
 MSVOA_V
 ClientSampleId :
 COEM2

Integration Parameters: LSCINT.P

Integrator: RTE
 Smoothing : OFF
 Sampling : 1
 Start Thrs : 0.2
 Stop Thrs : 0

Filtering: 5
 Min Area: 0 % of largest Peak
 Max Peaks: 100
 Peak Location: TOP

If leading or trailing edge < 100 prefer < Baseline drop else tangent >
 Peak separation: 5

Method : Z:\voasrv\HPCHEM1\MSVOA_V\Method\SFAMVLM120722WMA.M
 Title : VOC Analysis

Signal : TIC: VW029541.D\data.ms

peak #	R.T. min	first scan	max scan	last scan	PK TY	peak height	corr. area	corr. % max.	% of total
1	1.304	76	82	99	rVB	222428	217529	14.31%	1.793%
2	1.565	155	163	178	rVB	178370	201914	13.28%	1.664%
3	2.105	321	331	344	rBV	342598	492258	32.38%	4.057%
4	2.449	435	438	440	rBV3	494	258	0.02%	0.002%
5	2.539	463	466	468	rBV2	341	185	0.01%	0.002%
6	2.561	471	473	476	rBV3	289	151	0.01%	0.001%
7	2.841	558	560	563	rBV2	173	144	0.01%	0.001%
8	2.912	580	582	583	rBV	122	29	0.00%	0.000%
9	3.146	653	655	656	rBV	217	97	0.01%	0.001%
10	3.262	689	691	693	rBV	180	71	0.00%	0.001%
11	3.375	723	726	730	rBV	131	104	0.01%	0.001%
12	3.404	733	735	739	rVV2	149	62	0.00%	0.001%
13	3.510	766	768	773	rBV	296	209	0.01%	0.002%
14	3.606	795	798	800	rBV	165	102	0.01%	0.001%
15	3.822	862	865	866	rBV	148	70	0.00%	0.001%
16	3.873	872	881	917	rBV	109754	307464	20.23%	2.534%
17	4.339	1010	1026	1050	rBV	231709	575075	37.83%	4.739%
18	4.626	1112	1115	1119	rBV2	281	249	0.02%	0.002%
19	4.651	1121	1123	1125	rBV	161	67	0.00%	0.001%
20	4.767	1156	1159	1163	rBV2	231	215	0.01%	0.002%
21	5.040	1226	1244	1292	rBV2	576192	1520054	100.00%	12.527%
22	5.391	1349	1353	1355	rBV2	354	281	0.02%	0.002%
23	5.507	1387	1389	1391	rBV2	254	99	0.01%	0.001%
24	5.535	1395	1398	1403	rBV3	118	126	0.01%	0.001%
25	5.558	1403	1405	1408	rBV2	203	148	0.01%	0.001%
26	5.609	1409	1421	1460	rBV	518215	1070832	70.45%	8.825%
27	5.908	1503	1514	1529	rVB7	8059	17829	1.17%	0.147%
28	6.063	1548	1562	1600	rBV	327651	673024	44.28%	5.547%
29	6.310	1637	1639	1640	rBV	149	67	0.00%	0.001%
30	6.320	1640	1642	1647	rVV2	230	177	0.01%	0.001%
31	6.378	1657	1660	1666	rBV2	136	161	0.01%	0.001%
32	6.535	1707	1709	1715	rVB2	333	293	0.02%	0.002%
33	6.577	1715	1722	1723	rBV	204	208	0.01%	0.002%
34	6.606	1729	1731	1732	rBV	143	80	0.01%	0.001%
35	6.625	1732	1737	1740	rBV3	897	959	0.06%	0.008%
36	6.683	1753	1755	1760	rVB2	434	311	0.02%	0.003%

Data Path : Z:\voasrv\HPCHEM1\MSVOA_V\Data\VW120922\
 Data File : VW029541.D
 Acq On : 09 Dec 2022 23:11
 Operator : SY/MD
 Sample : N5959-16
 Misc : 5.0mL/MSVOA_V/WATER
 ALS Vial : 34 Sample Multiplier: 1

Instrument :
 MSVOA_V
 ClientSampleId :
 COEM2

Integration Parameters: LSCINT.P

Integrator: RTE
 Smoothing : OFF
 Sampling : 1
 Start Thrs: 0.2
 Stop Thrs : 0

Filtering: 5
 Min Area: 0 % of largest Peak
 Max Peaks: 100
 Peak Location: TOP

If leading or trailing edge < 100 prefer < Baseline drop else tangent >
 Peak separation: 5

Method : Z:\voasrv\HPCHEM1\MSVOA_V\Method\SFAMVLM120722WMA.M
 Title : VOC Analysis

37	6.719	1765	1766	1770	rVB2	186	63	0.00%	0.001%
38	6.748	1770	1775	1776	rBV	212	131	0.01%	0.001%
39	6.789	1785	1788	1791	rVB	204	107	0.01%	0.001%
40	6.809	1791	1794	1796	rVB2	290	121	0.01%	0.001%
41	6.841	1801	1804	1808	rBV	302	206	0.01%	0.002%
42	6.873	1811	1814	1817	rBV3	368	302	0.02%	0.002%
43	6.905	1822	1824	1827	rVB2	391	142	0.01%	0.001%
44	6.979	1836	1847	1880	rBV	156275	288375	18.97%	2.377%
45	7.227	1922	1924	1925	rBV	347	139	0.01%	0.001%
46	7.310	1936	1950	1990	rBV	707386	1255334	82.58%	10.346%
47	7.616	2035	2045	2067	rBV	106780	190170	12.51%	1.567%
48	8.085	2179	2191	2227	rBV	410914	741554	48.78%	6.112%
49	8.651	2365	2367	2369	rVB2	300	138	0.01%	0.001%
50	8.670	2369	2373	2375	rVB2	397	256	0.02%	0.002%
51	8.686	2375	2378	2381	rBV2	437	355	0.02%	0.003%
52	8.722	2387	2389	2390	rBV	263	99	0.01%	0.001%
53	8.793	2409	2411	2413	rBV	298	81	0.01%	0.001%
54	8.844	2413	2427	2464	rBV	769307	1273004	83.75%	10.491%
55	9.137	2513	2518	2521	rBV2	888	885	0.06%	0.007%
56	9.239	2547	2550	2552	rVB	231	112	0.01%	0.001%
57	9.265	2552	2558	2562	rVB3	397	418	0.03%	0.003%
58	9.294	2562	2567	2570	rBV3	315	338	0.02%	0.003%
59	9.329	2574	2578	2580	rBV2	239	169	0.01%	0.001%
60	9.342	2580	2582	2586	rBV2	171	84	0.01%	0.001%
61	9.391	2594	2597	2600	rBV	330	246	0.02%	0.002%
62	9.452	2612	2616	2618	rBV2	190	158	0.01%	0.001%
63	9.603	2661	2663	2665	rBV2	176	93	0.01%	0.001%
64	9.818	2727	2730	2731	rBV2	151	89	0.01%	0.001%
65	9.866	2742	2745	2750	rBV2	381	291	0.02%	0.002%
66	9.911	2757	2759	2760	rBV	162	61	0.00%	0.001%
67	9.953	2770	2772	2775	rBV	241	139	0.01%	0.001%
68	10.162	2828	2837	2841	rBV2	24111	33961	2.23%	0.280%
69	10.207	2842	2851	2867	rVB	474822	744961	49.01%	6.140%
70	10.374	2897	2903	2914	rVB4	3883	6281	0.41%	0.052%
71	10.419	2914	2917	2920	rVB	219	109	0.01%	0.001%
72	10.465	2929	2931	2933	rBV	275	156	0.01%	0.001%
73	10.510	2943	2945	2947	rBV2	348	177	0.01%	0.001%
74	10.529	2947	2951	2954	rVV3	679	700	0.05%	0.006%
75	10.567	2955	2963	2977	rVB2	11319	18241	1.20%	0.150%
76	10.712	3006	3008	3011	rBV2	204	171	0.01%	0.001%

Data Path : Z:\voasrv\HPCHEM1\MSVOA_V\Data\VW120922\
 Data File : VW029541.D
 Acq On : 09 Dec 2022 23:11
 Operator : SY/MD
 Sample : N5959-16
 Misc : 5.0mL/MSVOA_V/WATER
 ALS Vial : 34 Sample Multiplier: 1

Instrument :
 MSVOA_V
 ClientSampleId :
 C0EM2

Integration Parameters: LSCINT.P

Integrator: RTE
 Smoothing : OFF Filtering: 5
 Sampling : 1 Min Area: 0 % of largest Peak
 Start Thrs: 0.2 Max Peaks: 100
 Stop Thrs : 0 Peak Location: TOP

If leading or trailing edge < 100 prefer < Baseline drop else tangent >
 Peak separation: 5

Method : Z:\voasrv\HPCHEM1\MSVOA_V\Method\SFAMVLM120722WMA.M
 Title : VOC Analysis

77	10.908	3064	3069	3080	rVB3	904	1263	0.08%	0.010%
78	11.011	3099	3101	3104	rBV2	240	154	0.01%	0.001%
79	11.066	3116	3118	3122	rBV	257	198	0.01%	0.002%
80	11.239	3159	3172	3195	rBV	844996	1312617	86.35%	10.818%
81	11.474	3243	3245	3246	rBV	289	124	0.01%	0.001%
82	11.551	3262	3269	3276	rBV6	1691	2795	0.18%	0.023%
83	11.612	3276	3288	3310	rVV	753799	1176502	77.40%	9.696%
84	11.886	3371	3373	3375	rVB	177	66	0.00%	0.001%
85	12.278	3493	3495	3501	rBV3	457	306	0.02%	0.003%
86	12.625	3600	3603	3605	rBV3	334	220	0.01%	0.002%
87	12.673	3616	3618	3620	rVB3	415	183	0.01%	0.002%

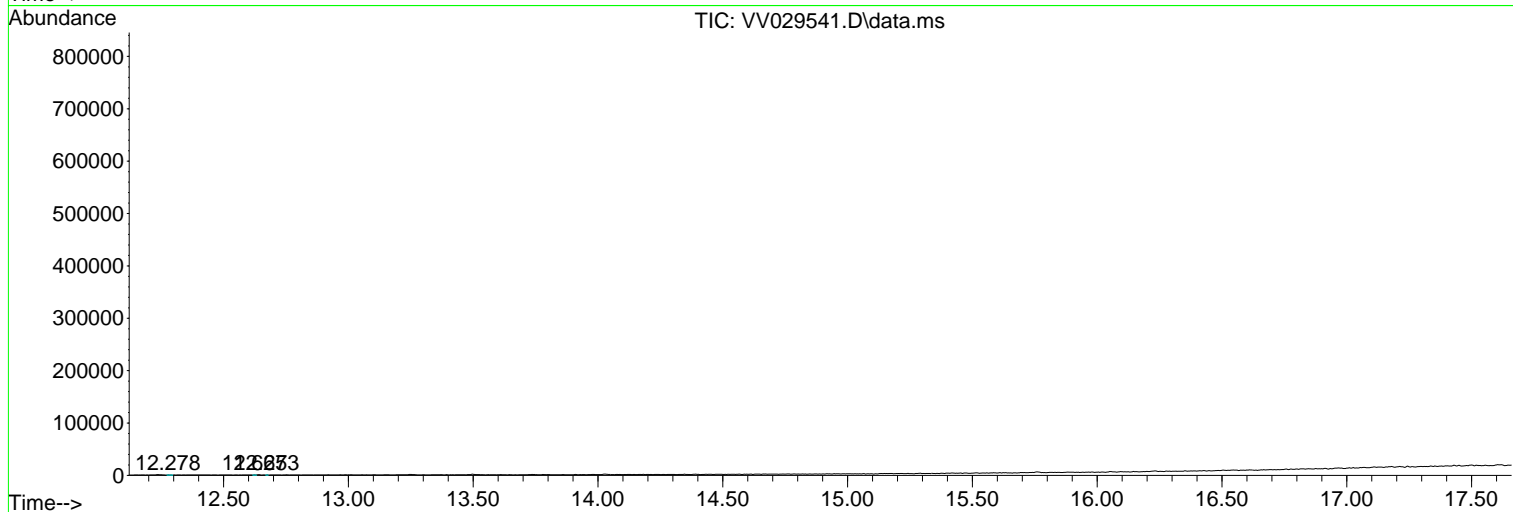
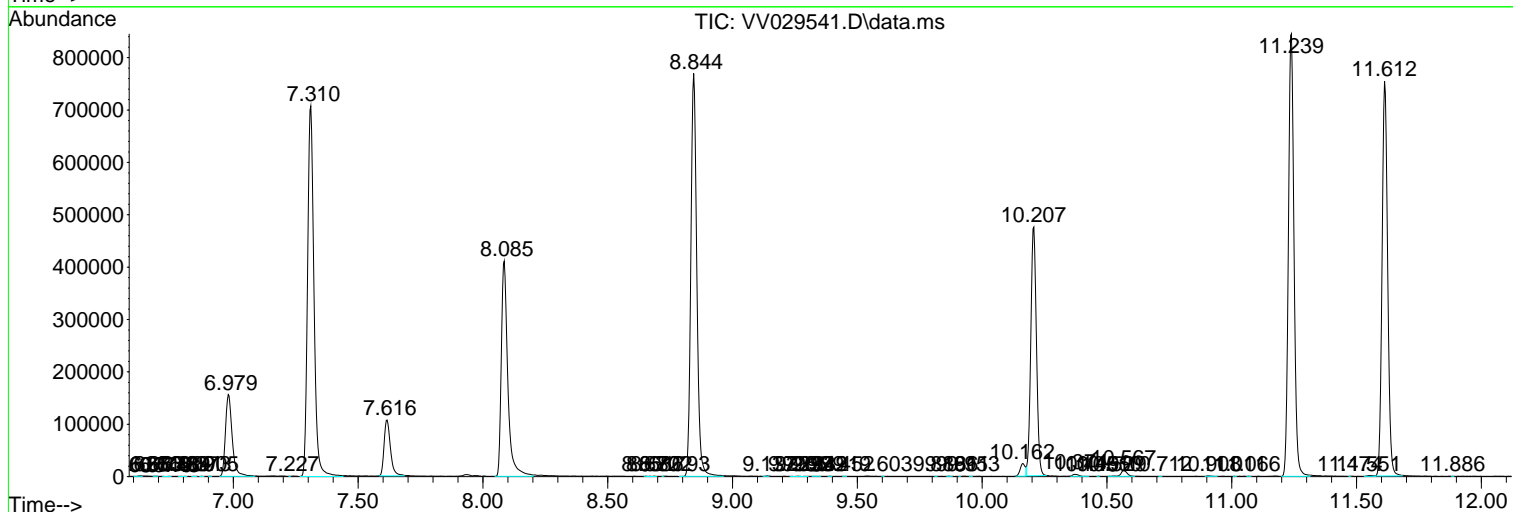
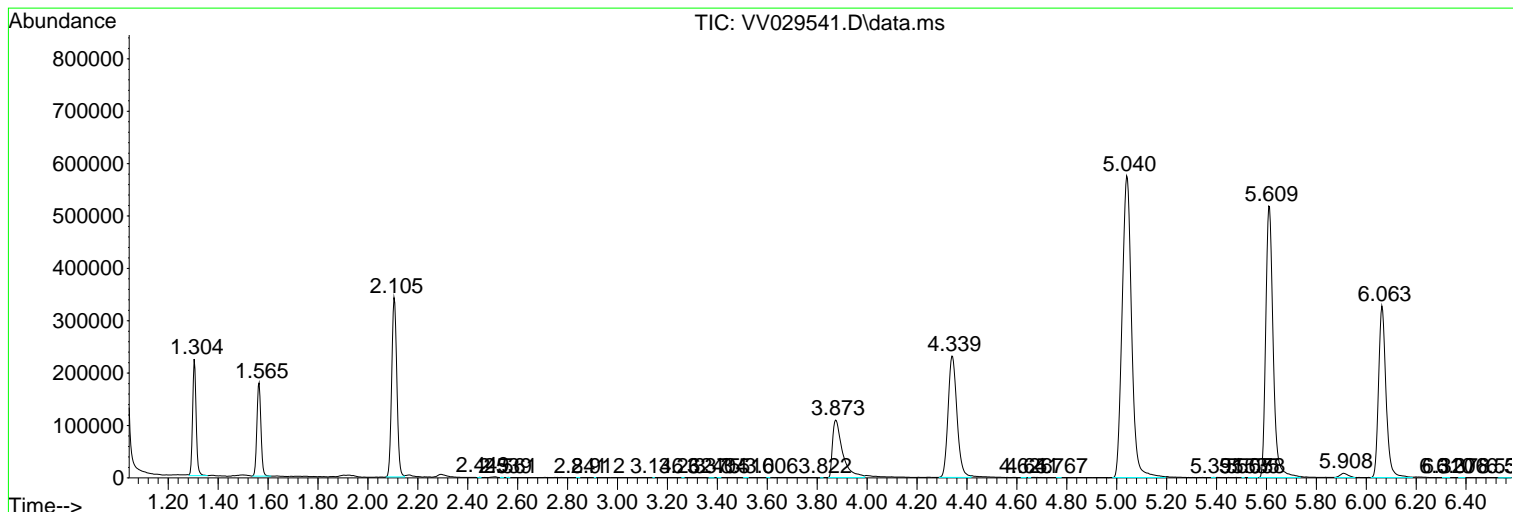
Sum of corrected areas: 12133747

Data Path : Z:\voasrv\HPCHEM1\MSVOA_V\Data\VV120922\
 Data File : VV029541.D
 Acq On : 09 Dec 2022 23:11
 Operator : SY/MD
 Sample : N5959-16
 Misc : 5.0mL/MSVOA_V/WATER
 ALS Vial : 34 Sample Multiplier: 1

Instrument :
 MSVOA_V
 ClientSampleId :
 COEM2

Quant Method : Z:\voasrv\HPCHEM1\MSVOA_V\Method\SFAMVLM120722WMA.M
 Quant Title : VOC Analysis

TIC Library : C:\Database\NIST20.L
 TIC Integration Parameters: LSCINT.P



Library Search Compound Report

Data Path : Z:\voasrv\HPCHEM1\MSVOA_V\Data\VV120922\
Data File : VV029541.D
Acq On : 09 Dec 2022 23:11
Operator : SY/MD
Sample : N5959-16
Misc : 5.0mL/MSVOA_V/WATER
ALS Vial : 34 Sample Multiplier: 1

Instrument :
MSVOA_V
ClientSampleId :
C0EM2

Quant Method : Z:\voasrv\HPCHEM1\MSVOA_V\Method\SFAMVLM120722WMA.M
Quant Title : VOC Analysis

TIC Library : C:\Database\NIST20.L
TIC Integration Parameters: LSCINT.P

No Library Search Compounds Detected

Data Path : Z:\voasrv\HPCHEM1\MSVOA_V\Data\VV120922\
Data File : VV029541.D
Acq On : 09 Dec 2022 23:11
Operator : SY/MD
Sample : N5959-16
Misc : 5.0mL/MSVOA_V/WATER
ALS Vial : 34 Sample Multiplier: 1

Instrument :
MSVOA_V
ClientSampleId :
C0EM2

Quant Method : Z:\voasrv\HPCHEM1\MSVOA_V\Method\SFAMVLM120722WMA.M
Quant Title : VOC Analysis

TIC Library : C:\Database\NIST0.L
TIC Integration Parameters: LSCINT.P

TIC Top Hit name	RT	EstConc	Units	Response	--Internal Standard--		
					#	RT	Resp Conc
