

Data Path : Z:\voasrv\HPCHEM1\MSVOA_V\Data\VW120922\
 Data File : VW029574.D
 Acq On : 10 Dec 2022 12:30
 Operator : SY/MD
 Sample : N5928-06 50X
 Misc : 5.0mL/MSVOA_V/WATER
 ALS Vial : 68 Sample Multiplier: 1

Instrument :
 MSVOA_V
 ClientSampleId :
 EXZ69

Integration Parameters: LSCINT.P

Integrator: RTE
 Smoothing : OFF Filtering: 5
 Sampling : 1 Min Area: 0 % of largest Peak
 Start Thrs: 0.2 Max Peaks: 100
 Stop Thrs : 0 Peak Location: TOP

If leading or trailing edge < 100 prefer < Baseline drop else tangent >
 Peak separation: 5

Method : Z:\voasrv\HPCHEM1\MSVOA_V\Method\SFAMVLM120722WMA.M
 Title : VOC Analysis

Signal : TIC: VW029574.D\data.ms

peak #	R.T. min	first scan	max scan	last scan	PK TY	peak height	corr. area	corr. % max.	% of total
1	1.304	76	82	98	rVB	198989	201583	13.57%	1.610%
2	1.561	155	162	179	rVB	174931	198650	13.37%	1.586%
3	2.105	321	331	349	rBV	333489	477419	32.14%	3.813%
4	2.416	426	428	433	rBV3	321	264	0.02%	0.002%
5	2.510	447	457	463	rBV4	2943	4677	0.31%	0.037%
6	2.609	482	488	489	rBV	825	730	0.05%	0.006%
7	2.670	504	507	512	rVB2	297	216	0.01%	0.002%
8	2.709	513	519	520	rBV2	363	332	0.02%	0.003%
9	2.760	532	535	537	rBV2	260	163	0.01%	0.001%
10	2.822	551	554	556	rBV	197	109	0.01%	0.001%
11	3.018	611	615	617	rVV2	302	238	0.02%	0.002%
12	3.069	627	631	637	rVB3	343	343	0.02%	0.003%
13	3.188	659	668	673	rBV5	1485	2575	0.17%	0.021%
14	3.243	682	685	686	rBV2	261	144	0.01%	0.001%
15	3.330	706	712	714	rBV2	146	133	0.01%	0.001%
16	3.346	714	717	720	rVV3	280	214	0.01%	0.002%
17	3.365	720	723	727	rVV2	213	188	0.01%	0.002%
18	3.510	762	768	771	rVV2	233	186	0.01%	0.001%
19	3.873	870	881	921	rBV2	120266	368016	24.78%	2.939%
20	4.339	1010	1026	1051	rBV	229584	572347	38.53%	4.571%
21	4.603	1094	1108	1124	rVB3	6692	15983	1.08%	0.128%
22	4.783	1161	1164	1168	rVB2	181	136	0.01%	0.001%
23	4.812	1168	1173	1178	rBV2	250	300	0.02%	0.002%
24	4.883	1193	1195	1200	rVB2	198	125	0.01%	0.001%
25	4.973	1217	1223	1226	rBV2	212	248	0.02%	0.002%
26	5.040	1226	1244	1270	rBV2	574072	1485386	100.00%	11.862%
27	5.439	1365	1368	1371	rVB2	497	308	0.02%	0.002%
28	5.465	1372	1376	1378	rBV	361	249	0.02%	0.002%
29	5.481	1379	1381	1384	rVB2	299	184	0.01%	0.001%
30	5.545	1394	1401	1404	rVB2	255	264	0.02%	0.002%
31	5.564	1404	1407	1408	rBV2	301	156	0.01%	0.001%
32	5.609	1408	1421	1469	rBV	584347	1196674	80.56%	9.556%
33	5.850	1494	1496	1502	rBV3	301	291	0.02%	0.002%
34	5.902	1503	1512	1514	rBV4	4205	5546	0.37%	0.044%
35	5.979	1534	1536	1540	rVB2	265	146	0.01%	0.001%
36	6.063	1548	1562	1589	rBV	322182	665182	44.78%	5.312%

Data Path : Z:\voasrv\HPCHEM1\MSVOA_V\Data\VW120922\
 Data File : VW029574.D
 Acq On : 10 Dec 2022 12:30
 Operator : SY/MD
 Sample : N5928-06 50X
 Misc : 5.0mL/MSVOA_V/WATER
 ALS Vial : 68 Sample Multiplier: 1

Instrument :
 MSVOA_V
 ClientSampleId :
 EXZ69

Integration Parameters: LSCINT.P

Integrator: RTE
 Smoothing : OFF
 Sampling : 1
 Start Thrs: 0.2
 Stop Thrs : 0

Filtering: 5
 Min Area: 0 % of largest Peak
 Max Peaks: 100
 Peak Location: TOP

If leading or trailing edge < 100 prefer < Baseline drop else tangent >
 Peak separation: 5

Method : Z:\voasrv\HPCHEM1\MSVOA_V\Method\SFAMVLM120722WMA.M
 Title : VOC Analysis

37	6.452	1680	1683	1687	rVB2	181	115	0.01%	0.001%
38	6.500	1692	1698	1699	rBV2	154	128	0.01%	0.001%
39	6.529	1704	1707	1709	rVV2	256	165	0.01%	0.001%
40	6.548	1710	1713	1717	rVB3	334	222	0.01%	0.002%
41	6.593	1724	1727	1729	rBV2	257	159	0.01%	0.001%
42	6.625	1731	1737	1738	rBV2	1012	780	0.05%	0.006%
43	6.757	1772	1778	1782	rBV3	209	165	0.01%	0.001%
44	6.818	1794	1797	1798	rBV	247	140	0.01%	0.001%
45	6.876	1813	1815	1818	rVB2	297	136	0.01%	0.001%
46	6.979	1836	1847	1873	rBV	148212	274194	18.46%	2.190%
47	7.310	1934	1950	1980	rBV	693519	1231365	82.90%	9.833%
48	7.616	2035	2045	2074	rVB	104891	184410	12.41%	1.473%
49	7.969	2150	2155	2164	rVB5	1753	1893	0.13%	0.015%
50	8.085	2180	2191	2230	rBV	405149	740974	49.88%	5.917%
51	8.445	2296	2303	2308	rVB5	478	678	0.05%	0.005%
52	8.471	2308	2311	2314	rBV2	270	221	0.01%	0.002%
53	8.567	2339	2341	2344	rBV2	183	140	0.01%	0.001%
54	8.587	2344	2347	2351	rVB3	412	311	0.02%	0.002%
55	8.619	2355	2357	2359	rBV	262	147	0.01%	0.001%
56	8.645	2362	2365	2367	rBV2	369	213	0.01%	0.002%
57	8.706	2380	2384	2391	rVB2	513	559	0.04%	0.004%
58	8.757	2397	2400	2406	rVB3	390	347	0.02%	0.003%
59	8.786	2406	2409	2411	rBV2	259	134	0.01%	0.001%
60	8.844	2415	2427	2460	rBV	865615	1413427	95.16%	11.287%
61	9.069	2495	2497	2500	rVB2	403	206	0.01%	0.002%
62	9.130	2514	2516	2522	rVB5	501	400	0.03%	0.003%
63	9.162	2525	2526	2530	rVB	378	174	0.01%	0.001%
64	9.223	2543	2545	2549	rBV2	242	110	0.01%	0.001%
65	9.243	2549	2551	2553	rVV	341	167	0.01%	0.001%
66	9.278	2560	2562	2567	rBV2	181	130	0.01%	0.001%
67	9.333	2577	2579	2583	rVB2	382	237	0.02%	0.002%
68	9.355	2583	2586	2587	rBV	224	134	0.01%	0.001%
69	9.400	2597	2600	2604	rBV2	158	149	0.01%	0.001%
70	9.538	2639	2643	2645	rBV2	624	474	0.03%	0.004%
71	9.622	2665	2669	2672	rBV	162	118	0.01%	0.001%
72	9.651	2674	2678	2681	rBV2	287	242	0.02%	0.002%
73	9.802	2722	2725	2727	rBV2	223	152	0.01%	0.001%
74	9.927	2760	2764	2766	rVB2	195	148	0.01%	0.001%
75	10.030	2793	2796	2798	rBV2	242	155	0.01%	0.001%
76	10.050	2800	2802	2806	rVB2	200	120	0.01%	0.001%

Data Path : Z:\voasrv\HPCHEM1\MSVOA_V\Data\VW120922\
 Data File : WV029574.D
 Acq On : 10 Dec 2022 12:30
 Operator : SY/MD
 Sample : N5928-06 50X
 Misc : 5.0mL/MSVOA_V/WATER
 ALS Vial : 68 Sample Multiplier: 1

Instrument :
 MSVOA_V
 ClientSampleId :
 EXZ69

Integration Parameters: LSCINT.P
 Integrator: RTE
 Smoothing : OFF
 Sampling : 1
 Start Thrs : 0.2
 Stop Thrs : 0
 Filtering: 5
 Min Area: 0 % of largest Peak
 Max Peaks: 100
 Peak Location: TOP

If leading or trailing edge < 100 prefer < Baseline drop else tangent >
 Peak separation: 5

Method : Z:\voasrv\HPCHEM1\MSVOA_V\Method\SFAMVLM120722WMA.M
 Title : VOC Analysis

77	10.088	2812	2814	2821	rBV3	316	262	0.02%	0.002%
78	10.162	2828	2837	2841	rBV	21124	30635	2.06%	0.245%
79	10.207	2842	2851	2875	rVB	482680	757970	51.03%	6.053%
80	10.310	2881	2883	2891	rVB2	477	341	0.02%	0.003%
81	10.365	2898	2900	2908	rVB2	504	458	0.03%	0.004%
82	10.442	2920	2924	2928	rBV3	573	547	0.04%	0.004%
83	10.567	2955	2963	2974	rBV2	9437	14612	0.98%	0.117%
84	10.657	2985	2991	2993	rBV	215	211	0.01%	0.002%
85	10.718	3006	3010	3012	rBV2	373	257	0.02%	0.002%
86	10.767	3022	3025	3028	rBV	187	129	0.01%	0.001%
87	10.847	3043	3050	3056	rBV4	403	477	0.03%	0.004%
88	10.908	3063	3069	3077	rBV4	1057	1547	0.10%	0.012%
89	11.014	3097	3102	3105	rBV2	184	214	0.01%	0.002%
90	11.156	3143	3146	3148	rVV2	342	186	0.01%	0.001%
91	11.239	3159	3172	3195	rBV	942462	1470542	99.00%	11.743%
92	11.500	3251	3253	3255	rBV2	291	170	0.01%	0.001%
93	11.522	3258	3260	3263	rVB3	566	292	0.02%	0.002%
94	11.541	3263	3266	3267	rBV	251	132	0.01%	0.001%
95	11.612	3275	3288	3314	rBV	754064	1178321	79.33%	9.410%
96	11.918	3374	3383	3392	rBV5	3655	5829	0.39%	0.047%
97	12.037	3418	3420	3423	rBV2	255	138	0.01%	0.001%
98	12.313	3504	3506	3509	rBV2	279	151	0.01%	0.001%
99	12.631	3603	3605	3608	rBV2	346	211	0.01%	0.002%
100	13.493	3868	3873	3884	rVB2	3017	4875	0.33%	0.039%

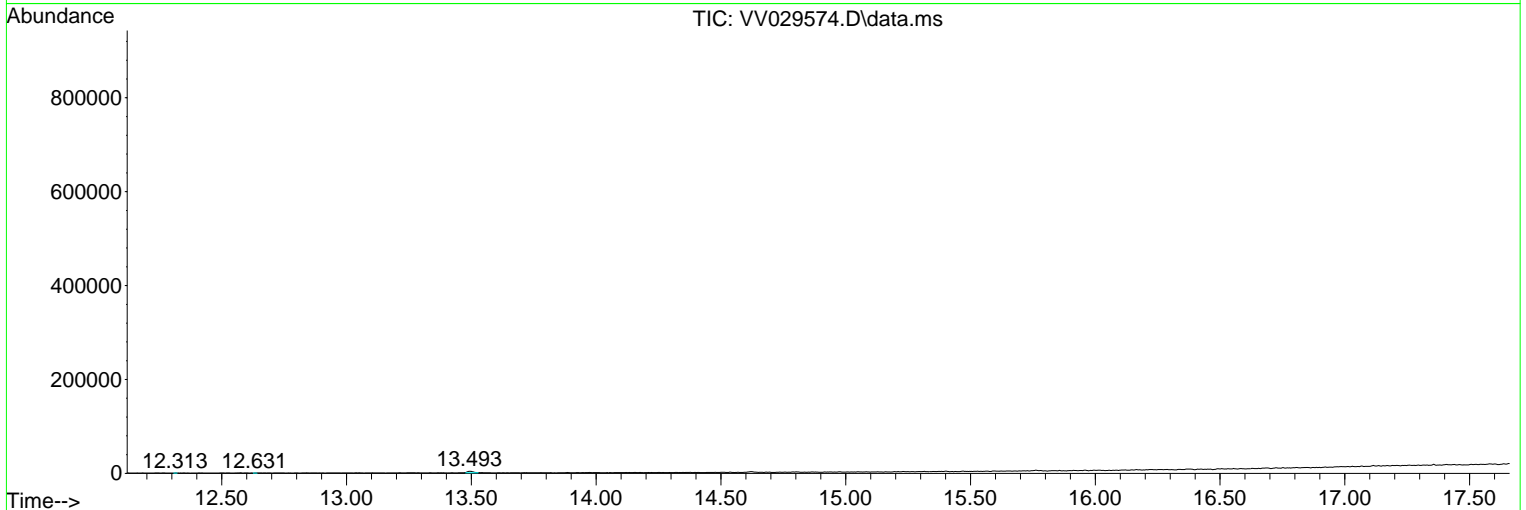
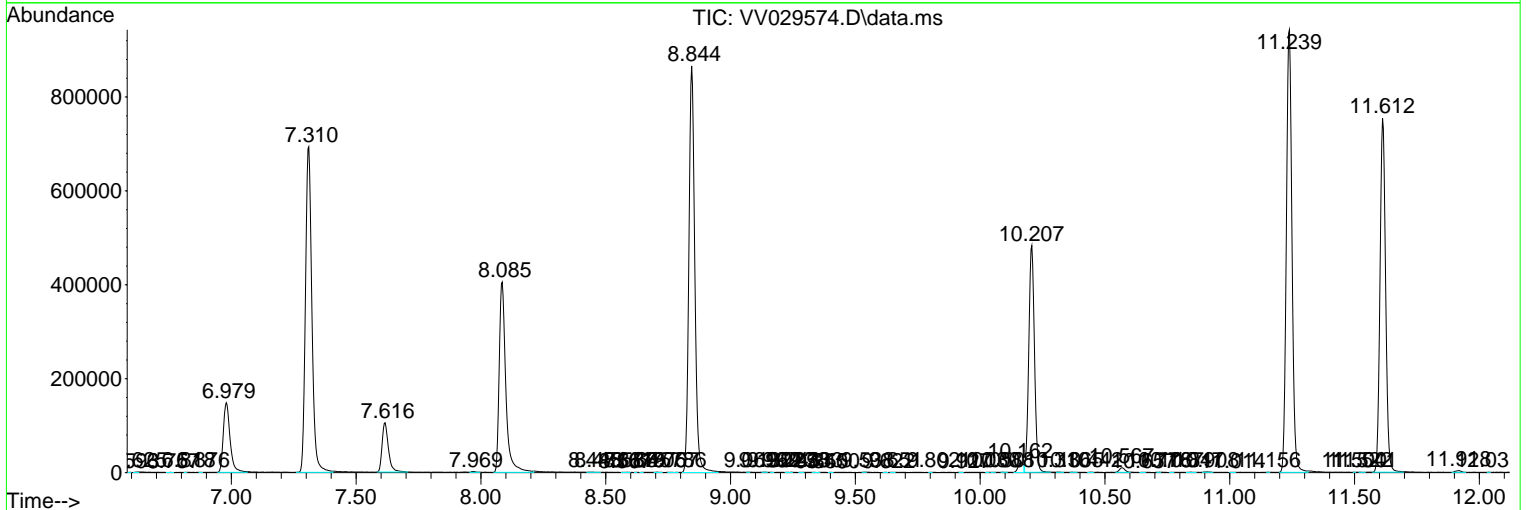
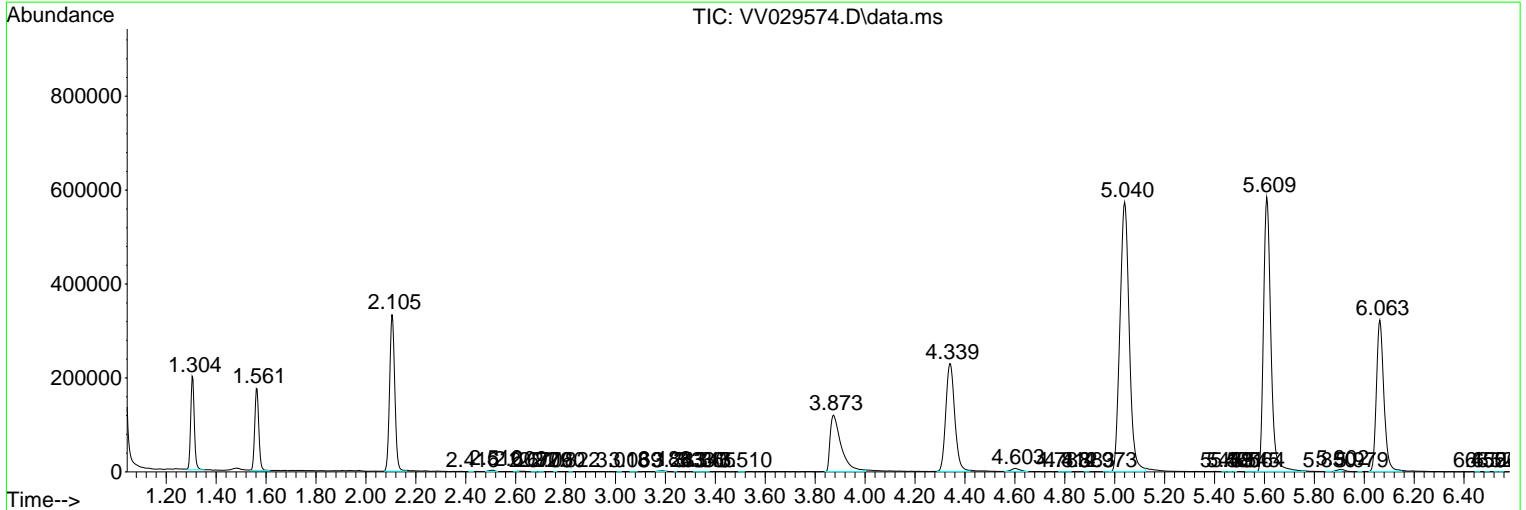
Sum of corrected areas: 12522351

Data Path : Z:\voasrv\HPCHEM1\MSVOA_V\Data\VV120922\
 Data File : VV029574.D
 Acq On : 10 Dec 2022 12:30
 Operator : SY/MD
 Sample : N5928-06 50X
 Misc : 5.0mL/MSVOA_V/WATER
 ALS Vial : 68 Sample Multiplier: 1

Instrument :
 MSVOA_V
 ClientSampleId :
 EXZ69

Quant Method : Z:\voasrv\HPCHEM1\MSVOA_V\Method\SFAMVLM120722WMA.M
 Quant Title : VOC Analysis

TIC Library : C:\Database\NIST20.L
 TIC Integration Parameters: LSCINT.P



Library Search Compound Report

Data Path : Z:\voasrv\HPCHEM1\MSVOA_V\Data\VV120922\
Data File : VV029574.D
Acq On : 10 Dec 2022 12:30
Operator : SY/MD
Sample : N5928-06 50X
Misc : 5.0mL/MSVOA_V/WATER
ALS Vial : 68 Sample Multiplier: 1

Instrument :
MSVOA_V
ClientSampleId :
EXZ69

Quant Method : Z:\voasrv\HPCHEM1\MSVOA_V\Method\SFAMVLM120722WMA.M
Quant Title : VOC Analysis

TIC Library : C:\Database\NIST20.L
TIC Integration Parameters: LSCINT.P

No Library Search Compounds Detected

Data Path : Z:\voasrv\HPCHEM1\MSVOA_V\Data\VV120922\
Data File : VV029574.D
Acq On : 10 Dec 2022 12:30
Operator : SY/MD
Sample : N5928-06 50X
Misc : 5.0mL/MSVOA_V/WATER
ALS Vial : 68 Sample Multiplier: 1

Instrument :
MSVOA_V
ClientSampleId :
EXZ69

Quant Method : Z:\voasrv\HPCHEM1\MSVOA_V\Method\SFAMVLM120722WMA.M
Quant Title : VOC Analysis

TIC Library : C:\Database\NIST0.L
TIC Integration Parameters: LSCINT.P

TIC Top Hit name	RT	EstConc	Units	Response	--Internal Standard--		
					#	RT	Resp Conc
