

Data Path : Z:\VOASRV\HPCHEM1\MSVOA V\DATA\VV121020\  
 Data File : VV019518.D  
 Acq On : 10 Dec 2020 18:40  
 Operator : SY/MD  
 Sample : L4997-04  
 Misc : 5.0mL/MSVOA V/WATER  
 ALS Vial : 12 Sample Multiplier: 1

Instrument :  
 MSVOA\_V  
 ClientSampleId :  
 C0AN9

Integration Parameters: LSCINT.P

Integrator: RTE  
 Smoothing : OFF  
 Sampling : 1  
 Start Thrs: 0.2  
 Stop Thrs : 0

Filtering: 5  
 Min Area: 0 % of largest Peak  
 Max Peaks: 100  
 Peak Location: TOP

If leading or trailing edge < 100 prefer < Baseline drop else tangent >  
 Peak separation: 5

Method : Z:\VOASRV\HPCHEM1\MSVOA\_V\METHOD\SOMVLM121020WMA.M  
 Title : VOC Analysis

Signal : TIC

peak #	R.T. min	first scan	max scan	last scan	PK TY	peak height	corr. area	corr. % max.	% of total
1	1.309	62	68	83	rVB	333755	324775	13.75%	1.817%
2	1.569	143	149	160	rVB	251181	284737	12.05%	1.593%
3	2.113	308	318	347	rVB	562229	897712	38.00%	5.021%
4	2.737	508	512	516	rBV7	1565	1393	0.06%	0.008%
5	3.000	588	594	597	rBV5	1390	1457	0.06%	0.008%
6	3.061	611	613	617	rVB5	1147	614	0.03%	0.003%
7	3.132	633	635	638	rBV3	1208	857	0.04%	0.005%
8	3.180	647	650	653	rVB5	1120	759	0.03%	0.004%
9	3.431	723	728	729	rBV2	1176	725	0.03%	0.004%
10	3.515	752	754	758	rBV5	1112	838	0.04%	0.005%
11	3.598	778	780	785	rVB5	991	707	0.03%	0.004%
12	3.701	807	812	816	rBV7	1152	1215	0.05%	0.007%
13	3.740	820	824	828	rVB3	1127	1030	0.04%	0.006%
14	3.894	860	872	910	rBV	132070	436508	18.48%	2.442%
15	4.200	963	967	968	rBV3	767	614	0.03%	0.003%
16	4.354	998	1015	1044	rBV	373143	927776	39.27%	5.190%
17	4.614	1084	1096	1109	rBV3	6317	14722	0.62%	0.082%
18	4.679	1112	1116	1118	rVB3	1033	629	0.03%	0.004%
19	4.798	1146	1153	1156	rBV5	840	917	0.04%	0.005%
20	4.846	1164	1168	1169	rBV3	1022	786	0.03%	0.004%
21	4.949	1196	1200	1201	rBV4	871	620	0.03%	0.003%
22	4.971	1205	1207	1213	rVB5	643	682	0.03%	0.004%
23	5.052	1213	1232	1267	rBV2	923254	2362490	100.00%	13.215%
24	5.492	1365	1369	1370	rBV4	1111	724	0.03%	0.004%
25	5.572	1389	1394	1396	rBV4	1200	893	0.04%	0.005%
26	5.621	1396	1409	1435	rBV	706588	1414760	59.88%	7.914%
27	5.923	1490	1503	1518	rBV6	24764	56164	2.38%	0.314%
28	5.981	1519	1521	1529	rVB6	1446	1551	0.07%	0.009%
29	6.074	1532	1550	1571	rBV	522141	1071029	45.33%	5.991%
30	6.379	1641	1645	1650	rBV6	1857	2355	0.10%	0.013%
31	6.511	1683	1686	1689	rVB4	1084	715	0.03%	0.004%
32	6.540	1691	1695	1699	rBV6	798	707	0.03%	0.004%
33	6.595	1710	1712	1716	rBV5	699	619	0.03%	0.003%
34	6.624	1716	1721	1724	rBV5	961	909	0.04%	0.005%

Data Path : Z:\VOASRV\HPCHEM1\MSVOA V\DATA\VV121020\  
 Data File : VV019518.D  
 Acq On : 10 Dec 2020 18:40  
 Operator : SY/MD  
 Sample : L4997-04  
 Misc : 5.0mL/MSVOA V/WATER  
 ALS Vial : 12 Sample Multiplier: 1

Instrument :  
 MSVOA\_V  
 ClientSampleId :  
 C0AN9

## Integration Parameters: LSCINT.P

Integrator: RTE  
 Smoothing : OFF  
 Sampling : 1  
 Start Thrs: 0.2  
 Stop Thrs : 0

Filtering: 5  
 Min Area: 0 % of largest Peak  
 Max Peaks: 100  
 Peak Location: TOP

If leading or trailing edge < 100 prefer < Baseline drop else tangent >  
 Peak separation: 5

Method : Z:\VOASRV\HPCHEM1\MSVOA\_V\METHOD\SOMVLM121020WMA.M  
 Title : VOC Analysis

35	6.775	1766	1768	1771	rVB3	1468	820	0.03%	0.005%
36	6.791	1771	1773	1777	rVB3	1244	940	0.04%	0.005%
37	6.823	1777	1783	1784	rBV3	1495	1503	0.06%	0.008%
38	6.875	1794	1799	1802	rVB5	1580	1243	0.05%	0.007%
39	6.894	1802	1805	1808	rBV4	1025	956	0.04%	0.005%
40	6.945	1817	1821	1824	rBV4	1230	1249	0.05%	0.007%
41	6.990	1824	1835	1867	rVV	339433	617334	26.13%	3.453%
42	7.148	1881	1884	1887	rBV4	1233	1157	0.05%	0.006%
43	7.212	1902	1904	1910	rVB7	1302	894	0.04%	0.005%
44	7.322	1925	1938	1959	rBV	1095871	1892404	80.10%	10.585%
45	7.624	2021	2032	2057	rBV	241473	424830	17.98%	2.376%
46	7.839	2097	2099	2102	rBV3	918	712	0.03%	0.004%
47	7.891	2112	2115	2119	rVB5	1082	823	0.03%	0.005%
48	7.942	2120	2131	2141	rBV4	6210	12916	0.55%	0.072%
49	8.055	2161	2166	2167	rBV4	1146	824	0.03%	0.005%
50	8.090	2167	2177	2206	rVV	527184	905924	38.35%	5.067%
51	8.412	2274	2277	2280	rBV6	1442	1089	0.05%	0.006%
52	8.437	2280	2285	2287	rVV4	1150	1339	0.06%	0.007%
53	8.611	2336	2339	2343	rBV6	836	725	0.03%	0.004%
54	8.678	2356	2360	2362	rVV4	1084	817	0.03%	0.005%
55	8.749	2377	2382	2386	rVB8	711	664	0.03%	0.004%
56	8.855	2402	2415	2437	rBV	1045267	1701138	72.01%	9.515%
57	9.109	2491	2494	2497	rVB4	1043	724	0.03%	0.004%
58	9.260	2536	2541	2547	rBV8	1051	1727	0.07%	0.010%
59	9.444	2595	2598	2605	rVB6	1037	1180	0.05%	0.007%
60	9.534	2623	2626	2627	rVV2	1201	624	0.03%	0.003%
61	9.553	2629	2632	2635	rVV4	1463	1372	0.06%	0.008%
62	9.572	2635	2638	2645	rVB10	1988	2261	0.10%	0.013%
63	9.666	2663	2667	2671	rVB4	1069	889	0.04%	0.005%
64	9.733	2686	2688	2691	rVV2	1232	676	0.03%	0.004%
65	9.781	2701	2703	2706	rBV3	1146	782	0.03%	0.004%
66	9.932	2747	2750	2757	rVB8	1162	930	0.04%	0.005%
67	10.032	2777	2781	2786	rVB7	1338	1352	0.06%	0.008%
68	10.077	2792	2795	2798	rBV2	1276	895	0.04%	0.005%
69	10.222	2826	2840	2859	rBV	673792	1061817	44.94%	5.939%
70	10.321	2868	2871	2873	rBV3	1164	668	0.03%	0.004%
71	10.389	2884	2892	2901	rBV4	6229	10241	0.43%	0.057%

Data Path : Z:\VOASRV\HPCHEM1\MSVOA V\DATA\VV121020\  
 Data File : VV019518.D  
 Acq On : 10 Dec 2020 18:40  
 Operator : SY/MD  
 Sample : L4997-04  
 Misc : 5.0mL/MSVOA V/WATER  
 ALS Vial : 12 Sample Multiplier: 1

Instrument :  
 MSVOA\_V  
 ClientSampleId :  
 C0AN9

## Integration Parameters: LSCINT.P

Integrator: RTE  
 Smoothing : OFF  
 Sampling : 1  
 Start Thrs: 0.2  
 Stop Thrs : 0

Filtering: 5  
 Min Area: 0 % of largest Peak  
 Max Peaks: 100  
 Peak Location: TOP

If leading or trailing edge < 100 prefer < Baseline drop else tangent >  
 Peak separation: 5

Method : Z:\VOASRV\HPCHEM1\MSVOA\_V\METHOD\SOMVLM121020WMA.M  
 Title : VOC Analysis

72	10.553	2939	2943	2948	rVB6	2022	1936	0.08%	0.011%
73	10.579	2948	2951	2953	rBV3	1104	747	0.03%	0.004%
74	10.646	2966	2972	2974	rBV6	986	950	0.04%	0.005%
75	10.762	3004	3008	3015	rBV9	961	1079	0.05%	0.006%
76	10.855	3033	3037	3039	rVV3	1295	1097	0.05%	0.006%
77	10.955	3063	3068	3072	rVB7	1255	1282	0.05%	0.007%
78	11.026	3086	3090	3095	rVB4	1327	1484	0.06%	0.008%
79	11.087	3105	3109	3111	rBV3	900	851	0.04%	0.005%
80	11.186	3131	3140	3148	rBV3	2521	4748	0.20%	0.027%
81	11.254	3148	3161	3190	rVV	1101214	1671011	70.73%	9.347%
82	11.527	3242	3246	3248	rBV4	1927	1526	0.06%	0.009%
83	11.627	3264	3277	3300	rBV	1066485	1695995	71.79%	9.487%
84	11.794	3323	3329	3332	rVV8	1908	2192	0.09%	0.012%
85	11.810	3332	3334	3338	rVB4	1120	712	0.03%	0.004%
86	11.907	3362	3364	3369	rVB6	1048	698	0.03%	0.004%
87	11.977	3383	3386	3392	rVB6	1105	945	0.04%	0.005%
88	12.212	3455	3459	3462	rVV5	1202	794	0.03%	0.004%
89	12.254	3468	3472	3474	rBV3	1217	857	0.04%	0.005%
90	12.360	3502	3505	3509	rBV4	940	675	0.03%	0.004%
91	12.447	3525	3532	3535	rBV7	1090	1151	0.05%	0.006%
92	12.518	3552	3554	3560	rVB6	860	760	0.03%	0.004%
93	12.653	3589	3596	3605	rVB9	3639	6451	0.27%	0.036%
94	13.058	3718	3722	3726	rVB6	972	734	0.03%	0.004%
95	13.167	3754	3756	3761	rVB2	1232	826	0.03%	0.005%
96	13.276	3779	3790	3794	rBV2	3194	5338	0.23%	0.030%
97	13.813	3954	3957	3960	rBV5	1090	772	0.03%	0.004%
98	14.064	4030	4035	4037	rBV4	827	868	0.04%	0.005%
99	14.093	4041	4044	4046	rBV4	1240	729	0.03%	0.004%
100	14.672	4220	4224	4226	rBV3	1528	1134	0.05%	0.006%

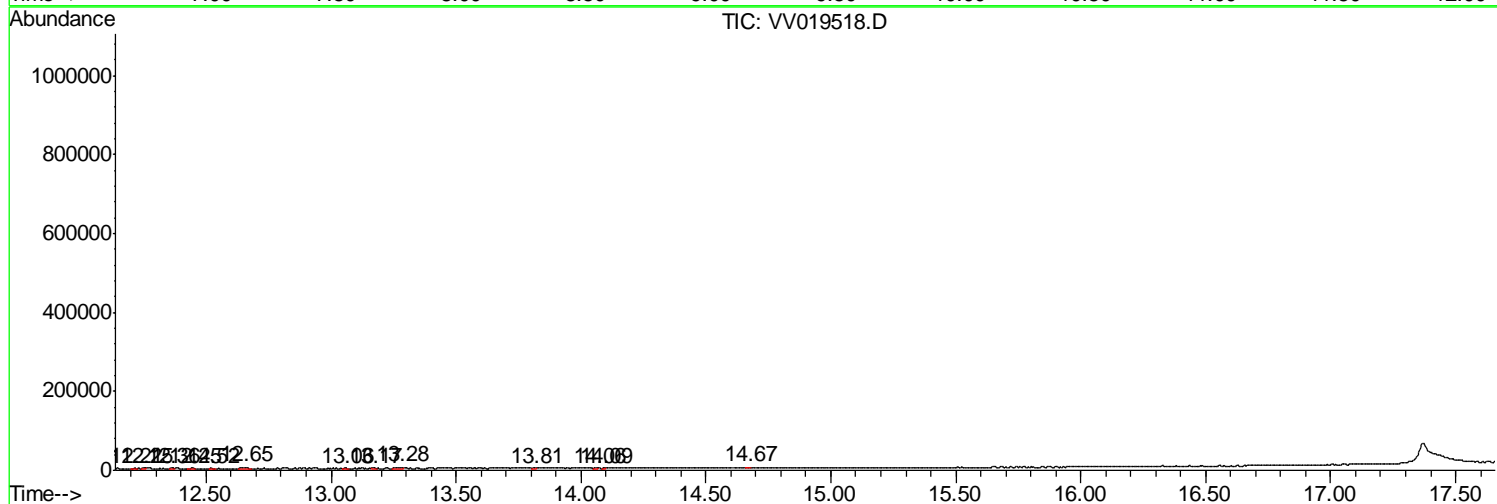
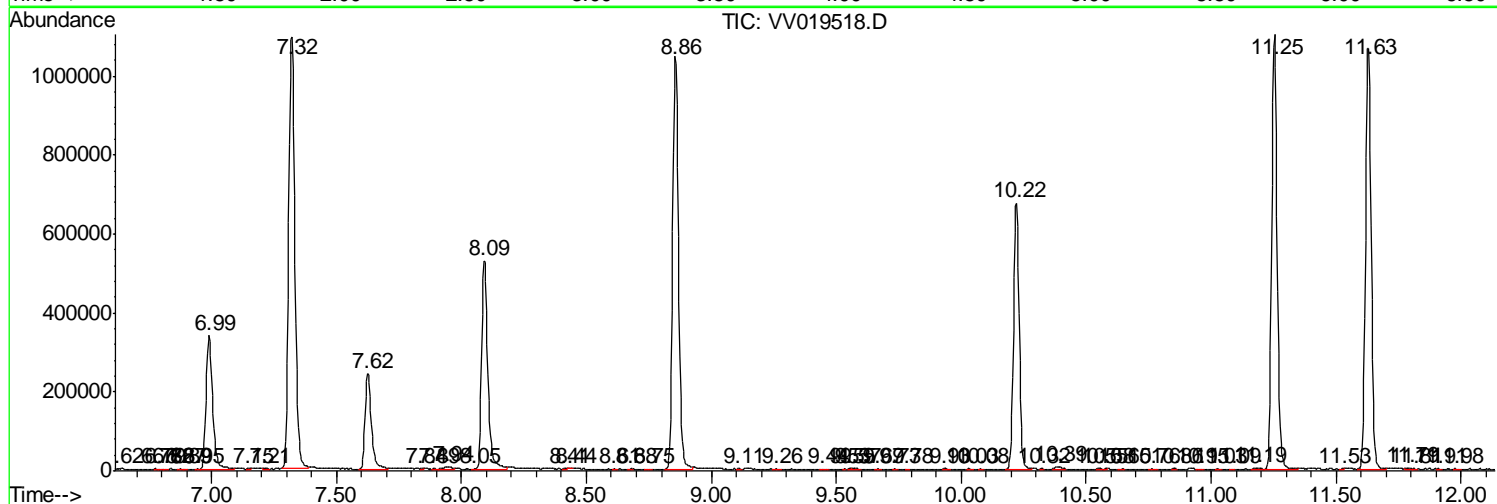
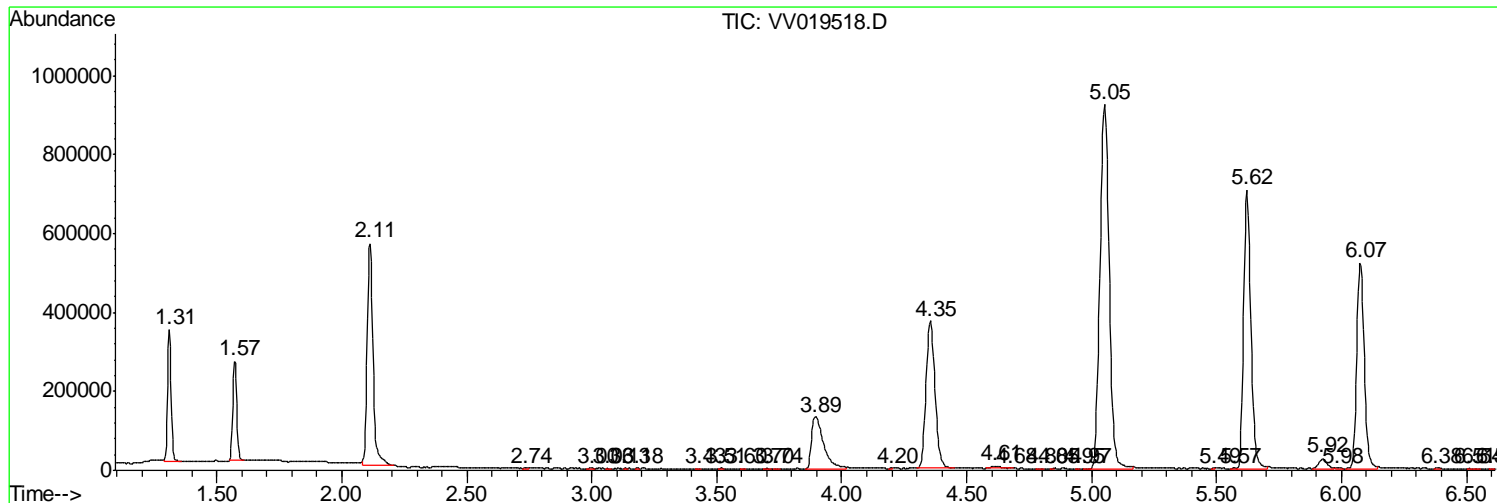
Sum of corrected areas: 17877770

Data Path : Z:\VOASRV\HPCHEM1\MSVOA V\DATA\VV121020\  
 Data File : VV019518.D  
 Acq On : 10 Dec 2020 18:40  
 Operator : SY/MD  
 Sample : L4997-04  
 Misc : 5.0mL/MSVOA V/WATER  
 ALS Vial : 12 Sample Multiplier: 1

**Instrument :**  
 MSVOA\_V  
**ClientSampled :**  
 COAN9

Quant Method : Z:\VOASRV\HPCHEM1\MSVOA\_V\METHOD\SOMVLM121020WMA.M  
 Quant Title : VOC Analysis

TIC Library : C:\DATABASE\NIST11.L  
 TIC Integration Parameters: LSCINT.P



Data Path : Z:\VOASRV\HPCHEM1\MSVOA\_V\DATA\VV121020\  
Data File : VV019518.D  
Acq On : 10 Dec 2020 18:40  
Operator : SY/MD  
Sample : L4997-04  
Misc : 5.0mL/MSVOA\_V/WATER  
ALS Vial : 12 Sample Multiplier: 1

Instrument :  
MSVOA\_V  
ClientSampleId :  
C0AN9

Quant Method : Z:\VOASRV\HPCHEM1\MSVOA\_V\METHOD\SOMVLM121020WMA.M  
Quant Title : VOC Analysis

TIC Library : C:\DATABASE\NIST11.L  
TIC Integration Parameters: LSCINT.P

No Library Search Compounds Detected

\*\*\*\*\*

Data Path : Z:\VOASRV\HPCHEM1\MSVOA\_V\DATA\VV121020\  
Data File : VV019518.D  
Acq On : 10 Dec 2020 18:40  
Operator : SY/MD  
Sample : L4997-04  
Misc : 5.0mL/MSVOA\_V/WATER  
ALS Vial : 12 Sample Multiplier: 1

Instrument :  
MSVOA\_V  
ClientSampleId :  
C0AN9

Quant Method : Z:\VOASRV\HPCHEM1\MSVOA\_V\METHOD\SOMVLM121020WMA.M  
Quant Title : VOC Analysis

TIC Library : C:\DATABASE\NIST11.L  
TIC Integration Parameters: LSCINT.P

TIC Top Hit name	RT	EstConc	Units	Response	--Internal Standard--			
					#	RT	Resp	Conc

---