

Data Path : Z:\voasrv\HPCHEM1\MSVOA_V\Data\VW121021\
 Data File : VV023894.D
 Acq On : 10 Dec 2021 18:15
 Operator : SY/MD
 Sample : M5003-15
 Misc : 25.0mL/MSVOA_V/WATER
 ALS Vial : 19 Sample Multiplier: 1

Instrument :
 MSVOA_V
 ClientSampleId :

Quant Time: Dec 11 04:47:07 2021
 Quant Method : Z:\voasrv\HPCHEM1\MSVOA_V\Method\SFAMVTR121021WMA.M
 Quant Title : TRACE VOA SFAM1.0
 QLast Update : Sat Dec 11 04:33:17 2021
 Response via : Initial Calibration

Compound	R.T.	QIon	Response	Conc	Units	Dev(Min)

Internal Standards						
1) 1,4-Difluorobenzene	5.619	114	106825	5.000	ug/L	0.00
28) Chlorobenzene-d5	8.854	117	112025	5.000	ug/L	0.00
58) 1,4-Dichlorobenzene-d4	11.249	152	56613	5.000	ug/L	0.00
System Monitoring Compounds						
4) Vinyl Chloride-d3	1.304	65	27099	4.719	ug/L	0.00
Spiked Amount	5.000	Range 40 - 130	Recovery	=	94.400%	
7) Chloroethane-d5	1.568	69	23689	4.944	ug/L	0.00
Spiked Amount	5.000	Range 65 - 130	Recovery	=	98.800%	
11) 1,1-Dichloroethene-d2	2.108	63	35864	3.199	ug/L	0.00
Spiked Amount	5.000	Range 60 - 125	Recovery	=	64.000%	
20) 2-Butanone-d5	3.915	46	44297	39.481	ug/L	0.01
Spiked Amount	50.000	Range 40 - 130	Recovery	=	78.960%	
24) Chloroform-d	4.352	84	61491	4.727	ug/L	0.00
Spiked Amount	5.000	Range 70 - 125	Recovery	=	94.600%	
26) 1,2-Dichloroethane-d4	5.037	65	30112	4.972	ug/L	0.00
Spiked Amount	5.000	Range 70 - 130	Recovery	=	99.400%	
32) Benzene-d6	5.050	84	106002	4.777	ug/L	0.00
Spiked Amount	5.000	Range 70 - 125	Recovery	=	95.600%	
36) 1,2-Dichloropropane-d6	6.069	67	33402	4.990	ug/L	0.00
Spiked Amount	5.000	Range 60 - 140	Recovery	=	99.800%	
41) Toluene-d8	7.317	98	83897	4.200	ug/L	0.00
Spiked Amount	5.000	Range 70 - 130	Recovery	=	84.000%	
43) trans-1,3-Dichloroprop...	7.629	79	12564	4.524	ug/L	0.00
Spiked Amount	5.000	Range 55 - 130	Recovery	=	90.400%	
46) 2-Hexanone-d5	8.092	63	57571	46.309	ug/L	0.00
Spiked Amount	50.000	Range 45 - 130	Recovery	=	92.620%	
56) 1,1,2,2-Tetrachloroeth...	10.217	84	25980	4.678	ug/L	0.00
Spiked Amount	5.000	Range 65 - 120	Recovery	=	93.600%	
66) 1,2-Dichlorobenzene-d4	11.625	152	39323	5.200	ug/L	0.00
Spiked Amount	5.000	Range 80 - 120	Recovery	=	104.000%	

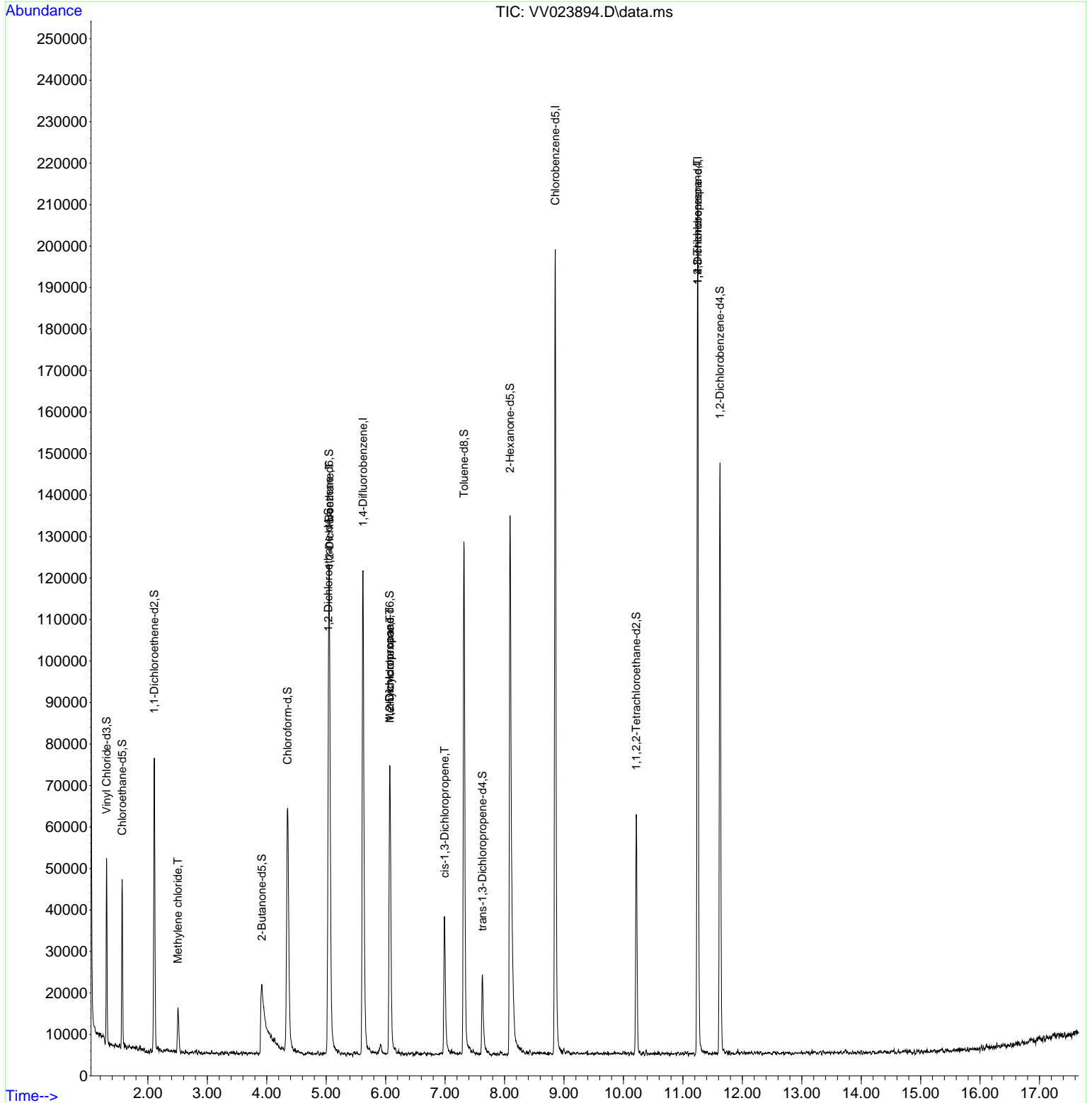
Target Compounds						Qvalue
16) Methylene chloride	2.507	84	4240	0.452	ug/L	91
27) 1,2-Dichloroethane	5.056	62	693	0.081	ug/L #	73
35) Methylcyclohexane	6.072	83	8559	0.651	ug/L #	21
37) 1,2-Dichloropropane	6.069	63	3759	0.499	ug/L #	84
39) cis-1,3-Dichloropropene	6.992	75	1093	0.098	ug/L #	43
61) 1,2,3-Trichloropropane	11.246	75	6181	1.603	ug/L #	64

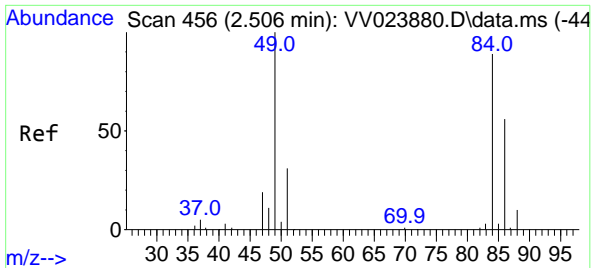
(#) = qualifier out of range (m) = manual integration (+) = signals summed

Data Path : Z:\voasrv\HPCHEM1\MSVOA_V\Data\VV121021\
 Data File : VV023894.D
 Acq On : 10 Dec 2021 18:15
 Operator : SY/MD
 Sample : M5003-15
 Misc : 25.0mL/MSVOA_V/WATER
 ALS Vial : 19 Sample Multiplier: 1

Instrument :
 MSVOA_V
 ClientSampleId :

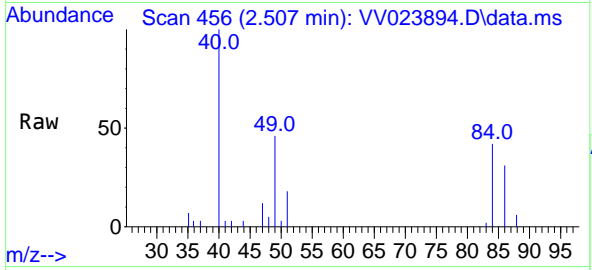
Quant Time: Dec 11 04:47:07 2021
 Quant Method : Z:\voasrv\HPCHEM1\MSVOA_V\Method\SFAMVTR121021WMA.M
 Quant Title : TRACE VOA SFAM1.0
 QLast Update : Sat Dec 11 04:33:17 2021
 Response via : Initial Calibration



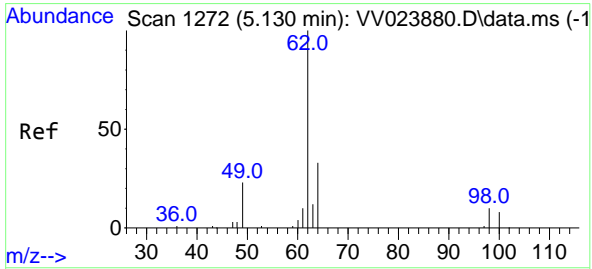
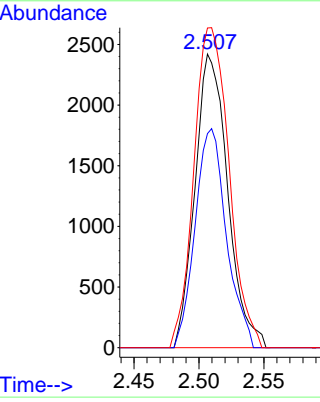
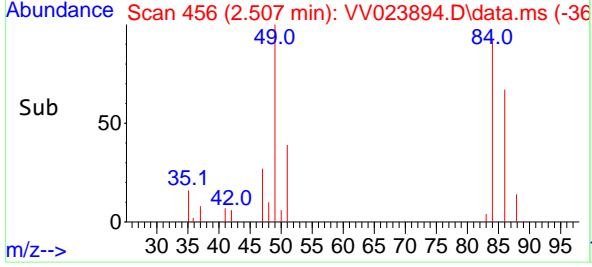


#16
 Methylene chloride
 Concen: 0.452 ug/L
 RT: 2.507 min Scan# 41
 Delta R.T. 0.000 min
 Lab File: VV023894.D
 Acq: 10 Dec 2021 18:15

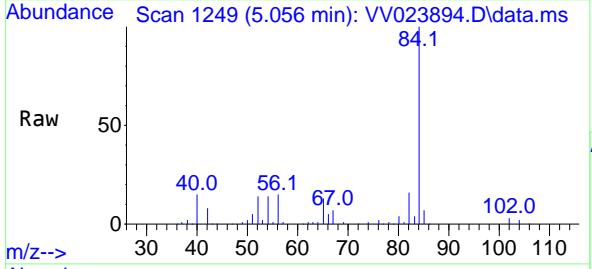
Instrument : MSVOA_V
 ClientSampleId :



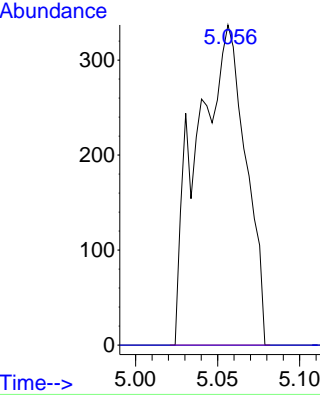
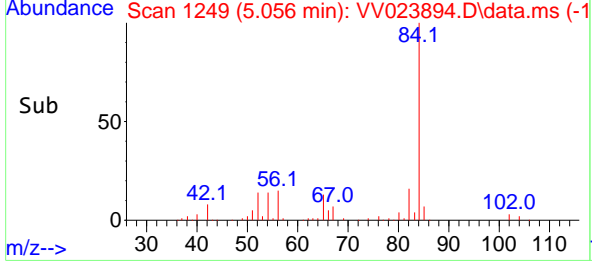
Tgt Ion: 84 Resp: 4240
 Ion Ratio Lower Upper
 84 100
 86 72.9 42.6 79.0
 49 108.8 79.7 147.9

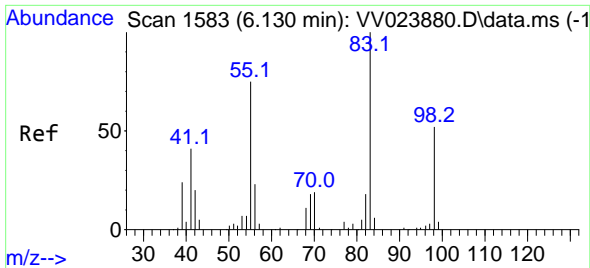


#27
 1,2-Dichloroethane
 Concen: 0.081 ug/L
 RT: 5.056 min Scan# 1249
 Delta R.T. -0.074 min
 Lab File: VV023894.D
 Acq: 10 Dec 2021 18:15



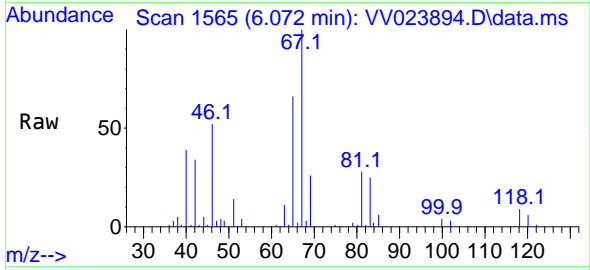
Tgt Ion: 62 Resp: 693
 Ion Ratio Lower Upper
 62 100
 98 0.0 8.1 12.1#



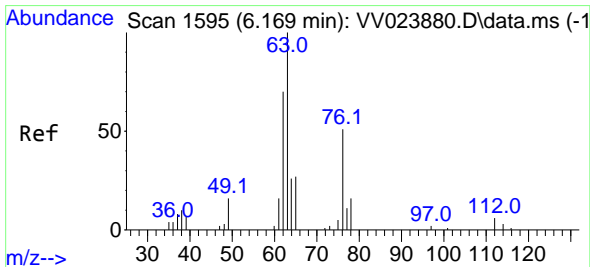
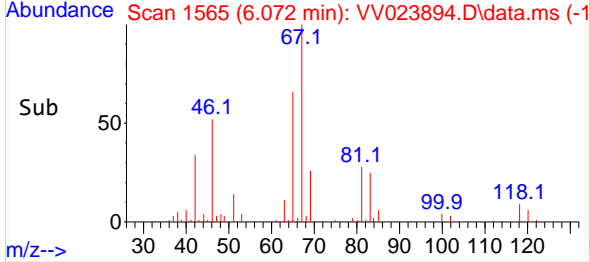
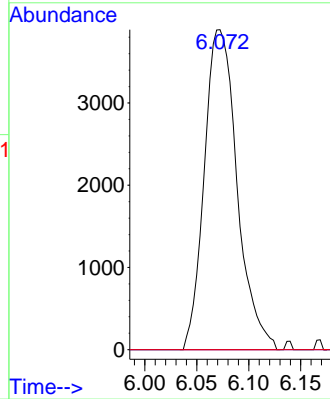


#35
 Methylcyclohexane
 Concen: 0.651 ug/L
 RT: 6.072 min Scan# 1565
 Delta R.T. -0.058 min
 Lab File: VV023894.D
 Acq: 10 Dec 2021 18:15

Instrument :
 MSVOA_V
 ClientSampleId :

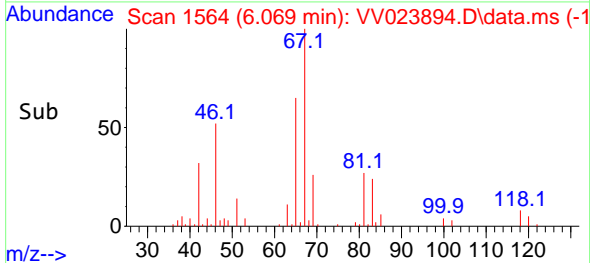
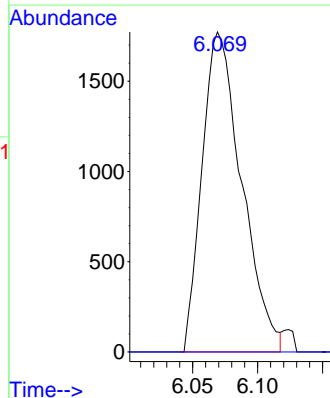
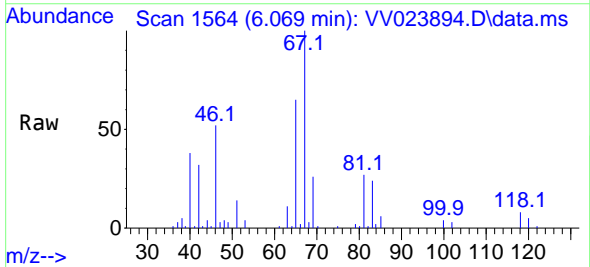


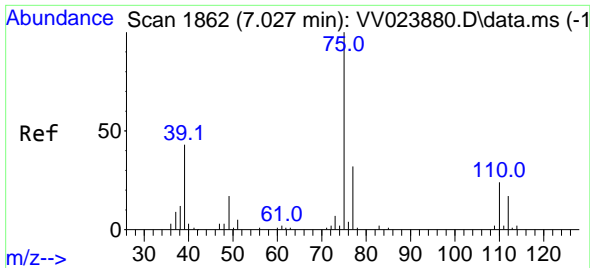
Tgt Ion: 83 Resp: 8559
 Ion Ratio Lower Upper
 83 100
 55 0.0 60.2 90.2#
 98 5.1 41.0 61.4#



#37
 1,2-Dichloropropane
 Concen: 0.499 ug/L
 RT: 6.069 min Scan# 1564
 Delta R.T. -0.100 min
 Lab File: VV023894.D
 Acq: 10 Dec 2021 18:15

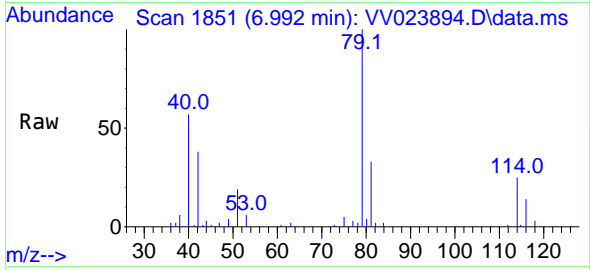
Tgt Ion: 63 Resp: 3759
 Ion Ratio Lower Upper
 63 100
 112 0.0 4.3 6.5#



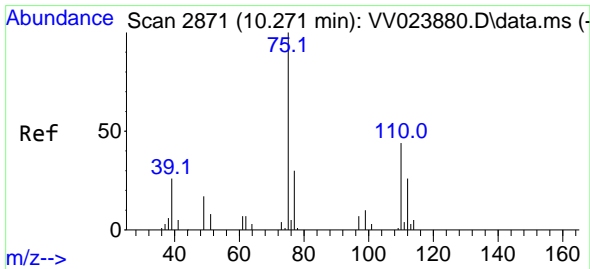
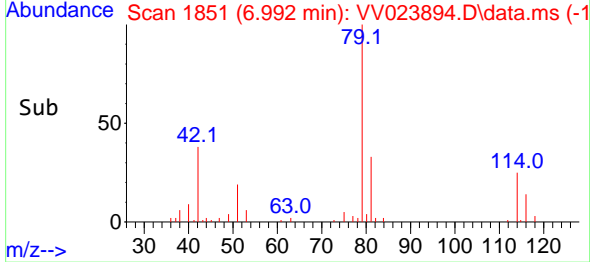
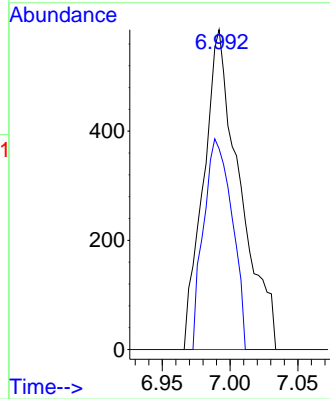


#39
 cis-1,3-Dichloropropene
 Concen: 0.098 ug/L
 RT: 6.992 min Scan# 11
 Delta R.T. -0.035 min
 Lab File: VV023894.D
 Acq: 10 Dec 2021 18:15

Instrument : MSVOA_V
 ClientSampleId :



Tgt Ion: 75 Resp: 1093
 Ion Ratio Lower Upper
 75 100
 77 62.8 22.0 41.0#



#61
 1,2,3-Trichloropropane
 Concen: 1.603 ug/L
 RT: 11.246 min Scan# 3174
 Delta R.T. 0.974 min
 Lab File: VV023894.D
 Acq: 10 Dec 2021 18:15

Tgt Ion: 75 Resp: 6181
 Ion Ratio Lower Upper
 75 100
 77 32.6 26.4 39.6
 110 2.2 34.2 51.2#

