

Data Path : Z:\voasrv\HPCHEM1\MSVOA_V\Data\VW121021\
 Data File : VW023900.D
 Acq On : 10 Dec 2021 20:38
 Operator : SY/MD
 Sample : M4984-17
 Misc : 25.0mL/MSVOA_V/WATER
 ALS Vial : 25 Sample Multiplier: 1

Instrument :
 MSVOA_V
 ClientSampleId :
 EW5S9

Integration Parameters: rteint.p
 Integrator: RTE
 Smoothing : ON
 Sampling : 1
 Start Thrs : 0.1
 Stop Thrs : 0
 Filtering: 5
 Min Area: 3 % of largest Peak
 Max Peaks: 100
 Peak Location: TOP

If leading or trailing edge < 100 prefer < Baseline drop else tangent >
 Peak separation: 5

Method : Z:\voasrv\HPCHEM1\MSVOA_V\Method\SFAMVTR121021WMA.M
 Title : TRACE VOA SFAM1.0

Signal : TIC: VW023900.D\data.ms

| peak # | R.T. min | first scan | max scan | last scan | PK TY | peak height | corr. area | corr. % max. | % of total |
|--------|----------|------------|----------|-----------|-------|-------------|------------|--------------|------------|
| 1 | 1.214 | 48 | 54 | 60 | rBV2 | 10369 | 9682 | 3.05% | 0.350% |
| 2 | 1.307 | 74 | 83 | 95 | rVB | 44665 | 48438 | 15.26% | 1.750% |
| 3 | 1.568 | 157 | 164 | 174 | rBV | 41442 | 45323 | 14.28% | 1.638% |
| 4 | 2.111 | 317 | 333 | 343 | rBV | 67047 | 97452 | 30.70% | 3.521% |
| 5 | 3.899 | 878 | 889 | 917 | rBV | 30452 | 109294 | 34.43% | 3.949% |
| 6 | 4.349 | 1015 | 1029 | 1060 | rBV2 | 56575 | 151743 | 47.81% | 5.483% |
| 7 | 5.050 | 1231 | 1247 | 1279 | rBV4 | 114183 | 291109 | 91.72% | 10.519% |
| 8 | 5.619 | 1412 | 1424 | 1448 | rBV | 114525 | 236557 | 74.53% | 8.548% |
| 9 | 6.072 | 1548 | 1565 | 1585 | rBV | 69600 | 145828 | 45.94% | 5.269% |
| 10 | 6.989 | 1841 | 1850 | 1868 | rBV | 33597 | 63806 | 20.10% | 2.306% |
| 11 | 7.317 | 1940 | 1952 | 1972 | rBV | 121726 | 214588 | 67.61% | 7.754% |
| 12 | 7.394 | 1972 | 1976 | 1989 | rVB5 | 3876 | 7267 | 2.29% | 0.263% |
| 13 | 7.628 | 2037 | 2049 | 2068 | rBV | 19868 | 37865 | 11.93% | 1.368% |
| 14 | 7.979 | 2153 | 2158 | 2168 | rVB7 | 2846 | 4187 | 1.32% | 0.151% |
| 15 | 8.091 | 2182 | 2193 | 2218 | rBV | 159306 | 299838 | 94.47% | 10.835% |
| 16 | 8.853 | 2419 | 2430 | 2450 | rBV | 192325 | 317402 | 100.00% | 11.469% |
| 17 | 9.143 | 2510 | 2520 | 2529 | rBV4 | 6072 | 9902 | 3.12% | 0.358% |
| 18 | 9.548 | 2639 | 2646 | 2659 | rBV4 | 8319 | 15465 | 4.87% | 0.559% |
| 19 | 9.818 | 2724 | 2730 | 2740 | rVB4 | 2806 | 4331 | 1.36% | 0.157% |
| 20 | 10.217 | 2843 | 2854 | 2868 | rBV | 55344 | 87819 | 27.67% | 3.173% |
| 21 | 10.381 | 2899 | 2905 | 2917 | rVB2 | 3452 | 5403 | 1.70% | 0.195% |
| 22 | 10.770 | 3019 | 3026 | 3039 | rVB5 | 3475 | 5856 | 1.84% | 0.212% |
| 23 | 10.921 | 3065 | 3073 | 3083 | rVB6 | 3359 | 5154 | 1.62% | 0.186% |
| 24 | 11.249 | 3163 | 3175 | 3199 | rBV | 197119 | 314177 | 98.98% | 11.353% |
| 25 | 11.625 | 3280 | 3292 | 3314 | rVB | 142770 | 228781 | 72.08% | 8.267% |
| 26 | 12.345 | 3509 | 3516 | 3525 | rVB6 | 6911 | 10133 | 3.19% | 0.366% |

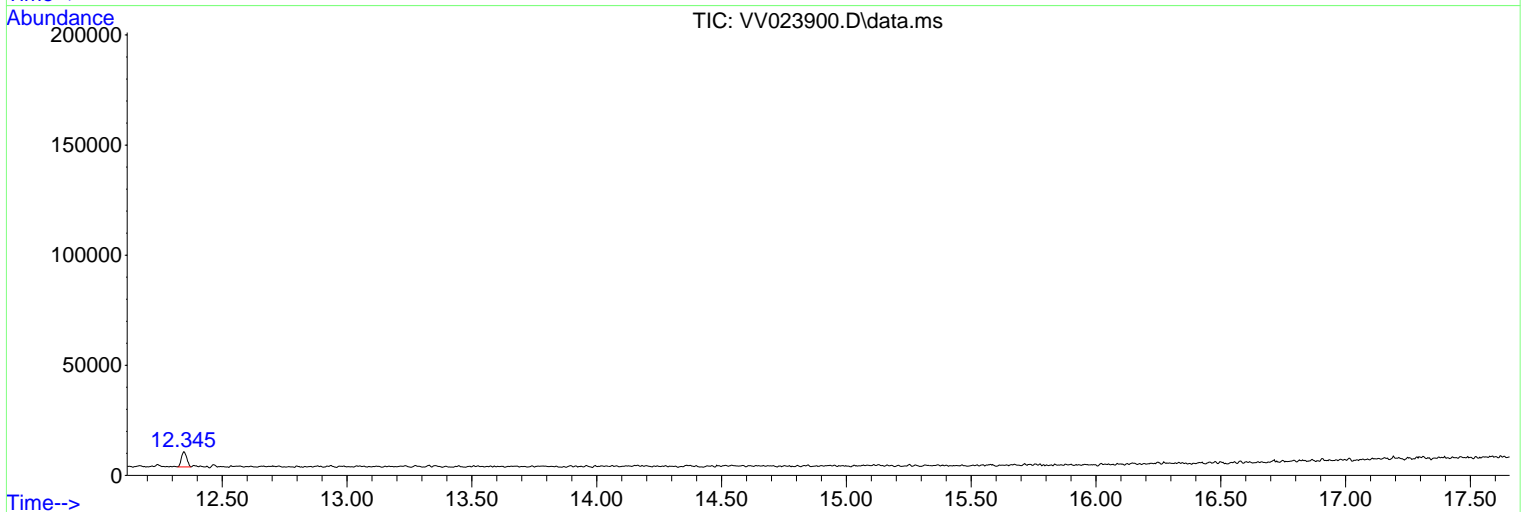
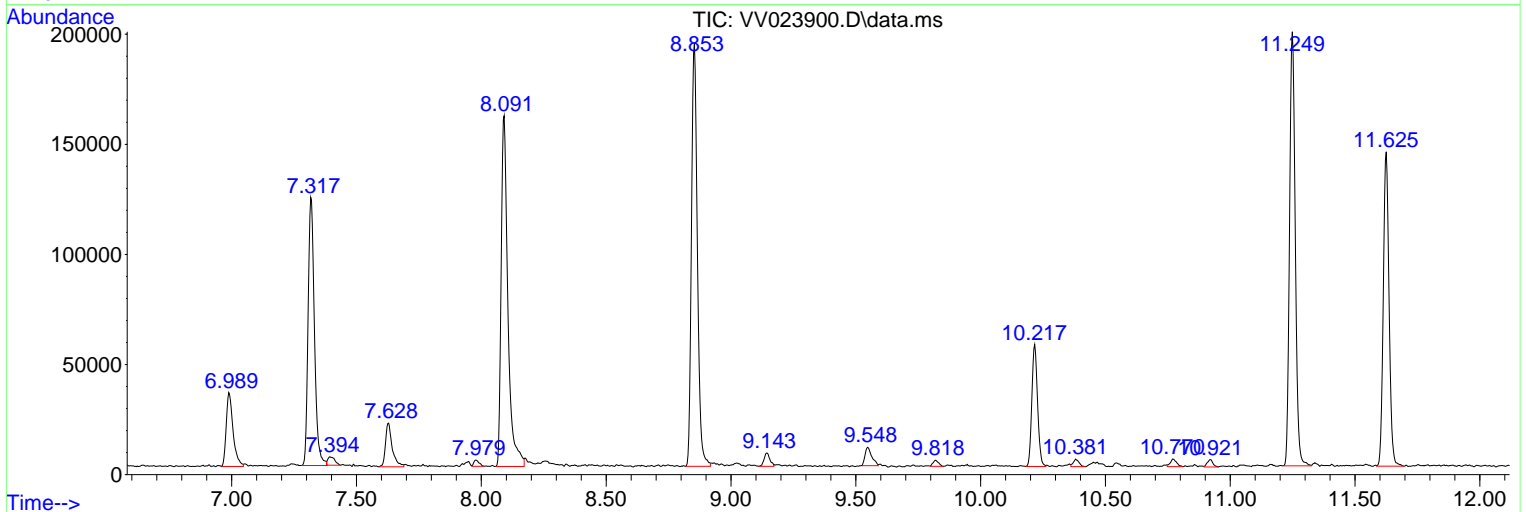
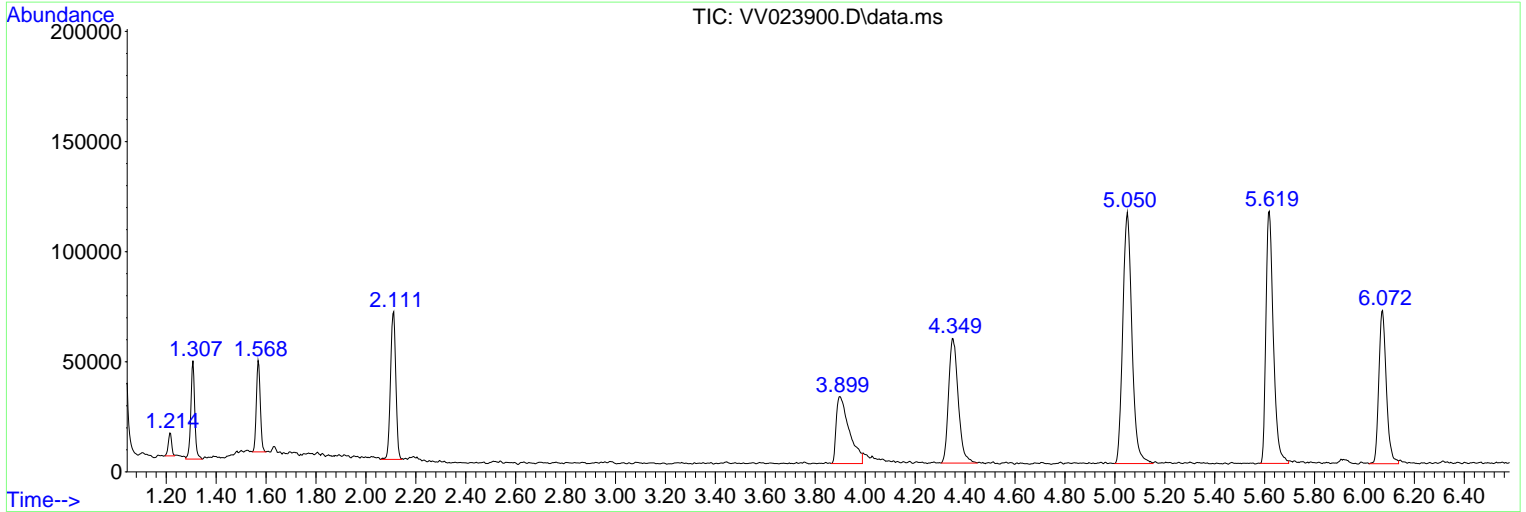
Sum of corrected areas: 2767400

Data Path : Z:\voasrv\HPCHEM1\MSVOA_V\Data\VV121021\
 Data File : VV023900.D
 Acq On : 10 Dec 2021 20:38
 Operator : SY/MD
 Sample : M4984-17
 Misc : 25.0mL/MSVOA_V/WATER
 ALS Vial : 25 Sample Multiplier: 1

Instrument :
 MSVOA_V
 ClientSampleId :
 EW5S9

Quant Method : Z:\voasrv\HPCHEM1\MSVOA_V\Method\SFAMVTR121021WMA.M
 Quant Title : TRACE VOA SFAM1.0

TIC Library : C:\Database\NIST20.L
 TIC Integration Parameters: LSCINT.P



Library Search Compound Report

Data Path : Z:\voasrv\HPCHEM1\MSVOA_V\Data\VV121021\
Data File : VV023900.D
Acq On : 10 Dec 2021 20:38
Operator : SY/MD
Sample : M4984-17
Misc : 25.0mL/MSVOA_V/WATER
ALS Vial : 25 Sample Multiplier: 1

Instrument :
MSVOA_V
ClientSampleId :
EW5S9

Quant Method : Z:\voasrv\HPCHEM1\MSVOA_V\Method\SFAMVTR121021WMA.M
Quant Title : TRACE VOA SFAM1.0

TIC Library : C:\Database\NIST20.L
TIC Integration Parameters: LSCINT.P

No Library Search Compounds Detected

Data Path : Z:\voasrv\HPCHEM1\MSVOA_V\Data\VV121021\
Data File : VV023900.D
Acq On : 10 Dec 2021 20:38
Operator : SY/MD
Sample : M4984-17
Misc : 25.0mL/MSVOA_V/WATER
ALS Vial : 25 Sample Multiplier: 1

Instrument :
MSVOA_V
ClientSampleId :
EW5S9

Quant Method : Z:\voasrv\HPCHEM1\MSVOA_V\Method\SFAMVTR121021WMA.M
Quant Title : TRACE VOA SFAM1.0

TIC Library : C:\Database\NIST0.L
TIC Integration Parameters: LSCINT.P

| TIC Top Hit name | RT | EstConc | Units | Response | --Internal Standard-- | | |
|------------------|----|---------|-------|----------|-----------------------|----|-----------|
| | | | | | # | RT | Resp Conc |
