

Data Path : Z:\VOASRV\HPCHEM1\MSVOA V\DATA\VV121119\  
 Data File : VV014006.D  
 Acq On : 11 Dec 2019 12:24  
 Operator : SY/MD  
 Sample : K6200-04  
 Misc : 5.0mL/MSVOA V/WATER  
 ALS Vial : 5 Sample Multiplier: 1

Instrument :  
 MSVOA\_V  
 ClientSampleId :  
 BFF08

Integration Parameters: LSCINT.P

Integrator: RTE  
 Smoothing : OFF  
 Sampling : 1  
 Start Thrs: 0.2  
 Stop Thrs : 0

Filtering: 5  
 Min Area: 0 % of largest Peak  
 Max Peaks: 100  
 Peak Location: TOP

If leading or trailing edge < 100 prefer < Baseline drop else tangent >  
 Peak separation: 5

Method : Z:\VOASRV\HPCHEM1\MSVOA\_V\METHOD\SOMVLM120219WMA.M  
 Title : VOC Analysis

Signal : TIC

peak #	R.T. min	first scan	max scan	last scan	PK TY	peak height	corr. area	corr. % max.	% of total
1	1.556	140	145	157	rVB	299275	352472	16.24%	1.956%
2	2.119	313	320	335	rVB	505057	694629	32.01%	3.855%
3	2.396	404	406	408	rBV3	1675	855	0.04%	0.005%
4	2.637	476	481	484	rBV5	2706	2993	0.14%	0.017%
5	2.740	511	513	514	rBV2	1024	312	0.01%	0.002%
6	2.814	532	536	539	rBV4	1486	1285	0.06%	0.007%
7	2.865	550	552	554	rBV2	878	521	0.02%	0.003%
8	2.926	569	571	572	rBV	1196	472	0.02%	0.003%
9	2.965	581	583	585	rBV	1403	862	0.04%	0.005%
10	3.087	619	621	622	rBV2	629	240	0.01%	0.001%
11	3.183	649	651	652	rBV2	975	369	0.02%	0.002%
12	3.196	652	655	658	rVV	1168	617	0.03%	0.003%
13	3.222	662	663	664	rBV	870	251	0.01%	0.001%
14	3.270	676	678	679	rVB	603	162	0.01%	0.001%
15	3.283	679	682	683	rBV3	951	651	0.03%	0.004%
16	3.354	702	704	707	rVB3	619	319	0.01%	0.002%
17	3.376	710	711	713	rVB2	879	241	0.01%	0.001%
18	3.399	713	718	719	rBV4	1227	909	0.04%	0.005%
19	3.428	725	727	729	rVB2	930	430	0.02%	0.002%
20	3.447	729	733	736	rVB5	991	708	0.03%	0.004%
21	3.466	736	739	742	rBV3	946	681	0.03%	0.004%
22	3.489	743	746	748	rVV2	870	654	0.03%	0.004%
23	3.511	751	753	754	rVB	438	144	0.01%	0.001%
24	3.521	754	756	758	rBV2	641	353	0.02%	0.002%
25	3.598	777	780	781	rBV3	990	512	0.02%	0.003%
26	3.708	813	814	817	rBV3	343	204	0.01%	0.001%
27	3.720	817	818	819	rBV	607	174	0.01%	0.001%
28	3.807	842	845	849	rBV4	861	553	0.03%	0.003%
29	3.830	849	852	854	rBV3	853	574	0.03%	0.003%
30	3.852	854	859	860	rBV2	929	713	0.03%	0.004%
31	3.920	868	880	914	rBV	139928	383268	17.66%	2.127%
32	4.392	1011	1027	1058	rBV2	367303	988474	45.56%	5.486%
33	4.740	1133	1135	1136	rBV	1138	448	0.02%	0.002%
34	4.949	1197	1200	1202	rBV3	1423	809	0.04%	0.004%

Data Path : Z:\VOASRV\HPCHEM1\MSVOA V\DATA\VV121119\  
 Data File : VV014006.D  
 Acq On : 11 Dec 2019 12:24  
 Operator : SY/MD  
 Sample : K6200-04  
 Misc : 5.0mL/MSVOA V/WATER  
 ALS Vial : 5 Sample Multiplier: 1

Instrument :  
 MSVOA\_V  
 ClientSampleId :  
 BFF08

## Integration Parameters: LSCINT.P

Integrator: RTE  
 Smoothing : OFF  
 Sampling : 1  
 Start Thrs: 0.2  
 Stop Thrs : 0

Filtering: 5  
 Min Area: 0 % of largest Peak  
 Max Peaks: 100  
 Peak Location: TOP

If leading or trailing edge < 100 prefer < Baseline drop else tangent >  
 Peak separation: 5

Method : Z:\VOASRV\HPCHEM1\MSVOA\_V\METHOD\SOMVLM120219WMA.M  
 Title : VOC Analysis

35	5.087	1223	1243	1270	rBV2	868183	2169812	100.00%	12.042%
36	5.502	1370	1372	1375	rBV3	1605	1078	0.05%	0.006%
37	5.656	1407	1420	1441	rBV	711070	1391570	64.13%	7.723%
38	5.862	1482	1484	1486	rBV3	1578	1011	0.05%	0.006%
39	5.942	1500	1509	1521	rBV3	34411	66635	3.07%	0.370%
40	6.109	1547	1561	1586	rBV	487936	986349	45.46%	5.474%
41	6.415	1654	1656	1657	rBV2	1039	448	0.02%	0.002%
42	6.550	1683	1698	1714	rBV	175212	330980	15.25%	1.837%
43	6.849	1788	1791	1793	rBV3	1364	656	0.03%	0.004%
44	6.862	1793	1795	1798	rVV2	757	520	0.02%	0.003%
45	7.022	1835	1845	1859	rBV	188216	329108	15.17%	1.826%
46	7.354	1936	1948	1968	rBV	641201	1111339	51.22%	6.168%
47	7.659	2032	2043	2071	rBV	136625	250050	11.52%	1.388%
48	7.807	2086	2089	2091	rBV4	1791	1074	0.05%	0.006%
49	7.842	2095	2100	2104	rBV7	1753	1924	0.09%	0.011%
50	8.129	2176	2189	2221	rBV2	411033	876711	40.40%	4.866%
51	8.283	2227	2237	2255	rVB	559119	933958	43.04%	5.183%
52	8.768	2385	2388	2391	rBV3	1367	980	0.05%	0.005%
53	8.784	2391	2393	2396	rBV2	1183	642	0.03%	0.004%
54	8.826	2401	2406	2408	rBV3	1645	1429	0.07%	0.008%
55	8.891	2414	2426	2444	rBV	1044820	1660691	76.54%	9.216%
56	9.129	2497	2500	2502	rBV3	1693	942	0.04%	0.005%
57	9.341	2563	2566	2568	rVB3	1425	853	0.04%	0.005%
58	9.360	2568	2572	2574	rBV4	1169	856	0.04%	0.005%
59	9.399	2580	2584	2586	rBV3	1587	1146	0.05%	0.006%
60	9.463	2601	2604	2609	rBV5	2022	1535	0.07%	0.009%
61	9.485	2609	2611	2613	rBV2	988	598	0.03%	0.003%
62	9.575	2637	2639	2640	rBV2	739	299	0.01%	0.002%
63	9.694	2671	2676	2677	rBV4	1164	880	0.04%	0.005%
64	9.720	2682	2684	2686	rBV	973	539	0.02%	0.003%
65	9.768	2687	2699	2718	rVV	662721	1079920	49.77%	5.993%
66	9.936	2749	2751	2753	rBV3	1015	520	0.02%	0.003%
67	10.022	2774	2778	2781	rBV4	1758	1416	0.07%	0.008%
68	10.177	2824	2826	2827	rBV2	802	293	0.01%	0.002%
69	10.209	2832	2836	2838	rBV4	1134	789	0.04%	0.004%
70	10.254	2838	2850	2869	rBV	614011	979713	45.15%	5.437%
71	10.350	2879	2880	2882	rVB2	1068	353	0.02%	0.002%

Data Path : Z:\VOASRV\HPCHEM1\MSVOA V\DATA\VV121119\  
 Data File : VV014006.D  
 Acq On : 11 Dec 2019 12:24  
 Operator : SY/MD  
 Sample : K6200-04  
 Misc : 5.0mL/MSVOA V/WATER  
 ALS Vial : 5 Sample Multiplier: 1

Instrument :  
 MSVOA\_V  
 ClientSampleId :  
 BFF08

## Integration Parameters: LSCINT.P

Integrator: RTE  
 Smoothing : OFF Filtering: 5  
 Sampling : 1 Min Area: 0 % of largest Peak  
 Start Thrs: 0.2 Max Peaks: 100  
 Stop Thrs : 0 Peak Location: TOP

If leading or trailing edge < 100 prefer < Baseline drop else tangent >  
 Peak separation: 5

Method : Z:\VOASRV\HPCHEM1\MSVOA\_V\METHOD\SOMVLM120219WMA.M  
 Title : VOC Analysis

72	10.411	2888	2899	2913	rBV	66991	112004	5.16%	0.622%
73	10.530	2929	2936	2947	rVB2	24159	38429	1.77%	0.213%
74	10.791	3010	3017	3019	rBV8	1517	1860	0.09%	0.010%
75	10.884	3044	3046	3050	rBV3	1694	1168	0.05%	0.006%
76	10.955	3064	3068	3071	rBV3	2464	2218	0.10%	0.012%
77	11.032	3091	3092	3093	rBV3	717	195	0.01%	0.001%
78	11.093	3109	3111	3114	rBV2	766	379	0.02%	0.002%
79	11.112	3114	3117	3119	rBV4	1052	673	0.03%	0.004%
80	11.289	3159	3172	3189	rBV	897515	1396707	64.37%	7.751%
81	11.546	3249	3252	3254	rBV3	1667	1098	0.05%	0.006%
82	11.588	3254	3265	3276	rVV2	86233	143418	6.61%	0.796%
83	11.665	3278	3289	3318	rVB2	922940	1690607	77.91%	9.382%
84	12.405	3515	3519	3521	rBV3	1629	1083	0.05%	0.006%
85	12.546	3561	3563	3566	rBV4	799	706	0.03%	0.004%
86	12.678	3602	3604	3606	rBV3	1819	956	0.04%	0.005%
87	13.122	3739	3742	3745	rBV3	1941	1168	0.05%	0.006%
88	13.296	3793	3796	3797	rBV2	2273	1264	0.06%	0.007%
89	13.373	3818	3820	3822	rBV3	1156	433	0.02%	0.002%

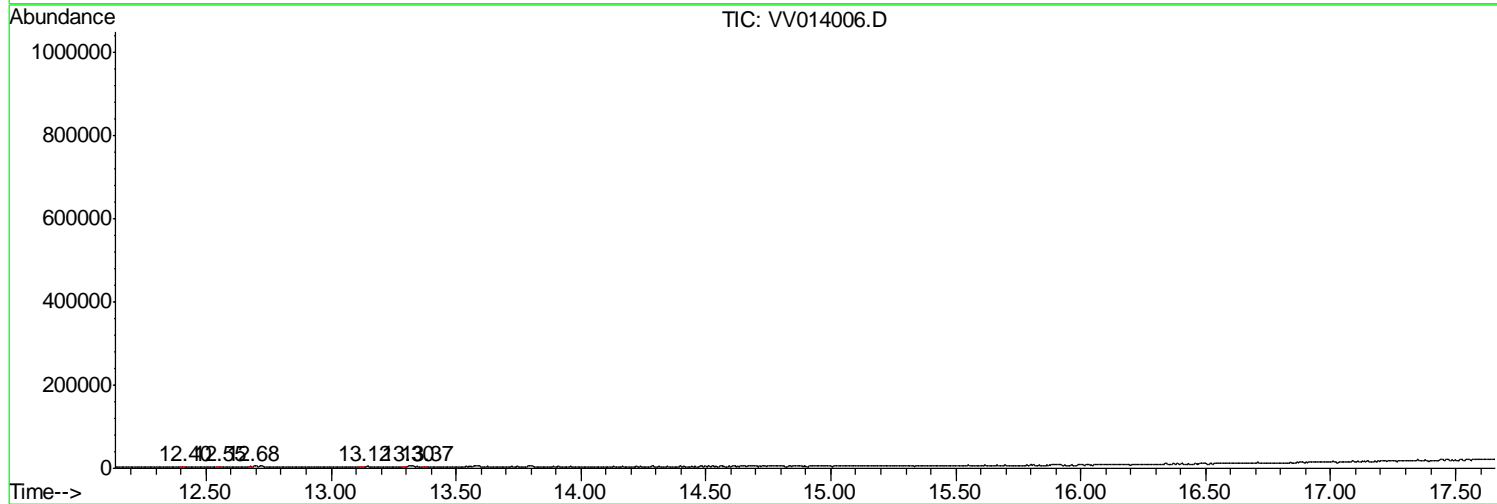
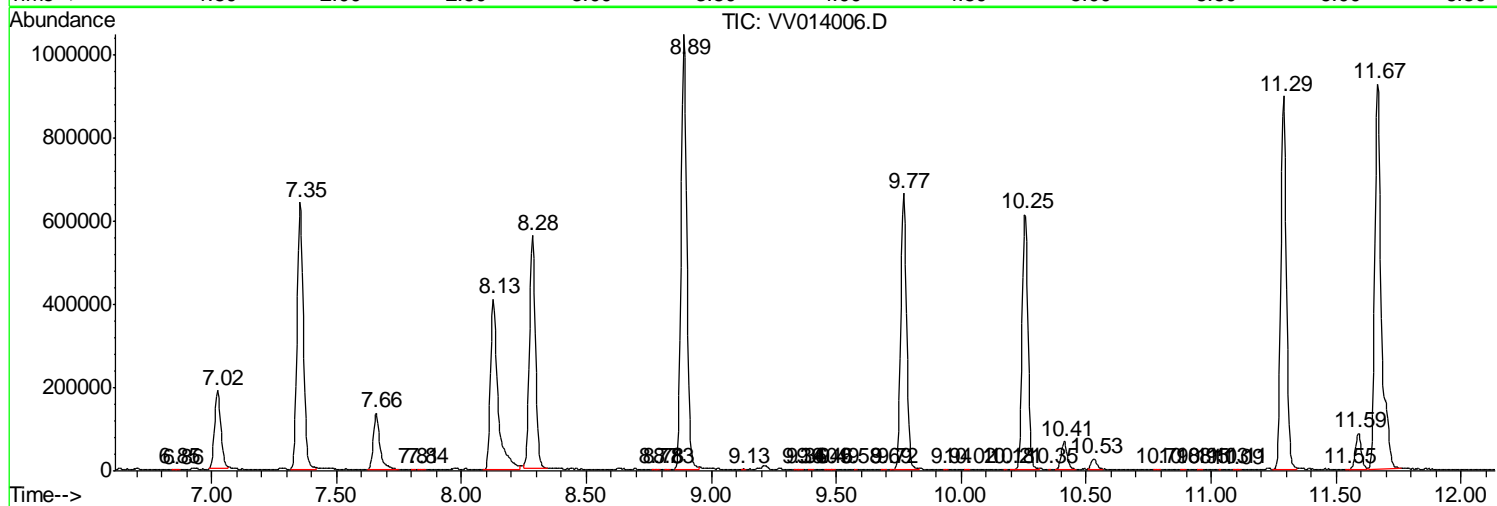
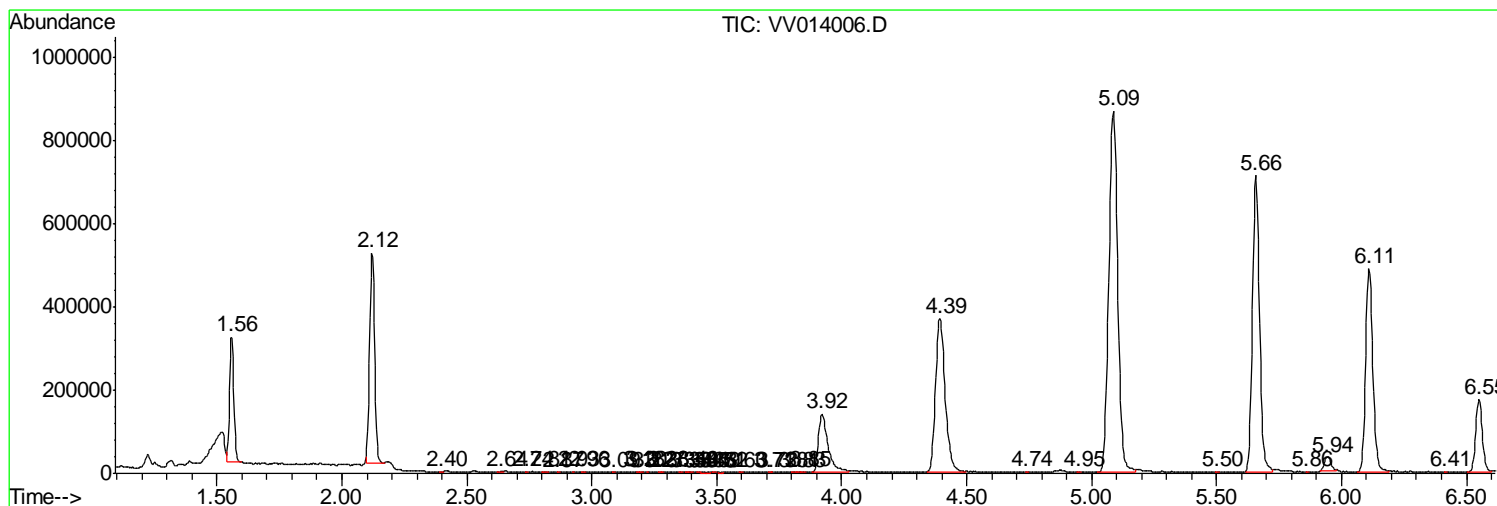
Sum of corrected areas: 18018842

Data Path : Z:\VOASRV\HPCHEM1\MSVOA V\DATA\VV121119\  
 Data File : VV014006.D  
 Acq On : 11 Dec 2019 12:24  
 Operator : SY/MD  
 Sample : K6200-04  
 Misc : 5.0mL/MSVOA V/WATER  
 ALS Vial : 5 Sample Multiplier: 1

Instrument :  
 MSVOA\_V  
 ClientSampled :  
 BFF08

Quant Method : Z:\VOASRV\HPCHEM1\MSVOA\_V\METHOD\SOMVLM120219WMA.M  
 Quant Title : VOC Analysis

TIC Library : C:\DATABASE\NIST11.L  
 TIC Integration Parameters: LSCINT.P



Data Path : Z:\VOASRV\HPCHEM1\MSVOA V\DATA\VV121119\  
 Data File : VV014006.D  
 Acq On : 11 Dec 2019 12:24  
 Operator : SY/MD  
 Sample : K6200-04  
 Misc : 5.0mL/MSVOA V/WATER  
 ALS Vial : 5 Sample Multiplier: 1

Instrument :  
 MSVOA\_V  
 ClientSampleID :  
 BFF08

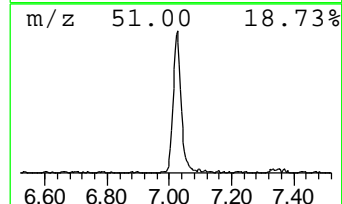
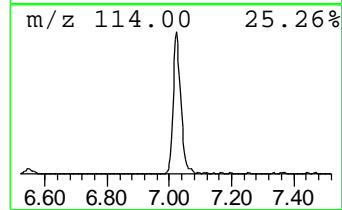
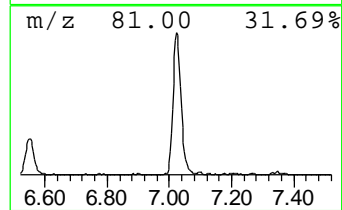
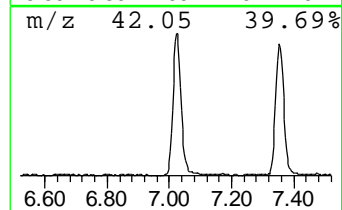
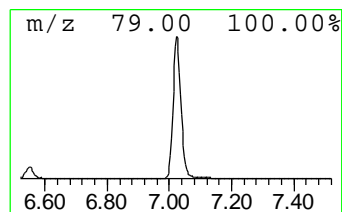
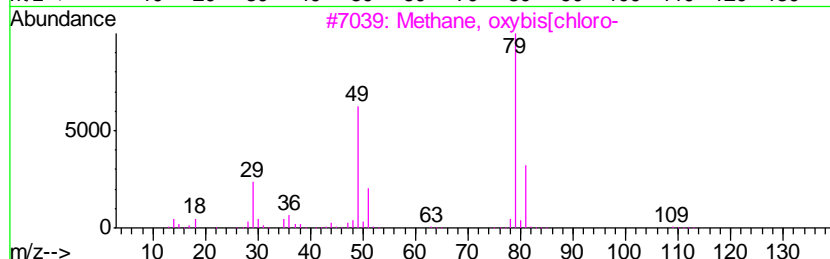
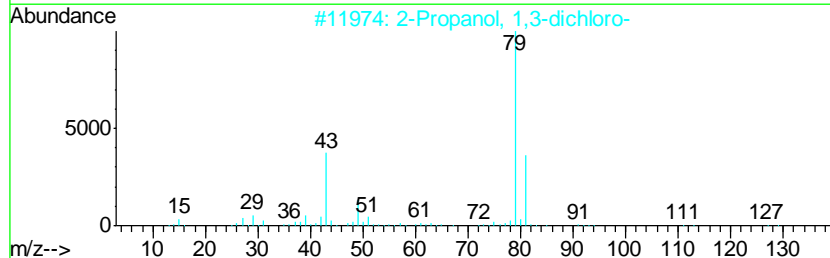
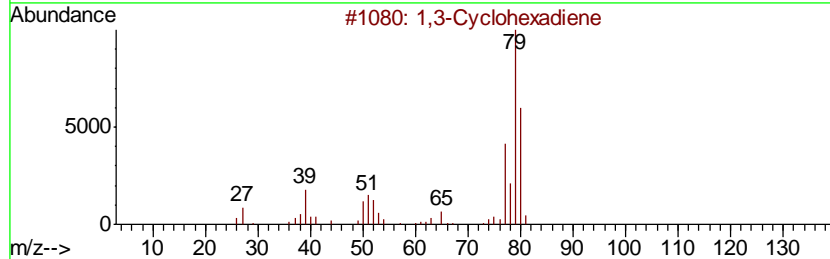
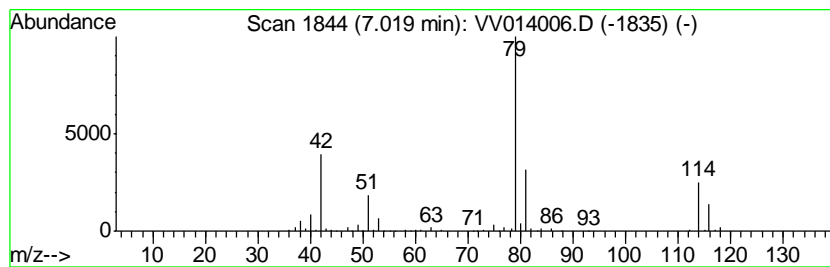
Quant Method : Z:\VOASRV\HPCHEM1\MSVOA\_V\METHOD\SOMVLM120219WMA.M  
 Quant Title : VOC Analysis

TIC Library : C:\DATABASE\NIST11.L  
 TIC Integration Parameters: LSCINT.P

\*\*\*\*\*  
 Peak Number 1 unknown-01 Concentration Rank 1

R.T.	EstConc	Area	Relative to ISTD	R.T.
7.02	11.83 ug/L	329108	1,4-Difluorobenzene	5.66

Hit#	of	Tentative ID	MW	MolForm	CAS#	Qual
1	5	1,3-Cyclohexadiene	80	C6H8	000592-57-4	25
2		2-Propanol, 1,3-dichloro-	128	C3H6Cl2O	000096-23-1	23
3		Methane, oxybis[chloro-	114	C2H4Cl2O	000542-88-1	10
4		3-Thiatricyclo[3.1.1.0(2,4)]heptane	112	C6H8S	1000221-37-0	9
5		1,3-Cyclohexadiene	80	C6H8	000592-57-4	9



Data Path : Z:\VOASRV\HPCHEM1\MSVOA V\DATA\VV121119\  
 Data File : VV014006.D  
 Acq On : 11 Dec 2019 12:24  
 Operator : SY/MD  
 Sample : K6200-04  
 Misc : 5.0mL/MSVOA V/WATER  
 ALS Vial : 5 Sample Multiplier: 1

Instrument :  
 MSVOA\_V  
 ClientSampled :  
 BFF08

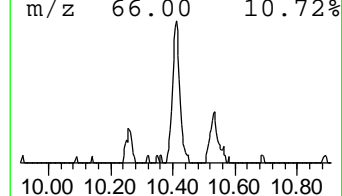
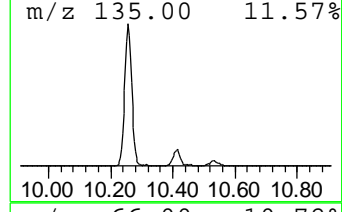
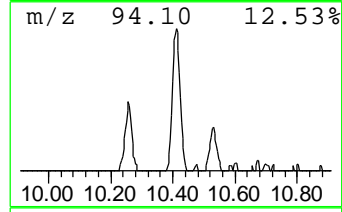
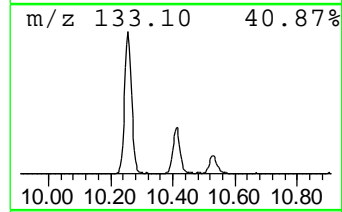
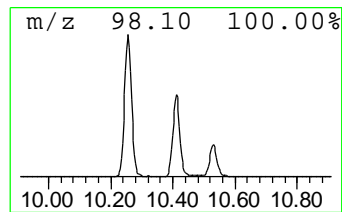
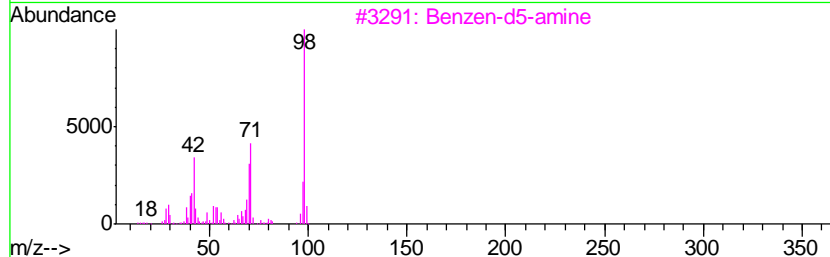
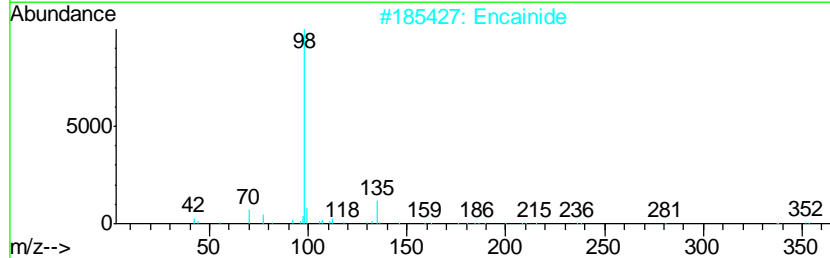
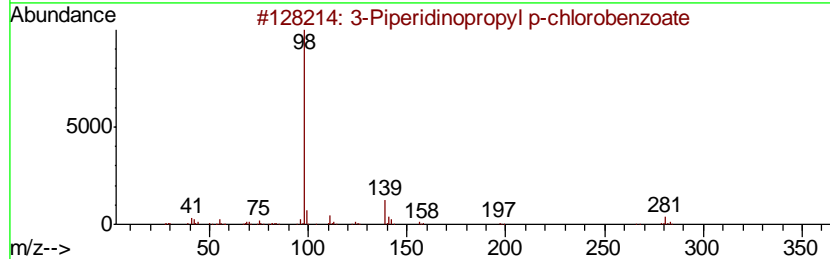
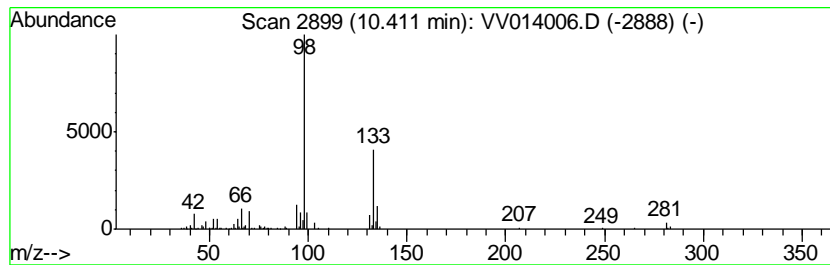
Quant Method : Z:\VOASRV\HPCHEM1\MSVOA\_V\METHOD\SOMVLM120219WMA.M  
 Quant Title : VOC Analysis

TIC Library : C:\DATABASE\NIST11.L  
 TIC Integration Parameters: LSCINT.P

\*\*\*\*\*  
 Peak Number 2 unknown-02 Concentration Rank 3

R.T.	EstConc	Area	Relative to ISTD	R.T.
10.41	4.01 ug/L	112004	1,4-Dichlorobenzene-d4	11.29

Hit#	of	Tentative ID	MW	MolForm	CAS#	Qual
1	5	3-Piperidinopropyl p-chlorobenzoate	281	C15H20ClNO2	1000240-42-7	38
2		Encainide	352	C22H28N2O2	037612-13-8	37
3		Benzen-d5-amine	98	C6H2D5N	004165-61-1	37
4		Acetonitrile, isothiocyanato-	98	C3H2N2S	032772-75-1	32
5		Ethanethiol, 2-(5-(3-bromo-4-pyr...	398	C12H19BrN2O4S2	041287-18-7	28



Data Path : Z:\VOASRV\HPCHEM1\MSVOA V\DATA\VV121119\  
 Data File : VV014006.D  
 Acq On : 11 Dec 2019 12:24  
 Operator : SY/MD  
 Sample : K6200-04  
 Misc : 5.0mL/MSVOA V/WATER  
 ALS Vial : 5 Sample Multiplier: 1

Instrument :  
 MSVOA\_V  
 ClientSampleID :  
 BFF08

Quant Method : Z:\VOASRV\HPCHEM1\MSVOA\_V\METHOD\SOMVLM120219WMA.M  
 Quant Title : VOC Analysis

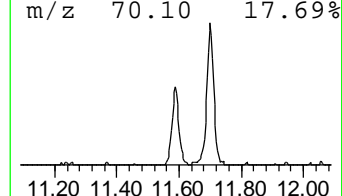
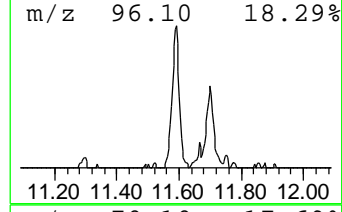
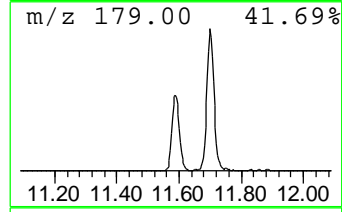
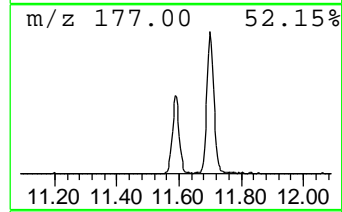
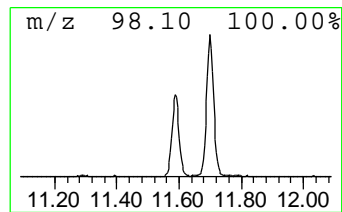
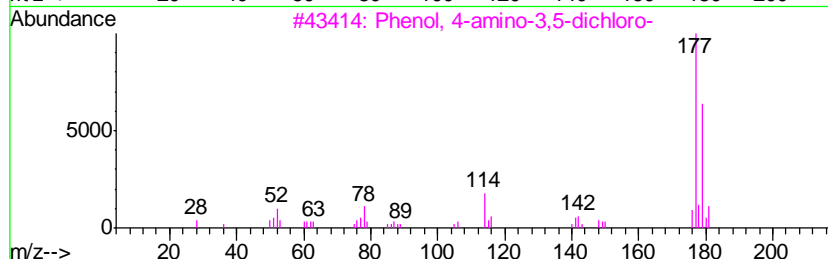
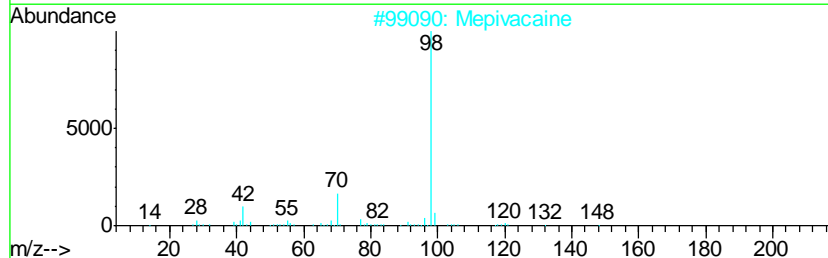
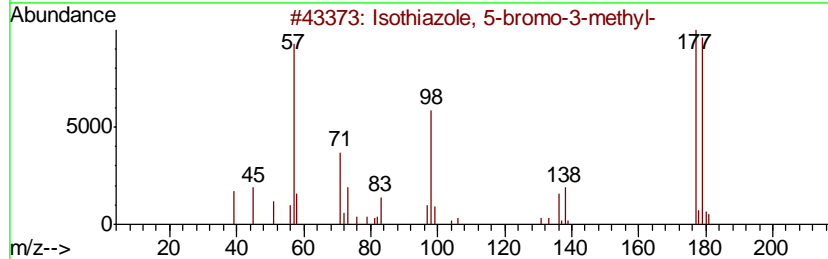
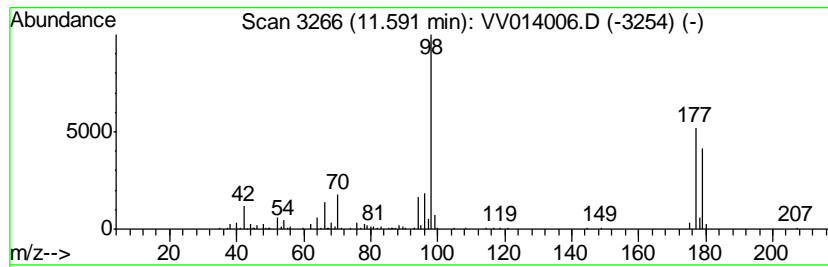
TIC Library : C:\DATABASE\NIST11.L  
 TIC Integration Parameters: LSCINT.P

\*\*\*\*\*  
 Peak Number 3 unknown-03 Concentration Rank 2

R.T.	EstConc	Area	Relative to ISTD	R.T.
11.59	5.13 ug/L	143418	1,4-Dichlorobenzene-d4	11.29

Hit#	of	Tentative ID	MW	MolForm	CAS#	Qual
1	5	Isothiazole, 5-bromo-3-methyl-	177	C4H4BrNS	020493-60-1	46
2		Mepivacaine	246	C15H22N2O	000096-88-8	27
3		Phenol, 4-amino-3,5-dichloro-	177	C6H5Cl2NO	026271-75-0	27
4		1-Methyl-2-piperidinethanol	129	C7H15NO	020845-34-5	25
5		Phenol, 4-amino-2,6-dichloro-	177	C6H5Cl2NO	005930-28-9	16



Data Path : Z:\VOASRV\HPCHEM1\MSVOA\_V\DATA\VV121119\  
Data File : VV014006.D  
Acq On : 11 Dec 2019 12:24  
Operator : SY/MD  
Sample : K6200-04  
Misc : 5.0mL/MSVOA\_V/WATER  
ALS Vial : 5 Sample Multiplier: 1

Instrument :  
MSVOA\_V  
ClientSampleId :  
BFF08

Quant Method : Z:\VOASRV\HPCHEM1\MSVOA\_V\METHOD\SOMVLM120219WMA.M  
Quant Title : VOC Analysis

TIC Library : C:\DATABASE\NIST11.L  
TIC Integration Parameters: LSCINT.P

TIC Top Hit name	RT	EstConc	Units	Response	--Internal Standard--			
					#	RT	Resp	Conc
unknown-01	7.02	11.8	ug/L	329108	1	5.66	1391570	50.0
unknown-02	10.41	4.0	ug/L	112004	3	11.29	1396710	50.0
unknown-03	11.59	5.1	ug/L	143418	3	11.29	1396710	50.0