

Data Path : Z:\voasrv\HPCHEM1\MSVOA\_V\Data\VW121123\  
 Data File : VV033249.D  
 Acq On : 12 Dec 2023 05:39  
 Operator : SY/MD  
 Sample : 05751-13MS  
 Misc : 5.0mL/MSVOA\_V/WATER  
 ALS Vial : 50 Sample Multiplier: 1

Instrument :  
 MSVOA\_V  
 ClientSampleId :

Quant Time: Dec 12 06:55:40 2023  
 Quant Method : Z:\voasrv\HPCHEM1\MSVOA\_V\Method\SFAMVLM120123WMA.M  
 Quant Title : VOC Analysis  
 QLast Update : Fri Dec 08 21:51:12 2023  
 Response via : Initial Calibration

Compound	R.T.	QIon	Response	Conc	Units	Dev(Min)
Internal Standards						
1) 1,4-Difluorobenzene	5.532	114	273489	50.000	ug/L	0.00
28) Chlorobenzene-d5	8.783	117	280153	50.000	ug/L	0.00
58) 1,4-Dichlorobenzene-d4	11.185	152	171271	50.000	ug/L	0.00
System Monitoring Compounds						
4) Vinyl Chloride-d3	1.278	65	86853	53.124	ug/L	0.00
Spiked Amount	50.000	Range 60 - 135	Recovery	=	106.240%	
7) Chloroethane-d5	1.529	69	62937	55.249	ug/L	0.00
Spiked Amount	50.000	Range 70 - 130	Recovery	=	110.500%	
11) 1,1-Dichloroethene-d2	2.059	65	33314	53.563	ug/L	0.00
Spiked Amount	50.000	Range 60 - 125	Recovery	=	107.120%	
21) 2-Butanone-d5	3.783	46	83988	103.430	ug/L	0.00
Spiked Amount	100.000	Range 40 - 130	Recovery	=	103.430%	
24) Chloroform-d	4.246	84	189318	54.565	ug/L	0.00
Spiked Amount	50.000	Range 70 - 125	Recovery	=	109.120%	
26) 1,2-Dichloroethane-d4	4.940	65	118470	54.920	ug/L	0.00
Spiked Amount	50.000	Range 70 - 125	Recovery	=	109.840%	
32) Benzene-d6	4.960	84	352110	53.740	ug/L	0.00
Spiked Amount	50.000	Range 70 - 125	Recovery	=	107.480%	
36) 1,2-Dichloropropane-d6	5.989	67	88792	50.401	ug/L	0.00
Spiked Amount	50.000	Range 70 - 120	Recovery	=	100.800%	
41) Toluene-d8	7.243	98	353175	56.505	ug/L	0.00
Spiked Amount	50.000	Range 80 - 120	Recovery	=	113.000%	
43) trans-1,3-Dichloroprop...	7.551	79	54850	49.236	ug/L	0.00
Spiked Amount	50.000	Range 60 - 125	Recovery	=	98.480%	
47) 2-Hexanone-d5	8.021	63	74244	104.903	ug/L	0.00
Spiked Amount	100.000	Range 45 - 130	Recovery	=	104.900%	
56) 1,1,2,2-Tetrachloroeth...	10.152	84	139001	55.504	ug/L	0.00
Spiked Amount	50.000	Range 65 - 120	Recovery	=	111.000%	
66) 1,2-Dichlorobenzene-d4	11.561	152	161868	53.118	ug/L	0.00
Spiked Amount	50.000	Range 80 - 120	Recovery	=	106.240%	
Target Compounds						
2) Dichlorodifluoromethane	1.105	85	143079	47.862	ug/L	100
3) Chloromethane	1.214	50	90002	45.648	ug/L	100
5) Vinyl chloride	1.281	62	93793	49.602	ug/L	100
6) Bromomethane	1.484	94	51225	41.516	ug/L	99
8) Chloroethane	1.548	64	52957	52.603	ug/L	97
9) Trichlorofluoromethane	1.712	101	169854	54.437	ug/L	99
10) 1,1,2-Trichloro-1,2,2-...	2.069	101	80963	55.256	ug/L	97
12) 1,1-Dichloroethene	2.069	96	129478	94.432	ug/L	87
13) Acetone	2.108	43	125757	162.223	ug/L	99
14) Carbon disulfide	2.240	76	225902	45.922	ug/L	98
15) Methyl Acetate	2.368	43	53673	41.541	ug/L	96
16) Methylene chloride	2.445	84	91952	50.646	ug/L	96
17) trans-1,2-Dichloroethene	2.693	96	91666	50.919	ug/L	97
18) Methyl tert-butyl Ether	2.699	73	290714	53.158	ug/L	98
19) 1,1-Dichloroethane	3.111	63	161719	54.275	ug/L	98
20) cis-1,2-Dichloroethene	3.815	96	123345	64.572	ug/L	95
22) 2-Butanone	3.860	43	135754	137.607	ug/L	95
23) Bromochloromethane	4.146	128	59095	53.878	ug/L	96
25) Chloroform	4.275	83	188449	54.993	ug/L	93

Data Path : Z:\voasrv\HPCHEM1\MSVOA\_V\Data\VW121123\  
 Data File : VV033249.D  
 Acq On : 12 Dec 2023 05:39  
 Operator : SY/MD  
 Sample : 05751-13MS  
 Misc : 5.0mL/MSVOA\_V/WATER  
 ALS Vial : 50 Sample Multiplier: 1

Instrument :  
 MSVOA\_V  
 ClientSampleId :

Quant Time: Dec 12 06:55:40 2023  
 Quant Method : Z:\voasrv\HPCHEM1\MSVOA\_V\Method\SFAMVLM120123WMA.M  
 Quant Title : VOC Analysis  
 QLast Update : Fri Dec 08 21:51:12 2023  
 Response via : Initial Calibration

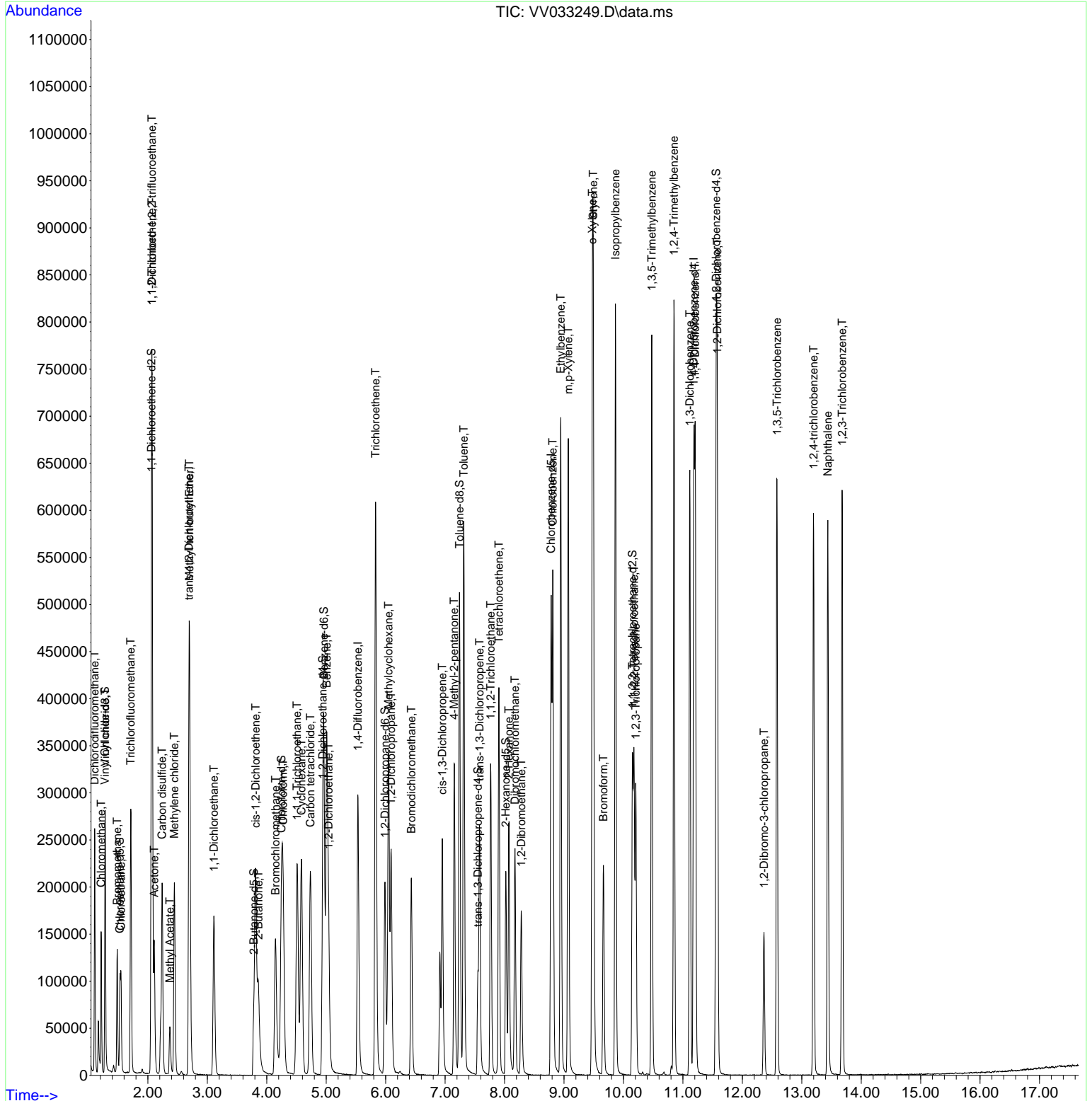
Compound	R.T.	QIon	Response	Conc	Units	Dev(Min)
27) 1,2-Dichloroethane	5.040	62	145053	53.567	ug/L	99
29) Cyclohexane	4.583	56	121177	46.830	ug/L	95
30) 1,1,1-Trichloroethane	4.510	97	195883	56.576	ug/L	98
31) Carbon tetrachloride	4.735	117	173757	53.973	ug/L	97
33) Benzene	5.008	78	368560	51.915	ug/L	100
34) Trichloroethene	5.831	95	207462	97.816	ug/L	97
35) Methylcyclohexane	6.050	83	150817	48.995	ug/L	98
37) 1,2-Dichloropropane	6.091	63	83777	50.990	ug/L	99
38) Bromodichloromethane	6.432	83	140543	53.060	ug/L	97
39) cis-1,3-Dichloropropene	6.953	75	151935	50.962	ug/L	100
40) 4-Methyl-2-pentanone	7.152	43	187599	107.539	ug/L	97
42) Toluene	7.313	91	430709	53.839	ug/L	99
44) trans-1,3-Dichloropropene	7.580	75	150026	49.765	ug/L	100
45) 1,1,2-Trichloroethane	7.767	97	102920	54.026	ug/L	98
46) Tetrachloroethene	7.905	164	94196	51.664	ug/L	95
48) 2-Hexanone	8.072	43	147026	101.653	ug/L	97
49) Dibromochloromethane	8.175	129	124217	54.621	ug/L	99
50) 1,2-Dibromoethane	8.281	107	108507	53.425	ug/L	98
51) Chlorobenzene	8.812	112	290768	51.686	ug/L	100
52) Ethylbenzene	8.947	91	480715	52.205	ug/L	99
53) m,p-Xylene	9.072	106	194368	53.301	ug/L	90
54) o-Xylene	9.477	106	190296	52.884	ug/L	97
55) Styrene	9.493	104	343625	55.202	ug/L	97
57) 1,1,2,2-Tetrachloroethane	10.178	83	148265	56.964	ug/L	99
59) Bromoform	9.664	173	102003	54.874	ug/L	99
60) Isopropylbenzene	9.866	105	521994	52.858	ug/L	99
61) 1,2,3-Trichloropropane	10.207	75	114629	53.674	ug/L	99
62) 1,3,5-Trimethylbenzene	10.477	105	419273	52.696	ug/L	100
63) 1,2,4-Trimethylbenzene	10.850	105	438079	52.868	ug/L	99
64) 1,3-Dichlorobenzene	11.117	146	272200	51.593	ug/L	99
65) 1,4-Dichlorobenzene	11.207	146	275074	50.192	ug/L	99
67) 1,2-Dichlorobenzene	11.580	146	275812	53.325	ug/L	98
68) 1,2-Dibromo-3-chloropr...	12.365	75	35941	54.847	ug/L	89
69) 1,3,5-Trichlorobenzene	12.583	180	203825	48.231	ug/L	99
70) 1,2,4-trichlorobenzene	13.197	180	190472	48.784	ug/L	98
71) Naphthalene	13.438	128	475409	49.929	ug/L	99
72) 1,2,3-Trichlorobenzene	13.680	180	195045	51.772	ug/L	99

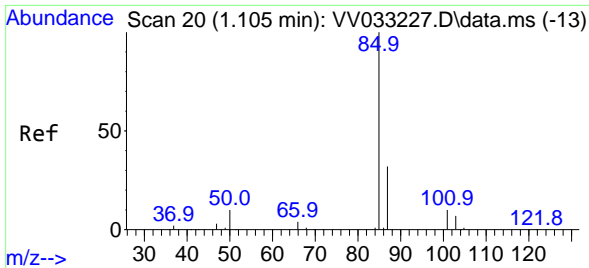
(#) = qualifier out of range (m) = manual integration (+) = signals summed

Data Path : Z:\voasrv\HPCHEM1\MSVOA\_V\Data\VV121123\  
 Data File : VV033249.D  
 Acq On : 12 Dec 2023 05:39  
 Operator : SY/MD  
 Sample : 05751-13MS  
 Misc : 5.0mL/MSVOA\_V/WATER  
 ALS Vial : 50 Sample Multiplier: 1

Instrument :  
 MSVOA\_V  
 ClientSampleId :

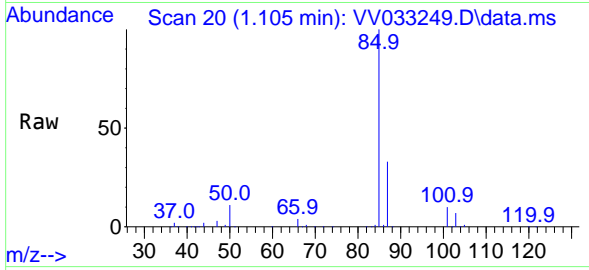
Quant Time: Dec 12 06:55:40 2023  
 Quant Method : Z:\voasrv\HPCHEM1\MSVOA\_V\Method\SFAMVLM120123WMA.M  
 Quant Title : VOC Analysis  
 QLast Update : Fri Dec 08 21:51:12 2023  
 Response via : Initial Calibration



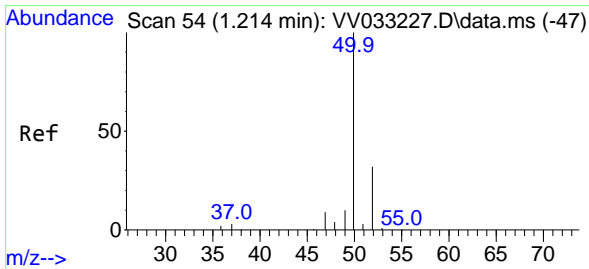
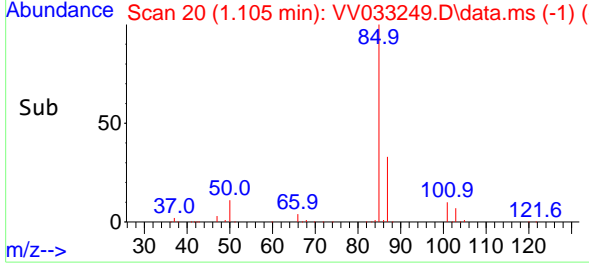
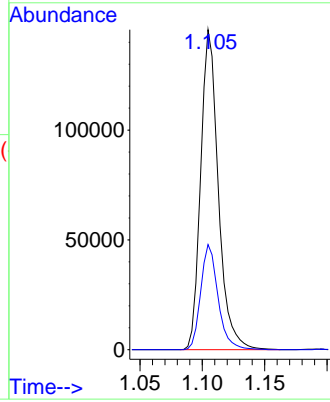


#2  
 Dichlorodifluoromethane  
 Concen: 47.862 ug/L  
 RT: 1.105 min Scan# 20  
 Delta R.T. -0.000 min  
 Lab File: VV033249.D  
 Acq: 12 Dec 2023 05:39

Instrument : MSVOA\_V  
 ClientSampleId :

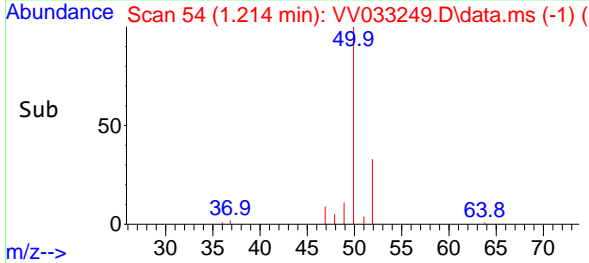
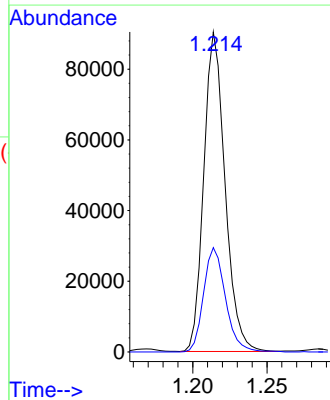
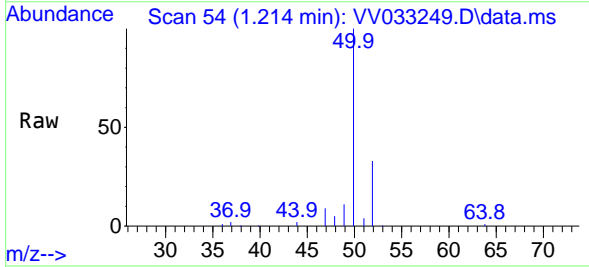


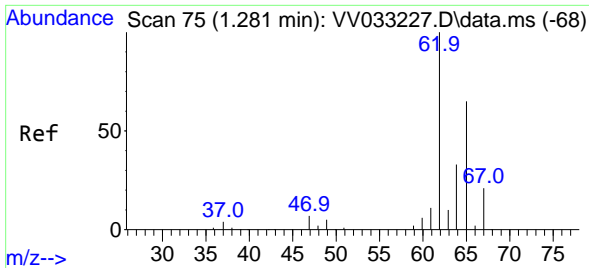
Tgt Ion: 85 Resp: 143079  
 Ion Ratio Lower Upper  
 85 100  
 87 32.2 26.0 39.0



#3  
 Chloromethane  
 Concen: 45.648 ug/L  
 RT: 1.214 min Scan# 54  
 Delta R.T. -0.000 min  
 Lab File: VV033249.D  
 Acq: 12 Dec 2023 05:39

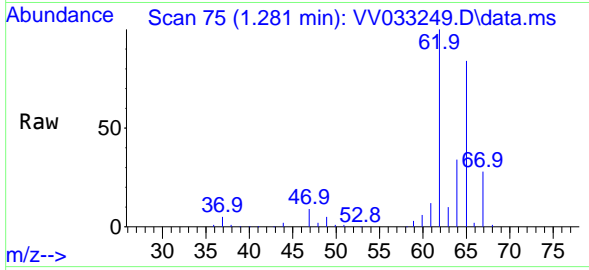
Tgt Ion: 50 Resp: 90002  
 Ion Ratio Lower Upper  
 50 100  
 52 32.6 22.8 42.4



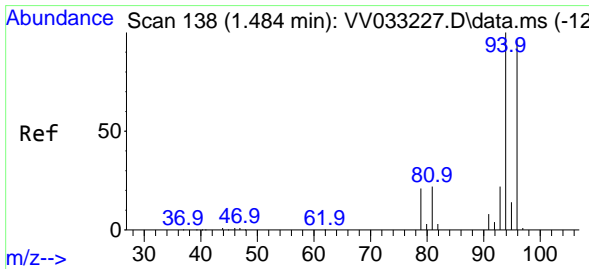
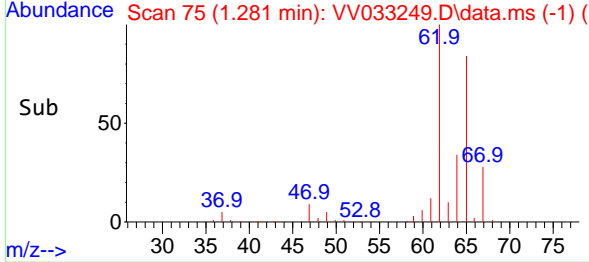
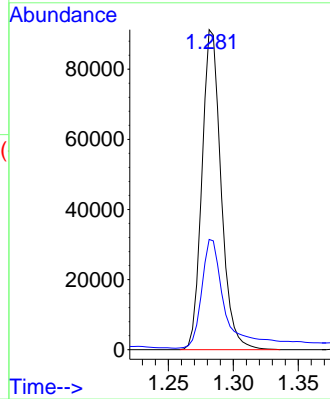


#5  
 Vinyl chloride  
 Concen: 49.602 ug/L  
 RT: 1.281 min Scan# 75  
 Delta R.T. -0.003 min  
 Lab File: VV033249.D  
 Acq: 12 Dec 2023 05:39

Instrument :  
 MSVOA\_V  
 ClientSampleId :

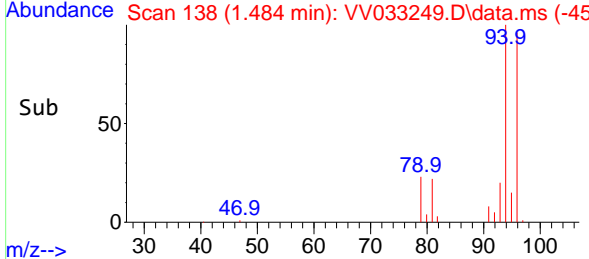
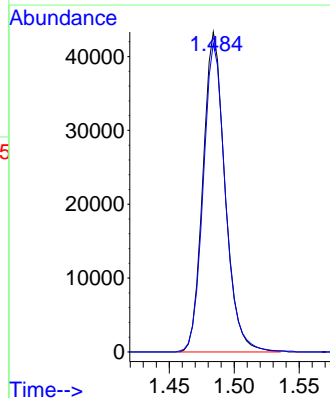
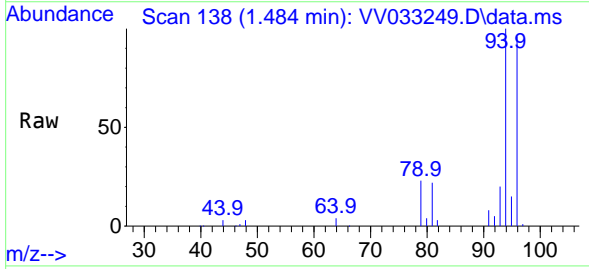


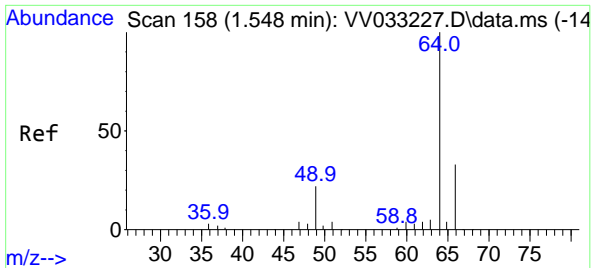
Tgt Ion: 62 Resp: 93793  
 Ion Ratio Lower Upper  
 62 100  
 64 34.5 24.2 45.0



#6  
 Bromomethane  
 Concen: 41.516 ug/L  
 RT: 1.484 min Scan# 138  
 Delta R.T. -0.000 min  
 Lab File: VV033249.D  
 Acq: 12 Dec 2023 05:39

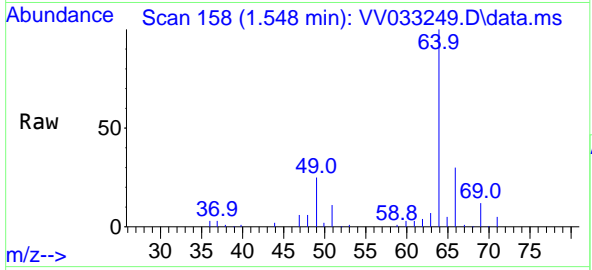
Tgt Ion: 94 Resp: 51225  
 Ion Ratio Lower Upper  
 94 100  
 96 96.5 67.1 124.7



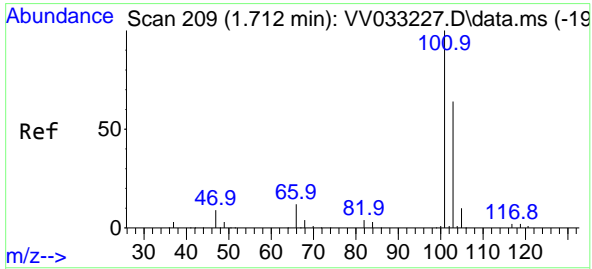
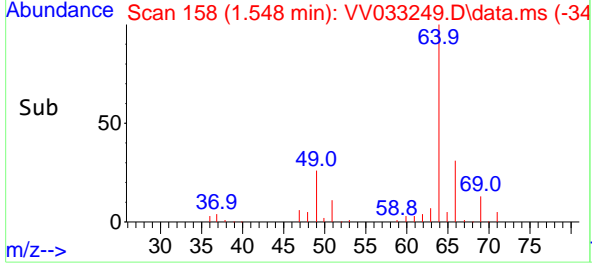
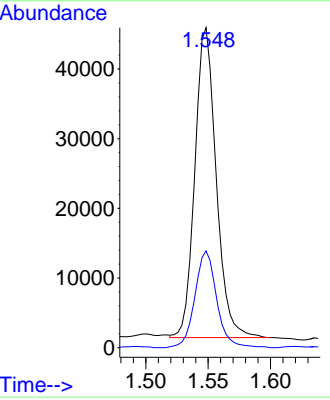


#8  
 Chloroethane  
 Concen: 52.603 ug/L  
 RT: 1.548 min Scan# 11  
 Delta R.T. -0.000 min  
 Lab File: VV033249.D  
 Acq: 12 Dec 2023 05:39

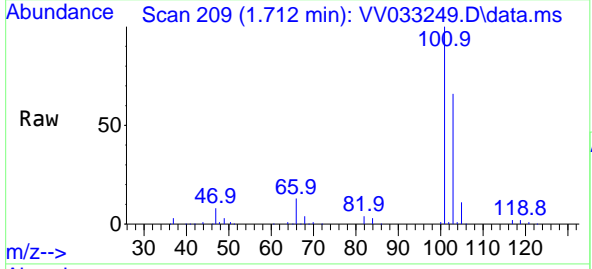
Instrument : MSVOA\_V  
 ClientSampleId :



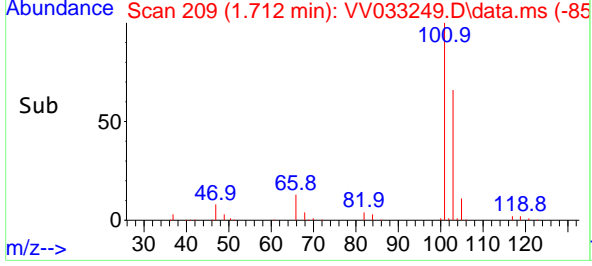
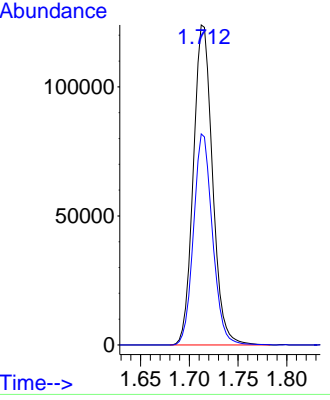
Tgt Ion: 64 Resp: 52957  
 Ion Ratio Lower Upper  
 64 100  
 66 30.3 22.3 41.5

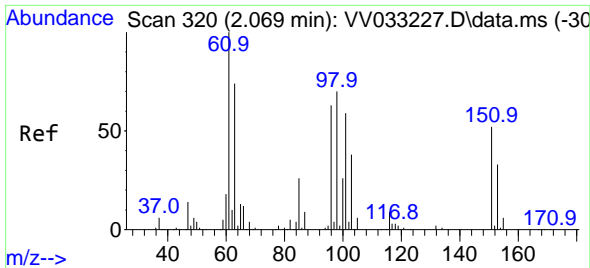


#9  
 Trichlorofluoromethane  
 Concen: 54.437 ug/L  
 RT: 1.712 min Scan# 209  
 Delta R.T. -0.000 min  
 Lab File: VV033249.D  
 Acq: 12 Dec 2023 05:39



Tgt Ion: 101 Resp: 169854  
 Ion Ratio Lower Upper  
 101 100  
 103 65.2 51.3 76.9

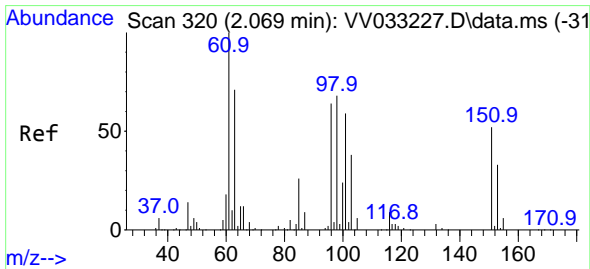
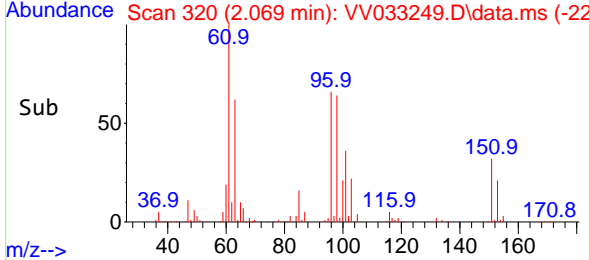
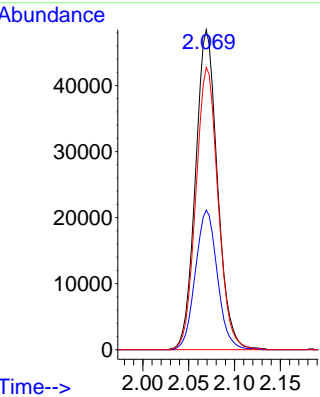
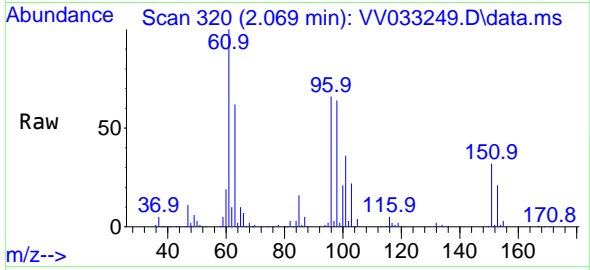




#10  
 1,1,2-Trichloro-1,2,2-trifluoroethane  
 Concen: 55.256 ug/L  
 RT: 2.069 min Scan# 31  
 Delta R.T. -0.000 min  
 Lab File: VV033249.D  
 Acq: 12 Dec 2023 05:39

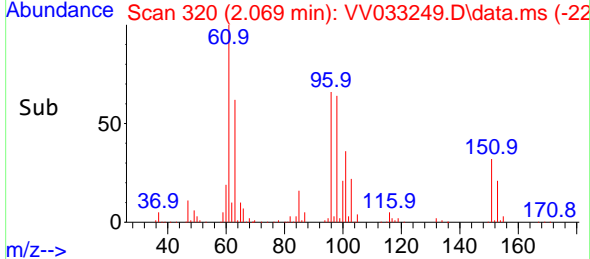
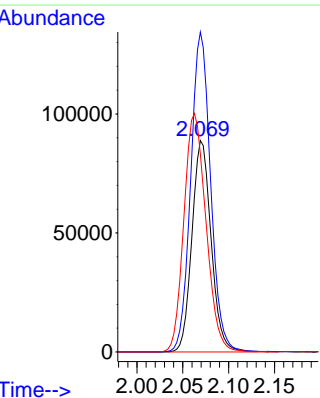
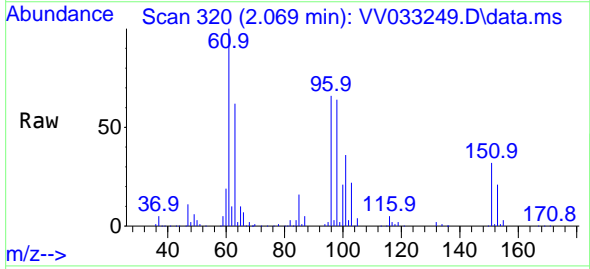
Instrument : MSVOA\_V  
 ClientSampleId :

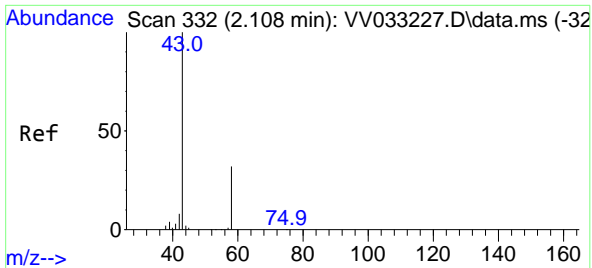
Tgt Ion	Resp	Lower	Upper
101	80963		
101	100		
85	43.6	36.0	54.0
151	89.0	69.1	103.7



#12  
 1,1-Dichloroethene  
 Concen: 94.432 ug/L  
 RT: 2.069 min Scan# 320  
 Delta R.T. -0.000 min  
 Lab File: VV033249.D  
 Acq: 12 Dec 2023 05:39

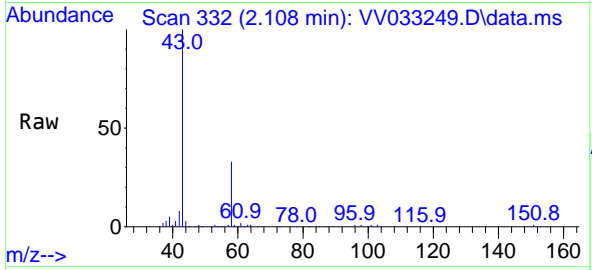
Tgt Ion	Resp	Lower	Upper
96	129478		
96	100		
61	151.4	109.1	202.7
63	93.7	85.3	158.3



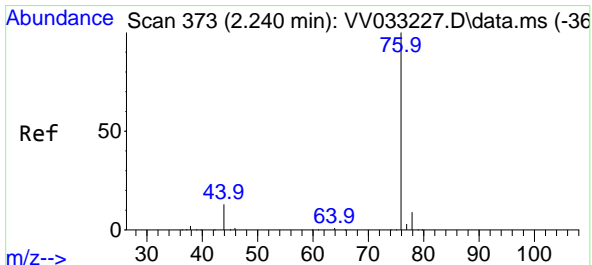
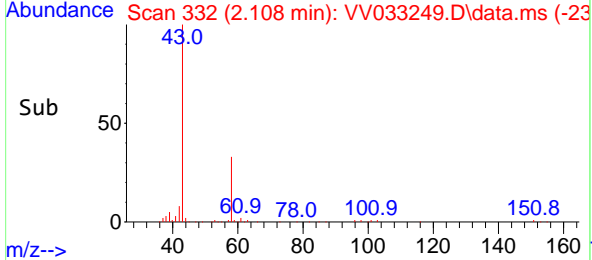
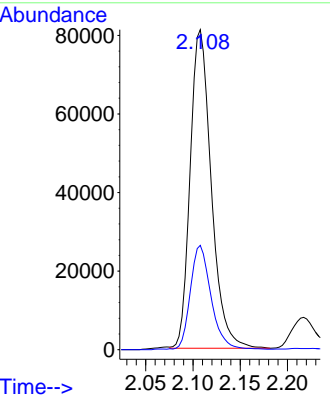


#13  
 Acetone  
 Concen: 162.223 ug/L  
 RT: 2.108 min Scan# 311  
 Delta R.T. -0.000 min  
 Lab File: VV033249.D  
 Acq: 12 Dec 2023 05:39

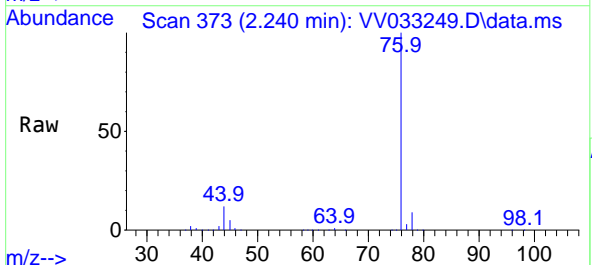
Instrument : MSVOA\_V  
 ClientSampleId :



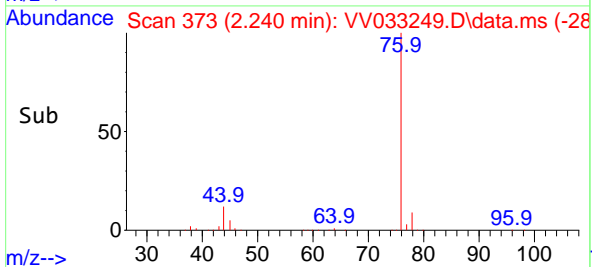
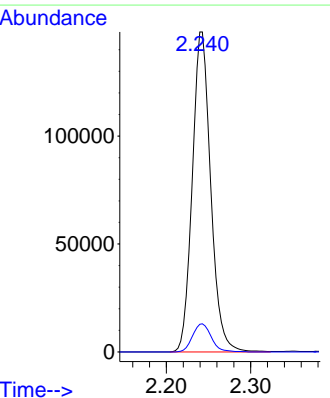
Tgt Ion: 43 Resp: 125757  
 Ion Ratio Lower Upper  
 43 100  
 58 32.0 0.0 62.8



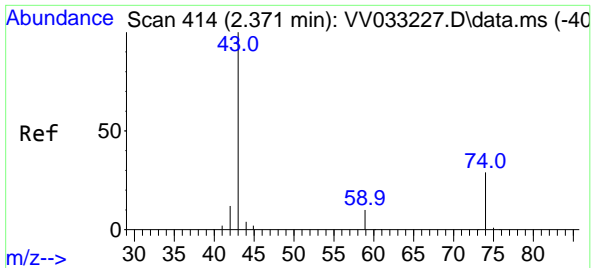
#14  
 Carbon disulfide  
 Concen: 45.922 ug/L  
 RT: 2.240 min Scan# 373  
 Delta R.T. -0.003 min  
 Lab File: VV033249.D  
 Acq: 12 Dec 2023 05:39



Tgt Ion: 76 Resp: 225902  
 Ion Ratio Lower Upper  
 76 100  
 78 8.6 7.4 11.0

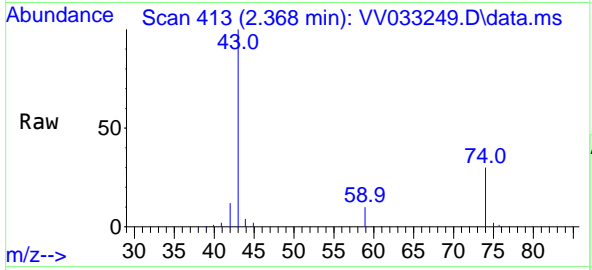




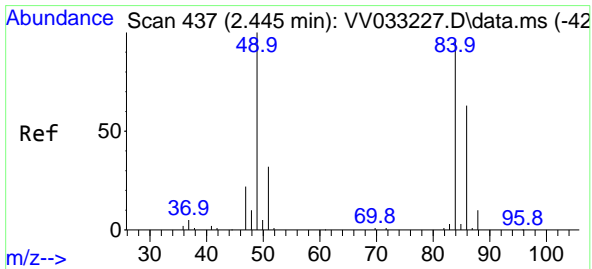
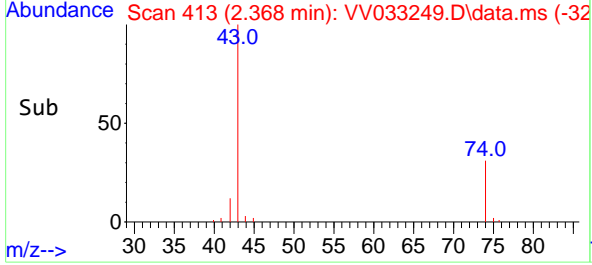
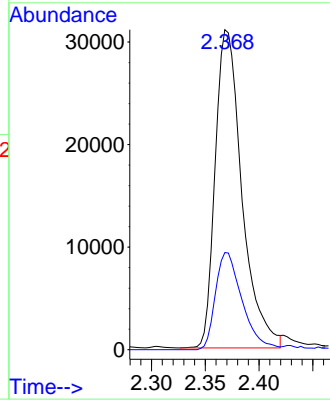


#15  
 Methyl Acetate  
 Concen: 41.541 ug/L  
 RT: 2.368 min Scan# 413  
 Delta R.T. -0.000 min  
 Lab File: VV033249.D  
 Acq: 12 Dec 2023 05:39

Instrument : MSVOA\_V  
 ClientSampleId :

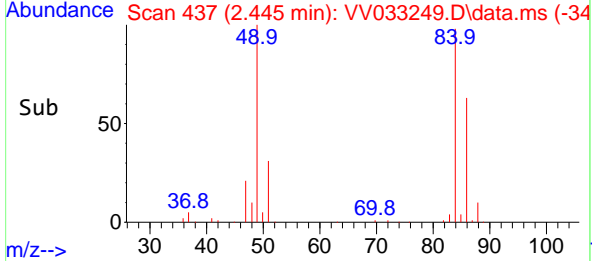
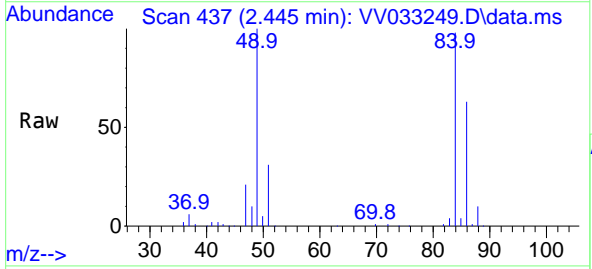
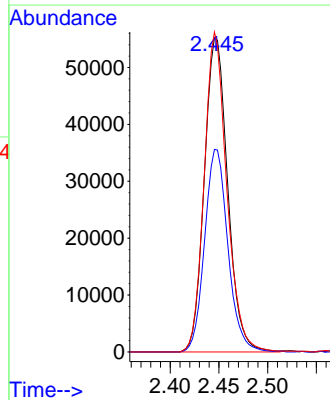


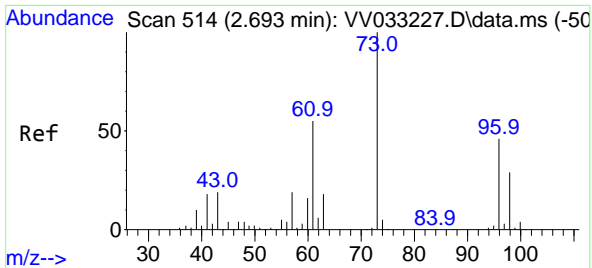
Tgt Ion: 43 Resp: 53673  
 Ion Ratio Lower Upper  
 43 100  
 74 30.3 22.6 33.8



#16  
 Methylene chloride  
 Concen: 50.646 ug/L  
 RT: 2.445 min Scan# 437  
 Delta R.T. -0.000 min  
 Lab File: VV033249.D  
 Acq: 12 Dec 2023 05:39

Tgt Ion: 84 Resp: 91952  
 Ion Ratio Lower Upper  
 84 100  
 86 64.5 45.9 85.3  
 49 101.8 75.5 140.1



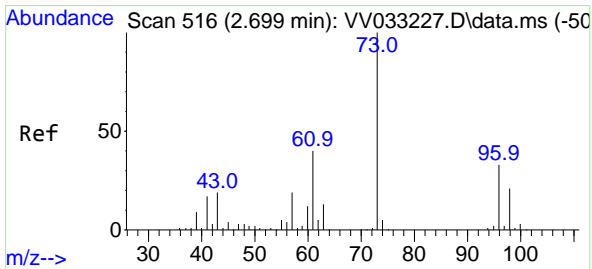
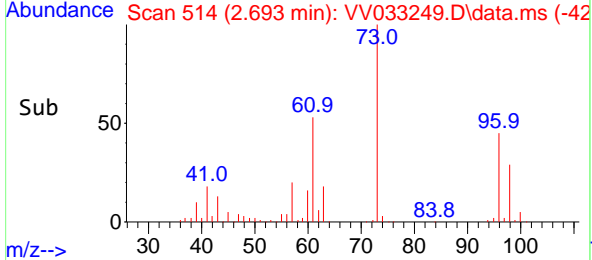
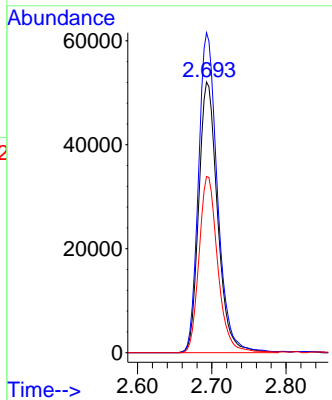
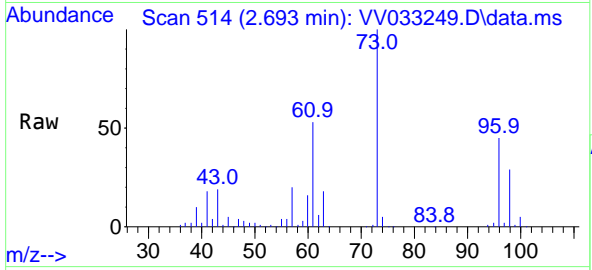


#17  
 trans-1,2-Dichloroethene  
 Concen: 50.919 ug/L  
 RT: 2.693 min Scan# 511  
 Delta R.T. -0.000 min  
 Lab File: VV033249.D  
 Acq: 12 Dec 2023 05:39

Instrument : MSVOA\_V  
 ClientSampleId :

Tgt Ion: 96 Resp: 91666

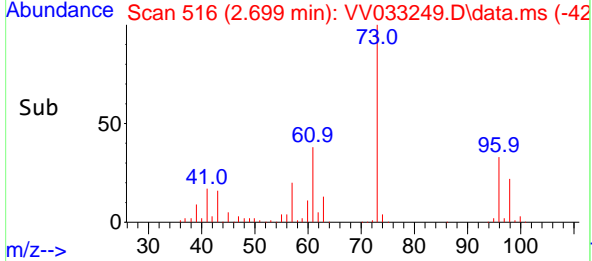
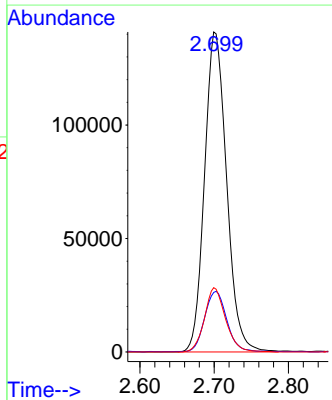
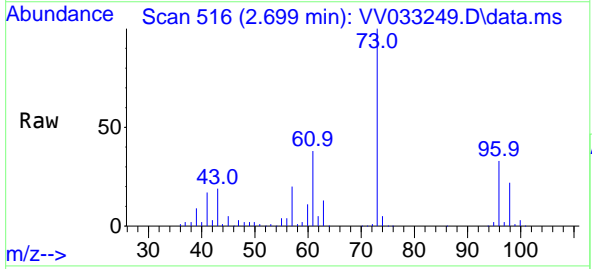
Ion	Ratio	Lower	Upper
96	100		
61	118.2	86.5	160.6
98	65.1	45.1	83.7

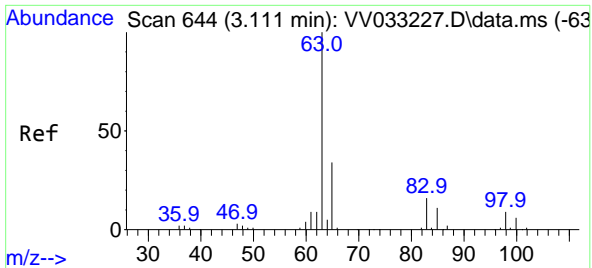


#18  
 Methyl tert-butyl Ether  
 Concen: 53.158 ug/L  
 RT: 2.699 min Scan# 516  
 Delta R.T. -0.000 min  
 Lab File: VV033249.D  
 Acq: 12 Dec 2023 05:39

Tgt Ion: 73 Resp: 290714

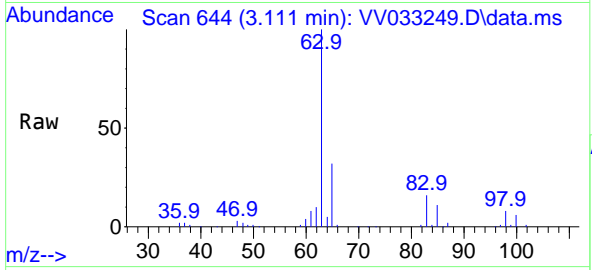
Ion	Ratio	Lower	Upper
73	100		
43	18.7	15.4	23.2
57	19.2	16.1	24.1





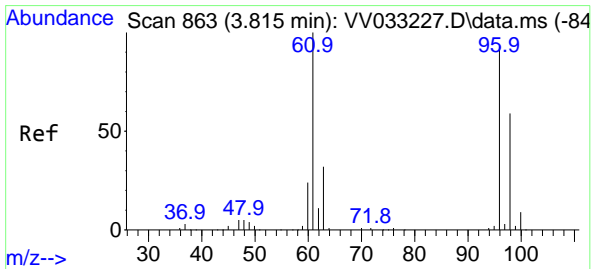
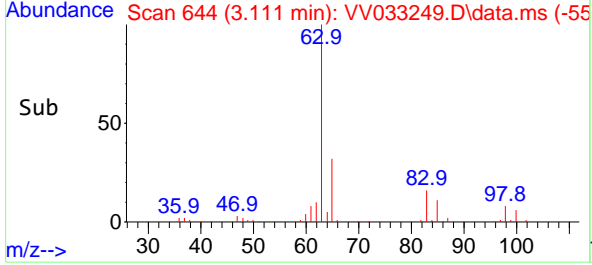
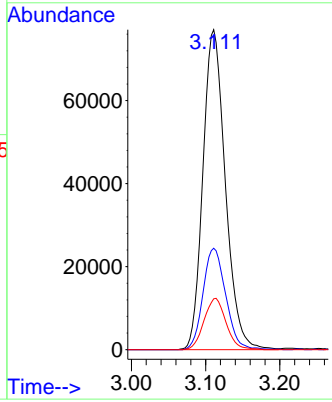
#19  
 1,1-Dichloroethane  
 Concen: 54.275 ug/L  
 RT: 3.111 min Scan# 64  
 Delta R.T. 0.003 min  
 Lab File: VV033249.D  
 Acq: 12 Dec 2023 05:39

Instrument : MSVOA\_V  
 ClientSampleId :

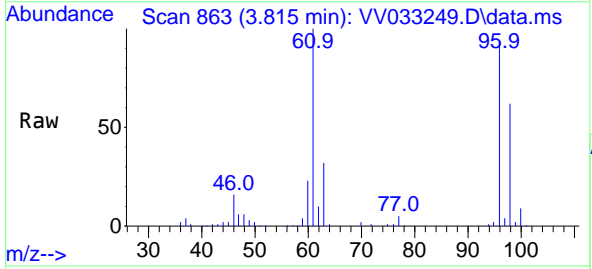


Tgt Ion: 63 Resp: 161719

Ion	Ratio	Lower	Upper
63	100		
65	31.7	23.0	42.6
83	15.9	11.4	21.2

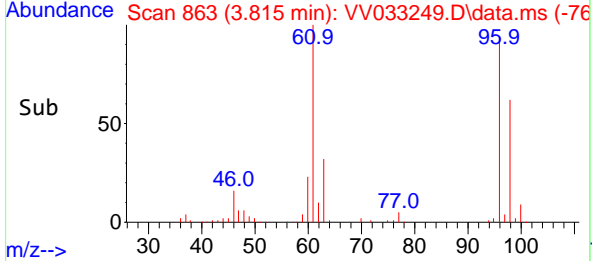
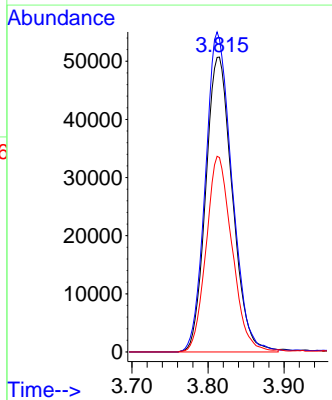


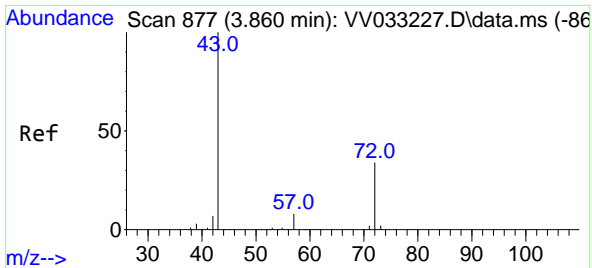
#20  
 cis-1,2-Dichloroethene  
 Concen: 64.572 ug/L  
 RT: 3.815 min Scan# 863  
 Delta R.T. 0.003 min  
 Lab File: VV033249.D  
 Acq: 12 Dec 2023 05:39



Tgt Ion: 96 Resp: 123345

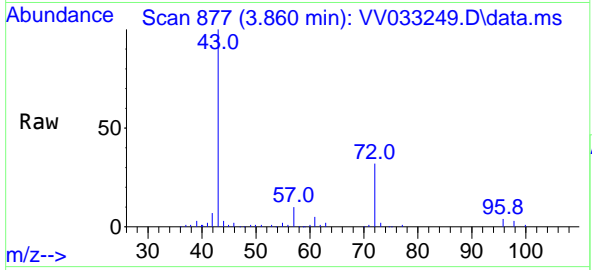
Ion	Ratio	Lower	Upper
96	100		
61	106.0	79.1	146.9
98	65.9	45.1	83.7



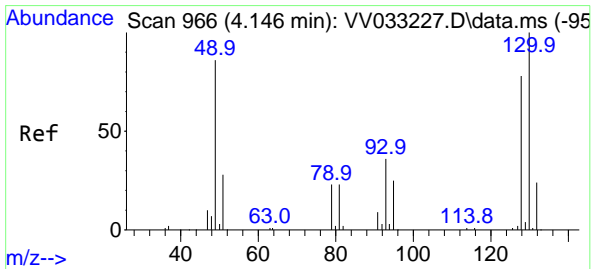
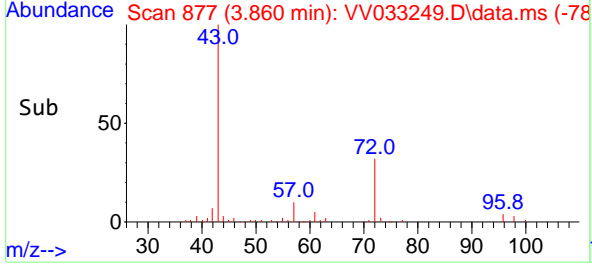
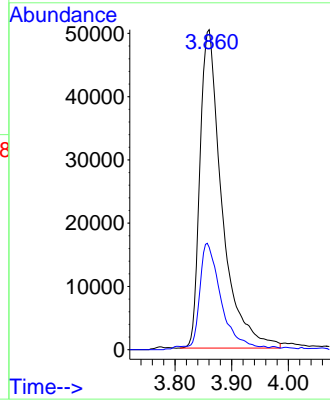


#22  
 2-Butanone  
 Concen: 137.607 ug/L  
 RT: 3.860 min Scan# 81  
 Delta R.T. 0.003 min  
 Lab File: VV033249.D  
 Acq: 12 Dec 2023 05:39

Instrument : MSVOA\_V  
 ClientSampleId :

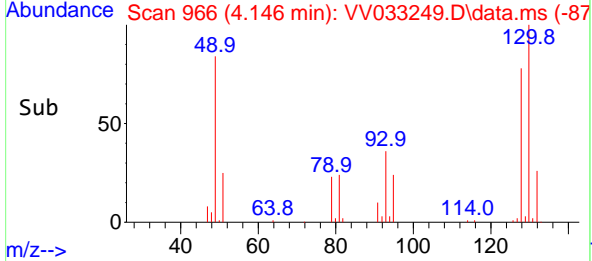
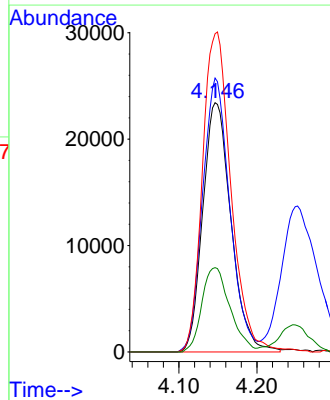
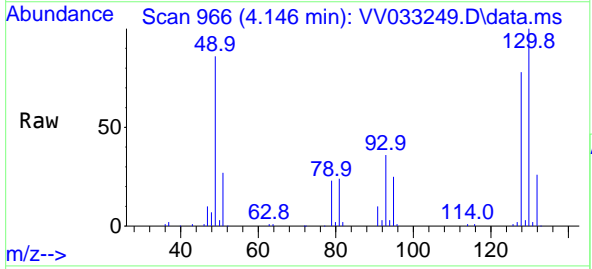


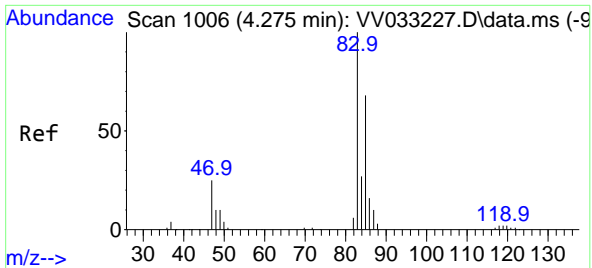
Tgt Ion: 43 Resp: 135754  
 Ion Ratio Lower Upper  
 43 100  
 72 32.0 14.6 43.8



#23  
 Bromochloromethane  
 Concen: 53.878 ug/L  
 RT: 4.146 min Scan# 966  
 Delta R.T. 0.003 min  
 Lab File: VV033249.D  
 Acq: 12 Dec 2023 05:39

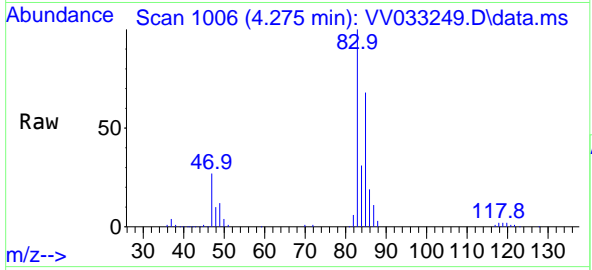
Tgt Ion:128 Resp: 59095  
 Ion Ratio Lower Upper  
 128 100  
 49 109.8 81.7 151.7  
 130 127.6 90.1 167.3  
 51 33.8 30.5 45.7



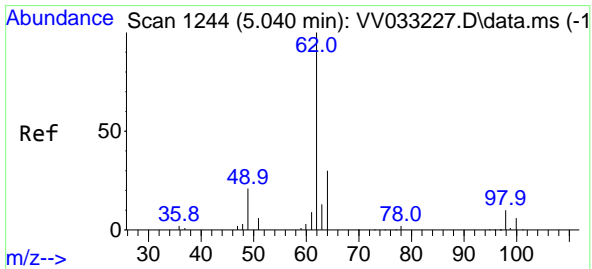
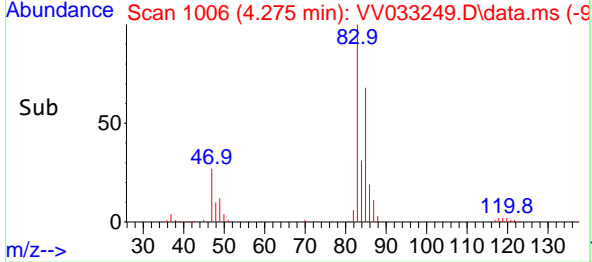
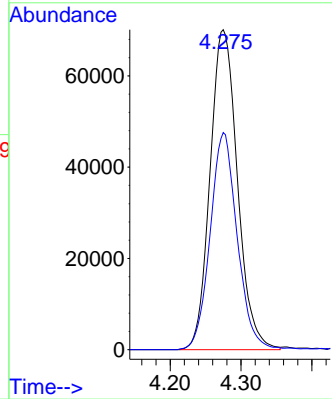


#25  
 Chloroform  
 Concen: 54.993 ug/L  
 RT: 4.275 min Scan# 1006  
 Delta R.T. 0.003 min  
 Lab File: VV033249.D  
 Acq: 12 Dec 2023 05:39

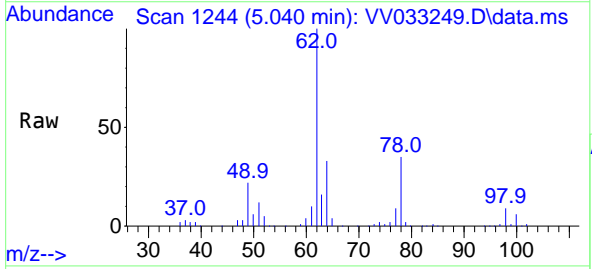
Instrument : MSVOA\_V  
 ClientSampleId :



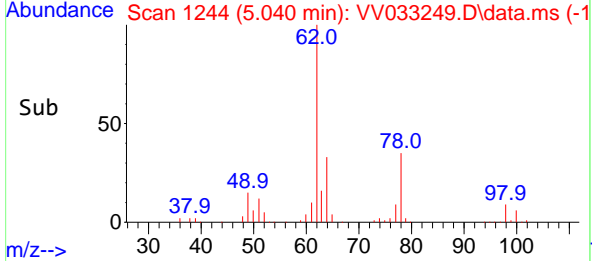
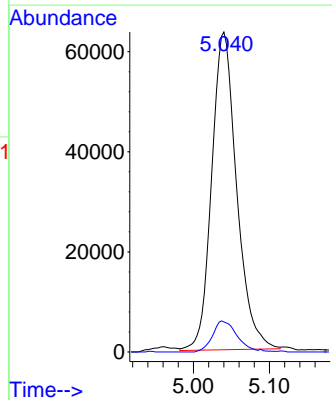
Tgt Ion: 83 Resp: 188449  
 Ion Ratio Lower Upper  
 83 100  
 85 67.8 43.5 80.7

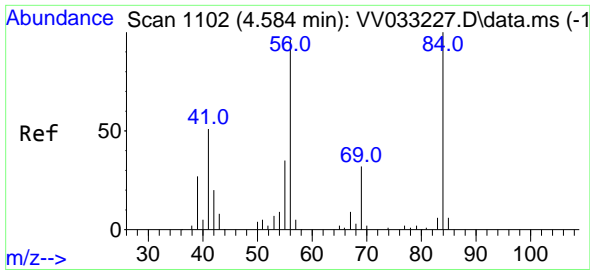


#27  
 1,2-Dichloroethane  
 Concen: 53.567 ug/L  
 RT: 5.040 min Scan# 1244  
 Delta R.T. 0.003 min  
 Lab File: VV033249.D  
 Acq: 12 Dec 2023 05:39



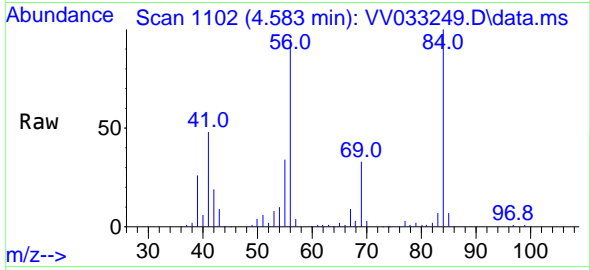
Tgt Ion: 62 Resp: 145053  
 Ion Ratio Lower Upper  
 62 100  
 98 9.4 7.8 11.8



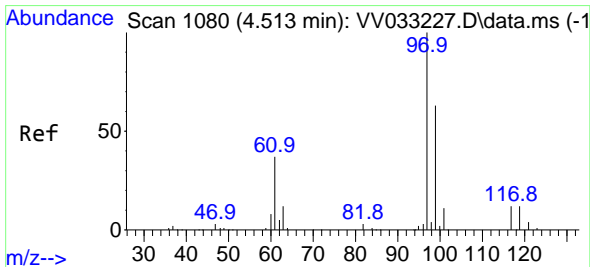
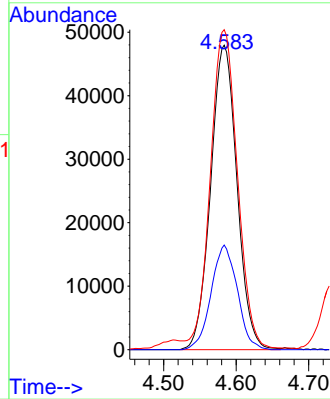
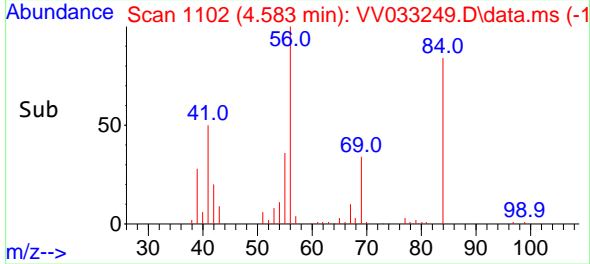


#29  
 Cyclohexane  
 Concen: 46.830 ug/L  
 RT: 4.583 min Scan# 1102  
 Delta R.T. -0.000 min  
 Lab File: VV033249.D  
 Acq: 12 Dec 2023 05:39

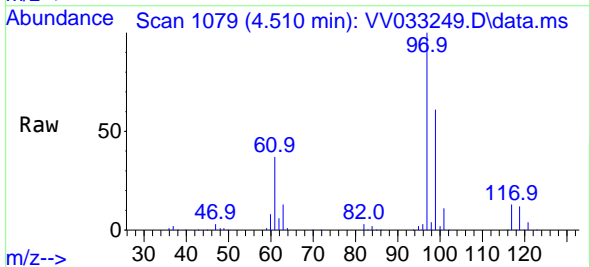
Instrument :  
 MSVOA\_V  
 ClientSampleId :



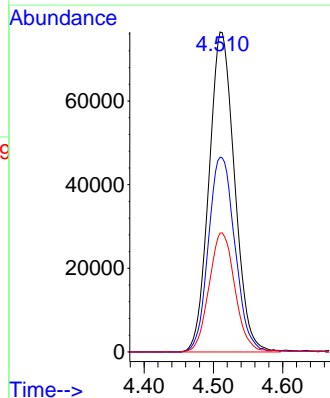
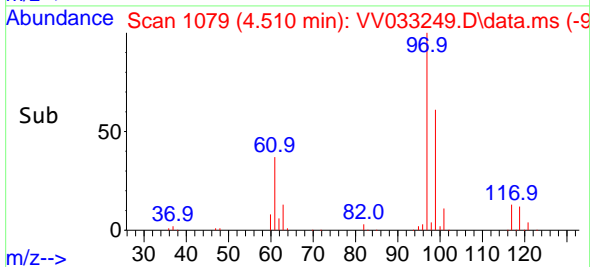
Tgt Ion: 56 Resp: 121177  
 Ion Ratio Lower Upper  
 56 100  
 69 34.1 26.9 40.3  
 84 106.6 80.6 121.0

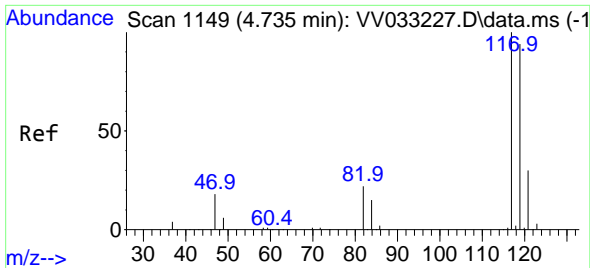


#30  
 1,1,1-Trichloroethane  
 Concen: 56.576 ug/L  
 RT: 4.510 min Scan# 1079  
 Delta R.T. -0.000 min  
 Lab File: VV033249.D  
 Acq: 12 Dec 2023 05:39



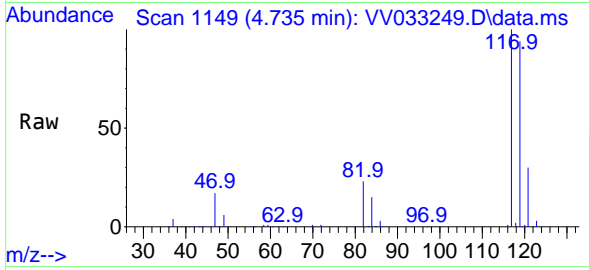
Tgt Ion: 97 Resp: 195883  
 Ion Ratio Lower Upper  
 97 100  
 99 63.2 51.3 76.9  
 61 37.6 31.8 47.8



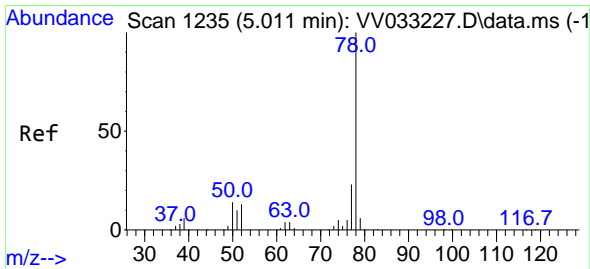
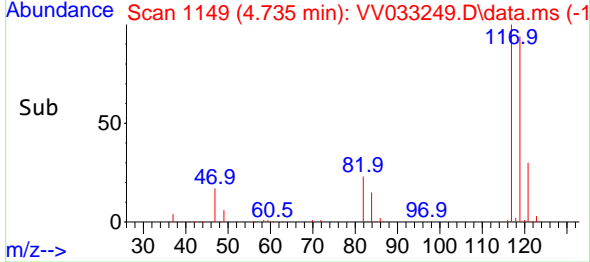
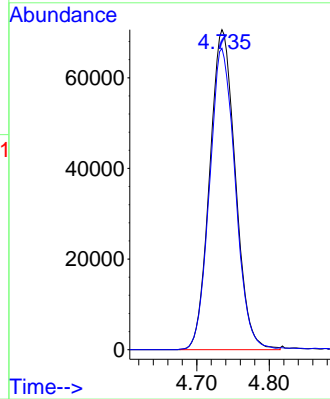


#31  
 Carbon tetrachloride  
 Concen: 53.973 ug/L  
 RT: 4.735 min Scan# 1149  
 Delta R.T. -0.000 min  
 Lab File: VV033249.D  
 Acq: 12 Dec 2023 05:39

Instrument : MSVOA\_V  
 ClientSampleId :

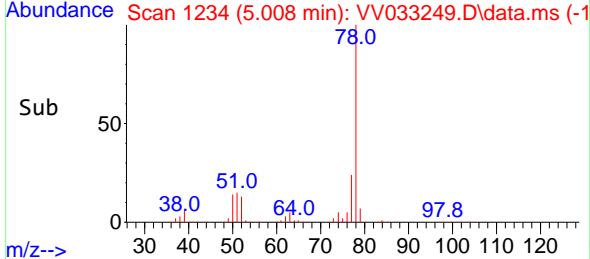
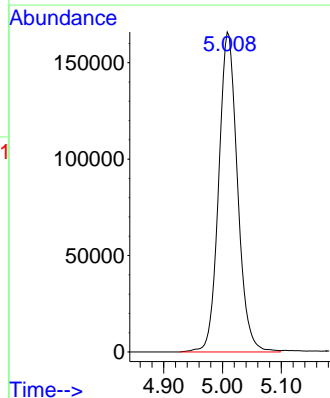
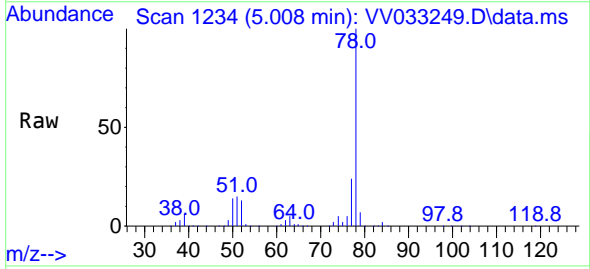


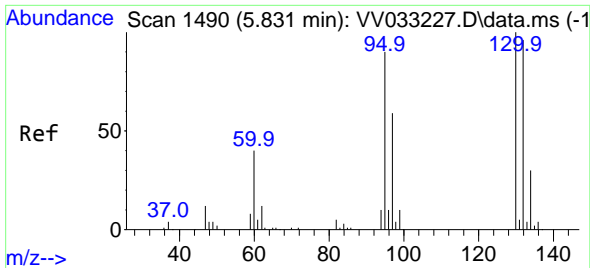
Tgt Ion: 117 Resp: 173757  
 Ion Ratio Lower Upper  
 117 100  
 119 94.2 77.5 116.3



#33  
 Benzene  
 Concen: 51.915 ug/L  
 RT: 5.008 min Scan# 1234  
 Delta R.T. 0.003 min  
 Lab File: VV033249.D  
 Acq: 12 Dec 2023 05:39

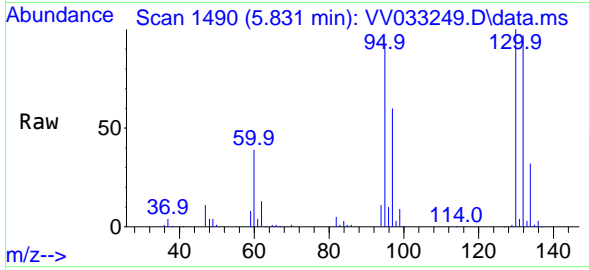
Tgt Ion: 78 Resp: 368560



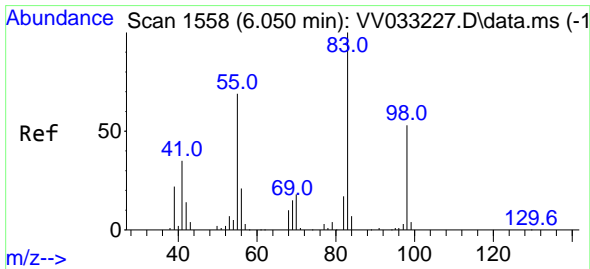
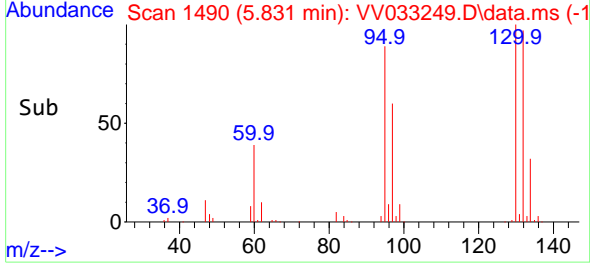
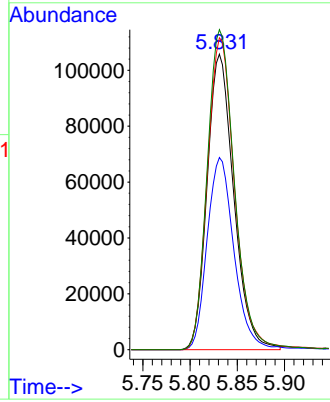


#34  
 Trichloroethene  
 Concen: 97.816 ug/L  
 RT: 5.831 min Scan# 1490  
 Delta R.T. -0.000 min  
 Lab File: VV033249.D  
 Acq: 12 Dec 2023 05:39

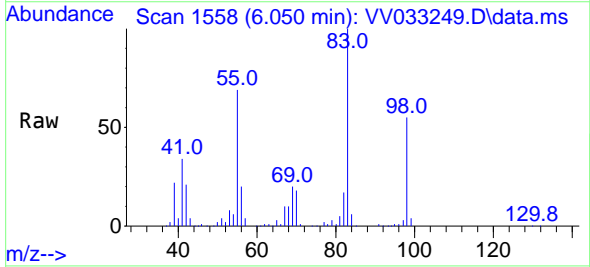
Instrument : MSVOA\_V  
 ClientSampleId :



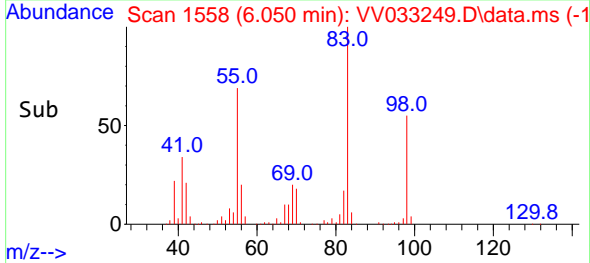
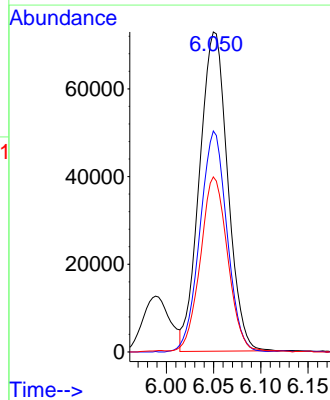
Tgt Ion: 95 Resp: 207462  
 Ion Ratio Lower Upper  
 95 100  
 97 65.0 45.8 85.0  
 132 105.5 77.4 143.8  
 130 108.3 76.9 142.7



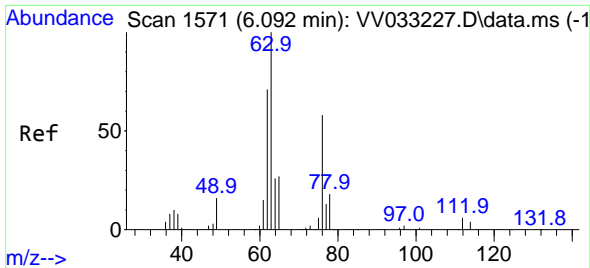
#35  
 Methylcyclohexane  
 Concen: 48.995 ug/L  
 RT: 6.050 min Scan# 1558  
 Delta R.T. -0.000 min  
 Lab File: VV033249.D  
 Acq: 12 Dec 2023 05:39



Tgt Ion: 83 Resp: 150817  
 Ion Ratio Lower Upper  
 83 100  
 55 66.6 54.8 82.2  
 98 52.7 41.4 62.0

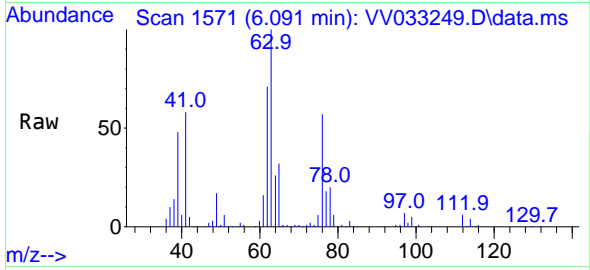




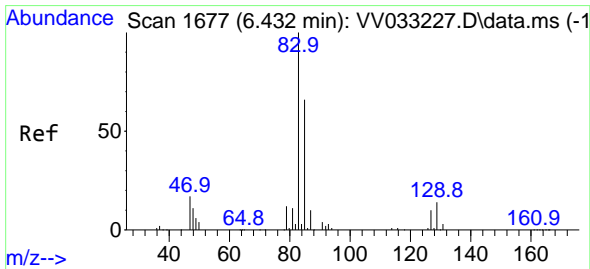
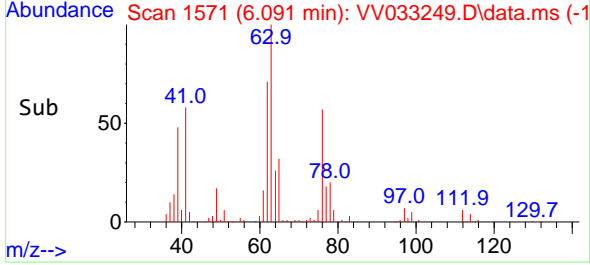
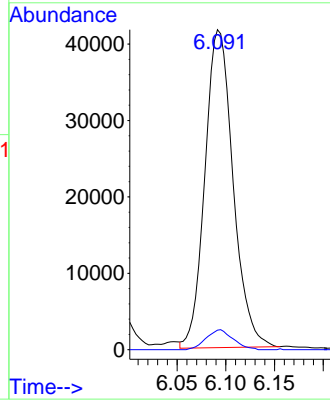


#37  
 1,2-Dichloropropane  
 Concen: 50.990 ug/L  
 RT: 6.091 min Scan# 11  
 Delta R.T. -0.000 min  
 Lab File: VV033249.D  
 Acq: 12 Dec 2023 05:39

Instrument :  
 MSVOA\_V  
 ClientSampleId :

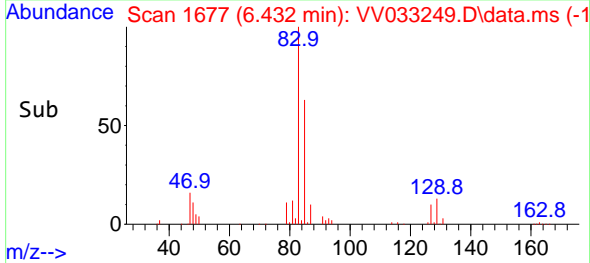
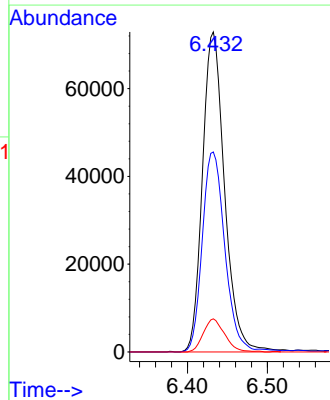
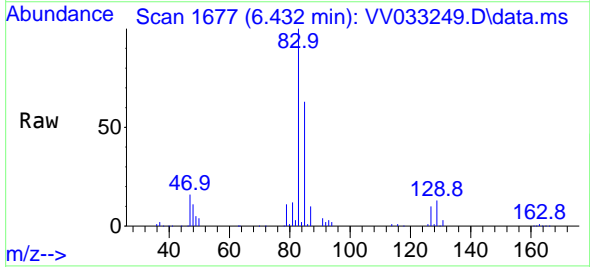


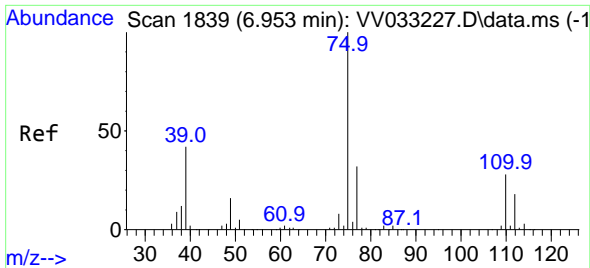
Tgt Ion: 63 Resp: 83777  
 Ion Ratio Lower Upper  
 63 100  
 112 6.0 4.6 6.8



#38  
 Bromodichloromethane  
 Concen: 53.060 ug/L  
 RT: 6.432 min Scan# 1677  
 Delta R.T. 0.003 min  
 Lab File: VV033249.D  
 Acq: 12 Dec 2023 05:39

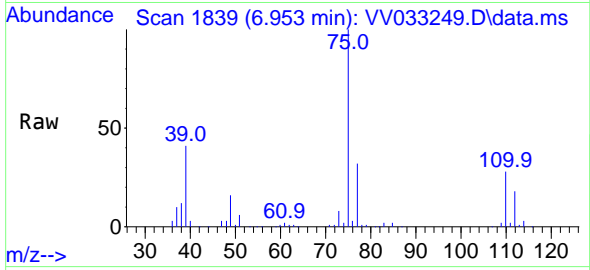
Tgt Ion: 83 Resp: 140543  
 Ion Ratio Lower Upper  
 83 100  
 85 62.5 45.6 84.6  
 127 10.4 7.4 11.2



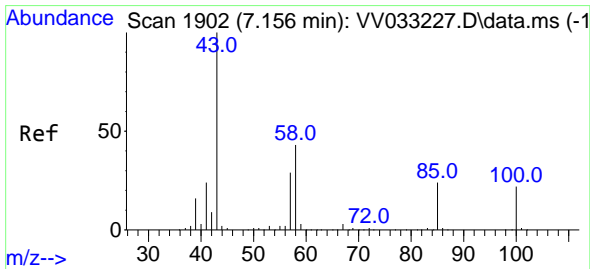
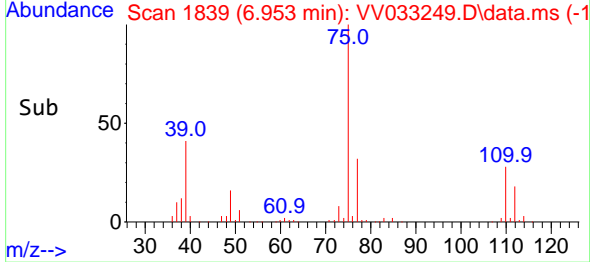
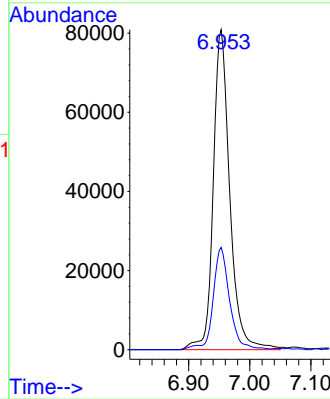


#39  
 cis-1,3-Dichloropropene  
 Concen: 50.962 ug/L  
 RT: 6.953 min Scan# 1839  
 Delta R.T. 0.003 min  
 Lab File: VV033249.D  
 Acq: 12 Dec 2023 05:39

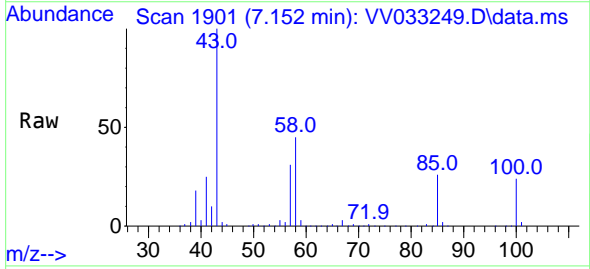
Instrument : MSVOA\_V  
 ClientSampleId :



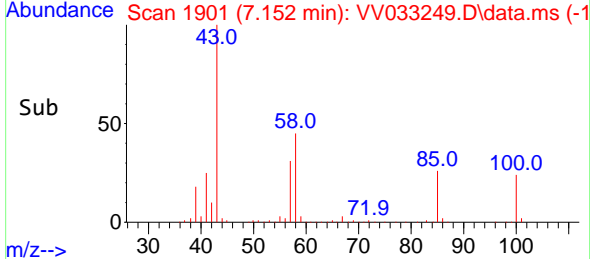
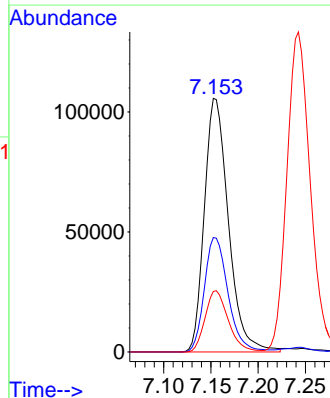
Tgt Ion: 75 Resp: 151935  
 Ion Ratio Lower Upper  
 75 100  
 77 31.9 22.4 41.6

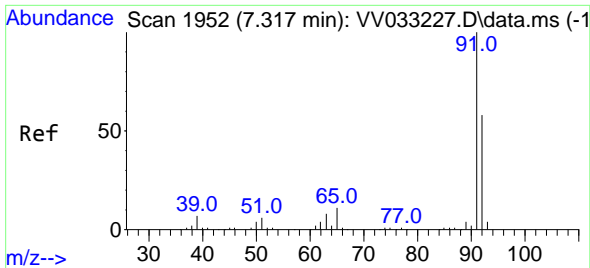


#40  
 4-Methyl-2-pentanone  
 Concen: 107.539 ug/L  
 RT: 7.152 min Scan# 1901  
 Delta R.T. -0.000 min  
 Lab File: VV033249.D  
 Acq: 12 Dec 2023 05:39



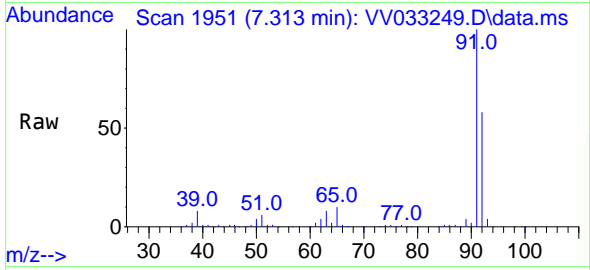
Tgt Ion: 43 Resp: 187599  
 Ion Ratio Lower Upper  
 43 100  
 58 44.4 34.5 51.7  
 100 23.3 17.0 25.6



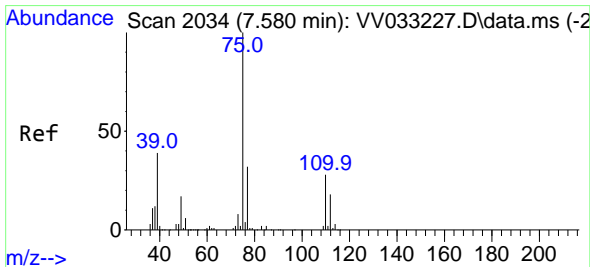
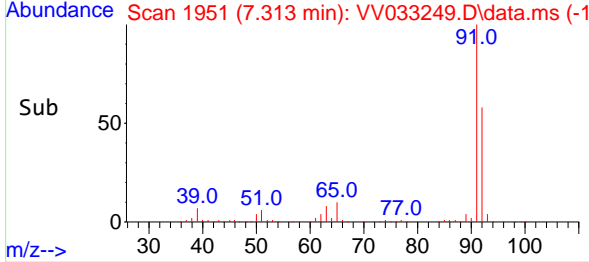
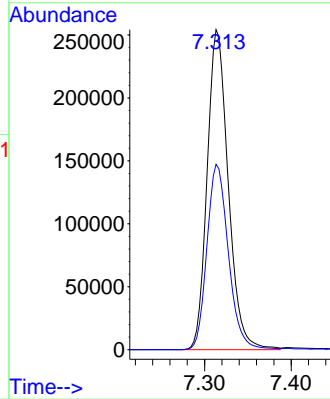


#42  
 Toluene  
 Concen: 53.839 ug/L  
 RT: 7.313 min Scan# 1952  
 Delta R.T. -0.000 min  
 Lab File: VV033249.D  
 Acq: 12 Dec 2023 05:39

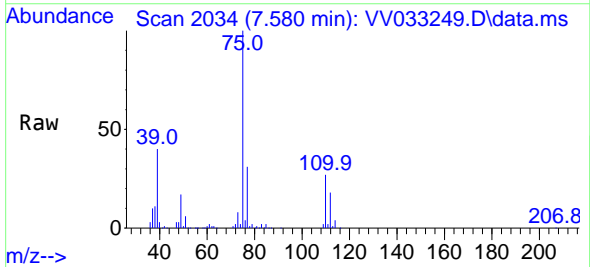
Instrument : MSVOA\_V  
 ClientSampleId :



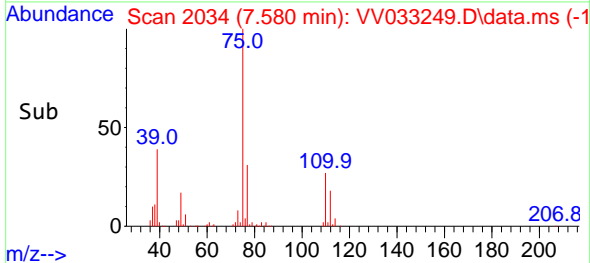
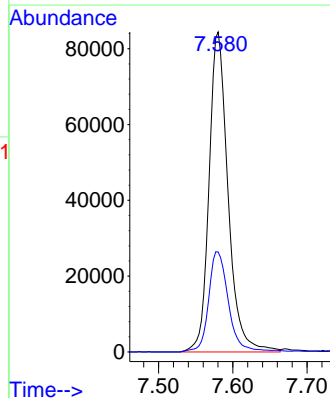
Tgt Ion: 91 Resp: 430709  
 Ion Ratio Lower Upper  
 91 100  
 92 57.9 41.3 76.7

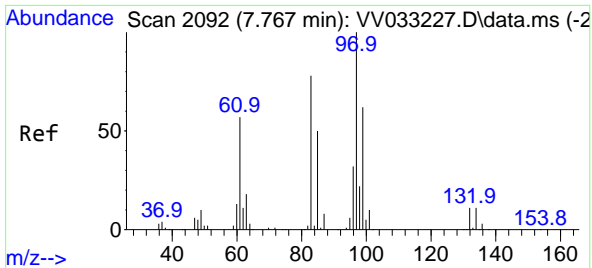


#44  
 trans-1,3-Dichloropropene  
 Concen: 49.765 ug/L  
 RT: 7.580 min Scan# 2034  
 Delta R.T. -0.000 min  
 Lab File: VV033249.D  
 Acq: 12 Dec 2023 05:39



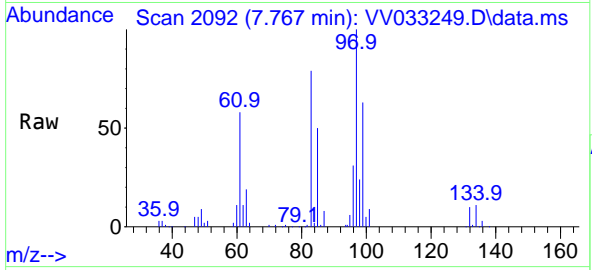
Tgt Ion: 75 Resp: 150026  
 Ion Ratio Lower Upper  
 75 100  
 77 31.3 22.0 41.0





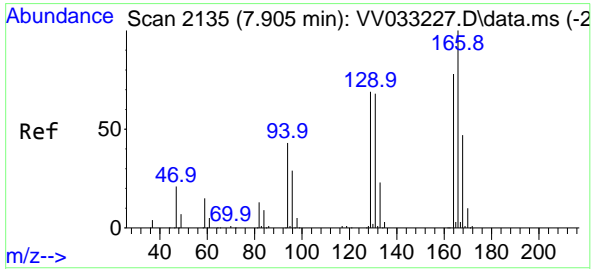
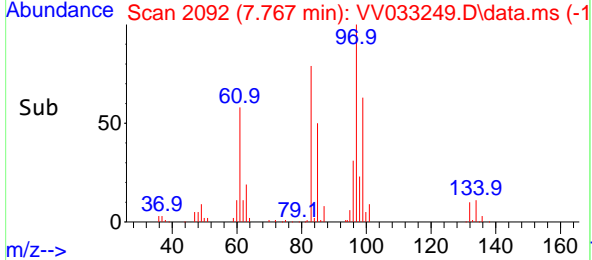
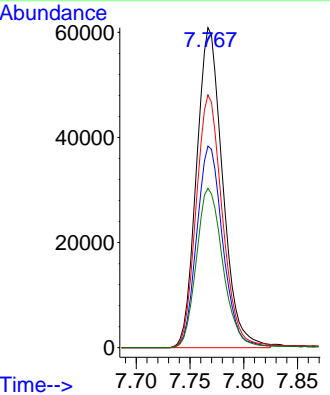
#45  
 1,1,2-Trichloroethane  
 Concen: 54.026 ug/L  
 RT: 7.767 min Scan# 2092  
 Delta R.T. -0.000 min  
 Lab File: VV033249.D  
 Acq: 12 Dec 2023 05:39

Instrument : MSVOA\_V  
 ClientSampleId :

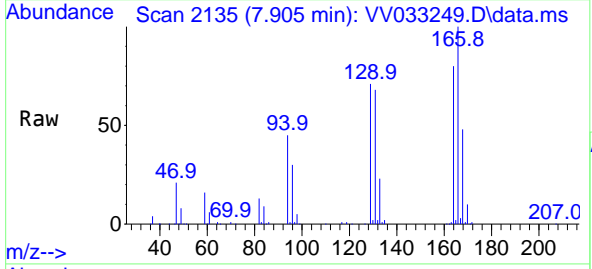


Tgt Ion: 97 Resp: 102920

Ion	Ratio	Lower	Upper
97	100		
99	63.0	43.2	80.2
83	79.0	55.8	103.6
85	49.8	37.1	68.9

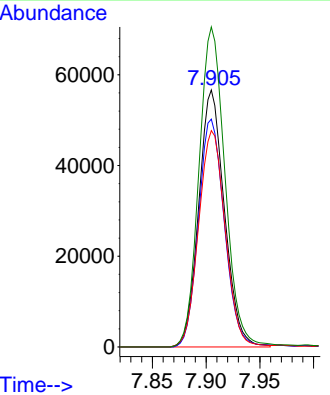


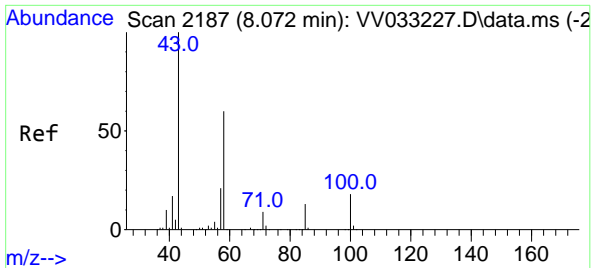
#46  
 Tetrachloroethene  
 Concen: 51.664 ug/L  
 RT: 7.905 min Scan# 2135  
 Delta R.T. -0.000 min  
 Lab File: VV033249.D  
 Acq: 12 Dec 2023 05:39



Tgt Ion: 164 Resp: 94196

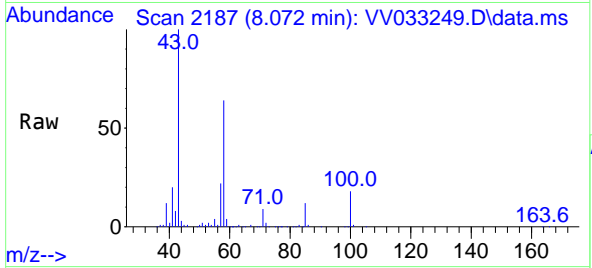
Ion	Ratio	Lower	Upper
164	100		
129	88.7	65.6	121.8
131	84.2	64.7	120.1
166	124.6	89.4	166.0





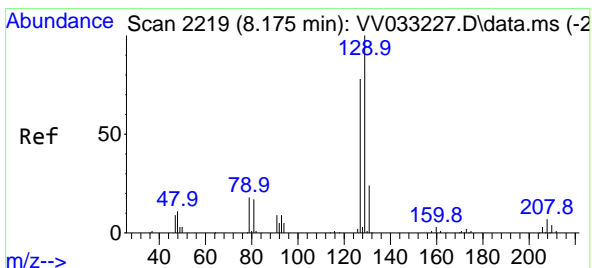
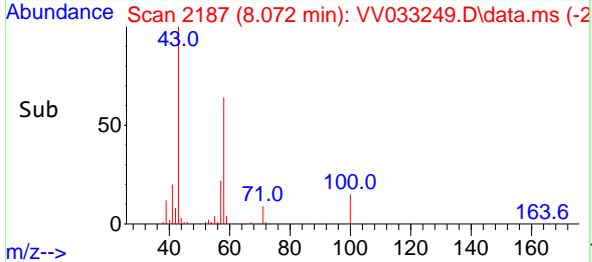
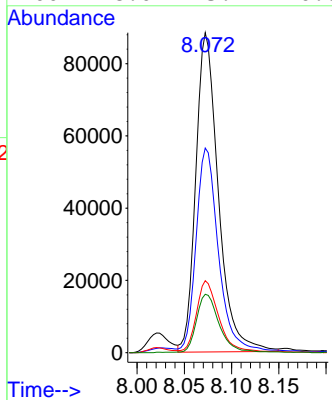
#48  
 2-Hexanone  
 Concen: 101.653 ug/L  
 RT: 8.072 min Scan# 2187  
 Delta R.T. -0.000 min  
 Lab File: VV033249.D  
 Acq: 12 Dec 2023 05:39

Instrument : MSVOA\_V  
 ClientSampleId :



Tgt Ion: 43 Resp: 147026

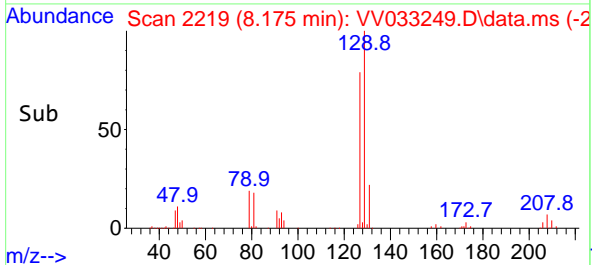
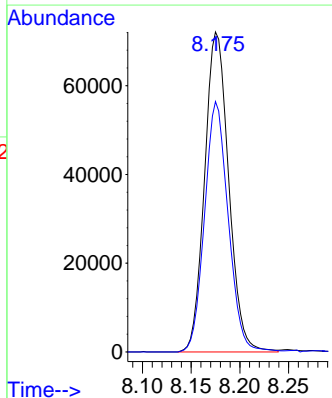
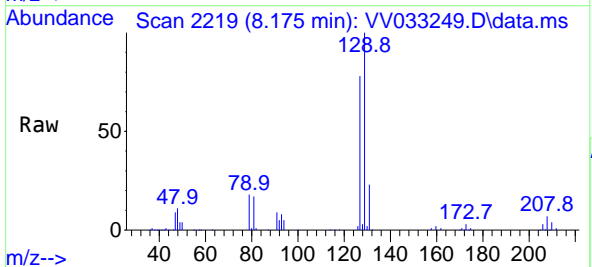
Ion	Ratio	Lower	Upper
43	100		
58	62.9	47.9	71.9
57	22.1	17.4	26.0
100	18.0	13.4	20.0

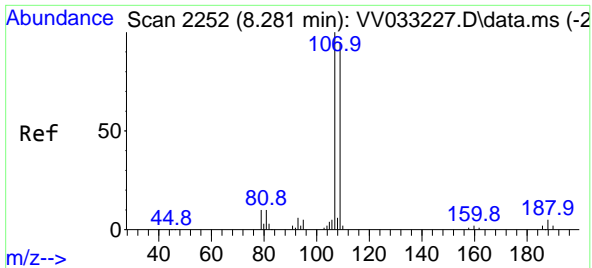


#49  
 Dibromochloromethane  
 Concen: 54.621 ug/L  
 RT: 8.175 min Scan# 2219  
 Delta R.T. -0.000 min  
 Lab File: VV033249.D  
 Acq: 12 Dec 2023 05:39

Tgt Ion: 129 Resp: 124217

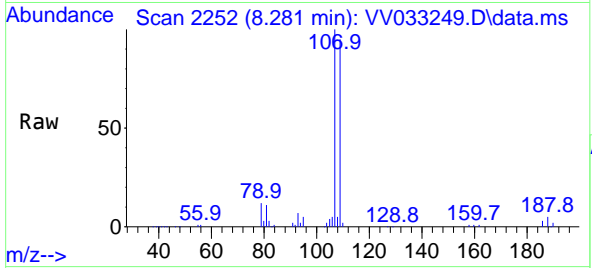
Ion	Ratio	Lower	Upper
129	100		
127	78.2	54.1	100.5



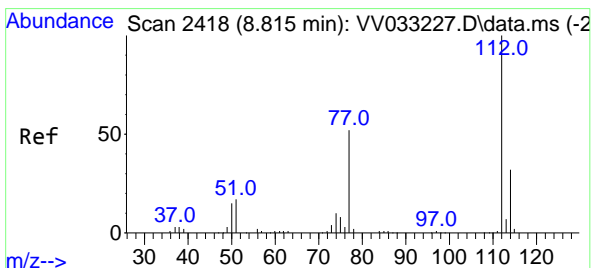
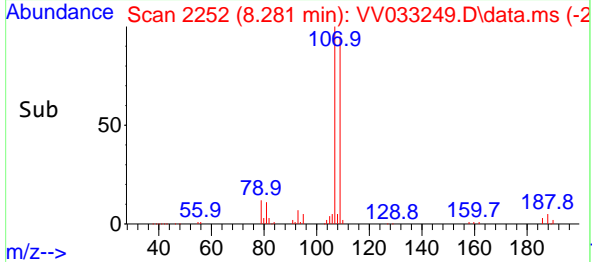
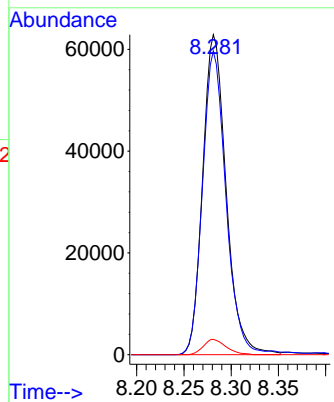


#50  
 1,2-Dibromoethane  
 Concen: 53.425 ug/L  
 RT: 8.281 min Scan# 21  
 Delta R.T. -0.000 min  
 Lab File: VV033249.D  
 Acq: 12 Dec 2023 05:39

Instrument :  
 MSVOA\_V  
 ClientSampleId :

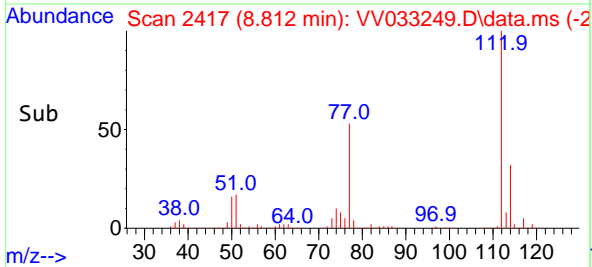
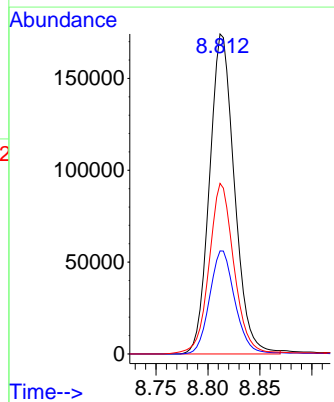
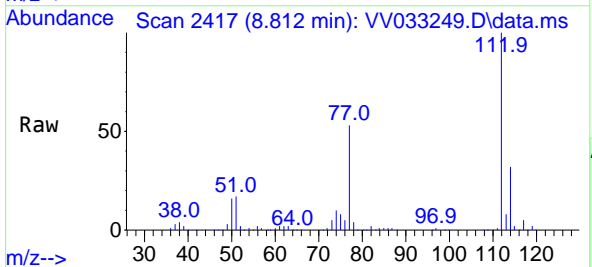


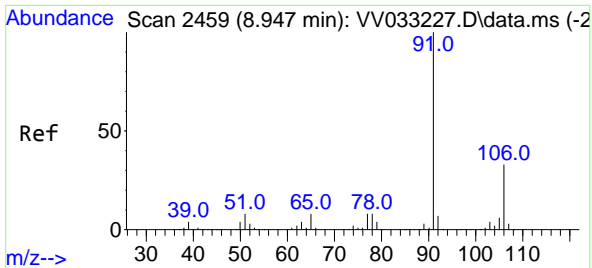
Tgt Ion:107 Resp: 108507  
 Ion Ratio Lower Upper  
 107 100  
 109 94.8 65.2 121.2  
 188 4.8 3.8 5.6



#51  
 Chlorobenzene  
 Concen: 51.686 ug/L  
 RT: 8.812 min Scan# 2417  
 Delta R.T. -0.000 min  
 Lab File: VV033249.D  
 Acq: 12 Dec 2023 05:39

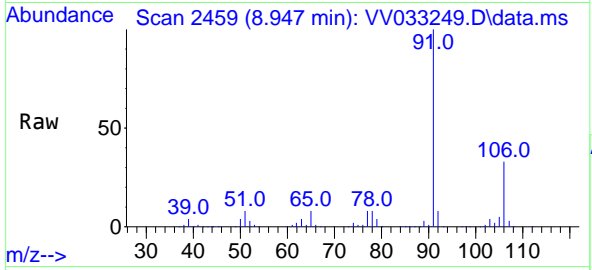
Tgt Ion:112 Resp: 290768  
 Ion Ratio Lower Upper  
 112 100  
 114 32.2 22.9 42.5  
 77 53.3 42.6 64.0



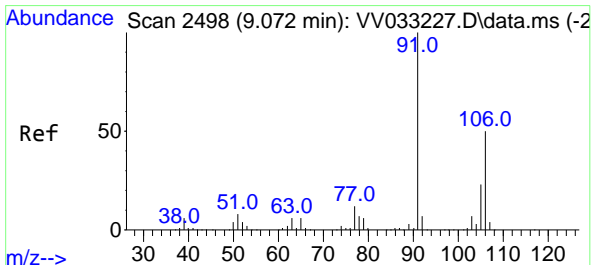
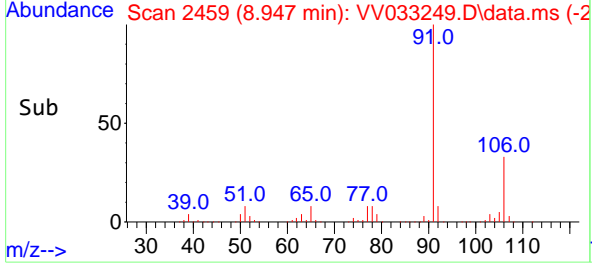
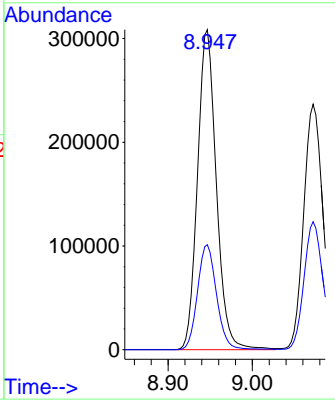


#52  
 Ethylbenzene  
 Concen: 52.205 ug/L  
 RT: 8.947 min Scan# 2459  
 Delta R.T. -0.000 min  
 Lab File: VV033249.D  
 Acq: 12 Dec 2023 05:39

Instrument : MSVOA\_V  
 ClientSampleId :

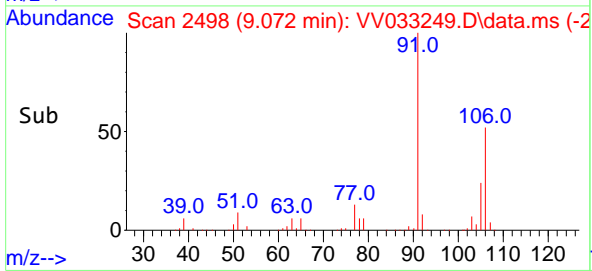
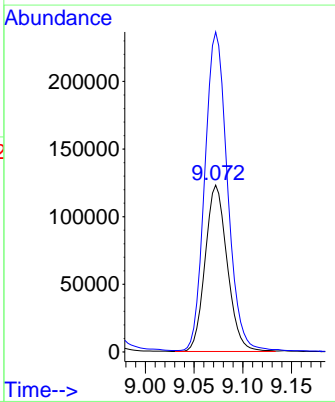
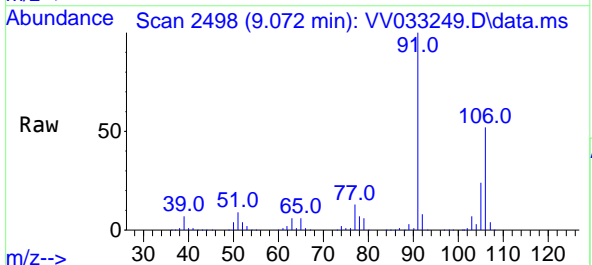


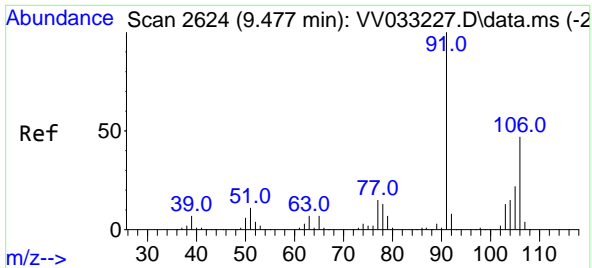
Tgt Ion: 91 Resp: 480715  
 Ion Ratio Lower Upper  
 91 100  
 106 32.8 22.6 42.0



#53  
 m,p-Xylene  
 Concen: 53.301 ug/L  
 RT: 9.072 min Scan# 2498  
 Delta R.T. -0.000 min  
 Lab File: VV033249.D  
 Acq: 12 Dec 2023 05:39

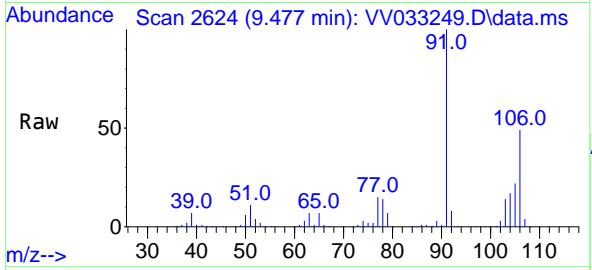
Tgt Ion: 106 Resp: 194368  
 Ion Ratio Lower Upper  
 106 100  
 91 191.7 145.2 269.6



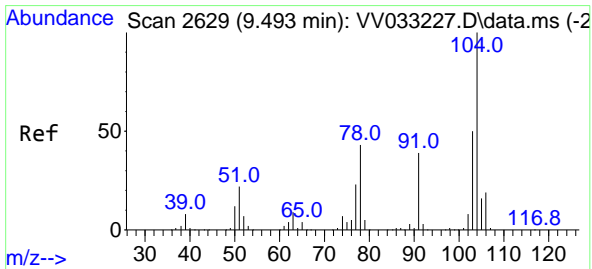
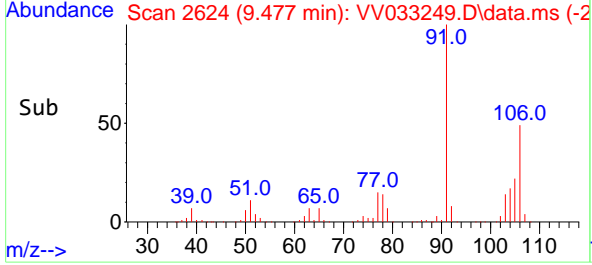
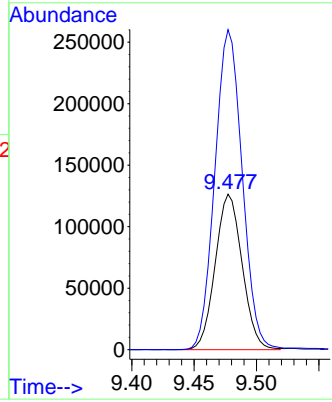


#54  
 o-Xylene  
 Concen: 52.884 ug/L  
 RT: 9.477 min Scan# 2624  
 Delta R.T. -0.000 min  
 Lab File: VV033249.D  
 Acq: 12 Dec 2023 05:39

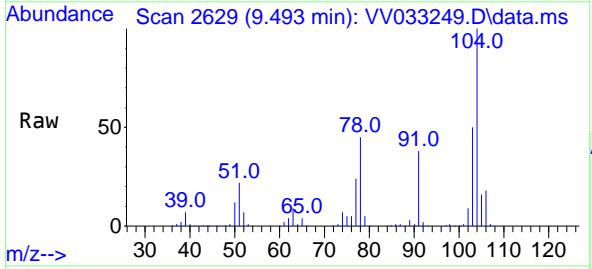
Instrument : MSVOA\_V  
 ClientSampleId :



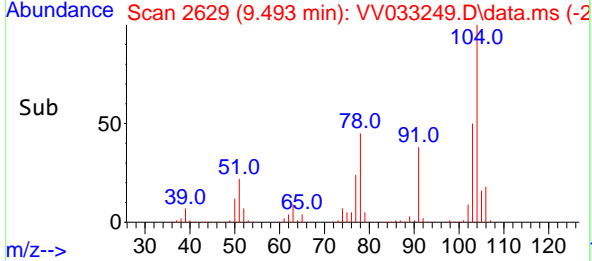
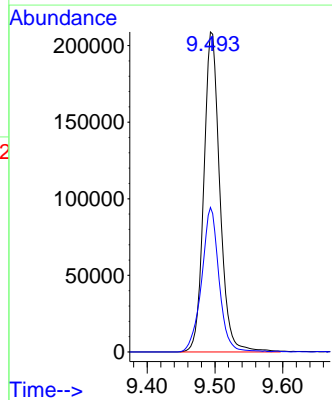
Tgt Ion:106 Resp: 190296  
 Ion Ratio Lower Upper  
 106 100  
 91 205.8 147.8 274.6



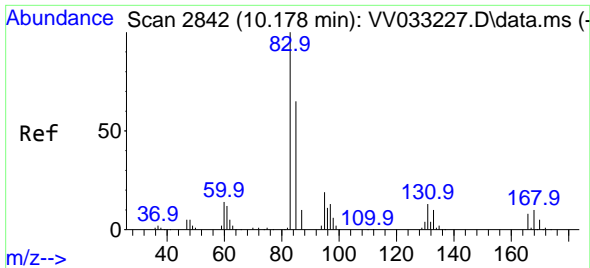
#55  
 Styrene  
 Concen: 55.202 ug/L  
 RT: 9.493 min Scan# 2629  
 Delta R.T. -0.000 min  
 Lab File: VV033249.D  
 Acq: 12 Dec 2023 05:39



Tgt Ion:104 Resp: 343625  
 Ion Ratio Lower Upper  
 104 100  
 78 45.2 30.2 56.0

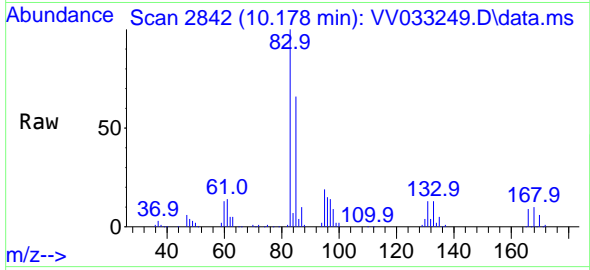




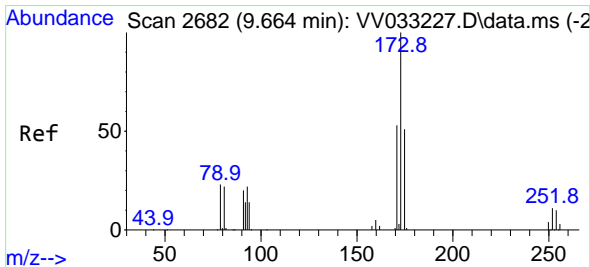
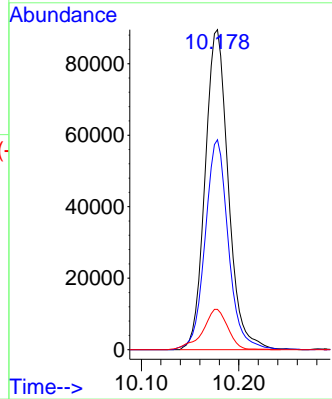
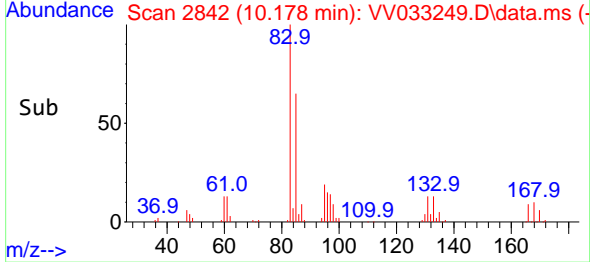


#57  
 1,1,2-Tetrachloroethane  
 Concen: 56.964 ug/L  
 RT: 10.178 min Scan# 2842  
 Delta R.T. -0.000 min  
 Lab File: VV033249.D  
 Acq: 12 Dec 2023 05:39

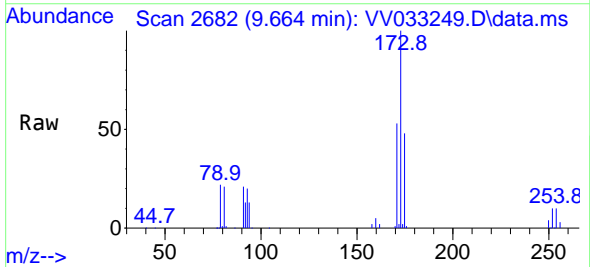
Instrument : MSVOA\_V  
 ClientSampleId :



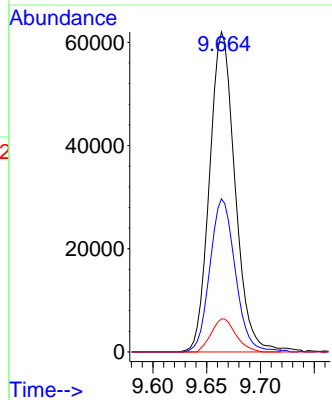
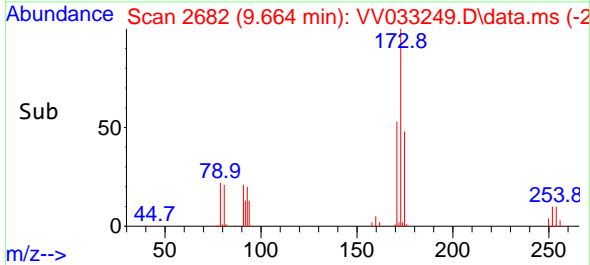
Tgt Ion: 83 Resp: 148265  
 Ion Ratio Lower Upper  
 83 100  
 85 65.6 45.5 84.5  
 131 12.6 9.7 14.5

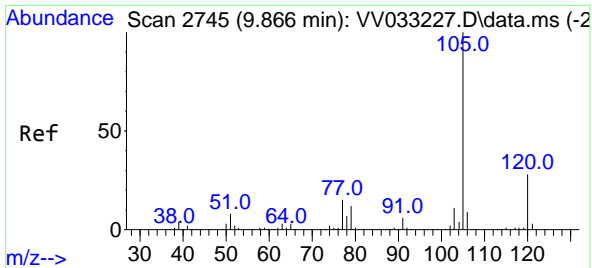


#59  
 Bromoform  
 Concen: 54.874 ug/L  
 RT: 9.664 min Scan# 2682  
 Delta R.T. -0.000 min  
 Lab File: VV033249.D  
 Acq: 12 Dec 2023 05:39



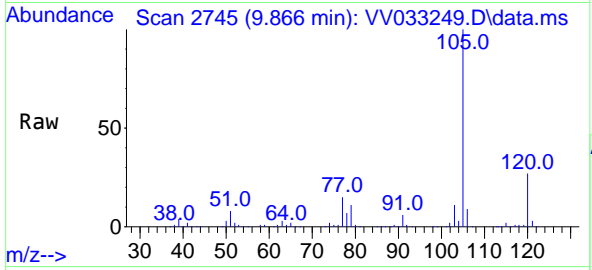
Tgt Ion: 173 Resp: 102003  
 Ion Ratio Lower Upper  
 173 100  
 175 47.4 38.7 58.1  
 254 10.0 8.0 12.0





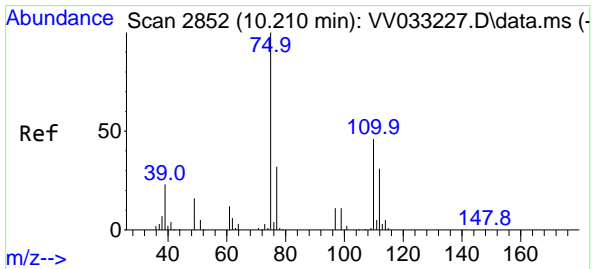
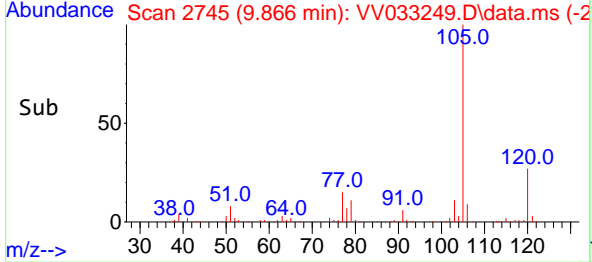
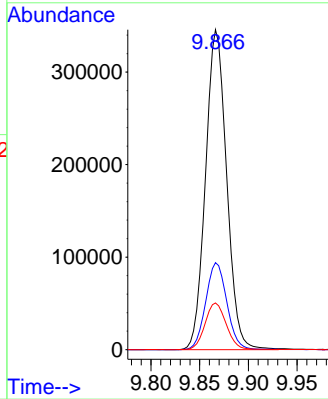
#60  
 Isopropylbenzene  
 Concen: 52.858 ug/L  
 RT: 9.866 min Scan# 21  
 Delta R.T. -0.000 min  
 Lab File: VV033249.D  
 Acq: 12 Dec 2023 05:39

Instrument : MSVOA\_V  
 ClientSampleId :



Tgt Ion: 105 Resp: 521994

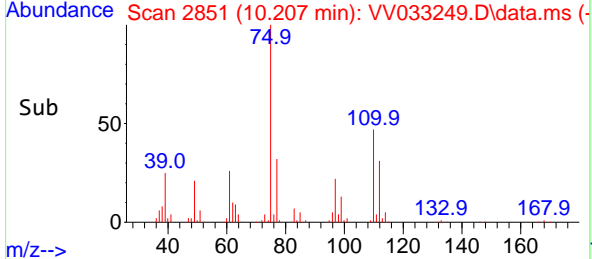
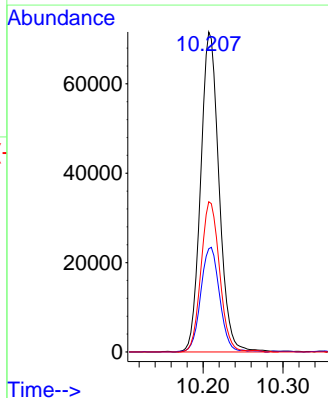
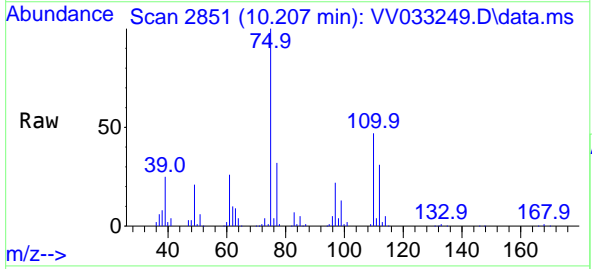
Ion	Ratio	Lower	Upper
105	100		
120	27.2	21.3	31.9
77	14.7	12.0	18.0

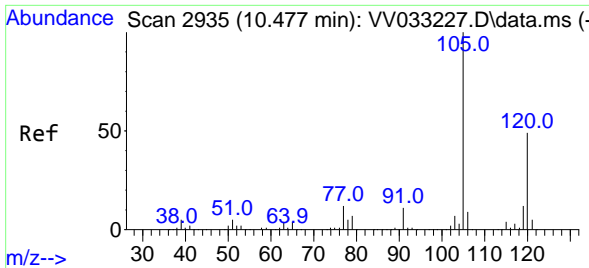


#61  
 1,2,3-Trichloropropane  
 Concen: 53.674 ug/L  
 RT: 10.207 min Scan# 2851  
 Delta R.T. -0.000 min  
 Lab File: VV033249.D  
 Acq: 12 Dec 2023 05:39

Tgt Ion: 75 Resp: 114629

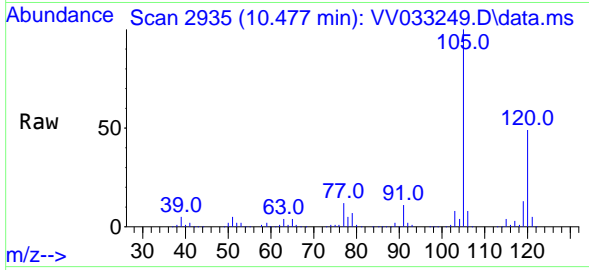
Ion	Ratio	Lower	Upper
75	100		
77	33.3	27.0	40.6
110	47.4	38.1	57.1



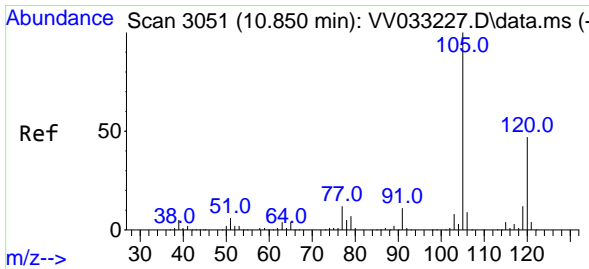
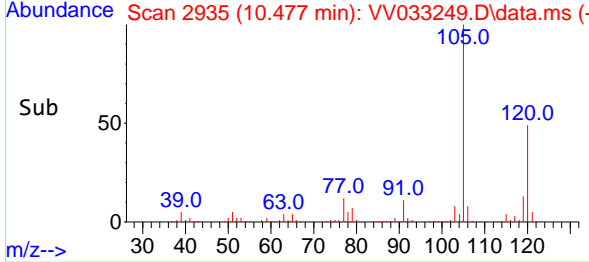
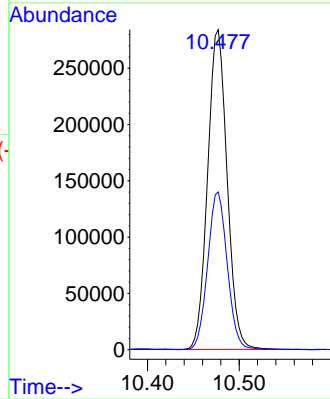


#62  
 1,3,5-Trimethylbenzene  
 Concen: 52.696 ug/L  
 RT: 10.477 min Scan# 2935  
 Delta R.T. -0.000 min  
 Lab File: VV033249.D  
 Acq: 12 Dec 2023 05:39

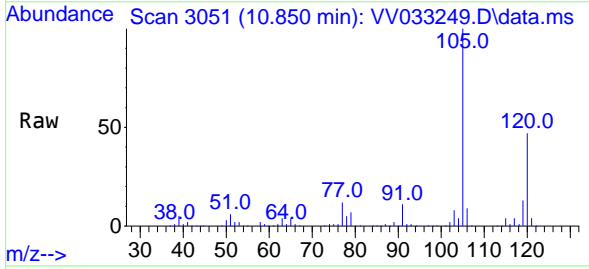
Instrument : MSVOA\_V  
 ClientSampleId :



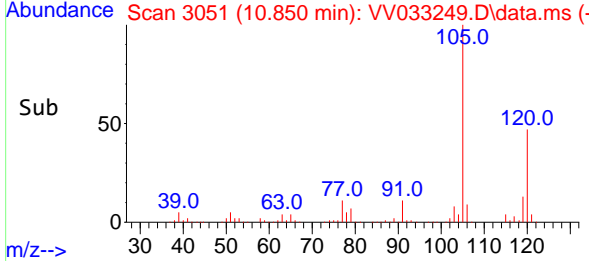
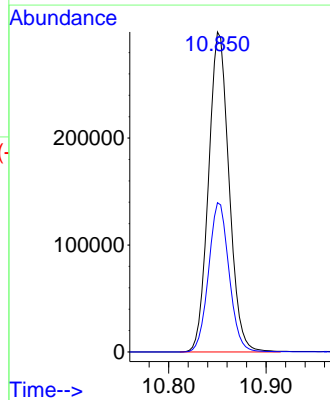
Tgt Ion:105 Resp: 419273  
 Ion Ratio Lower Upper  
 105 100  
 120 49.6 39.7 59.5

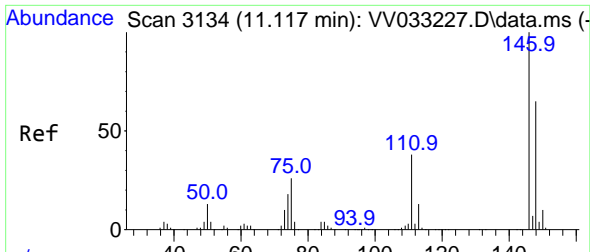


#63  
 1,2,4-Trimethylbenzene  
 Concen: 52.868 ug/L  
 RT: 10.850 min Scan# 3051  
 Delta R.T. -0.000 min  
 Lab File: VV033249.D  
 Acq: 12 Dec 2023 05:39



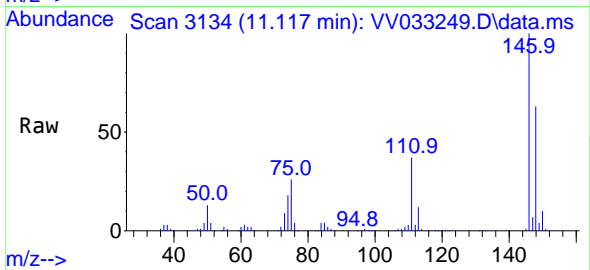
Tgt Ion:105 Resp: 438079  
 Ion Ratio Lower Upper  
 105 100  
 120 46.6 36.7 55.1



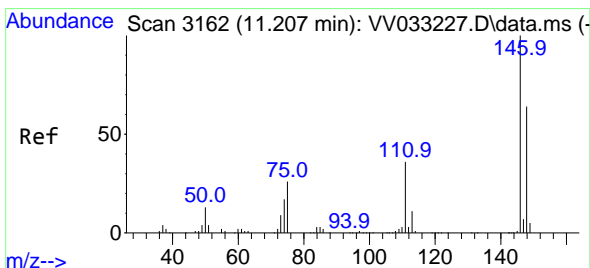
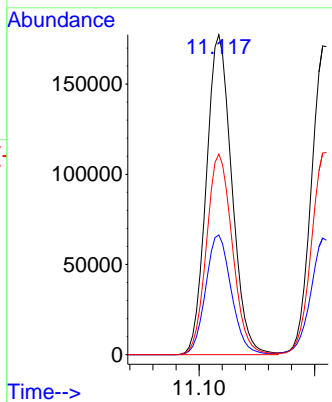
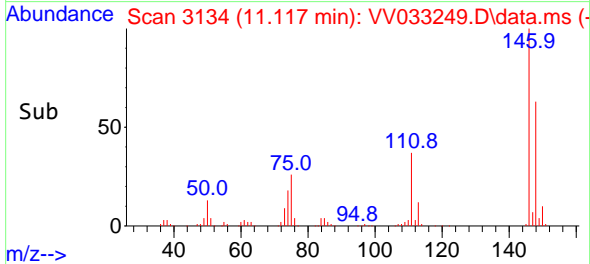


#64  
 1,3-Dichlorobenzene  
 Concen: 51.593 ug/L  
 RT: 11.117 min Scan# 3134  
 Delta R.T. -0.000 min  
 Lab File: VV033249.D  
 Acq: 12 Dec 2023 05:39

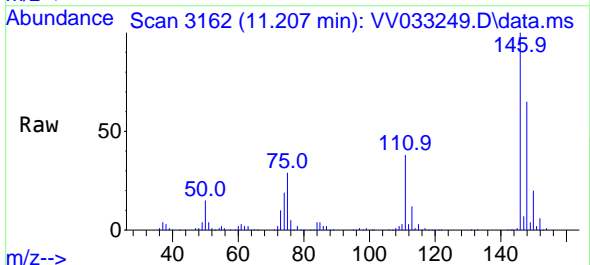
Instrument : MSVOA\_V  
 ClientSampleId :



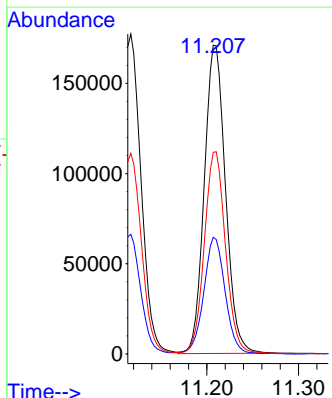
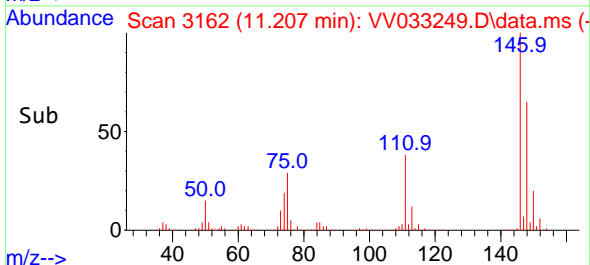
Tgt Ion:146 Resp: 272200  
 Ion Ratio Lower Upper  
 146 100  
 111 37.4 26.2 48.6  
 148 62.7 44.5 82.7

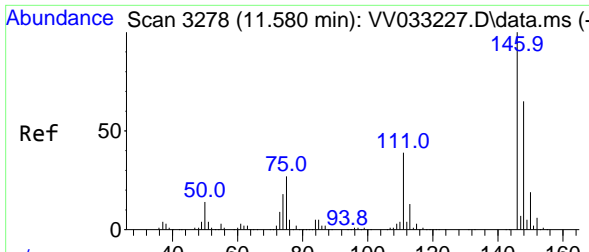


#65  
 1,4-Dichlorobenzene  
 Concen: 50.192 ug/L  
 RT: 11.207 min Scan# 3162  
 Delta R.T. -0.000 min  
 Lab File: VV033249.D  
 Acq: 12 Dec 2023 05:39



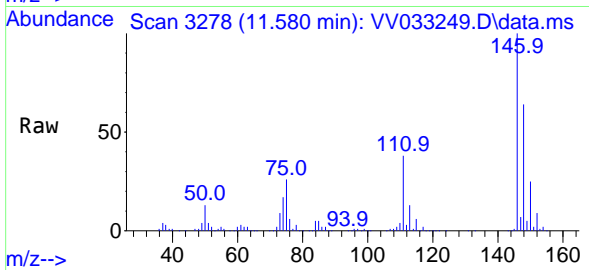
Tgt Ion:146 Resp: 275074  
 Ion Ratio Lower Upper  
 146 100  
 111 37.8 25.9 48.1  
 148 65.3 44.9 83.5



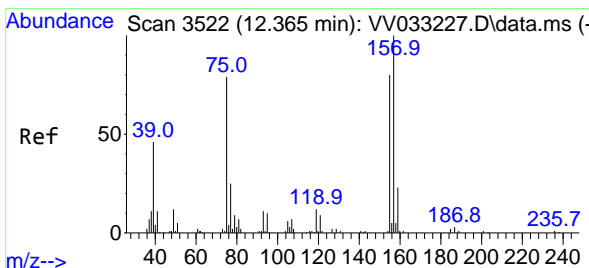
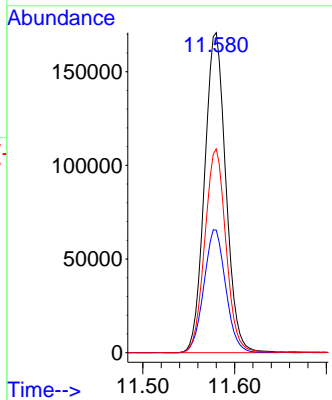
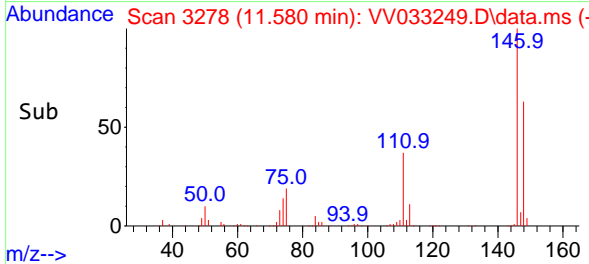


#67  
 1,2-Dichlorobenzene  
 Concen: 53.325 ug/L  
 RT: 11.580 min Scan# 311  
 Delta R.T. -0.000 min  
 Lab File: VV033249.D  
 Acq: 12 Dec 2023 05:39

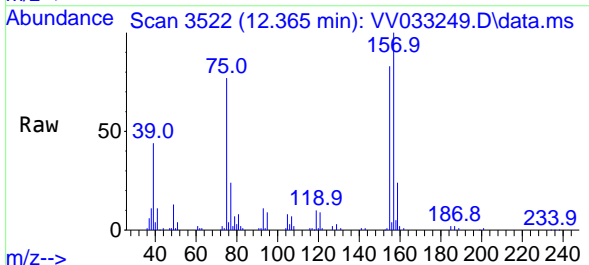
Instrument : MSVOA\_V  
 ClientSampleId :



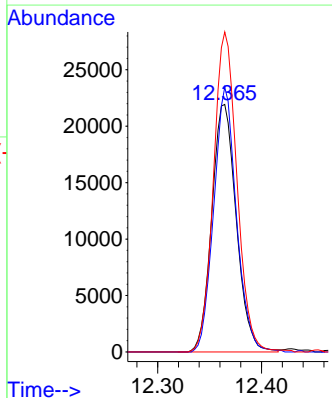
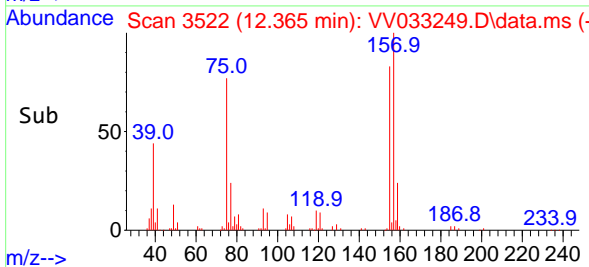
Tgt Ion:146 Resp: 275812  
 Ion Ratio Lower Upper  
 146 100  
 111 38.3 32.4 48.6  
 148 63.7 51.8 77.8

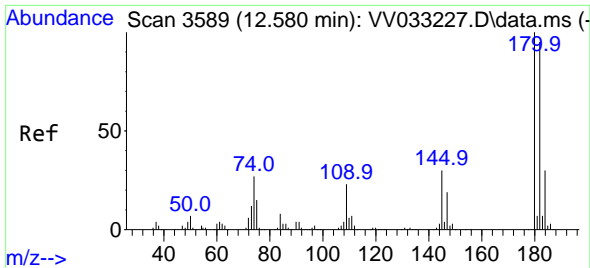


#68  
 1,2-Dibromo-3-chloropropane  
 Concen: 54.847 ug/L  
 RT: 12.365 min Scan# 3522  
 Delta R.T. -0.000 min  
 Lab File: VV033249.D  
 Acq: 12 Dec 2023 05:39



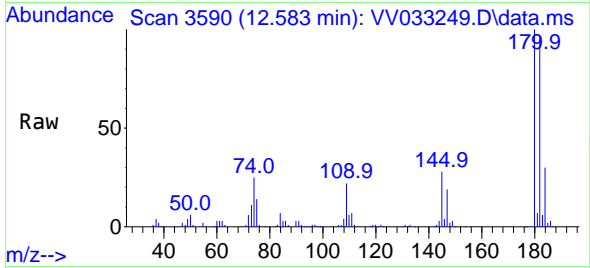
Tgt Ion: 75 Resp: 35941  
 Ion Ratio Lower Upper  
 75 100  
 155 107.0 75.8 113.6  
 157 129.3 95.4 143.0



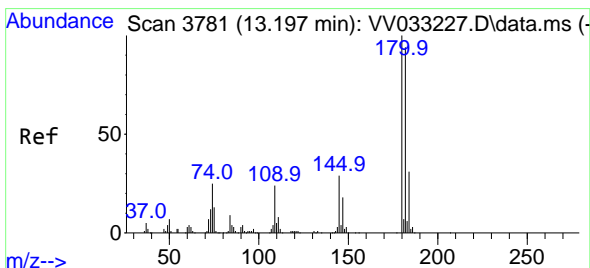
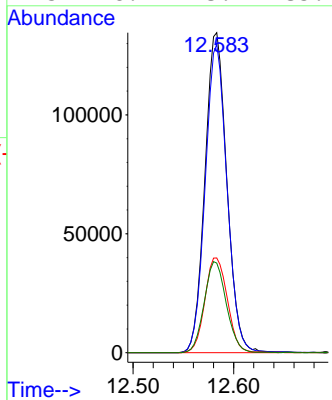
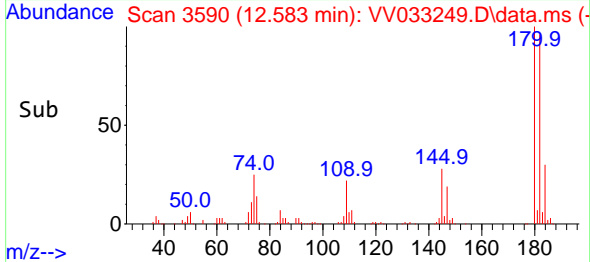


#69  
 1,3,5-Trichlorobenzene  
 Concen: 48.231 ug/L  
 RT: 12.583 min Scan# 31  
 Delta R.T. -0.000 min  
 Lab File: VV033249.D  
 Acq: 12 Dec 2023 05:39

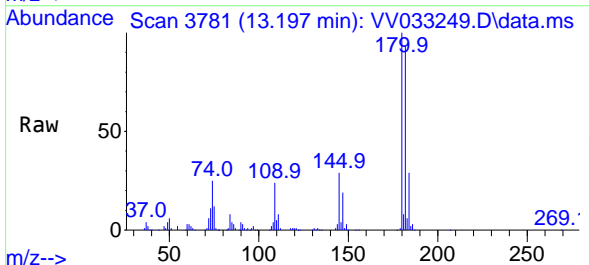
Instrument :  
 MSVOA\_V  
 ClientSampleId :



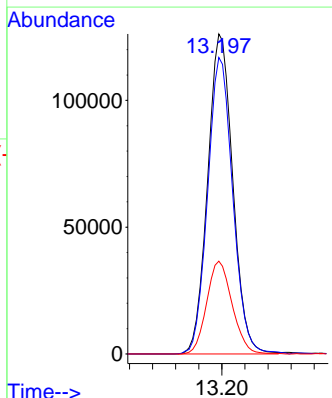
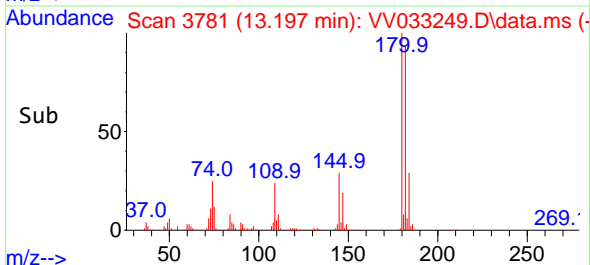
Tgt Ion:180 Resp: 203825  
 Ion Ratio Lower Upper  
 180 100  
 182 95.9 76.2 114.4  
 184 30.5 24.2 36.4  
 145 28.7 23.9 35.9

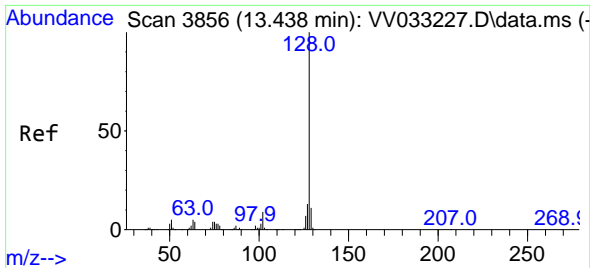


#70  
 1,2,4-trichlorobenzene  
 Concen: 48.784 ug/L  
 RT: 13.197 min Scan# 3781  
 Delta R.T. -0.000 min  
 Lab File: VV033249.D  
 Acq: 12 Dec 2023 05:39



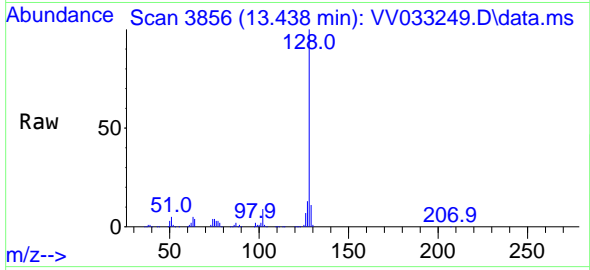
Tgt Ion:180 Resp: 190472  
 Ion Ratio Lower Upper  
 180 100  
 182 92.8 76.3 114.5  
 145 29.4 23.4 35.0





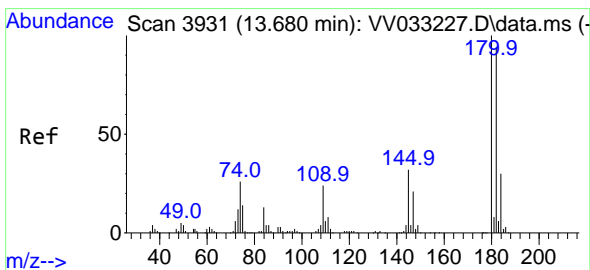
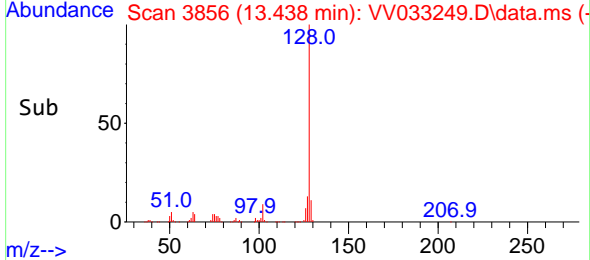
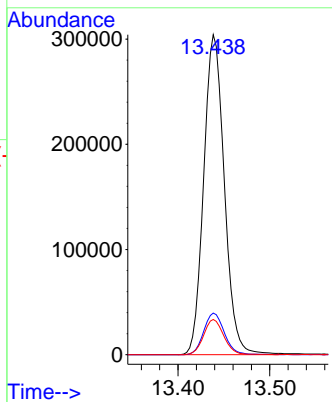
#71  
 Naphthalene  
 Concen: 49.929 ug/L  
 RT: 13.438 min Scan# 3856  
 Delta R.T. -0.000 min  
 Lab File: VV033249.D  
 Acq: 12 Dec 2023 05:39

Instrument : MSVOA\_V  
 ClientSampleId :



Tgt Ion:128 Resp: 475409

Ion	Ratio	Lower	Upper
128	100		
127	12.9	10.6	16.0
129	10.8	8.6	13.0



#72  
 1,2,3-Trichlorobenzene  
 Concen: 51.772 ug/L  
 RT: 13.680 min Scan# 3931  
 Delta R.T. -0.000 min  
 Lab File: VV033249.D  
 Acq: 12 Dec 2023 05:39

Tgt Ion:180 Resp: 195045

Ion	Ratio	Lower	Upper
180	100		
182	94.7	75.2	112.8
145	31.4	24.9	37.3

